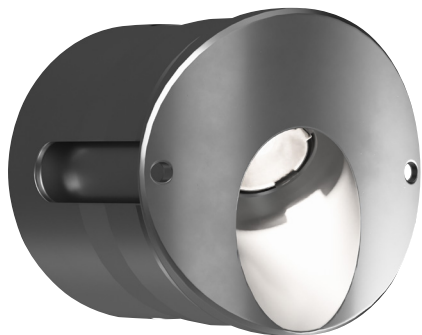


THETA MEGA PUCK

SPOT STANDARD WHITE



FEATURES

- 45° cut off angle
- Features a patented design with a collapsible thread
- Easy install & can only be removed with a unique extraction tool
- Zero up light
- Ideal for handrail post & bollards
- IP67 & Marine Grade

HOUSING

- Durable marine grade anodized aluminum housing, with 3.5" (90mm) 20AWG wire leads.

MOUNTING

- Luminaire is for use in non-insulated recessed surfaces
- Install in round and square metallic structural framing
- Curved or flat mounting surfaces
- Framing wall thickness - min. 1/16", 2mm
- Cylindrical framing size - min. 2", 50mm OD to 5-7/8", 150mm OD max
- 30mm hole cutout opening for curved or flat surfaces
- Concrete pour installation coming soon
- Not for in-ground use

ELECTRICAL/LED

- 12Vdc, 400mA-700mA, 5W-9W constant current
- 8 puck maximum per driver, constant current
- Up to 700mA in metallic substrate
- Up to 500mA in non-metallic substrate
- 24V - 10W constant voltage input
- 25 puck maximum per driver, constant voltage

LISTING

- ETLus Listed to UL2108 (suitable for wet locations)
- cETL Listed to CSA C22.2 #250.0
- Impact tested to IK10 (EN62262)
- IP67 rated with PC lens
- 3000k or warmer must be selected for International Dark-Sky Association approval.

LED INFO

- 80+ CRI: SDCM = 3-step MacAdam Ellipse, Lumen Maintenance: L₉₀ >100,000 hrs
- 90+ CRI: SDCM = 3-step MacAdam Ellipse, Lumen Maintenance: L₉₀ >100,000 hrs
- Cree Xlamp® XP-GA (Amber-590nm "Dominant Wavelength" complies with Wildlife and - Marine Turtle safe-lighting requirements)

PROJECT INFORMATION			
JOB NAME		TYPE	
ORDERING CODE			

ORDERING CODE

SERIES	THETAM	mega puck
TYPE	S	spot
CCT	27K	2700K (0.96)
	30K	3000K (1.00)
	35K	3500K (1.02)
	40K	4000K (1.05)
	AMB	amber (0.59)
	RD	red (0.49)
	GR	green (0.97)
	BL	blue (0.23)
CRI	80	80 CRI (1.00)
	90	90 CRI (0.85)
BEAM	25D	25 degrees (0.96)
	40D	40 degrees (1.00)
	60D	60 degrees (0.79)
FINISH	AL	anodized aluminum (1.00)
	AB	anodized black (0.95)
FACE TYPE	CF	curved face
	FF	flat face
	CF75 ¹	curved face 75
VOLTAGE	CC ²	constant current
	CV ³	constant voltage

ORDERING CODE

Follow the steps to specify your fixture, example:

THETAM - S - 30K - 80 - 25D - AB - FF - CV

NOTES

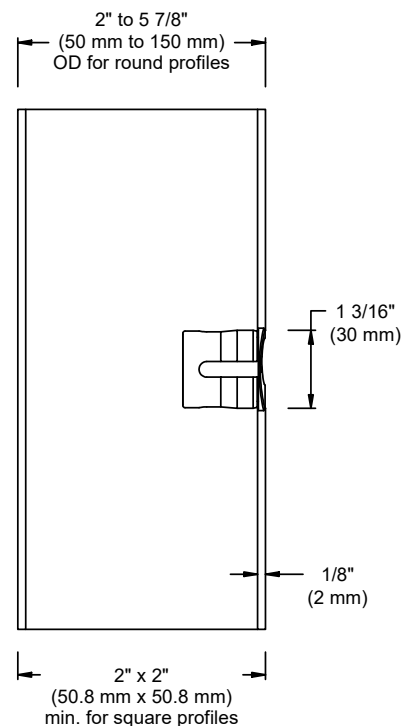
1. Recommended for 2" (50mm) to 4" (100mm) diameters.
2. Specify driver on page 3.
3. Specify driver on page 4.

CONSTANT CURRENT

LUMENS (3000K)	CURRENT	LED WATTAGE	SUBSTRATE
380	400	5W	NON-METALLIC/METALLIC
450	500	6W	
510	600	7.5W	METALLIC
570	700	8.5W	

CONSTANT VOLTAGE

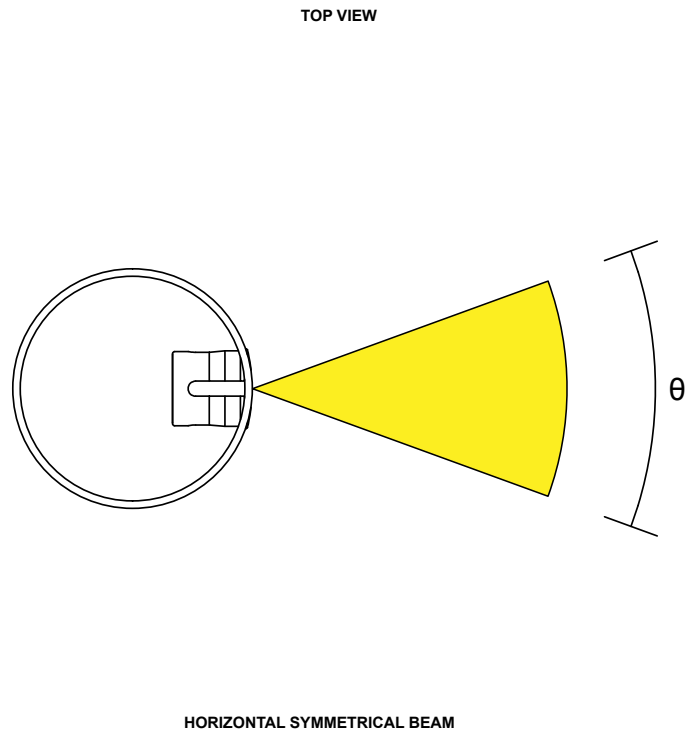
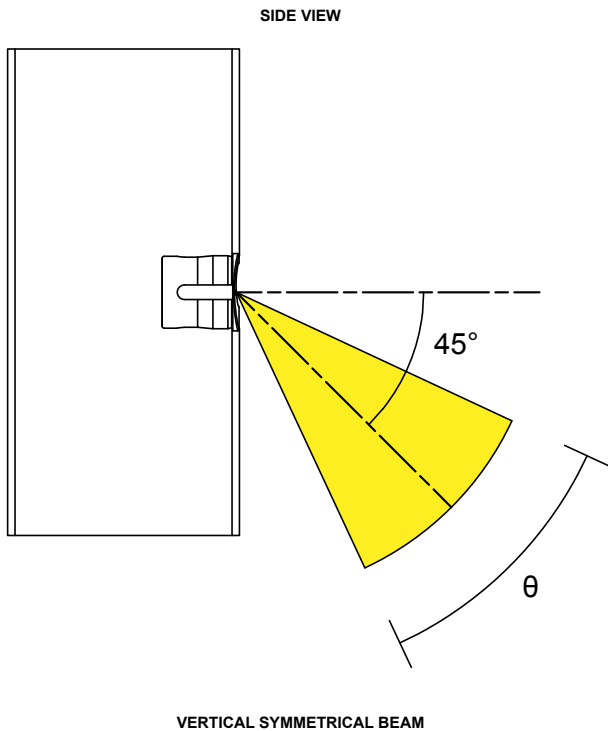
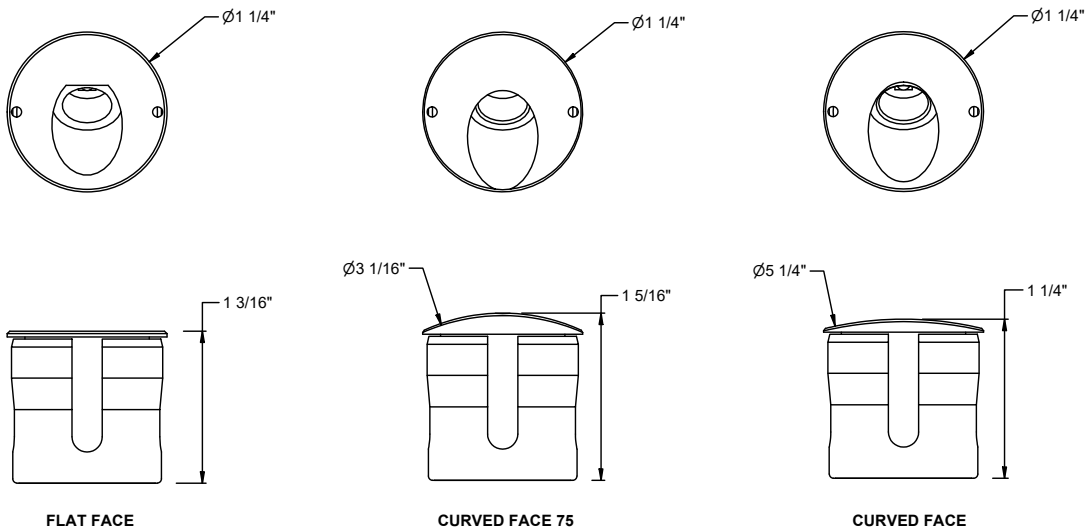
SW (LED)	POWER	
DELIVERED LM	W	LPW
570	10	57



alphabet

PROJECT INFORMATION			
JOB NAME		TYPE	
ORDERING CODE			

MEGA PUCK APERTURE - DETAILS



PROJECT INFORMATION			
JOB NAME		TYPE	
ORDERING CODE			

REMOTE DRIVER - 0-10V ORDERING CODE

PART NUMBER	P70414	LED driver with box
CURRENT	400	400mA
	500	500mA
	600	600mA
	700	700mA
DIMMING	ECO	1%
	SOLO	0.1%

ORDERING CODE

Follow the steps to specify your fixture, example:

P70414 - 500 - ECO

See Wiring Diagram on page 5

MAXIMUM PUCK WIRING DISTANCE

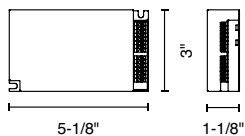
AWG VALUE	DISTANCE ¹ (FT)
20	300
18	600

NOTES

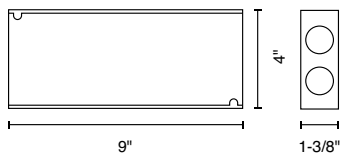
1. Maximum wiring distance from driver to the first puck.

MAXIMUM WIRING DISTANCE FROM DRIVER TO THE FIRST PUCK

AWG VALUE	DISTANCE (FT)
18	150
16	250
14	400
12	600
10	1000



ECO or SOLO 561/S



Box

DESCRIPTION

-0-10V dimmable protocol LED drive with smooth flicker free dimming

TECHNICAL SPECS

- 120-277Vac, 50/60Hz input
- 50W max output
- 700mA max DC constant current output per channel
- 2-55Vdc output per channel
- ECO 1% dimming - 1 channel output
- Solo 0.1% dimming - 2 channel output
- 0-10V compatible
- Operating temperature: -4°F to 122°F
- Class II rated
- Suitable for use in damp and dry locations
- Short circuit protection
- Overload protection
- Over-voltage protection
- Thermal protection

LISTINGS

- ETLus Listed to UL2108 (suitable for dry and damp locations)
- cETL Listed to CSA C22.2 #250.0

DIMMING TYPE	mA	PUCK NUMBER
ECO	400-700mA	4
SOLO	700mA	4
SOLO	600mA	6
SOLO	500mA	6
SOLO	400mA	8

REMOTE DRIVER - DALI ORDERING CODE

PART NUMBER	P70469	LED driver with box
CURRENT	400	400mA
	500	500mA
	600	600mA
	700	700mA
DIMMING	ECO	1%
	SOLO	0.1%

ORDERING CODE

Follow the steps to specify your fixture, example:

P70469 - 500 - ECO

See Wiring Diagram on page 5

MAXIMUM PUCK WIRING DISTANCE

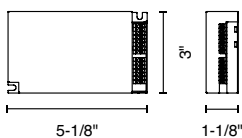
AWG VALUE	DISTANCE ¹ (FT)
20	300
18	600

NOTES

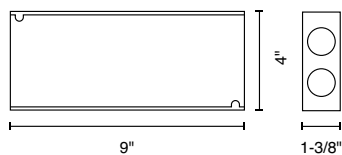
1. Maximum wiring distance from driver to the first puck.

MAXIMUM WIRING DISTANCE FROM DRIVER TO THE FIRST PUCK

AWG VALUE	DISTANCE (FT)
18	150
16	250
14	400
12	600
10	1000



ECO or SOLO 561/S



Box

DESCRIPTION

-DALI-2 dimmable protocol LED drive with smooth flicker free dimming

TECHNICAL SPECS

- 120-277Vac, 50/60Hz input
- 50W max output
- 700mA max DC constant current output per channel
- 2-55Vdc output per channel
- ECO 1% dimming - 1 channel output
- Solo 0.1% dimming - 2 channel output
- DALI compatible
- Operating temperature: -4°F to 122°F
- Class II rated
- Suitable for use in damp and dry locations
- Short circuit protection
- Overload protection
- Over-voltage protection
- Thermal protection

LISTINGS

- ETLus Listed to UL2108 (suitable for dry and damp locations)
- cETL Listed to CSA C22.2 #250.0

DIMMING TYPE	mA	PUCK NUMBER
ECO	400-700mA	4
SOLO	700mA	4
SOLO	600mA	6
SOLO	500mA	6
SOLO	400mA	8

PROJECT INFORMATION			
JOB NAME		TYPE	
ORDERING CODE			

REMOTE DRIVER - 10V ORDERING CODE

PART NUMBER	P70571	LED driver with box
VOLTAGE	24	24V
DIMMING	10V	0-10V dimming to 10%
ELECTRICAL OPTIONS	100 100-2 150 150-2 240 320 ¹	100W 2X 100W 150W 2X 150W 240W 320W

ORDERING CODE

Follow the steps to specify your fixture, example:
P70571 - 24 - 10V - 150

See wiring diagram on page 5.

NOTES

1. 320W driver dimming performance of 15% at 25 pucks and 20% at 20 pucks.

MAXIMUM WIRING DISTANCE FROM DRIVER TO START OF RUN LENGTH AT VARIOUS LOADS

NO. OF MEGA PUCKS	5	10	15	20	25
AWG VALUE	DISTANCE (FT)				
10	100	100	75	60	40
12	100	75	50	40	30
14	75	50	35	25	20

MAXIMUM MEGA PUCKS PER DRIVER

DISTANCE	200 FT OR LESS FOR ALL OPTIONS BELOW
DRIVER OUTPUT	NO. OF MEGA PUCKS
100W	1 TO 7
150W	8 TO 11
240W*	12 TO 17
320W*	21 TO 25 AT 15% DIM18 TO 20 AT 20% DIM

NOTE

*Must use driver with allowable range of Mega Puck to achieve specified dimming performance.
Example: 320W driver with 10 pucks will not dim to the specified percentage.

DESCRIPTION

- Meanwell ELG-100 Class 2 Power Supply
- Meanwell ELG-150 / 240 or HLG-320H Class 1 Power Supply
- 0-10V Dimmable to 10% with 100W / 150W and 240W drivers
- 0-10V Dimmable to 15% with 320W at 25 pucks and 20% at 20 pucks
- 12"x12"x4" Indoor or Outdoor metal housing
- 1/2 KOs, 3/4 KOs, 1 KOs, 1-1/4 KOs and (4x) mounting holes

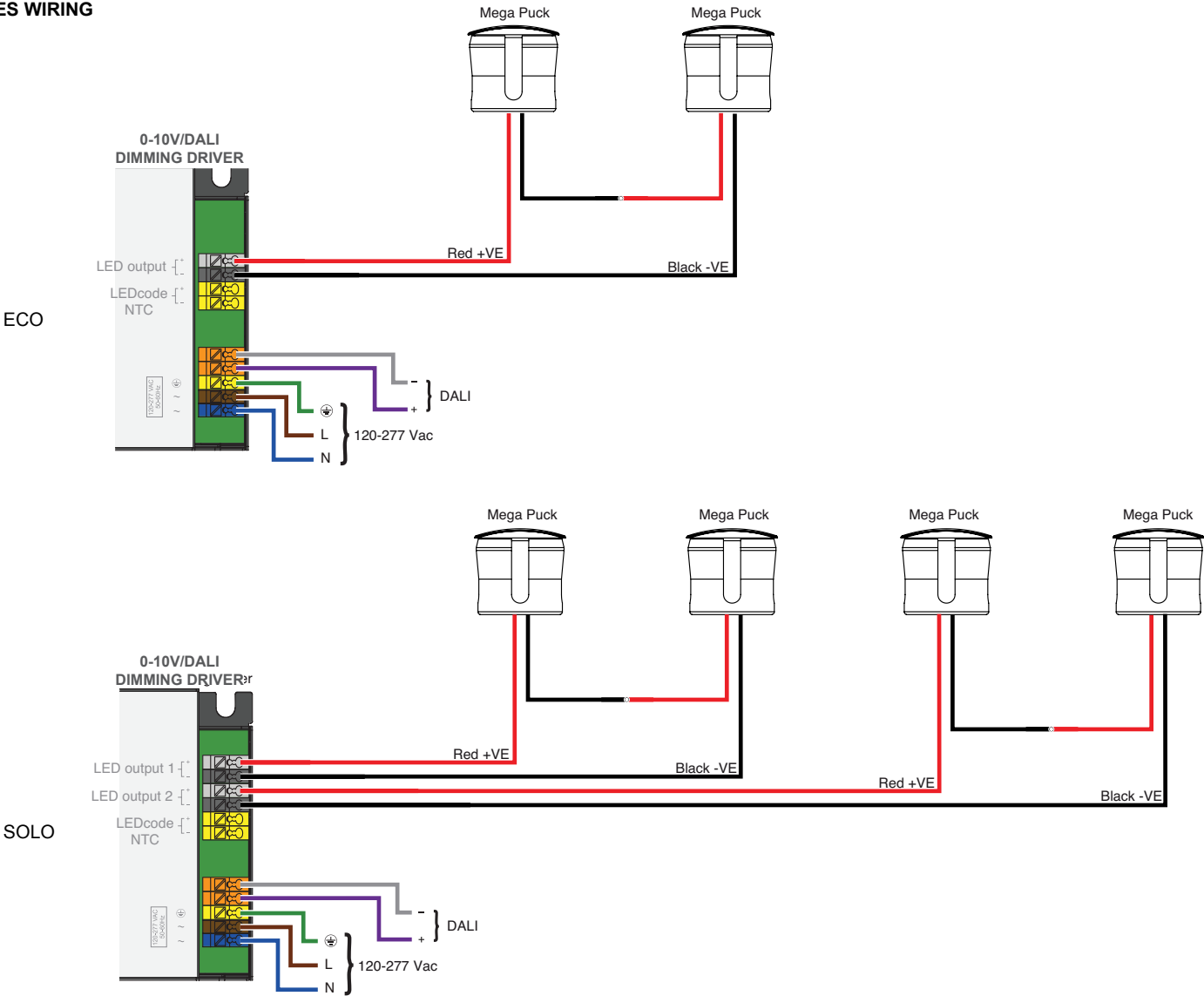
ELECTRICAL/CONTROLS

- 90-305 VAC, 47-63Hz input
- 100W / 150W / 240W / 320W max output
- Ambient temperature @ full load: -40°C / -40°F to +60°C / 140°F
- NEMA 3R enclosure
- Outdoor rated: Rainproof
- Short circuit protection
- Overload protection
- Over-voltage protection
- Thermal protection
- Built in PFC function
- Box: Length = 12", Height = 12", Width = 4"

PROJECT INFORMATION			
JOB NAME		TYPE	
ORDERING CODE			

WIRING DIAGRAM

SERIES WIRING



PARALLEL WIRING

