

THETA MEGA PUCK

DOWN STANDARD WHITE



FEATURES

- 1" Downlight
- IP67 from all directions & Marine Grade
- Features a patented design with a collapsible thread
- Easy install & can only be removed with a unique extraction tool
- Zero up light
- Compatible with Skyline accessories

HOUSING

- Durable marine grade anodized aluminum housing, with 3.5" (90mm) 20AWG wire leads.

MOUNTING

- Luminaire is for use in non-insulated recessed surfaces
- Install in metallic structural framing
- Curved or flat mounting surfaces
- Framing wall thickness - min. 1/16", 2mm
- 30mm hole cutout opening
- Concrete pour installation coming soon.
- Not for in-ground use

ELECTRICAL/LED

- 12Vdc, 400mA-700mA, 5W-9W constant current
- 8 puck maximum per driver, constant current
- Up to 700mA in metallic substrate
- Up to 500mA in non-metallic substrate
- 24V - 10W constant voltage input
- 25 puck maximum per driver, constant voltage

LISTING

- ETLus Listed to UL2108 (suitable for wet locations)
- cETL Listed to CSA C22.2 #250.0
- Impact tested to IK10 (EN62262)
- IP67 rated with PC lens
- 3000k or warmer must be selected for International Dark-Sky Association approval.

LED INFO

- 80+ CRI: SDCM = 3-step MacAdam Ellipse, Lumen Maintenance: $L_{90} > 100,000$ hrs
- 90+ CRI: SDCM = 3-step MacAdam Ellipse, Lumen Maintenance: $L_{90} > 100,000$ hrs
- Cree Xlamp® XP-GA (Amber-590nm "Dominant Wavelength" complies with Wildlife and - Marine Turtle safe-lighting requirements)

PROJECT INFORMATION			
JOB NAME		TYPE	
ORDERING CODE			

ORDERING CODE

SERIES	THETAM	mega puck
TYPE	D	down
CCT	27K	2700K (0.96)
	30K	3000K (1.00)
	35K	3500K (1.02)
	40K	4000K (1.05)
	AMB	amber (0.59)
	RD	red (0.49)
	GR	green (0.97)
	BL	blue (0.23)
CRI	80 90	80 CRI (1.00) 90 CRI (0.90)
BEAM	15D	15 degrees (0.95)
	25D	25 degrees (0.95)
	30D	30 degrees (0.97)
	40D	40 degrees (1.00)
	E1	elliptical beam spread (0.95)
	BL	batwing line (0.83)
	BS	batwing square (0.93)
	FN	flood narrow (0.96)
	FM	flood medium (0.95)
	FW	flood wide (0.98)
	T1	type 1 (1.00)
	T2	type 2 (0.99)
	T3	type 3 (0.95)
ACCESSORIES	see page 3 for details.	
FINISH	AL	anodized aluminum
	AB	anodized black
VOLTAGE	CC ²	constant current
	CV ³	constant voltage

ORDERING CODE

Follow the steps to specify your fixture, example:

THETAM - D - 30K - 80 - 25D - AB - FF - CC

NOTES

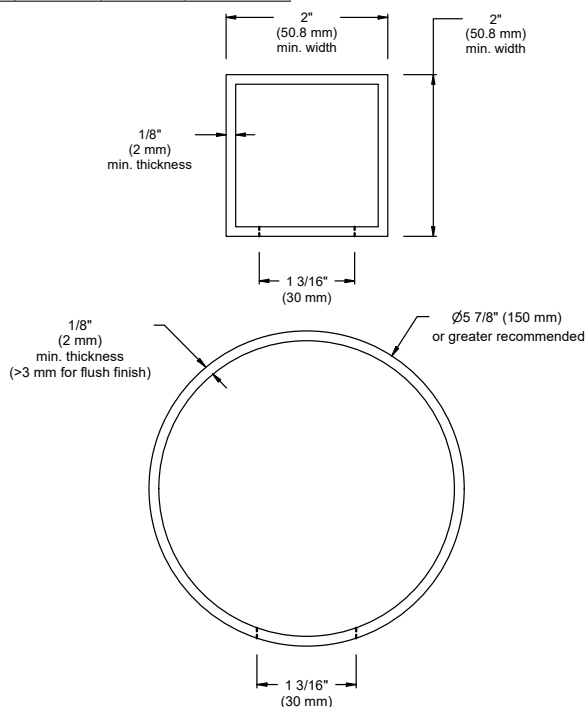
1. 40° x 20° beam distribution.
2. Specify driver on page 4.
3. Specify driver on page 5.

CONSTANT CURRENT

LUMENS (3000K)	CURRENT	LED WATTAGE	SUBSTRATE
500	400	5W	NON- METALLIC/ METALLIC
600	500	6W	
690	600	7.5W	METALLIC
770	700	8.5W	

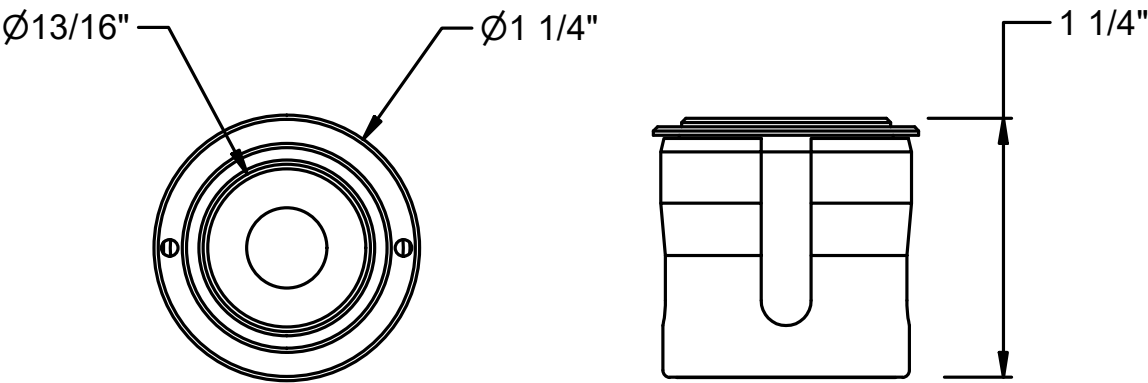
CONSTANT VOLTAGE

SW (LED)	POWER	
DELIVERED LM	W (80/90 CRI)	LPW
770	10	77

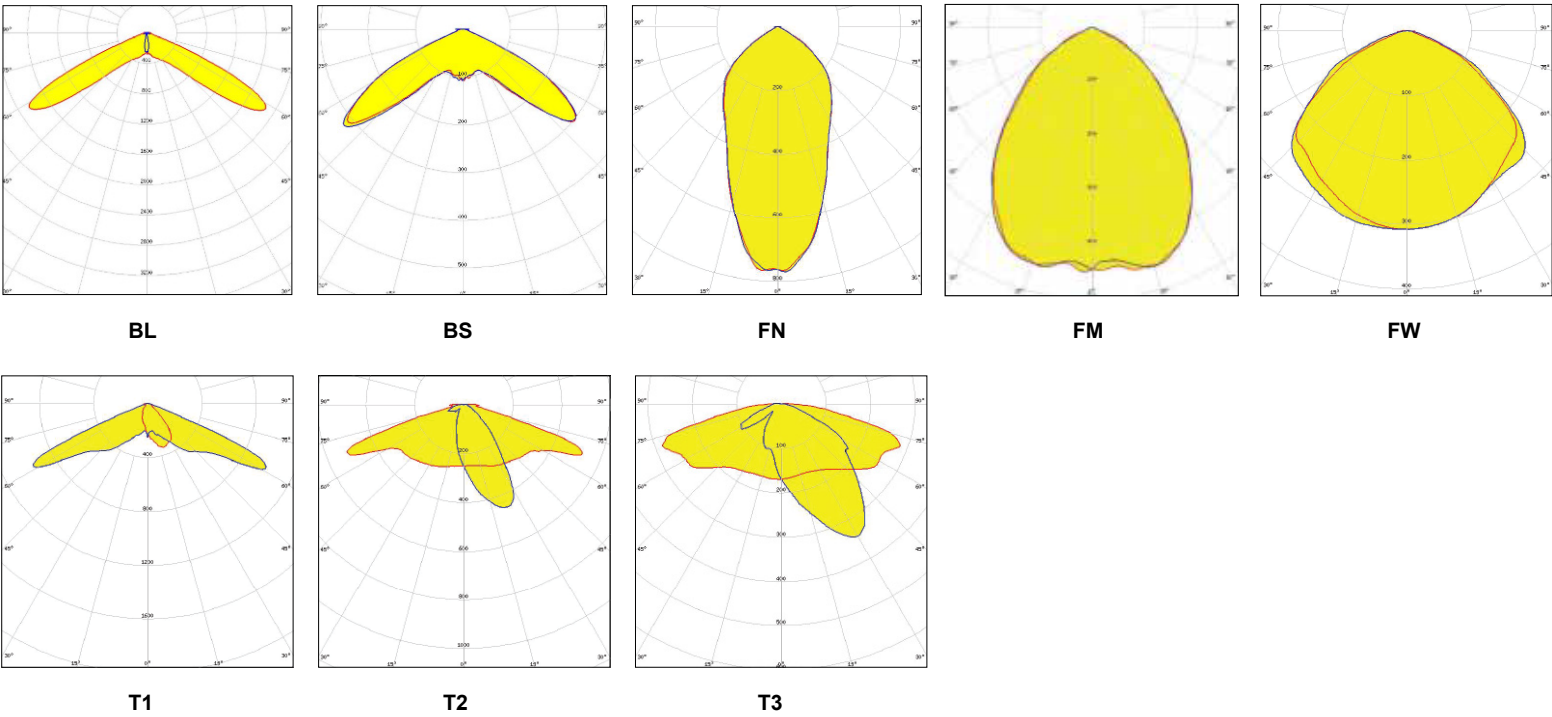


PROJECT INFORMATION		
JOB NAME	TYPE	
ORDERING CODE		

MEGA PUCK LENS - DETAILS



BEAM OPTIONS - DETAILS



PROJECT INFORMATION			
JOB NAME		TYPE	
ORDERING CODE			

ACCESSORIES

- Accessories**
- MEGA-SNOOT

MEGA-WAND

MEGA-PRISM

MEGA-DIAMOND

MEGA-GLOBE

MEGA-DGLOBE

MEGA-CGLOBE

MEGA-TOOL
- narrow beam deep regress for extreme cutoff

cylindrical opal optic

faceted clear globe

faceted clear diamond

opal globe

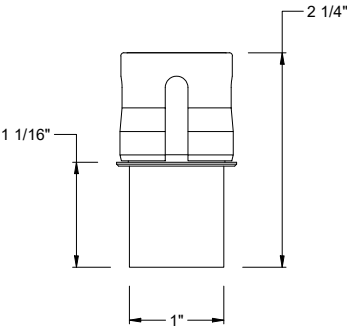
diffused globe

clear globe

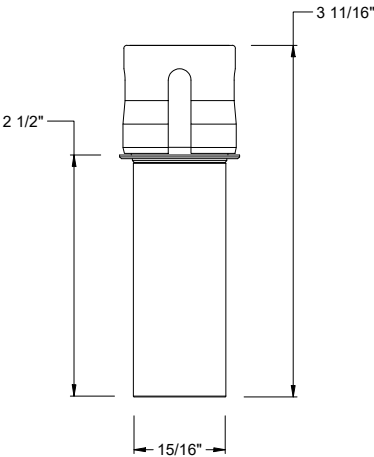
accessory tool

NOTES: Accessory will ship installed from factory when included in ordering code. Accessory will ship alone otherwise. Accessories applicable to degreed beams only.

SNOOT



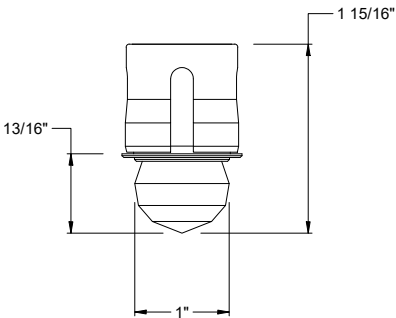
WAND



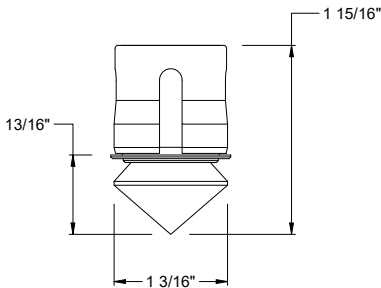
PROJECT INFORMATION			
JOB NAME		TYPE	
ORDERING CODE			

ACCESSORIES

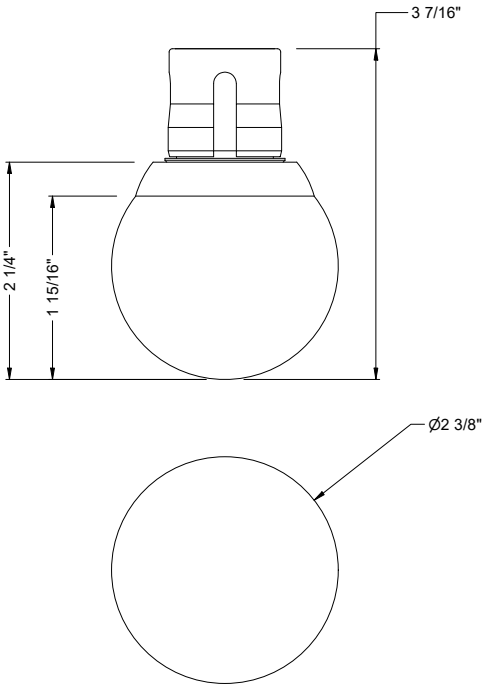
PRISM



DIAMOND



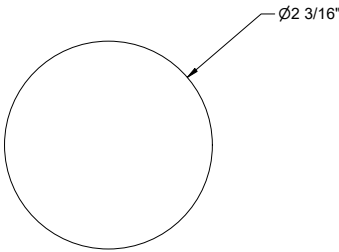
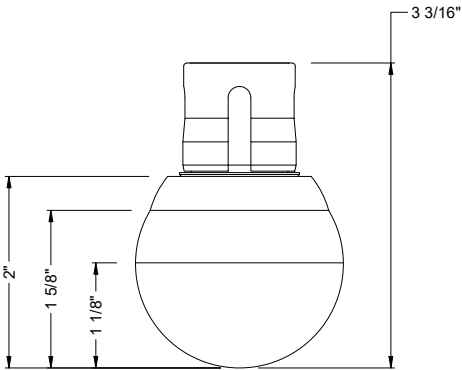
GLOBE



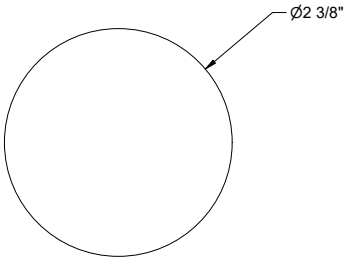
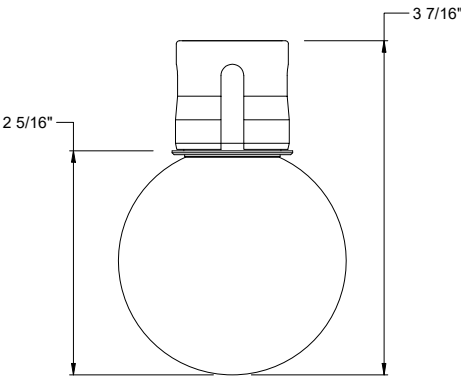
PROJECT INFORMATION			
JOB NAME		TYPE	
ORDERING CODE			

ACCESSORIES

DIFFUSED GLOBE



CLEAR GLOBE



PROJECT INFORMATION			
JOB NAME		TYPE	
ORDERING CODE			

REMOTE DRIVER - 0-10V ORDERING CODE

PART NUMBER	P70414	LED driver with box
CURRENT	400	400mA
	500	500mA
	600	600mA
	700	700mA
DIMMING	ECO	1%
	SOLO	0.1%

ORDERING CODE

Follow the steps to specify your fixture, example:

P70414 - 500 - ECO

See Wiring Diagram on page 5.

MAXIMUM PUCK WIRING DISTANCE

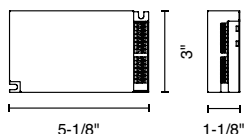
AWG VALUE	DISTANCE ¹ (FT)
20	300
18	600

NOTES

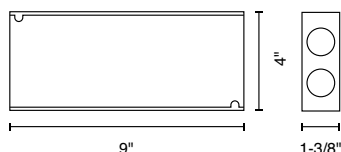
1. Maximum wiring distance from driver to the first puck.

MAXIMUM WIRING DISTANCE FROM DRIVER TO THE FIRST PUCK

AWG VALUE	DISTANCE (FT)
18	150
16	250
14	400
12	600
10	1000



ECO or SOLO 561/S



Box

-DESCRIPTION

-0-10V dimmable protocol LED drive with smooth flicker free dimming

-TECHNICAL SPECS

- 120-277Vac, 50/60Hz input
- 50W max output
- 700mA max DC constant current output per channel
- 2-55Vdc output per channel
- ECO 1% dimming - 1 channel output
- Solo 0.1% dimming - 2 channel output
- 0-10V compatible
- Operating temperature: -4°F to 122°F
- Class II rated
- Suitable for use in damp and dry locations
- Short circuit protection
- Overload protection
- Over-voltage protection
- Thermal protection
- LISTINGS

-ETLus Listed to UL2108 (suitable for dry and damp locations)

-cETL Listed to CSA C22.2 #250.0

DIMMING TYPE	mA	PUCK NUMBER
ECO	400-700mA	4
SOLO	700mA	4
SOLO	600mA	6
SOLO	500mA	6
SOLO	400mA	8

REMOTE DRIVER - DALI ORDERING CODE

PART NUMBER	P70469	LED driver with box
CURRENT	400	400mA
	500	500mA
	600	600mA
	700	700mA
DIMMING	ECO	1%
	SOLO	0.1%

ORDERING CODE

Follow the steps to specify your fixture, example:

P70469 - 500 - ECO

See Wiring Diagram on page 5.

MAXIMUM PUCK WIRING DISTANCE

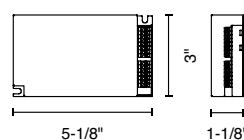
AWG VALUE	DISTANCE ¹ (FT)
20	300
18	600

NOTES

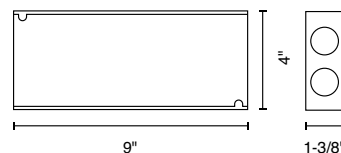
1. Maximum wiring distance from driver to the first puck.

MAXIMUM WIRING DISTANCE FROM DRIVER TO THE FIRST PUCK

AWG VALUE	DISTANCE (FT)
18	150
16	250
14	400
12	600
10	1000



ECO or SOLO 561/S



Box

-DESCRIPTION

-DALI dimmable protocol LED drive with smooth flicker free dimming

-TECHNICAL SPECS

- 120-277Vac, 50/60Hz input
- 50W max output
- 700mA max DC constant current output per channel
- 2-55Vdc output per channel
- ECO 1% dimming - 1 channel output
- Solo 0.1% dimming - 2 channel output
- DALI compatible
- Operating temperature: -4°F to 122°F
- Class II rated
- Suitable for use in damp and dry locations
- Short circuit protection
- Overload protection
- Over-voltage protection
- Thermal protection
- LISTINGS
- ETLus Listed to UL2108 (suitable for dry and damp locations)
- cETL Listed to CSA C22.2 #250.0

DIMMING TYPE	mA	PUCK NUMBER
ECO	400-700mA	4
SOLO	700mA	4
SOLO	600mA	6
SOLO	500mA	6
SOLO	400mA	8

PROJECT INFORMATION			
JOB NAME		TYPE	
ORDERING CODE			

REMOTE DRIVER - 10V ORDERING CODE

PART NUMBER	P70571	LED driver with box
VOLTAGE	24	24V
DIMMING	10V	0-10V dimming to 10%
ELECTRICAL OPTIONS	100 100-2 150 150-2 240 320 ¹	100W 2X 100W 150W 2X 150W 240W 320W

ORDERING CODE

Follow the steps to specify your fixture, example:

P70571 - 24 - 10V - 150

See wiring diagram on page 5.

NOTES

1. 320W driver dimming performance of 15% at 25 pucks and 20% at 20 pucks.

MAXIMUM WIRING DISTANCE FROM DRIVER TO START OF RUN LENGTH AT VARIOUS LOADS

NO. OF MEGA PUCKS	5	10	15	20	25
AWG VALUE	DISTANCE (FT)				
10	100	100	75	60	40
12	100	75	50	40	30
14	75	50	35	25	20

MAXIMUM MEGA PUCKS PER DRIVER

DISTANCE	200 FT OR LESS FOR ALL OPTIONS BELOW
DRIVER OUTPUT	NO. OF MEGA PUCKS
100W	1 TO 7
150W	8 TO 11
240W*	12 TO 17
320W*	21 TO 25 AT 15% DIM18 TO 20 AT 20% DIM

NOTE

*Must use driver with allowable range of skylines to achieve specified dimming performance.

Example: 320W driver with 10 pucks will not dim to the specified percentage.

DESCRIPTION

- Meanwell ELG-100 Class 2 Power Supply
- Meanwell ELG-150 / 240 or HLG-320H Class 1 Power Supply
- 0-10V Dimmable to 10% with 100W / 150W and 240W drivers
- 0-10V Dimmable to 15% with 320W at 25 pucks and 20% at 20 pucks
- 12"x12"x4" Indoor or Outdoor metal housing
- 1/2 KOs, 3/4 KOs, 1 KOs, 1-1/4 KOs and (4x) mounting holes

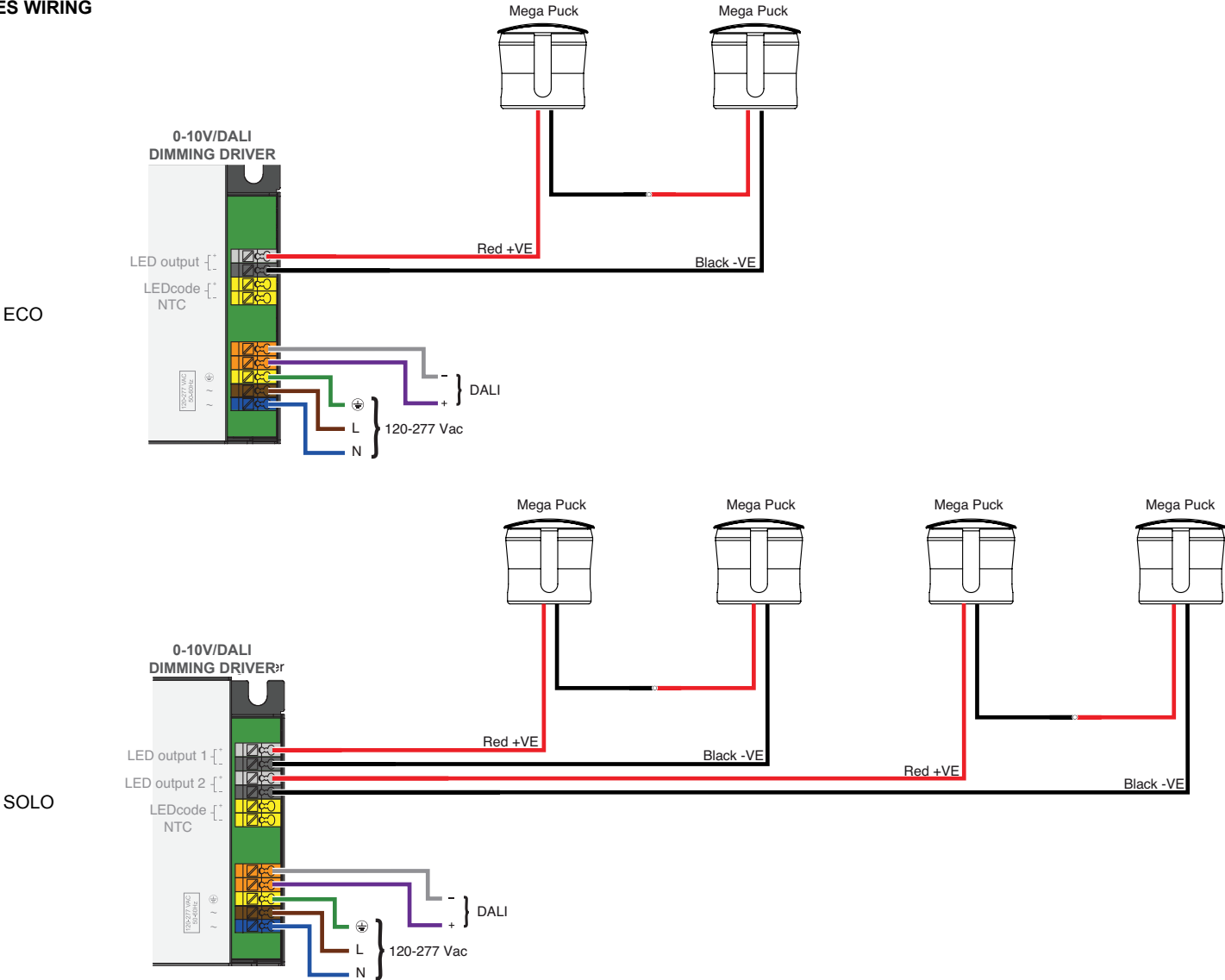
ELECTRICAL/CONTROLS

- 90-305 VAC, 47-63Hz input
- 100W / 150W / 240W / 320W max output
- Ambient temperature @ full load: -40°C / -40°F to +60°C / 140°F
- NEMA 3R enclosure
- Outdoor rated: Rainproof
- Short circuit protection
- Overload protection
- Over-voltage protection
- Thermal protection
- Built in PFC function
- Box: Length = 12", Height = 12", Width = 4"

PROJECT INFORMATION			
JOB NAME		TYPE	
ORDERING CODE			

WIRING DIAGRAM

SERIES WIRING



PARALLEL WIRING

