

PROJECT INFORMATION		
JOB NAME		TYPE
ORDERING CODE		

## NU essentials

### 4" Round & Square Downlight Standard White



30° - 80° BEAM (Note: Specifications are subject to change without notice)		
14mm COB PERFORMANCE DATA		
LED LIGHT ENGINE	NOMINAL DELIVERED LUMENS	SYSTEM WATTAGE
10LM	1070LM @30K/90CRI	11W
13LM	1360LM @30K/90CRI	14W
15LM	1560LM @30K/90CRI	16W
20LM	2000LM @30K/90CRI	21W
Notes	Delivered lumens based 40D with no lens (see page 2)	



eldoLED  
your product | our drive

#### FEATURES

- Economical choice for budget projects
- Thermally optimized for LED longevity
- Fully casted assembly
- 30° - 80° optical beam control
- Packaging material consists of 60-80% post-consumer recycled fiber

#### DIMMING AND CONTROLS

- eldoLED Flicker free 0-10V dimming to 1%
- Leading & trailing edge (Triac/ELV) dimming to 1%

#### CONSTRUCTION

- Aluminum trim and bezel
- Electrocoated 16-gauge cold-rolled steel construction
- Accommodates ceiling thickness from 1/4" to 1"

#### LED

- 90 CRI: SDCM = 2-step MacAdam Ellipse, Lumen Maintenance: L<sub>70</sub> > 66,000 hrs

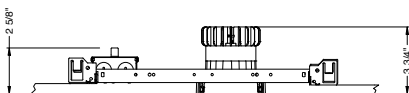
#### LISTING

- ULus Listed to UL1598; cUL Listed to CSA C22.2 #250.0
- NSF/ANSI-2 with lens (Non-Food and Splash Zones)
- IP44 with lens - suitable for wet location with lens - suitable damp location without lens
- 5 Year Limited warranty

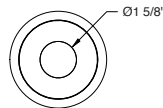
#### ELECTRICAL

- 120V-277V, 120 only Triac / ELV
- Power factory ≥ 0.9
- 2kV driver input surge protection
- 10W (T20 CEC) EM 90min battery
- Max. ambient installation temperature 104°F (40°C)

#### FIXTURE HEIGHT

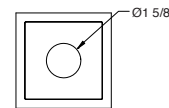


#### ROUND

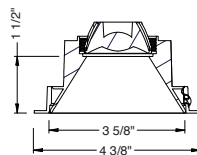


ceiling cutout  
4" diameter  
ceiling thickness  
1/4" to 1"

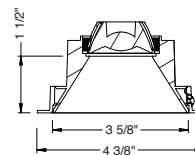
#### SQUARE



ceiling cutout  
4" x 4" square  
ceiling thickness  
1/4" to 1"



aperture dimensions



aperture dimensions

# alphabet

PROJECT INFORMATION		
JOB NAME		TYPE
ORDERING CODE		

## 30°- 80° BEAM ORDERING CODE

<b>SERIES</b>	<b>NUE4</b>	NUE					
<b>TYPE</b>	<b>RD</b>	round downlight					
	<b>QD</b>	square downlight					
<b>LED</b>	<b>SW</b>	standard white					
<b>DELIVERED LUMENS</b>	<b>10LM</b>	1070 lm					
	<b>13LM</b>	1360 lm					
	<b>15LM</b>	1560 lm					
	<b>20LM</b>	2000 lm					
	Standard Configuration: 3000K 90CRI 40D NL Calculated Delivered Lumens = [Delivered Lumen Value] x [CCT Multiplier] x [Reflector Multiplier]						
<b>CCT</b>	<b>27K</b>	2700K	CCT	2700K	3000K	3500K	4000K
	<b>30K</b>	3000K	CRI	90+	90+	90+	90+
	<b>35K</b>	3500K	CCT MULTIPLIER FOR LUMEN OUTPUT	.96	1	1.03	1.06
	<b>40K</b>	4000K					
<b>CRI</b>	<b>90</b>	90 CRI					
<b>OPTIC &amp; LM MULTIPLIER</b> SEE PAGE 3	<b>30D</b>	30 degrees					(0.95)
	<b>40D</b>	40 degrees					(1.00)
	<b>60D</b>	60 degrees					(1.00)
For 80° choose '60D' + 'DL' lens.							
<b>LENS</b>	<b>NL<sup>1</sup></b>	no lens					(1.00)
	<b>CL<sup>2</sup></b>	clear lens					(0.95)
	<b>DL<sup>2</sup></b>	diffused lens					(0.76)
	<b>HET<sup>2</sup></b>	high efficiency textured lens, similar to Solite™					(0.92)
	<b>HCL<sup>3</sup></b>	honeycomb louver					(0.64)
<b>TRIM COLOR</b>	<b>BK</b>	black					
	<b>WH</b>	white					
	<b>MC</b>	matte chrome					
<b>BEZEL COLOR</b>	<b>BK</b>	black					(0.95)
	<b>WH</b>	white					(1.00)
	<b>MC</b>	matte chrome					(0.99)

## 30°- 80° BEAM ORDERING CODE

<b>MOUNTING OPTIONS</b> SEE PAGE 4, 6	<b>NC</b>	new construction with ceiling fitting plate
	<b>NCIC<sup>4</sup></b>	new construction with ceiling fitting plate, insulation contact rated (no housing required)
	<b>IC</b>	insulation contact housing
	<b>ICAT</b>	insulation contact/airtight housing
	<b>CP</b>	chicago plenum housing
	<b>RET</b>	retrofit, no ceiling fitting plate
	<b>RETIC<sup>4</sup></b>	retrofit, no ceiling fitting plate, insulation contact rated (no housing required)
<b>VOLTAGE</b>	<b>I20</b>	120V
	<b>UNV</b>	120V-277V
<b>DIMMING</b>	<b>DIM10</b>	eldoLED flicker free 0-10V dimming to 1%
	<b>ELV1<sup>5</sup></b>	leading & trailing edge (Triac/ELV) dimming to 1%
<b>ELECTRICAL OPTIONS</b>	<b>EMI0CA20</b>	emergency battery backup, 90 minutes at 10W to LED, CA title 20

## ADDITIONAL MOUNTING INFO

New Construction Bar Hangers (included)	Mounting Length: 14-3/4" to 26"
Extension Kit p/n: K20266 (ordered separately, 1 per fixture)	Extends a pair of Bar Hangers Total Mounting Length: 29" to 48"

## YOUR COMPLETED ORDERING CODE

Follow the steps to specify your fixture, example:
<b>NUE4 - RD - SW - 20LM - 30K - 90 - 30D - NL - WH - WH - NC - UNV - DIM10</b>

## NOTES

- NL lens option does not meet requirements for WET/NSF listings.
- CL/DL/HET lens options with IC or ICAT housing are JA8 compliant.
- HCL cannot be used with lens (max 1 media).
- NCIC/RETIC are available in 10LM/13LM rated for insulation contact (IC), no "IC-Housing" required.
- ELV1 available in 120V.

# alphabet

PROJECT INFORMATION		
JOB NAME		TYPE
ORDERING CODE		

## TRIM OPTIONS

### TRIM/BEZEL COLORS



## OPTICAL OPTIONS

- UGR calculation based on CIE 117-1995; room size: 4H X 8H, reflectance: 70/50/20;
- UGR calculation based on 15LM fixtures, unless otherwise noted.



OPTIC	BEAM ANGLE	UGR
30D	30	8.5
40D	37	7.7
60D	47	13.9



OPTIC	BEAM ANGLE	UGR
30D	31	14
40D	41	11
60D	58	17.9



OPTIC	BEAM ANGLE	UGR
30D	32	13.4
40D	42	11.9
60D	58	17.9



OPTIC	BEAM ANGLE	UGR
30D	65	21.2
40D	70	22.3
60D	80	23.2



OPTIC	BEAM ANGLE	UGR
30D	34	13.5
40D	41	13.9
60D	56	18.8

# alphabet

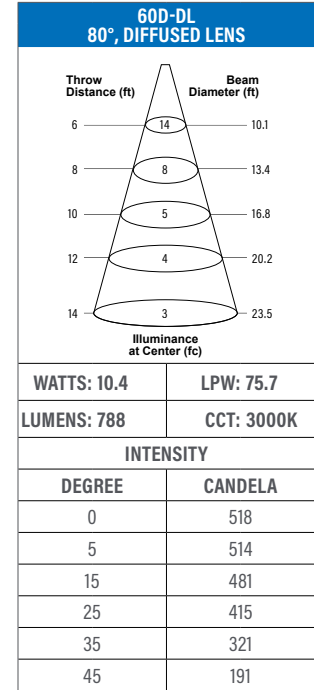
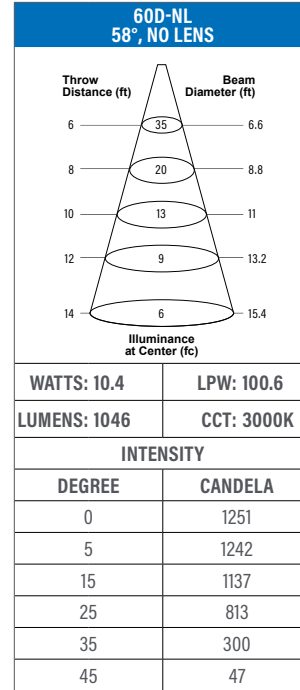
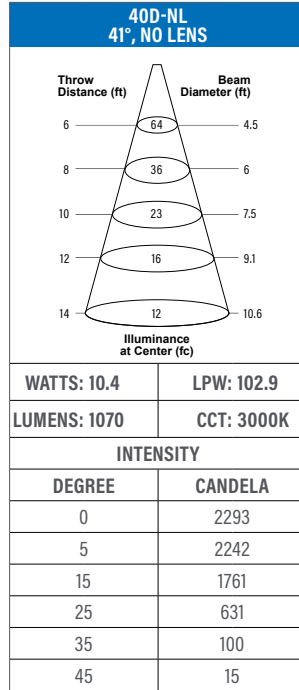
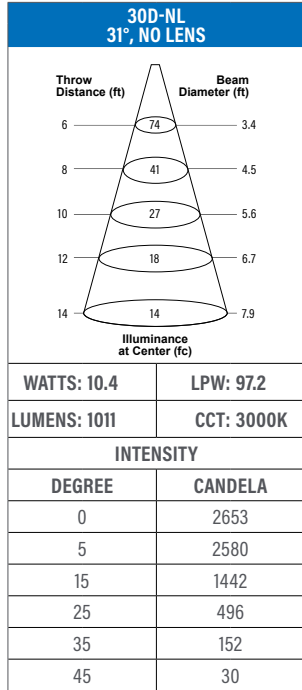
PROJECT INFORMATION		
JOB NAME		TYPE
ORDERING CODE		

## PHOTOMETRIC DATA

### 10LM CCT MULTIPLIERS

	90CRI
2700K	0.96
3000K	1
3500K	1.03
4000K	1.06

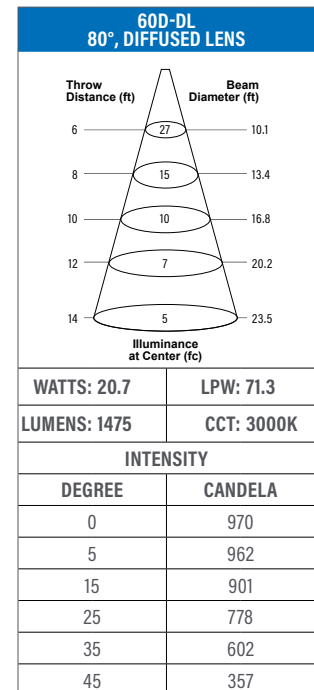
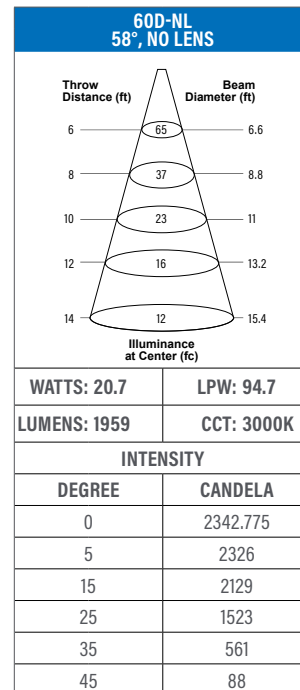
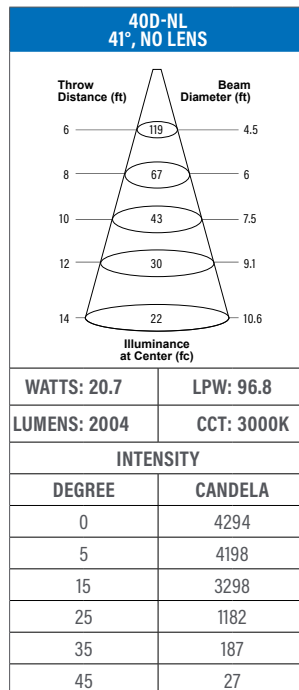
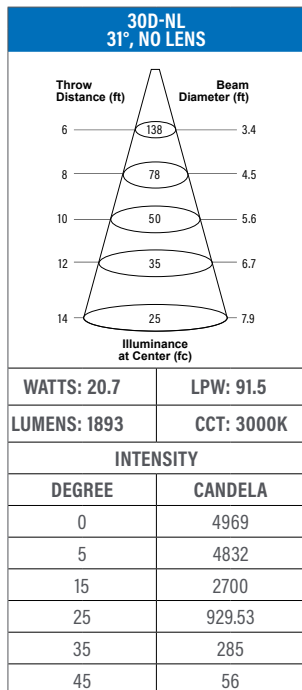
FC Formula = CBCP / Distance<sup>2</sup>



### 20LM CCT MULTIPLIERS

	90CRI
2700K	0.96
3000K	1
3500K	1.03
4000K	1.06

FC Formula = CBCP / Distance<sup>2</sup>

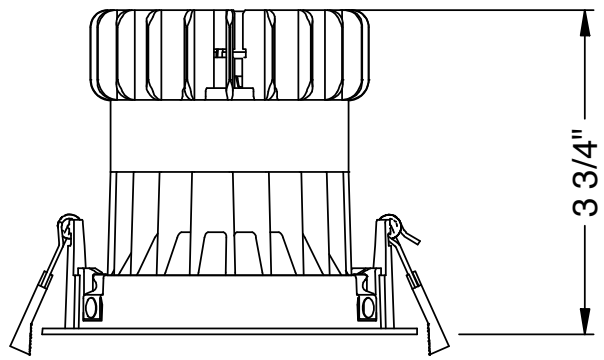


# alphabet

PROJECT INFORMATION		
JOB NAME		TYPE
ORDERING CODE		

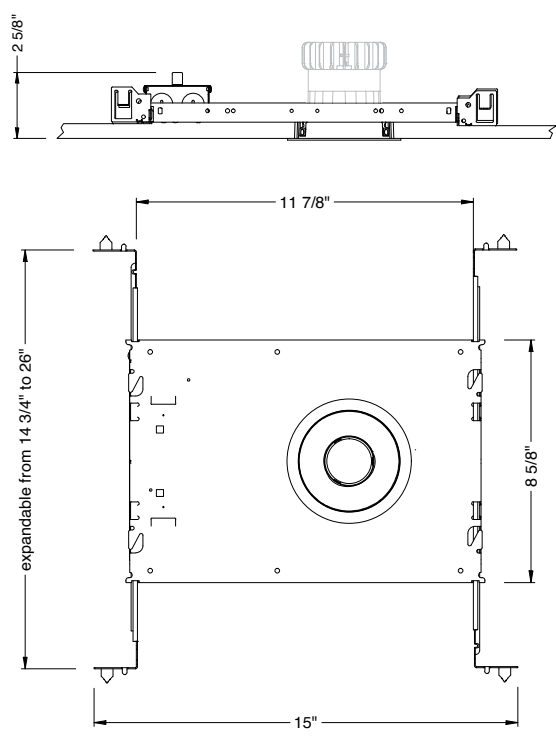
## MOUNTING OPTIONS

### FIXTURE HEIGHT

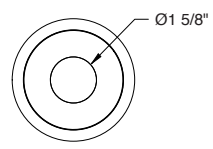


### NC - NEW CONSTRUCTION

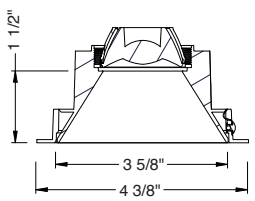
#### TRIM



#### ROUND

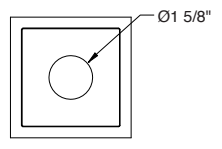


ceiling cutout  
4" diameter  
ceiling thickness  
1/4" to 1"

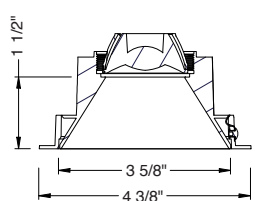


aperture dimensions

#### SQUARE



ceiling cutout  
4" x 4" square  
ceiling thickness  
1/4" to 1"

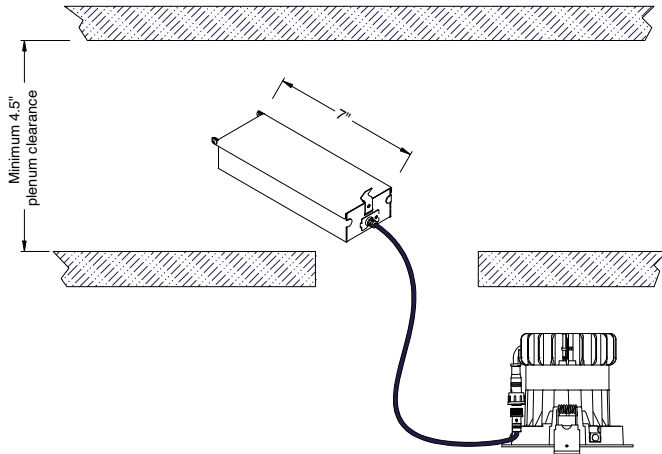


aperture dimensions

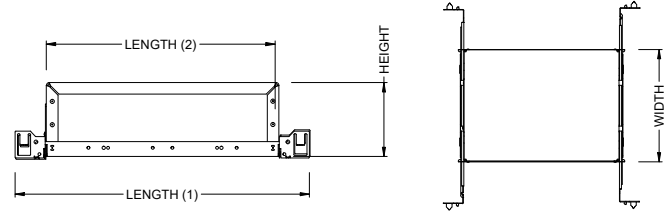
PROJECT INFORMATION			
JOB NAME		TYPE	
ORDERING CODE			

## MOUNTING OPTIONS (CONTINUED)

### NC - RET - NCIC - RETIC



### IC - INSULATION CONTACT HOUSING ICAT - INSULATION CONTACT / AIR TIGHT CP - CHICAGO PLENUM



BOX SIZE	L 1	L 2	W	H
A	15 - 7/16"	11 - 3/4"	8 - 1/2"	6 - 3/4"

RATINGS / CERTIFICATIONS	NC	RET	IC	ICAT	CP	NCIC	RETIC
TYPE NON-IC	✓	✓					
TYPE IC			✓	✓		✓	✓
CHICAGO PLENUM (CCEA)					✓		
SUITABLE FOR AIR HANDLING PLENUMS	✓	✓	✓	✓	✓	✓	✓

BOX TYPE / LUMEN OUTPUT - STANDARD BEAMS (30° - 80)			
LUMEN OUTPUT	BOX - A		
	IC	ICAT	CP
10LM	✓	✓	✓
15LM	✓	✓	✓
20LM	✓	✓	✓

CEILING THICKNESS	
FIXTURE TYPE	MOUNTING TYPE
	STANDARD CEILING THICKNESS
TRIM	1/4" to 1"

PROJECT INFORMATION		
JOB NAME		TYPE
ORDERING CODE		

## BATTERY OPTIONS

### EMERGENCY BATTERY

IOTA's ILB Battery Backups are UL Listed LED emergency drivers that allow the same LED fixture to be used for both normal and emergency operation. In the event of a power failure, the ILB switches to the emergency mode and operates the existing fixture for 90 minutes. The unit contains a battery, charger, and converter circuit in a single can. The Constant Power design of the ILB maintains the output wattage to the LED array even as the system voltage diminishes. UL 924 Listed for U.S. and Canada. UL 1310 Certified, Output Class 2 Compliant. Includes single-piece TBTS test switch and charge indicator accessory kit. For use with switched and unswitched fixtures, and includes Two-wire universal AC input. Meets or exceeds all National Electric Code and Life Safety Code Emergency Lighting Requirements. Rated for use in Plenum, Damp Location, Recessed Type IC, and Enclosed and Gasketed Luminares.

### REMOTE TEST SWITCH

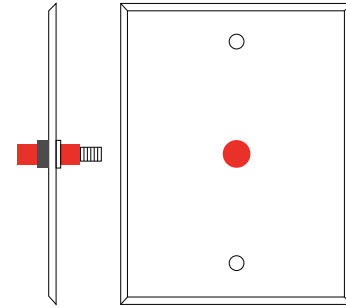
The Remote Test Switch may be mounted adjacent to the LED Fixture by others.

### EMERGENCY BATTERY ACCESS

Above ceiling access is required.

### REMOTE LOCATION

Maximum remote mounting distance of the emergency driver shall be 50 feet. Remote location wiring provided by others. Follow all Local and National Electric/ Building Codes.

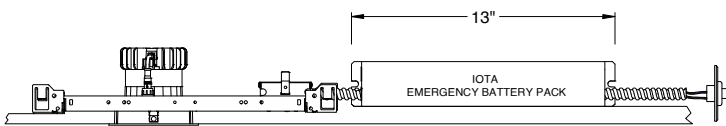


Remote Test Switch

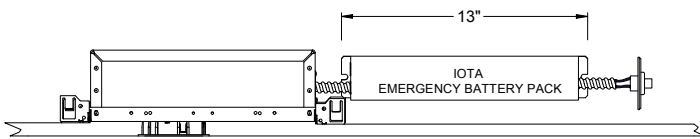
EM MODE OUTPUT (DELIVERED LUMENS)	
LUMEN ORDERING CODE	EM10
10 LM OPTION	990LM

Notes: Based on 30K, 90CRI

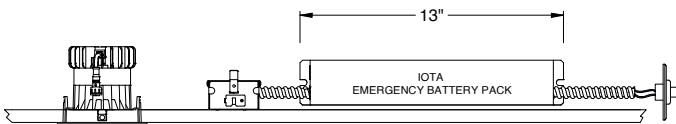
### NC - NEW CONSTRUCTION WITH EM BATTERY (REMOTE TEST SWITCH)



### IC / ICAT / CP - INSULATION CONTACT HOUSING WITH EM BATTERY (REMOTE TEST SWITCH)

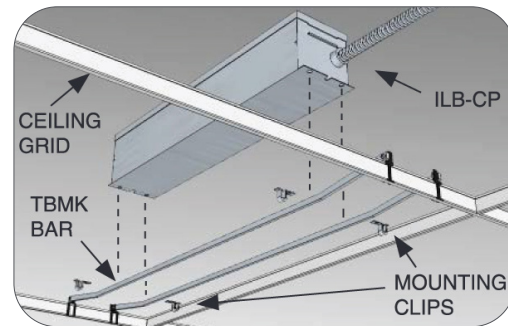


### RET - RETROFIT WITH EM BATTERY (REMOTE TEST SWITCH)



### Accessory

76066 Optional T-Grid Mounting Kit<sup>1</sup>



1. Can be used with any of the Emergency Battery Backups. Must be ordered as a separate line item.