

Light efficiency:

65 Lumen/Watt

Light quality:

CRI: 93.0

Color temperature:

2965 K

Output: 1334 lm

Peak: 3501 cd

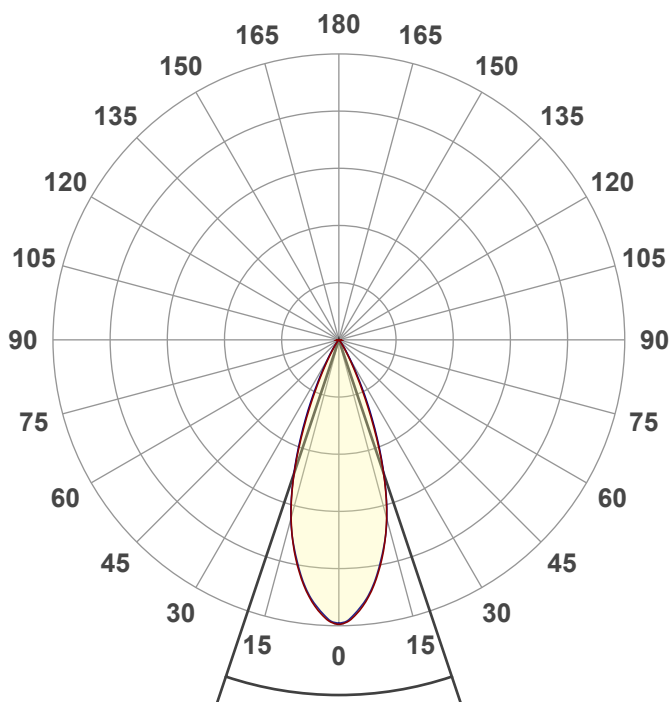
Power: 20.4 W

PF: 0.97



NUE4-RD-SW-20LM-30K-90-40D-HCL-WH-WH

Date and time:
8/1/2023 12:25:02 PM



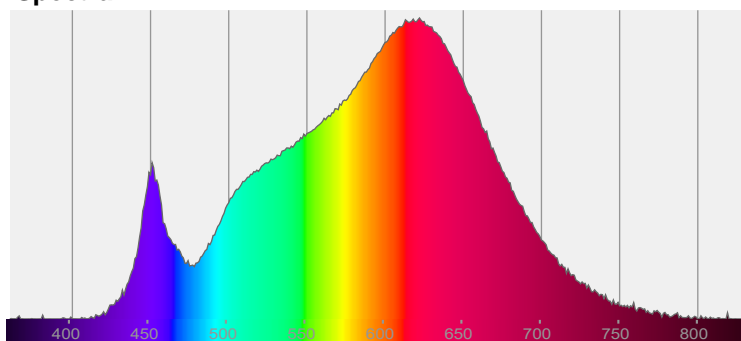
Beam angle

37.1°

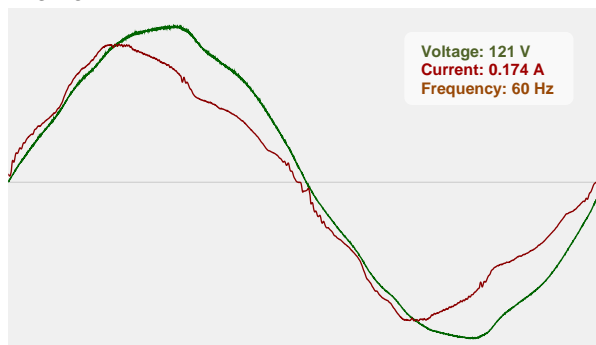


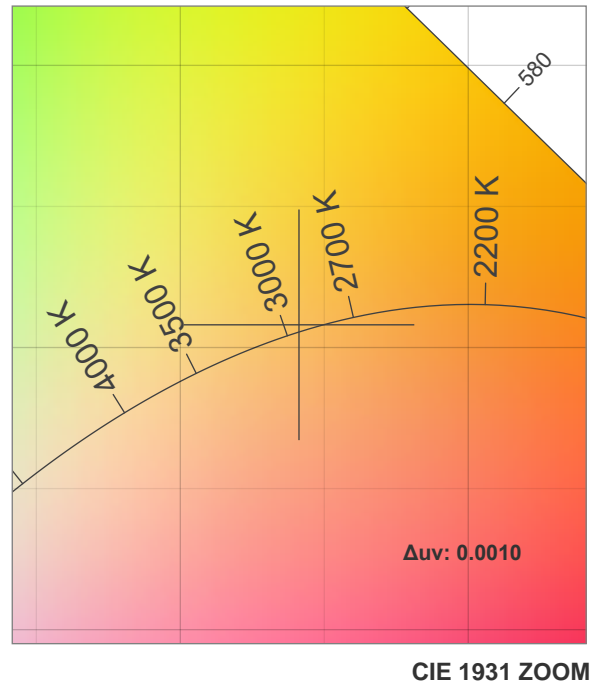
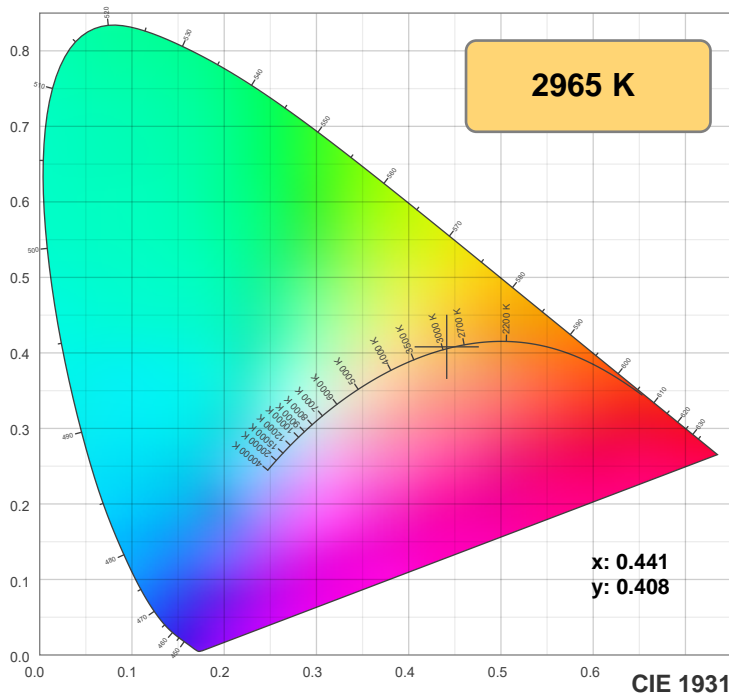
CIE 1931
x: 0.441
y: 0.408

Spectra

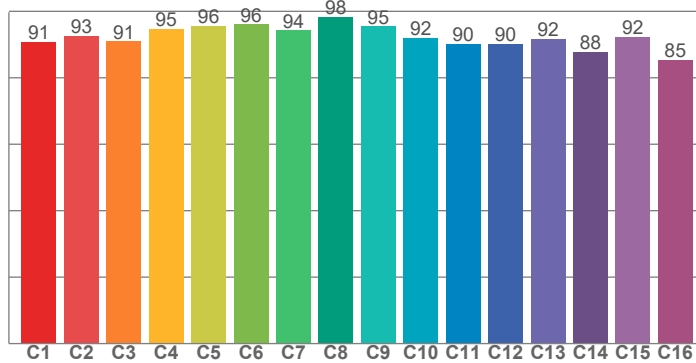


Power

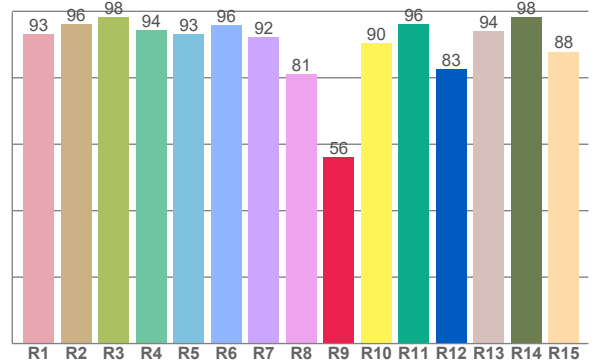




TM30: 92.4



CRI: 93.0 (R1-R8)



CRI R values, only R1-R8 are used to calculate final CRI value

R1	R2	R3	R4	R5	R6	R7	R8	R9	R10	R11	R12	R13	R14	R15
93.2	96.0	98.2	94.4	93.1	95.8	92.2	81.1	56.2	90.3	96.2	82.6	94.0	98.3	87.8

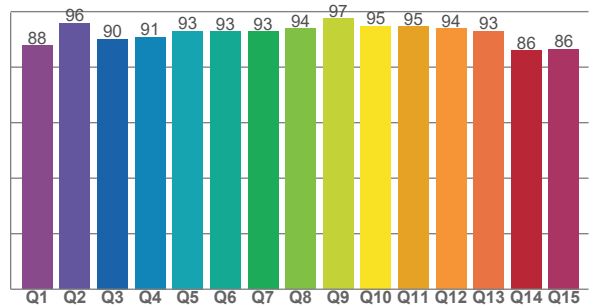
TM30 C values, 16 binned values out of total of 99 C values

C1	C2	C3	C4	C5	C6	C7	C8	C9	C10	C11	C12	C13	C14	C15	C16
90.7	92.5	91.0	94.7	95.6	96.1	94.2	98.4	95.5	92.1	90.1	90.2	91.8	87.8	92.3	85.4

CQS Q values

Q1	Q2	Q3	Q4	Q5	Q6	Q7	Q8	Q9	Q10	Q11	Q12	Q13	Q14	Q15
87.7	95.8	90.1	90.9	93.1	92.9	92.8	93.9	97.5	94.9	94.6	93.9	93.1	85.9	86.5

CQS: 91.4



Color parameters

Color temperature	Color rendering index	Red component	Color fidelity	Color gamut	Color quality scale	Color coordinate cie 1931	Color coordinate cie 1931	Color coordinate	Color coordinate	Color deviation from black body
CCT	CRI	CRI R9	TM30 Rf	TM30 Rg	CQS	x	y	u	v	Δuv
2965 K	93.0	56.2	92.4	99.2	91.4	0.441	0.408	0.252	0.349	0.0010

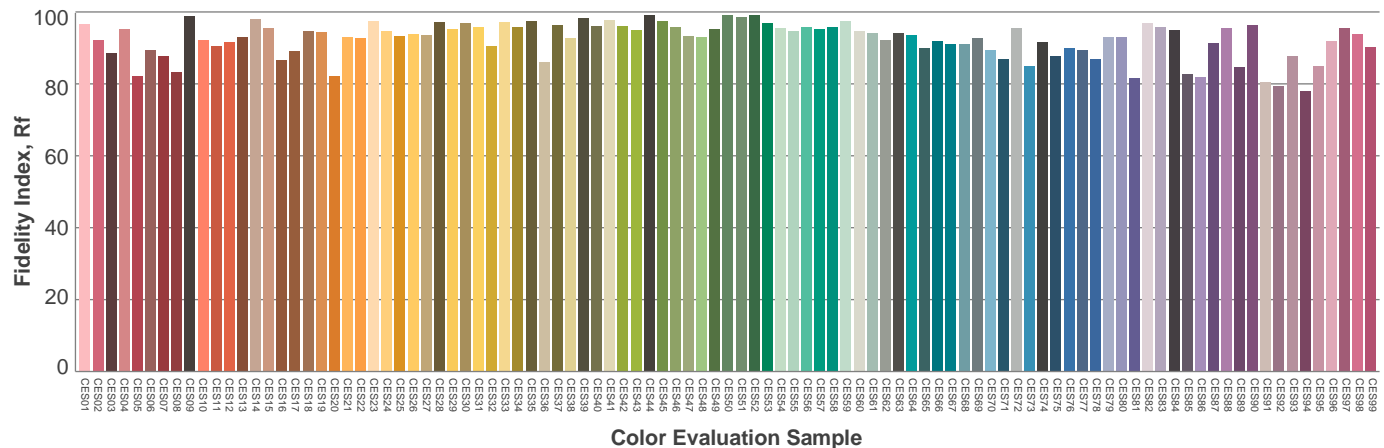
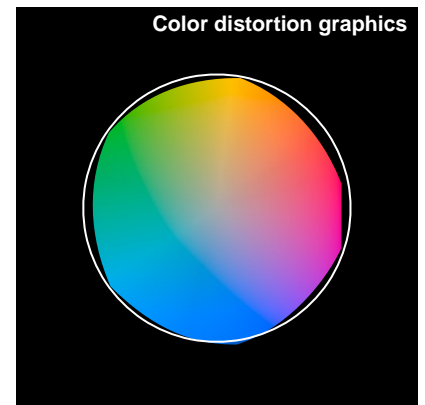
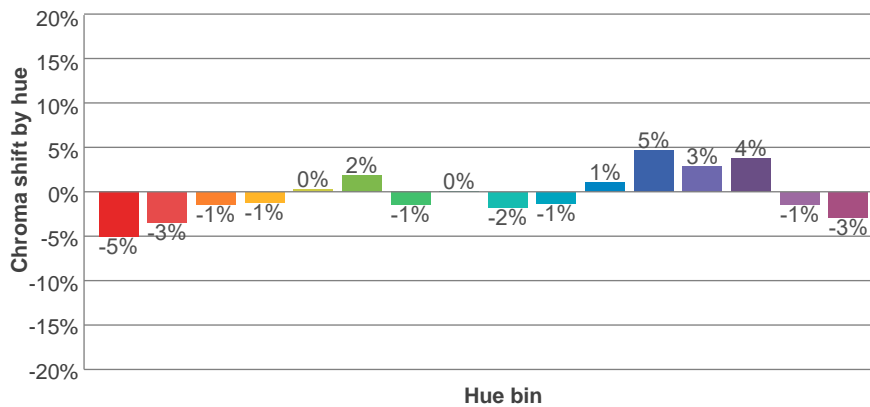
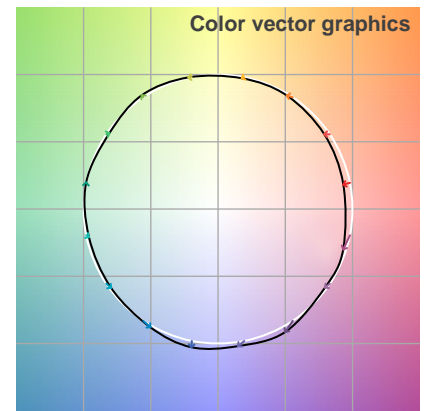
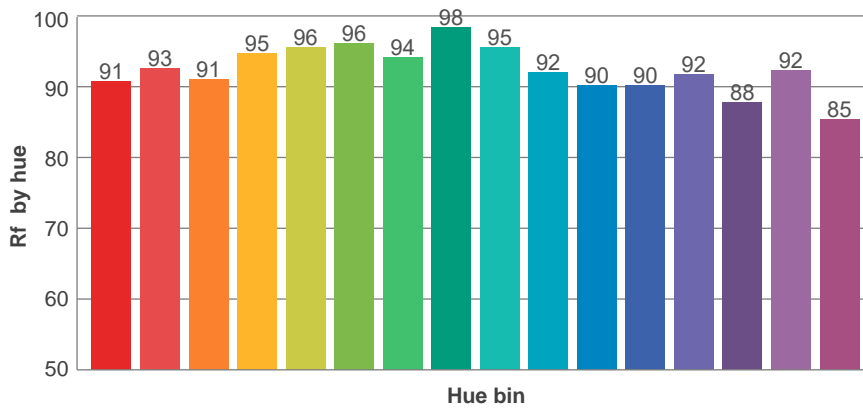
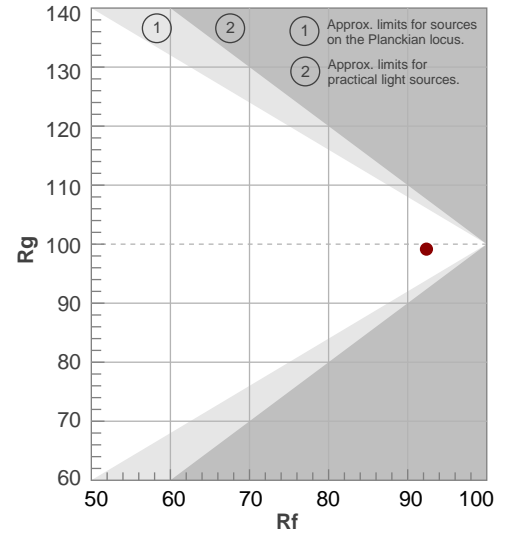
Rf 92.4

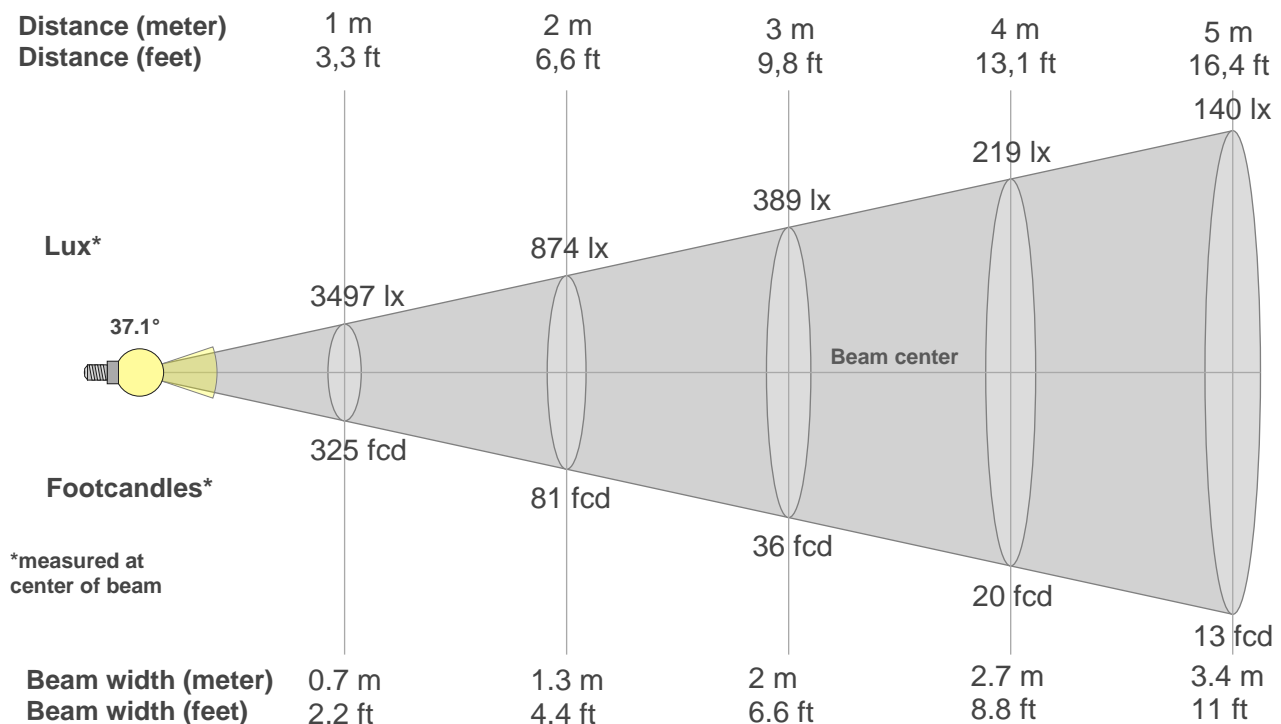
Fidelity index Rf

Rg 99.2

Gammut index Rg

Hue Bin	R _f	Graphic shifts (%)	
		Chroma	Hue
1	91	-5%	0%
2	93	-3%	2%
3	91	-1%	4%
4	95	-1%	2%
5	96	0%	3%
6	96	2%	0%
7	94	-1%	-2%
8	98	0%	0%
9	95	-2%	2%
10	92	-1%	5%
11	90	1%	7%
12	90	5%	1%
13	92	3%	-5%
14	88	4%	-9%
15	92	-1%	-4%
16	85	-3%	-11%





Beam intensities from 1-20m

1m	2m	3m	4m	5m	6m	7m	8m	9m	10m	11m	12m	13m	14m	15m	16m	17m	18m	19m	20m
3.3ft	6.6ft	9.8ft	13.1ft	16.4ft	19.7ft	23ft	26.2ft	29.5ft	32.8ft	36.1ft	39.4ft	42.7ft	45.9ft	49.2ft	52.5ft	55.8ft	59.1ft	62.3ft	65.6ft
3497lx	874lx	389lx	219lx	140lx	97lx	71lx	55lx	43lx	35lx	29lx	24lx	21lx	18lx	16lx	14lx	12lx	11lx	10lx	9lx
324.9fcd	81.2fcd	36.1fcd	20.3fcd	13fcd	9fcd	6.6fcd	5.1fcd	4fcd	3.2fcd	2.7fcd	2.3fcd	1.9fcd	1.7fcd	1.4fcd	1.3fcd	1.1fcd	1fcd	0.9fcd	0.8fcd

Intensities in 0° c-plane

0°	2°	4°	6°	8°	10°	12°	14°	16°	18°	20°	22°	24°	26°	28°	30°	32°	34°	36°	38°
3497	3461	3359	3226	3061	2863	2645	2401	2127	1815	1473	1123	810	551	359	229	146	92	58	35
100%	99%	96%	92%	88%	82%	76%	69%	61%	52%	42%	32%	23%	16%	10%	7%	4%	3%	2%	1%

Intensities in 90° c-plane

0°	2°	4°	6°	8°	10°	12°	14°	16°	18°	20°	22°	24°	26°	28°	30°	32°	34°	36°	38°
3497	3443	3335	3208	3042	2843	2630	2404	2134	1825	1506	1186	889	629	425	279	182	117	71	42
100%	98%	95%	92%	87%	81%	75%	69%	61%	52%	43%	34%	25%	18%	12%	8%	5%	3%	2%	1%

Intensities in 180° c-plane

0°	2°	4°	6°	8°	10°	12°	14°	16°	18°	20°	22°	24°	26°	28°	30°	32°	34°	36°	38°
3497	3461	3359	3226	3061	2863	2645	2401	2127	1815	1473	1123	810	551	359	229	146	92	58	35
100%	99%	96%	92%	88%	82%	76%	69%	61%	52%	42%	32%	23%	16%	10%	7%	4%	3%	2%	1%

Intensities in 270° c-plane

0°	2°	4°	6°	8°	10°	12°	14°	16°	18°	20°	22°	24°	26°	28°	30°	32°	34°	36°	38°
3497	3443	3335	3208	3042	2843	2630	2404	2134	1825	1506	1186	889	629	425	279	182	117	71	42
100%	98%	95%	92%	87%	81%	75%	69%	61%	52%	43%	34%	25%	18%	12%	8%	5%	3%	2%	1%

Beam angle 50%	Field angle 10%	Cutoff angle 2,5%	Intensity ratio in 120° cone	Intensity ratio in 90° cone
37.1°	57°	69.6°	99.5%	99.2%