

PROJECT INFORMATION		
JOB NAME		TYPE
ORDERING CODE		

NU6

6" Round Wall Wash Tamper Resistant Standard White

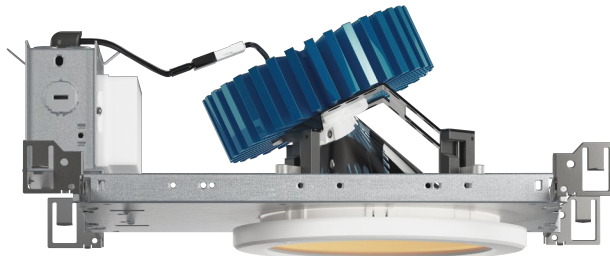


AT
airtight

DF
dead-front

PR
plenum rated

wet rated



30° - 70° BEAM (Note: Specifications are subject to change without notice)		
14mm COB PERFORMANCE DATA		
LED LIGHT ENGINE	NOMINAL DELIVERED LUMENS	SYSTEM WATTAGE
10LM	800LM @30K/80CRI	9W
15LM	1200LM @30K/80CRI	14W
20LM	1600LM @30K/80CRI	16W
25LM	2000LM @30K/80CRI	20W
30LM	2415LM @30K/80CRI	24W
35LM	2808LM @30K/80CRI	28W
40LM	3210LM @30K/80CRI	32W
10LM	600LM @30K/90CRI	9W
15LM	1020LM @30K/90CRI	14W
20LM	1360LM @30K/90CRI	16W
25LM	1700LM @30K/90CRI	20W
30LM	2050LM @30K/90CRI	24W
35LM	2380LM @30K/90CRI	28W
40LM	2720LM @30K/90CRI	32W
Notes	Delivered lumens based on WW	

eldoLED
your preferred dimmer choice



CASAMBI



FEATURES

- Designed to meet NYS-OMH rigorous requirements
- Spun aluminum frame with stainless steel tamper resistant screws
- Polycarbonate (3mm) shatter proof lensing
- Antimicrobial (Microban) painted finishes

DIMMING AND CONTROLS

- eldoLED flicker free 0-10V dimming to 0% and 1%
- eldoLED flicker free DALI dimming to 0% and 1%
- DMX dim to zero
- Lutron Hi-lumen 2-Wire (Eco System) dimming to 0.1% and 1%
- Leading & trailing edge (Triac/ELV) dimming to 1%
- Casambi bluetooth dimming to 1.0%
- NLight control interface dimming to 0%

CONSTRUCTION

- Aluminum 6061 lensing frame
- 18-8 stainless steel tamper resistant screws
- Shatter resistant Polycarbonate (PC) lensing
- Electrocoated 16-gauge cold rolled steel construction
- Accommodates ceiling thickness from 1/8" to 1-5/8"

LED

- 90 CRI: SDCM = 2-step MacAdam Ellipse, Lumen Maintenance: L₇₀ > 66,000 hrs
- 80 CRI: SDCM = 2-step MacAdam Ellipse, Lumen Maintenance: L₇₀ > 66,000 hrs

LISTING

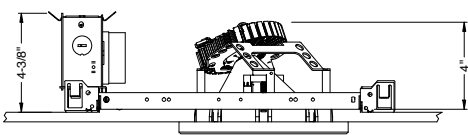
- ULus Listed to UL1598 & UL2108; cUL Listed to CSA C22.2 #250.0
- IP65 with lens - Suitable for wet locations
- Non-conductive, dead-front construction (shower approved)
- NSF/ANSI-2 with lens (Non-Food and Splash Zones)
- NYSOMH - New York State Office of Mental Health compliant
- 5 Year Limited warranty

ELECTRICAL

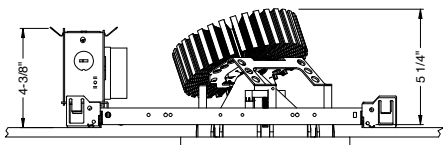
- 120V-277V, 120 only Triac / ELV
- Power factory ≥ 0.9
- 2kV driver input surge protection
- Remote emergency test switch
- 7W, 10W (T20 CEC) and 12W EM 90min battery
- Max. ambient installation temperature 95°F (35°C)

FIXTURE HEIGHT

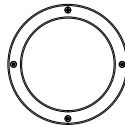
10LM - 30LM LOW LUMENS



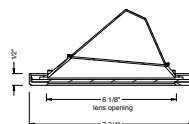
40LM HIGH LUMENS



TAMPER RESISTANT



ceiling cutout
6-3/8" diameter
ceiling thickness
1/8" to 1-5/8"



alphabet

PROJECT INFORMATION		
JOB NAME		TYPE
ORDERING CODE		

WW BEAM ORDERING CODE																													
SERIES	NU6	NU6																											
TYPE	RWTR	round wall wash tamper resistant																											
LED	SW	standard white																											
DELIVERED LUMENS	10LM	800 lm																											
	15LM	1200 lm																											
	20LM	1600 lm																											
	25LM	2000 lm																											
	30LM	2415 lm																											
	35LM	2710 lm																											
	40LM	3100 lm																											
	Standard Configuration: 3000K 80CRI WW Calculated Delivered Lumens = [Delivered Lumen Value] x [CCT Multiplier] x [Reflector Multiplier]																												
CCT	27K	2700K																											
	30K	3000K																											
	35K	3500K																											
	40K	4000K																											
	<table border="1"> <thead> <tr> <th>CCT</th> <th>2200K</th> <th>2700K</th> <th>3000K</th> <th>3500K</th> <th>4000K</th> <th>5000K</th> </tr> </thead> <tbody> <tr> <td>CRI</td> <td>80+</td> <td>90+</td> <td>80+</td> <td>90+</td> <td>80+</td> <td>90+</td> </tr> <tr> <td>CCT MULTIPLIER FOR LUMEN OUTPUT</td> <td>0.85</td> <td>N/A</td> <td>0.96</td> <td>0.81</td> <td>1.00</td> <td>0.84</td> </tr> <tr> <td></td> <td>1.01</td> <td>0.85</td> <td>1.03</td> <td>0.87</td> <td>1.04</td> <td>N/A</td> </tr> </tbody> </table>		CCT	2200K	2700K	3000K	3500K	4000K	5000K	CRI	80+	90+	80+	90+	80+	90+	CCT MULTIPLIER FOR LUMEN OUTPUT	0.85	N/A	0.96	0.81	1.00	0.84		1.01	0.85	1.03	0.87	1.04
CCT	2200K	2700K	3000K	3500K	4000K	5000K																							
CRI	80+	90+	80+	90+	80+	90+																							
CCT MULTIPLIER FOR LUMEN OUTPUT	0.85	N/A	0.96	0.81	1.00	0.84																							
	1.01	0.85	1.03	0.87	1.04	N/A																							
CRI	80	80 CRI																											
	90	90 CRI																											
OPTIC & LM MULTIPLIER SEE PAGE 2	WW	wall wash																											
TRIM COLOR	BK	black																											
	WH	white																											
	MC	matte chrome																											
Antimicrobial finish, add AM to black, white or matte chrome i.e. BKAM.																													
Includes shatter proof lens and tamper resistant screws.																													
BEZEL COLOR	BK	black (0.98)																											
	WH	white (1.00)																											
	MC	matte chrome (0.99)																											
Antimicrobial finish, add AM to black, white or matte chrome i.e. BKAM.																													

WW BEAM ORDERING CODE		
MOUNTING OPTIONS SEE PAGE 3, 4	NC	new construction with ceiling fitting plate
VOLTAGE	120	120V
	UNV	120V-277V
DIMMING	DIM10	eldoLED flicker free 0-10V dimming to 1%
	DIM10Z	eldoLED flicker free 0-10V dimming to 0%
	DALI	eldoLED flicker free DALI 2 dimming to 1%
	DALIZ	eldoLED flicker free DALI 2 dimming to 0%
	DMXZ	DMX dim to zero
	LUT	Lutron Hi-lume Ecosystem dimming to 1%, Soft-on & Fade-to-Black
	LUTP ²	Lutron Hi-lume Premier Ecosystem dimming to 0.1%, Soft-on & Fade-to-Black
ELECTRICAL OPTIONS	ELV1 ^{1,3}	leading & trailing edge (Triac/ELV) dimming to 1%
	NLT	nLight control interface: standard Cat-5/RJ45 connection (female), dim to off
	CAS	Casambi Bluetooth control with flicker free 1% dimming
ELECTRICAL OPTIONS	EM7	emergency battery backup, 90 minutes at 7W to LED
	EM12	emergency battery backup, 90 minutes at 12W to LED
	EM10CA20	remote emergency battery backup, 90 minutes at 10W to LED, CA title 20

ADDITIONAL MOUNTING INFO	
New Construction Bar Hangers (included)	Mounting Length: 14-3/4" to 26"
Extension Kit p/n: K20266 (ordered separately, 1 per fixture)	Extends a pair of Bar Hangers Total Mounting Length: 29" to 48"

YOUR COMPLETED ORDERING CODE
Follow the steps to specify your fixture, example:
NU6 - RWTR - SW - 30LM - 35K - 90 - WW - WH - NC - UNV - DIM10

NOTES

- LUTP not available in 25LM/30LM/40LM.
- ELV1 (120V) not available in 10LM.

* EldoLED driver uses logarithmic dimming curve as standard. For linear dimming curve add "LIN" after dimming code, i.e. DIM10LIN.

TRIM OPTIONS

TRIM COLORS



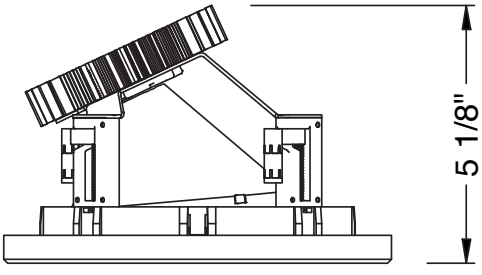
alphabet

PROJECT INFORMATION		
JOB NAME	TYPE	
ORDERING CODE		

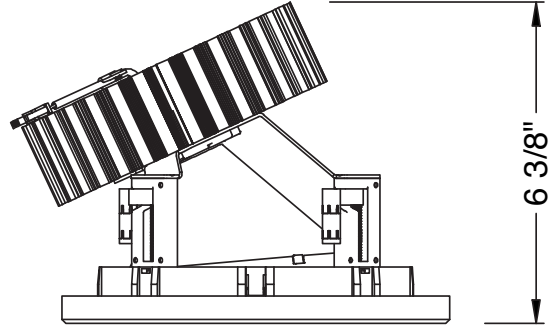
MOUNTING OPTIONS

FIXTURE HEIGHT

10LM - 30LM CONFIGURATION

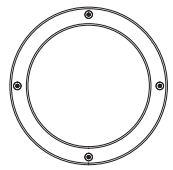
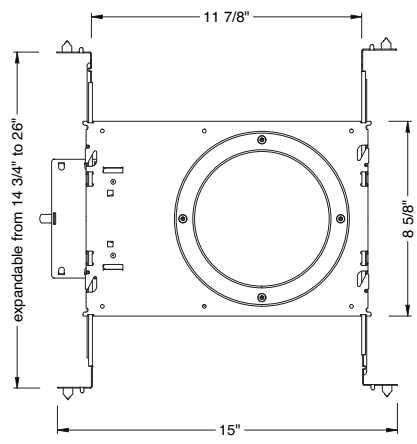
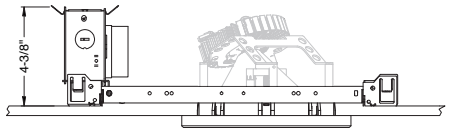


40LM CONFIGURATION

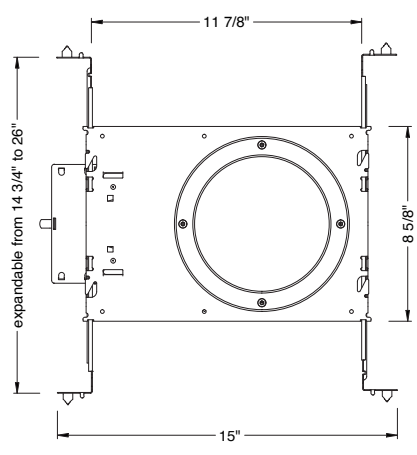
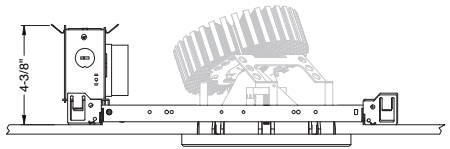
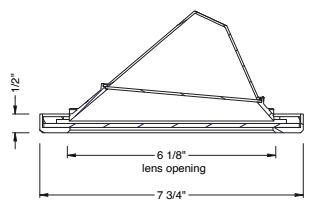


NC - NEW CONSTRUCTION

TAMPER RESISTANT



ceiling cutout
6-3/8" diameter
ceiling thickness
1/8" to 1-5/8"



PROJECT INFORMATION			
JOB NAME		TYPE	
ORDERING CODE			

BATTERY OPTIONS

EMERGENCY BATTERY

IOTA's ILB Battery Backups are UL Listed LED emergency drivers that allow the same LED fixture to be used for both normal and emergency operation. In the event of a power failure, the ILB switches to the emergency mode and operates the existing fixture for 90 minutes. The unit contains a battery, charger, and converter circuit in a single can. The Constant Power design of the ILB maintains the output wattage to the LED array even as the system voltage diminishes. UL 924 Listed for U.S. and Canada. UL 1310 Certified, Output Class 2 Compliant. Includes single-piece TBTS test switch and charge indicator accessory kit. For use with switched and unswitched electric fixtures, and includes Two-wire universal AC input. Meets or exceeds all National Electric Code and Life Safety Code Emergency Lighting Requirements. Rated for use in Plenum, Damp Location, Recessed Type IC, and Enclosed and Gasketed Luminares.

REMOTE TEST SWITCH

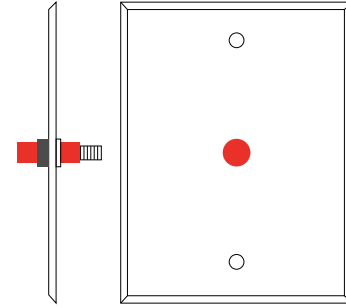
The Remote Test Switch may be mounted adjacent to the LED Fixture by others.

EMERGENCY BATTERY ACCESS

Above ceiling access is recommended for ease of service, but LED Fixture Sizes of 4" and Larger are capable of below ceiling access.

REMOTE LOCATION

Maximum remote mounting distance of the emergency driver shall be 50 feet. Remote location wiring provided by others. Follow all Local and National Electric/Building Codes.



Remote Test Switch

EM MODE OUTPUT (DELIVERED LUMENS)			
LUMEN ORDERING CODE	EM7	EM10	EM12
ALL OPTIONS (10LM TO 40LM)	634LM	880LM	990LM
Notes: Based on 30K, 80CRI			

NC - NEW CONSTRUCTION WITH EM BATTERY (REMOTE TEST SWITCH)

