

PROJECT INFORMATION		
JOB NAME		TYPE
ORDERING CODE		

NU4

4" Round Wall Wash Tamper Resistant Standard White



WW BEAM		
(Note: Specifications are subject to change without notice)		
14mm COB PERFORMANCE DATA		
LED LIGHT ENGINE	NOMINAL DELIVERED LUMENS	SYSTEM WATTAGE
10LM	670LM @30K/80CRI	8W
15LM	1000LM @30K/80CRI	12W
20LM	1310LM @30K/80CRI	16W
25LM	1600LM @30K/80CRI	20W
30LM	2025LM @30K/80CRI	26W
35LM	2250LM @30K/80CRI	27W
40LM	2550LM @30K/80CRI	32W
10LM	560LM @30K/90/CRI	8W
15LM	830LM @30K/90/CRI	12W
20LM	1100LM @30K/90/CRI	16W
25LM	1370LM @30K/90/CRI	20W
30LM	1700LM @30K/90/CRI	26W
35LM	1900LM @30K/90/CRI	27W
40LM	2180M @30K/90/CRI	32W
Notes	Delivered lumens based on WW optic with no lens, (see page 2)	



FEATURES

- Designed to meet NYS-OMH rigorous requirements
- Spun aluminum frame with stainless steel tamper resistant screws
- Polycarbonate (3mm) shatter proof lensing
- UGR <18
- Microban® antimicrobial finish available on all exposed painted surfaces

DIMMING AND CONTROLS

- eldoLED flicker free 0-10V dimming to 0% and 1%
- eldoLED flicker free DALI dimming to 0% and 1%
- DMX dim to zero
- Lutron Hi-lumen 2-Wire (Eco System) dimming to 0.1% and 1%
- Leading & trailing edge (Triac/ELV) dimming to 1%
- Casambi bluetooth dimming to 1.0%
- nLight control interface dimming to 0%

CONSTRUCTION

- Aluminum 6061 lensing frame
- 18-8 stainless steel tamper resistant screws
- Shatter resistant Polycarbonate (PC) lensing
- Electrocoated 16-gauge cold rolled steel construction
- Accommodates ceiling thickness from 1/8" to 1-5/8"

LED

- 90 CRI: SDCM = 2-step MacAdam Ellipse, Lumen Maintenance: L₇₀ > 66,000 hrs
- 80 CRI: SDCM = 2-step MacAdam Ellipse, Lumen Maintenance: L₇₀ > 66,000 hrs

LISTING

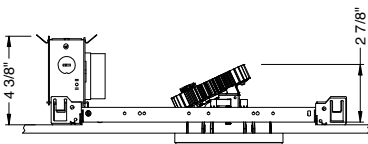
- ULus Listed to UL1598 & UL2108; cUL Listed to CSA C22.2 #250.0
- IP65 with lens - Suitable for wet locations
- Non-conductive, dead-front construction (shower approved)
- NSF/ANSI-2 with lens (Non-Food and Splash Zones)
- NYSOMH - New York State Office of Mental Health compliant
- 5 Year Limited warranty

ELECTRICAL

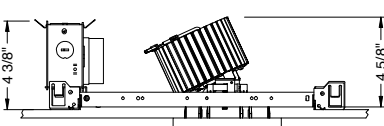
- 120V-277V, 120 only Triac / ELV
- Power factory ≥ 0.9
- 2kV driver input surge protection
- Remote emergency test switch
- 7W, 10W (T20 CEC) and 12W EM 90min battery
- Max. ambient installation temperature 95°F (35°C)

FIXTURE HEIGHT

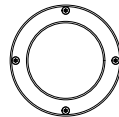
10LM - 30LM LOW LUMENS



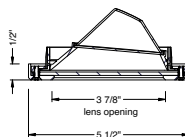
40LM HIGH LUMENS



TAMPER RESISTANT



ceiling cutout
4-3/8 diameter
ceiling thickness
1/8" to 1-5/8"



alphabet

PROJECT INFORMATION		
JOB NAME		TYPE
ORDERING CODE		

WW BEAM ORDERING CODE																					
SERIES	NU4	NU4																			
TYPE	RWTR	round wall wash tamper resistant																			
LED	SW	standard white																			
DELIVERED LUMENS	10LM	670 lm																			
	15LM	1000 lm																			
	20LM	1310 lm																			
	25LM	1600 lm																			
	30LM	2025 lm																			
	35LM	2250 lm																			
	40LM	2550 lm																			
Standard Configuration: 3000K 80CRI WW Calculated Delivered Lumens = [Delivered Lumen Value] x [CCT Multiplier] x [Reflector Multiplier]																					
CCT	27K	2700K																			
	30K	3000K																			
	35K	3500K																			
	40K	4000K																			
	<table border="1"> <thead> <tr> <th>CCT</th> <th>2700K</th> <th>3000K</th> <th>3500K</th> <th>4000K</th> </tr> <tr> <th>CRI</th> <td>80+</td> <td>90+</td> <td>80+</td> <td>90+</td> </tr> <tr> <th>CCT MULTIPLIER FOR LUMEN OUTPUT</th> <td>0.96</td> <td>0.81</td> <td>1.00</td> <td>0.85</td> </tr> <tr> <td></td> <td>1.03</td> <td>0.88</td> <td>1.06</td> <td>0.91</td> </tr> </thead> </table>		CCT	2700K	3000K	3500K	4000K	CRI	80+	90+	80+	90+	CCT MULTIPLIER FOR LUMEN OUTPUT	0.96	0.81	1.00	0.85		1.03	0.88	1.06
CCT	2700K	3000K	3500K	4000K																	
CRI	80+	90+	80+	90+																	
CCT MULTIPLIER FOR LUMEN OUTPUT	0.96	0.81	1.00	0.85																	
	1.03	0.88	1.06	0.91																	
CRI	80	80 CRI																			
	90	90 CRI																			
OPTIC & LM MULTIPLIER SEE PAGE 3	WW	wall wash																			
TRIM COLOR SEE PAGE 3	BK	black																			
	WH	white																			
	MC	matte chrome																			
	CC	custom color, consult factory for details																			
Antimicrobial finish, add AM to black, white or matte chrome i.e. BKAM.																					
Includes shatter proof lens and tamper resistant screws.																					
BEZEL COLOR SEE PAGE 3	BK	black	(0.98)																		
	WH	white	(1.00)																		
	MC	matte chrome	(0.99)																		
	CC	custom color, consult factory for details																			
Antimicrobial finish, add AM to black, white or matte chrome i.e. BKAM.																					

WW BEAM ORDERING CODE		
MOUNTING OPTIONS SEE PAGE 6	NC	new construction with ceiling fitting plate
VOLTAGE	120	120V
	UNV	120V-277V
DIMMING	DIM10	eldoLED flicker free 0-10V dimming to 1%
	DIM10Z	eldoLED flicker free 0-10V dimming to 0%
	DALI	eldoLED flicker free DALI 2 dimming to 1%
	DALIZ	eldoLED flicker free DALI 2 dimming to 0%
	DMXZ	DMX dim to zero
	DMX-RJ45	DMX control dimming to 0.1% with RJ45 connection
	DMX-XLR	DMX control dimming to 0.1% with XLR 5pin connection
	DMX-WL	DMX control dimming to 0.1% with wire lead connection
	LUT	Lutron Hi-lume Ecosystem dimming to 1%, Soft-on & Fade-to-Black
	LUTP ¹	Lutron Hi-lume Premier Ecosystem dimming to 0.1%, Soft-on & Fade-to-Black
ELV1 ²	leading & trailing edge (Triac/ELV) dimming to 1%	
NLT	nLight control interface: standard Cat-5/RJ45 connection (female), dim to off	
CAS	Casambi Bluetooth control with flicker free 1% dimming	
ELECTRICAL OPTIONS	EM7	emergency battery backup, 90 minutes at 7W to LED
	EM12	emergency battery backup, 90 minutes at 12W to LED
	EM10CA20	remote emergency battery backup, 90 minutes at 10W to LED, CA title 20

ADDITIONAL MOUNTING INFO	
New Construction Bar Hangers (included)	Mounting Length: 14-3/4" to 26"
Extension Kit p/n: K20266 (ordered separately, 1 per fixture)	Extends a pair of Bar Hangers Total Mounting Length: 29" to 48"

YOUR COMPLETED ORDERING CODE
Follow the steps to specify your fixture, example:
NU4 - RWTR - SW - 20LM - 35K - 90 - WW - WH - NC - UNV - DIM10 - EM7

NOTES

- LUTP not available in 25LM/30LM/40LM.
- ELV1 (120V) not available in 10LM.

* EldoLED and DMX uses logarithmic dimming curve as standard. For linear dimming curve, add "LIN" after dimming code, i.e. DIM10LIN.

alphabet

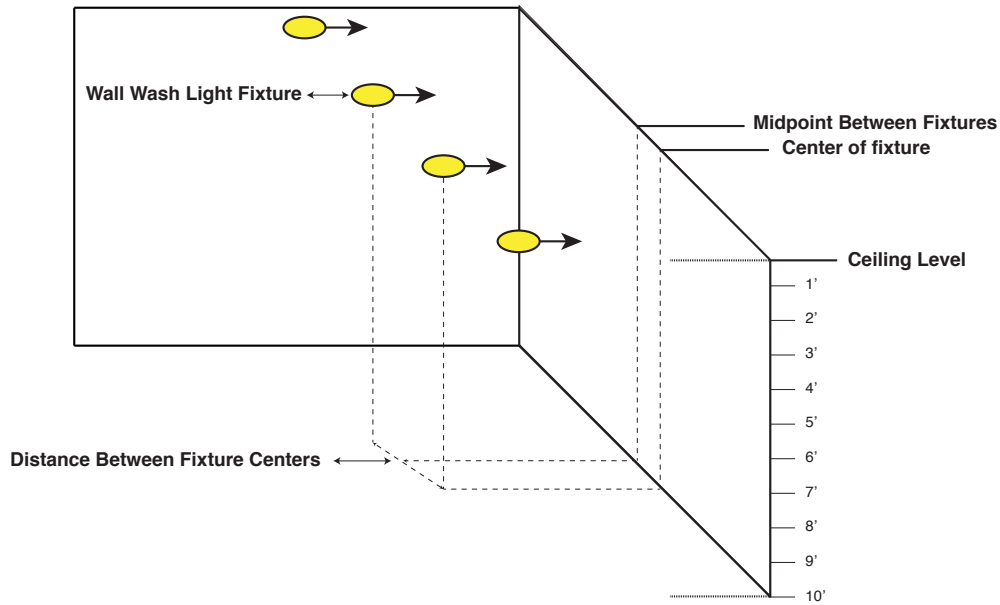
PROJECT INFORMATION			
JOB NAME		TYPE	
ORDERING CODE			

TRIM OPTIONS

TRIM COLORS



PHOTOMETRIC DATA DIAGRAM



PHOTOMETRIC DATA CHARTS

FOOT CANDLE MEASUREMENT

STANDARD WHITE WALL WASH 40LM, 80CRI, 3000K																		
MOUNTING DISTANCE	2' FROM WALL						3' FROM WALL						4' FROM WALL					
	2' ON CENTER		3' ON CENTER		4' ON CENTER		2' ON CENTER		3' ON CENTER		4' ON CENTER		3' ON CENTER		4' ON CENTER		6' ON CENTER	
FIXTURE SPACING																		
DISTANCE FROM CEILING	CENTER	MID POINT	CENTER	MID POINT	CENTER	MID POINT	CENTER	MID POINT	CENTER	MID POINT	CENTER	MID POINT	CENTER	MID POINT	CENTER	MID POINT	CENTER	MID POINT
1'	68.3	71.2	54.4	38.8	50.8	19.2	17.7	18.2	13	12.6	10.7	8.9	6.6	6.6	5.3	5	4.1	3
2'	193.3	196.3	130.4	132.2	108.7	90.5	87	91.7	60.7	62.4	46.8	45.5	22.1	23.2	17.1	17.8	13.6	9.7
3'	149.9	152.3	104.4	108.9	81.4	81.7	116.6	122.7	85.9	87.2	64.4	66.6	52.5	54.8	40.8	41.8	28.5	26.6
4'	96.2	97.7	70.7	73.6	54.8	57.7	97.3	101.9	75.4	76.6	57.8	59.9	60.5	62.9	48.3	49.1	32.6	33.1
5'	60.5	61.7	47.2	48.7	37.3	39.2	71.5	74.5	57.9	58.8	45.6	47.2	54.4	56.6	44.6	45.4	30.5	31.5
6'	39.2	40	32	33	26.1	27.1	50.9	52.8	42.7	43.4	34.7	35.7	44.6	46.2	37.5	38.1	26.1	27.2
7'	26.3	26.8	22.3	23	18.7	19.3	36.2	37.3	31.3	31.9	26.2	26.9	35.2	36.4	30.3	30.7	21.6	22.6
8'	18.3	18.6	16	16.5	13.7	14.2	26.2	26.8	23.2	23.7	19.9	20.4	27.4	28.3	24	24.4	17.7	18.4
9'	13.2	13.3	11.7	12.1	10.3	10.7	19.3	19.7	17.4	17.8	15.2	15.7	21.4	22	19	19.4	14.4	14.9
10'	9.7	9.8	8.9	9.1	7.9	8.2	14.5	14.7	13.3	13.5	11.8	12.2	16.7	17.2	15.1	15.4	11.8	12.2

NOTE

1. Performance based on typical reflectance values and room dimensions. IES files available at ledbrands.com

PROJECT INFORMATION		
JOB NAME		TYPE
ORDERING CODE		

PHOTOMETRIC DATA CHARTS

FOOT CANDLE MEASUREMENT

STANDARD WHITE WALL WASH35LM, 80CRI, 3000K																		
MOUNTING DISTANCE	2' FROM WALL						3' FROM WALL						4' FROM WALL					
FIXTURE SPACING	2' ON CENTER		3' ON CENTER		4' ON CENTER		2' ON CENTER		3' ON CENTER		4' ON CENTER		3' ON CENTER		4' ON CENTER		6' ON CENTER	
DISTANCE FROM CEILING	CENTER	MID POINT	CENTER	MID POINT	CENTER	MID POINT	CENTER	MID POINT	CENTER	MID POINT	CENTER	MID POINT	CENTER	MID POINT	CENTER	MID POINT	CENTER	MID POINT
1'	59.5	62	47.4	33.8	44.3	16.7	15.4	15.9	11.3	11	9.3	7.7	5.7	5.7	4.6	4.4	3.6	2.6
2'	168.4	171	113.6	115.2	94.7	78.8	75.8	79.8	52.8	54.4	40.8	39.7	19.3	20.2	14.9	15.5	11.8	8.5
3'	130.6	132.7	90.9	94.8	70.9	71.2	101.6	106.9	74.8	76	56.1	58	45.7	47.7	35.5	36.4	24.8	23.1
4'	83.8	85.1	61.6	64.1	47.8	50.3	84.8	88.7	65.7	66.8	50.4	52.1	52.7	54.8	42.1	42.7	28.4	28.8
5'	52.7	53.8	41.1	42.4	32.5	34.1	62.3	64.9	50.5	51.2	39.7	41.1	47.4	49.3	38.9	39.5	26.5	27.4
6'	34.1	34.8	27.9	28.7	22.7	23.6	44.3	46	37.2	37.8	30.2	31.1	38.9	40.3	32.6	33.2	22.7	23.7
7'	22.9	23.3	19.4	20.1	16.3	16.8	31.6	32.5	27.3	27.8	22.8	23.4	30.7	31.7	26.4	26.7	18.8	19.7
8'	16	16.2	13.9	14.4	12	12.4	22.8	23.4	20.2	20.6	17.3	17.8	23.9	24.7	20.9	21.3	15.4	16
9'	11.5	11.6	10.2	10.5	9	9.3	16.8	17.1	15.2	15.5	13.3	13.6	18.6	19.2	16.6	16.9	12.6	13
10'	8.5	8.6	7.7	7.9	6.9	7.1	12.6	12.8	11.6	11.8	10.3	10.6	14.6	15	13.2	13.4	10.3	10.6

STANDARD WHITE WALL WASH 30LM, 80CRI, 3000K																		
MOUNTING DISTANCE	2' FROM WALL						3' FROM WALL						4' FROM WALL					
FIXTURE SPACING	2' ON CENTER		3' ON CENTER		4' ON CENTER		2' ON CENTER		3' ON CENTER		4' ON CENTER		3' ON CENTER		4' ON CENTER		6' ON CENTER	
DISTANCE FROM CEILING	CENTER	MID POINT	CENTER	MID POINT	CENTER	MID POINT	CENTER	MID POINT	CENTER	MID POINT	CENTER	MID POINT	CENTER	MID POINT	CENTER	MID POINT	CENTER	MID POINT
1'	53.6	55.8	42.7	30.4	39.9	15.1	13.9	14.3	10.2	9.9	8.4	6.9	5.2	5.2	4.2	3.9	3.2	2.4
2'	151.5	153.9	102.2	103.7	85.2	71	68.2	71.9	47.6	49	36.7	35.7	17.4	18.2	13.4	13.9	10.7	7.6
3'	117.5	119.4	81.9	85.3	63.8	64.1	91.4	96.2	67.3	68.4	50.5	52.2	41.1	42.9	32	32.7	22.3	20.8
4'	75.4	76.6	55.4	57.7	43	45.2	76.3	79.9	59.1	60.1	45.3	46.9	47.4	49.3	37.9	38.5	25.6	25.9
5'	47.5	48.4	37	38.2	29.2	30.7	56.1	58.4	45.4	46.1	35.8	37	42.7	44.4	35	35.6	23.9	24.7
6'	30.7	31.3	25.1	25.9	20.5	21.3	39.9	41.4	33.5	34	27.2	28	35	36.2	29.4	29.9	20.5	21.3
7'	20.6	21	17.5	18	14.7	15.2	28.4	29.3	24.6	25	20.5	21.1	27.6	28.5	23.7	24.1	16.9	17.7
8'	14.4	14.6	12.5	12.9	10.8	11.1	20.5	21	18.2	18.5	15.6	16	21.5	22.2	18.9	19.2	13.9	14.4
9'	10.3	10.4	9.2	9.5	8.1	8.4	15.1	15.4	13.7	13.9	11.9	12.3	16.7	17.3	14.9	15.2	11.3	11.7
10'	7.6	7.7	6.9	7.1	6.2	6.4	11.3	11.5	10.4	10.6	9.3	9.6	13.1	13.5	11.9	12.1	9.2	9.5

STANDARD WHITE WALL WASH 25LM, 80CRI, 3000K																		
MOUNTING DISTANCE	2' FROM WALL						3' FROM WALL						4' FROM WALL					
FIXTURE SPACING	2' ON CENTER		3' ON CENTER		4' ON CENTER		2' ON CENTER		3' ON CENTER		4' ON CENTER		3' ON CENTER		4' ON CENTER		6' ON CENTER	
DISTANCE FROM CEILING	CENTER	MID POINT	CENTER	MID POINT	CENTER	MID POINT	CENTER	MID POINT	CENTER	MID POINT	CENTER	MID POINT	CENTER	MID POINT	CENTER	MID POINT	CENTER	MID POINT
1'	43.3	45.1	34.5	24.6	32.2	12.2	11.2	11.6	8.2	8	6.8	5.6	4.2	4.2	3.4	3.2	2.6	1.9
2'	122.6	124.5	82.7	83.9	68.9	57.4	55.2	58.1	38.5	39.6	29.7	28.9	14	14.7	10.8	11.3	8.6	6.2
3'	95.1	96.6	66.2	69	51.6	51.8	74	77.8	54.5	55.3	40.8	42.2	33.3	34.7	25.8	26.5	18	16.8
4'	61	62	44.8	46.6	34.8	36.6	61.7	64.6	47.8	48.6	36.7	38	38.4	39.9	30.6	31.1	20.7	21
5'	38.4	39.2	29.9	30.9	23.7	24.8	45.4	47.3	36.7	37.3	28.9	30	34.5	35.9	28.3	28.8	19.3	20
6'	24.9	25.3	20.3	20.9	16.5	17.2	32.3	33.5	27.1	27.5	22	22.7	28.3	29.3	23.8	24.1	16.6	17.3
7'	16.7	17	14.1	14.6	11.9	12.3	23	23.7	19.9	20.2	16.6	17.1	22.3	23.1	19.2	19.5	13.7	14.3
8'	11.6	11.8	10.1	10.5	8.7	9	16.6	17	14.7	15	12.6	12.9	17.4	18	15.2	15.5	11.2	11.7
9'	8.3	8.4	7.5	7.7	6.5	6.8	12.2	12.5	11	11.3	9.7	9.9	13.5	14	12.1	12.3	9.1	9.5
10'	6.2	6.2	5.6	5.8	5	5.2	9.2	9.3	8.4	8.6	7.5	7.7	10.6	10.9	9.6	9.8	7.5	7.7

NOTE

1. Performance based on typical reflectance values and room dimensions. IES files available at ledrabrands.com

PROJECT INFORMATION			
JOB NAME		TYPE	
ORDERING CODE			

PHOTOMETRIC DATA CHARTS

FOOT CANDLE MEASUREMENT

STANDARD WHITE WALL WASH 20LM, 80CRI, 3000K																		
MOUNTING DISTANCE	2' FROM WALL						3' FROM WALL						4' FROM WALL					
FIXTURE SPACING	2' ON CENTER		3' ON CENTER		4' ON CENTER		2' ON CENTER		3' ON CENTER		4' ON CENTER		3' ON CENTER		4' ON CENTER		6' ON CENTER	
DISTANCE FROM CEILING	CENTER	MID POINT	CENTER	MID POINT	CENTER	MID POINT	CENTER	MID POINT	CENTER	MID POINT	CENTER	MID POINT	CENTER	MID POINT	CENTER	MID POINT	CENTER	MID POINT
1'	34.7	36.2	27.7	19.8	25.9	9.8	9	9.3	6.6	6.4	5.4	4.5	3.4	3.4	2.7	2.6	2.1	1.5
2'	98.3	99.8	66.3	67.3	55.3	46	44.3	46.6	30.9	31.8	23.8	23.2	11.3	11.8	8.7	9.1	6.9	4.9
3'	76.3	77.5	53.1	55.4	41.4	41.6	59.3	62.4	43.7	44.4	32.8	33.9	26.7	27.9	20.7	21.2	14.5	13.5
4'	48.9	49.7	36	37.4	27.9	29.4	49.5	51.8	38.4	39	29.4	30.5	30.8	32	24.6	25	16.6	16.8
5'	30.8	31.4	24	24.8	19	19.9	36.4	37.9	29.5	29.9	23.2	24	27.7	28.8	22.7	23.1	15.5	16
6'	19.9	20.3	16.3	16.8	13.3	13.8	25.9	26.8	21.7	22.1	17.7	18.2	22.7	23.5	19.1	19.4	13.3	13.8
7'	13.4	13.6	11.3	11.7	9.5	9.8	18.4	19	15.9	16.2	13.3	13.7	17.9	18.5	15.4	15.6	11	11.5
8'	9.3	9.4	8.1	8.4	7	7.2	13.3	13.6	11.8	12	10.1	10.4	13.9	14.4	12.2	12.4	9	9.4
9'	6.7	6.8	6	6.2	5.2	5.4	9.8	10	8.9	9	7.8	8	10.9	11.2	9.7	9.9	7.3	7.6
10'	4.9	5	4.5	4.6	4	4.2	7.4	7.5	6.8	6.9	6	6.2	8.5	8.8	7.7	7.9	6	6.2

STANDARD WHITE WALL WASH 15LM, 80CRI, 3000K																		
MOUNTING DISTANCE	2' FROM WALL						3' FROM WALL						4' FROM WALL					
FIXTURE SPACING	2' ON CENTER		3' ON CENTER		4' ON CENTER		2' ON CENTER		3' ON CENTER		4' ON CENTER		3' ON CENTER		4' ON CENTER		6' ON CENTER	
DISTANCE FROM CEILING	CENTER	MID POINT	CENTER	MID POINT	CENTER	MID POINT	CENTER	MID POINT	CENTER	MID POINT	CENTER	MID POINT	CENTER	MID POINT	CENTER	MID POINT	CENTER	MID POINT
1'	26.2	27.3	20.9	14.9	19.5	7.4	6.8	7	5	4.8	4.1	3.4	2.5	2.5	2	1.9	1.6	1.2
2'	74.1	75.2	50	50.7	41.7	34.7	33.4	35.1	23.2	23.9	18	17.5	8.5	8.9	6.5	6.8	5.2	3.7
3'	57.5	58.4	40	41.7	31.2	31.3	44.7	47	32.9	33.4	24.7	25.5	20.1	21	15.6	16	10.9	10.2
4'	36.9	37.5	27.1	28.2	21	22.1	37.3	39	28.9	29.4	22.2	22.9	23.2	24.1	18.5	18.8	12.5	12.7
5'	23.2	23.7	18.1	18.7	14.3	15	27.4	28.6	22.2	22.5	17.5	18.1	20.9	21.7	17.1	17.4	11.7	12.1
6'	15	15.3	12.3	12.6	10	10.4	19.5	20.2	16.4	16.6	13.3	13.7	17.1	17.7	14.4	14.6	10	10.4
7'	10.1	10.3	8.5	8.8	7.2	7.4	13.9	14.3	12	12.2	10	10.3	13.5	14	11.6	11.8	8.3	8.6
8'	7	7.1	6.1	6.3	5.3	5.4	10	10.3	8.9	9.1	7.6	7.8	10.5	10.9	9.2	9.4	6.8	7
9'	5	5.1	4.5	4.6	4	4.1	7.4	7.5	6.7	6.8	5.8	6	8.2	8.4	7.3	7.4	5.5	5.7
10'	3.7	3.8	3.4	3.5	3	3.1	5.5	5.6	5.1	5.2	4.5	4.7	6.4	6.6	5.8	5.9	4.5	4.7

STANDARD WHITE WALL WASH 10LM, 80CRI, 3000K																		
MOUNTING DISTANCE	2' FROM WALL						3' FROM WALL						4' FROM WALL					
FIXTURE SPACING	2' ON CENTER		3' ON CENTER		4' ON CENTER		2' ON CENTER		3' ON CENTER		4' ON CENTER		3' ON CENTER		4' ON CENTER		6' ON CENTER	
DISTANCE FROM CEILING	CENTER	MID POINT	CENTER	MID POINT	CENTER	MID POINT	CENTER	MID POINT	CENTER	MID POINT	CENTER	MID POINT	CENTER	MID POINT	CENTER	MID POINT	CENTER	MID POINT
1'	17.9	18.6	14.2	10.1	13.3	5	4.6	4.8	3.4	3.3	2.8	2.3	1.7	1.7	1.4	1.3	1.1	0.8
2'	50.5	51.3	34.1	34.6	28.4	23.7	22.7	24	15.9	16.3	12.2	11.9	5.8	6.1	4.5	4.6	3.6	2.5
3'	39.2	39.8	27.3	28.4	21.3	21.4	30.5	32.1	22.4	22.8	16.8	17.4	13.7	14.3	10.7	10.9	7.4	6.9
4'	25.1	25.5	18.5	19.2	14.3	15.1	25.4	26.6	19.7	20	15.1	15.6	15.8	16.4	12.6	12.8	8.5	8.6
5'	15.8	16.1	12.3	12.7	9.7	10.2	18.7	19.5	15.1	15.4	11.9	12.3	14.2	14.8	11.7	11.9	8	8.2
6'	10.2	10.4	8.4	8.6	6.8	7.1	13.3	13.8	11.2	11.3	9.1	9.3	11.7	12.1	9.8	10	6.8	7.1
7'	6.9	7	5.8	6	4.9	5.1	9.5	9.8	8.2	8.3	6.8	7	9.2	9.5	7.9	8	5.6	5.9
8'	4.8	4.9	4.2	4.3	3.6	3.7	6.8	7	6.1	6.2	5.2	5.3	7.2	7.4	6.3	6.4	4.6	4.8
9'	3.4	3.5	3.1	3.2	2.7	2.8	5	5.1	4.6	4.6	4	4.1	5.6	5.8	5	5.1	3.8	3.9
10'	2.5	2.6	2.3	2.4	2.1	2.1	3.8	3.8	3.5	3.5	3.1	3.2	4.4	4.5	4	4	3.1	3.2

NOTE

1. Performance based on typical reflectance values and room dimensions. IES files available at ledrabrands.com

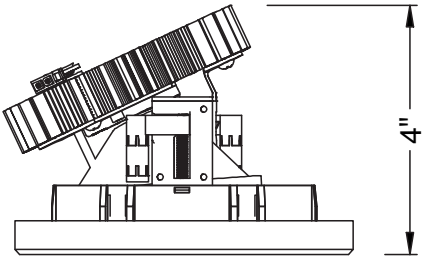
alphabet

PROJECT INFORMATION		
JOB NAME		TYPE
ORDERING CODE		

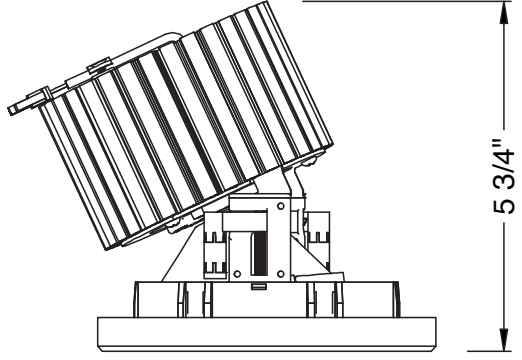
MOUNTING OPTIONS

FIXTURE HEIGHT

10LM - 30LM CONFIGURATIONS

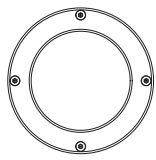
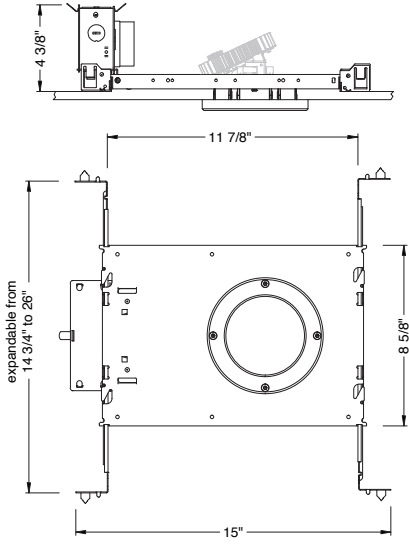


40LM CONFIGURATIONS

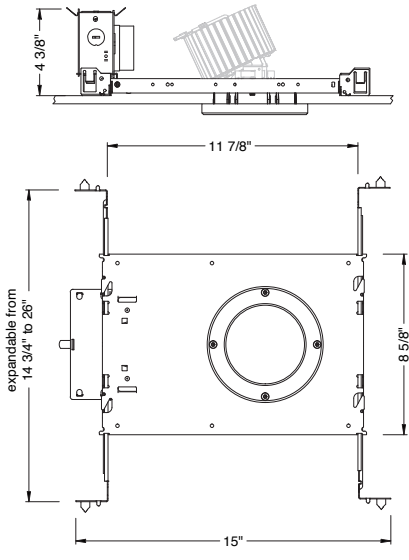
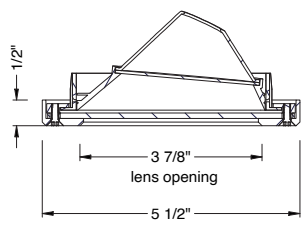


NC - NEW CONSTRUCTION

TAMPER RESISTANT



ceiling cutout
4-3/8 diameter
ceiling thickness
1/8" to 1-5/8"



PROJECT INFORMATION		
JOB NAME		TYPE
ORDERING CODE		

BATTERY OPTIONS

EMERGENCY BATTERY

IOTA's ILB Battery Backups are UL Listed LED emergency drivers that allow the same LED fixture to be used for both normal and emergency operation. In the event of a power failure, the ILB switches to the emergency mode and operates the existing fixture for 90 minutes. The unit contains a battery, charger, and converter circuit in a single can. The Constant Power design of the ILB maintains the output wattage to the LED array even as the system voltage diminishes. UL 924 Listed for U.S. and Canada. UL 1310 Certified, Output Class 2 Compliant. Includes single-piece TBTS test switch and charge indicator accessory kit. For use with switched and unswitched electric fixtures, and includes Two-wire universal AC input. Meets or exceeds all National Electric Code and Life Safety Code Emergency Lighting Requirements. Rated for use in Plenum, Damp Location, Recessed Type IC, and Enclosed and Gasketed Luminares.

REMOTE TEST SWITCH

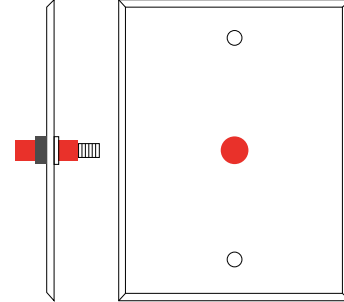
The Remote Test Switch may be mounted adjacent to the LED Fixture by others.

EMERGENCY BATTERY ACCESS

Above ceiling access is required for service. An access panel in the ceiling (or other form of access) adjacent to the installation location of the Emergency Battery is required.

REMOTE LOCATION

Maximum remote mounting distance of the emergency driver shall be 50 feet. Remote location wiring provided by others. Follow all Local and National Electric/Building Codes.



Remote Test Switch

EM MODE OUTPUT (DELIVERED LUMENS)			
LUMEN ORDERING CODE	EM7	EM10	EM12
ALL OPTIONS (10LM TO 40LM)	650LM	910LM	1100LM
Notes: Based on 30K, 80CRI			

NC - NEW CONSTRUCTION WITH EM BATTERY (REMOTE TEST SWITCH)

