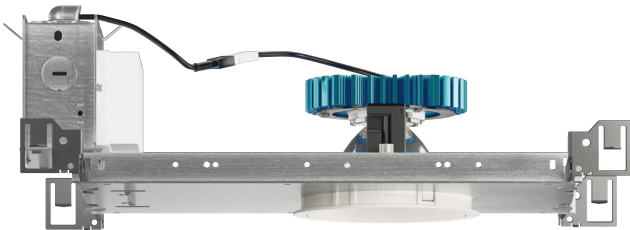
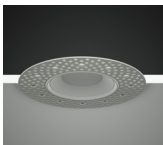


NU4

4" Round Downlight XICATO



Trim



Trimless



Trimless Millwork

FEATURES

- 3/4" bezel regress with 1/16" micro flange
- 12° - 65° optical beam control
- UGR < 19
- Up to 90 LPW
- Glare control, specialty optics, trim options, and custom finishes available
- Microban® antimicrobial finish available on all exposed painted surfaces

LED

- SDCM = 1X2 MacAdam Ellipse, Duv +/- 0.001, Lumen Maintenance: L90 > 55,000 hrs

DIMMING AND CONTROLS

- eldoLED flicker free 0-10V dimming to 0% and 1%
- eldoLED flicker free DALI dimming to 0% and 1%
- DMX dim to zero
- Lutron Hi-lumen 2-Wire (Eco System) dimming to 0.1% and 1%
- Leading & trailing edge (Triac/ELV) dimming to 1%
- Casambi dimming to 1%

LISTING

- ULus Listed to UL1598 & UL2108; cUL Listed to CSA C22.2 #250.0
- IP65 with lens - Suitable for wet locations with lens - Suitable for damp locations without lens
- Non-conductive, dead-front construction (shower approved)
- NSF/ANSI-2 with lens (Non-Food and Splash Zones)
- **Declare.** - LBC Red List Approved
- 5 Year Limited warranty

CONSTRUCTION

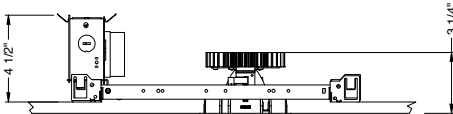
- Lexan™ (PC) highly resistant to impact and heat (240°F)
- Optimal material for wireless signal connectivity
- Shatter proof acrylic bezel lens
- Electrocoated 16-gauge cold-rolled steel construction
- Accommodates ceiling thickness from 1/8" to 1-3/4"

ELECTRICAL

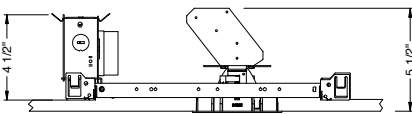
- 120V-277V, 120 only Triac / ELV
- Power factor ≥ 0.9
- 2kV driver input surge protection
- Remote and Integral (ITS) emergency test switch
- 7W, 10W (T20 CEC) and 12W EM 90min battery
- Max. ambient installation temperature 95°F (35°C)

FIXTURE HEIGHT

10LM - 30LM LOW LUMENS



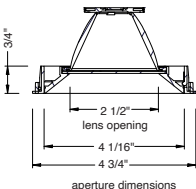
35LM - 40LM HIGH LUMENS



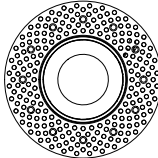
TRIMMED



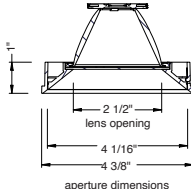
ceiling cutout
4-1/2" diameter
ceiling thickness
1/8" to 1 5/8"



TRIMLESS



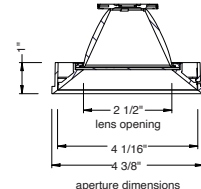
ceiling cutout
4-1/2" diameter
ceiling thickness
1/8" to 1 3/4"



MILLWORK



ceiling cutout
4-3/8" diameter
ceiling thickness
1/2" to 1 3/4"



PROJECT INFORMATION		
JOB NAME		TYPE
ORDERING CODE		

XICATO XTM MODULE - ORDERING CODE		
SERIES	NU4	NU4
TYPE	RD	round downlight
	RDT	round downlight trimless
	RDTMW	round downlight trimless millwork
LED	XTM19	XICATO XTM 19mm
DELIVERED LUMENS	10LM	918 lm
	15LM	1530 lm
	20LM	1730 lm
	25LM	2380 lm
	30LM	2905 lm
	35LM	3540 lm
	40LM	3780 lm
	Standard Configuration: 3000K 80CRI 20D, NL Calculated Delivered Lumens = [Delivered Lumen Value] x [CCT Multiplier]	
CCT	27K	2700K
	30K	3000K
	35K	3500K
	40K	4000K
CRI	83	83 CRI
	98 ^{1,2}	98 CRI
OPTIC & LM MULTIPLIER SEE PAGE 4	12D ³	12 degrees
	20D	20 degrees
	25D	25 degrees
	40D	40 degrees
	65D	65 degrees
BEZEL LENS SEE PAGE 3	NL ⁴	no lens (1.00)
	CL	clear lens (0.98)
	DL	diffused lens (0.91)
	HET	high efficiency textured lens, similar to Solite™ (0.92)
	SBL	smoothing beam lens (0.92)
	E ⁵	elliptical beam spread (0.92)
	HCL ⁶	honeycomb louver (0.85)
Color lenses (amber, blue, green, red) see page 4.		
TRIM COLOR SEE PAGE 3	BK	black
	WH	white
	MC	matte chrome
	BZ	bronze
	WT	wheat
	CC ⁷	custom color, consult factory for details
	Antimicrobial finish, add AM to black, white or matte chrome i.e. BKAM.	
Not applicable to trimless option. Do not include in trimless ordering code.		
BEZEL COLOR SEE PAGE 3	BK	black (0.98)
	WH	white (1.00)
	MC	matte chrome (0.99)
	BZ	bronze (0.98)
	WT	wheat (0.99)
	CC ⁷	custom color, consult factory for details
Antimicrobial finish, add AM to black, white or matte chrome i.e. BKAM.		

XICATO XTM MODULE - ORDERING CODE		
MOUNTING OPTIONS SEE PAGE 7, 8	NC	new construction with ceiling fitting plate
	IC ^{8,9}	insulation contact housing
	ICAT ^{8,9}	insulation contact/airtight housing
	CP ^{8,9}	chicago plenum housing
	RET	retrofit, no ceiling fitting plate
VOLTAGE	I20	120V
	UNV	120V-277V
DIMMING	DIM10	eldoLED flicker free 0-10V dimming to 1%
	DIM10Z	eldoLED flicker free 0-10V dimming to 0%
	DALI	eldoLED flicker free DALI-2 dimming to 1%
	DALIZ	eldoLED flicker free DALI-2 dimming to 0%
	DMX-RJ45	DMX control dimming to 0.1% with RJ45 connection
	DMX-WL	DMX control dimming to 0.1% with wire lead connection
	DMX-XLR	DMX control dimming to 0.1% with XLR 5pin connection
	LUT	Lutron Hi-lume Ecosystem dimming to 1%, Soft-on & Fade-to-Black
	LUTP ¹⁰	Lutron Hi-lume Premier Ecosystem dimming to 0.1%, Soft-on & Fade-to-Black
	ELV1 ¹¹	leading & trailing edge (Triac/ELV) dimming to 1%
ELECTRICAL OPTIONS	CAS	Casambi control with flicker free 1% dimming
	EM7 ¹²	emergency battery backup, 90 minutes at 7W to LED
	EM12 ¹²	emergency battery backup, 90 minutes at 12W to LED
	EM10CA20 ¹²	emergency battery backup, 90 minutes at 10W to LED, CA title 20

ADDITIONAL MOUNTING INFO	
New Construction Bar Hangers (included)	Mounting Length: 14-3/4" to 26"
Extension Kit p/n: K20266 (ordered separately, 1 per fixture)	<i>Extends a pair of Bar Hangers</i> Total Mounting Length: 29" to 48"

YOUR COMPLETED ORDERING CODE
Follow the steps to specify your fixture, example:
NU4 - RD - XTM - 10LM - 30K - 83 - 20D - CL - WH - WH - NC - UNV - DIM10 - EM7

NOTES

1. 98CRI not available in 35LM/40LM.
2. 98CRI not available in 20LM with 12D.
3. 12D available in 10LM/15LM/20LM.
4. NL option does not meet requirements for AT/DF/WET/NSF listings. Lensing cannot be added in the field.
5. Elliptical lens not available with 12D optic options. Actual beam distributions [20D= 35° x 60° , 25D= 40° x 65° , 35D= 45° x 70° , 55D= 55° x 80°]
6. HCL not available with lens.
7. Custom set up fee plus minimum quantity required per color.
8. IC/ICAT/CP not available for 98CRI in 30LM or 80CRI in 40LM.
9. IC/ICAT/CP 12D available in 10LM/15LM
10. LUTP not available in 20LM, 30LM, or 40LM.
11. ELV1 (120V) not available in 10LM.
12. For integrated test switch add "ITS" after emergency backup code, i.e. EM12ITS. Not available in LVL/ND voltage and dimming codes.

* EldoLED and DMX uses logarithmic dimming curve as standard. For linear dimming curve, add "LIN" after dimming code, i.e. DIM10LIN.

alphabet

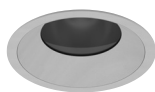
PROJECT INFORMATION			
JOB NAME		TYPE	
ORDERING CODE			

TRIM OPTIONS

TRIM/BEZEL COLORS



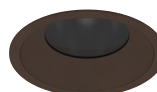
WH



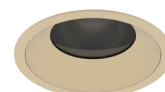
MC



BK



BZ



WT

OPTICAL OPTIONS

- UGR calculation based on CIE 117-1995; room size: 4H X 8H, reflectance: 70/50/20;
- UGR calculation based on 15LM fixtures, unless otherwise noted.

HCL

Honeycomb Louver



OPTIC	BEAM ANGLE	UGR
12D	12	10.5
20D	21	10
25D	23	10.2
40D	33	12.3
55D	49	15.2
65D	56	15.9

NL

No Lens



OPTIC	BEAM ANGLE	UGR
12D	12	14.5
20D	21.7	13.8
25D	24.9	13.6
40D	38	15.5
55D	55.1	17.5
65D	67.8	19.3

CL

Clear Lens



OPTIC	BEAM ANGLE	UGR
12D	12	14.4
20D	22	13.6
25D	25	13.4
40D	38	15.3
55D	55	17.3
65D	68	19.2

DL

Diffused Lens



OPTIC	BEAM ANGLE	UGR
20D	41	19.8
25D	45	20.2
40D	53	21.3
55D	61	21.8
65D	70	23.5

HET

High Efficiency Textured Lens



OPTIC	BEAM ANGLE	UGR
12D	17	13.5
20D	25	14.3
25D	29	14.7
40D	41	16.6
55D	57	17.5
65D	64	20.1

SBL

Smoothing Beam Lens



OPTIC	BEAM ANGLE	UGR
12D	13	13.6
20D	22	13.5
25D	27	13.9
40D	39	15.6
55D	59	16.5
65D	65	19.3

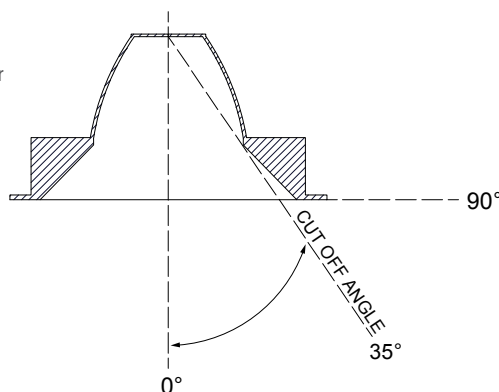
GLARE CONTROL

CUT-OFF ANGLE

Visual comfort is achieved with a lower cut-off angle due to improved glare control. The smaller the cut-off angle, the easier it is on the eye.

Alphabet downlights have been thoughtfully engineered to eliminate glare while still delivering functional illumination.

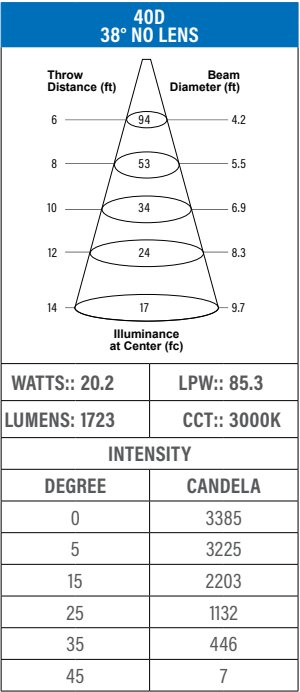
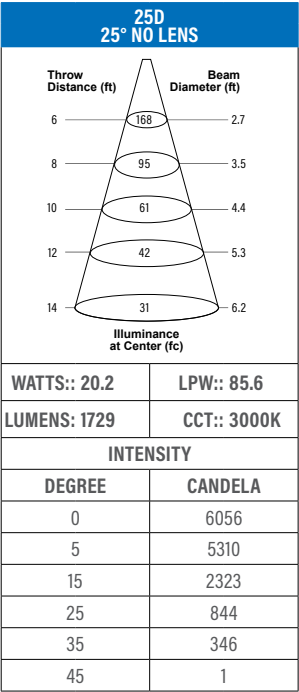
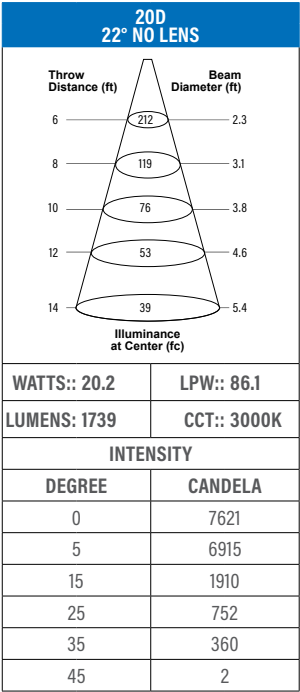
- Cutoff angle of CL is 35 degrees;



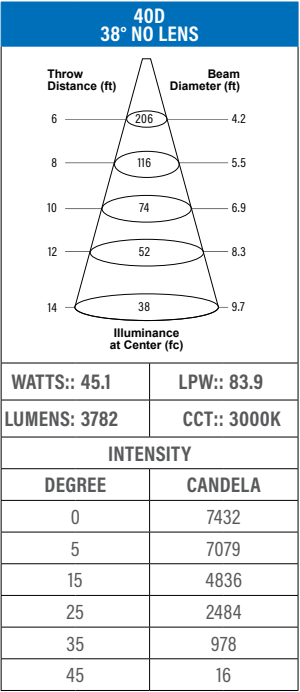
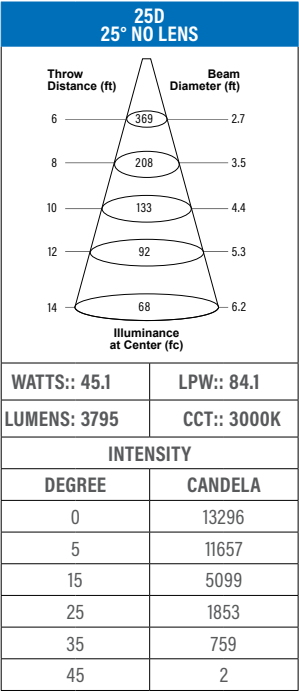
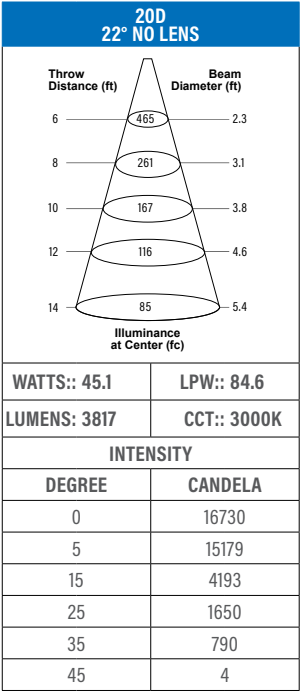
PROJECT INFORMATION			
JOB NAME		TYPE	
ORDERING CODE			

PHOTOMETRIC DATA

20LM



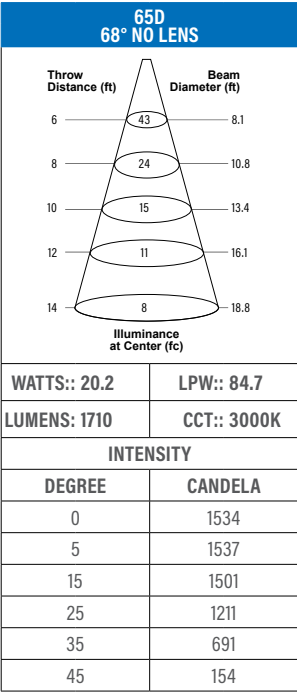
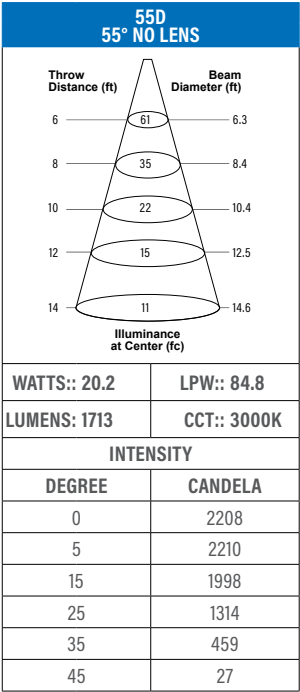
40LM



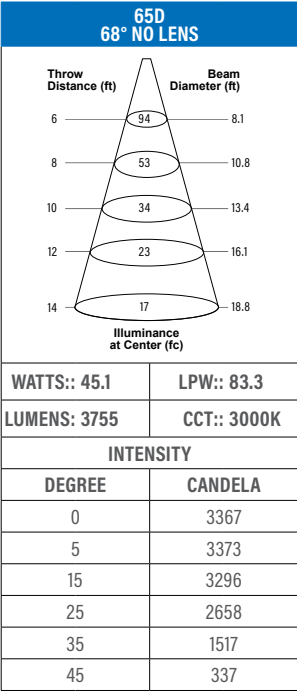
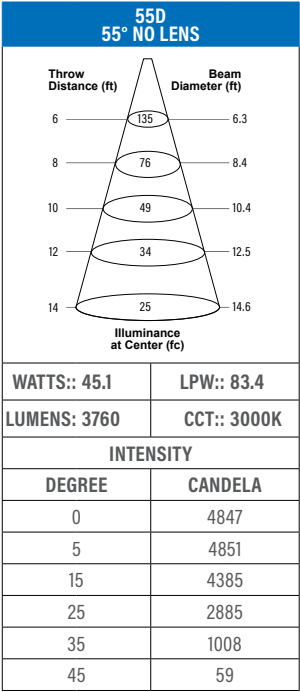
PROJECT INFORMATION			
JOB NAME		TYPE	
ORDERING CODE			

PHOTOMETRIC DATA

20LM



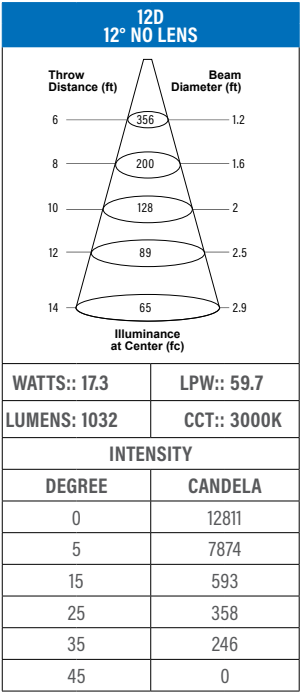
40LM



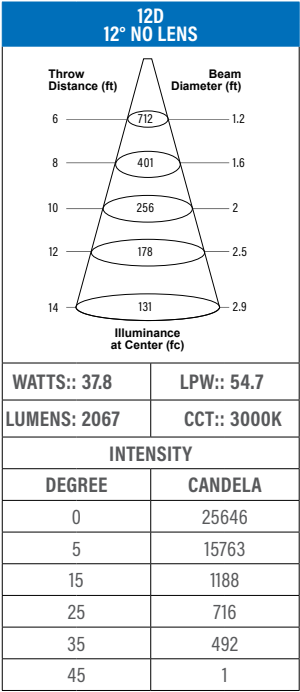
PROJECT INFORMATION			
JOB NAME		TYPE	
ORDERING CODE			

PHOTOMETRIC DATA

10LM



20LM

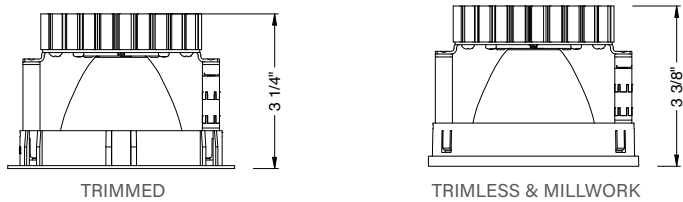


PROJECT INFORMATION			
JOB NAME		TYPE	
ORDERING CODE			

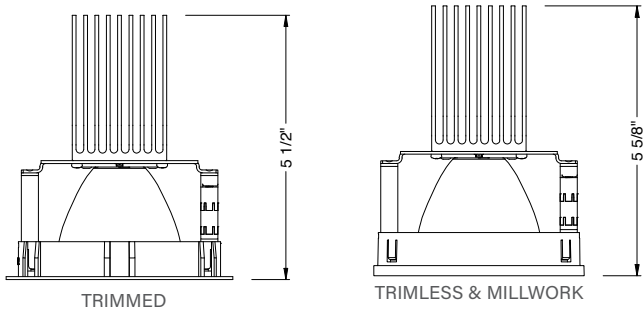
MOUNTING OPTIONS

FIXTURE HEIGHT

10LM - 30LM LOW LUMENS

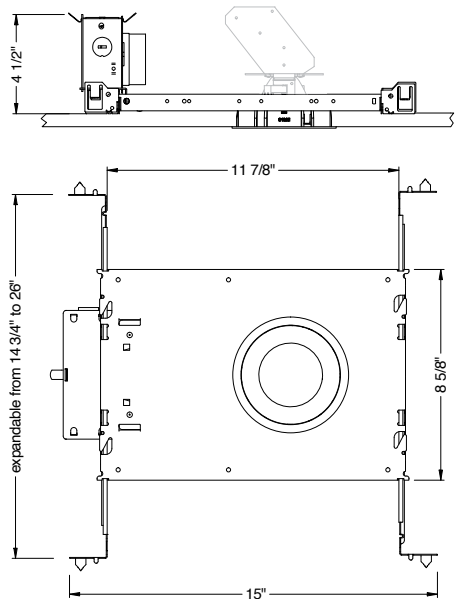


35LM - 40LM HIGH LUMENS

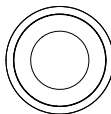


NC - NEW CONSTRUCTION

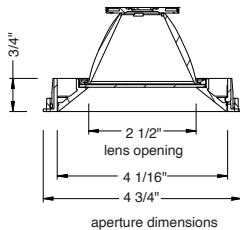
TRIM



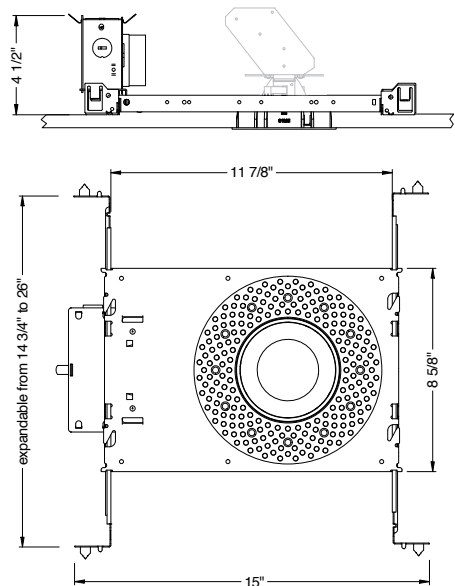
TRIM



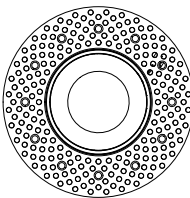
ceiling cutout
4-1/2" diameter
ceiling thickness
1/8" to 1 5/8"



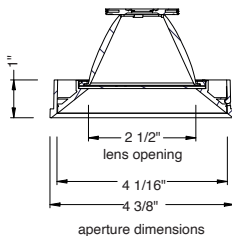
TRIMLESS



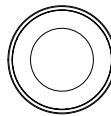
TRIMLESS



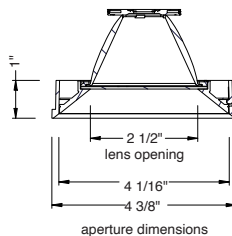
ceiling cutout
4-1/2" diameter
ceiling thickness
1/8" to 1 3/4"



TRIMLESS/MILLWORK



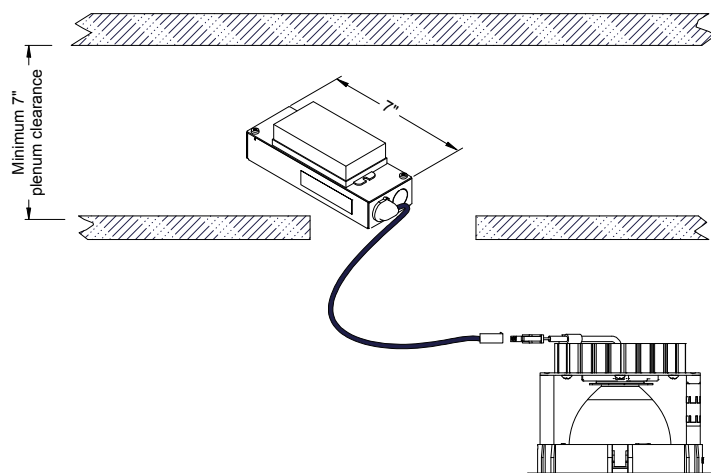
ceiling cutout
4-3/8" diameter
ceiling thickness
1/2" to 1 3/4"



PROJECT INFORMATION			
JOB NAME		TYPE	
ORDERING CODE			

MOUNTING OPTIONS

RET - RETRO TRIM/TRIMLESS



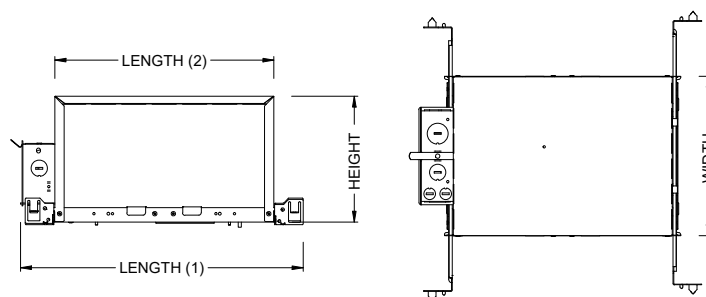
RATINGS / CERTIFICATIONS	NC	RET	IC	ICAT	CP
TYPE NON-IC	✓	✓			
TYPE IC			✓	✓	✓
CHICAGO PLENUM (CCEA)					✓
SUITABLE FOR AIR HANDLING PLENUMS	✓	✓	✓	✓	✓
REDUCED AIRFLOW (WITH LENS) ASTM E283	✓	✓	✓	✓	✓

CEILING THICKNESS	
FIXTURE TYPE	MOUNTING TYPE
	NC, IC, ICAT, CP, RET
	STANDARD CEILING THICKNESS
TRIM	1/8" to 1-5/8"
TRIMLESS	3/8" to 1-3/4"
MILLWORK (TRIMLESS)	1/2" to 1-3/4"

IC - INSULATION CONTACT HOUSING

ICAT - INSULATION CONTACT / AIR TIGHT

CP - CHICAGO PLENUM



BOX SIZE	L1	L2	W	H
A	15 - 7/16"	11 - 3/4"	8 - 1/2"	6 - 3/4"
B	16 - 7/16"	12 - 3/4"	9 - 1/2"	11 - 3/4"

BOX TYPE / LUMEN OUTPUT - NARROW BEAM (20°-65°)						
LUMEN OUTPUT	BOX-A			BOX-B		
	CP	IC	ICAT	CP	IC	ICAT
10LM	✓	✓	✓			
15LM	✓	✓	✓			
20LM	✓	✓	✓			
25LM	✓	✓	✓			
30LM						
35LM				✓	✓	✓
40LM						

BOX TYPE / LUMEN OUTPUT - NARROW BEAM (12°)			
LUMEN OUTPUT	BOX-A		
	CP	IC	ICAT
10LM	✓	✓	✓
15LM	✓	✓	✓

PROJECT INFORMATION			
JOB NAME		TYPE	
ORDERING CODE			

BATTERY OPTIONS

EMERGENCY BATTERY

IOTA's ILB Battery Backups are UL Listed LED emergency drivers that allow the same LED fixture to be used for both normal and emergency operation. In the event of a power failure, the ILB switches to the emergency mode and operates the existing fixture for 90 minutes. The unit contains a battery, charger, and converter circuit in a single can. The Constant Power design of the ILB maintains the output wattage to the LED array even as the system voltage diminishes. UL 924 Listed for U.S. and Canada. UL 1310 Certified, Output Class 2 Compliant. Includes single-piece TBTS test switch and charge indicator accessory kit. For use with switched and unswitched fixtures, and includes Two-wire universal AC input. Meets or exceeds all National Electric Code and Life Safety Code Emergency Lighting Requirements. Rated for use in Plenum, Damp Location, Recessed Type IC, and Enclosed and Gasketed Luminaires.

INTEGRATED TEST SWITCH

The integrated test switch mounted onto fixture bezel.

REMOTE TEST SWITCH

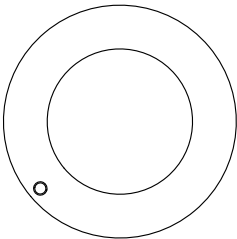
The Remote Test Switch may be mounted adjacent to the LED Fixture by others.

EMERGENCY BATTERY ACCESS

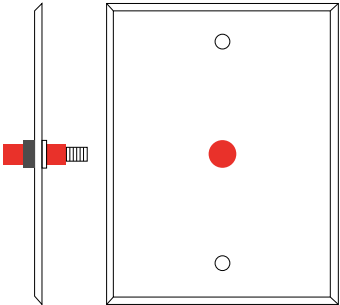
Above ceiling access is recommended for ease of service, but LED Fixture Sizes of 4" and Larger are capable of below ceiling access. IC/ICAT/CP Box and ITS option require an access panel in the ceiling (or other form of access) adjacent to the installation location of the Emergency Battery.

REMOTE LOCATION

Maximum remote mounting distance of the emergency driver shall be 50 feet. Remote location wiring provided by others. Follow all Local and National Electric/ Building Codes.



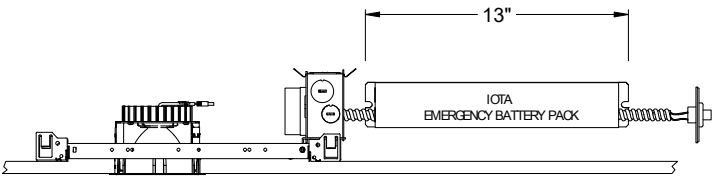
Integrated Test Switch



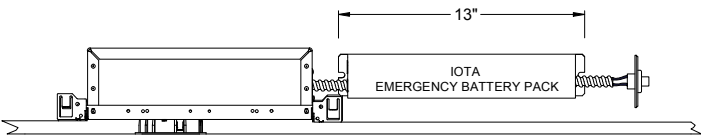
Remote Test Switch

EM MODE OUTPUT (DELIVERED LUMENS)			
LUMEN ORDERING CODE	EM7	EM10	EM12
ALL OPTIONS (10LM TO 40LM)	640	920	1100
Notes: Based on 30K, 80CRI			

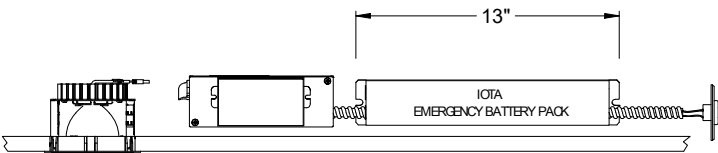
NC - NEW CONSTRUCTION
WITH EM BATTERY (REMOTE TEST SWITCH)



IC / ICAT / CP - INSULATION CONTACT HOUSING
WITH EM BATTERY (REMOTE TEST SWITCH)

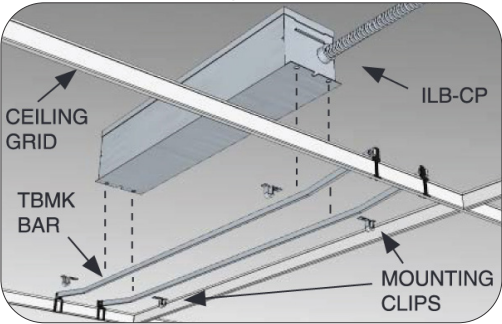


RET - RETROFIT
WITH EM BATTERY (REMOTE TEST SWITCH)



Accessory

76066 Optional T-Grid Mounting Kit¹



1. Can be used with any of the Emergency Battery Backups. Must be ordered as a separate line item.