

Light efficiency:

79 Lumen/Watt

Light quality:

CRI: 93.3

Color temperature:

3022 K

Output: 1971 lm

Peak: 6899 cd

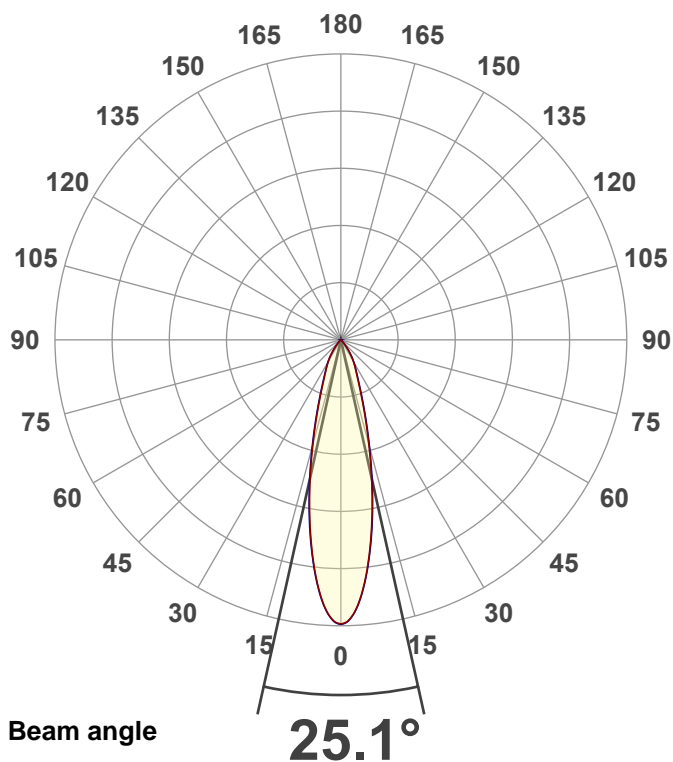
Power: 24.9 W

PF: 0.98



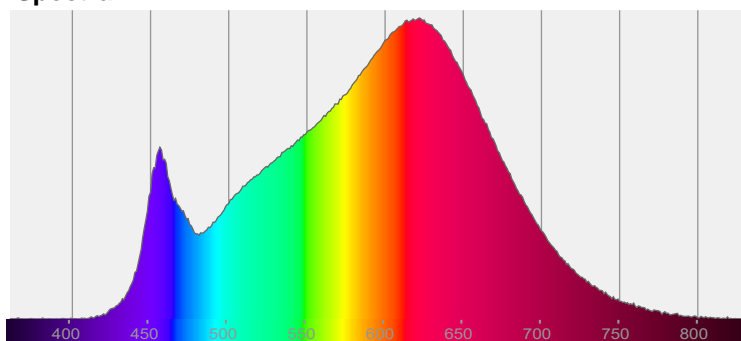
NU4-RD-TW-20LM-2765-95-25D-SBL-WH-WH

Date and time:
3/27/2023 11:26:57 AM

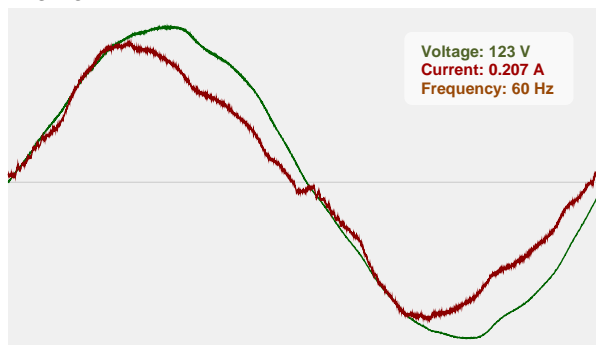


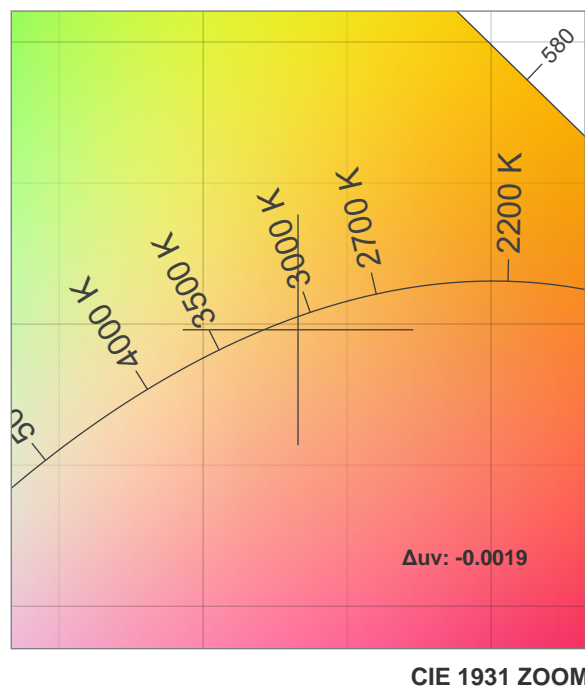
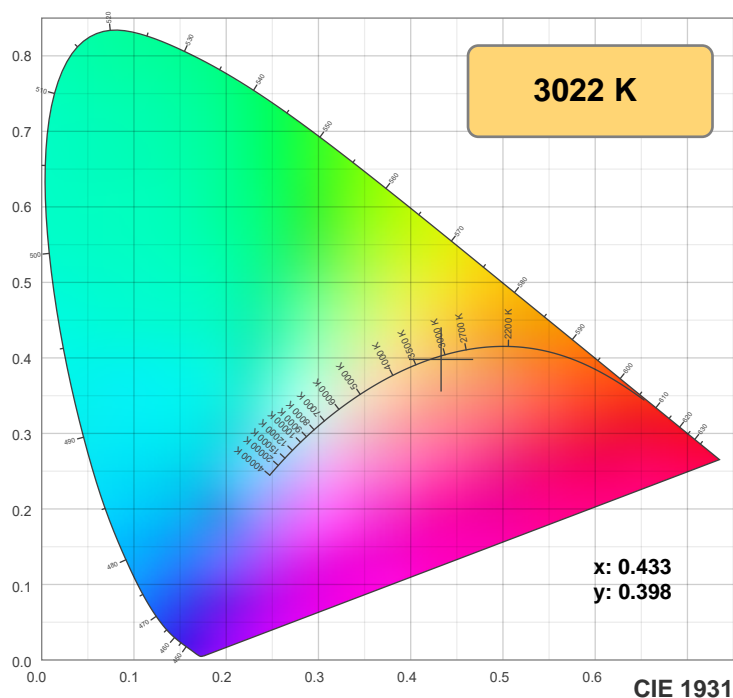
CIE 1931
x: 0.433
y: 0.398

Spectra

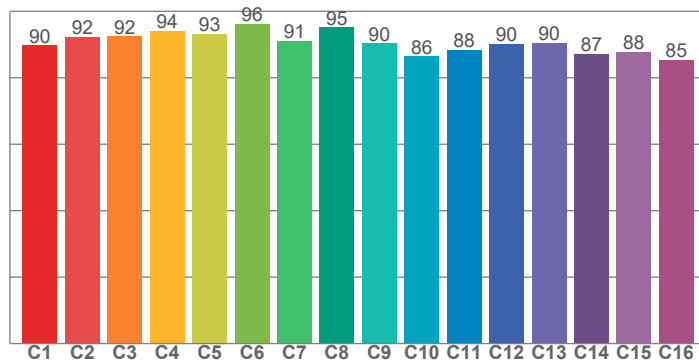


Power

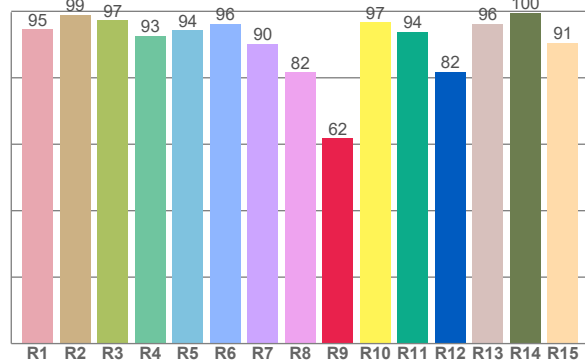




TM30: 90.8



CRI: 93.3 (R1-R8)



CRI R values, only R1-R8 are used to calculate final CRI value

R1	R2	R3	R4	R5	R6	R7	R8	R9	R10	R11	R12	R13	R14	R15
94.6	99.0	97.3	92.7	94.4	96.2	90.3	81.8	61.7	96.6	93.9	81.9	96.3	99.6	90.6

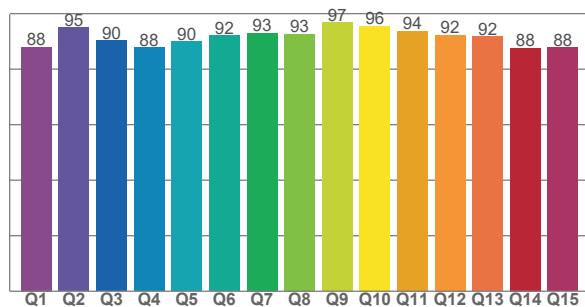
TM30 C values, 16 binned values out of total of 99 C values

C1	C2	C3	C4	C5	C6	C7	C8	C9	C10	C11	C12	C13	C14	C15	C16
89.7	92.3	92.5	94.1	93.1	96.3	91.1	95.1	90.4	86.5	88.4	90.1	90.5	87.2	87.7	85.4

CQS Q values

Q1	Q2	Q3	Q4	Q5	Q6	Q7	Q8	Q9	Q10	Q11	Q12	Q13	Q14	Q15
88.0	95.0	90.3	87.7	89.9	92.1	93.1	92.7	96.8	95.6	93.7	92.3	91.8	87.6	87.8

CQS: 91.0



Color parameters

Color temperature	Color rendering index	Red component	Color fidelity	Color gamut	Color quality scale	Color coordinate cie 1931	Color coordinate cie 1931	Color coordinate	Color coordinate	Color deviation from black body
CCT	CRI	CRI R9	TM30 Rf	TM30 Rg	CQS	x	y	u	v	Δuv
3022 K	93.3	61.7	90.8	97.7	91.0	0.433	0.398	0.251	0.346	-0.0019

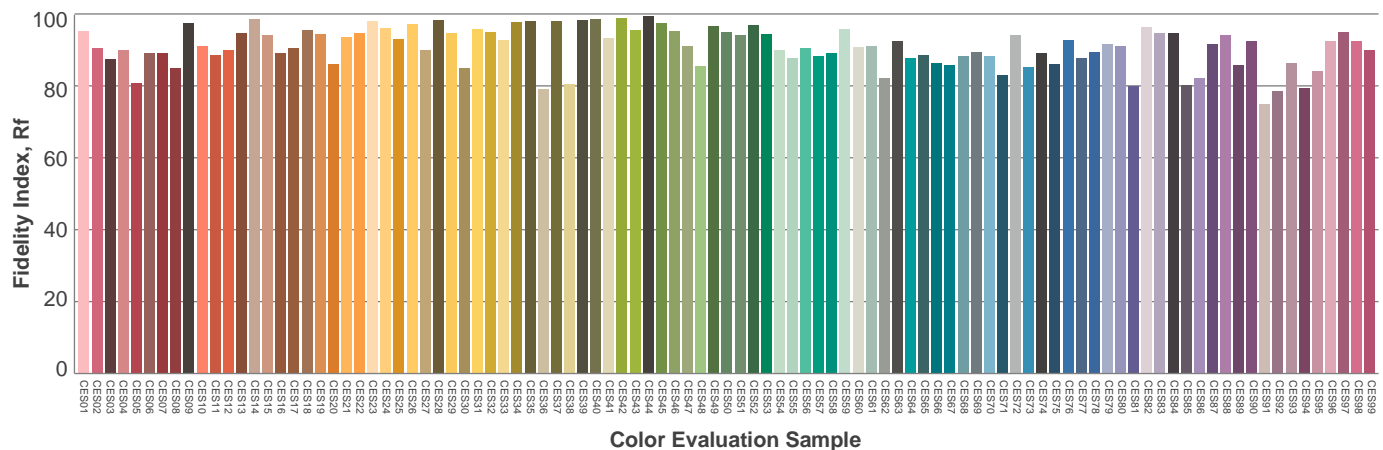
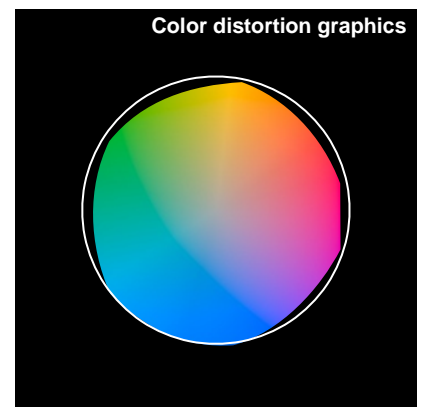
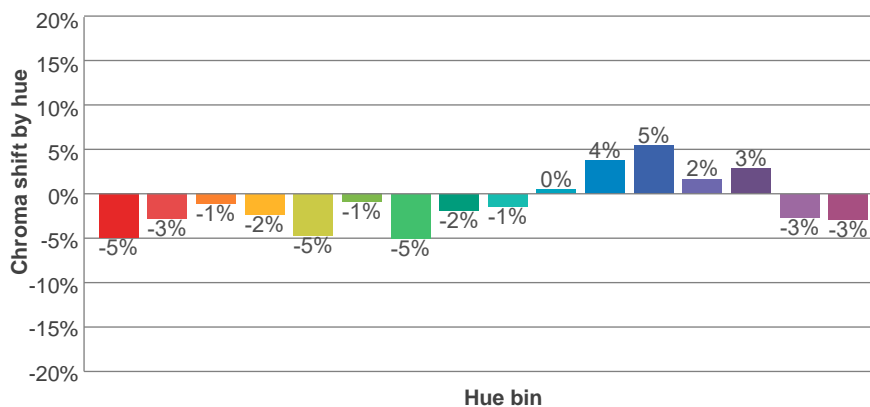
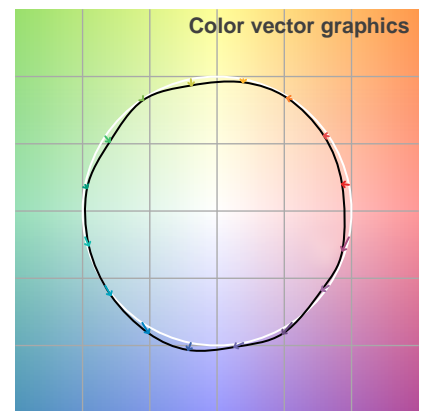
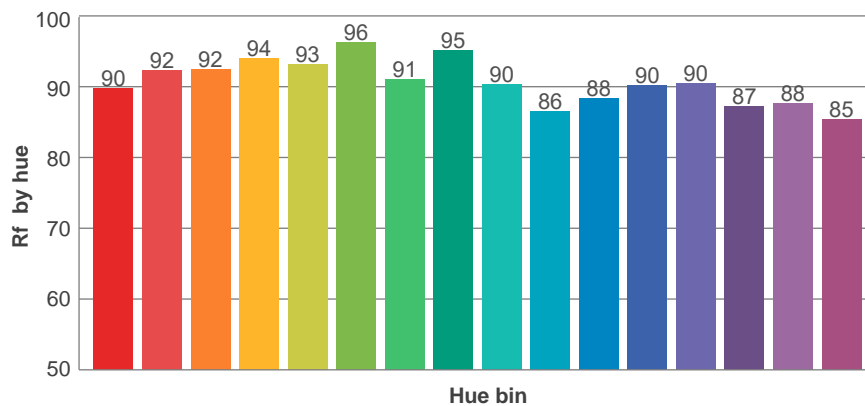
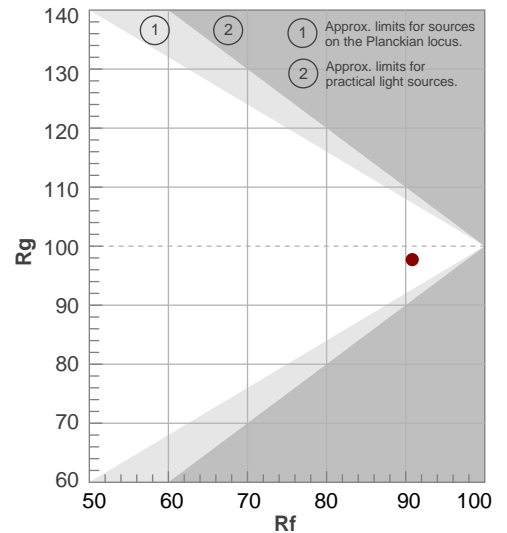
Rf 90.8

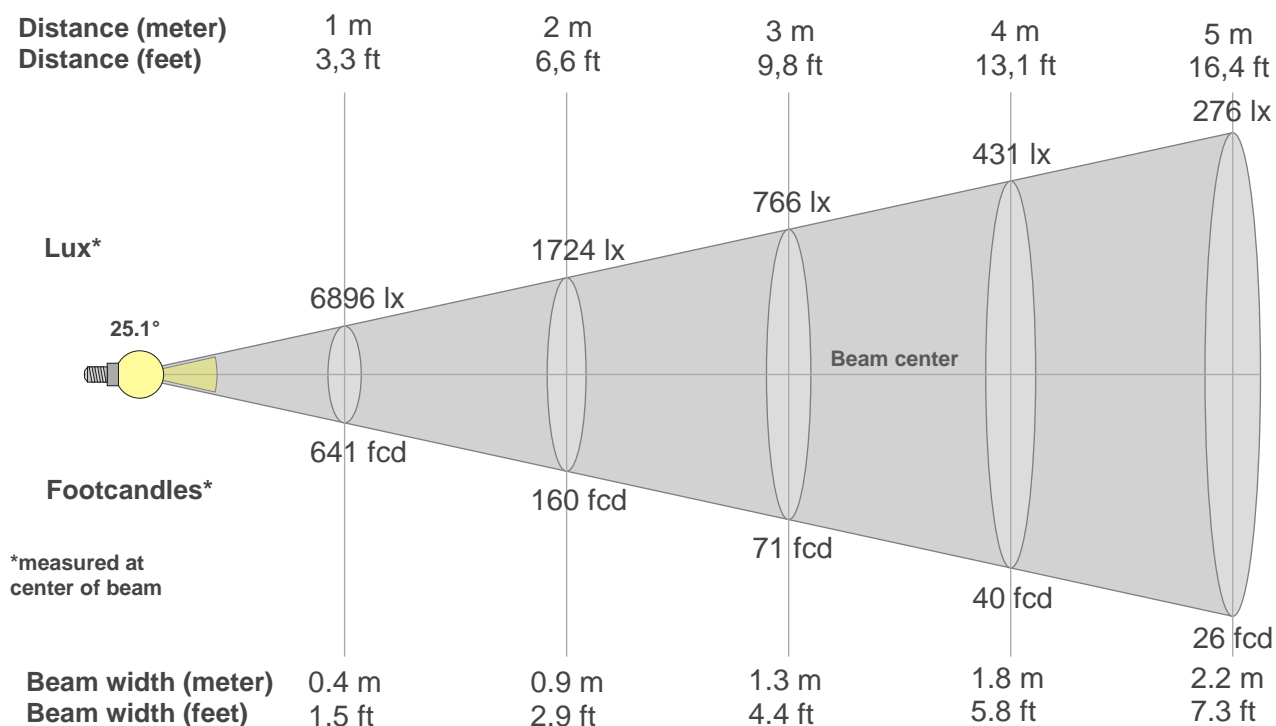
Fidelity index Rf

Rg 97.7

Gamut index Rg

Hue Bin	R _f	Graphic shifts (%)	
		Chroma	Hue
1	90	-5%	1%
2	92	-3%	3%
3	92	-1%	3%
4	94	-2%	0%
5	93	-5%	0%
6	96	-1%	0%
7	91	-5%	2%
8	95	-2%	2%
9	90	-1%	7%
10	86	0%	8%
11	88	4%	8%
12	90	5%	-1%
13	90	2%	-7%
14	87	3%	-10%
15	88	-3%	-6%
16	85	-3%	-11%





Beam intensities from 1-20m

1m	2m	3m	4m	5m	6m	7m	8m	9m	10m	11m	12m	13m	14m	15m	16m	17m	18m	19m	20m
3.3ft	6.6ft	9.8ft	13.1ft	16.4ft	19.7ft	23ft	26.2ft	29.5ft	32.8ft	36.1ft	39.4ft	42.7ft	45.9ft	49.2ft	52.5ft	55.8ft	59.1ft	62.3ft	65.6ft
6896lx	1724lx	766lx	431lx	276lx	192lx	141lx	108lx	85lx	69lx	57lx	48lx	41lx	35lx	31lx	27lx	24lx	21lx	19lx	17lx
640.7fc	160.2fc	71.2fc	40fc	25.6fc	17.8fc	13.1fc	10fc	7.9fc	6.4fc	5.3fc	4.4fc	3.8fc	3.3fc	2.8fc	2.5fc	2.2fc	2fc	1.8fc	1.6fc

Intensities in 0° c-plane

0°	2°	4°	6°	8°	10°	12°	14°	16°	18°	20°	22°	24°	26°	28°	30°	32°	34°	36°	38°
6896	6752	6365	5781	5087	4351	3623	2938	2338	1848	1463	1178	974	829	716	617	515	408	300	205
100%	98%	92%	84%	74%	63%	53%	43%	34%	27%	21%	17%	14%	12%	10%	9%	7%	6%	4%	3%

Intensities in 90° c-plane

0°	2°	4°	6°	8°	10°	12°	14°	16°	18°	20°	22°	24°	26°	28°	30°	32°	34°	36°	38°
6896	6759	6375	5802	5121	4402	3678	2997	2400	1906	1517	1226	1013	857	735	626	518	411	308	216
100%	98%	92%	84%	74%	64%	53%	43%	35%	28%	22%	18%	15%	12%	11%	9%	8%	6%	4%	3%

Intensities in 180° c-plane

0°	2°	4°	6°	8°	10°	12°	14°	16°	18°	20°	22°	24°	26°	28°	30°	32°	34°	36°	38°
6896	6752	6365	5781	5087	4351	3623	2938	2338	1848	1463	1178	974	829	716	617	515	408	300	205
100%	98%	92%	84%	74%	63%	53%	43%	34%	27%	21%	17%	14%	12%	10%	9%	7%	6%	4%	3%

Intensities in 270° c-plane

0°	2°	4°	6°	8°	10°	12°	14°	16°	18°	20°	22°	24°	26°	28°	30°	32°	34°	36°	38°
6896	6759	6375	5802	5121	4402	3678	2997	2400	1906	1517	1226	1013	857	735	626	518	411	308	216
100%	98%	92%	84%	74%	64%	53%	43%	35%	28%	22%	18%	15%	12%	11%	9%	8%	6%	4%	3%

Beam angle 50%	Field angle 10%	Cutoff angle 2,5%	Intensity ratio in 120° cone	Intensity ratio in 90° cone
25.1°	57.4°	78°	99.6%	98.5%