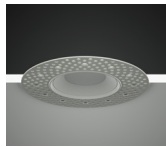
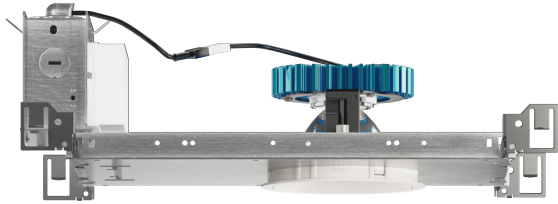


# alphabet

PROJECT INFORMATION		
JOB NAME		TYPE
ORDERING CODE		

## NU4

### 4" Round Downlight Tunable White



20° - 65° BEAM (Note: Specifications are subject to change without notice)		
18mm COB PERFORMANCE DATA LUMINUS		
LED LIGHT ENGINE	NOMINAL DELIVERED LUMENS	SYSTEM WATTAGE
15LM	1430LM @35K/95CRI	19W
20LM	1965LM @35K/95CRI	25W
Notes	Delivered lumens based on 25D optic with HET lens, (see page 2)	



15° - 65° BEAM (Note: Specifications are subject to change without notice)		
14mm COB PERFORMANCE DATA LUMINUS		
LED LIGHT ENGINE	NOMINAL DELIVERED LUMENS	SYSTEM WATTAGE
10LM	1100LM @35K/95CRI	16W
Notes	Delivered lumens based on 20D optic HET lens, (see page 2)	

15° - 65° BEAM (Note: Specifications are subject to change without notice)		
14mm COB PERFORMANCE DATA NICHIA		
LED LIGHT ENGINE	NOMINAL DELIVERED LUMENS	SYSTEM WATTAGE
15LM	1560LM @35K/80CRI	18W
20LM	1890LM @35K/80CRI	22W
25LM	2340LM @35K/80CRI	28W
30LM	2790LM @35K/80CRI	34W
Notes	Delivered lumens based on 20D optic HET lens, (see page 2)	

#### FEATURES

- 3/4" bezel regress with 1/16" micro flange
- 15° - 65° optical beam control
- UGR < 13
- 110 LPW average
- Glare control, specialty optics, trim options, and custom finishes available
- Microban® antimicrobial finish available on all exposed painted surfaces

#### LED

- Luminus tunable white COB: 95 CRI, R9 > 70: SDCM = 4-step MacAdam Ellipse; Lumen Maintenance: L<sub>70</sub> > 54,000 hrs
- Nichia tunable white COB: 80 CRI, R9 > 0: SDCM = 3-step MacAdam Ellipse; Lumen Maintenance: L<sub>90</sub> > 33,000 hrs

#### DIMMING AND CONTROLS

- eldoLED flicker free 0-10V dimming to 0% and 1%
- eldoLED flicker free DALI dimming to 0% and 1%
- Leading & trailing edge (Triac/ELV) dimming to 1%
- Casambi bluetooth dimming to 0%
- NLight control interface dimming to 0%

#### LISTING

- ULus Listed to UL1598 & UL2108; cUL Listed to CSA C22.2 #250.0
- IP65 with lens - Suitable for wet locations with lens - Suitable for damp locations without lens
- Non-conductive, dead-front construction (shower approved)
- NSF/ANSI-2 with lens (Non-Food and Splash Zones)
- 5 Year Limited warranty

#### CONSTRUCTION

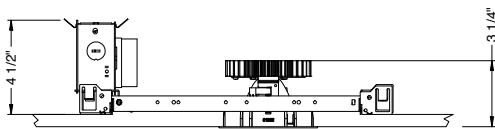
- Lexan™ (PC) highly resistant to impact and heat (240°F)
- Optimal material for wireless BLE signal connectivity
- Shatter proof acrylic bezel lens
- Electrocoated 16-gauge cold-rolled steel construction
- Accommodates ceiling thickness from 1/8" to 1-3/4"

#### ELECTRICAL

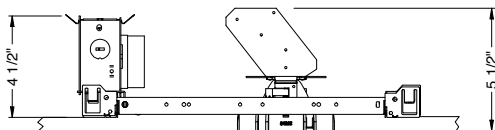
- 120V-277V, 120 only Triac / ELV
- Power factory ≥ 0.9
- 2kV driver input surge protection
- Max. ambient installation temperature 95°F (35°C)

#### FIXTURE HEIGHT

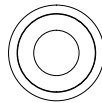
##### 10LM - 30LM LOW LUMENS



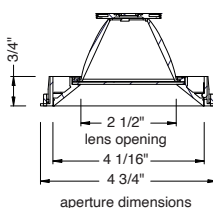
##### 35LM - 40LM HIGH LUMENS



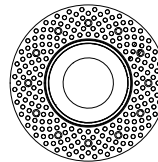
#### TRIMMED



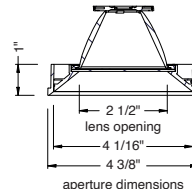
ceiling cutout  
4-1/2" diameter  
ceiling thickness  
3/8" to 2"



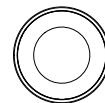
#### TRIMLESS



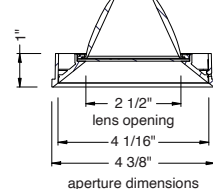
ceiling cutout  
4-1/2" diameter  
ceiling thickness  
3/8" to 2"



#### MILLWORK



ceiling cutout  
4-3/8" diameter  
ceiling thickness  
1/2" to 2"



# alphabet

PROJECT INFORMATION		
JOB NAME		TYPE
ORDERING CODE		

## 15°- 65° BEAM ORDERING CODE

SERIES	NU4	NU4																							
TYPE	RD	round downlight																							
	RDT	round downlight trimless																							
	RDTMW	round downlight trimless millwork																							
LED	TW	tunable white (Luminus)																							
DELIVERED LUMENS	10LM	1100 lm																							
	15LM	1430 lm																							
	20LM	1965 lm																							
Standard Configuration: 3500K 95CRI 20D, CL Calculated Delivered Lumens = [Delivered Lumen Value] x [CCT Multiplier] x [Reflector Multiplier]																									
CCT	2765	2700K to 6500K tunable white																							
		<table border="1"> <thead> <tr> <th>CCT</th> <th>2700K</th> <th>3000K</th> <th>3500K</th> <th>4000K</th> <th>5000K</th> <th>5700K</th> <th>6500K</th> </tr> </thead> <tbody> <tr> <td>CCT MULTIPLIER FOR LUMEN OUTPUT</td> <td>0.91</td> <td>0.98</td> <td>1.00</td> <td>0.99</td> <td>1.00</td> <td>1.01</td> <td>1.02</td> </tr> <tr> <td>EML RATIO<sup>2</sup></td> <td>0.49</td> <td>0.57</td> <td>0.68</td> <td>0.79</td> <td>0.96</td> <td>1.04</td> <td>1.12</td> </tr> </tbody> </table>	CCT	2700K	3000K	3500K	4000K	5000K	5700K	6500K	CCT MULTIPLIER FOR LUMEN OUTPUT	0.91	0.98	1.00	0.99	1.00	1.01	1.02	EML RATIO <sup>2</sup>	0.49	0.57	0.68	0.79	0.96	1.04
	CCT	2700K	3000K	3500K	4000K	5000K	5700K	6500K																	
	CCT MULTIPLIER FOR LUMEN OUTPUT	0.91	0.98	1.00	0.99	1.00	1.01	1.02																	
EML RATIO <sup>2</sup>	0.49	0.57	0.68	0.79	0.96	1.04	1.12																		
1840	1800K to 4000K tunable white																								
	<table border="1"> <thead> <tr> <th>CCT</th> <th>1800K</th> <th>2000K</th> <th>2400K</th> <th>2700K</th> <th>3000K</th> <th>3500K</th> <th>4000K</th> </tr> </thead> <tbody> <tr> <td>CCT MULTIPLIER FOR LUMEN OUTPUT</td> <td>0.67</td> <td>0.74</td> <td>0.8</td> <td>0.85</td> <td>0.88</td> <td>0.95</td> <td>1.01</td> </tr> <tr> <td>EML RATIO<sup>2</sup></td> <td>0.21</td> <td>0.33</td> <td>0.46</td> <td>0.53</td> <td>0.59</td> <td>0.67</td> <td>0.73</td> </tr> </tbody> </table>	CCT	1800K	2000K	2400K	2700K	3000K	3500K	4000K	CCT MULTIPLIER FOR LUMEN OUTPUT	0.67	0.74	0.8	0.85	0.88	0.95	1.01	EML RATIO <sup>2</sup>	0.21	0.33	0.46	0.53	0.59	0.67	0.73
CCT	1800K	2000K	2400K	2700K	3000K	3500K	4000K																		
CCT MULTIPLIER FOR LUMEN OUTPUT	0.67	0.74	0.8	0.85	0.88	0.95	1.01																		
EML RATIO <sup>2</sup>	0.21	0.33	0.46	0.53	0.59	0.67	0.73																		
CRI	95	95 typical, 90 minimum																							
OPTIC & LM MULTIPLIER SEE PAGE 6, 7	15D	15 degrees	(1.00)																						
	20D	20 degrees	(1.00)																						
	25D	25 degrees	(1.00)																						
	40D	40 degrees	(1.00)																						
	55D	55 degrees	(0.98)																						
	65D	65 degrees	(0.98)																						
BEZEL LENS SEE PAGE 4	SBL	smoothing beam lens	(1.00)																						
	NL	no lens	(0.96)																						
	HET	high efficiency textured lens, similar to Solite™	(1.00)																						
	HCL <sup>1</sup>	honeycomb louver	(0.71)																						
	DL	diffused lens	(0.97)																						
	CL	clear lens	(0.90)																						
TRIM COLOR SEE PAGE 4	BK	black																							
	WH	white																							
	MC	matte chrome																							
	BZ	bronze																							
	WT	wheat																							
	CC <sup>3</sup>	custom color, consult factory for details																							
Antimicrobial finish, add AM to black, white or matte chrome i.e. BKAM. Not applicable to trimless option. Do not include in trimless ordering code.																									
BEZEL COLOR SEE PAGE 4	BK	black	(0.98)																						
	WH	white	(1.00)																						
	MC	matte chrome	(0.99)																						
	BZ	bronze	(0.98)																						
	WT	wheat	(0.99)																						
	CC <sup>2</sup>	custom color, consult factory for details																							
Antimicrobial finish, add AM to black, white or matte chrome i.e. BKAM.																									

## 15°- 65° BEAM ORDERING CODE

MOUNTING OPTIONS SEE PAGE 10, 11	NC	new construction with ceiling fitting plate,
	RET	retrofit, no ceiling fitting plate,
VOLTAGE	120	120V
	UNV	120V-277V
DIMMING	CASZ	Casambi Bluetooth dim to zero
	NLT	nLight control interface: standard Cat-5/RJ45 connection (female), dimming to 0%
	DIM10Z <sup>3</sup>	eldoLED flicker free 0-10V dimming to 0%
	DALIZ	eldoLED flicker free DALI dimming to 0%

## ADDITIONAL MOUNTING INFO

New Construction Bar Hangers (included)	Mounting Length: 14-3/4" to 26"
Extension Kit p/n: K20266 (ordered separately, 1 per fixture)	Extends a pair of Bar Hangers Total Mounting Length: 29" to 48"

## YOUR COMPLETED ORDERING CODE

Follow the steps to specify your fixture, example:
<b>NU4 - RD - TW - 15LM - 2765 - 95 - 20D - 120 - CASZ - NC - WH - WH</b>

## NOTES

- HCL not available with lens. Multiply delivered lumens by (0.78) and beam spread by (0.80) when honeycomb louver is chosen.
- Custom set up fee plus minimum quantity required per color.
- Requires 2 wall controllers (see wiring diagram).

\* EML = equivalent melanopic lux. To calculate EML, multiply the measured photopic lux by the EML ratio for the given CCT. Example: 254 lux x 0.79 = 200 melanopic lux at 4000K.

\* EldoLED uses logarithmic dimming curve as standard. For linear dimming curve, add "LIN" after dimming code, i.e. DIM10LIN.

# alphabet

PROJECT INFORMATION		
JOB NAME		TYPE
ORDERING CODE		

## 15°- 65° BEAM ORDERING CODE

SERIES	NU4	NU4										
TYPE	RD	round downlight										
	RDT	round downlight trimless										
	RDTMW	round downlight trimless millwork										
LED	TW	tunable white (Nichia)										
DELIVERED LUMENS	15LM	1560 lm										
	20LM	1890 lm										
	25LM	2340 lm										
	30LM	2790 lm										
Standard Configuration: 3500K 80CRI 20D, HET Calculated Delivered Lumens = [Delivered Lumen Value] x [CCT Multiplier] x [Reflector Multiplier]												
CCT	2750	2700K to 5000K tunable white										
		<table border="1"> <thead> <tr> <th>CCT</th> <th>2700K</th> <th>3000K</th> <th>3500K</th> <th>4000K</th> <th>5000K</th> </tr> </thead> <tbody> <tr> <td>EML RATIO<sup>2</sup></td> <td>0.43</td> <td>0.51</td> <td>0.63</td> <td>0.69</td> <td>0.8</td> </tr> </tbody> </table>	CCT	2700K	3000K	3500K	4000K	5000K	EML RATIO <sup>2</sup>	0.43	0.51	0.63
CCT	2700K	3000K	3500K	4000K	5000K							
EML RATIO <sup>2</sup>	0.43	0.51	0.63	0.69	0.8							
CRI	80	80 CRI										
OPTIC & LM MULTIPLIER SEE PAGE 8, 9	15D	15 degrees (1.00)										
	20D	20 degrees (1.00)										
	35D	35 degrees (1.00)										
	55D	55 degrees (0.98)										
	65D	65 degrees (0.98)										
BEZEL LENS SEE PAGE 5	NL	no lens (0.96)										
	CL	clear lens (0.90)										
	DL	diffused lens (0.97)										
	HCL	honeycomb louver (0.71)										
	HET	high efficiency textured lens, similar to Solite™ (1.00)										
TRIM COLOR SEE PAGE 5	SBL	smoothing beam lens (1.00)										
	BK	black										
	WH	white										
	MC	matte chrome										
	BZ	bronze										
	WT	wheat										
	CC <sup>2</sup>	custom color, consult factory for details										
Antimicrobial finish, add AM to black, white or matte chrome i.e. BKAM.												
Not applicable to trimless option. Do not include in trimless ordering code.												
BEZEL COLOR SEE PAGE 5	BK	black (0.98)										
	WH	white (1.00)										
	MC	matte chrome (0.99)										
	BZ	bronze (0.98)										
	WT	wheat (0.99)										
	CC <sup>2</sup>	custom color, consult factory for details										
Antimicrobial finish, add AM to black, white or matte chrome i.e. BKAM.												

## 15°- 65° BEAM ORDERING CODE

MOUNTING OPTIONS SEE PAGE 10, 11	NC	new construction with ceiling fitting plate,
	RET	retrofit, no ceiling fitting plate,
VOLTAGE	120	120V
	UNV	120V-277V
DIMMING	CASZ	Casambi Bluetooth dim to zero
	NLT	nLight control interface: standard Cat-5/RJ45 connection (female), dimming to 0%
	DIM10Z <sup>4</sup>	eldoLED flicker free 0-10V dimming to 0%
	DALIZ	eldoLED flicker free DALI dimming to 0%

## ADDITIONAL MOUNTING INFO

New Construction Bar Hangers (included)	Mounting Length: 14-3/4" to 26"
Extension Kit p/n: K20266 (ordered separately, 1 per fixture)	Extends a pair of Bar Hangers Total Mounting Length: 29" to 48"

## YOUR COMPLETED ORDERING CODE

Follow the steps to specify your fixture, example:
<b>NU4 - RD - TW - 20LM - 2750 - 80 - 15D - 120 - CASZ - NC - WH - WH</b>

## NOTES

- HCL not available with lens. Multiply delivered lumens by (0.78) and beam spread by (0.80) when honeycomb louver is chosen.
- Custom set up fee plus minimum quantity required per color.
- Requires 2 wall controllers (see wiring diagram).

<sup>2</sup>EML = equivalent melanopic lux. To calculate EML, multiply the measured photopic lux by the EML ratio for the given CCT.  
Example: 290 lux x 0.69 = 200 melanopic lux at 4000K.

# alphabet

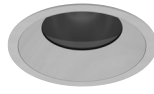
PROJECT INFORMATION		
JOB NAME		TYPE
ORDERING CODE		

## TRIM OPTIONS

### TRIM/BEZEL COLORS



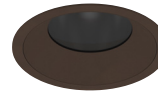
WH



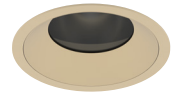
MC



BK



BZ



WT

## LUMINUS - OPTICAL OPTIONS

- UGR calculation based on CIE 117-1995; room size: 4H X 8H, reflectance: 70/50/20;
- UGR calculation based on 15LM fixtures, unless otherwise noted.

### HCL

Honeycomb Louver



OPTIC	BEAM ANGLE	UGR
15D	16	9.8
20D	19	11
25D	22	11
40D	33	13
55D	49	15
65D	56	16.1

15D UGR calculation based on 10LM fixtures

### NL

No Lens



OPTIC	BEAM ANGLE	UGR
15D	17	13.1
20D	20	13.8
25D	24	13.7
40D	38	15.4
55D	55	17
65D	67	19.4

15D UGR calculation based on 10LM fixtures

### CL

Clear Lens



OPTIC	BEAM ANGLE	UGR
15D	17	12.9
20D	20	13.5
25D	24	13.4
40D	38	15.1
55D	55	16.5
65D	67	19.2

15D UGR calculation based on 10LM fixtures

### DL

Diffused Lens



OPTIC	BEAM ANGLE	UGR
15D	37	18.7
20D	39	19.6
25D	43	20
40D	52	21.3
55D	61	22
65D	71	24

15D UGR calculation based on 10LM fixtures

### HET

High Efficiency Textured Lens



OPTIC	BEAM ANGLE	UGR
15D	21	13
20D	23	14
25D	28	14.3
40D	40	16.4
55D	57	17.5
65D	65	50.5

15D UGR calculation based on 10LM fixtures

### SBL

Smoothing Beam Lens



OPTIC	BEAM ANGLE	UGR
15D	18	12.5
20D	21	13.3
25D	25	13.5
40D	38	15.6
55D	57	16.7
65D	67	20

15D UGR calculation based on 10LM fixtures

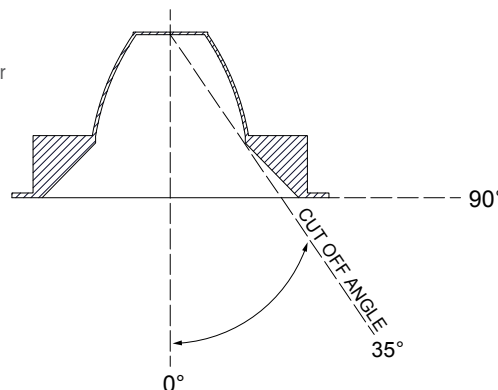
## GLARE CONTROL

### CUT-OFF ANGLE

Visual comfort is achieved with a lower cut-off angle due to improved glare control. The smaller the cut-off angle, the easier it is on the eye.

Alphabet downlights have been thoughtfully engineered to eliminate glare while still delivering functional illumination.

- Cutoff angle of CL is 35 degrees;



# alphabet

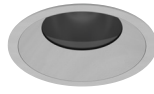
PROJECT INFORMATION		
JOB NAME		TYPE
ORDERING CODE		

## TRIM OPTIONS

### TRIM/BEZEL COLORS



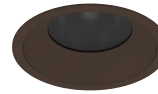
WH



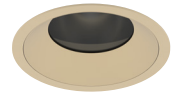
MC



BK



BZ



WT

## NICHIA - OPTICAL OPTIONS

- UGR calculation based on CIE 117-1995; room size: 4H X 8H, reflectance: 70/50/20;
- UGR calculation based on 15LM fixtures, unless otherwise noted.

### HCL

Honeycomb Louver



OPTIC	BEAM ANGLE	UGR
15D	13	10.3
20D	19	10.5
35D	30	12.4
55D	49	14.5
65D	54	16

### NL

No Lens



OPTIC	BEAM ANGLE	UGR
15D	14	14.2
20D	20	14.1
35D	34	15.5
55D	54	16.4
65D	67	19.5

### CL

Clear Lens



OPTIC	BEAM ANGLE	UGR
15D	14	13.9
20D	20	13.8
35D	34	15.2
55D	54	16.1
65D	67	19.2

### DL

Diffused Lens



OPTIC	BEAM ANGLE	UGR
15D	35	19.6
20D	40	20
35D	50	21.4
55D	58	21.9
65D	69	23.9

### HET

High Efficiency Textured Lens



OPTIC	BEAM ANGLE	UGR
15D	18	14.2
20D	24	14.5
35D	36	16.5
55D	55	17.5
65D	63	20.4

### SBL

Smoothing Beam Lens



OPTIC	BEAM ANGLE	UGR
15D	15	13.7
20D	21	13.6
35D	34	15.6
55D	56	16.7
65D	65	19.7

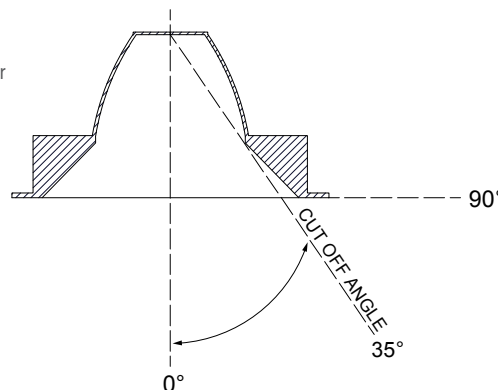
## GLARE CONTROL

### CUT-OFF ANGLE

Visual comfort is achieved with a lower cut-off angle due to improved glare control. The smaller the cut-off angle, the easier it is on the eye.

Alphabet downlights have been thoughtfully engineered to eliminate glare while still delivering functional illumination.

- Cutoff angle of CL is 35 degrees;

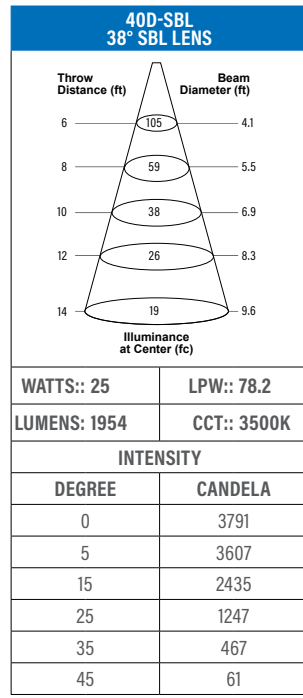
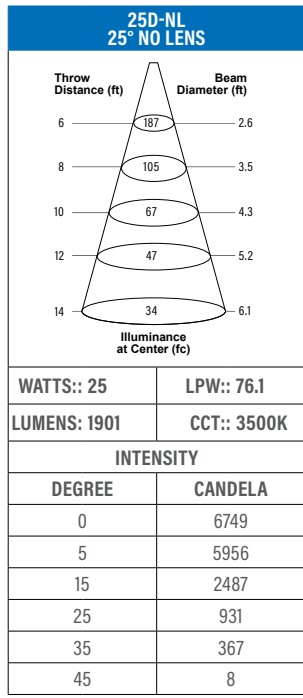
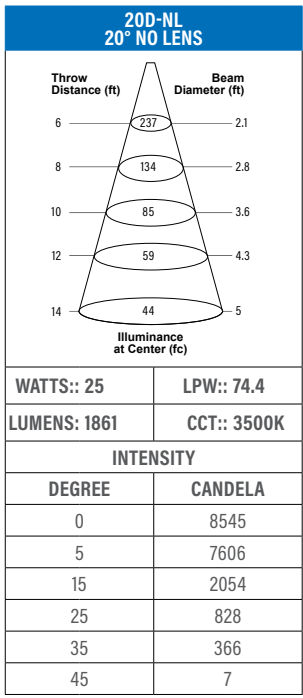
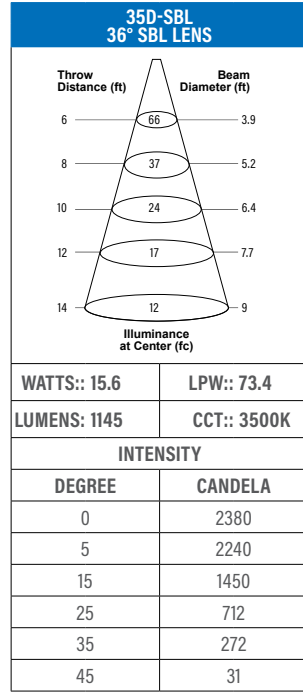
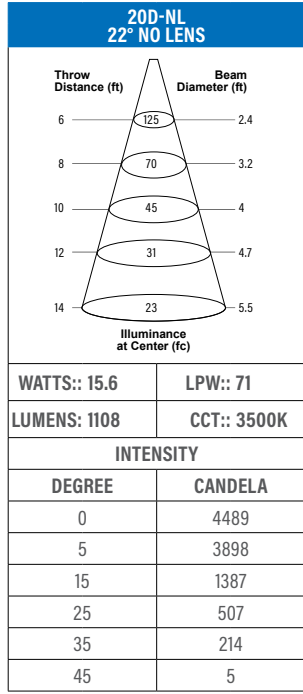
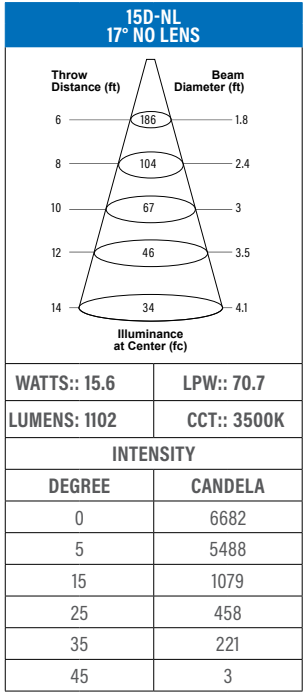


# alphabet

PROJECT INFORMATION		
JOB NAME		TYPE
ORDERING CODE		

## PHOTOMETRIC DATA

### LUMINUS

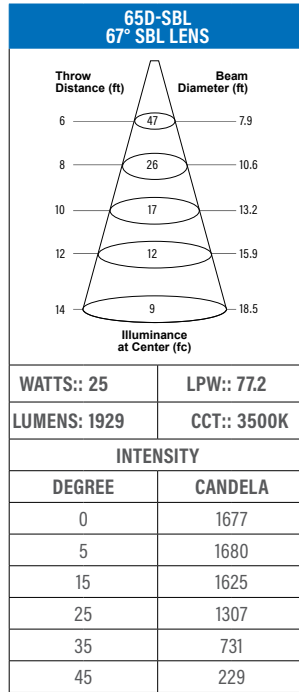
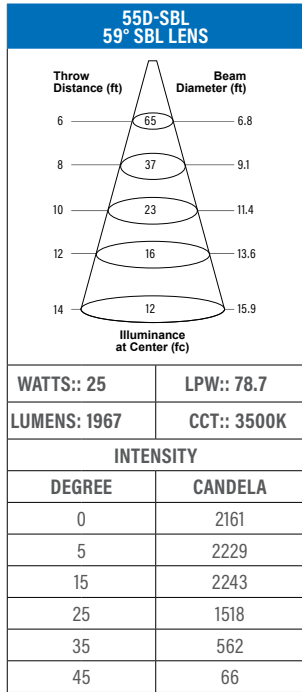
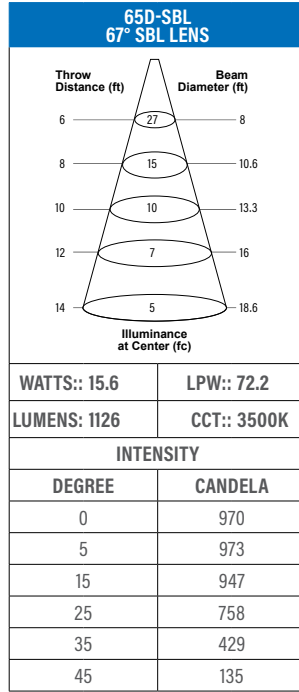
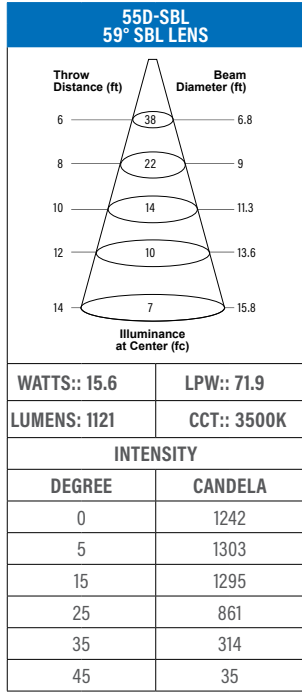


# alphabet

PROJECT INFORMATION		
JOB NAME		TYPE
ORDERING CODE		

## PHOTOMETRIC DATA

### LUMINUS



# alphabet

PROJECT INFORMATION		
JOB NAME		TYPE
ORDERING CODE		

## PHOTOMETRIC DATA

NICHIA

**15D-NL  
14° NO LENS**

Throw Distance (ft)	Beam Diameter (ft)
6	1.4
8	1.9
10	2.4
12	2.9
14	3.4

429  
241  
154  
107  
79  
Illuminance at Center (fc)

WATTS:: 21.8	LPW:: 85.5
LUMENS: 1864	CCT:: 3500K
INTENSITY	
DEGREE	CANDELA
0	15429
5	10816
15	1598
25	756
35	392
45	3

**20D-NL  
20° NO LENS**

Throw Distance (ft)	Beam Diameter (ft)
6	2.2
8	2.9
10	3.6
12	4.3
14	5.1

239  
134  
86  
60  
44  
Illuminance at Center (fc)

WATTS:: 21.8	LPW:: 85.1
LUMENS: 1856	CCT:: 3500K
INTENSITY	
DEGREE	CANDELA
0	8586
5	7291
15	2175
25	819
35	376
45	4

**35D-SBL  
34° SBL LENS**

Throw Distance (ft)	Beam Diameter (ft)
6	3.6
8	4.8
10	6
12	7.3
14	8.5

116  
65  
42  
29  
21  
Illuminance at Center (fc)

WATTS:: 21.8	LPW:: 86.9
LUMENS: 1894	CCT:: 3500K
INTENSITY	
DEGREE	CANDELA
0	4188
5	3910
15	2394
25	1160
35	452
45	46

**15D-NL  
14° NO LENS**

Throw Distance (ft)	Beam Diameter (ft)
6	1.4
8	1.9
10	2.4
12	2.9
14	3.4

873  
491  
314  
218  
160  
Illuminance at Center (fc)

WATTS:: 51.9	LPW:: 73.1
LUMENS: 3795	CCT:: 3500K
INTENSITY	
DEGREE	CANDELA
0	31413
5	22019
15	3253
25	1540
35	799
45	6

**20D-NL  
20° NO LENS**

Throw Distance (ft)	Beam Diameter (ft)
6	2.2
8	2.9
10	3.6
12	4.3
14	5.1

486  
273  
175  
121  
89  
Illuminance at Center (fc)

WATTS:: 51.9	LPW:: 72.8
LUMENS: 3778	CCT:: 3500K
INTENSITY	
DEGREE	CANDELA
0	17480
5	14844
15	4427
25	1668
35	766
45	8

**35D-SBL  
34° SBL LENS**

Throw Distance (ft)	Beam Diameter (ft)
6	3.6
8	4.8
10	6
12	7.3
14	8.5

237  
133  
85  
59  
44  
Illuminance at Center (fc)

WATTS:: 51.9	LPW:: 74.3
LUMENS: 3855	CCT:: 3500K
INTENSITY	
DEGREE	CANDELA
0	8526
5	7961
15	4873
25	2361
35	921
45	93

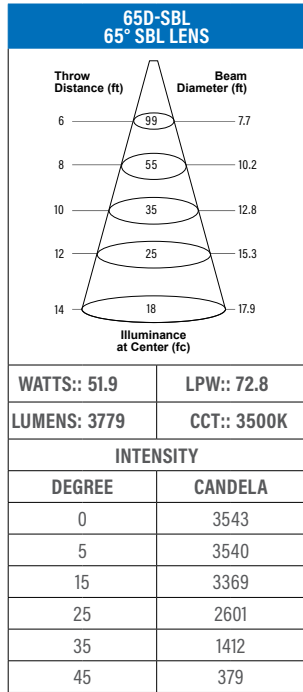
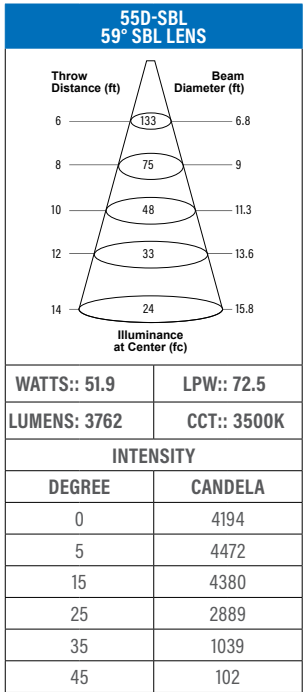
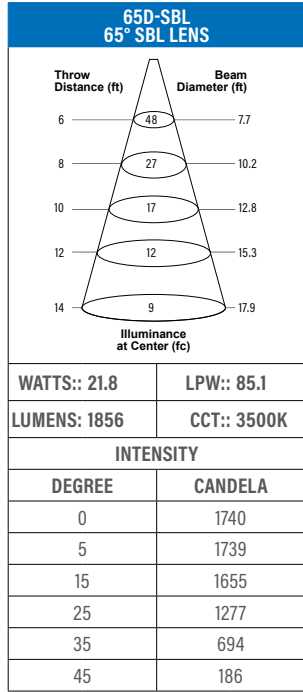
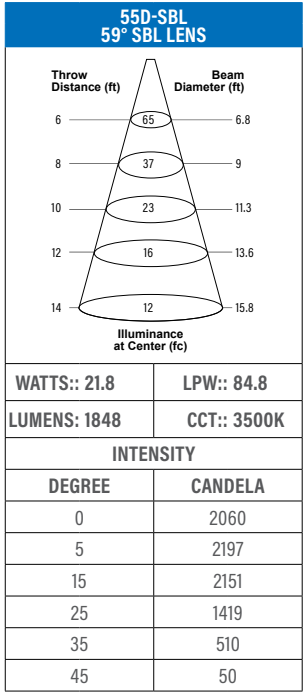


# alphabet

PROJECT INFORMATION		
JOB NAME		TYPE
ORDERING CODE		

## PHOTOMETRIC DATA

NICHIA

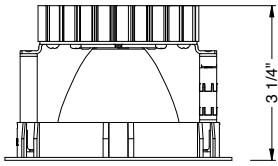


PROJECT INFORMATION		
JOB NAME		TYPE
ORDERING CODE		

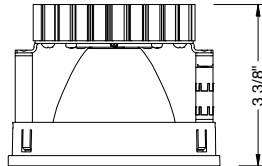
## MOUNTING OPTIONS

### FIXTURE HEIGHT

10LM - 30LM LOW LUMENS

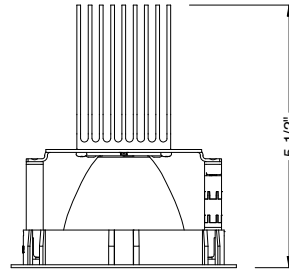


TRIMMED

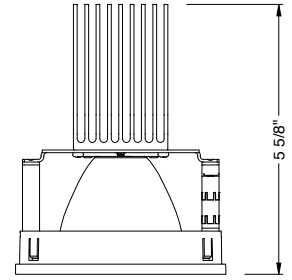


TRIMLESS & MILLWORK

35LM - 40LM HIGH LUMENS



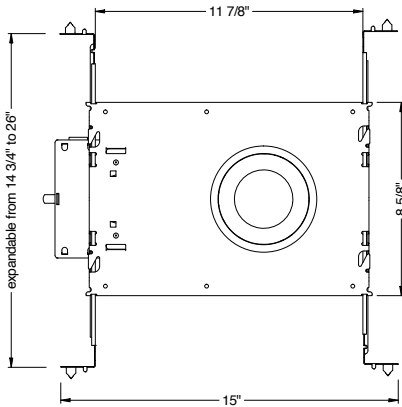
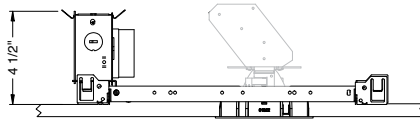
TRIMMED



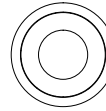
TRIMLESS & MILLWORK

### NC - NEW CONSTRUCTION

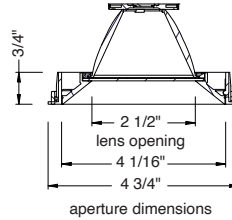
TRIM



TRIM

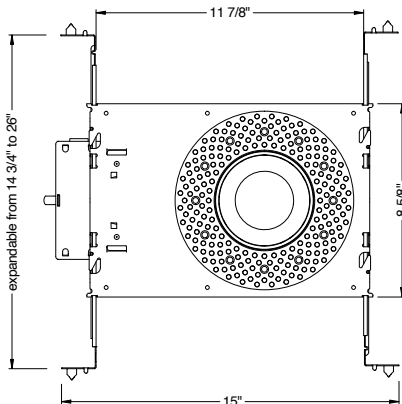
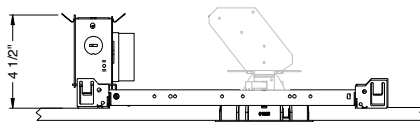


ceiling cutout  
4-1/2" diameter  
ceiling thickness  
3/8" to 2"

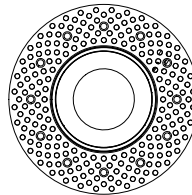


aperture dimensions

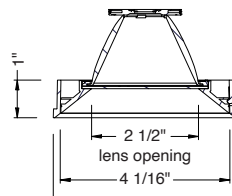
TRIMLESS



TRIMLESS

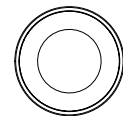


ceiling cutout  
4-1/2" diameter  
ceiling thickness  
3/8" to 2"

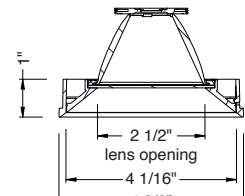


aperture dimensions

TRIMLESS/MILLWORK



ceiling cutout  
4-3/8" diameter  
ceiling thickness  
1/2" to 2"

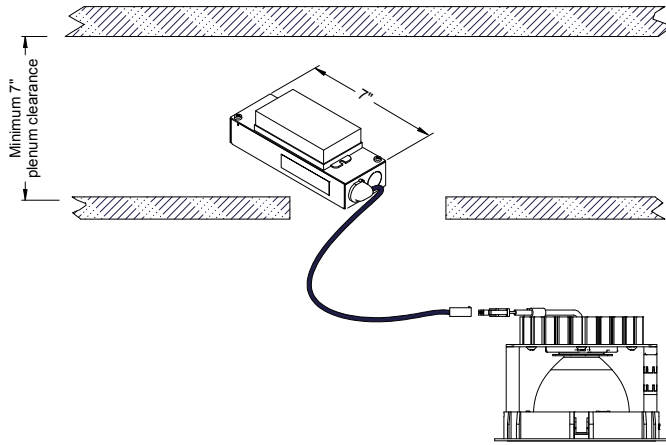


aperture dimensions

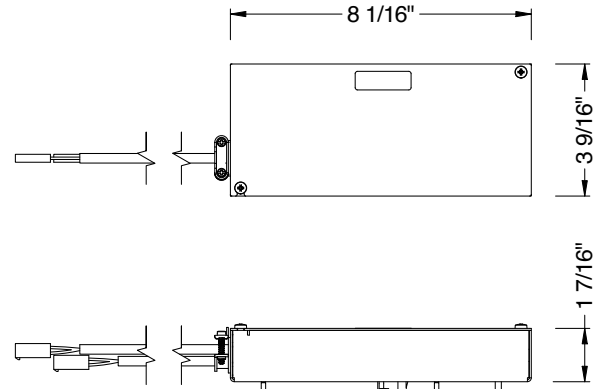
PROJECT INFORMATION		
JOB NAME	TYPE	
ORDERING CODE		

## MOUNTING OPTIONS

### RET - RETRO TRIM/TRIMLESS



### NC - DRIVER BOX SIZE TRIM/TRIMLESS



#### NOTE:

For servicing the driver/j-box, access above ceiling is required. T-Bar type ceilings with removable adjacent tile access recommended. Hard lid ceilings may require access doors directly adjacent to luminaire.

RATINGS / CERTIFICATIONS	NC	RET
TYPE NON-IC	✓	✓
TYPE IC		
CHICAGO PLENUM (CCEA)		
SUITABLE FOR AIR HANDLING PLENUMS	✓	✓
REDUCED AIRFLOW (WITH LENS) ASTM E283	✓	✓

CEILING THICKNESS	
FIXTURE TYPE	MOUNTING TYPE
	STANDARD CEILING THICKNESS
TRIM	1/8" to 1-5/8"
TRIMLESS	3/8" to 1-3/4"
MILLWORK (TRIMLESS)	1/2" to 1-3/4"