

PROJECT INFORMATION		
JOB NAME		TYPE
ORDERING CODE		

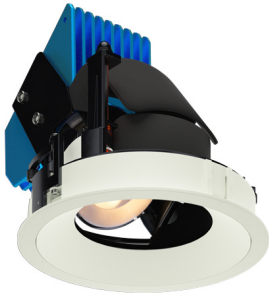
## NU4 LOPRO

4" Round Adjustable Standard White JA8



AT  
airtight

DF  
dead-front

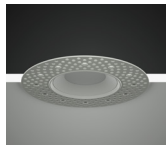


20° - 55° BEAM (Note: Specifications are subject to change without notice)		
9mm COB PERFORMANCE DATA		
LED LIGHT ENGINE	NOMINAL DELIVERED LUMENS	SYSTEM WATTAGE
10LM	740LM @30K/90CRI	9W
15LM	1080LM @30K/90CRI	13W
20LM	1410LM @30K/90CRI	17W
Notes	Delivered lumens based on 35D optic with clear lens, (see page 2)	

15° BEAM (Note: Specifications are subject to change without notice)		
6mm COB PERFORMANCE DATA		
LED LIGHT ENGINE	NOMINAL DELIVERED LUMENS	SYSTEM WATTAGE
10LM	730LM @30K/90CRI	11W
15LM	1025LM @30K/90CRI	19W
Notes	Delivered lumens based on 15D optic with clear lens, (see page 2)	



Trim



Trimless



Trimless Millwork

### FEATURES

- True 40° Tilt with <5% beam disruption (clipping)
- Zero ceiling line obstruction at Full Tilt
- Concentric Tilt Tracking ensures minimal light loss
- Double jointed driver box allows for 4" shallow plenum installation
- 15° - 55° optical beam control
- UGR <5
- Multiple mounting, glare control options, trims, and finishes available

### DIMMING AND CONTROLS

- 0-10V dimming to 1%
- leading & trailing edge (Triac / ELV) dimming to 1%

### CONSTRUCTION

- Lexan™ (PC) highly resistant to impact and heat (240°F)
- Optimal material for wireless BLE signal connectivity
- Shatter proof acrylic bezel lens
- Electrocoated 16-gauge cold-rolled steel construction
- Accommodates ceiling thickness from 0.5" to 2.0"

### LED

- 90 CRI: SDCM = 2-step MacAdam Ellipse, Lumen Maintenance: L<sub>70</sub> > 66,000 hrs

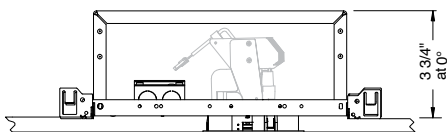
### LISTING

- ULus Listed to UL1598 & UL2108; cUL Listed to CSA C22.2 #250.0
- IP65 with lens - Suitable for wet locations with lens - Suitable for damp locations without lens
- Non-conductive, dead-front construction (shower approved)
- NSF/ANSI-2 with lens (Non-Food and Splash Zones)
- 5 Year Limited warranty

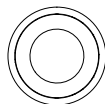
### ELECTRICAL

- 120V-277V, 120 only Triac / ELV
- Power factory ≥ 0.9
- 2kV driver input surge protection
- Remote emergency test switch
- 10W (T20 CEC) EM 90min battery
- Max. ambient installation temperature 95°F (35°C)

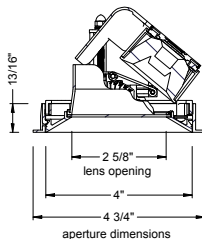
### FIXTURE HEIGHT



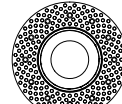
### TRIMMED



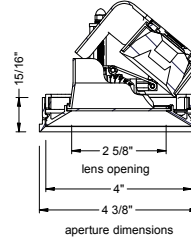
ceiling cutout  
4-3/8" diameter  
ceiling thickness  
0.4" to 2.0"



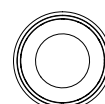
### TRIMLESS



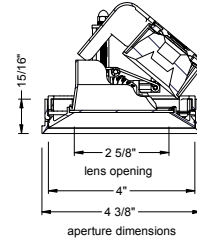
ceiling cutout  
4-1/2" diameter  
ceiling thickness  
0.4" to 2.0"



### MILLWORK



ceiling cutout  
4-3/8" diameter  
ceiling thickness  
0.5" to 2.0"



# alphabet

PROJECT INFORMATION		
JOB NAME		TYPE
ORDERING CODE		

## 15° - 55° BEAM ORDERING CODE

SERIES	NU4	NU4					
TYPE	RALP	round adjustable lopro					
	RATLP	round adjustable trimless lopro					
	RATMWLP	round adjustable trimless millwork lopro					
LED	SW	standard white					
DELIVERED LUMENS	10LM	740 lm					
	15LM	1080 lm					
	20LM	1410 lm					
Calculated Delivered Lumens = [Delivered Lumen Value] x [CCT Multiplier] x [Optic Multiplier] x [Lens Multiplier]							
CCT	27K	2700K	CCT	2700K	3000K	3500K	4000K
	30K	3000K	CRI	90+	90+	90+	90+
	35K	3500K	CCT MULTIPLIER FOR LUMEN OUTPUT	0.96	1.00	1.03	1.06
	40K	4000K					
CRI	90	90 CRI					
OPTIC & LM MULTIPLIER SEE PAGE 3	15D <sup>1</sup>	15 degrees	(1.05)				
	20D	20 degrees	(0.93)				
	25D	25 degrees	(0.96)				
	35D	35 degrees	(1.00)				
	50D	50 degrees	(0.97)				
TIR OPTIC ACCESSORY SEE PAGE 3	NA	no accessory	(1.00)				
BEZEL LENS SEE PAGE 3	CL	clear lens	(0.98)				
	DL	diffused lens	(0.91)				
	HET	high efficiency textured lens, similar to Solite™	(0.92)				
	SBL	smoothing beam lens	(0.92)				
TRIM COLOR SEE PAGE 3	BK	black					
	WH	white					
	MC	matte chrome					
	BZ	bronze					
	WT	wheat					
Not applicable to trimless option. Do not include in trimless ordering code.							
BEZEL COLOR SEE PAGE 3	BK	black					
	WH	white					
	MC	matte chrome					
	BZ	bronze					
	WT	wheat					

## 15° - 55° BEAM ORDERING CODE

MOUNTING OPTIONS SEE PAGE 6	IC	insulation contact housing
	VOLTAGE	120 UNV 120V-277V
DIMMING	DIM10 ELV1	standard 0-10V dimming to 1% leading & trailing edge (Triac/ELV) dimming to 1%
ELECTRICAL OPTIONS	EM10CA20	remote emergency battery backup, 90 minutes at 10W to LED, CA title 20

## ADDITIONAL MOUNTING INFO

New Construction Bar Hangers (included)	Mounting Length: 14-3/4" to 26"
Extension Kit p/n: K20266 (ordered separately, 1 per fixture)	Extends a pair of Bar Hangers Total Mounting Length: 29" to 48"

## YOUR COMPLETED ORDERING CODE

Follow the steps to specify your fixture, example:
<b>NU4 - RALP - SW - 20LM - 35K - 90 - 35D - NA - HET - WH - WH - IC - 120 - ELV1</b>

## NOTES

- 15D available in 10LM/15LM. Not available with DL lens options.
- ELV1 (120V) not available in 10LM with 20D/25D/35D/50D optics.

# alphabet

PROJECT INFORMATION		
JOB NAME		TYPE
ORDERING CODE		

## TRIM OPTIONS

### TRIM/BEZEL COLORS



## OPTICAL OPTIONS

- UGR calculation based on CIE 117-1995; room size: 4H X 8H, reflectance: 70/50/20;
- UGR calculation based on 15LM fixtures, unless otherwise noted.



OPTIC	BEAM ANGLE	UGR
15D	13.7	≤5
20D	20.1	≤5
25D	25.5	≤5
35D	34.4	7.5
55D	52.9	14



OPTIC	BEAM ANGLE	UGR
20D	38.3	15.7
25D	41.5	17.2
35D	45	18.2
55D	57.8	20.9



OPTIC	BEAM ANGLE	UGR
20D	24.9	≤5
25D	28.7	8.8
35D	34	9.9
55D	51.6	15.7



OPTIC	BEAM ANGLE	UGR
15D	17	≤5
20D	21	≤5
25D	26.5	6.3
35D	33.3	8.1
55D	52.8	14.8

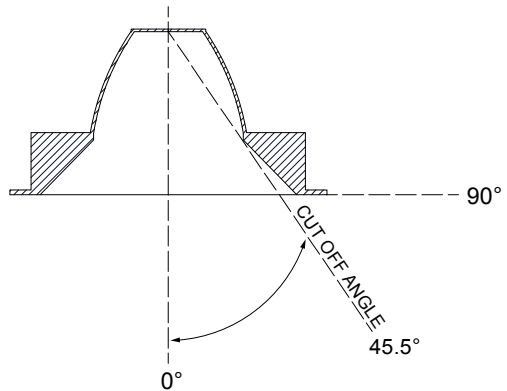
## GLARE CONTROL

### CUT-OFF ANGLE

Visual comfort is achieved with a lower cut-off angle due to improved glare control. The smaller the cut-off angle, the easier it is on the eye.

Alphabet downlights have been thoughtfully engineered to eliminate glare while still delivering functional illumination.

- Cutoff angle of CL is 45.5 degrees;



# alphabet

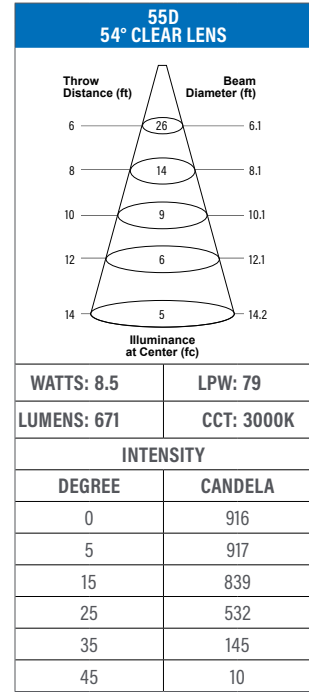
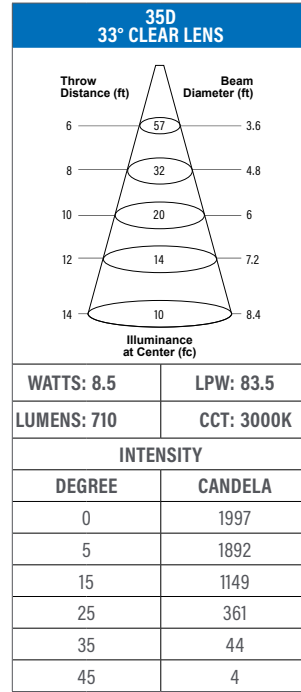
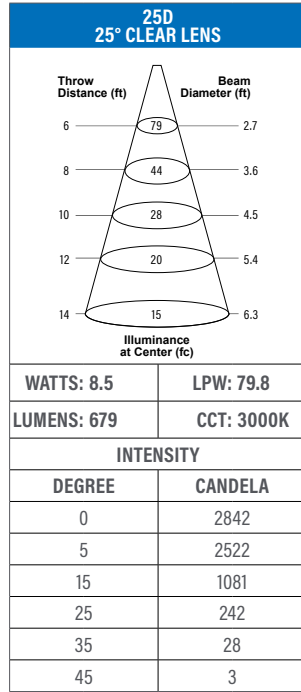
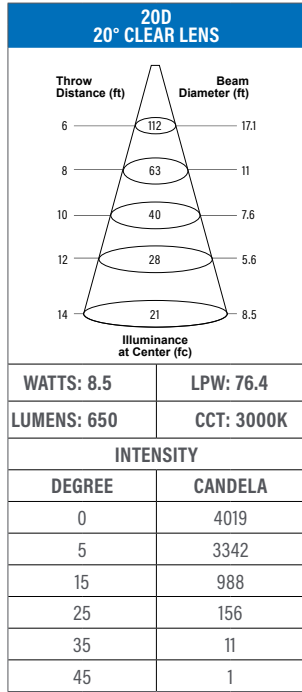
PROJECT INFORMATION		
JOB NAME		TYPE
ORDERING CODE		

## PHOTOMETRIC DATA

### 10LM CCT MULTIPLIERS

	90CRI
2700K	0.96
3000K	1
3500K	1.03
4000K	1.06

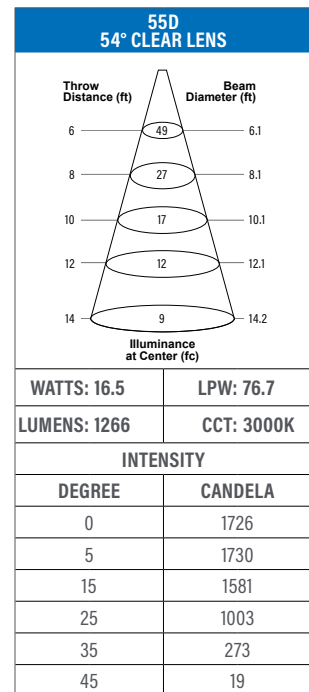
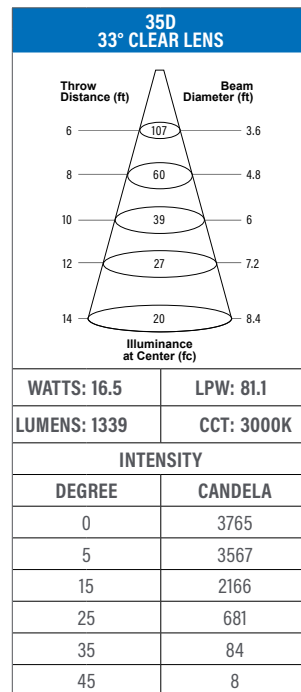
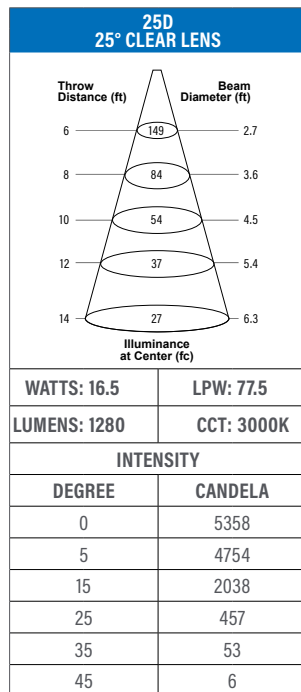
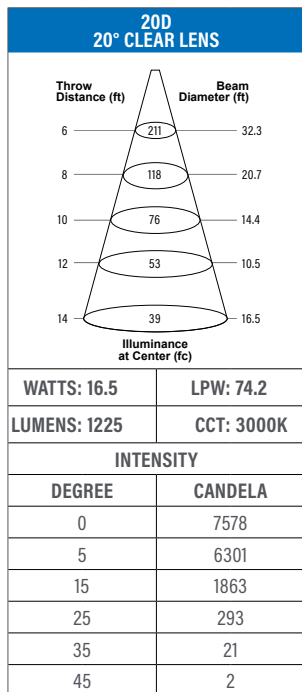
FC Formula = CBCP / Distance<sup>2</sup>



### 20LM CCT MULTIPLIERS

	90CRI
2700K	0.96
3000K	1
3500K	1.03
4000K	1.06

FC Formula = CBCP / Distance<sup>2</sup>



# alphabet

PROJECT INFORMATION		
JOB NAME		TYPE
ORDERING CODE		

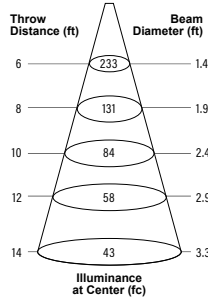
## PHOTOMETRIC DATA

### 10LM CCT MULTIPLIERS

	90CRI
2700K	0.96
3000K	1
3500K	1.03
4000K	1.06

FC Formula = CBCP / Distance<sup>2</sup>

### 15D 13.6° CLEAR LENS



WATTS: 11.5 | LPW: 60

LUMENS: 690 | CCT: 3000K

#### INTENSITY

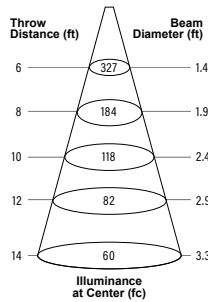
DEGREE	CANDELA
0	8378
5	5703
15	760
25	52
35	6
45	1

### 15LM CCT MULTIPLIERS

	90CRI
2700K	0.96
3000K	1
3500K	1.03
4000K	1.06

FC Formula = CBCP / Distance<sup>2</sup>

### 15D 13.6° CLEAR LENS



WATTS: 19 | LPW: 51.1

LUMENS: 971 | CCT: 3000K

#### INTENSITY

DEGREE	CANDELA
0	11789
5	8025
15	1069
25	74
35	9
45	1

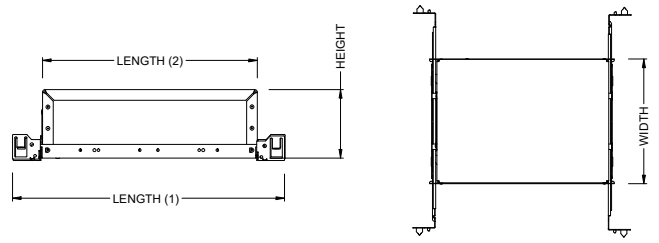
PROJECT INFORMATION			
JOB NAME		TYPE	
ORDERING CODE			

## MOUNTING OPTIONS

RATINGS / CERTIFICATIONS	IC
TYPE IC	✓
SUITABLE FOR AIR HANDLING PLENUMS	✓
REDUCED AIRFLOW (WITH LENS) ASTM E283	✓

CEILING THICKNESS	
FIXTURE TYPE	MOUNTING TYPE
	STANDARD CEILING THICKNESS
TRIM	0.5" to 1.1"
TRIMLESS	0.5" to 1.1"
MILLWORK (TRIMLESS)	0.5" to 1.1"

## IC - INSULATION CONTACT HOUSING



BOX SIZE	L 1	L 2	W	H
A	15 - 7/16"	11 - 3/4"	8 - 1/2"	3 - 3/4"

PROJECT INFORMATION		
JOB NAME		TYPE
ORDERING CODE		

## BATTERY OPTIONS

### EMERGENCY BATTERY

IOTA's ILB Battery Backups are UL Listed LED emergency drivers that allow the same LED fixture to be used for both normal and emergency operation. In the event of a power failure, the ILB switches to the emergency mode and operates the existing fixture for 90 minutes. The unit contains a battery, charger, and converter circuit in a single can. The Constant Power design of the ILB maintains the output wattage to the LED array even as the system voltage diminishes. UL 924 Listed for U.S. and Canada. UL 1310 Certified, Output Class 2 Compliant. Includes single-piece TBTS test switch and charge indicator accessory kit. For use with switched and unswitched fixtures, and includes Two-wire universal AC input. Meets or exceeds all National Electric Code and Life Safety Code Emergency Lighting Requirements. Rated for use in Plenum, Damp Location, Recessed Type IC, and Enclosed and Gasketed Luminares.

### REMOTE TEST SWITCH

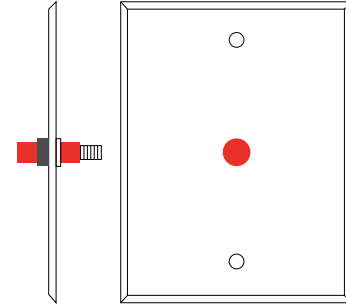
The Remote Test Switch may be mounted adjacent to the LED Fixture by others.

### EMERGENCY BATTERY ACCESS

Above ceiling access is required for service. An access panel in the ceiling (or other form of access) adjacent to the installation location of the Emergency Battery is required.

### REMOTE LOCATION

Maximum remote mounting distance of the emergency driver shall be 50 feet. Remote location wiring provided by others. Follow all Local and National Electric/Building Codes.



Remote Test Switch

EM MODE OUTPUT (DELIVERED LUMENS)			
LUMEN ORDERING CODE	EM7	EM10	EM12
ALL OPTIONS (10LM TO 30LM)	880LM	1280LM	1480LM
Notes: Based on 30K, 80CRI			

## IC - INSULATION CONTACT HOUSING WITH EM BATTERY (REMOTE TEST SWITCH)

