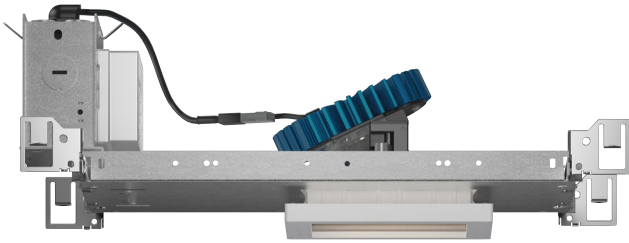


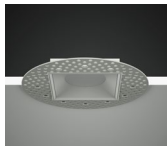
PROJECT INFORMATION		
JOB NAME		TYPE
ORDERING CODE		

## NU4

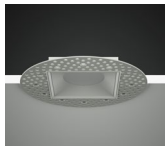
### 4" Square Wall Wash Tamper Resistant Standard White



WW BEAM		
(Note: Specifications are subject to change without notice)		
14mm COB PERFORMANCE DATA		
LED LIGHT ENGINE	NOMINAL DELIVERED LUMENS	SYSTEM WATTAGE
10LM	830LM @30K/80CRI	8W
15LM	1250LM @30K/80CRI	12W
20LM	1705LM @30K/80CRI	16W
25LM	2075LM @30K/80CRI	20W
30LM	2580LM @30K/80CRI	26W
35LM	2620LM @30K/80CRI	27W
40LM	3185LM @30K/80CRI	32W
10LM	700LM @30K/90/CRI	8W
15LM	1050LM @30K/90/CRI	12W
20LM	1440LM @30K/90/CRI	16W
25LM	1750LM @30K/90/CRI	20W
30LM	2180LM @30K/90/CRI	26W
35LM	2210LM @30K/90/CRI	27W
40LM	2700LM @30K/90/CRI	32W
Notes	Delivered lumens based on WW optic with no lens, (see page 2)	



Trim



Trimless



Trimless Millwork



#### FEATURES

- Designed to meet NYS-OMH rigorous requirements
- Spun aluminum frame with stainless steel tamper resistant screws
- Polycarbonate (3mm) shatter proof lensing
- UGR <18
- Antimicrobial (Microban<sup>®</sup>) painted finishes

#### DIMMING AND CONTROLS

- eldoLED flicker free 0-10V dimming to 0% and 1%
- eldoLED flicker free DALI dimming to 0% and 1%
- DMX dim to zero
- Lutron Hi-lumen 2-Wire (Eco System) dimming to 0.1% and 1%
- Leading & trailing edge (Triac/ELV) dimming to 1%
- Casambi bluetooth dimming to 1%
- NLight control interface dimming to 0%

#### CONSTRUCTION

- Aluminum 6061 lensing frame
- 18-8 stainless steel tamper resistant screws
- Shatter resistant Polycarbonate (PC) lensing
- Electrocoated 16-gauge cold rolled steel construction
- Accommodates ceiling thickness from 1/8" to 1-5/8"

#### LED

- 90 CRI: SDCM = 2-step MacAdam Ellipse, Lumen Maintenance: L<sub>70</sub> > 66,000 hrs
- 80 CRI: SDCM = 2-step MacAdam Ellipse, Lumen Maintenance: L<sub>70</sub> > 66,000 hrs

#### LISTING

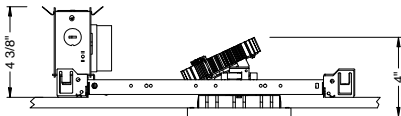
- ULus Listed to UL1598 & UL2108; cUL Listed to CSA C22.2 #250.0
- IP65 with lens - Suitable for wet locations
- Non-conductive, dead-front construction (shower approved)
- NSF/ANSI-2 with lens (Non-Food and Splash Zones)
- NYSOMH - New York State Office of Mental Health compliant
- 5 Year Limited warranty

#### ELECTRICAL

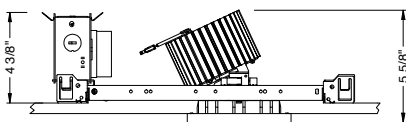
- 120V-277V, 120 only Triac / ELV
- Power factory ≥ 0.9
- 2kV driver input surge protection
- Remote emergency test switch
- 7W, 10W (T20 CEC) and 12W EM 90min battery
- Max. ambient installation temperature 95°F (35°C)

#### FIXTURE HEIGHT

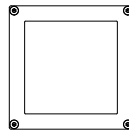
LED LIGHT ENGINE: 10LM - 30LM



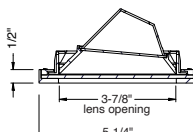
LED LIGHT ENGINE: 35LM - 40LM



#### TAMPER RESISTANT



ceiling cutout  
4-1/4" square  
ceiling thickness  
1/8" to 1-5/8"



# alphabet

PROJECT INFORMATION		
JOB NAME		TYPE
ORDERING CODE		

WW BEAM ORDERING CODE		
<b>SERIES</b>	NU4	NU4
<b>TYPE</b>	QWTR	square wall wash tamper resistant
<b>LED</b>	SW	standard white
<b>DELIVERED LUMENS</b>	10LM	830 lm
	15LM	1250 lm
	20LM	1705 lm
	25LM	2075 lm
	30LM	2580 lm
	35LM	2815 lm
	40LM	3185 lm
	Standard Configuration: 3000K 80CRI WW	
Calculated Delivered Lumens = [Delivered Lumen Value] x [CCT Multiplier] x [Reflector Multiplier]		
<b>CCT</b>	27K	2700K
	30K	3000K
	35K	3500K
	40K	4000K
	CCT MULTIPLIER FOR LUMEN OUTPUT	
<b>CRI</b>	80	80 CRI
	90	90 CRI
<b>OPTIC &amp; LM MULTIPLIER</b> SEE PAGE 3	WW	wall wash
<b>TRIM COLOR</b>	BK	black
	WH	white
	MC	matte chrome
Includes shatter proof lens and tamper resistant screws.		
Antimicrobial finish, add <b>AM</b> to black, white or matte chrome i.e. BKAM.		
<b>BEZEL COLOR</b>	BK	black (0.98)
	WH	white (1.00)
	MC	matte chrome (0.99)
Antimicrobial finish, add <b>AM</b> to black, white or matte chrome i.e. BKAM.		

WW BEAM ORDERING CODE		
<b>MOUNTING OPTIONS</b> SEE PAGE 3	NC	new construction with ceiling fitting plate
	RET	retrofit, no ceiling fitting plate
<b>VOLTAGE</b>	120	120V
	UNV	120V-277V
<b>DIMMING</b>	DIM10	eldoLED flicker free 0-10V dimming to 1%
	DIM10Z	eldoLED flicker free 0-10V dimming to 0%
	DALI	eldoLED flicker free DALI 2 dimming to 1%
	DALIZ	eldoLED flicker free DALI 2 dimming to 0%
	DMXZ	DMX dim to zero
	LUT	Lutron Hi-lume Ecosystem dimming to 1%, Soft-on & Fade-to-Black
	LUTP <sup>1</sup>	Lutron Hi-lume Premier Ecosystem dimming to 0.1%, Soft-on & Fade-to-Black
<b>ELECTRICAL OPTIONS</b>	ELV1 <sup>2</sup>	leading & trailing edge (Triac/ELV) dimming to 1%
	NLT	nLight control interface: standard Cat-5/RJ45 connection (female), dim to off
	CAS	Casambi Bluetooth control with flicker free 1% dimming
	EM7	emergency battery backup, 90 minutes at 7W to LED
EM12	emergency battery backup, 90 minutes at 12W to LED	
EM10CA20	remote emergency battery backup, 90 minutes at 10W to LED, CA title 20	

ADDITIONAL MOUNTING INFO	
New Construction Bar Hangers (included)	Mounting Length: 14-3/4" to 26"
Extension Kit p/n: K20266 (ordered separately, 1 per fixture)	Extends a pair of Bar Hangers Total Mounting Length: 29" to 48"

YOUR COMPLETED ORDERING CODE
Follow the steps to specify your fixture, example:
<b>NU4 - QWTR - SW - 20LM - 35K - 90 - WW - WH - WH - NC - UNV - DIM10 - EM7</b>

## NOTES

- LUTP not available in 25LM/30LM/40LM.
- ELV1 (120V) not available in 10LM.

\* EldoLED driver uses logarithmic dimming curve as standard. For linear dimming curve add "LIN" after dimming code, i.e. DIM10LIN.

## TRIM OPTIONS

### TRIM COLORS



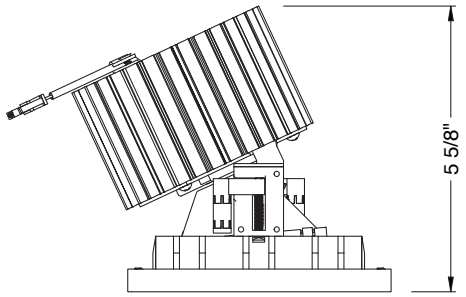
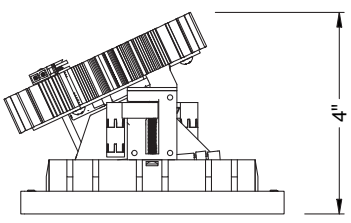
PROJECT INFORMATION		
JOB NAME		TYPE
ORDERING CODE		

## MOUNTING OPTIONS

### FIXTURE HEIGHT

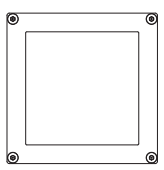
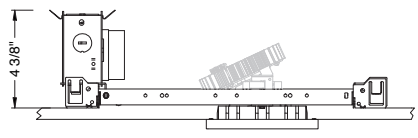
10LM-30LM CONFIGURATIONS

35LM-40LM CONFIGURATIONS

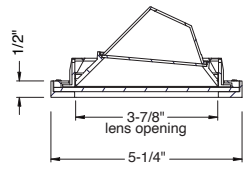
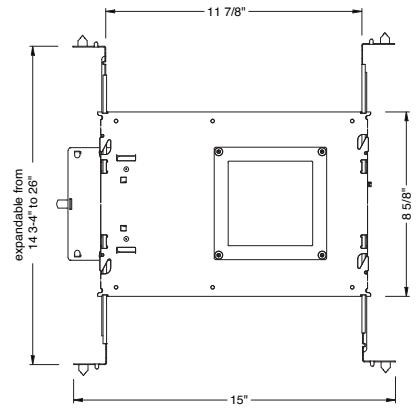


### NC - NEW CONSTRUCTION

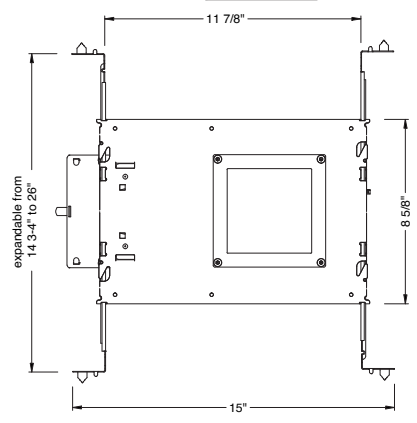
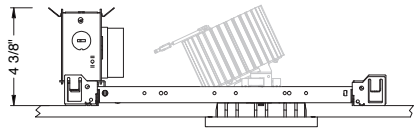
LED LIGHT ENGINE: 10LM - 30LM



ceiling cutout  
4-1/4" square  
ceiling thickness  
1/8" to 1-5/8 "



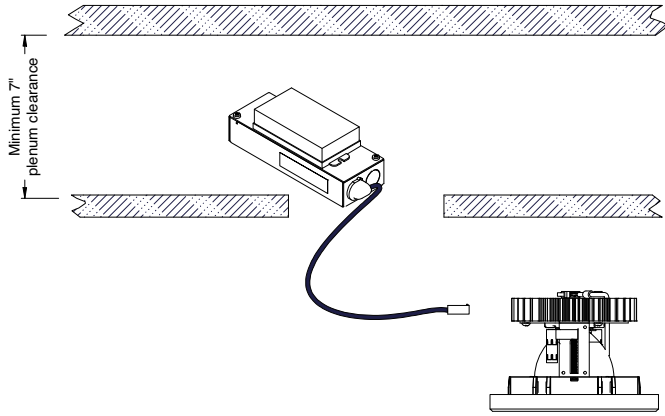
LED LIGHT ENGINE: 35LM - 40LM



PROJECT INFORMATION		
JOB NAME	TYPE	
ORDERING CODE		

## MOUNTING OPTIONS (CONTINUED)

### RET - RETRO TRIM/TRIMLESS



RATINGS / CERTIFICATIONS	NC	RET
TYPE NON-IC	✓	✓
TYPE IC		
CHICAGO PLENUM (CECA)		
SUITABLE FOR AIR HANDLING PLENUMS	✓	✓
REDUCED AIRFLOW (WITH LENS) ASTM E283	✓	✓

CEILING THICKNESS	
FIXTURE TYPE	MOUNTING TYPE
	STANDARD CEILING THICKNESS
TRIM	1/8" to 1-1/4"
TRIMLESS	3/8" to 1-3/4"
MILLWORK (TRIMLESS)	5/8" to 1-3/4"

PROJECT INFORMATION		
JOB NAME		TYPE
ORDERING CODE		

## BATTERY OPTIONS

### EMERGENCY BATTERY

IOTA's ILB Battery Backups are UL Listed LED emergency drivers that allow the same LED fixture to be used for both normal and emergency operation. In the event of a power failure, the ILB switches to the emergency mode and operates the existing fixture for 90 minutes. The unit contains a battery, charger, and converter circuit in a single can. The Constant Power design of the ILB maintains the output wattage to the LED array even as the system voltage diminishes. UL 924 Listed for U.S. and Canada. UL 1310 Certified, Output Class 2 Compliant. Includes single-piece TBTS test switch and charge indicator accessory kit. For use with switched and unswitched fixtures, and includes Two-wire universal AC input. Meets or exceeds all National Electric Code and Life Safety Code Emergency Lighting Requirements. Rated for use in Plenum, Damp Location, Recessed Type IC, and Enclosed and Gasketed Luminaires.

### REMOTE TEST SWITCH

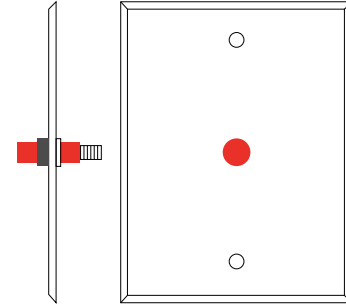
The Remote Test Switch may be mounted adjacent to the LED Fixture by others.

### EMERGENCY BATTERY ACCESS

Above ceiling access is required for service. An access panel in the ceiling (or other form of access) adjacent to the installation location of the Emergency Battery is required.

### REMOTE LOCATION

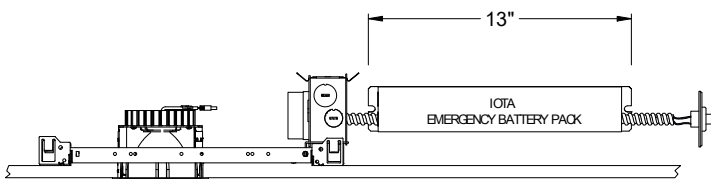
Maximum remote mounting distance of the emergency driver shall be 50 feet. Remote location wiring provided by others. Follow all Local and National Electric/Building Codes.



Remote Test Switch

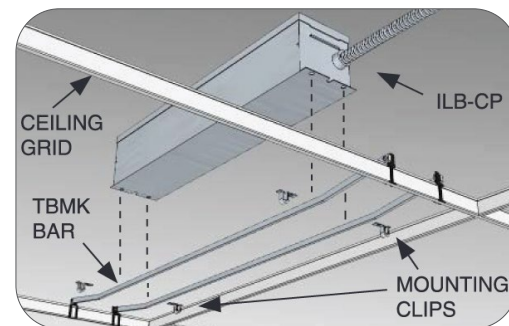
EM MODE OUTPUT (DELIVERED LUMENS)			
LUMEN ORDERING CODE	EM7	EM10	EM12
ALL OPTIONS (10LM TO 40LM)	725LM	1040LM	1250LM
Notes: Based on 30K, 80CRI			

## NC - NEW CONSTRUCTION WITH EM BATTERY (REMOTE TEST SWITCH)



### Accessory

76066 Optional T-Grid Mounting Kit<sup>1</sup>



1. Can be used with any of the Emergency Battery Backups. Must be ordered as a separate line item.