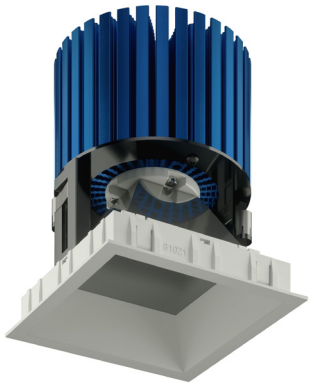


## NU4

### 4" Square Downlight Warm Dim



Trim



Trimless



Trimless Millwork

#### DESCRIPTION

The NU4QD-WD 4" recessed downlight by ALPHABET offers economical and efficient dim-to-warm LED technology from Luminus, premium performance, thoughtful construction, and pleasing aesthetics. Offered standard with premium dimming using EldoLED 1% flicker free drivers 120V-277V universal voltage. Several beam angles available, plus an optional high-efficiency BrightView diffused lens for smooth light distribution and obscured LED image.

For the trim version, a minimalistic look is achieved with an ultrathin 1/16" trim that is only 5/16" wide. Color choices of both trim and bezel are offered for a customized look. For the trimless version, a perforated, mud up, regressed trim assembly provides for clean, trim free installation. Perforated mud frame's integrated lip helps guide the joint compound creating a sharp and clean opening.

#### HOUSING

Electrocoated 16-gauge cold-rolled steel provides enhanced structural reinforcement and rust prevention. Superior, UL-certified, injection-molded commercial-grade Lexan™ (PC) is used for the frame and regressed bezel trim. Lexan provides unmatched durability and impact resistance, and is tested for UV resistance and water exposure in outdoor applications. The thermally-advanced, anodized heat sink uses 6063 aluminum alloy. Wet location rated is offered standard. A 90-minute constant-power IOTA emergency battery backup is available.

#### MOUNTING

An advanced mounting system allows for quick and secure installation with LED and driver serviceability from below the ceiling. The LED assembly uses die-cast aluminum mounting clamp grips (MCG) that swing out to tighten onto variable ceiling thicknesses. Integrated rubber feet on each MCG provide a non-slip vibration-resistant installation. The hidden MCG system is accessible from below ceiling by removing the snap-in lens/bezel assembly with either the included suction cup or a screwdriver blade. Integrated bar hangers feature integral toothed nails, T-bar mounting slots with locking holes, tabs for joist positioning. Retrofit mounting option allows for installation from below ceiling by use of compact driver box. No risk damaging LED or bezel assembly during installation, these are installed during last steps. Fixture and driver are easily removed for servicing after install without damaging drywall.

MOUNTING DIMENSIONS	CEILING THICKNESS	CEILING CUTOUT
Trim	1/8" to 1-5/8"	4-1/4" square
Trimless	3/8" to 1-3/4"	4-1/2" square
Millwork (Trimless)	5/8" to 1-3/4"	4-1/4" square

New Construction Bar Hangers (included)	Mounting Length: 14-3/4" to 26"
Extension Kit p/n: K20266 (ordered separately, 1 per fixture)	<i>Extends a pair of Bar Hangers</i> Total Mounting Length: 29" to 48"

#### LISTINGS

- ETLus Listed to UL1598, cETL Listed to CSA C22.2 #250.0
- IP65 with lens - Suitable for wet locations with lens - Suitable for damp locations without lens
- Non-conductive, Lexan dead-front construction
- **Declare.** - LBC Red List Approved

RATINGS / CERTIFICATIONS	NC	RET	IC	ICAT	CP
Type non-IC	✓	✓			
Type IC			✓	✓	✓
Chicago Plenum (CCEA)					✓
Suitable for air handling plenums				✓	✓
Reduced airflow (with lens) ASTM E283	✓	✓	✓	✓	✓

#### LED INFO

- Seoul Semiconductor SunLike Acrich MJT COB:
- 97 CRI: SDCM = 3-step MacAdam Ellipse; Lumen Maintenance: L<sub>70</sub> > 49,500 hrs

PROJECT INFORMATION		
JOB NAME		TYPE
ORDERING CODE		

#### ORDERING CODE

SERIES	NU4	
TYPE	QD QDT QDTMW	square downlight square downlight trimless square downlight trimless millwork
LED	WD	warm dim (Luminus)
DELIVERED LUMENS	10LM 13LM 20LM 30LM	900 lm 1200 lm 1865 lm 2820 lm
CCT	3018	3000K, dim to 1800K
CRI	97	97 CRI
REFLECTOR & LM MULTIPLIER	HE65 HE75 HE85 D70 WH85	65° high efficiency diffused lens (0.89) 75° high efficiency diffused lens (0.87) 85° high efficiency diffused lens (0.95) 70° diffused with clear lens (0.91) 85° brilliant white with clear lens (1.00)
VOLTAGE	120 UNV	120V 120V-277V
DIMMING	DIM10 DIM10Z DALI DALIZ DMXZ LUT ELV <sup>2</sup> ELV1 <sup>2</sup>	eldoLED flicker free 0-10V dimming to 1% eldoLED flicker free 0-10V dimming to 0% eldoLED flicker free DALI-2 dimming to 1% eldoLED flicker free DALI-2 dimming to 0% DMX dim to zero Lutron Hi-lume Ecosystem dimming to 1%, Soft-on & Fade-to-Black leading & trailing edge (Triac/ELV) dimming to < 10% leading & trailing edge (Triac/ELV) dimming to 1%
MOUNTING OPTIONS	NC IC <sup>1</sup> ICAT <sup>1</sup> CP <sup>1</sup> RET	new construction with ceiling fitting plate insulation contact housing insulation contact/airtight housing chicago plenum housing retrofit, no ceiling fitting plate
TRIM COLOR	BK WH MC BZ WT	black white matte chrome bronze wheat Not applicable to trimless option. Do not include in trimless ordering code.
BEZEL COLOR	BK WH MC BZ WT	black white matte chrome bronze wheat
ELECTRICAL OPTIONS	EM7 <sup>3</sup> EM12 <sup>3</sup>	emergency battery backup, 90 minutes at 7W to LED emergency battery backup, 90 minutes at 12W to LED

#### ORDERING CODE

Follow the steps to specify your fixture, example:

**NU4 - QD - WD - 13LM - 3018 - 97 - HE85 - 120 - DIM10 - NC - WH - WH - EM7**

LUMINUS (LED)		POWER	CCT AT LIGHT LEVEL (%LF) <sup>4</sup>				
DELIVERED LM		W (97CRI)	%LF	30LM	20LM	13LM	10LM
900		13	100%	3000	3000	3000	3000
1200		17	50%	3000	3000	3000	2800
1865		27	25%	2800	2800	2500	2300
2820		40	10%	2200	2200	2000	1900
			5%	1800	1800	1800	1800

Power Factor ≥ 0.9

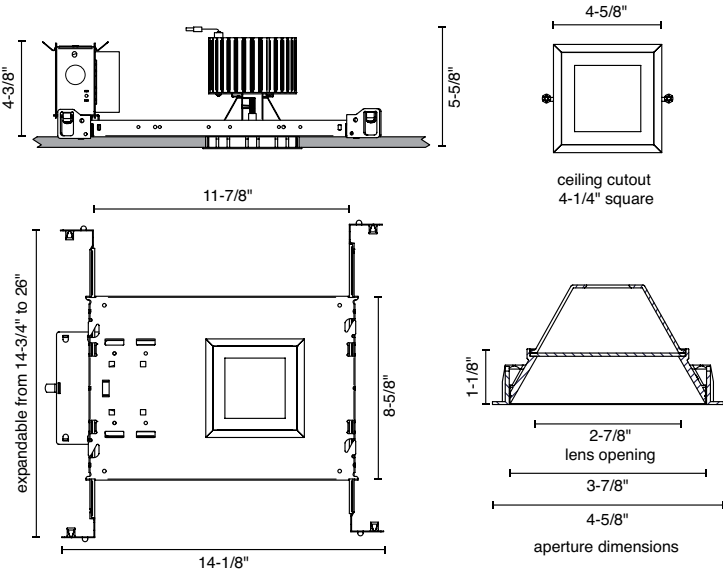
#### NOTES

1. IC/ICAT/CP not available for 30LM.
2. Triac/ELV dimming available in 120V only. Not available in 30LM.
3. For integrated test switch add "ITS" after emergency backup code, i.e. EM12ITS. Test switch is mounted in the bezel of the fixture.
4. Values shown are for reference only. Actual CCT may vary.

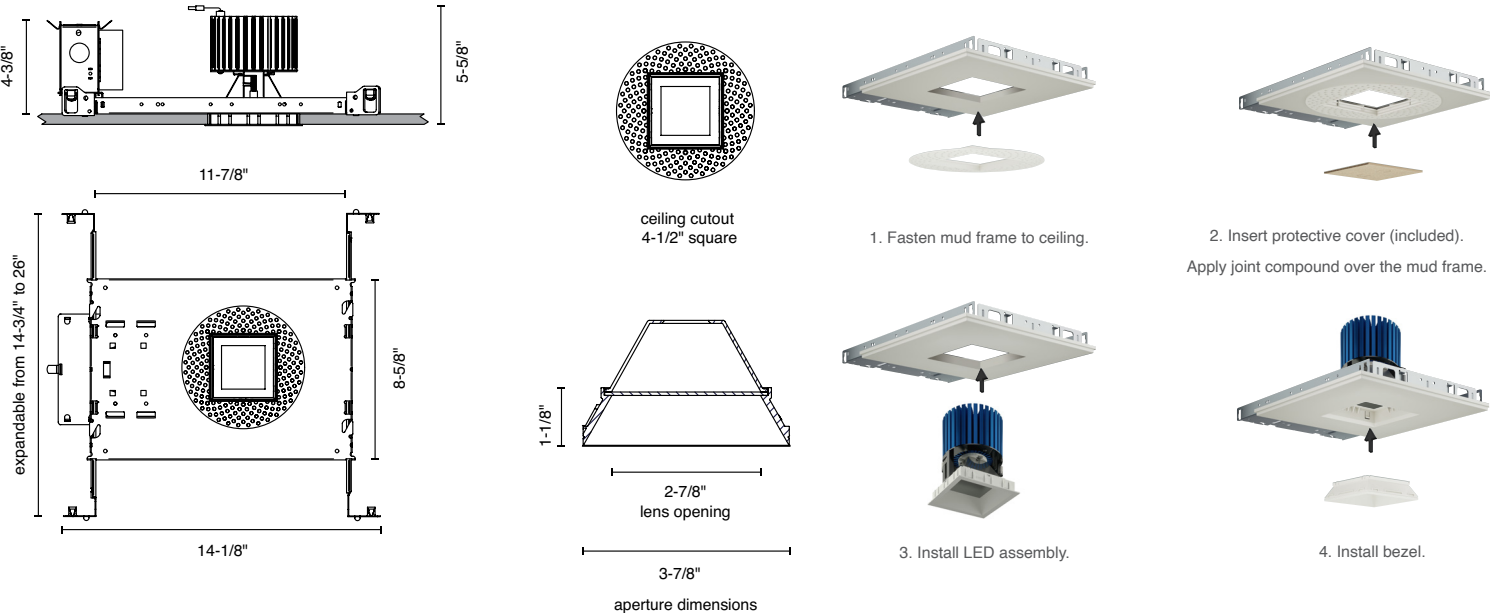
PROJECT INFORMATION			
JOB NAME		TYPE	
ORDERING CODE			

## MOUNTING OPTIONS

### NC - NEW CONSTRUCTION TRIM



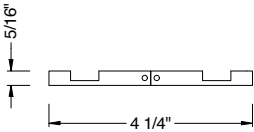
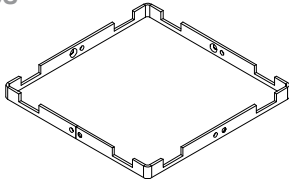
### NC - NEW CONSTRUCTION TRIMLESS



PROJECT INFORMATION			
JOB NAME		TYPE	
ORDERING CODE			

## MOUNTING OPTIONS (CONTINUED)

### QDTMW – MILLWORK TRIMLESS



Millwork Mounting Bracket

- NOTES**
- 1 Ceiling cutout 4-1/4" x 4-1/4".
  - 2 Millwork Mounting Bracket & Mounting Screws are included with each Luminaire.
  - 3 One Plastic Spacer and two C-Clamps are included with each order.
  - 4 Refer to Installation Instructions for further details.



1. Insert Millwork Mounting Bracket using the included Plastic Spacer for proper depth positioning.



2. Use the included C-Clamps to temporarily hold the Plastic Spacer in position. Fasten the included wood screws into the Mounting Bracket using a right-angle impact driver (supplied by others).



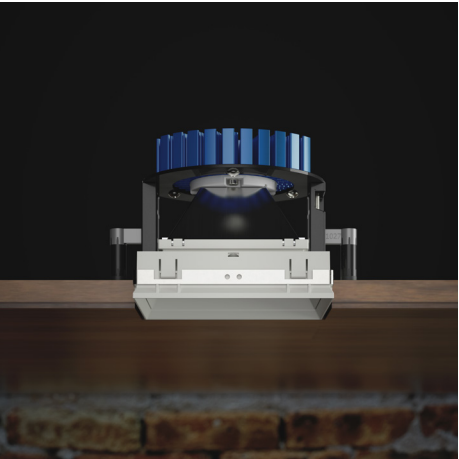
3. Remove Plastic Spacer.



4. Install Luminaire.



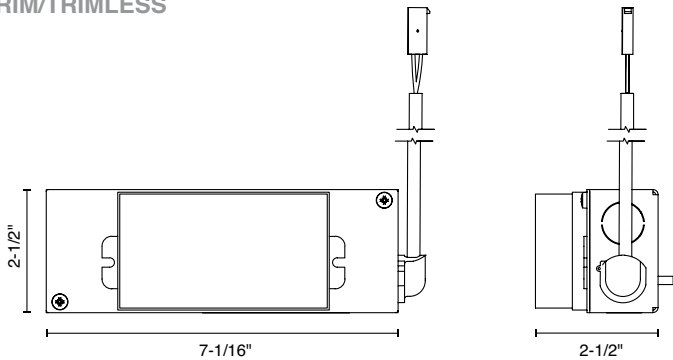
5. Insert Bezel to finish the installation.



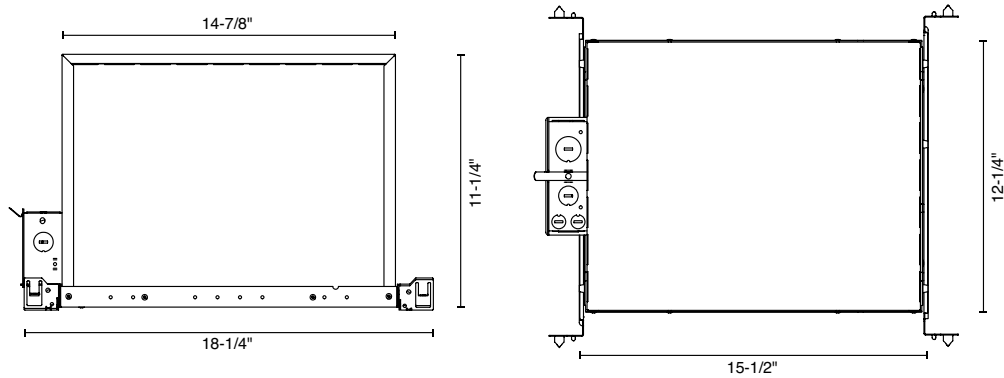
PROJECT INFORMATION			
JOB NAME		TYPE	
ORDERING CODE			

## MOUNTING OPTIONS (CONTINUED)

### RET - RETROFIT TRIM/TRIMLESS



### IC - INSULATION CONTACT HOUSING TRIM/TRIMLESS



### CP - CHICAGO PLENUM ICAT - INSULATION CONTACT / AIR TIGHT TRIM/TRIMLESS

