

Light efficiency:

100 Lumen/Watt

Light quality:

CRI: 82.4

Color temperature:

2971 K

Output: 3660 lm

Peak: 7757 cd

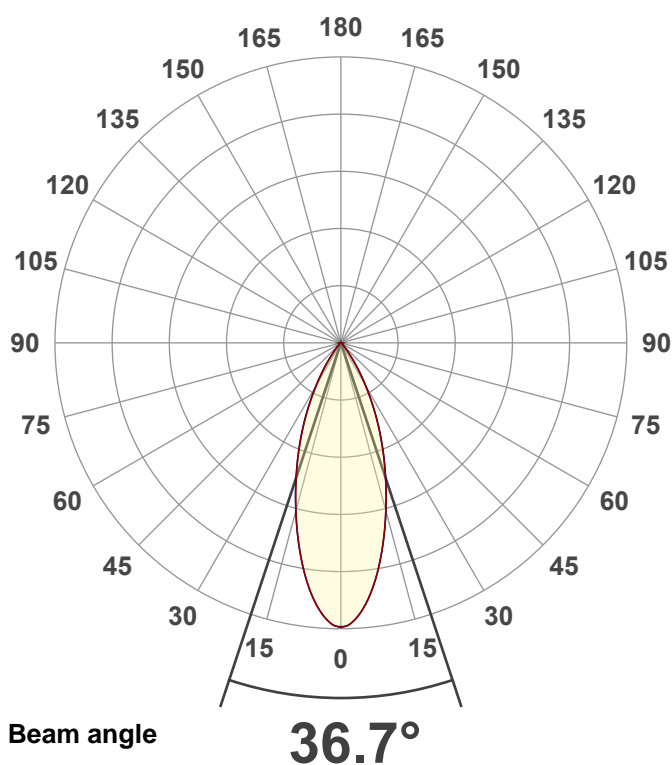
Power: 36.5 W

PF: 0.98



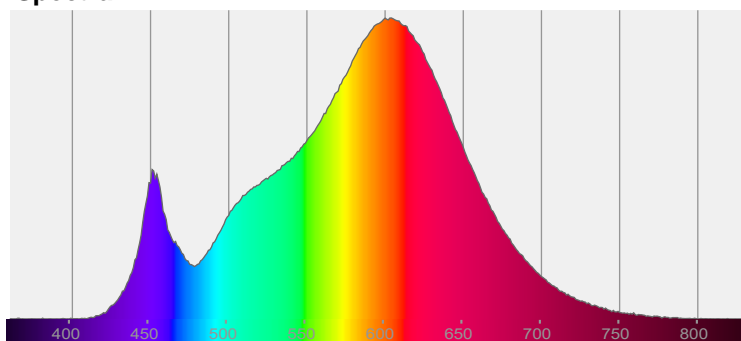
NU4-SD-SW-40LM-30K-80-35D-NA-NL-WH-WH

Date and time:
11/25/2024 11:27:04 AM

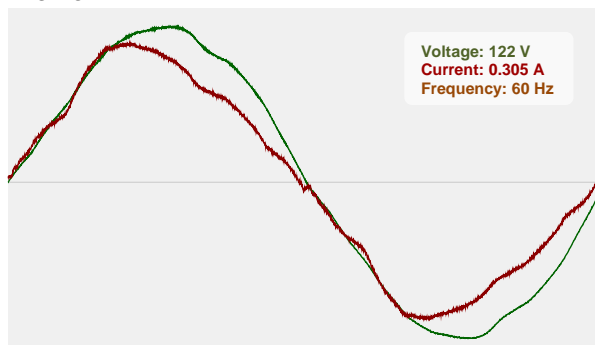


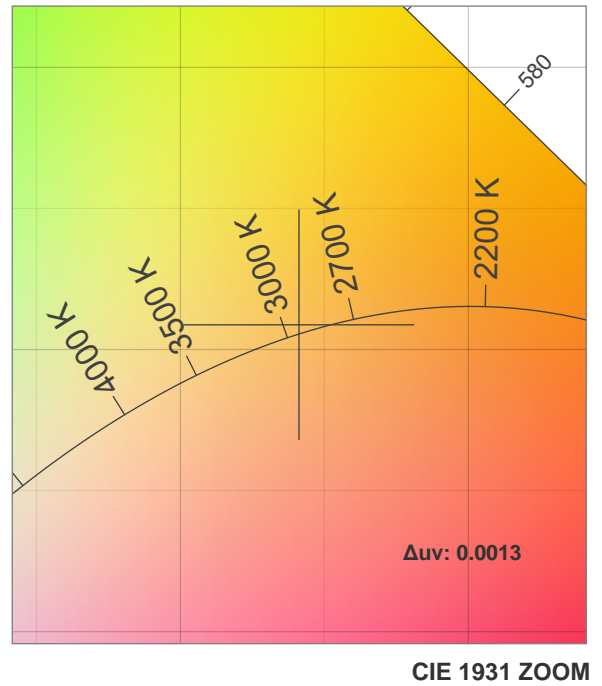
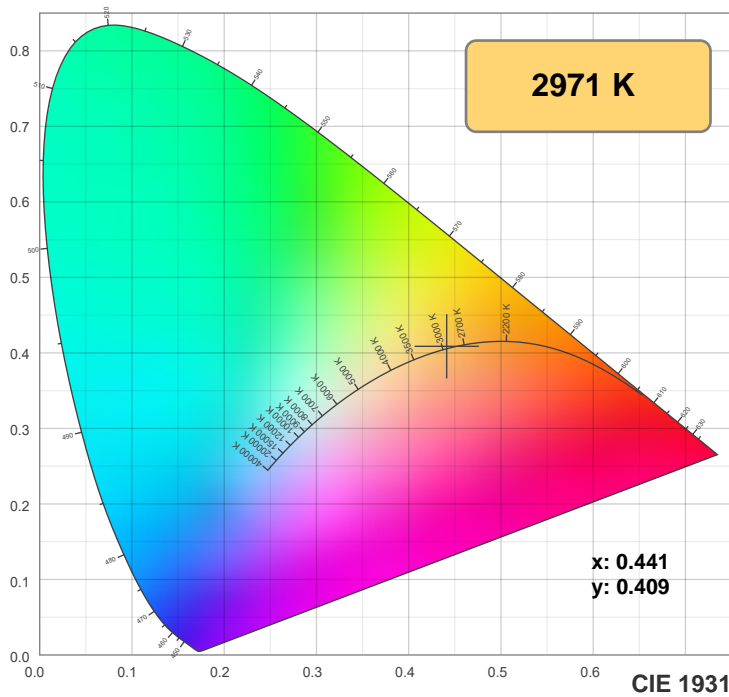
CIE 1931
x: 0.441
y: 0.409

Spectra

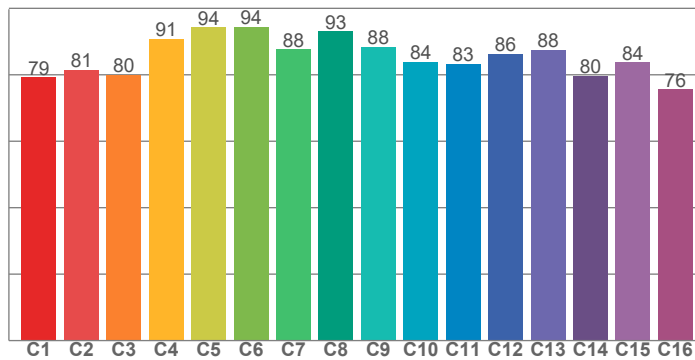


Power

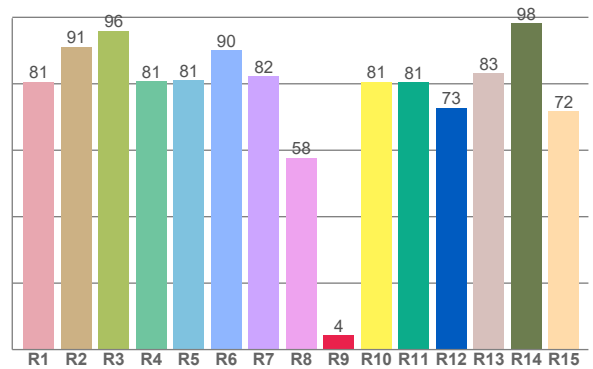




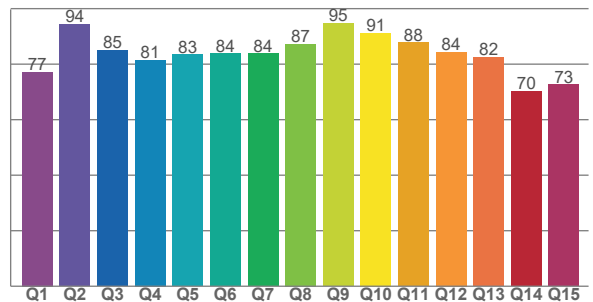
TM30: 85.4



CRI: 82.4 (R1-R8)



CQS: 82.5



CRI R values, only R1-R8 are used to calculate final CRI value

R1	R2	R3	R4	R5	R6	R7	R8	R9	R10	R11	R12	R13	R14	R15
80.6	91.2	95.9	80.7	81.0	90.0	82.3	57.7	4.4	80.6	80.6	72.8	83.2	98.3	71.8

TM30 C values, 16 binned values out of total of 99 C values

C1	C2	C3	C4	C5	C6	C7	C8	C9	C10	C11	C12	C13	C14	C15	C16
79.3	81.4	80.0	90.8	94.3	94.4	87.7	93.0	88.4	83.9	83.4	86.3	87.5	79.7	83.7	75.6

CQS Q values

Q1	Q2	Q3	Q4	Q5	Q6	Q7	Q8	Q9	Q10	Q11	Q12	Q13	Q14	Q15
77.1	94.3	85.0	81.5	83.4	83.9	83.9	87.2	94.7	91.1	87.7	84.4	82.5	70.2	72.6

Color parameters

Color temperature	Color rendering index	Red component	Color fidelity	Color gamut	Color quality scale	Color coordinate cie 1931	Color coordinate cie 1931	Color coordinate	Color coordinate	Color deviation from black body
CCT	CRI	CRI R9	TM30 Rf	TM30 Rg	CQS	x	y	u	v	Δuv
2971 K	82.4	4.4	85.4	94.6	82.5	0.441	0.409	0.251	0.349	0.0013

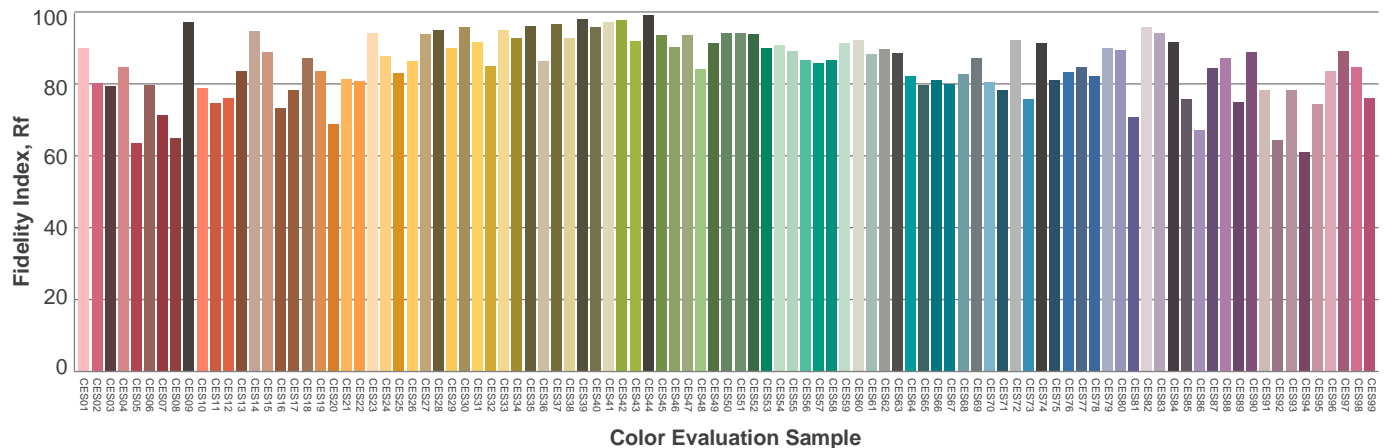
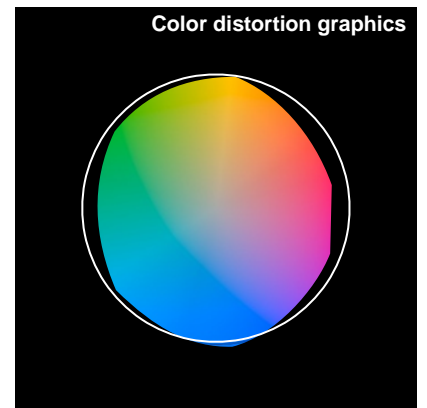
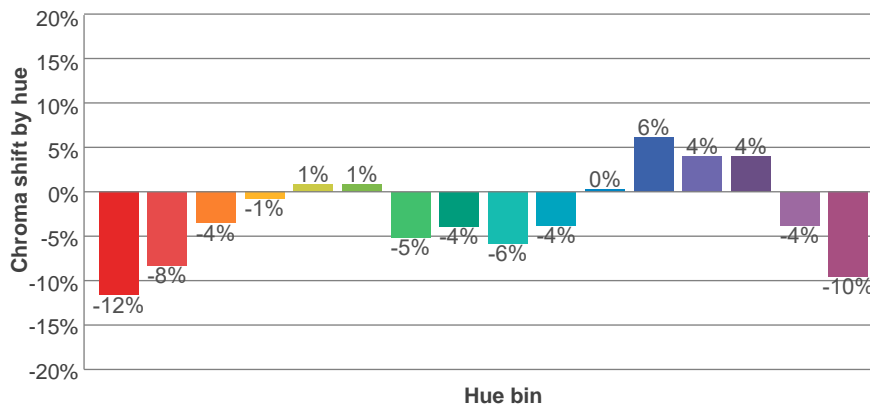
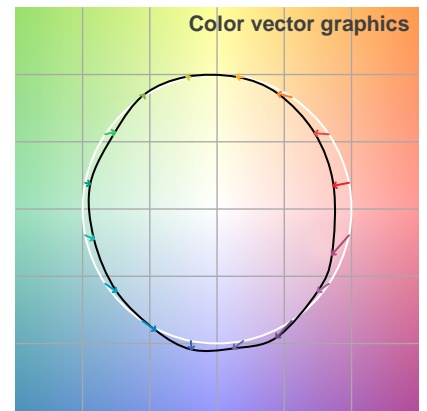
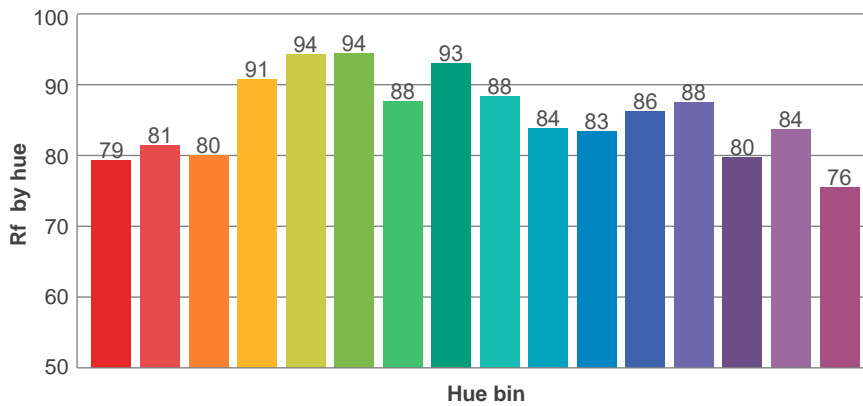
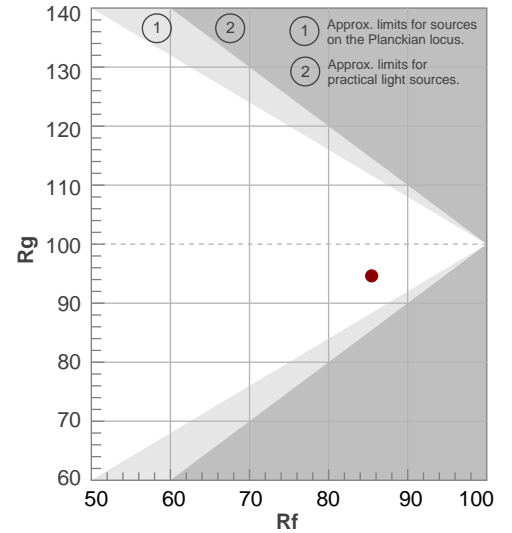
Rf 85.4

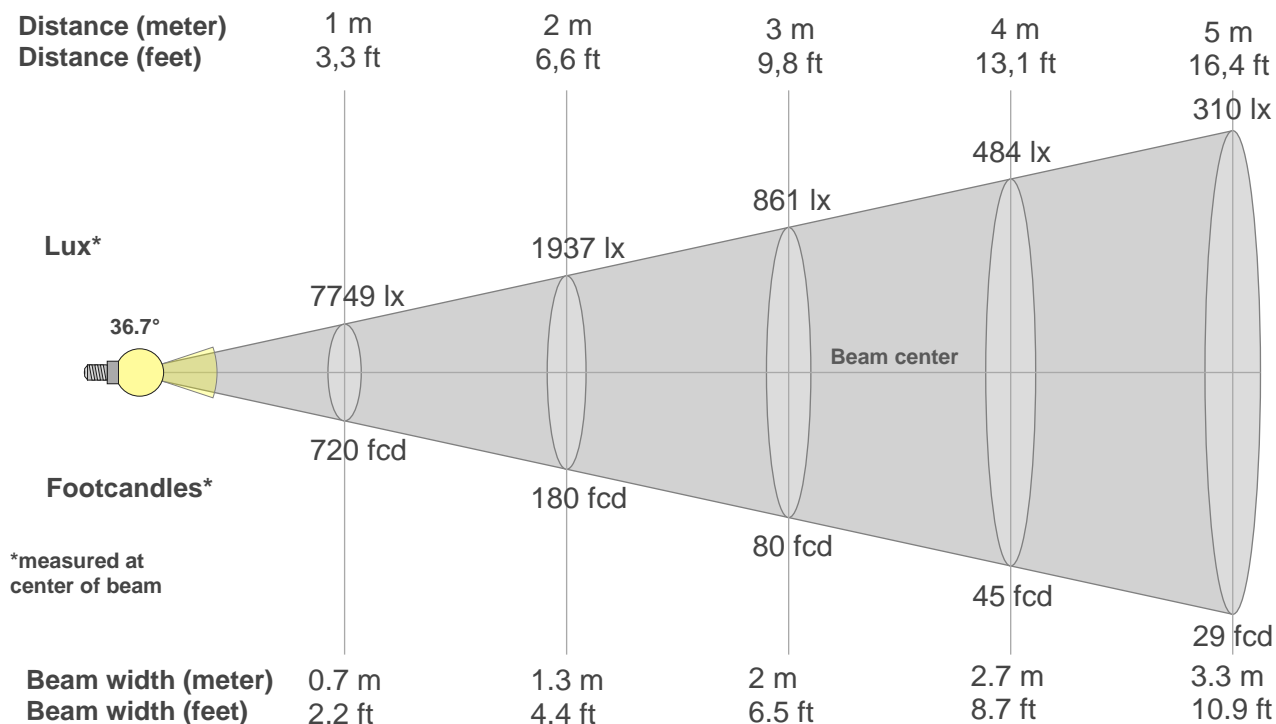
Fidelity index Rf

Rg 94.6

Gamut index Rg

Hue Bin	R _f	Graphic shifts (%)	
		Chroma	Hue
1	79	-12%	0%
2	81	-8%	7%
3	80	-4%	10%
4	91	-1%	5%
5	94	1%	3%
6	94	1%	-2%
7	88	-5%	-6%
8	93	-4%	0%
9	88	-6%	4%
10	84	-4%	9%
11	83	0%	12%
12	86	6%	2%
13	88	4%	-8%
14	80	4%	-16%
15	84	-4%	-9%
16	76	-10%	-17%





Beam intensities from 1-20m

1m	2m	3m	4m	5m	6m	7m	8m	9m	10m	11m	12m	13m	14m	15m	16m	17m	18m	19m	20m
3.3ft	6.6ft	9.8ft	13.1ft	16.4ft	19.7ft	23ft	26.2ft	29.5ft	32.8ft	36.1ft	39.4ft	42.7ft	45.9ft	49.2ft	52.5ft	55.8ft	59.1ft	62.3ft	65.6ft
7749lx	1937lx	861lx	484lx	310lx	215lx	158lx	121lx	96lx	77lx	64lx	54lx	46lx	40lx	34lx	30lx	27lx	24lx	21lx	19lx
719.9fcd	180fcd	80fcd	45fcd	28.8fcd	20fcd	14.7fcd	11.2fcd	8.9fcd	7.2fcd	5.9fcd	5fcd	4.3fcd	3.7fcd	3.2fcd	2.8fcd	2.5fcd	2.2fcd	2fcd	1.8fcd

Intensities in 0° c-plane

0°	2°	4°	6°	8°	10°	12°	14°	16°	18°	20°	22°	24°	26°	28°	30°	32°	34°	36°	38°
7749	7648	7407	7039	6594	6088	5551	5007	4470	3955	3460	2992	2542	2115	1712	1343	1019	742	498	326
100%	99%	96%	91%	85%	79%	72%	65%	58%	51%	45%	39%	33%	27%	22%	17%	13%	10%	6%	4%

Intensities in 90° c-plane

0°	2°	4°	6°	8°	10°	12°	14°	16°	18°	20°	22°	24°	26°	28°	30°	32°	34°	36°	38°
7749	7652	7392	7036	6591	6089	5555	5013	4481	3967	3479	3009	2562	2135	1730	1361	1032	748	501	324
100%	99%	95%	91%	85%	79%	72%	65%	58%	51%	45%	39%	33%	28%	22%	18%	13%	10%	6%	4%

Intensities in 180° c-plane

0°	2°	4°	6°	8°	10°	12°	14°	16°	18°	20°	22°	24°	26°	28°	30°	32°	34°	36°	38°
7749	7648	7407	7039	6594	6088	5551	5007	4470	3955	3460	2992	2542	2115	1712	1343	1019	742	498	326
100%	99%	96%	91%	85%	79%	72%	65%	58%	51%	45%	39%	33%	27%	22%	17%	13%	10%	6%	4%

Intensities in 270° c-plane

0°	2°	4°	6°	8°	10°	12°	14°	16°	18°	20°	22°	24°	26°	28°	30°	32°	34°	36°	38°
7749	7652	7392	7036	6591	6089	5555	5013	4481	3967	3479	3009	2562	2135	1730	1361	1032	748	501	324
100%	99%	95%	91%	85%	79%	72%	65%	58%	51%	45%	39%	33%	28%	22%	18%	13%	10%	6%	4%

Beam angle 50%	Field angle 10%	Cutoff angle 2,5%	Intensity ratio in 120° cone	Intensity ratio in 90° cone
36.7°	68.3°	84.8°	99.0%	96.7%