

Light efficiency:

75 Lumen/Watt

Light quality:

CRI: 92.3

Color temperature:

2468 K

Output: 846 lm

Peak: 4603 cd

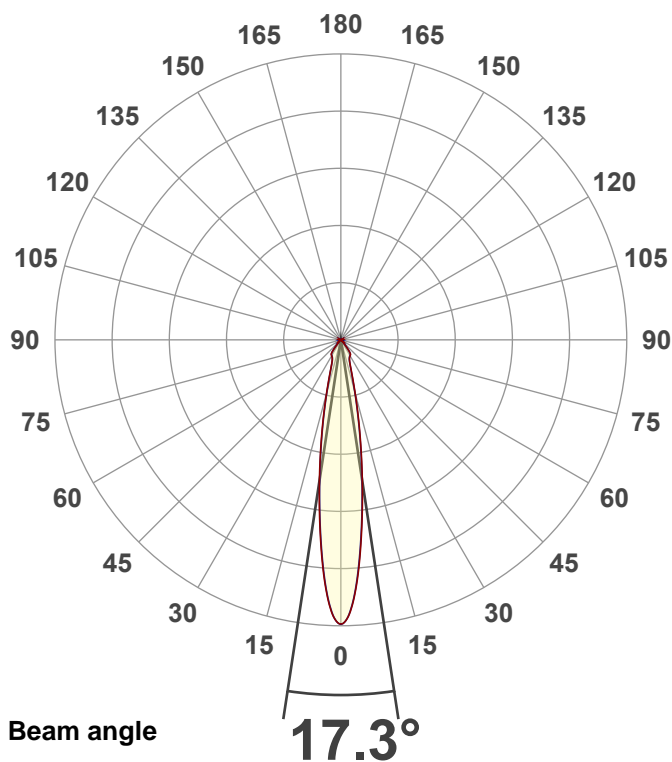
Power: 11.3 W

PF: 0.96



NU3-RD-SW-10LM-24K-90-15D-NL-WH-WH

Date and time:
11/21/2024 9:40:05 AM



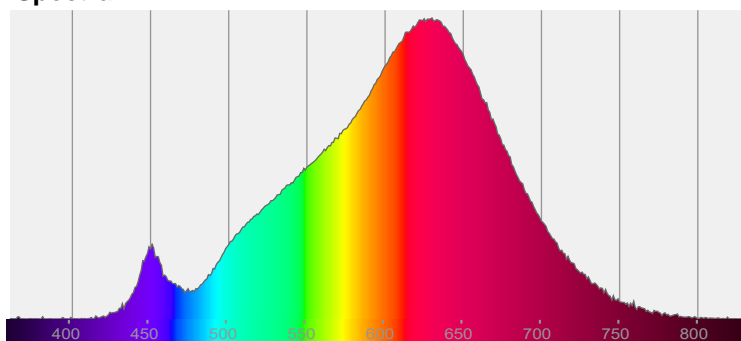
Beam angle

17.3°

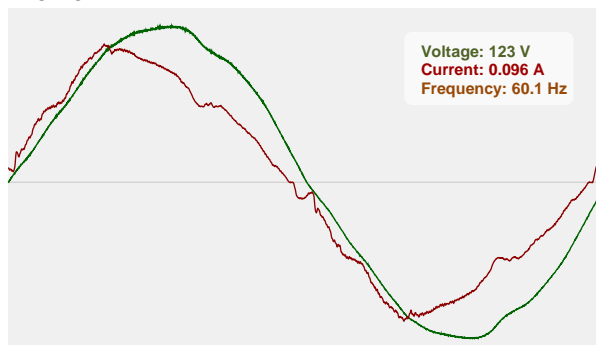


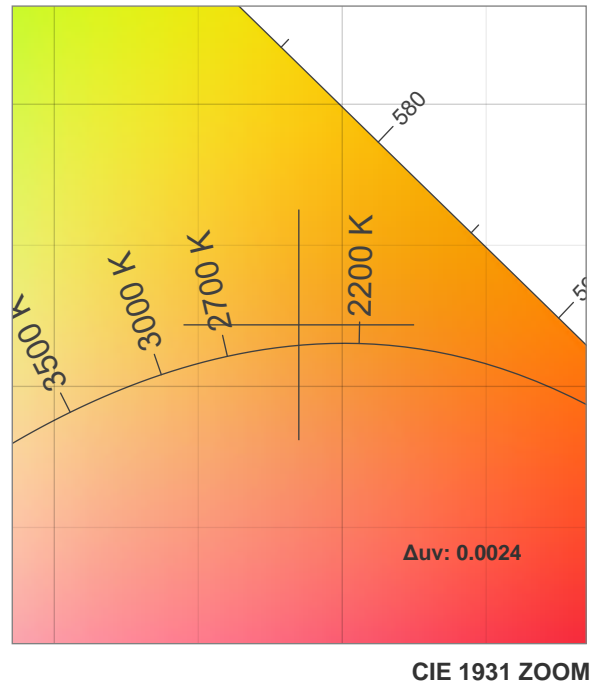
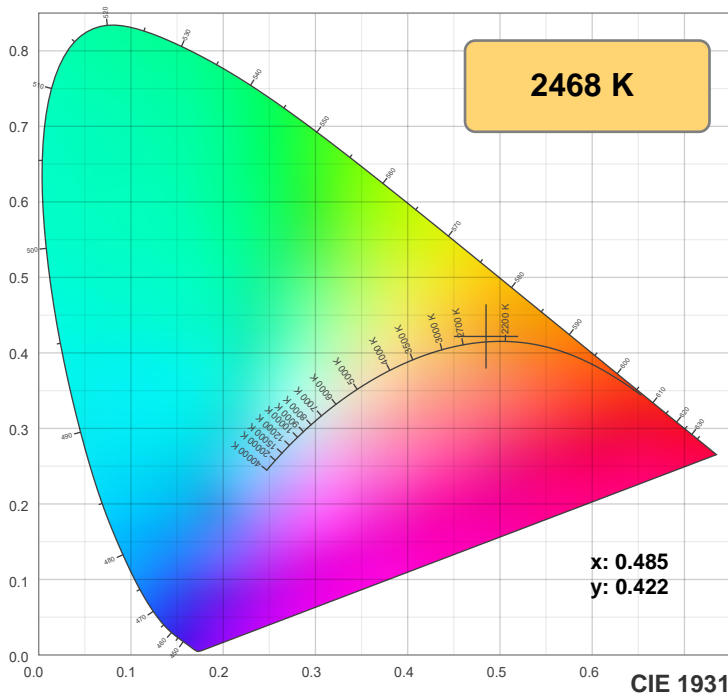
CIE 1931
x: 0.485
y: 0.422

Spectra

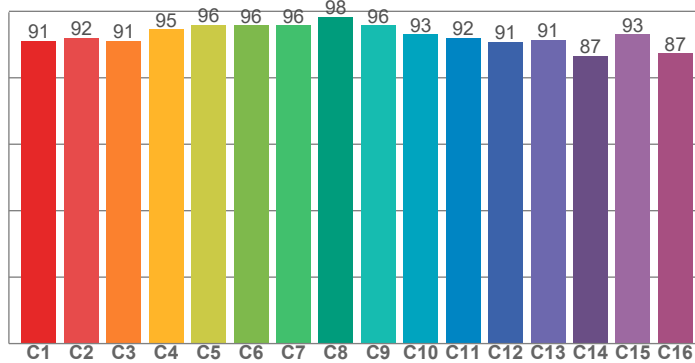


Power

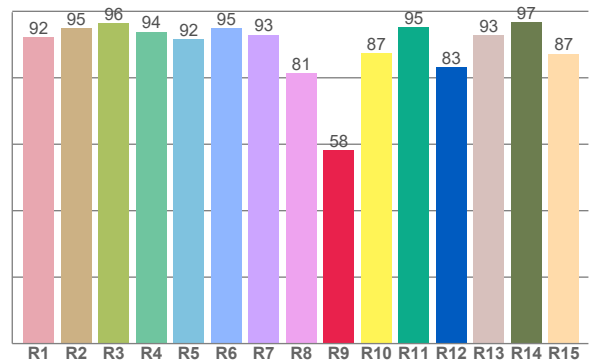




TM30: 92.8



CRI: 92.3 (R1-R8)



CRI R values, only R1-R8 are used to calculate final CRI value

R1	R2	R3	R4	R5	R6	R7	R8	R9	R10	R11	R12	R13	R14	R15
92.3	94.9	96.3	93.9	91.6	94.9	93.0	81.5	58.2	87.4	95.3	83.1	92.7	96.8	87.2

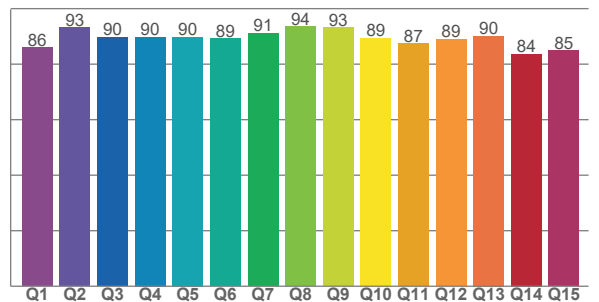
TM30 C values, 16 binned values out of total of 99 C values

C1	C2	C3	C4	C5	C6	C7	C8	C9	C10	C11	C12	C13	C14	C15	C16
91.0	91.9	91.1	94.6	95.9	95.7	95.7	98.4	95.7	93.0	92.0	90.8	91.4	86.5	93.1	87.4

CQS Q values

Q1	Q2	Q3	Q4	Q5	Q6	Q7	Q8	Q9	Q10	Q11	Q12	Q13	Q14	Q15
86.0	93.2	89.7	89.8	89.8	89.2	91.1	93.6	93.2	89.4	87.4	89.0	90.1	83.6	84.8

CQS: 88.8



Color parameters

Color temperature	Color rendering index	Red component	Color fidelity	Color gamut	Color quality scale	Color coordinate cie 1931	Color coordinate cie 1931	Color coordinate	Color coordinate	Color deviation from black body
CCT	CRI	CRI R9	TM30 Rf	TM30 Rg	CQS	x	y	u	v	Δuv
2468 K	92.3	58.2	92.8	98.7	88.8	0.485	0.422	0.274	0.357	0.0024

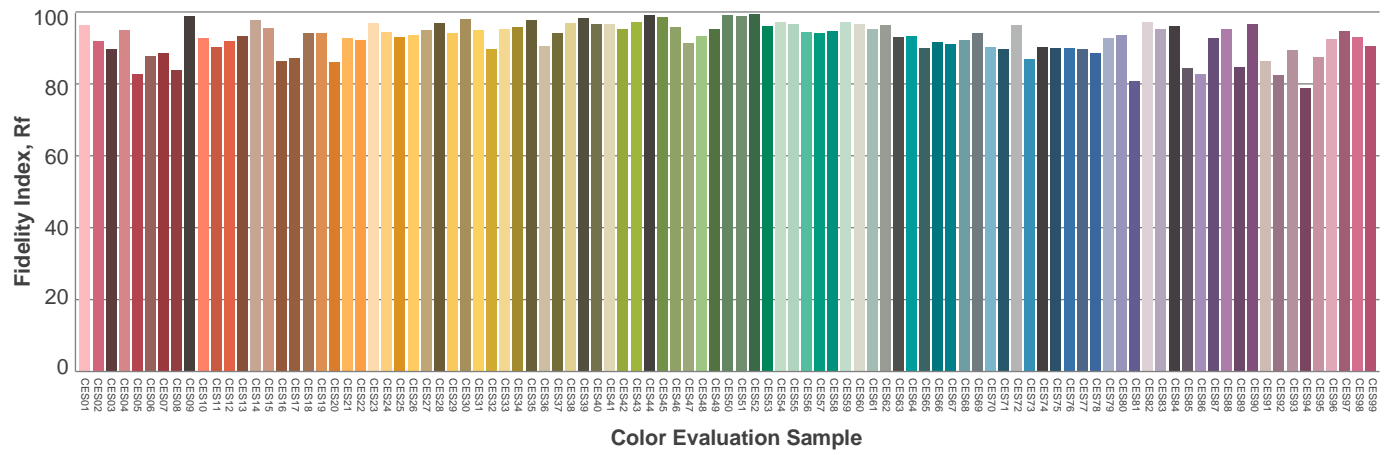
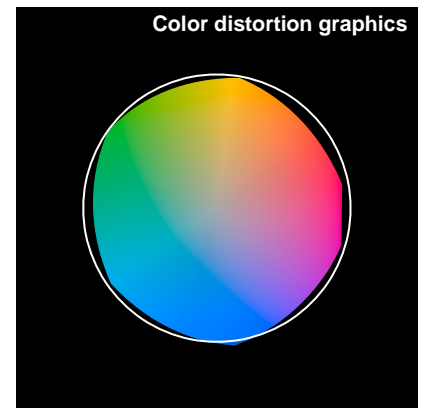
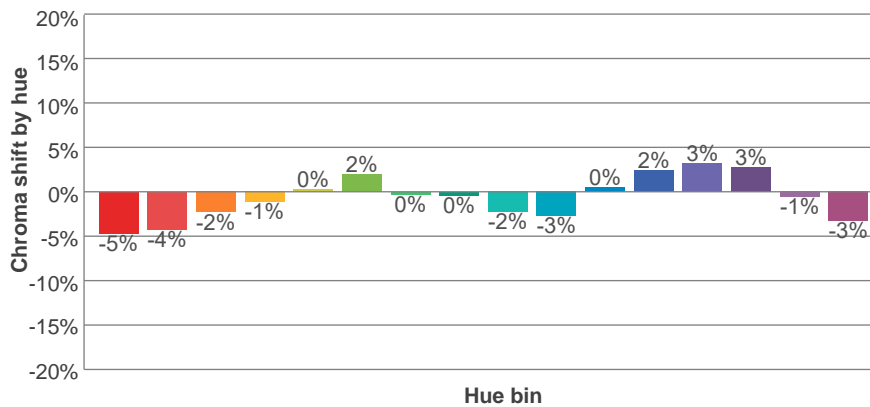
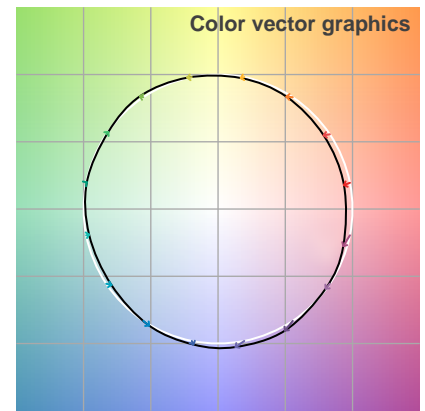
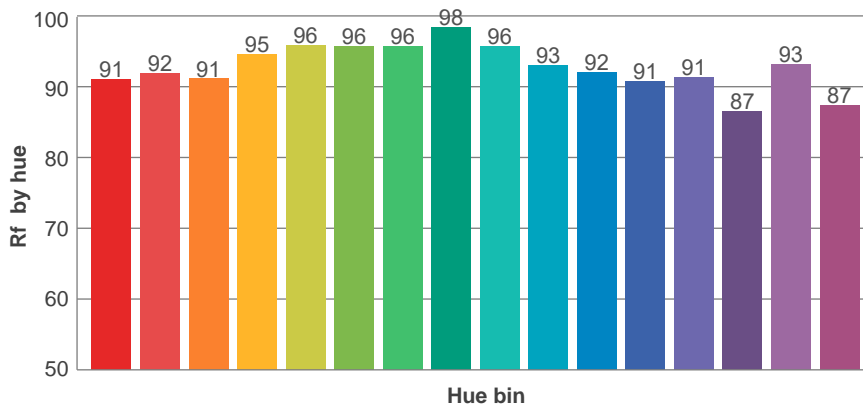
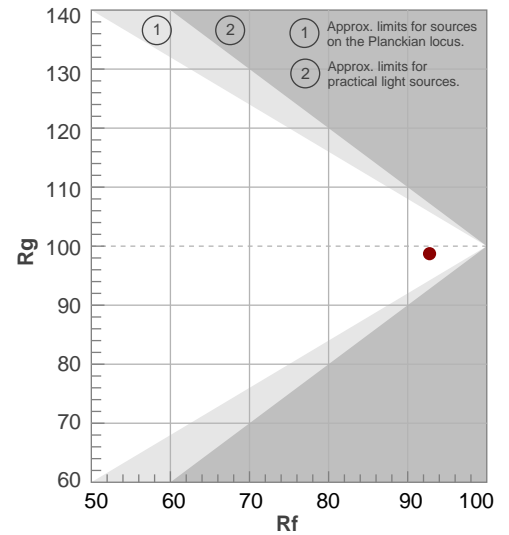
Rf 92.8

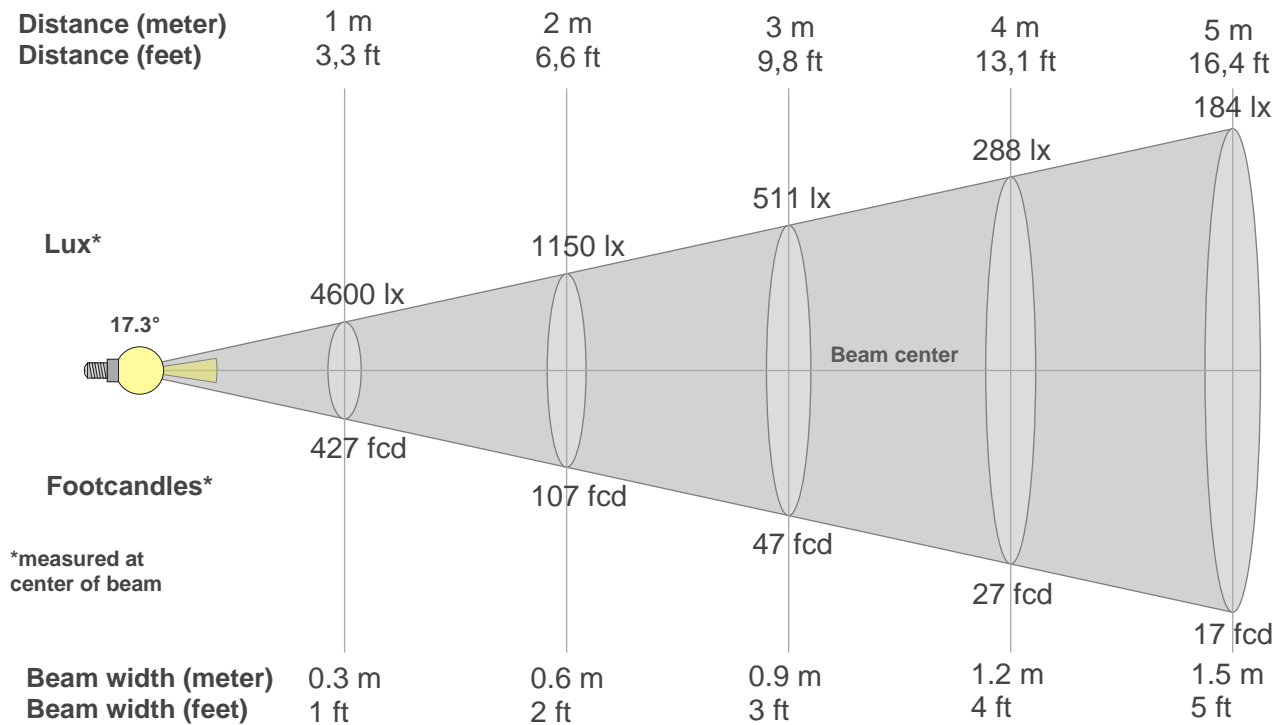
Fidelity index Rf

Rg 98.7

Gammut index Rg

Hue Bin	R _f	Graphic shifts (%)	
		Chroma	Hue
1	91	-5%	-1%
2	92	-4%	2%
3	91	-2%	4%
4	95	-1%	2%
5	96	0%	3%
6	96	2%	2%
7	96	0%	-2%
8	98	0%	0%
9	96	-2%	0%
10	93	-3%	3%
11	92	0%	6%
12	91	2%	2%
13	91	3%	-7%
14	87	3%	-9%
15	93	-1%	-5%
16	87	-3%	-9%





Beam intensities from 1-20m

1m	2m	3m	4m	5m	6m	7m	8m	9m	10m	11m	12m	13m	14m	15m	16m	17m	18m	19m	20m
3.3ft	6.6ft	9.8ft	13.1ft	16.4ft	19.7ft	23ft	26.2ft	29.5ft	32.8ft	36.1ft	39.4ft	42.7ft	45.9ft	49.2ft	52.5ft	55.8ft	59.1ft	62.3ft	65.6ft
4600lx	1150lx	511lx	288lx	184lx	128lx	94lx	72lx	57lx	46lx	38lx	32lx	27lx	23lx	20lx	18lx	16lx	14lx	13lx	12lx
427.4fcd	106.8fcd	47.5fcd	26.7fcd	17.1fcd	11.9fcd	8.7fcd	6.7fcd	5.3fcd	4.3fcd	3.5fcd	3fcd	2.5fcd	2.2fcd	1.9fcd	1.7fcd	1.5fcd	1.3fcd	1.2fcd	1.1fcd

Intensities in 0° c-plane

0°	1°	2°	3°	4°	5°	6°	7°	8°	9°	10°	11°	12°	13°	14°	15°	16°	17°	18°	19°
4600	4546	4399	4164	3869	3533	3182	2838	2510	2205	1923	1666	1437	1232	1051	896	769	665	578	509
100%	99%	96%	91%	84%	77%	69%	62%	55%	48%	42%	36%	31%	27%	23%	19%	17%	14%	13%	11%

Intensities in 90° c-plane

0°	1°	2°	3°	4°	5°	6°	7°	8°	9°	10°	11°	12°	13°	14°	15°	16°	17°	18°	19°
4600	4544	4385	4144	3838	3495	3145	2801	2473	2164	1884	1630	1399	1194	1016	862	736	635	553	491
100%	99%	95%	90%	83%	76%	68%	61%	54%	47%	41%	35%	30%	26%	22%	19%	16%	14%	12%	11%

Intensities in 180° c-plane

0°	1°	2°	3°	4°	5°	6°	7°	8°	9°	10°	11°	12°	13°	14°	15°	16°	17°	18°	19°
4600	4546	4399	4164	3869	3533	3182	2838	2510	2205	1923	1666	1437	1232	1051	896	769	665	578	509
100%	99%	96%	91%	84%	77%	69%	62%	55%	48%	42%	36%	31%	27%	23%	19%	17%	14%	13%	11%

Intensities in 270° c-plane

0°	1°	2°	3°	4°	5°	6°	7°	8°	9°	10°	11°	12°	13°	14°	15°	16°	17°	18°	19°
4600	4544	4385	4144	3838	3495	3145	2801	2473	2164	1884	1630	1399	1194	1016	862	736	635	553	491
100%	99%	95%	90%	83%	76%	68%	61%	54%	47%	41%	35%	30%	26%	22%	19%	16%	14%	12%	11%

Beam angle 50%	Field angle 10%	Cutoff angle 2,5%	Intensity ratio in 120° cone	Intensity ratio in 90° cone
17.3°	39.5°	78°	99.7%	99.5%