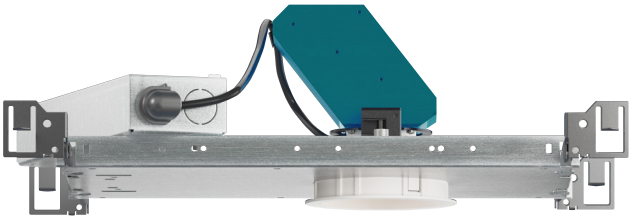
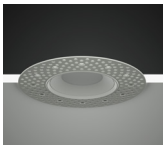


NU3

3" Round Downlight Hospitality CCTs



Trim



Trimless



Trimless Millwork

FEATURES

- 3/4" bezel regress with 1/16" micro flange
- 15° to 55° optical beam control
- UGR <17
- Up to 80 LPW
- Glare control, specialty optics, trim options, and custom finishes available
- Microban® antimicrobial finish available on all exposed painted surfaces

LED

- 90 CRI: SDCM = 2-step MacAdam Ellipse, Lumen Maintenance: L₇₀ > 66,000 hrs

DIMMING AND CONTROLS

- eldoLED flicker free 0-10V dimming to 0% and 1%
- eldoLED flicker free DALI dimming to 0% and 1%
- Lutron Hi-lume 0.1% Ecosystem
- Lutron athena wireless node
- Leading & trailing edge (Triac/ELV) dimming to 1%
- Casambi dimming to 1.0%
- NLight control interface dimming to 0%

LISTING

- ULus Listed to UL1598 & UL2108; cUL Listed to CSA C22.2 #250.0
- IP65 with lens - Suitable for wet locations with lens - Suitable for damp locations without lens
- Non-conductive, dead-front construction (shower approved)
- NSF/ANSI-2 with lens (Non-Food and Splash Zones)
- **Declare.** - LBC Red List Approved
- 5 Year Limited warranty

CONSTRUCTION

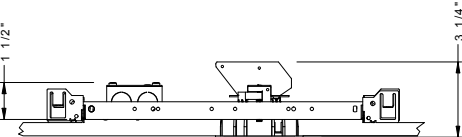
- Lexan™ (PC) highly resistant to impact and heat (240°F)
- Optimal material for wireless signal connectivity
- Shatter proof acrylic bezel lens
- Electrocoated 16-gauge cold-rolled steel construction
- Accommodates ceiling thickness from 1/8" to 1-3/8"

ELECTRICAL

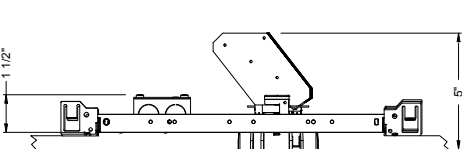
- 120V-277V, 120 only Triac / ELV
- Power factor ≥ 0.9
- 2kV driver input surge protection
- Remote emergency test switch
- 7W, 10W (T20 CEC) and 12W EM 90min battery
- Max. ambient installation temperature 95°F (35°C)

FIXTURE HEIGHT

LED LIGHT ENGINE: 10LM - 12LM



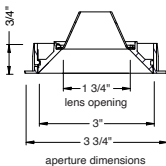
LED LIGHT ENGINE: 15LM - 25LM



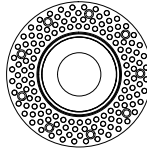
TRIMMED



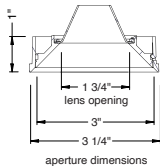
ceiling cutout
3-3/8" diameter
ceiling thickness
1/8" to 1-1/4"



TRIMLESS



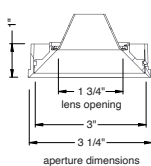
ceiling cutout
3-1/2" diameter
ceiling thickness
3/8" to 1-3/8"



MILLWORK



ceiling cutout
3-3/8" diameter
ceiling thickness
1/2" to 1-3/8"



alphabet

ORDERING CODE					
SERIES	NU3	NU3			
TYPE	RD	round downlight			
	RDT	round downlight trimless			
	RDTMW	round downlight trimless millwork			
LED	SW	standard white			
DELIVERED LUMENS	10LM	890 lm			
	12LM	1130 lm			
	15LM	1530 lm			
	20LM	1960 lm			
	25LM	2450 lm			
	Standard Configuration: 2400K 90CRI NL Calculated Delivered Lumens = [Delivered Lumen Value] x [CCT Multiplier] x [Reflector Multiplier]				
CCT	22K	2200K (0.94)	CCT	2200K	2400K
	24K	2400K (1.00)	CRI	90+	90+
			CCT MULTIPLIER FOR LUMEN OUTPUT	0.94	1
CRI	90	90 CRI			
OPTIC & LM MULTIPLIER SEE PAGE 4	15D ¹	15 degrees	(1.00)		
	20D	20 degrees	(1.00)		
	25D	25 degrees	(0.98)		
	40D	40 degrees	(0.97)		
	55D	55 degrees	(0.96)		
ACCESSORY	HCL ²	honeycomb louver	(0.73)		
	Attached to bezel				
BEZEL LENS SEE PAGE 3	NL ³	no lens	(1.00)		
	CL	clear lens	(0.96)		
	DL	diffused lens	(0.93)		
	HET	high efficiency textured lens, similar to Solite™	(0.95)		
	SBL	smoothing beam lens	(0.95)		
	E	elliptical beam spread	(0.92)		
TRIM COLOR SEE PAGE 3	BK	black			
	WH	white			
	MC	matte chrome			
	WT	wheat			
	BZ	bronze			
	CC ⁴	custom color, consult factory for details			
	Antimicrobial finish, add AM to black, white or matte chrome i.e. BKAM.				
Not applicable to trimless option. Do not include in trimless ordering code.					
BEZEL COLOR SEE PAGE 3	BK	black	(0.98)		
	WH	white	(1.00)		
	MC	matte chrome	(0.99)		
	BZ	bronze	(0.98)		
	WT	wheat	(0.99)		
	CC ⁴	custom color, consult factory for details			
	Antimicrobial finish, add AM to black, white or matte chrome i.e. BKAM.				

PROJECT INFORMATION			
JOB NAME		TYPE	
ORDERING CODE			

ORDERING CODE		
MOUNTING OPTIONS SEE PAGE 6, 7	NC	new construction with ceiling fitting plate
	IC ⁵	insulation contact housing
	ICAT ⁵	insulation contact/airtight housing
	CP ⁵	chicago plenum housing
	RET	retrofit, no ceiling fitting plate
VOLTAGE	I20	120V
	UNV	120V-277V
DIMMING	DIM10	eldoLED flicker free 0-10V dimming to 1%
	DIM10Z	eldoLED flicker free 0-10V dimming to 0%
	DALI	eldoLED flicker free DALI-2 dimming to 1%
	DALIZ	eldoLED flicker free DALI-2 dimming to 0%
	LUTP ⁶	Lutron Hi-lume Premier Ecosystem dimming to 0.1%, Soft-on & Fade-to-Black
	ELV1	leading & trailing edge (Triac/ELV) dimming to 1%
	NLT ⁷	nLight control interface: standard Cat-5/RJ45 connection (female), dim to off
	CAS	Casambi control with flicker free 1% dimming
ELECTRICAL OPTIONS	AWN ⁸	lutron athena wireless node
	EM7	emergency battery backup, 90 minutes at 7W to LED
	EM12	emergency battery backup, 90 minutes at 12W to LED
	EM10CA20	remote emergency battery backup, 90 minutes at 10W to LED, CA title 20

ADDITIONAL MOUNTING INFO	
New Construction Bar Hangers (included)	Mounting Length: 14-3/4" to 26"
Extension Kit p/n: K20266 (ordered separately, 1 per fixture)	<i>Extends a pair of Bar Hangers</i> Total Mounting Length: 29" to 48"

YOUR COMPLETED ORDERING CODE
Follow the steps to specify your fixture, example:
NU3 - RD - SW - 20LM - 24K - 90 - 20D - NL - WH - WH - NC - UNV - DIM10 - EM7

NOTES

- 15D available in 10LM/12LM.
- HCL not available with lens.
- NL option does not meet requirement for AT/DF/WET/NSF listings. Lensing cannot be added in the field.
- Custom set up fee plus minimum quantity required per color.
- IC/ICAT/CP not available in 12LM/20LM/25LM
- LUTP not available in 25LM
- For servicing access above ceiling is required.
- AWN reference page 9 for product specifications on Athena wireless node.

* EldoLED uses logarithmic dimming curve as standard. For linear dimming curve, add "LIN" after dimming code, i.e. DIM10LIN.

alphabet

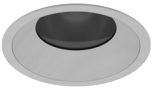
PROJECT INFORMATION		
JOB NAME		TYPE
ORDERING CODE		

TRIM OPTIONS

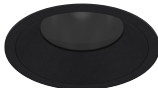
TRIM/BEZEL COLORS



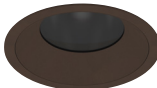
WH



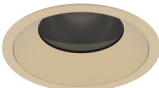
MC



BK



BZ



WT

OPTICAL OPTIONS

- UGR calculation based on CIE 117-1995; room size: 4H X 8H, reflectance: 70/50/20;
- UGR calculation based on 15LM fixtures, unless otherwise noted.

REFLECTOR OPTIC ACCESSORY

Honeycomb Louver



OPTIC	BEAM ANGLE	UGR
15D*	12	≤5
20D	16	≤5
25D	20	≤5
40D	32	≤5
55D	44	≤5

* 15D UGR calculation based on 10LM fixtures

NL

No Lens



OPTIC	BEAM ANGLE	UGR
15D*	17	15.8
20D	21	17.6
25D	25	17.2
40D	39	18.2
55D	55	18.4

* 15D UGR calculation based on 10LM fixtures

CL

Clear Lens



OPTIC	BEAM ANGLE	UGR
15D*	17	15.7
20D	21	17.4
25D	25	16.9
40D	39	17.8
55D	56	18

* 15D UGR calculation based on 10LM fixtures

DL

Diffused Lens



OPTIC	BEAM ANGLE	UGR
20D	40	21.5
25D	45	21.9
40D	52	22.5
55D	59	23.3

HET

High Efficiency Textured Lens



OPTIC	BEAM ANGLE	UGR
15D*	20	17.7
20D	24	18.5
25D	27	19.1
40D	39	19.6
55D	50	19.9

* 15D UGR calculation based on 10LM fixtures

SBL

Smoothing Beam Lens



OPTIC	BEAM ANGLE	UGR
15D*	18	17.5
20D	22	18.4
25D	27	19
40D	40	19.2
55D	56	19.7

* 15D UGR calculation based on 10LM fixtures

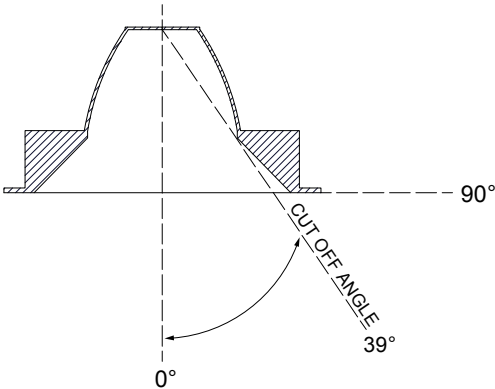
GLARE CONTROL

CUT-OFF ANGLE

Visual comfort is achieved with a lower cut-off angle due to improved glare control. The smaller the cut-off angle, the easier it is on the eye.

Alphabet downlights have been thoughtfully engineered to eliminate glare while still delivering functional illumination.

- Cutoff angle is 39° degrees;



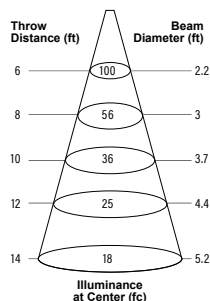
PROJECT INFORMATION		
JOB NAME		TYPE
ORDERING CODE		

PHOTOMETRIC DATA

10LM CCT MULTIPLIERS

	90CRI
2200K	0.94
2400K	1
FC Formula = CBCP / Distance ²	

20D-NL 21° WITH NO LENS



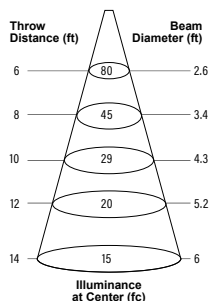
WATTS: 10.5 LPW: 84.8

LUMENS: 890 CCT: 2400K

INTENSITY

DEGREE	CANDELA
0	3599
5	3095
15	1016
25	389
35	240
45	4

25D-NL 25° WITH NO LENS



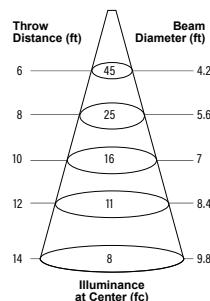
WATTS: 10.5 LPW: 83.4

LUMENS: 876 CCT: 2400K

INTENSITY

DEGREE	CANDELA
0	2863
5	2508
15	1052
25	458
35	212
45	8

40D-NL 39° WITH NO LENS



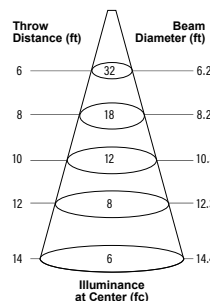
WATTS: 10.5 LPW: 82.6

LUMENS: 868 CCT: 2400K

INTENSITY

DEGREE	CANDELA
0	1622
5	1571
15	1079
25	548
35	243
45	12

55D-NL 55° WITH NO LENS



WATTS: 10.5 LPW: 81.7

LUMENS: 858 CCT: 2400K

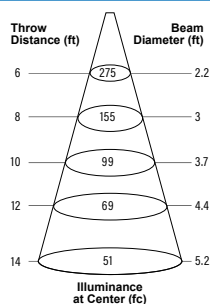
INTENSITY

DEGREE	CANDELA
0	1166
5	1145
15	988
25	664
35	243
45	14

25LM CCT MULTIPLIERS

	90CRI
2200K	0.94
2400K	1
FC Formula = CBCP / Distance ²	

20D-NL 21° WITH NO LENS



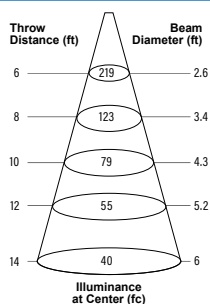
WATTS: 34.4 LPW: 71.2

LUMENS: 2451 CCT: 2400K

INTENSITY

DEGREE	CANDELA
0	9910
5	8522
15	2798
25	1072
35	662
45	12

25D-NL 25° WITH NO LENS



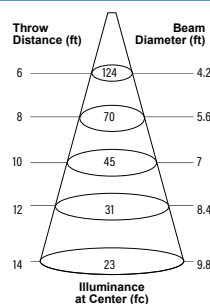
WATTS: 34.4 LPW: 70.1

LUMENS: 2412 CCT: 2400K

INTENSITY

DEGREE	CANDELA
0	7885
5	6907
15	2897
25	1262
35	583
45	23

40D-NL 39° WITH NO LENS



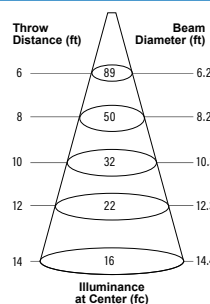
WATTS: 34.4 LPW: 69.5

LUMENS: 2389 CCT: 2400K

INTENSITY

DEGREE	CANDELA
0	4467
5	4328
15	2971
25	1511
35	669
45	34

55D-NL 55° WITH NO LENS



WATTS: 34.4 LPW: 68.7

LUMENS: 2362 CCT: 2400K

INTENSITY

DEGREE	CANDELA
0	3211
5	3153
15	2722
25	1828
35	670
45	37

PROJECT INFORMATION			
JOB NAME		TYPE	
ORDERING CODE			

PHOTOMETRIC DATA

10LM CCT MULTIPLIERS	
	90CRI
2200K	0.94
2400K	1
FC Formula = CBCP / Distance ²	

15D-NL 17° WITH NO LENS	
Throw Distance (ft)	Beam Diameter (ft)
6	1.8
8	2.4
10	3
12	3.6
14	4.3
Illuminance at Center (fc)	
128	
72	
46	
32	
23	
WATTS: 11.3	LPW: 75
LUMENS: 847	CCT: 2400K
INTENSITY	
DEGREE	CANDELA
0	4600
5	3521
15	881
25	327
35	254
45	2

12LM CCT MULTIPLIERS	
	90CRI
2200K	0.94
2400K	1
FC Formula = CBCP / Distance ²	

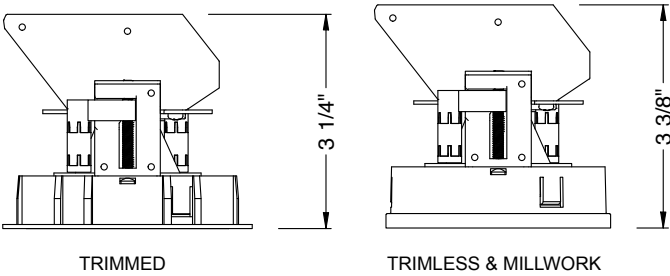
15D-NL 17° WITH NO LENS	
Throw Distance (ft)	Beam Diameter (ft)
6	1.8
8	2.4
10	3
12	3.6
14	4.3
Illuminance at Center (fc)	
170	
96	
61	
43	
31	
WATTS: 16	LPW: 70.6
LUMENS: 1129	CCT: 2400K
INTENSITY	
DEGREE	CANDELA
0	6132
5	4693
15	1174
25	436
35	339
45	3

PROJECT INFORMATION		
JOB NAME	TYPE	
ORDERING CODE		

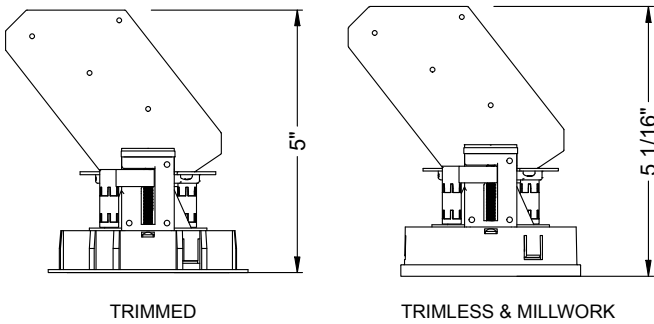
MOUNTING OPTIONS

FIXTURE HEIGHT

10LM - 15LM CONFIGURATION

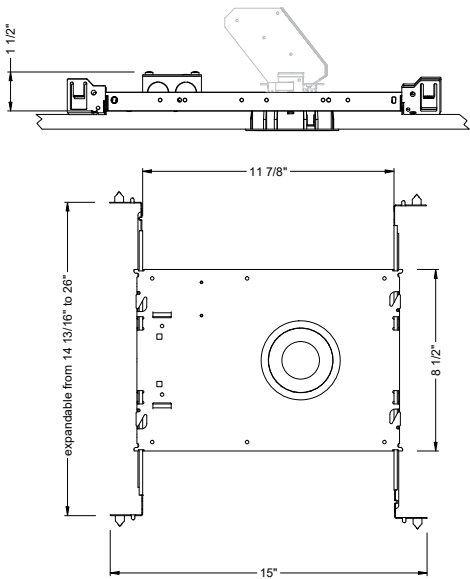


20LM - 25LM CONFIGURATION

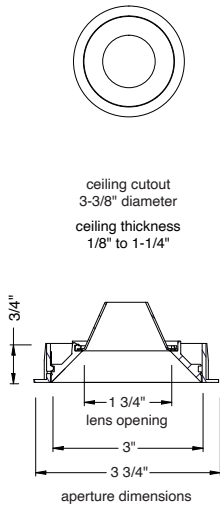


NC - NEW CONSTRUCTION

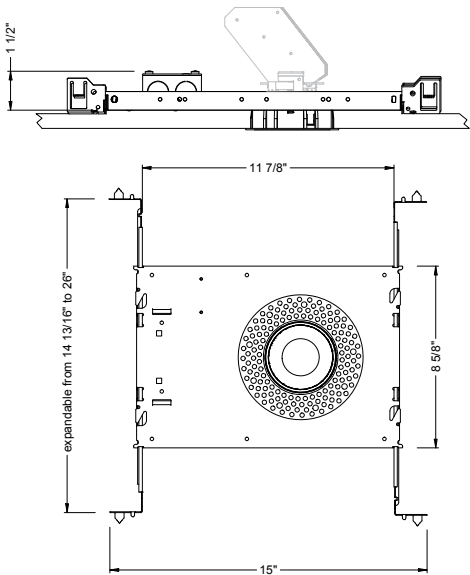
TRIM



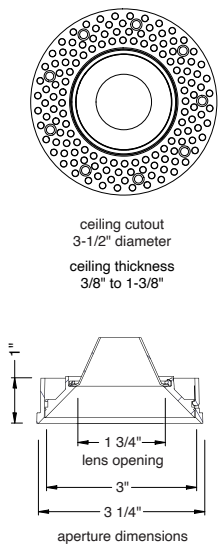
TRIM



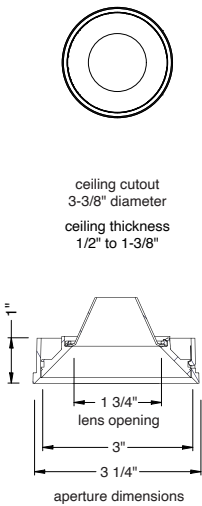
TRIMLESS



TRIMLESS



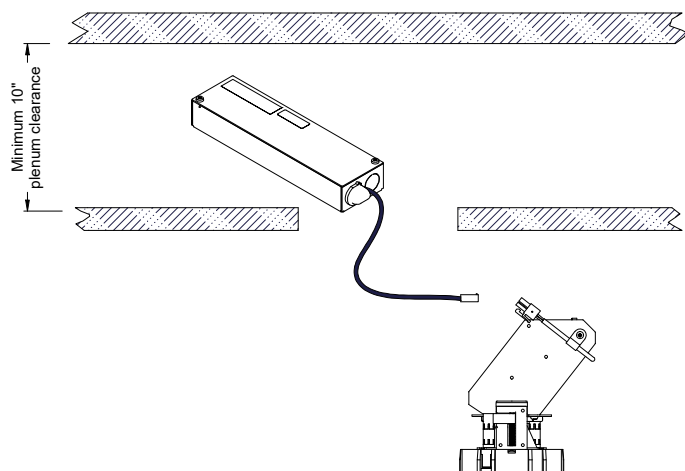
TRIMLESS/MILLWORK



PROJECT INFORMATION			
JOB NAME		TYPE	
ORDERING CODE			

MOUNTING OPTIONS (CONTINUED)

RET - RETRO TRIM/TRIMLESS



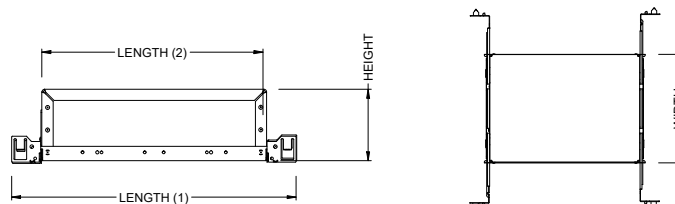
RATINGS / CERTIFICATIONS	NC	RET	IC	ICAT	CP
TYPE NON-IC	✓	✓			
TYPE IC			✓	✓	
CHICAGO PLENUM (CCEA)					✓
SUITABLE FOR AIR HANDLING PLENUMS	✓	✓	✓	✓	✓
REDUCED AIRFLOW (WITH LENS) ASTM E283	✓	✓	✓	✓	✓

CEILING THICKNESS	
FIXTURE TYPE	MOUNTING TYPE
	NC, IC, ICAT, CP, RET
	STANDARD CEILING THICKNESS
TRIM	1/8" to 1-1/4"
TRIMLESS	3/8" to 1-3/8"
MILLWORK (TRIMLESS)	1/2" to 1-3/8"

IC - INSULATION CONTACT HOUSING

ICAT - INSULATION CONTACT / AIR TIGHT

CP - CHICAGO PLENUM



BOX SIZE	L 1	L 2	W	H
A	15 - 7/16"	11 - 3/4"	8 - 1/2"	6 - 3/4"

BOX TYPE / LUMEN OUTPUT - STANDARD BEAMS (20° - 55°)			
LUMEN OUTPUT	BOX - A		
	IC	ICAT	CP
10LM	✓	✓	✓
15LM	✓	✓	✓
20LM			
25LM			

BOX TYPE / LUMEN OUTPUT - STANDARD BEAMS (15°)			
LUMEN OUTPUT	BOX - A		
	IC	ICAT	CP
10LM	✓	✓	✓
12LM	✓	✓	✓

PROJECT INFORMATION			
JOB NAME		TYPE	
ORDERING CODE			

BATTERY OPTIONS

EMERGENCY BATTERY

IOTA's ILB Battery Backups are UL Listed LED emergency drivers that allow the same LED fixture to be used for both normal and emergency operation. In the event of a power failure, the ILB switches to the emergency mode and operates the existing fixture for 90 minutes. The unit contains a battery, charger, and converter circuit in a single can. The Constant Power design of the ILB maintains the output wattage to the LED array even as the system voltage diminishes. UL 924 Listed for U.S. and Canada. UL 1310 Certified, Output Class 2 Compliant. Includes single-piece TBTS test switch and charge indicator accessory kit. For use with switched and unswitched fixtures, and includes Two-wire universal AC input. Meets or exceeds all National Electric Code and Life Safety Code Emergency Lighting Requirements. Rated for use in Plenum, Damp Location, Recessed Type IC, and Enclosed and Gasketed Luminares.

REMOTE TEST SWITCH

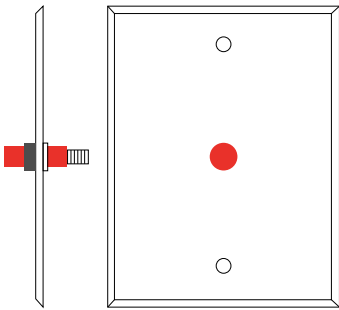
The Remote Test Switch may be mounted adjacent to the LED Fixture by others.

EMERGENCY BATTERY ACCESS

Above ceiling access is required for service. An access panel in the ceiling (or other form of access) adjacent to the installation location of the Emergency Battery is required.

REMOTE LOCATION

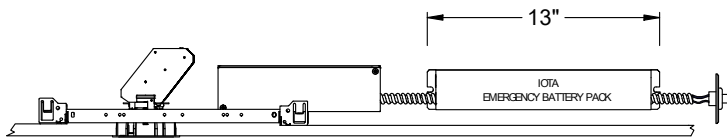
Maximum remote mounting distance of the emergency driver shall be 50 feet. Remote location wiring provided by others. Follow all Local and National Electric/ Building Codes.



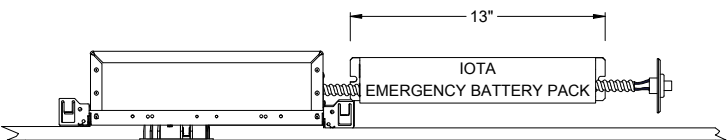
Remote Test Switch

EM MODE OUTPUT (DELIVERED LUMENS)			
LUMEN ORDERING CODE	EM7	EM10	EM12
ALL OPTIONS (10LM TO 25LM)	712LM	986LM	1132LM
Notes: Based on 24K, 90CRI			

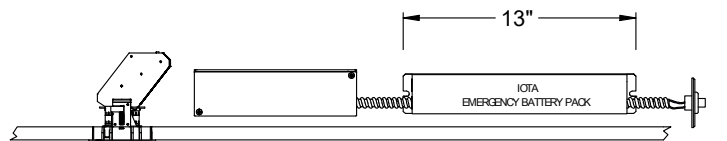
NC - NEW CONSTRUCTION
WITH EM BATTERY (REMOTE TEST SWITCH)



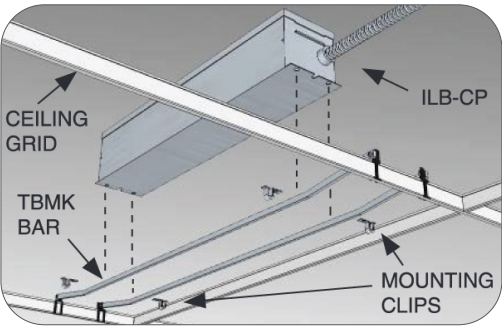
IC / ICAT / CP - INSULATION CONTACT HOUSING
WITH EM BATTERY (REMOTE TEST SWITCH)



RET - RETROFIT
WITH EM BATTERY (REMOTE TEST SWITCH)



Accessory
76066 Optional T-Grid Mounting Kit¹



1. Can be used with any of the Emergency Battery Backups. Must be ordered as a separate line item.

PROJECT INFORMATION			
JOB NAME		TYPE	
ORDERING CODE			

AWNRR OPTIONS

Athena Wireless Node

The Athena wireless node is a radio frequency (RF) device that enables simple, digital control of individual light fixtures in an Athena control system.



Athena Wireless Node RF

AWNRR

Plenum rated and can be installed above the ceiling for wireless control of a fixture without any impact on fixture aesthetics.

FEATURES

- Enables individual, wireless control of each fixture in an Athena control system. Accommodates zone and control changes without rewiring.
- Installed at factory – no wiring required on-site. Fixture is ready to communicate wirelessly once power is connected.
- All drivers on the link are controlled as a single zone.

REGULATORY APPROVALS

- cULus Listed (UL916)
- Complies with requirements for use in other spaces used for environmental air (plenums) per NEC® 2014 300.22(C)(3).
- FCC compliant with the limits for a Class B digital device.
- IC (Industry Canada)
- ANSI C137.1 0-10 V- Electronic Off

POWER / LOAD

- IEC SELV/NEC® Class 2
- 1 Watt

ENVIRONMENTAL

- Ambient operating temperature (immediate vicinity of Athena wireless node): **32 °F to 131 °F** (0 °C to 55 °C), 0% to 90% humidity.

BATTERY OPTIONS

- For EM options please consult factory.

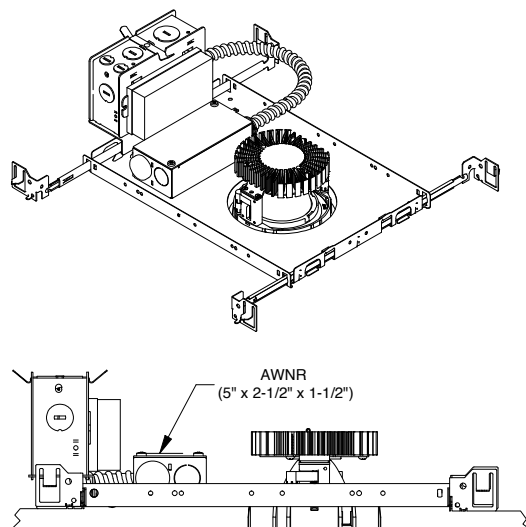
Note: Default behavior prior to programming

- Light level 100%
- Athena wireless node performs an unprogrammed startup sequence on every power up until the device is added to an Athena system.
- Each Athena wireless node should be installed within 25 ft (7.62 m) of two or more Athena wireless nodes or other Clear Connect – Type X devices.
- For Chicago plenum installations, the Athena wireless node may not be installed in the plenum space. It must be installed in the occupied space.

For servicing the driver/j-box, access above ceiling is required. (NC Mounting)

IC/ICAT/CP not available in Awnr.

NC - NEW CONSTRUCTION



RET - RETRO FIT

