

Light efficiency:

91 Lumen/Watt

Light quality:

CRI: 92.0

Color temperature:

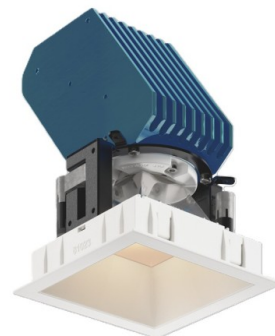
3038 K

Output: 1446 lm

Peak: 1388 cd

Power: 15.9 W

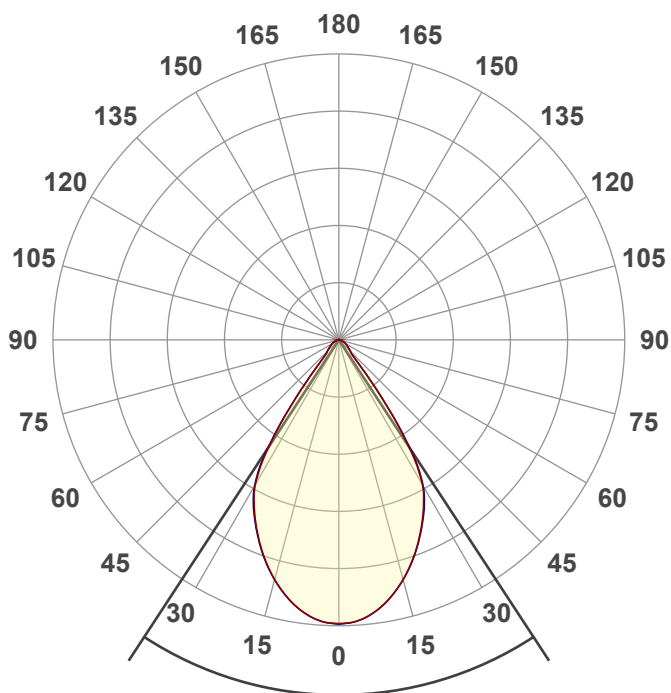
PF: 0.96



NU3-QD-SW-20LM-30K-90-D70-WH-WH

Date and time:

9/23/2022 2:49:26 PM



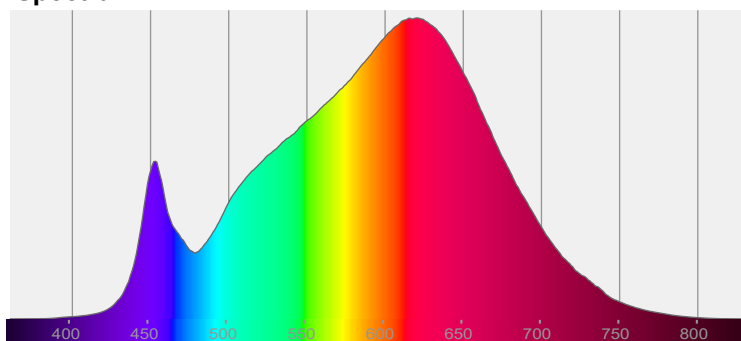
Beam angle

66.5°

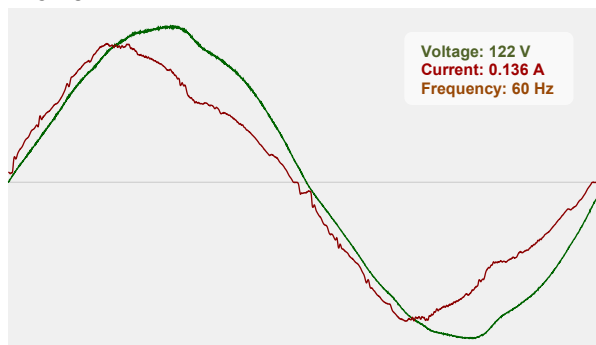


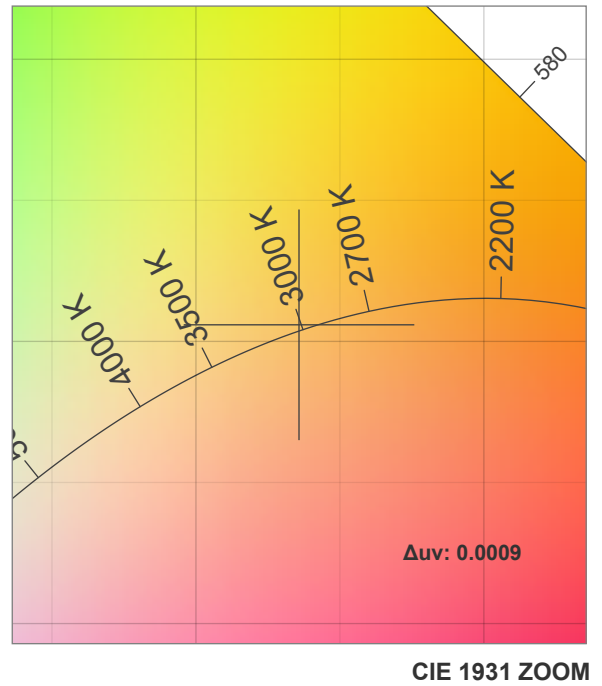
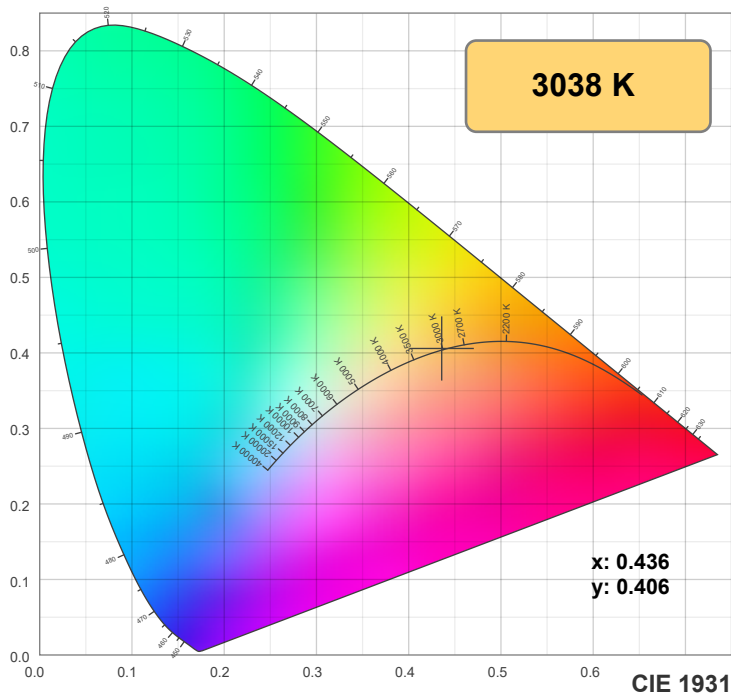
CIE 1931  
x: 0.436  
y: 0.406

Spectra

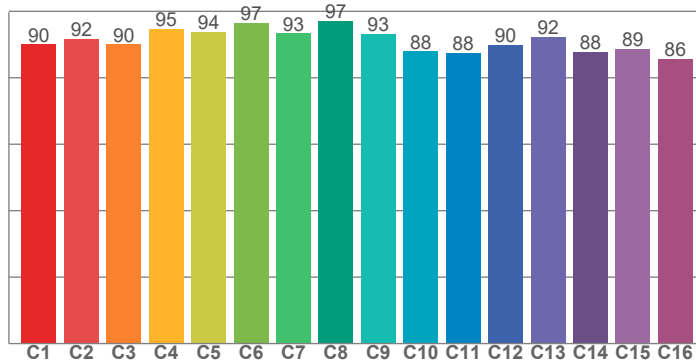


Power

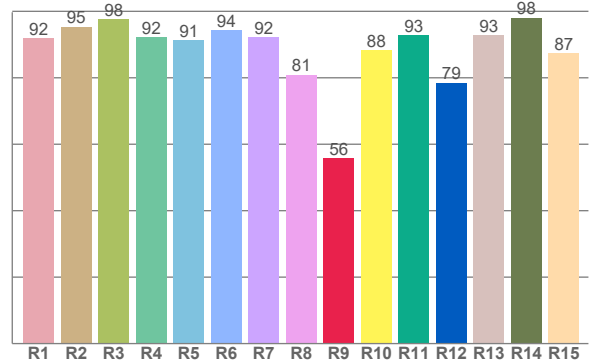




**TM30: 91.3**



**CRI: 92.0 (R1-R8)**



CRI R values, only R1-R8 are used to calculate final CRI value

R1	R2	R3	R4	R5	R6	R7	R8	R9	R10	R11	R12	R13	R14	R15
91.9	95.4	97.7	92.3	91.3	94.2	92.2	80.9	55.8	88.4	92.9	78.5	92.7	98.1	87.4

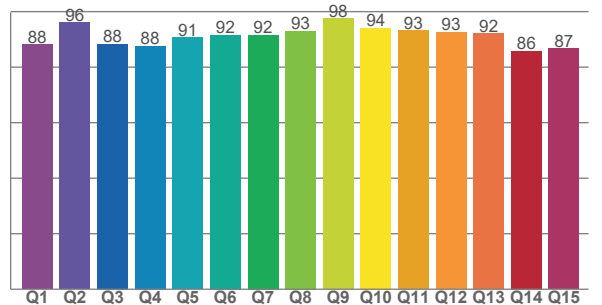
TM30 C values, 16 binned values out of total of 99 C values

C1	C2	C3	C4	C5	C6	C7	C8	C9	C10	C11	C12	C13	C14	C15	C16
90.0	91.7	90.0	94.7	93.7	96.6	93.4	97.2	93.2	88.0	87.6	89.8	92.3	87.8	88.7	85.7

CQS Q values

Q1	Q2	Q3	Q4	Q5	Q6	Q7	Q8	Q9	Q10	Q11	Q12	Q13	Q14	Q15
88.1	96.0	88.3	87.7	90.6	91.5	91.7	93.0	97.5	94.0	93.2	92.6	92.1	85.8	86.6

**CQS: 90.5**



## Color parameters

Color temperature	Color rendering index	Red component	Color fidelity	Color gamut	Color quality scale	Color coordinate cie 1931	Color coordinate cie 1931	Color coordinate	Color coordinate	Color deviation from black body
CCT	CRI	CRI R9	TM30 Rf	TM30 Rg	CQS	x	y	u	v	Δuv
3038 K	92.0	55.8	91.3	98.5	90.5	0.436	0.406	0.249	0.348	0.0009

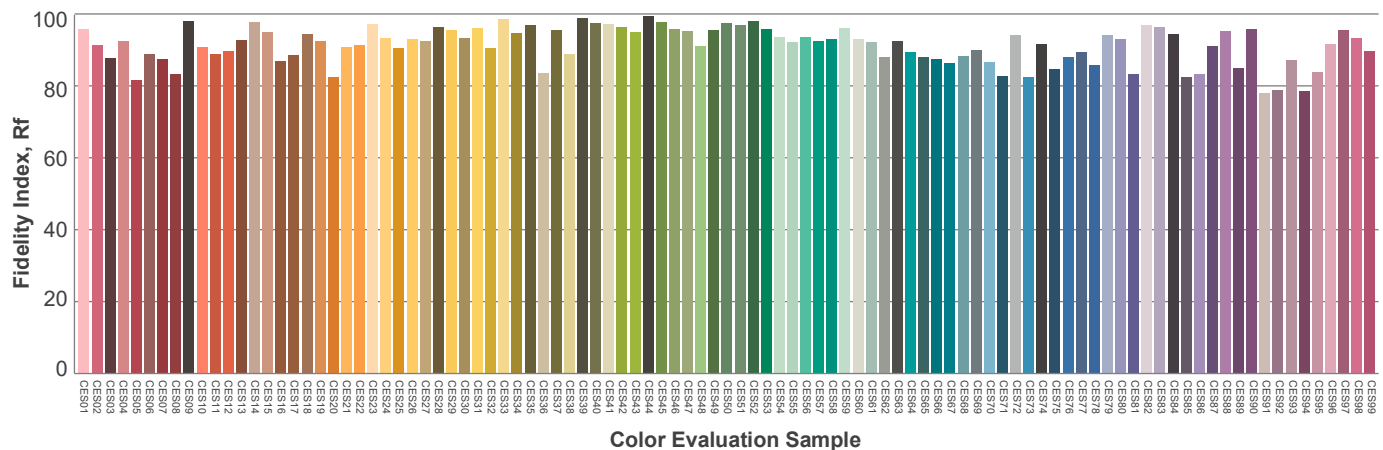
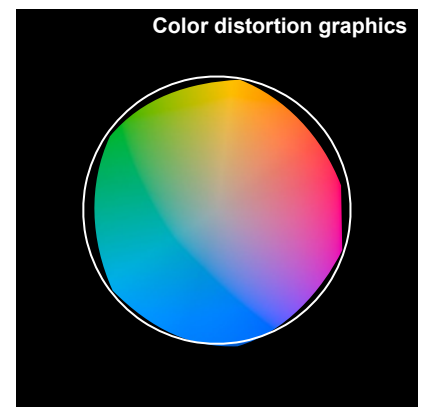
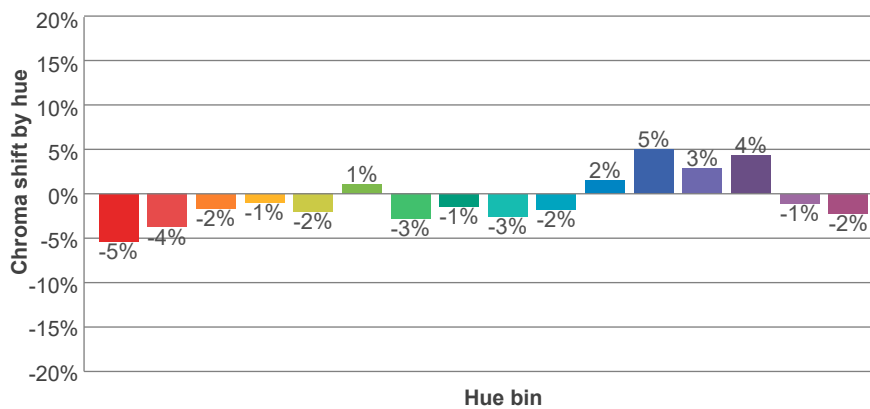
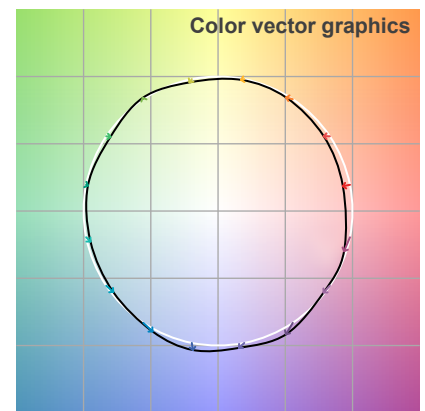
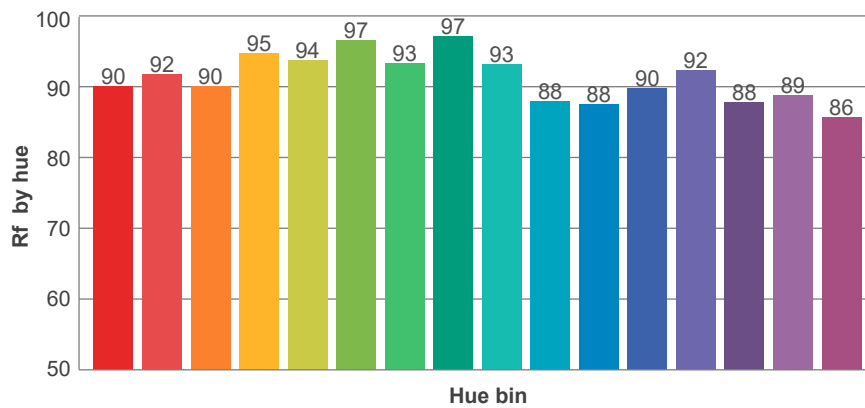
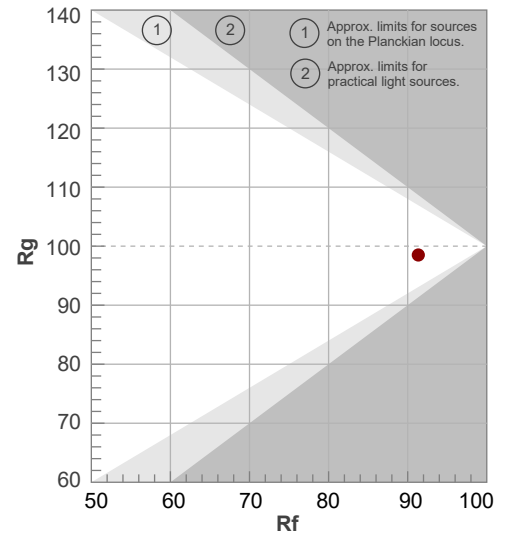
**Rf 91.3**

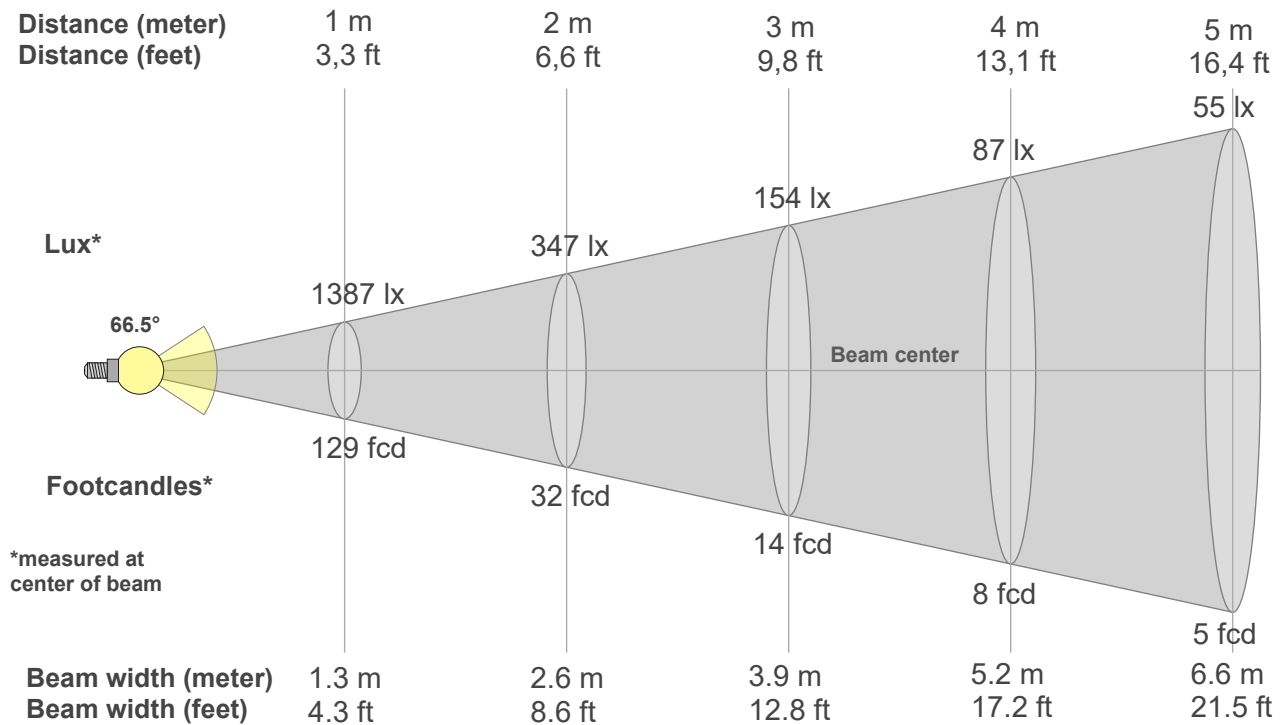
Fidelity index Rf

**Rg 98.5**

Gammut index Rg

Hue Bin	R <sub>f</sub>	Graphic shifts (%)	
		Chroma	Hue
1	90	-5%	0%
2	92	-4%	3%
3	90	-2%	5%
4	95	-1%	2%
5	94	-2%	2%
6	97	1%	0%
7	93	-3%	-1%
8	97	-1%	0%
9	93	-3%	4%
10	88	-2%	7%
11	88	2%	9%
12	90	5%	2%
13	92	3%	-5%
14	88	4%	-9%
15	89	-1%	-7%
16	86	-2%	-11%





#### Beam intensities from 1-20m

1m	2m	3m	4m	5m	6m	7m	8m	9m	10m	11m	12m	13m	14m	15m	16m	17m	18m	19m	20m
3.3ft	6.6ft	9.8ft	13.1ft	16.4ft	19.7ft	23ft	26.2ft	29.5ft	32.8ft	36.1ft	39.4ft	42.7ft	45.9ft	49.2ft	52.5ft	55.8ft	59.1ft	62.3ft	65.6ft
1387lx	347lx	154lx	87lx	55lx	39lx	28lx	22lx	17lx	14lx	11lx	10lx	8lx	7lx	6lx	5lx	5lx	4lx	4lx	3lx
128.8fcd	32.2fcd	14.3fcd	8.1fcd	5.2fcd	3.6fcd	2.6fcd	2fcd	1.6fcd	1.3fcd	1.1fcd	0.9fcd	0.8fcd	0.7fcd	0.6fcd	0.5fcd	0.4fcd	0.4fcd	0.4fcd	0.3fcd

#### Intensities in 0° c-plane

0°	2°	4°	6°	8°	10°	12°	14°	16°	18°	20°	22°	24°	26°	28°	30°	32°	34°	36°	38°
1387	1382	1373	1357	1334	1304	1270	1232	1190	1145	1097	1045	993	938	880	815	708	562	402	253
100%	100%	99%	98%	96%	94%	92%	89%	86%	83%	79%	75%	72%	68%	63%	59%	51%	41%	29%	18%

#### Intensities in 90° c-plane

0°	2°	4°	6°	8°	10°	12°	14°	16°	18°	20°	22°	24°	26°	28°	30°	32°	34°	36°	38°
1387	1383	1373	1357	1334	1305	1271	1232	1191	1147	1099	1049	997	945	888	821	721	571	406	255
100%	100%	99%	98%	96%	94%	92%	89%	86%	83%	79%	76%	72%	68%	64%	59%	52%	41%	29%	18%

#### Intensities in 180° c-plane

0°	2°	4°	6°	8°	10°	12°	14°	16°	18°	20°	22°	24°	26°	28°	30°	32°	34°	36°	38°
1387	1382	1373	1357	1334	1304	1270	1232	1190	1145	1097	1045	993	938	880	815	708	562	402	253
100%	100%	99%	98%	96%	94%	92%	89%	86%	83%	79%	75%	72%	68%	63%	59%	51%	41%	29%	18%

#### Intensities in 270° c-plane

0°	2°	4°	6°	8°	10°	12°	14°	16°	18°	20°	22°	24°	26°	28°	30°	32°	34°	36°	38°
1387	1383	1373	1357	1334	1305	1271	1232	1191	1147	1099	1049	997	945	888	821	721	571	406	255
100%	100%	99%	98%	96%	94%	92%	89%	86%	83%	79%	76%	72%	68%	64%	59%	52%	41%	29%	18%

Beam angle 50%	Field angle 10%	Cutoff angle 2,5%	Intensity ratio in 120° cone	Intensity ratio in 90° cone
66.5°	85.7°	123.6°	97.2%	91.9%