

alphabet

PROJECT INFORMATION		
JOB NAME		TYPE
ORDERING CODE		

NU1

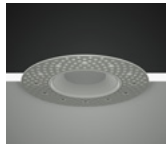
1" Round Wall Wash Warm Dim



WW BEAM			
(Note: Specifications are subject to change without notice)			
6mm COB PERFORMANCE DATA			
LED LIGHT ENGINE	NOMINAL DELIVERED LUMENS	DRIVE CURRENT	LED WATTAGE
05LM	320LM @30K/97CRI	175mA	6.5W
07LM	490LM @30K/97CRI	275mA	10W
Notes	Delivered lumens based on WW optic		



Trim



Trimless



Trimless Millwork

FEATURES

- Light uniformity from ceiling line to floor with no scalloping
- 3' set back with 3' on center spacing - 18 FC average (10' AFF)
- Placement of light intensity at any desired wall location
- Wide range of spacing flexible provides ability to navigate ceiling obstructions

DIMMING AND CONTROLS

- eldoLED flicker free 0-10V dimming to 0% and 1%
- eldoLED flicker free DALI 2 dimming to 0% and 1%
- Lutron Hi-lumen 2-Wire (Eco System) dimming to 0.1% and 1%
- Leading & trailing edge (Triac/ELV) dimming to 1%
- All driver offerings are remote with above ceiling access, see page 3 for details.
- Refer to DX remote panels for additional options.

CONSTRUCTION

- High-grade die-cast and cold forged aluminum alloy assembly that has superior thermal and corrosion resistance properties.
- Shatter proof acrylic bezel lens
- Electrocoated 16-gauge cold-rolled steel construction
- Accommodates ceiling thickness from 1/8" to 1-1/2", On-field thick ceiling adjustment, see page 7
- Fixture is pre-set and shipped at 30deg tilt

LED

- Luminus Dim-to-warm COB:
- 97 CRI: SDCM = 3-step MacAdam Ellipse, Lumen Maintenance: L₇₀ > 54,000 hrs

LISTING

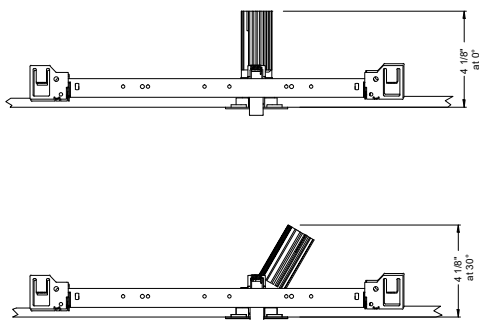
- ULus Listed to UL1598 & UL2108; cUL Listed to CSA C22.2 #250.0
- IP44 with lens - Suitable for wet locations with lens - Suitable for damp locations without lens
- NSF/ANSI-2 with lens (Non-Food and Splash Zones)
- 5 Year Limited warranty

ELECTRICAL

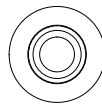
- Low voltage luminaire: 36Vdc nominal
- 05LM - 175mA
- 07LM - 275mA

FIXTURE HEIGHT

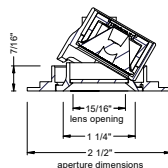
LED LIGHT ENGINE: 05LM - 07LM



TRIMMED

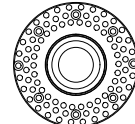


ceiling cutout
2-1/8" diameter
ceiling thickness
1/8" to 1-1/2"

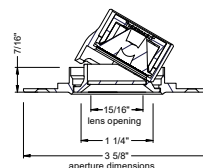


aperture dimensions

TRIMLESS



ceiling cutout
2-1/8" diameter
ceiling thickness
1/8" to 1-1/2"

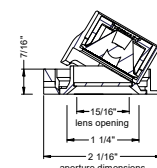


aperture dimensions

MILLWORK



ceiling cutout
2-1/8" diameter
ceiling thickness
1/8" to 1-1/2"



aperture dimensions

alphabet

PROJECT INFORMATION		
JOB NAME		TYPE
ORDERING CODE		

WW BEAM ORDERING CODE				
SERIES	NU1	NU1		
TYPE	RW	round wall wash		
	RWT	round wall wash trimless		
	RWTMW	round wall wash trimless millwork		
LED	WD	warm dim (Luminus)		
DELIVERED LUMENS	05LM	320 lm		
	07LM	490 lm		
Standard Configuration: 3000K 97CRI Calculated Delivered Lumens = [Delivered Lumen Value] x [CCT Multiplier]				
CCT	3018	3000K, dim to 1800K		
		CCT at Light Level (%LF)		
		%LF	07LM	05LM
		100%	3000	3000
		50%	3000	3000
		25%	2800	2800
10%	2200	2200		
5%	1800	1800		
CRI	97	97 CRI		
OPTIC & LM MULTIPLIER SEE PAGE 5	WW	wall wash with diffused angle bending lens		
TRIM COLOR SEE PAGE 2	BK	black		
	WH	white		
	MC	matte chrome		
	BZ	bronze		
	WT	wheat		
	CC¹	custom color, consult factory for details		
Antimicrobial finish, add AM to black, white or matte chrome i.e. BKAM.				
Not applicable to trimless option. Do not include in trimless ordering code.				
BEZEL COLOR SEE PAGE 2	BK	black (0.98)		
	WH	white (1.00)		
	MC	matte chrome (0.99)		
	BZ	bronze (0.98)		
	WT	wheat (0.99)		
	CC¹	custom color, consult factory for details		
Antimicrobial finish, add AM to black, white or matte chrome i.e. BKAM.				

WW BEAM ORDERING CODE		
MOUNTING OPTIONS SEE PAGE 6, 7	NC	new construction with ceiling fitting plate
	NCINH²	new construction with ceiling fitting plate, IC rated, inherently protected
	IC²	insulation contact housing
	ICAT²	insulation contact/airtight housing
	CP²	chicago plenum housing
	RET	retrofit, no ceiling fitting plate
	RETINH²	retrofit, no ceiling fitting plate, IC rated, inherently protected
	remote driver housing only	
VOLTAGE	LVL	low voltage luminaire
DIMMING	ND	No Driver Included. Customer to Supply PoE system components or order remote driver separately. Refer to POE/Remote Driver reference sheet for additional details.

ADDITIONAL MOUNTING INFO	
New Construction Bar Hangers (included)	Mounting Length: 14-3/4" to 26"
Extension Kit p/n: K20266 (ordered separately, 1 per fixture)	Extends a pair of Bar Hangers Total Mounting Length: 29" to 48"

YOUR COMPLETED ORDERING CODE
Follow the steps to specify your fixture, example: NU1 - RW - WD - 07LM - 3018 - 97 - WW - WH - WH - NC - LVL - ND

NOTES

1. Custom set up fee plus minimum quantity required per color.
2. IC/ICAT/CP/NCINH/RETINH available in 05LM.

TRIM OPTIONS

TRIM/BEZEL COLORS



WH



MC



BK



BZ



WT

alphabet

PROJECT INFORMATION		
JOB NAME		TYPE
ORDERING CODE		

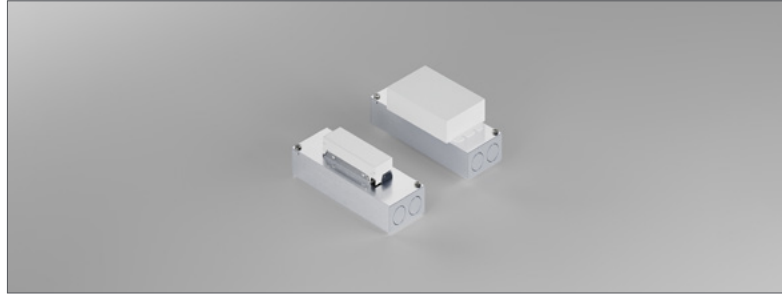
REMOTE DRIVER - ORDERING CODE		
SERIES	DX-C	compact driver box
NUMBER OF DRIVERS	1-5	number of drivers, 1-5
CURRENT	175	175mA
	275	275mA
VOLTAGE	120	120V
	UNV	120V-277V
DIMMING	DIM10	eldoLED flicker free 0-10V dimming to 1%
	DIM10Z	eldoLED flicker free 0-10V dimming to 0%
	DALI	eldoLED flicker free DALI 2 dimming to 1%
	DALIZ	eldoLED flicker free DALI 2 dimming to 0%
	DMX-RJ45¹	DMX control dimming to 0.1% with RJ45 connection
	DMX-WL¹	DMX control dimming to 0.1% with wire lead connection
	DMX-XLR¹	DMX control dimming to 0.1% with XLR 5pin connection
	LUT	Lutron Hi-lume Ecosystem dimming to 1%, Soft-on & Fade-to-Black
	LUTP	Lutron Hi-lume Premier Ecosystem dimming to 0.1%, Soft-on & Fade-to-Black
	ELV²	leading & trailing edge (Triac/ELV) dimming to 1%
NLT	nLight control interface: standard Cat-5/RJ45 connection (female), dim to off	
CAS³	Casambi Bluetooth control with flicker free 1% dimming	
AWN⁴	lutron athena wireless node	
ELECTRICAL OPTIONS	EM⁵	Remote emergency battery backup, 90 minutes at 7 watts to LED, Remote TS

WW BEAM		
(Note: Specifications are subject to change without notice)		
6mm COB PERFORMANCE DATA		
LED LIGHT ENGINE	NOMINAL DELIVERED LUMENS	SYSTEM WATTAGE
05LM	320LM @30K/97CRI	8W
07LM	490LM @30K/97CRI	12W
Notes	Delivered lumens based on WW optic	

ELECTRICAL/CONTROLS

- 120V-277V, 120 only Triac / ELV
- Power factor ≥ 0.9
- 2kV driver input surge protection
- Remote emergency test switch
- 7W, 10W (T20 CEC) and 12W EM 90min battery
- Max. ambient installation temperature 95°F (35°C)
- Minimum wire gauge approved mounting distance 18 AWG, 330 feet
- Maximum Remote mounting distance of EM driver shall be 50 feet

REMOTE SINGLE DRIVER BOX

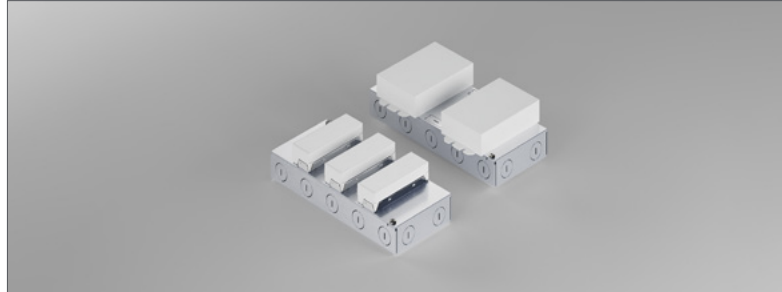


YOUR COMPLETED ORDERING CODE
Follow the steps to specify your fixture, example:
DX-C - 1 - 275 - UNV - DIM10 - EM7

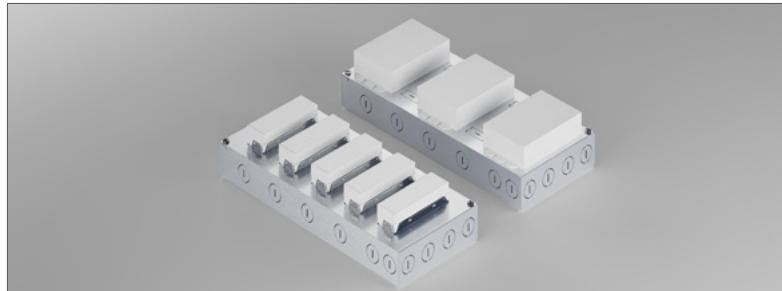
NOTES

1. DMX available only in DX-C-1.
 2. ELV available in 120V.
 3. All drivers on single Casambi dimming circuit.
 4. AWNR reference page 9, for product specification on Athena wireless node.
 5. EM available only with DX-C-1. Box size same as DX-C-2, with one driver and one battery.
- * EldoLED uses logarithmic dimming curve as standard. For linear dimming curve, add "LIN" after dimming code, i.e. DIM10LIN.

REMOTE 2 TO 3 DRIVER BOX (2 Drivers for DIM10Z/DALI/DALIZ/LUT/LUTP) (1 Driver + EM)



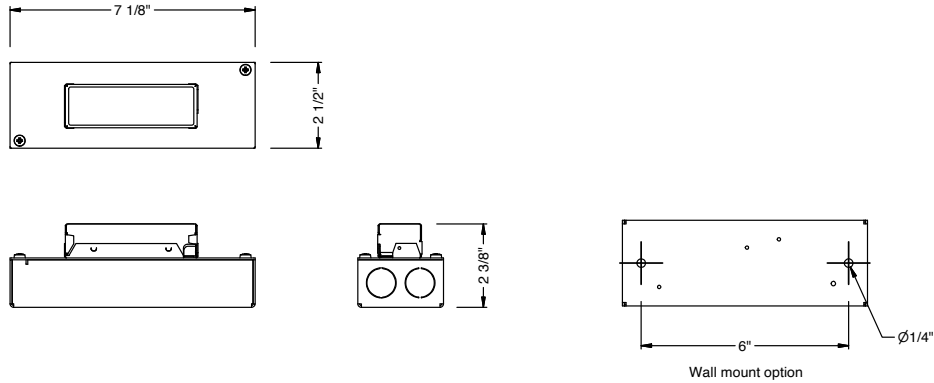
REMOTE 4 TO 5 DRIVER BOX (3 Drivers for DIM10Z/DALI/DALIZ/LUT/LUTP)



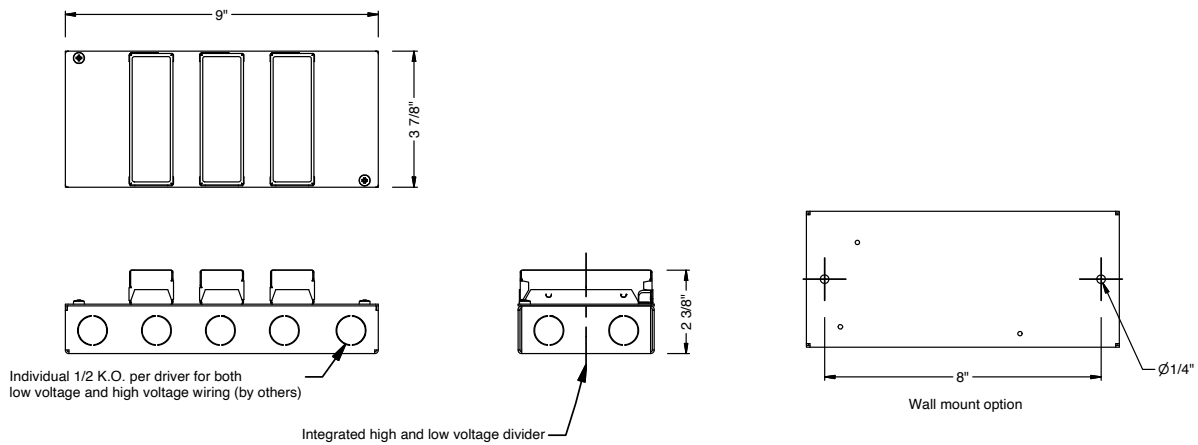
PROJECT INFORMATION		
JOB NAME		TYPE
ORDERING CODE		

DRIVER BOXES

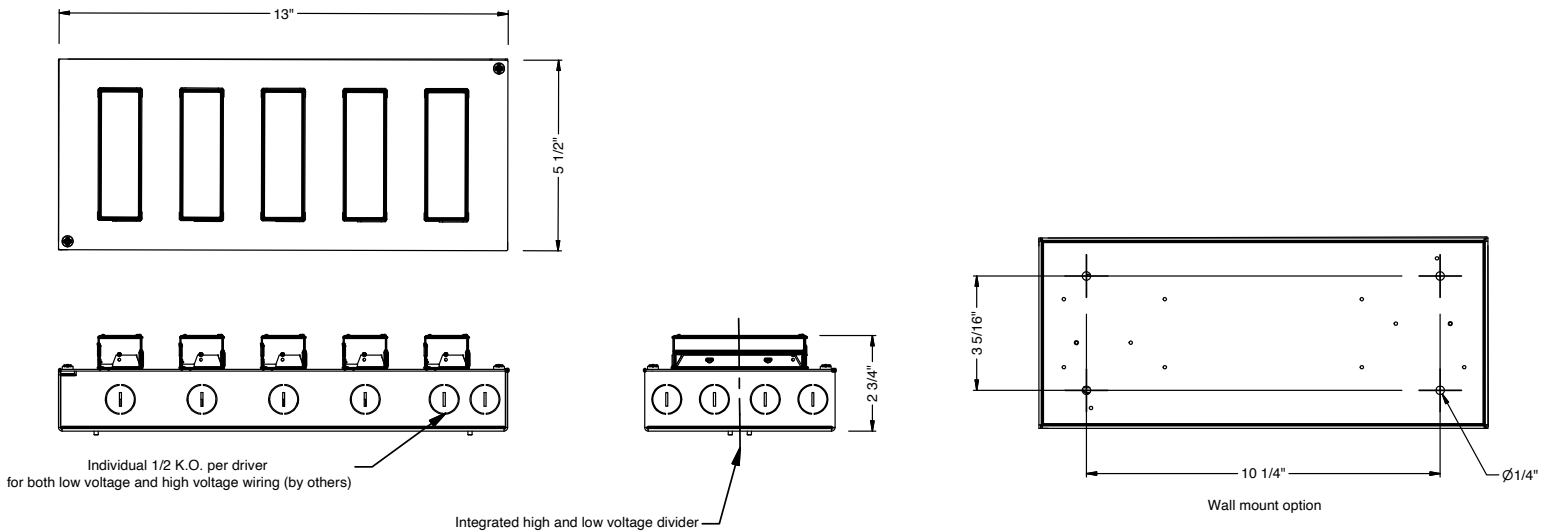
REMOTE SINGLE DRIVER BOX



REMOTE 2 TO 3 DRIVER BOX (2 Drivers for DIM10Z/DALI/DALIZ/LUT/LUTP)



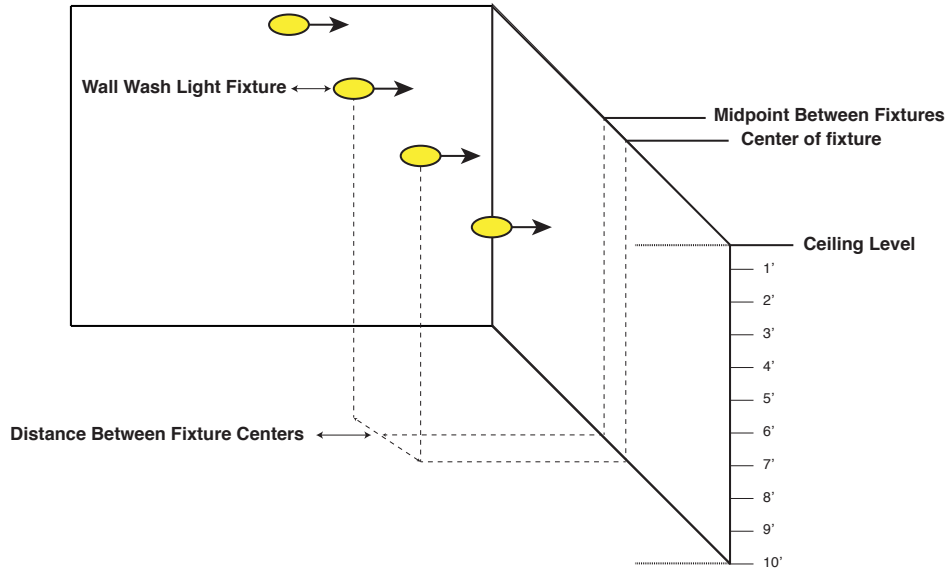
REMOTE 4 TO 5 DRIVER BOX (3 Drivers for DIM10Z/DALI/DALIZ/LUT/LUTP)



alphabet

PROJECT INFORMATION		
JOB NAME		TYPE
ORDERING CODE		

PHOTOMETRIC DATA DIAGRAM



PHOTOMETRIC DATA CHARTS

FOOT CANDLE MEASUREMENT

WARM DIM WALL WASH 07LM 97CRI 3000K

MOUNTING DISTANCE	2' FROM WALL						3' FROM WALL						4' FROM WALL					
	2' ON CENTER		3' ON CENTER		4' ON CENTER		2' ON CENTER		3' ON CENTER		4' ON CENTER		3' ON CENTER		4' ON CENTER		6' ON CENTER	
FIXTURE SPACING																		
DISTANCE FROM CEILING	CENTER	MID POINT	CENTER	MID POINT	CENTER	MID POINT	CENTER	MID POINT	CENTER	MID POINT	CENTER	MID POINT	CENTER	MID POINT	CENTER	MID POINT	CENTER	MID POINT
1'	14.6	14.3	11.1	8.2	10.2	4.5	3.7	3.7	2.6	2.5	2.2	1.6	0.6	0.6	0.5	0.4	0.5	0.2
2'	27.7	27.8	19.8	18.1	17	11.8	13.3	13.7	9.6	9.5	7.6	6.8	4.7	4.7	3.7	3.6	2.8	2.1
3'	24.2	24.6	17.4	16.9	14.1	12.1	16.7	17.2	12.3	12.4	9.6	9.2	7.6	7.8	6	6	4.4	3.7
4'	17.4	17.7	12.8	12.8	10.1	9.6	15.3	15.8	11.6	11.8	9.2	9	8.7	8.9	6.9	7	5	4.5
5'	11.9	12.2	9	9.2	7.1	7.1	12.5	12.8	9.7	9.9	7.7	7.8	8.3	8.5	6.7	6.8	4.8	4.6
6'	8.2	8.4	6.4	6.5	5.1	5.2	9.6	9.9	7.7	7.9	6.2	6.3	7.3	7.6	6	6.1	4.3	4.2
7'	5.7	5.8	4.6	4.7	3.8	3.9	7.3	7.5	6	6.1	4.9	5	6.2	6.4	5.2	5.3	3.8	3.7
8'	4.1	4.2	3.4	3.5	2.8	2.9	5.5	5.6	4.6	4.8	3.9	4	5.1	5.3	4.3	4.4	3.2	3.2
9'	3	3.1	2.6	2.6	2.2	2.2	4.2	4.3	3.6	3.7	3.1	3.2	4.2	4.3	3.6	3.7	2.7	2.7
10'	2.3	2.3	2	2	1.7	1.7	3.3	3.3	2.9	2.9	2.5	2.5	3.4	3.5	3	3	2.3	2.3

WARM DIM WALL WASH 05LM 97CRI 3000K

MOUNTING DISTANCE	2' FROM WALL						3' FROM WALL						4' FROM WALL					
	2' ON CENTER		3' ON CENTER		4' ON CENTER		2' ON CENTER		3' ON CENTER		4' ON CENTER		3' ON CENTER		4' ON CENTER		6' ON CENTER	
FIXTURE SPACING																		
DISTANCE FROM CEILING	CENTER	MID POINT	CENTER	MID POINT	CENTER	MID POINT	CENTER	MID POINT	CENTER	MID POINT	CENTER	MID POINT	CENTER	MID POINT	CENTER	MID POINT	CENTER	MID POINT
1'	9.5	9.3	7.2	5.4	6.6	3	2.4	2.4	1.7	1.6	1.4	1	0.4	0.4	0.3	0.3	0.3	0.1
2'	18	18.1	12.9	11.8	11	7.7	8.7	8.9	6.2	6.2	5	4.4	3	3.1	2.4	2.3	1.8	1.3
3'	15.7	16	11.3	11	9.2	7.8	10.8	11.2	8	8	6.3	6	5	5.1	3.9	3.9	2.9	2.4
4'	11.3	11.5	8.3	8.3	6.6	6.2	10	10.3	7.6	7.7	6	5.9	5.6	5.8	4.5	4.5	3.2	2.9
5'	7.7	7.9	5.9	6	4.6	4.6	8.1	8.4	6.3	6.4	5	5	5.4	5.6	4.4	4.4	3.1	3
6'	5.3	5.4	4.2	4.3	3.3	3.4	6.3	6.4	5	5.1	4.1	4.1	4.8	4.9	3.9	4	2.8	2.7
7'	3.7	3.8	3	3.1	2.5	2.5	4.7	4.9	3.9	4	3.2	3.3	4	4.1	3.4	3.4	2.4	2.4
8'	2.7	2.7	2.2	2.3	1.8	1.9	3.6	3.7	3	3.1	2.5	2.6	3.3	3.4	2.8	2.9	2.1	2.1
9'	2	2	1.7	1.7	1.4	1.5	2.7	2.8	2.4	2.4	2	2.1	2.7	2.8	2.3	2.4	1.7	1.8
10'	1.5	1.5	1.3	1.3	1.1	1.1	2.1	2.2	1.9	1.9	1.6	1.6	2.2	2.3	1.9	2	1.5	1.5

NOTE

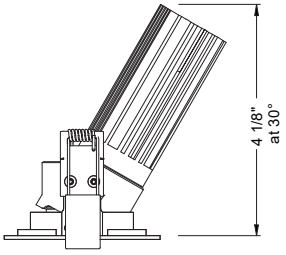
1. Performance based on typical reflectance values and room dimensions. IES files available at ledrabrands.com

PROJECT INFORMATION		
JOB NAME		TYPE
ORDERING CODE		

MOUNTING OPTIONS

FIXTURE HEIGHT

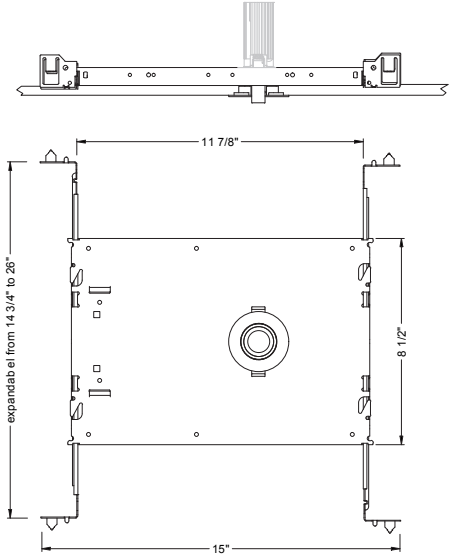
05LM - 07LM



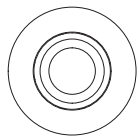
TRIMMED, TRIMLESS & MILLWORK

NC - NEW CONSTRUCTION

TRIM

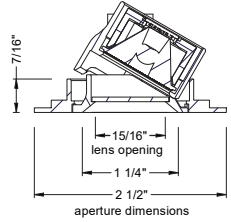


TRIM

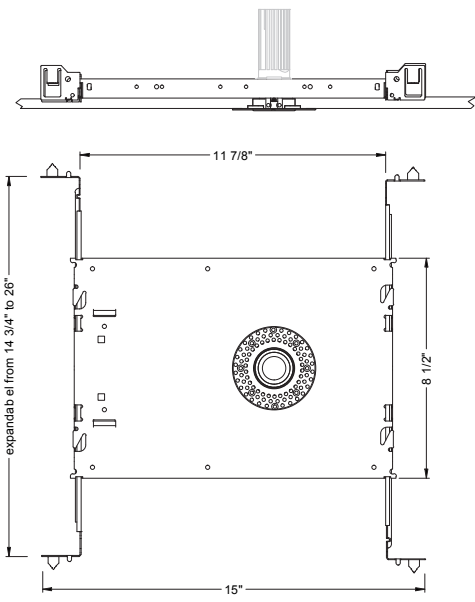


ceiling cutout
2-1/8" diameter

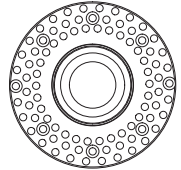
ceiling thickness
1/8" to 1-1/2"



TRIMLESS

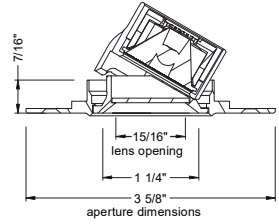


TRIMLESS

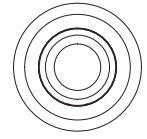


ceiling cutout
2-1/8" diameter

ceiling thickness
1/8" to 1-1/2"

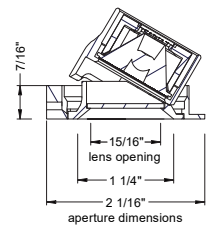


TRIMLESS/MILLWORK



ceiling cutout
2-1/8" diameter

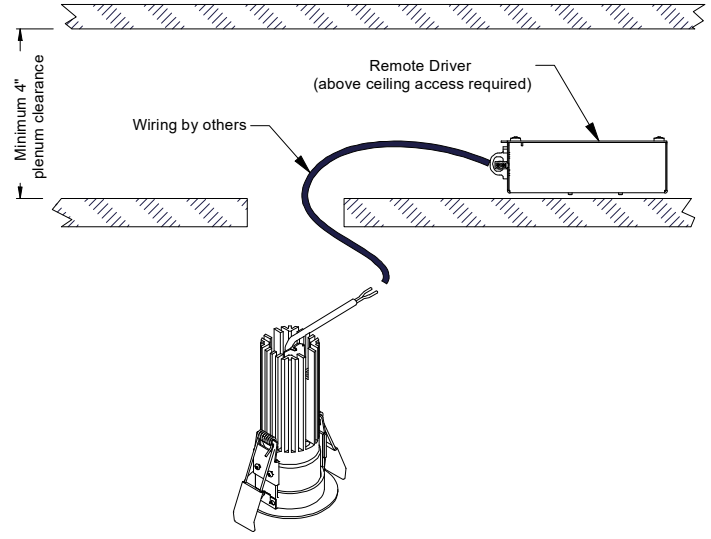
ceiling thickness
1/8" to 1-1/2"



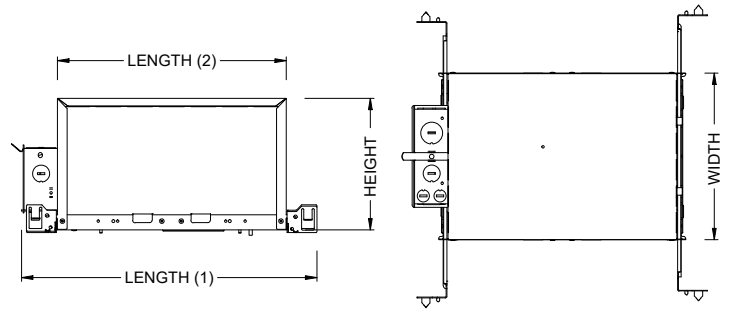
PROJECT INFORMATION		
JOB NAME	TYPE	
ORDERING CODE		

MOUNTING OPTIONS

RET - RETRO TRIM/TRIMLESS



IC - INSULATION CONTACT HOUSING ICAT - INSULATION CONTACT / AIR TIGHT CP - CHICAGO PLENUM

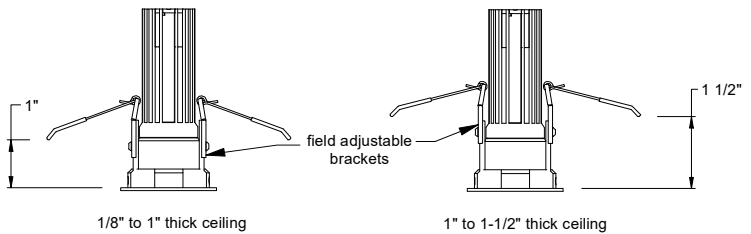


BOX SIZE	L1	L2	W	H
A	15 - 7/16"	11 - 3/4"	8 - 1/2"	6 - 3/4"

RATINGS / CERTIFICATIONS	NC	RET	IC	ICAT	CP
TYPE NON-IC	✓	✓			
TYPE IC			✓	✓	✓
CHICAGO PLENUM (CCEA)					✓
SUITABLE FOR AIR HANDLING PLENUMS				✓	✓
REDUCED AIRFLOW ASTM E283				✓	✓

BOX TYPE / LUMEN OUTPUT - STANDARD BEAMS (12°-60°)			
LUMEN OUTPUT	BOX - A		
	CP	IC	ICAT
05LM	✓	✓	✓
07LM			

FIXTURE TYPE	CEILING THICKNESS		
	MOUNTING TYPE		
	NC, IC, ICAT, CP, RET	NC, IC, ICAT, CP, RET	NC, IC, ICAT, CP, RET
	STANDARD CEILING THICKNESS	THICK CEILING THICKNESS	CEILING CUTOUT
TRIM	1/8" to 1.0"	1.0" to 1 1/2"	2-1/8" diameter
TRIMLESS	1/8" to 1.0"	1.0" to 1 1/2"	2-1/8" diameter
MILLWORK (TRIMLESS)	1/8" to 1.0"	1.0" to 1 1/2"	2-1/8" diameter



FIXTURE TILT INFO	
TILT	CEILING THICKNESS
0° TO 30°	1/8" to 1.0"
0° TO 20°	1.0" to 1 1/2"

PROJECT INFORMATION		
JOB NAME		TYPE
ORDERING CODE		

BATTERY OPTIONS

EMERGENCY BATTERY

IOTA's ILB Battery Backups are UL Listed LED emergency drivers that allow the same LED fixture to be used for both normal and emergency operation. In the event of a power failure, the ILB switches to the emergency mode and operates the existing fixture for 90 minutes. The unit contains a battery, charger, and converter circuit in a single can. The Constant Power design of the ILB maintains the output wattage to the LED array even as the system voltage diminishes. UL 924 Listed for U.S. and Canada. UL 1310 Certified, Output Class 2 Compliant. Includes single-piece TBTS test switch and charge indicator accessory kit. For use with switched and unswitched fixtures, and includes Two-wire universal AC input. Meets or exceeds all National Electric Code and Life Safety Code Emergency Lighting Requirements. Rated for use in Plenum, Damp Location, Recessed Type IC, and Enclosed and Gasketed Luminaires.

REMOTE TEST SWITCH

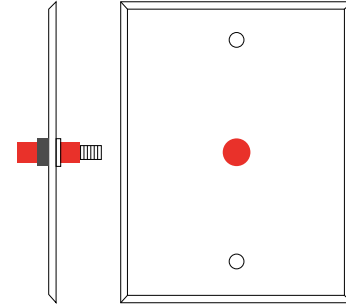
The Remote Test Switch may be mounted adjacent to the LED Fixture by others.

EMERGENCY BATTERY ACCESS

Above ceiling access is recommended for ease of service, but LED Fixture Sizes of 4" and Larger are capable of below ceiling access. IC/ICAT/CP Box and ITS option require an access panel in the ceiling (or other form of access) adjacent to the installation location of the Emergency Battery.

REMOTE LOCATION

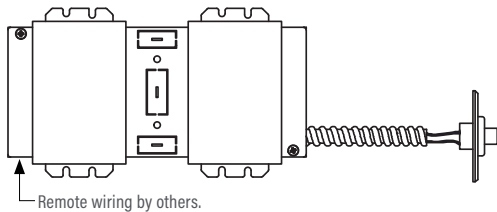
Maximum remote mounting distance of the emergency driver shall be 50 feet. Remote location wiring provided by others. Follow all Local and National Electric/ Building Codes.



Remote Test Switch

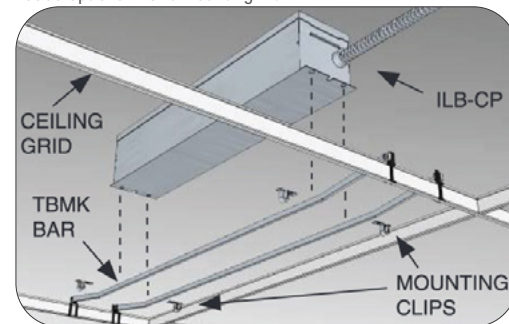
EM MODE OUTPUT (DELIVERED LUMENS)	
LUMEN ORDERING CODE	EM7
ALL OPTIONS (05LM TO 07LM)	300
Notes:Based on 30K, 97CRI	

REMOTE EM BATTERY (REMOTE TEST SWITCH)



Accessory

76066 Optional T-Grid Mounting Kit¹



1. Can be used with any of the Emergency Battery Backups. Must be ordered as a separate line item.

PROJECT INFORMATION		
JOB NAME	TYPE	
ORDERING CODE		

AWNRR OPTIONS

Athena Wireless Node

The Athena wireless node is a radio frequency (RF) device that enables simple, digital control of individual light fixtures in an Athena control system.



Athena Wireless Node RF

AWNRR

Plenum rated and can be installed above the ceiling for wireless control of a fixture without any impact on fixture aesthetics.

FEATURES

- Enables individual, wireless control of each fixture in an Athena control system. Accommodates zone and control changes without rewiring.
- Installed at factory – no wiring required on-site. Fixture is ready to communicate wirelessly once power is connected.
- All drivers on the link are controlled as a single zone.

REGULATORY APPROVALS

- cULus Listed (UL916)
- Complies with requirements for use in other spaces used for environmental air (plenums) per NEC® 2014 300.22(C)(3).
- FCC compliant with the limits for a Class B digital device.
- IC (Industry Canada)
- ANSI C137.1 0-10 V- Electronic Off

POWER / LOAD

- IEC SELV/NEC® Class 2
- 1 Watt

ENVIRONMENTAL

- Ambient operating temperature (immediate vicinity of Athena wireless node): **32 °F to 131 °F** (0 °C to 55 °C), 0% to 90% humidity.

BATTERY OPTIONS

- For EM options please consult factory.

Note: Default behavior prior to programming

- Light level 100%
- Athena wireless node performs an unprogrammed startup sequence on every power up until the device is added to an Athena system.
- Each Athena wireless node should be installed within 25 ft (7.62 m) of two or more Athena wireless nodes or other Clear Connect – Type X devices.
- For Chicago plenum installations, the Athena wireless node may not be installed in the plenum space. It must be installed in the occupied space.

For servicing the driver/j-box, access above ceiling is required. (NC Mounting)

IC/ICAT/CP not available in AWNR.