

# alphabet

PROJECT INFORMATION		
JOB NAME		TYPE
ORDERING CODE		

## NU1

### 1" Round Downlight Tunable White



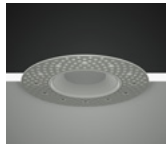
20° - 60° BEAM (Note: Specifications are subject to change without notice)			
6mm COB PERFORMANCE DATA			
LED LIGHT ENGINE	NOMINAL DELIVERED LUMENS	DRIVE CURRENT	LED WATTAGE
07LM	730LM @30K/95CRI	175mA	7W
Notes	Delivered lumens based on 60D optic with no lens, (see page 2)		



eldoLED  
your moment, our drive



Trim



Trimless



Trimless Millwork

#### FEATURES

- 3/8" bezel regress with 1/16" micro flange
- 20° - 60° optical beam control
- UGR < 19
- Up to 70 LPW
- Glare control, specialty optics, trim options, and custom finishes available
- Microban® antimicrobial finish available on all exposed painted surfaces

#### LED

- Luminus tunable white COB from 2700K - 6500K: 95 CRI, R9 > 70: SDCM = 4-step MacAdam Ellipse; Lumen Maintenance: L<sub>70</sub> > 54,000 hrs

#### DIMMING AND CONTROLS

- eldoLED flicker free 0-10V dimming to 0%
- eldoLED flicker free DALI dimming to 0%
- Casambi bluetooth dimming to 0%
- NLight control interface dimming to 0%
- All driver offerings are remote with above ceiling access, see page 3 for details.
- Refer to DX remote panels for additional options.

#### LISTING

- ULus Listed to UL1598 & UL2108; cUL Listed to CSA C22.2 #250.0
- IP44 with lens - Suitable for wet locations with lens - Suitable for damp locations without lens
- NSF/ANSI-2 with lens (Non-Food and Splash Zones)
- 5 Year Limited warranty

#### CONSTRUCTION

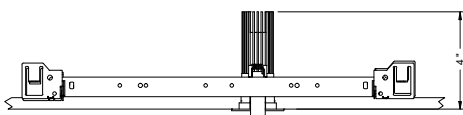
- High-grade die-cast and cold forged aluminum alloy assembly that has superior thermal and corrosion resistance properties.
- Shatter proof acrylic bezel lens
- Electrocoated 16-gauge cold-rolled steel construction
- Accommodates ceiling thickness from 1/8" to 1-1/2", On-field thick ceiling adjustment

#### ELECTRICAL

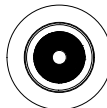
- Low voltage luminaire: 36Vdc nominal
- 07LM - 175mA

#### FIXTURE HEIGHT

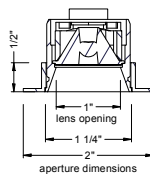
LED LIGHT ENGINE: 07LM



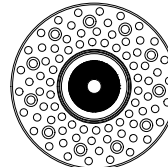
#### TRIMMED



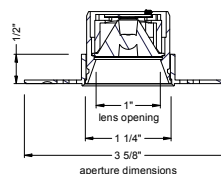
ceiling cutout  
1-3/4" diameter  
ceiling thickness  
1/8" to 1 1/2"



#### TRIMLESS



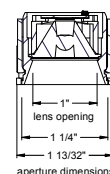
ceiling cutout  
1-3/4" diameter  
ceiling thickness  
1/8" to 1 1/2"



#### MILLWORK



ceiling cutout  
1-7/16" diameter  
ceiling thickness  
1/8" to 1 1/2"



# alphabet

PROJECT INFORMATION		
JOB NAME		TYPE
ORDERING CODE		

ORDERING CODE																										
<b>SERIES</b>	<b>NU1</b>	NU1																								
<b>TYPE</b>	<b>RD</b>	round downlight																								
	<b>RDT</b>	round downlight trimless																								
	<b>RDTMW</b>	round downlight trimless millwork																								
<b>LED</b>	<b>TW</b>	tunable white (Luminus)																								
<b>DELIVERED LUMENS</b>	<b>07LM</b>	730 lm																								
	Standard Configuration: 3000K 60D, NL Calculated Delivered Lumens = [Delivered Lumen Value] x [Optic Multiplier] x [Lens Multiplier]																									
<b>CCT</b>	<b>2765</b>	2700K to 6500K tunable white																								
		<table border="1"> <thead> <tr> <th>CCT</th> <th>2700K</th> <th>3000K</th> <th>3500K</th> <th>4000K</th> <th>5000K</th> <th>5700K</th> <th>6500K</th> </tr> </thead> <tbody> <tr> <td>CCT MULTIPLIER FOR LUMEN OUTPUT</td> <td>0.91</td> <td>0.98</td> <td>1.00</td> <td>0.99</td> <td>1.00</td> <td>1.01</td> <td>1.02</td> </tr> <tr> <td>EML RATIO</td> <td>0.49</td> <td>0.57</td> <td>0.68</td> <td>0.79</td> <td>0.96</td> <td>1.04</td> <td>1.12</td> </tr> </tbody> </table>	CCT	2700K	3000K	3500K	4000K	5000K	5700K	6500K	CCT MULTIPLIER FOR LUMEN OUTPUT	0.91	0.98	1.00	0.99	1.00	1.01	1.02	EML RATIO	0.49	0.57	0.68	0.79	0.96	1.04	1.12
CCT	2700K	3000K	3500K	4000K	5000K	5700K	6500K																			
CCT MULTIPLIER FOR LUMEN OUTPUT	0.91	0.98	1.00	0.99	1.00	1.01	1.02																			
EML RATIO	0.49	0.57	0.68	0.79	0.96	1.04	1.12																			
<b>CRI</b>	<b>95</b>	95 typical, 90 minimum																								
<b>OPTIC &amp; LM MULTIPLIER</b> SEE PAGE 6	<b>20D<sup>1</sup></b>	20 degrees (0.95)																								
	<b>30D</b>	30 degrees (0.95)																								
	<b>40D</b>	40 degrees (0.93)																								
	<b>60D</b>	60 degrees (1.00)																								
<b>BEZEL LENS</b> SEE PAGE 5	<b>NL<sup>2</sup></b>	no lens (1.00)																								
	<b>CL</b>	clear lens (0.95)																								
	<b>DL</b>	diffused lens (0.86)																								
	<b>E<sup>3</sup></b>	elliptical beam spread (0.85)																								
	<b>HCL</b>	honeycomb louver (0.58)																								
	<b>HET</b>	high efficiency textured lens, similar to Solite™ (0.92)																								
	<b>SBL</b>	smoothing beam lens (0.92)																								
	Maximum 2pcs of media per fixture.																									
<b>TRIM COLOR</b> SEE PAGE 5	<b>BK</b>	black																								
	<b>WH</b>	white																								
	<b>MC</b>	matte chrome																								
	<b>BZ</b>	bronze																								
	<b>WT</b>	wheat																								
	<b>CC<sup>4</sup></b>	custom color, consult factory for details																								
	Antimicrobial finish, add <b>AM</b> to black, white or matte chrome i.e. BKAM.																									
	Not applicable to trimless option. Do not include in trimless ordering code.																									
<b>BEZEL COLOR</b> SEE PAGE 5	<b>BK</b>	black (0.98)																								
	<b>WH</b>	white (1.00)																								
	<b>MC</b>	matte chrome (0.99)																								
	<b>BZ</b>	bronze (0.98)																								
	<b>WT</b>	wheat (0.99)																								
	<b>CC<sup>4</sup></b>	custom color, consult factory for details																								
	Antimicrobial finish, add <b>AM</b> to black, white or matte chrome i.e. BKAM.																									

ORDERING CODE		
<b>MOUNTING OPTIONS</b> SEE PAGE 7, 8	<b>NC</b>	new construction with ceiling fitting plate
	<b>IC<sup>5</sup></b>	insulation contact housing
	<b>ICAT<sup>5</sup></b>	insulation contact/airtight housing
	<b>CP<sup>5</sup></b>	chicago plenum housing
	<b>RET</b>	retrofit, no ceiling fitting plate
	remote driver housing only	
<b>VOLTAGE</b>	<b>LVL</b>	low voltage luminaire
<b>DIMMING</b>	<b>ND</b>	No driver included. See page 3 for remote driver options.

YOUR COMPLETED ORDERING CODE	
Follow the steps to specify your fixture, example:	
<b>NU1 - RD - TW - 07LM - 2765 - 95 - 30D - HET - WH - WH - NC - LVL - ND</b>	

## NOTES

- 20D available with DL, E, HET, SBL lens options.
- NL option does not meet requirements for AT/WET/NSF listings.
- Elliptical beam distributions [20D= 40° x 60°, 30D= 45° x 60°, 40D= 50° x 65°, 60D= 65° x 75°]
- Custom set up fee plus minimum quantity required per color.
- IC/ICAT/CP not available in RDTMW.

# alphabet

PROJECT INFORMATION		
JOB NAME		TYPE
ORDERING CODE		

## REMOTE DRIVER - ORDERING CODE

<b>SERIES</b>	<b>DX-C</b>	compact driver box
<b>NUMBER OF DRIVERS</b>	<b>1</b>	number of drivers, 1
<b>CURRENT</b>	<b>175</b>	175mA
<b>VOLTAGE</b>	<b>120</b> <b>UNV</b>	120V 120V-277V
<b>DIMMING</b>	<b>DIM10Z</b>	eldoLED flicker free 0-10V dimming to 0%
	<b>DALIZ</b>	eldoLED flicker free DALI 2 dimming to 0%
	<b>NLT</b>	nLight control interface: standard Cat-5/RJ45 connection (female), dim to off
	<b>CASZ</b>	Casambi Bluetooth dim to zero

20° - 60° BEAM		
(Note: Specifications are subject to change without notice)		
6mm COB PERFORMANCE DATA		
LED LIGHT ENGINE	NOMINAL DELIVERED LUMENS	SYSTEM WATTAGE
07LM	730LM @30K/95CRI	11W
Notes	Delivered lumens based on 60D optic with no lens, (see page 2)	

## YOUR COMPLETED ORDERING CODE

Follow the steps to specify your fixture, example:
<b>DX-C - 1 - 175 - UNV - DIM10Z</b>

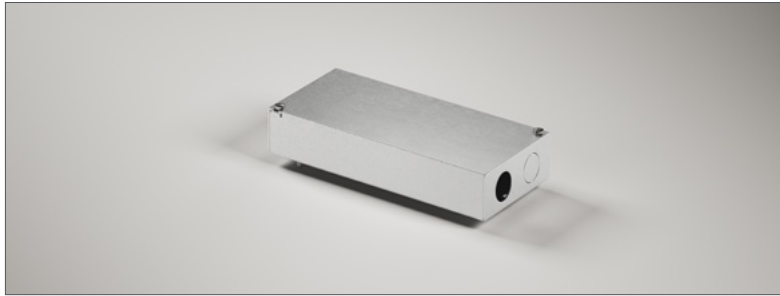
## NOTES

\* EldoLED uses logarithmic dimming curve as standard. For linear dimming curve, add "LIN" after dimming code, i.e. DIM10LIN.

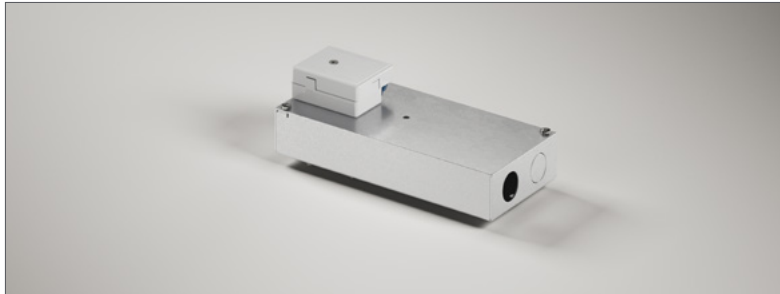
## ELECTRICAL/CONTROLS

- 120V-277V
- Power factor  $\geq 0.9$
- 2kV driver input surge protection
- Max. ambient installation temperature 95°F (35°C)
- Minimum wire gauge approved mounting distance 18 AWG, 330 feet
- Maximum Remote mounting distance of EM driver shall be 50 feet

## REMOTE SINGLE DRIVER BOX (DIM10Z & DALIZ)



## REMOTE SINGLE DRIVER BOX (NLT & CASZ)

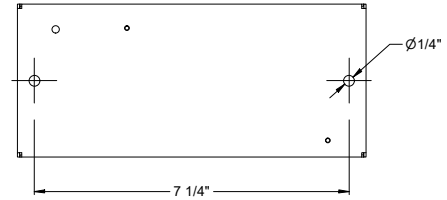
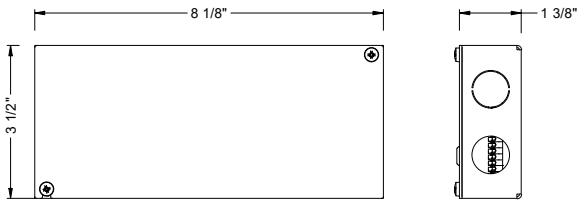


# alphabet

PROJECT INFORMATION		
JOB NAME		TYPE
ORDERING CODE		

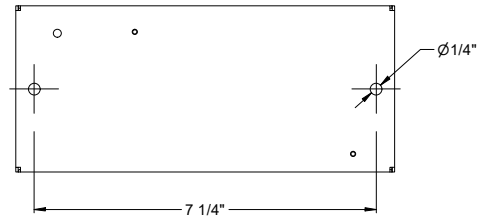
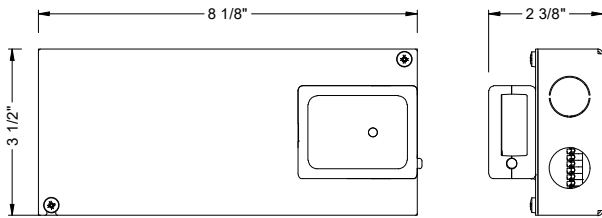
## DRIVER BOXES

### REMOTE SINGLE DRIVER BOX (DIM10Z & DALIZ)



Wall mount option

### REMOTE SINGLE DRIVER BOX (NLT & CASZ)



Wall mount option

# alphabet

PROJECT INFORMATION		
JOB NAME		TYPE
ORDERING CODE		

## TRIM OPTIONS

### TRIM/BEZEL COLORS



## OPTICAL OPTIONS

- UGR calculation based on CIE 117-1995; room size: 4H X 8H, reflectance: 70/50/20;
- UGR calculation based on 07LM BK bezel fixtures, unless otherwise noted.



OPTIC	BEAM ANGLE	UGR
30D	26	11.3
40D	34	13.8
60D	45	19.7



OPTIC	BEAM ANGLE	UGR
30D	32	16.5
40D	43	18.5
60D	57	25



OPTIC	BEAM ANGLE	UGR
30D	30	16.2
40D	40	18.3
60D	56	24.5



OPTIC	BEAM ANGLE	UGR
20D	41	20.2
30D	46	21.6
40D	50	23.2
60D	62	26.1



OPTIC	BEAM ANGLE	UGR
20D	25	15.7
30D	32	17.1
40D	41	19.4
60D	55	24.6



OPTIC	BEAM ANGLE	UGR
20D	23	14.8
30D	31	16.2
40D	40	18.6
60D	55	24.3



OPTIC	BEAM ANGLE	UGR
20D	41x58	20x24
30D	46x62	20x25
40D	49x66	22x26
60D	62x76	25x28

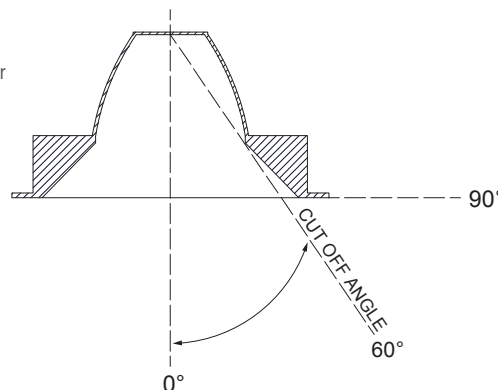
## GLARE CONTROL

### CUT-OFF ANGLE

Visual comfort is achieved with a lower cut-off angle due to improved glare control. The smaller the cut-off angle, the easier it is on the eye.

Alphabet downlights have been thoughtfully engineered to eliminate glare while still delivering functional illumination.

- Cutoff angle of NL and CL is 60 degrees;



# alphabet

PROJECT INFORMATION		
JOB NAME		TYPE
ORDERING CODE		

## PHOTOMETRIC DATA

20D 23° WITH SBL LENS	
Throw Distance (ft)	Beam Diameter (ft)
6	2.5
8	3.3
10	4.1
12	4.9
14	5.8
Illuminance at Center (fc)	
65	
37	
23	
16	
12	
<b>WATTS: 7</b> <b>LPW: 90.2</b> <b>LUMENS: 632</b> <b>CCT: 3000K</b>	
INTENSITY	
DEGREE	CANDELA
0	2346
5	2065
15	814
25	300
35	70
45	25

30D 32° WITH NO LENS	
Throw Distance (ft)	Beam Diameter (ft)
6	3.4
8	4.6
10	5.7
12	6.8
14	8
Illuminance at Center (fc)	
49	
27	
17	
12	
9	
<b>WATTS: 7</b> <b>LPW: 96.9</b> <b>LUMENS: 678</b> <b>CCT: 3000K</b>	
INTENSITY	
DEGREE	CANDELA
0	1747
5	1627
15	939
25	375
35	88
45	25

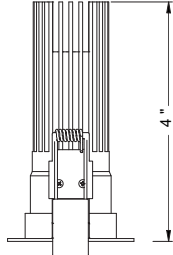
40D 43° WITH NO LENS	
Throw Distance (ft)	Beam Diameter (ft)
6	4.7
8	6.3
10	7.8
12	9.4
14	10.9
Illuminance at Center (fc)	
33	
19	
12	
8	
6	
<b>WATTS: 7</b> <b>LPW: 96.5</b> <b>LUMENS: 676</b> <b>CCT: 3000K</b>	
INTENSITY	
DEGREE	CANDELA
0	1186
5	1155
15	886
25	423
35	111
45	37

60D 57° WITH NO LENS	
Throw Distance (ft)	Beam Diameter (ft)
6	6.5
8	8.7
10	10.8
12	13
14	15.2
Illuminance at Center (fc)	
21	
12	
8	
5	
4	
<b>WATTS: 7</b> <b>LPW: 103.8</b> <b>LUMENS: 727</b> <b>CCT: 3000K</b>	
INTENSITY	
DEGREE	CANDELA
0	755
5	742
15	637
25	452
35	249
45	94

PROJECT INFORMATION		
JOB NAME		TYPE
ORDERING CODE		

## MOUNTING OPTIONS

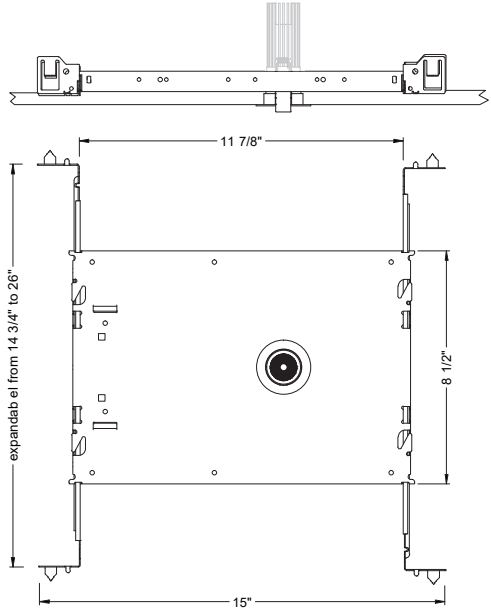
### FIXTURE HEIGHT 07LM LOW LUMENS



TRIMMED, TRIMLESS & MILLWORK

### NC - NEW CONSTRUCTION

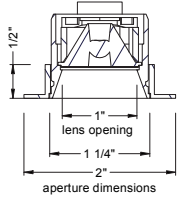
#### TRIM



#### TRIM

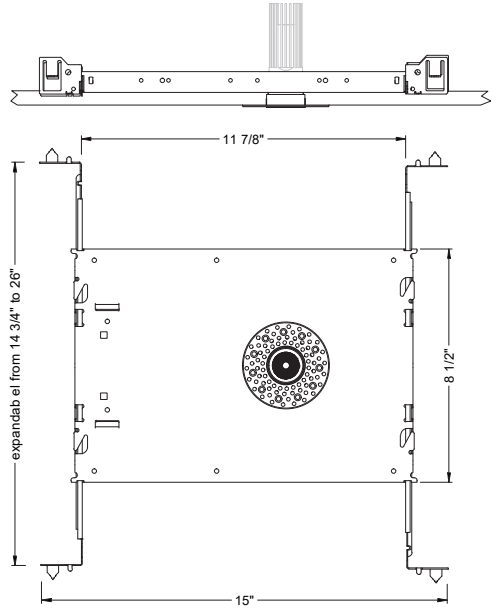


ceiling cutout  
1-3/4" diameter  
ceiling thickness  
1/8" to 1 1/2"

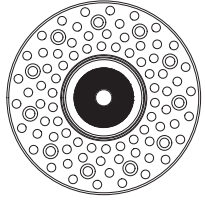


ADDITIONAL MOUNTING INFO	
New Construction Bar Hangers (included)	Mounting Length: 14-3/4" to 26"
Extension Kit p/n: K20266 (ordered separately, 1 per fixture)	Extends a pair of Bar Hangers Total Mounting Length: 29" to 48"

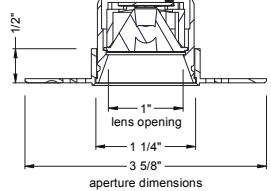
#### TRIMLESS



#### TRIMLESS



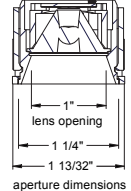
ceiling cutout  
1-3/4" diameter  
ceiling thickness  
1/8" to 1 1/2"



#### TRIMLESS/MILLWORK



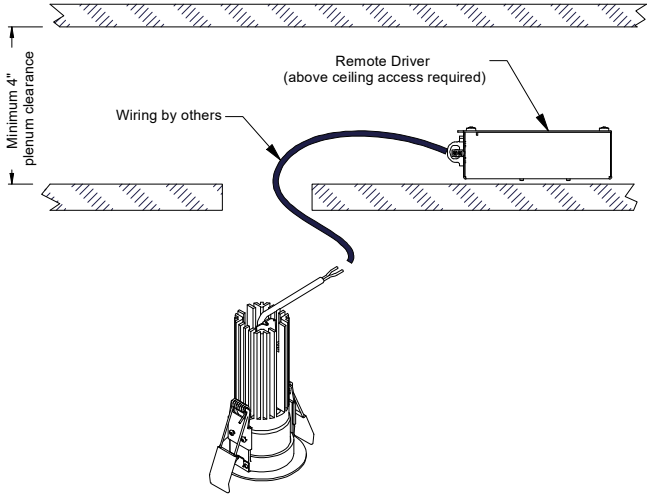
ceiling cutout  
1-7/16" diameter  
ceiling thickness  
1/8" to 1 1/2"



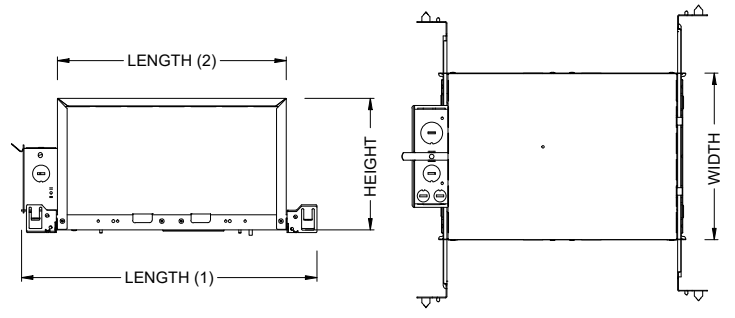
PROJECT INFORMATION		
JOB NAME	TYPE	
ORDERING CODE		

## MOUNTING OPTIONS

### RET - RETRO TRIM/TRIMLESS



### IC - INSULATION CONTACT HOUSING ICAT - INSULATION CONTACT / AIR TIGHT CP - CHICAGO PLENUM



BOX SIZE	L1	L2	W	H
A	15 - 7/16"	11 - 3/4"	8 - 1/2"	6 - 3/4"

RATINGS / CERTIFICATIONS	NC	RET	IC	ICAT	CP
TYPE NON-IC	✓	✓			
TYPE IC			✓	✓	✓
CHICAGO PLENUM (CCEA)					✓
SUITABLE FOR AIR HANDLING PLENUMS				✓	✓
REDUCED AIRFLOW ASTM E283				✓	✓

BOX TYPE / LUMEN OUTPUT - STANDARD BEAMS (12°-60°)			
LUMEN OUTPUT	BOX - A		
	CP	IC	ICAT
07LM	✓	✓	✓

FIXTURE TYPE	CEILING THICKNESS		
	MOUNTING TYPE		
	NC, IC, ICAT, CP, RET	NC, IC, ICAT, CP, RET	NC, IC, ICAT, CP, RET
	STANDARD CEILING THICKNESS	THICK CEILING THICKNESS	CEILING CUTOUT
TRIM	1/8" to 1.0"	1.0" to 1 1/2"	1-3/4" round
TRIMLESS	1/8" to 1.0"	1.0" to 1 1/2"	1-3/4" round
MILLWORK (TRIMLESS)	1/8" to 1.0"	1.0" to 1 1/2"	1-7/16" round

