

# alphabet

PROJECT INFORMATION		
JOB NAME		TYPE
ORDERING CODE		

## NU1

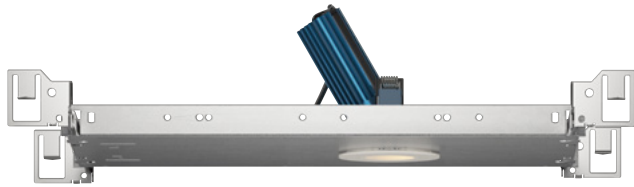
### 1" Round Adjustable Tunable White



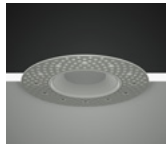
20° - 55° BEAM (Note: Specifications are subject to change without notice)			
6mm COB PERFORMANCE DATA			
LED LIGHT ENGINE	NOMINAL DELIVERED LUMENS	DRIVE CURRENT	LED WATTAGE
07LM	660LM @30K/95CRI	175mA	7W
Notes	Delivered lumens based on 55D optic with no lens, (see page 2)		



eldoLED  
your product your drive



Trim



Trimless



Trimless Millwork

#### FEATURES

- True 30° Tilt with <6% beam disruption (clipping)
- Zero ceiling line obstruction at Full Tilt
- Concentric Tilt Tracking ensures minimal light loss
- 20° - 55° optical beam control
- UGR < 19
- Glare control, specialty optics, trim options, and custom finishes available
- Microban® antimicrobial finish available on all exposed painted surfaces

#### LED

- Luminus tunable white COB from 2700K - 6500K; 95 CRI, R9 > 70; SDCM = 4-step MacAdam Ellipse; Lumen Maintenance: L<sub>70</sub> > 54,000 hrs

#### DIMMING AND CONTROLS

- eldoLED flicker free 0-10V dimming to 0%
- eldoLED flicker free DALI dimming to 0%
- Casambi bluetooth dimming to 0%
- NLight control interface dimming to 0%
- All driver offerings are remote with above ceiling access, see page 3 for details.
- Refer to DX remote panels for additional options.

#### LISTING

- ULus Listed to UL1598 & UL2108; cUL Listed to CSA C22.2 #250.0
- IP44 with lens - Suitable for wet locations with lens - Suitable for damp locations without lens
- NSF/ANSI-2 with lens (Non-Food and Splash Zones)
- 5 Year Limited warranty

#### CONSTRUCTION

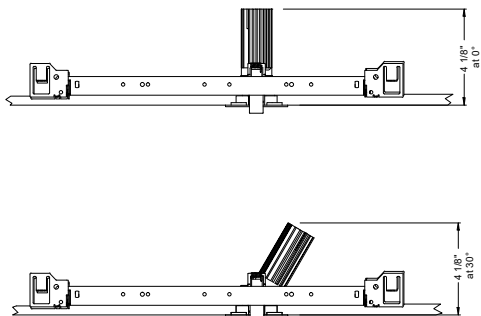
- High-grade die-cast and cold forged aluminum alloy assembly that has superior thermal and corrosion resistance properties.
- Shatter proof acrylic bezel lens
- Electrocoated 16-gauge cold-rolled steel construction
- Accommodates ceiling thickness from 1/8" to 1"

#### ELECTRICAL

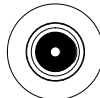
- Low voltage luminaire: 36Vdc nominal
- 07LM - 175mA

#### FIXTURE HEIGHT

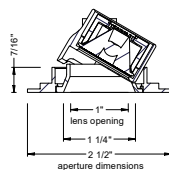
LED LIGHT ENGINE: 07LM



#### TRIMMED

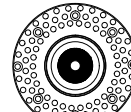


ceiling cutout  
2-1/8" diameter  
ceiling thickness  
1/8" to 1.0"

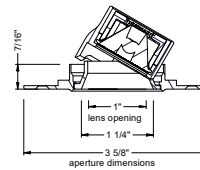


aperture dimensions  
1" lens opening  
1 1/4" lens opening  
2 1/2" aperture dimensions

#### TRIMLESS

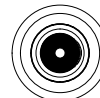


ceiling cutout  
2-1/8" diameter  
ceiling thickness  
1/8" to 1.0"

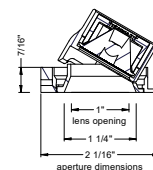


aperture dimensions  
1" lens opening  
1 1/4" lens opening  
3 5/8" aperture dimensions

#### MILLWORK



ceiling cutout  
2-1/8" diameter  
ceiling thickness  
1/8" to 1.0"



aperture dimensions  
1" lens opening  
1 1/4" lens opening  
2 1/16" aperture dimensions

# alphabet

PROJECT INFORMATION		
JOB NAME		TYPE
ORDERING CODE		

		ORDERING CODE																									
<b>SERIES</b>	<b>NU1</b>	NU1																									
<b>TYPE</b>	<b>RA</b>	round adjustable																									
	<b>RAT</b>	round adjustable trimless																									
	<b>RATMW</b>	round adjustable trimless millwork																									
<b>LED</b>	<b>TW</b>	tunable white (Luminus)																									
<b>DELIVERED LUMENS</b>	<b>07LM</b>	660 lm																									
	Standard Configuration: 3000K 55D, NL Calculated Delivered Lumens = [Delivered Lumen Value] x [Optic Multiplier] x [Lens Multiplier]																										
<b>CCT</b>	<b>2765</b>	2700K to 6500K tunable white																									
			<table border="1"> <thead> <tr> <th>CCT</th> <th>2700K</th> <th>3000K</th> <th>3500K</th> <th>4000K</th> <th>5000K</th> <th>5700K</th> <th>6500K</th> </tr> </thead> <tbody> <tr> <td>CCT MULTIPLIER FOR LUMEN OUTPUT</td> <td>0.91</td> <td>0.98</td> <td>1.00</td> <td>0.99</td> <td>1.00</td> <td>1.01</td> <td>1.02</td> </tr> <tr> <td>EML RATIO</td> <td>0.49</td> <td>0.57</td> <td>0.68</td> <td>0.79</td> <td>0.96</td> <td>1.04</td> <td>1.12</td> </tr> </tbody> </table>	CCT	2700K	3000K	3500K	4000K	5000K	5700K	6500K	CCT MULTIPLIER FOR LUMEN OUTPUT	0.91	0.98	1.00	0.99	1.00	1.01	1.02	EML RATIO	0.49	0.57	0.68	0.79	0.96	1.04	1.12
		CCT	2700K	3000K	3500K	4000K	5000K	5700K	6500K																		
CCT MULTIPLIER FOR LUMEN OUTPUT	0.91	0.98	1.00	0.99	1.00	1.01	1.02																				
EML RATIO	0.49	0.57	0.68	0.79	0.96	1.04	1.12																				
<b>CRI</b>	<b>95</b>	95 typical, 90 minimum																									
<b>OPTIC &amp; LM MULTIPLIER</b> SEE PAGE 6	<b>20D<sup>1</sup></b>	20 degrees	(0.91)																								
	<b>30D</b>	30 degrees	(0.91)																								
	<b>40D</b>	40 degrees	(0.92)																								
	<b>55D</b>	55 degrees	(1.00)																								
<b>TIR OPTIC ACCESSORY</b> SEE PAGE 5	<b>NA</b>	no accessory	(1.00)																								
	<b>HCL</b>	honeycomb louver	(0.81)																								
	<b>HETA</b>	high efficiency textured lens, similar to Solite™	(0.91)																								
	<b>EA<sup>2</sup></b>	elliptical lens	(0.82)																								
Maximum 2pcs of media per fixture.																											
<b>BEZEL LENS</b> SEE PAGE 5	<b>NL<sup>3</sup></b>	no lens	(1.00)																								
	<b>CL</b>	clear lens	(0.81)																								
	<b>DL</b>	diffused lens	(0.79)																								
	<b>HET</b>	high efficiency textured lens, similar to Solite™	(0.81)																								
	<b>SBL</b>	smoothing beam lens	(0.81)																								
<b>TRIM COLOR</b> SEE PAGE 5	<b>BK</b>	black																									
	<b>WH</b>	white																									
	<b>MC</b>	matte chrome																									
	<b>BZ</b>	bronze																									
	<b>WT</b>	wheat																									
	<b>CC<sup>4</sup></b>	custom color, consult factory for details																									
Antimicrobial finish, add <b>AM</b> to black, white or matte chrome i.e. BKAM. Not applicable to trimless option. Do not include in trimless ordering code.																											
<b>BEZEL COLOR</b> SEE PAGE 5	<b>BK</b>	black	(0.98)																								
	<b>WH</b>	white	(1.00)																								
	<b>MC</b>	matte chrome	(0.99)																								
	<b>BZ</b>	bronze	(0.98)																								
	<b>WT</b>	wheat	(0.99)																								
	<b>CC<sup>4</sup></b>	custom color, consult factory for details																									
Antimicrobial finish, add <b>AM</b> to black, white or matte chrome i.e. BKAM.																											

		ORDERING CODE	
<b>MOUNTING OPTIONS</b> SEE PAGE 7, 8	<b>NC</b>	new construction with ceiling fitting plate	
	<b>IC</b>	insulation contact housing	
	<b>ICAT</b>	insulation contact/airtight housing	
	<b>CP</b>	chicago plenum housing	
	<b>RET</b>	retrofit, no ceiling fitting plate	
		remote driver housing only	
<b>VOLTAGE</b>	<b>LVL</b>	low voltage luminaire	
<b>DIMMING</b>	<b>ND</b>	No driver included. See page 3 for remote driver options.	

YOUR COMPLETED ORDERING CODE	
Follow the steps to specify your fixture, example:	
<b>NU1 - RA - TW - 07LM - 2765 - 95 - 30D - NA - HET - WH - WH - NC - LVL - ND</b>	

## NOTES

- 20D available with HETA, EA, DL, HET, SBL lens option.
- Elliptical beam distributions [20D= 40° x 55°, 30D= 45° x 60°, 40D= 50° x 65°, 55D= 58° x 72°]
- NL option does not meet requirements for AT/WET/NSF listings. Lensing cannot be added in the field.
- Custom set up fee plus minimum quantity required per color.

# alphabet

PROJECT INFORMATION		
JOB NAME		TYPE
ORDERING CODE		

REMOTE DRIVER - ORDERING CODE		
SERIES	DX-C	compact driver box
NUMBER OF DRIVERS	1	number of drivers, 1
CURRENT	175	175mA
VOLTAGE	UNV	120V-277V
DIMMING	DIM10Z	eldoLED flicker free 0-10V dimming to 0%
	DALIZ	eldoLED flicker free DALI 2 dimming to 0%
	CASZ	Casambi Bluetooth dim to zero
	NLT	nLight control interface: standard Cat-5/RJ45 connection (female), dim to off

20° - 55° BEAM		
(Note: Specifications are subject to change without notice)		
6mm COB PERFORMANCE DATA		
LED LIGHT ENGINE	NOMINAL DELIVERED LUMENS	SYSTEM WATTAGE
07LM	660LM @30K/95CRI	11W
Notes	Delivered lumens based on 55D optic with no lens, (see page 2)	

YOUR COMPLETED ORDERING CODE
Follow the steps to specify your fixture, example:
<b>DX-C - 1 - 175 - UNV - DIM10Z</b>

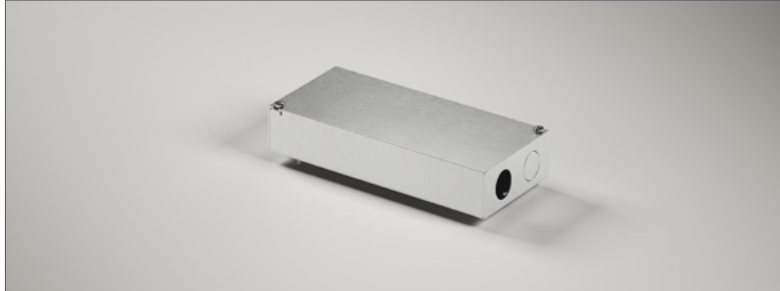
## NOTES

\* EldoLED uses logarithmic dimming curve as standard. For linear dimming curve, add "LIN" after dimming code, i.e. DIM10LIN.

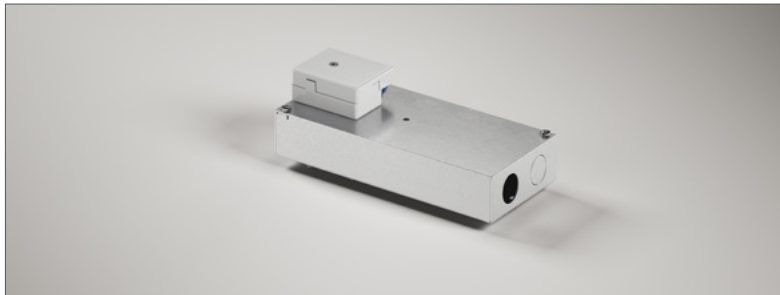
## ELECTRICAL/CONTROLS

- 120V-277V
- Power factor ≥ 0.9
- 2kV driver input surge protection
- Max. ambient installation temperature 95°F (35°C)
- Minimum wire gauge approved mounting distance 18 AWG, 330 feet
- Maximum Remote mounting distance of EM driver shall be 50 feet

## REMOTE SINGLE DRIVER BOX (DIM10Z & DALIZ)



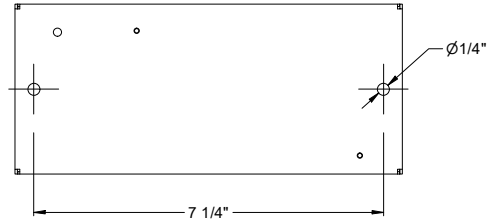
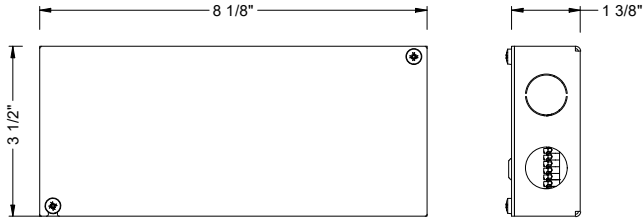
## REMOTE SINGLE DRIVER BOX (NLT & CASZ)



PROJECT INFORMATION		
JOB NAME		TYPE
ORDERING CODE		

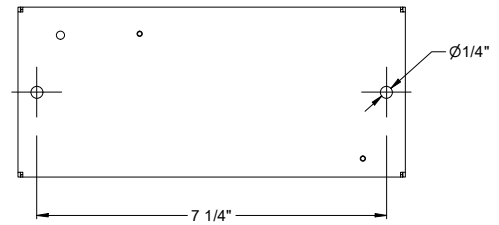
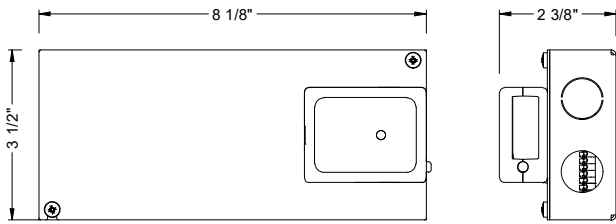
## DRIVER BOXES

### REMOTE SINGLE DRIVER BOX (DIM10Z & DALIZ)



Wall mount option

### REMOTE SINGLE DRIVER BOX (NLT & CASZ)



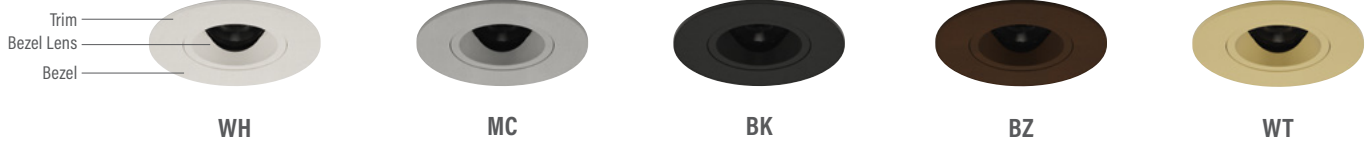
Wall mount option

# alphabet

PROJECT INFORMATION		
JOB NAME		TYPE
ORDERING CODE		

## TRIM OPTIONS

### TRIM/BEZEL COLORS



## OPTICAL OPTIONS

- UGR calculation based on CIE 117-1995; room size: 4H X 8H, reflectance: 70/50/20;
- UGR calculation based on 07LM WH fixtures, unless otherwise noted.



OPTIC	BEAM ANGLE	UGR
30D	26.8	12.4
40D	34.5	14
55D	44	19.4



OPTIC	BEAM ANGLE	UGR
30D	30.2	18.1
40D	42	18.7
55D	54.9	24.6



OPTIC	BEAM ANGLE	UGR
30D	28	16.1
40D	36.4	17.6
55D	52.1	23.9



OPTIC	BEAM ANGLE	UGR
20D	36	21.4
30D	40	22.3
40D	45.1	23.8
55D	58	27.6



OPTIC	BEAM ANGLE	UGR
20D	25.1	17.7
30D	33	18.2
40D	40.1	19.7
55D	53.8	24.6



OPTIC	BEAM ANGLE	UGR
20D	18	16.5
30D	28	16.6
40D	36	17.8
55D	52	24.3



OPTIC	BEAM ANGLE	UGR
20D	39x56	22x25
30D	44x61	22x26
40D	48x64	23x26
55D	58x72	26x28

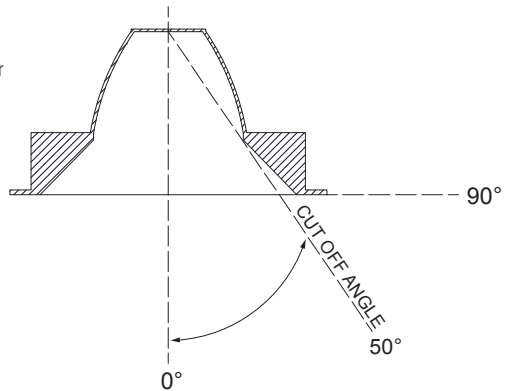
## GLARE CONTROL

### CUT-OFF ANGLE

Visual comfort is achieved with a lower cut-off angle due to improved glare control. The smaller the cut-off angle, the easier it is on the eye.

Alphabet downlights have been thoughtfully engineered to eliminate glare while still delivering functional illumination.

- Cutoff angle of NL and CL is 50 degrees;



# alphabet

PROJECT INFORMATION		
JOB NAME		TYPE
ORDERING CODE		

## PHOTOMETRIC DATA

**20D  
20° SBL LENS**

Throw Distance (ft)	Beam Diameter (ft)
6	1.9
8	2.5
10	3.1
12	3.8
14	4.4

75  
42  
27  
19  
14  
Illuminance at Center (fc)

WATTS: 7	LPW: 64.1
LUMENS: 448	CCT: 3000K
INTENSITY	
DEGREE	CANDELA
0	2707
5	2162
15	617
25	123
35	32
45	12

**30D  
32° NO LENS**

Throw Distance (ft)	Beam Diameter (ft)
6	3.4
8	4.5
10	5.7
12	6.8
14	8

47  
27  
17  
12  
9  
Illuminance at Center (fc)

WATTS: 7	LPW: 86
LUMENS: 602	CCT: 3000K
INTENSITY	
DEGREE	CANDELA
0	1708
5	1587
15	914
25	307
35	57
45	15

**40D  
42° NO LENS**

Throw Distance (ft)	Beam Diameter (ft)
6	4.6
8	6.1
10	7.6
12	9.2
14	10.7

32  
18  
12  
8  
6  
Illuminance at Center (fc)

WATTS: 7	LPW: 87
LUMENS: 609	CCT: 3000K
INTENSITY	
DEGREE	CANDELA
0	1169
5	1141
15	870
25	370
35	87
45	23

**55D  
55° NO LENS**

Throw Distance (ft)	Beam Diameter (ft)
6	6.3
8	8.4
10	10.4
12	12.5
14	14.6

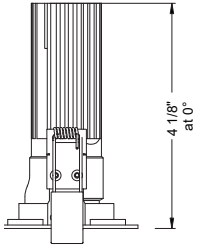
20  
11  
7  
5  
4  
Illuminance at Center (fc)

WATTS: 7	LPW: 95.1
LUMENS: 665	CCT: 3000K
INTENSITY	
DEGREE	CANDELA
0	731
5	720
15	626
25	423
35	214
45	81

PROJECT INFORMATION		
JOB NAME		TYPE
ORDERING CODE		

## MOUNTING OPTIONS

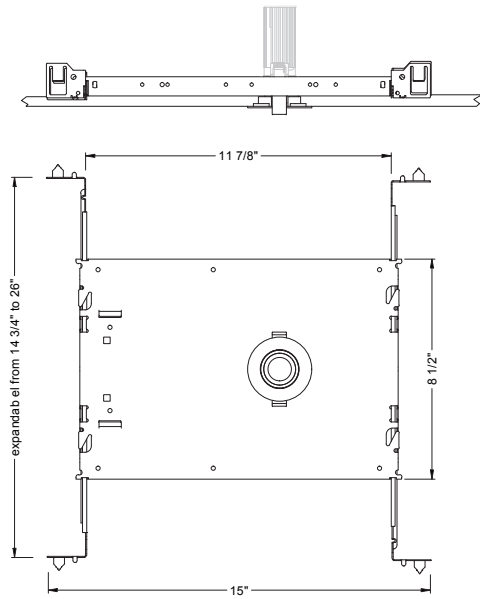
### FIXTURE HEIGHT 07LM LOW LUMENS



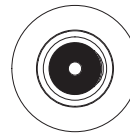
TRIMMED, TRIMLESS &  
MILLWORK

### NC - NEW CONSTRUCTION

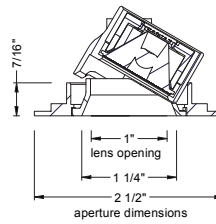
#### TRIM



#### TRIM

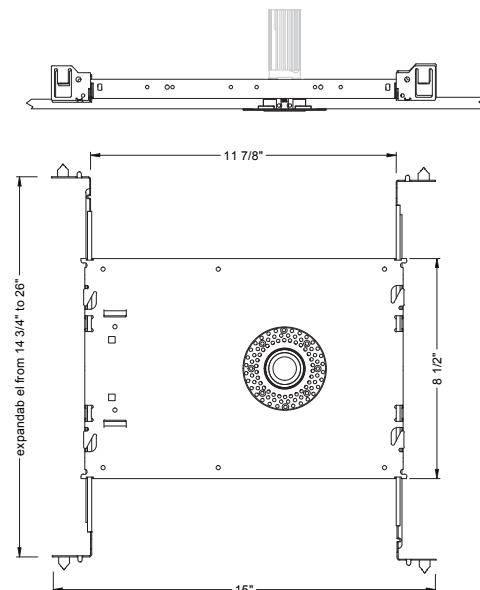


ceiling cutout  
2-1/8" diameter  
ceiling thickness  
1/8" to 1"

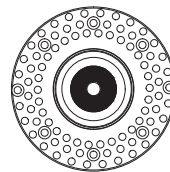


ADDITIONAL MOUNTING INFO	
New Construction Bar Hangers (included)	Mounting Length: 14-3/4" to 26"
Extension Kit p/n: K20266 (ordered separately, 1 per fixture)	Extends a pair of Bar Hangers Total Mounting Length: 29" to 48"

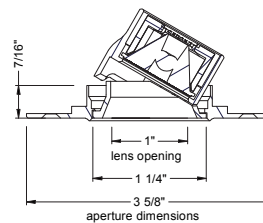
#### TRIMLESS



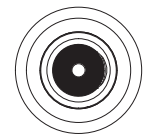
#### TRIMLESS



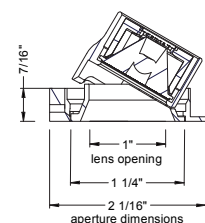
ceiling cutout  
2-1/8" diameter  
ceiling thickness  
1/8" to 1"



#### TRIMLESS/MILLWORK



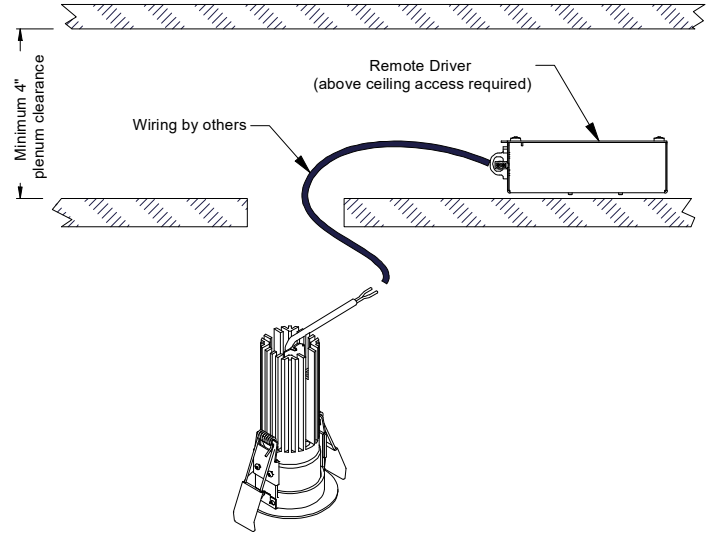
ceiling cutout  
2-1/8" diameter  
ceiling thickness  
1/8" to 1"



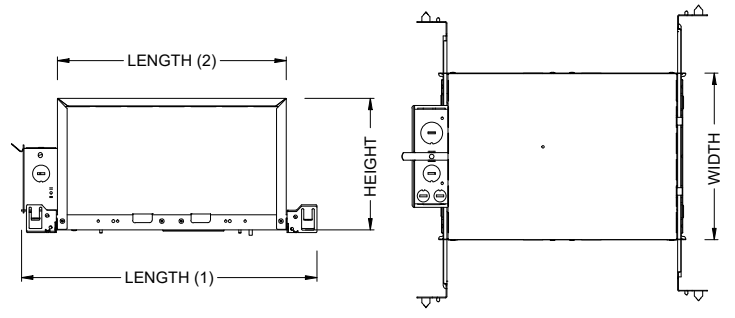
PROJECT INFORMATION		
JOB NAME		TYPE
ORDERING CODE		

## MOUNTING OPTIONS

### RET - RETRO TRIM/TRIMLESS



### IC - INSULATION CONTACT HOUSING ICAT - INSULATION CONTACT / AIR TIGHT CP - CHICAGO PLENUM



RATINGS / CERTIFICATIONS	NC	RET	IC	ICAT	CP
TYPE NON-IC	✓	✓			
TYPE IC			✓	✓	✓
CHICAGO PLENUM (CCEA)					✓
SUITABLE FOR AIR HANDLING PLENUMS				✓	✓
REDUCED AIRFLOW ASTM E283				✓	✓

BOX SIZE	L 1	L 2	W	H
A	15 - 7/16"	11 - 3/4"	8 - 1/2"	6 - 3/4"

BOX TYPE / LUMEN OUTPUT - STANDARD BEAMS			
LUMEN OUTPUT	BOX - A		
	CP	IC	ICAT
07LM	✓	✓	✓

CEILING THICKNESS		
FIXTURE TYPE	MOUNTING TYPE	
	NC, IC, ICAT, CP, RET	NC, IC, ICAT, CP, RET
	STANDARD CEILING THICKNESS	CEILING CUTOUT
TRIM	1/8" to 1.0"	2-1/8" diameter
TRIMLESS	1/8" to 1.0"	2-1/8" diameter
MILLWORK (TRIMLESS)	1/8" to 1.0"	2-1/8" diameter