

alphabet

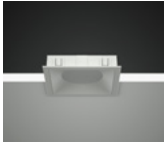
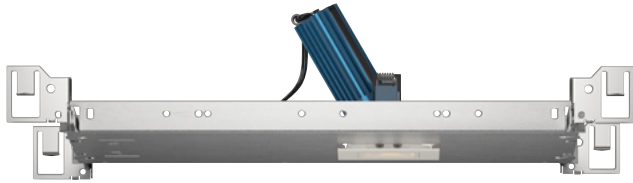
PROJECT INFORMATION		
JOB NAME		TYPE
ORDERING CODE		

NU1

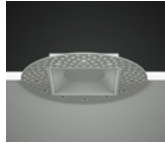
1" Square Wall Wash Tunable White



WW BEAM			
(Note: Specifications are subject to change without notice)			
6mm COB PERFORMANCE DATA			
LED LIGHT ENGINE	NOMINAL DELIVERED LUMENS	DRIVE CURRENT	LED WATTAGE
07LM	465LM @30K/95CRI	175mA	7W
Notes	Delivered lumens based on WW optic		



Trim



Trimless



Trimless Millwork

FEATURES

- Light uniformity from ceiling line to floor with no scalloping
- 3' set back with 3' on center spacing - 18 FC average (10' AFF)
- Placement of light intensity at any desired wall location
- Wide range of spacing flexible provides ability to navigate ceiling obstructions

DIMMING AND CONTROLS

- eldoLED flicker free 0-10V dimming to 0%
- eldoLED flicker free DALI dimming to 0%
- Casambi bluetooth dimming to 0%
- NLight control interface dimming to 0%
- All driver offerings are remote with above ceiling access, see page 3 for details.
- Refer to DX remote panels for additional options.

CONSTRUCTION

- High-grade die-cast and cold forged aluminum alloy assembly that has superior thermal and corrosion resistance properties.
- Shatter proof acrylic bezel lens
- Electrocoated 16-gauge cold-rolled steel construction
- Accommodates ceiling thickness from 1/8" to 1-1/2", On-field thick ceiling adjustment, see page 7
- Fixture is pre-set and shipped at 30deg tilt

LED

- Luminus tunable white COB from 2700K - 6500K; 95 CRI, R9 > 70; SDCM = 4-step MacAdam Ellipse; Lumen Maintenance: L₇₀ > 54,000 hrs

LISTING

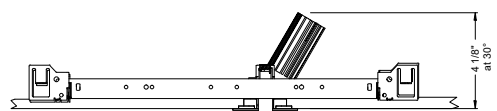
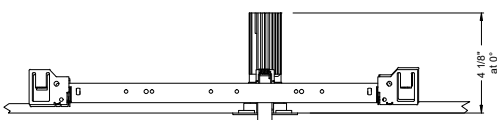
- ULus Listed to UL1598 & UL2108; cUL Listed to CSA C22.2 #250.0
- IP44 with lens - Suitable for wet locations with lens - Suitable for damp locations without lens
- NSF/ANSI-2 with lens (Non-Food and Splash Zones)
- 5 Year Limited warranty

ELECTRICAL

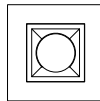
- Low voltage luminaire: 36Vdc nominal
- 07LM - 175mA

FIXTURE HEIGHT

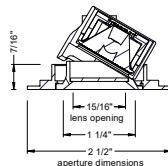
LED LIGHT ENGINE: 07LM



TRIMMED

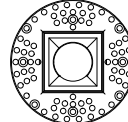


ceiling cutout
2-1/8" square
ceiling thickness
1/8" to 1-1/2"

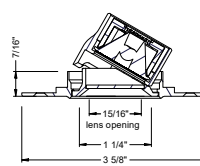


aperture dimensions

TRIMLESS



ceiling cutout
2-1/8" square
ceiling thickness
1/8" to 1-1/2"

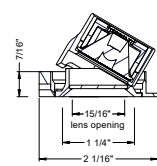


aperture dimensions

MILLWORK



ceiling cutout
2-1/8" square
ceiling thickness
1/8" to 1-1/2"



aperture dimensions

alphabet

PROJECT INFORMATION		
JOB NAME		TYPE
ORDERING CODE		

		ORDERING CODE																									
SERIES	NU1	NU1																									
TYPE	QW	square wall wash																									
	QWT	square wall wash trimless																									
	QWTMW	square wall wash trimless millwork																									
LED	TW	tunable white (Luminus)																									
DELIVERED LUMENS	07LM	465 lm																									
	Standard Configuration: 3000K 80CRI Calculated Delivered Lumens = [Delivered Lumen Value] x [CCT Multiplier]																										
CCT	2765	2700K to 6500K tunable white	<table border="1"> <thead> <tr> <th>CCT</th> <th>2700K</th> <th>3000K</th> <th>3500K</th> <th>4000K</th> <th>5000K</th> <th>5700K</th> <th>6500K</th> </tr> </thead> <tbody> <tr> <td>CCT MULTIPLIER FOR LUMEN OUTPUT</td> <td>0.91</td> <td>0.98</td> <td>1.00</td> <td>0.99</td> <td>1.00</td> <td>1.01</td> <td>1.02</td> </tr> <tr> <td>EML RATIO</td> <td>0.49</td> <td>0.57</td> <td>0.68</td> <td>0.79</td> <td>0.96</td> <td>1.04</td> <td>1.12</td> </tr> </tbody> </table>	CCT	2700K	3000K	3500K	4000K	5000K	5700K	6500K	CCT MULTIPLIER FOR LUMEN OUTPUT	0.91	0.98	1.00	0.99	1.00	1.01	1.02	EML RATIO	0.49	0.57	0.68	0.79	0.96	1.04	1.12
		CCT	2700K	3000K	3500K	4000K	5000K	5700K	6500K																		
CCT MULTIPLIER FOR LUMEN OUTPUT	0.91	0.98	1.00	0.99	1.00	1.01	1.02																				
EML RATIO	0.49	0.57	0.68	0.79	0.96	1.04	1.12																				
CRI	95	95 typical, 90 minimum																									
OPTIC & LM MULTIPLIER SEE PAGE 5	WW	wall wash with diffused angle bending lens																									
TRIM COLOR	BK	black																									
	WH	white																									
	MC	matte chrome																									
	BZ	bronze																									
	WT	wheat																									
	CC¹	custom color, consult factory for details																									
Antimicrobial finish, add AM to black, white or matte chrome i.e. BKAM. Not applicable to trimless option. Do not include in trimless ordering code.																											
BEZEL COLOR	BK	black	(0.98)																								
	WH	white	(1.00)																								
	MC	matte chrome	(0.99)																								
	BZ	bronze	(0.98)																								
	WT	wheat	(0.99)																								
	CC¹	custom color, consult factory for details																									
Antimicrobial finish, add AM to black, white or matte chrome i.e. BKAM.																											

		ORDERING CODE	
MOUNTING OPTIONS SEE PAGE 6, 7	NC	new construction with ceiling fitting plate	
	IC	insulation contact housing	
	ICAT	insulation contact/airtight housing	
	CP	chicago plenum housing	
	RET	retrofit, no ceiling fitting plate	
		remote driver housing only	
VOLTAGE	LVL	low voltage luminaire	
DIMMING	ND	No Driver Included. Customer to Supply PoE system components or order remote driver separately. Refer to POE/Remote Driver reference sheet for additional details.	

ADDITIONAL MOUNTING INFO	
New Construction Bar Hangers (included)	Mounting Length: 14-3/4" to 26"
Extension Kit p/n: K20266 (ordered separately, 1 per fixture)	Extends a pair of Bar Hangers Total Mounting Length: 29" to 48"

YOUR COMPLETED ORDERING CODE
Follow the steps to specify your fixture, example:
NU1 - QW - TW - 07LM - 2765 - 95 - WW - WH - WH - NC - LVL - ND

NOTES

1. Custom set up fee plus minimum quantity required per color.

TRIM OPTIONS

TRIM/BEZEL COLORS



WH



MC



BK



BZ



WT

alphabet

PROJECT INFORMATION		
JOB NAME		TYPE
ORDERING CODE		

REMOTE DRIVER - ORDERING CODE		
SERIES	DX-C	compact driver box
NUMBER OF DRIVERS	1	number of drivers, 1
CURRENT	175	175mA
VOLTAGE	UNV	120V-277V
DIMMING	DIM10Z	eldoLED flicker free 0-10V dimming to 0%
	DALIZ	eldoLED flicker free DALI 2 dimming to 0%
	CASZ	Casambi Bluetooth dim to zero
	NLT	nLight control interface: standard Cat-5/RJ45 connection (female), dim to off

WW BEAM		
(Note: Specifications are subject to change without notice)		
6mm COB PERFORMANCE DATA		
LED LIGHT ENGINE	NOMINAL DELIVERED LUMENS	SYSTEM WATTAGE
07LM	465LM @30K/95CRI	11W
Notes	Delivered lumens based on WW optic	

YOUR COMPLETED ORDERING CODE	
Follow the steps to specify your fixture, example:	
DX-C - 1 - 175 - UNV - DIM10Z	

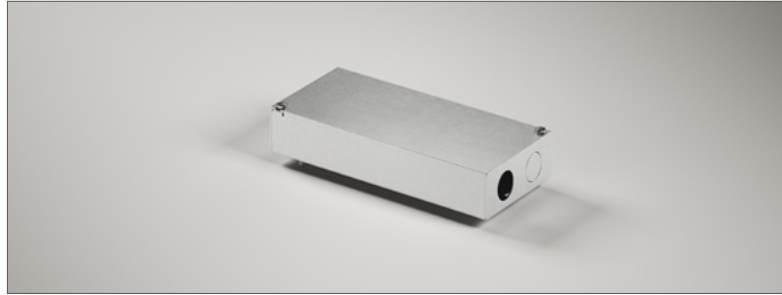
NOTES

- EldoLED uses logarithmic dimming curve as standard. For linear dimming curve, add "LIN" after dimming code, i.e. DIM10LIN.

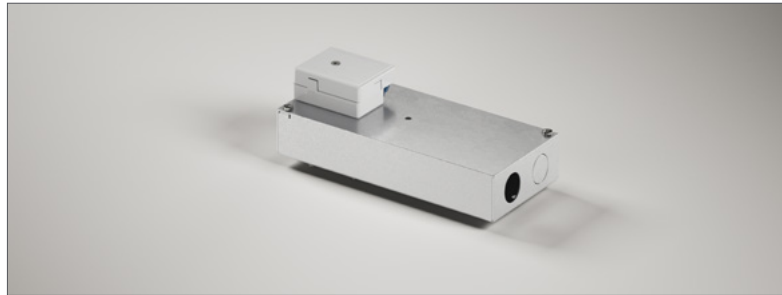
ELECTRICAL/CONTROLS

- 120V-277V
- Power factor ≥ 0.9
- 2kV driver input surge protection
- Max. ambient installation temperature 95°F (35°C)
- Minimum wire gauge approved mounting distance 18 AWG, 330 feet
- Maximum Remote mounting distance of EM driver shall be 50 feet

REMOTE SINGLE DRIVER BOX (DIM10Z & DALIZ)



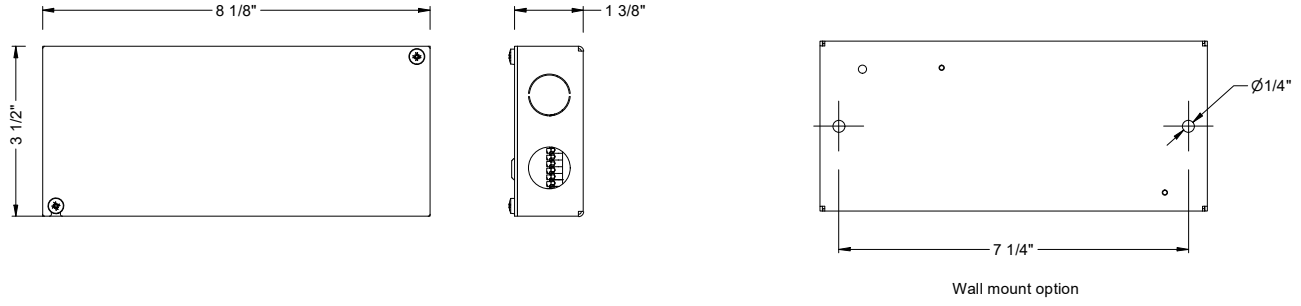
REMOTE SINGLE DRIVER BOX (NLT & CASZ)



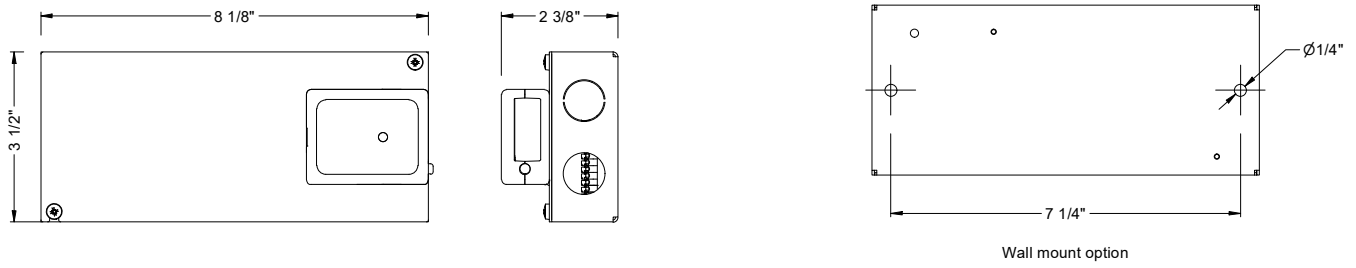
PROJECT INFORMATION		
JOB NAME		TYPE
ORDERING CODE		

DRIVER BOXES

REMOTE SINGLE DRIVER BOX (DIM10Z & DALIZ)



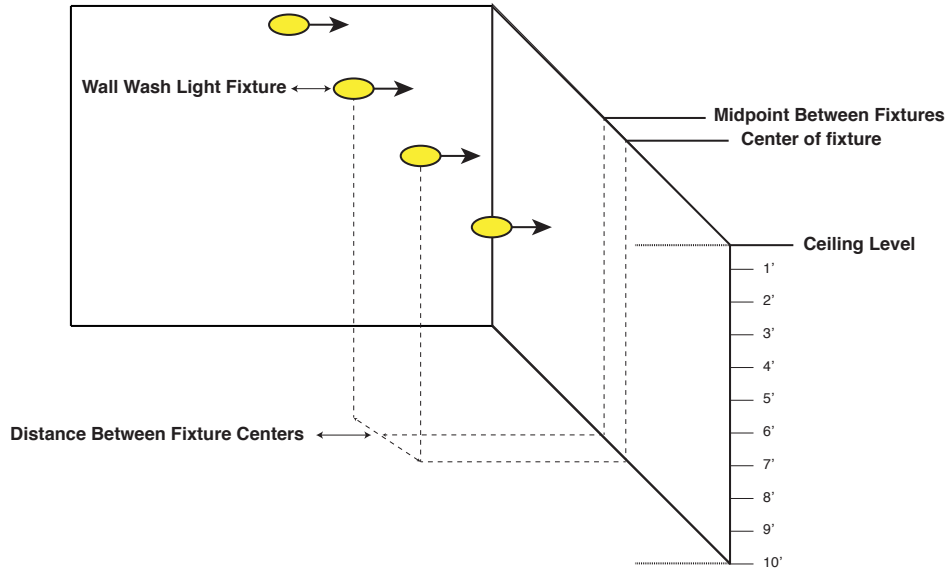
REMOTE SINGLE DRIVER BOX (NLT & CASZ)



alphabet

PROJECT INFORMATION		
JOB NAME		TYPE
ORDERING CODE		

PHOTOMETRIC DATA DIAGRAM



PHOTOMETRIC DATA CHARTS

FOOT CANDLE MEASUREMENT TUNABLE WHITE 07LM 95CRI 3000K

MOUNTING DISTANCE	2' FROM WALL						3' FROM WALL						4' FROM WALL					
	2' ON CENTER		3' ON CENTER		4' ON CENTER		2' ON CENTER		3' ON CENTER		4' ON CENTER		3' ON CENTER		4' ON CENTER		6' ON CENTER	
FIXTURE SPACING																		
DISTANCE FROM CEILING	CENTER	MID POINT	CENTER	MID POINT	CENTER	MID POINT	CENTER	MID POINT	CENTER	MID POINT	CENTER	MID POINT	CENTER	MID POINT	CENTER	MID POINT	CENTER	MID POINT
1'	12.8	12.4	9.7	7.1	9.1	3.8	2.8	2.8	2	1.8	1.7	1.1	0.4	0.4	0.3	0.3	0.3	0.1
2'	25.7	25.7	18.4	16.7	15.8	10.8	12.1	12.4	8.7	8.6	6.9	6.1	4.1	4.2	3.2	3.1	2.4	1.8
3'	22.3	22.7	16	15.5	13	11.1	15.5	16	11.4	11.4	8.9	8.5	7	7.1	5.5	5.5	4.1	3.3
4'	15.9	16.3	11.7	11.7	9.3	8.8	14.2	14.7	10.8	10.9	8.5	8.3	8	8.2	6.4	6.4	4.6	4.2
5'	10.9	11.2	8.3	8.4	6.5	6.5	11.5	11.8	9	9.1	7.1	7.1	7.7	7.9	6.3	6.3	4.5	4.2
6'	7.5	7.7	5.9	6	4.7	4.8	8.8	9.1	7.1	7.2	5.7	5.8	6.8	7	5.6	5.7	4	3.9
7'	5.3	5.4	4.3	4.4	3.5	3.5	6.7	6.8	5.5	5.6	4.5	4.6	5.7	5.9	4.8	4.9	3.5	3.4
8'	3.8	3.9	3.1	3.2	2.6	2.7	5	5.2	4.3	4.4	3.6	3.6	4.7	4.8	4	4.1	2.9	2.9
9'	2.8	2.8	2.4	2.4	2	2.1	3.9	3.9	3.3	3.4	2.8	2.9	3.8	3.9	3.3	3.4	2.5	2.5
10'	2.1	2.1	1.8	1.9	1.6	1.6	3	3	2.6	2.7	2.3	2.3	3.1	3.2	2.7	2.8	2.1	2.1

NOTE

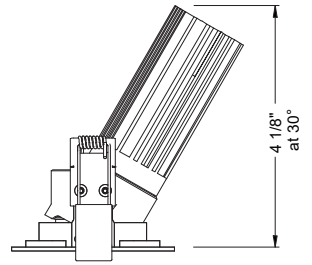
1. Performance based on typical reflectance values and room dimensions. IES files available at ledbrands.com

PROJECT INFORMATION		
JOB NAME		TYPE
ORDERING CODE		

MOUNTING OPTIONS

FIXTURE HEIGHT

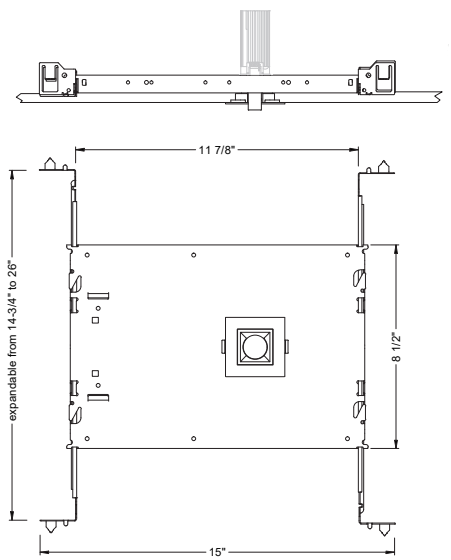
07LM



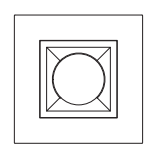
TRIMMED, TRIMLESS & MILLWORK

NC - NEW CONSTRUCTION

TRIM

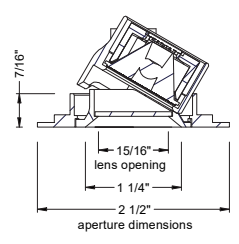


TRIM

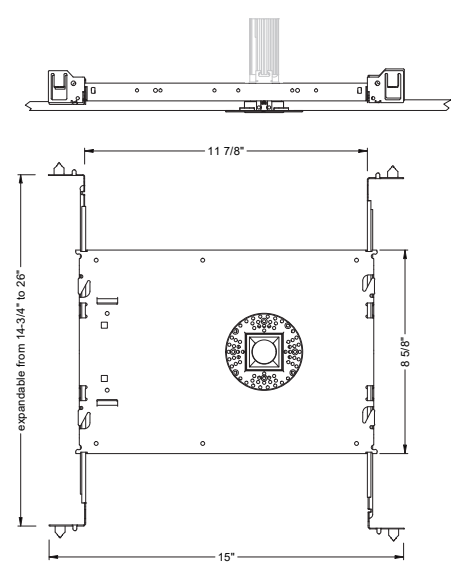


ceiling cutout
2-1/8" square

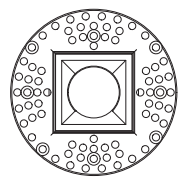
ceiling thickness
1/8" to 1-1/2"



TRIMLESS

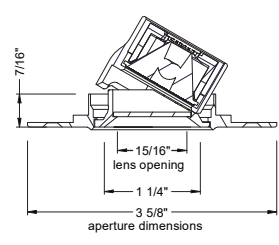


TRIMLESS

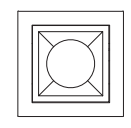


ceiling cutout
2-1/8" square

ceiling thickness
1/8" to 1-1/2"

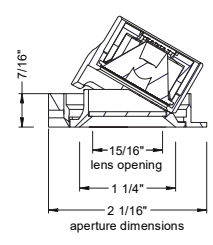


TRIMLESS/MILLWORK



ceiling cutout
2-1/8" square

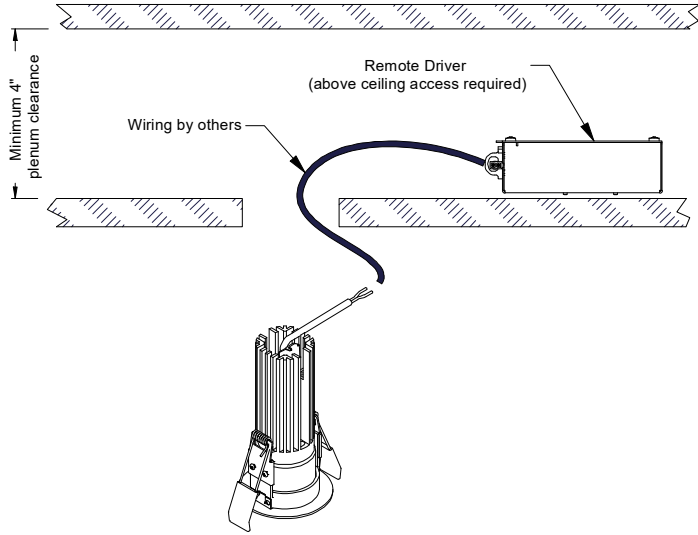
ceiling thickness
1/8" to 1-1/2"



PROJECT INFORMATION		
JOB NAME		TYPE
ORDERING CODE		

MOUNTING OPTIONS

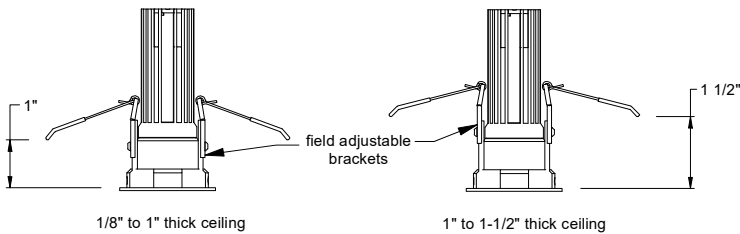
RET - RETRO TRIM/TRIMLESS



RATINGS / CERTIFICATIONS	NC	RET	IC	ICAT	CP
TYPE NON-IC	✓	✓			
TYPE IC			✓	✓	✓
CHICAGO PLENUM (CCEA)					✓
SUITABLE FOR AIR HANDLING PLENUMS				✓	✓
REDUCED AIRFLOW ASTM E283				✓	✓

CEILING THICKNESS

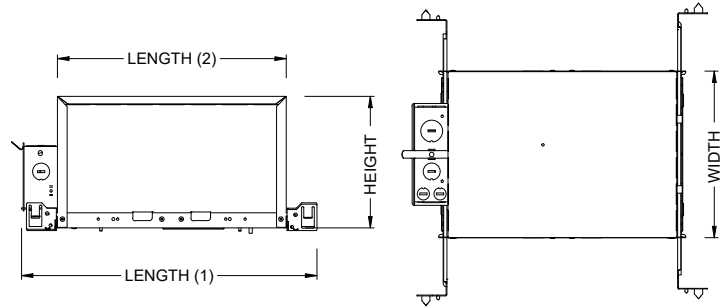
FIXTURE TYPE	MOUNTING TYPE		
	NC, IC, ICAT, CP, RET	NC, IC, ICAT, CP, RET	NC, IC, ICAT, CP, RET
	STANDARD CEILING THICKNESS	THICK CEILING THICKNESS	CEILING CUTOUT
TRIM	1/8" to 1.0"	1.0" to 1 1/2"	2-1/8" square
TRIMLESS	1/8" to 1.0"	1.0" to 1 1/2"	2-1/8" square
MILLWORK (TRIMLESS)	1/8" to 1.0"	1.0" to 1 1/2"	2-1/8" square



FIXTURE TILT INFO

TILT	CEILING THICKNESS
0° TO 30°	1/8" to 1.0"
0° TO 20°	1.0" to 1 1/2"

IC - INSULATION CONTACT HOUSING ICAT - INSULATION CONTACT / AIR TIGHT CP - CHICAGO PLENUM



BOX SIZE	L1	L2	W	H
A	15 - 7/16"	11 - 3/4"	8 - 1/2"	6 - 3/4"

BOX TYPE / LUMEN OUTPUT - STANDARD BEAMS

LUMEN OUTPUT	BOX - A		
	CP	IC	ICAT
07LM	✓	✓	✓