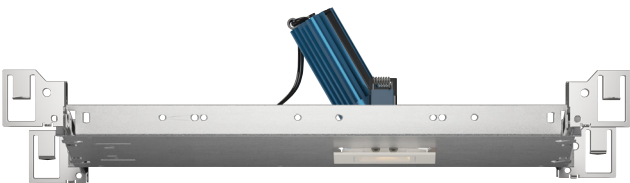


1" Square Wall Wash Hospitality CCTs

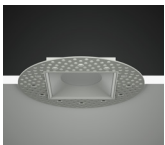


PROJECT INFORMATION			
JOB NAME		TYPE	
ORDERING CODE			

WW BEAM		
(Note: Specifications are subject to change without notice)		
6mm COB PERFORMANCE DATA		
LED LIGHT ENGINE	NOMINAL DELIVERED LUMENS	SYSTEM WATTAGE
05LM	320LM @24K/90CRI	5.5W
07LM	580LM @24K/90CRI	11W
Notes	Delivered lumens based on WW optic, (see page 2)	



Trim



Trimless



Trimless Millwork

FEATURES

- Light uniformity from ceiling line to floor with no scalloping
- 3' set back with 3' on center spacing – 17 FC at 3' from ceiling
- Placement of light intensity at any desired wall location
- Wide range of spacing flexible provides ability to navigate ceiling obstructions

DIMMING AND CONTROLS

- eldoLED flicker free 0-10V dimming to 0% and 1%
- eldoLED flicker free DALI dimming to 0% and 1%
- Lutron Hi-lume Eco System dimming to 0.1% and 1%
- Leading & trailing edge (Triac/ELV) dimming to 1%
- All driver offerings are remote with above ceiling access, see page 3 for details.
- Refer to DX remote panels for additional options.

CONSTRUCTION

- High-grade die-cast and cold forged aluminum alloy assembly that has superior thermal and corrosion resistance properties.
- Shatter proof acrylic bezel lens
- Electrocoated 16-gauge cold-rolled steel construction
- Accommodates ceiling thickness from 1/8" to 1-1/2", On-field thick ceiling adjustment, see page 7
- Fixture is pre-set and shipped at 30deg tilt

LED

- 90 CRI: SDCM = 2-step MacAdam Ellipse, Lumen Maintenance: L₇₀ > 66,000 hrs

LISTING

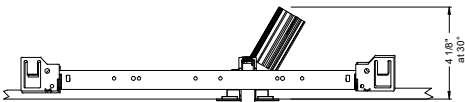
- ULus Listed to UL1598 & UL2108; cUL Listed to CSA C22.2 #250.0
- IP44 with lens - Suitable for wet locations with lens - Suitable for damp locations without lens
- NSF/ANSI-2 with lens (Non-Food and Splash Zones)
- **Declare.** - LBC Red List Approved
- 5 Year Limited warranty

ELECTRICAL

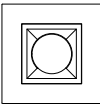
- Low voltage luminaire: 36Vdc nominal
- 05LM - 150mA
- 07LM - 300mA

FIXTURE HEIGHT

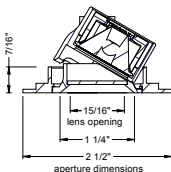
LED LIGHT ENGINE: 05LM - 07LM



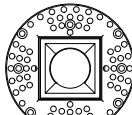
TRIMMED



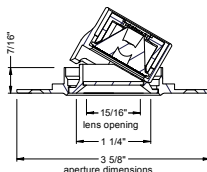
ceiling cutout
2-1/8" square
ceiling thickness
1/8" to 1-1/2"



TRIMLESS



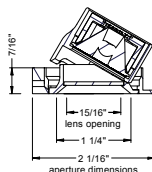
ceiling cutout
2-1/8" square
ceiling thickness
1/8" to 1-1/2"



MILLWORK



ceiling cutout
2-1/8" square
ceiling thickness
1/8" to 1-1/2"



alphabet

PROJECT INFORMATION			
JOB NAME		TYPE	
ORDERING CODE			

ORDERING CODE					
SERIES	NU1	NU1			
TYPE	QW	square wall wash			
	QWT	square wall wash trimless			
	QWTMW	square wall wash trimless millwork			
LED	SW	standard white			
DELIVERED LUMENS	05LM	320 lm			
	07LM	580 lm			
	Standard Configuration: 2400K 90CRI Calculated Delivered Lumens = [Delivered Lumen Value] x [CCT Multiplier]				
CCT	22K	2200K	CCT	2200K	2400K
	24K	2400K	CRI	90+	90+
			CCT MULTIPLIER FOR LUMEN OUTPUT	0.92	1
CRI	90	90 CRI			
OPTIC & LM MULTIPLIER SEE PAGE 5	WW	wall wash with diffused angle bending lens			
TRIM COLOR SEE PAGE 3	BK	black			
	WH	white			
	MC	matte chrome			
	BZ	bronze			
	WT	wheat			
	CC¹	custom color, consult factory for details			
	Antimicrobial finish, add AM to black, white or matte chrome i.e. BKAM.				
	Not applicable to trimless option. Do not include in trimless ordering code.				
BEZEL COLOR SEE PAGE 3	BK	black	(0.98)		
	WH	white	(1.00)		
	MC	matte chrome	(0.99)		
	BZ	bronze	(0.98)		
	WT	wheat	(0.99)		
	CC¹	custom color, consult factory for details			
	Antimicrobial finish, add AM to black, white or matte chrome i.e. BKAM.				

ORDERING CODE		
MOUNTING OPTIONS SEE PAGE 6, 7	NC	new construction with ceiling fitting plate
	NCINH²	new construction with ceiling fitting plate, IC rated, inherently protected
	IC²	insulation contact housing
	ICAT²	insulation contact/airtight housing
	CP²	chicago plenum housing
	RET	retrofit, no ceiling fitting plate
	RETINH²	retrofit, no ceiling fitting plate, IC rated, inherently protected
remote driver only		
VOLTAGE	LVL	low voltage luminaire
DIMMING	ND	No driver included. See page 3 for remote driver options.

ADDITIONAL MOUNTING INFO	
New Construction Bar Hangers (included)	Mounting Length: 14-3/4" to 26"
Extension Kit p/n: K20266 (ordered separately, 1 per fixture)	Extends a pair of Bar Hangers Total Mounting Length: 29" to 48"

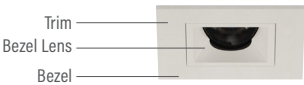
YOUR COMPLETED ORDERING CODE
Follow the steps to specify your fixture, example:
NU1 - QW - SW - 05LM - 22K - 90 - WW - WH - WH - NC - LVL - ND

NOTES

- Custom set up fee plus minimum quantity required per color.
- IC/ICAT/CP/NCINH/RETINH available in 05LM.

TRIM OPTIONS

TRIM/BEZEL COLORS



WH

MC

BK

BZ

WT

PROJECT INFORMATION			
JOB NAME		TYPE	
ORDERING CODE			

REMOTE DRIVER - ORDERING CODE		
SERIES	DX-C	compact driver box
NUMBER OF DRIVERS	1-5	number of drivers, 1-5
CURRENT	150	150mA
	300	300mA
VOLTAGE	120	120V
	UNV	120V-277V
DIMMING	DIM10	eldoLED flicker free 0-10V dimming to 1%
	DIM10Z	eldoLED flicker free 0-10V dimming to 0%
	DALI	eldoLED flicker free DALI-2 dimming to 1%
	DALIZ	eldoLED flicker free DALI-2 dimming to 0%
	DMX-RJ45¹	DMX control dimming to 0.1% with RJ45 connection
	DMX-WL¹	DMX control dimming to 0.1% with wire lead connection
	DMX-XLR¹	DMX control dimming to 0.1% with XLR 5pin connection
	LUT	Lutron Hi-lume Ecosystem dimming to 1%, Soft-on & Fade-to-Black
	LUTP	Lutron Hi-lume Premier Ecosystem dimming to 0.1%, Soft-on & Fade-to-Black
	ELV²	leading & trailing edge (Triac/ELV) dimming to 1%
ELECTRICAL OPTIONS	NLT	nLight control interface: standard Cat-5/RJ45 connection (female), dim to off
	CAS³	Casambi control with flicker free 1% dimming
	AWN⁴	lutron athena wireless node
	EM7⁵	remote emergency battery backup, 90 minutes at 7 watts to LED, Remote TS

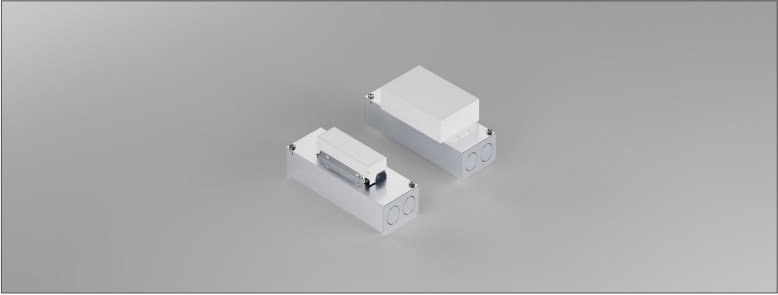
YOUR COMPLETED ORDERING CODE	
Follow the steps to specify your fixture, example:	
DX-C - 1 - 300 - UNV - DIM10 - EM7	

- NOTES**
- 1. DMX available only in DX-C-1.
 - 2. ELV available in 120V.
 - 3. All drivers on single Casambi dimming circuit.
 - 4. AWNR reference page 10 for product specification on Athena wireless node.
 - 5. EM available only with DX-C-1. Box size same as DX-C-2, with one driver and one battery.
- * EldoLED uses logarithmic dimming curve as standard. For linear dimming curve, add "LIN" after dimming code, i.e. DIM10LIN.

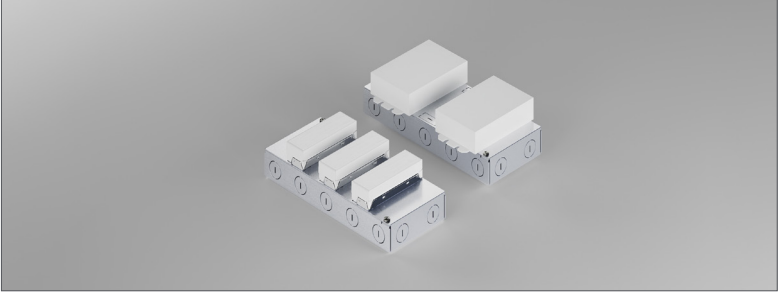
WW BEAM			
(Note: Specifications are subject to change without notice)			
6mm COB PERFORMANCE DATA			
LED LIGHT ENGINE	NOMINAL DELIVERED LUMENS	DRIVE CURRENT	LED WATTAGE
05LM	320LM @24K/90CRI	150mA	7W
07LM	580LM @24K/90CRI	300mA	14W
Notes	Delivered lumens based on 35D optic with no lens, (see page 2)		

- ELECTRICAL/CONTROLS**
- 120V-277V, 120 only Triac / ELV
 - Power factor ≥ 0.9
 - 2kV driver input surge protection
 - Remote emergency test switch
 - 7W, 10W (T20 CEC) and 12W EM 90min battery
 - Max. ambient installation temperature 95°F (35°C)
 - Minimum wire gauge approved mounting distance 18 AWG, 330 feet
 - Maximum Remote mounting distance of EM driver shall be 50 feet

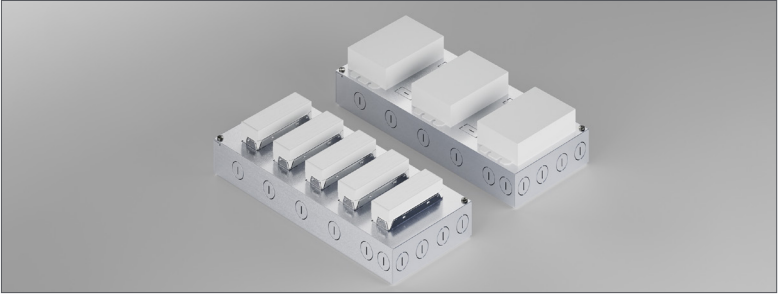
REMOTE SINGLE DRIVER BOX



REMOTE 2 TO 3 DRIVER BOX (2 Drivers for DIM10Z/DALI/DALIZ/LUT/LUTP)
(1 Driver + EM)



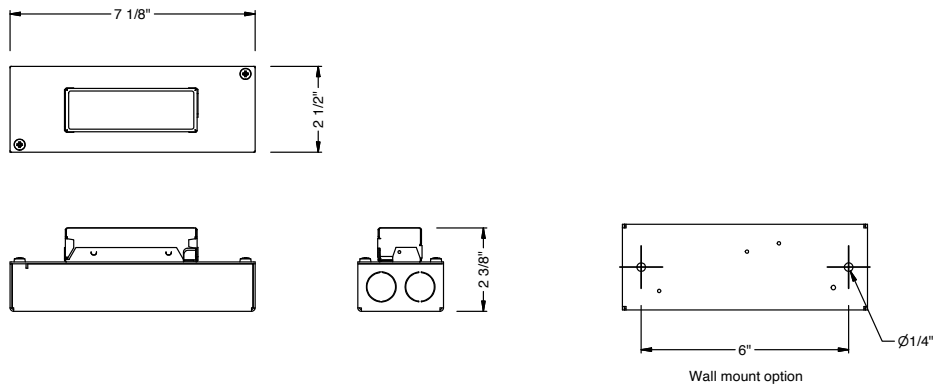
REMOTE 4 TO 5 DRIVER BOX (3 Drivers for DIM10Z/DALI/DALIZ/LUT/LUTP)



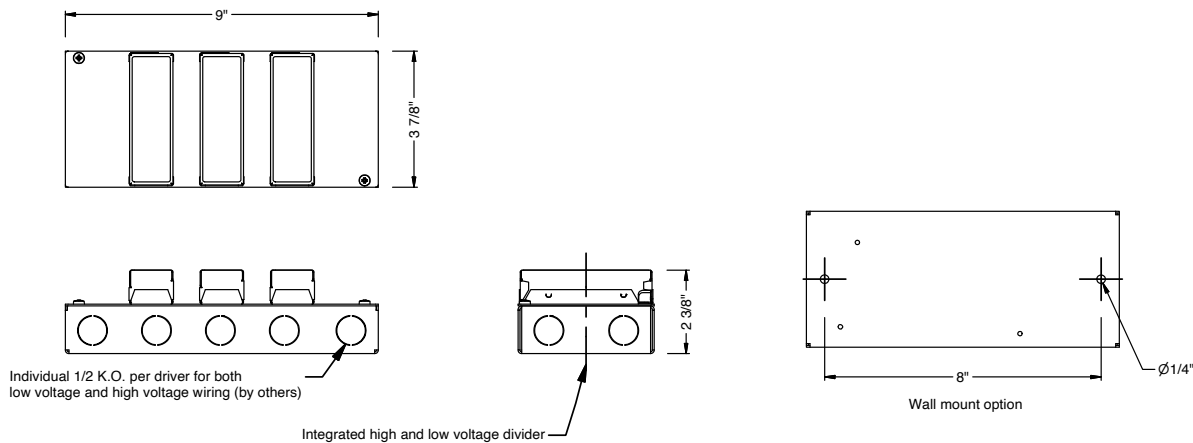
PROJECT INFORMATION		
JOB NAME		TYPE
ORDERING CODE		

DRIVER BOXES

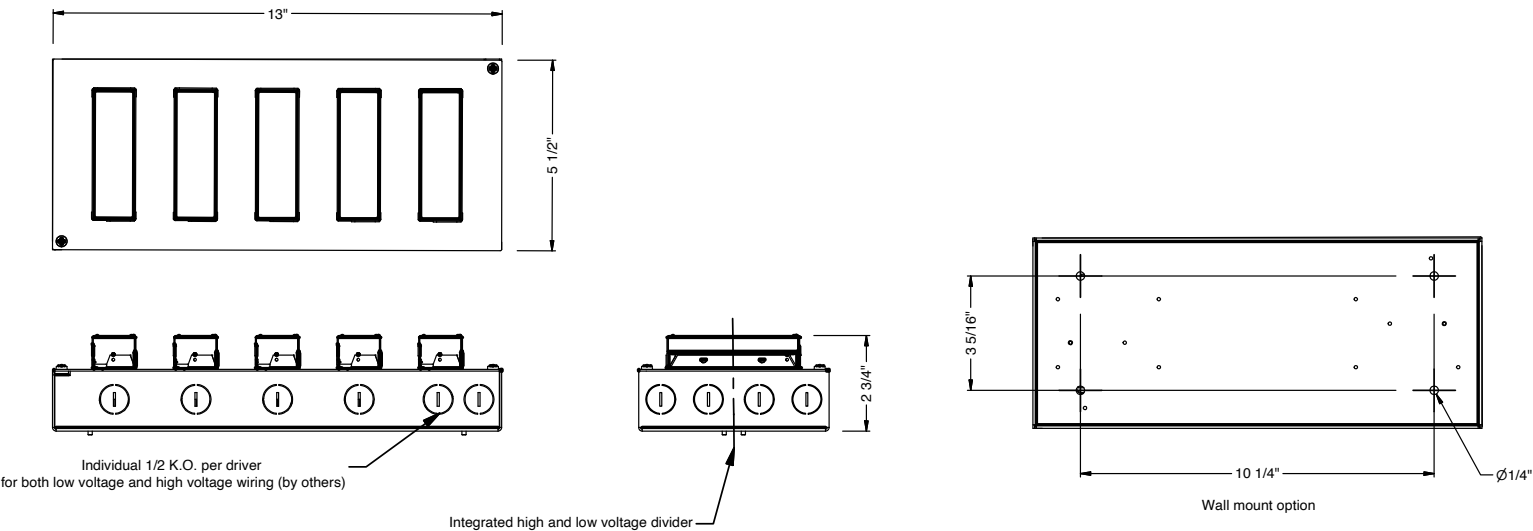
REMOTE SINGLE DRIVER BOX



REMOTE 2 TO 3 DRIVER BOX (2 Drivers for DIM10Z/DALI/DALIZ/LUT/LUTP)

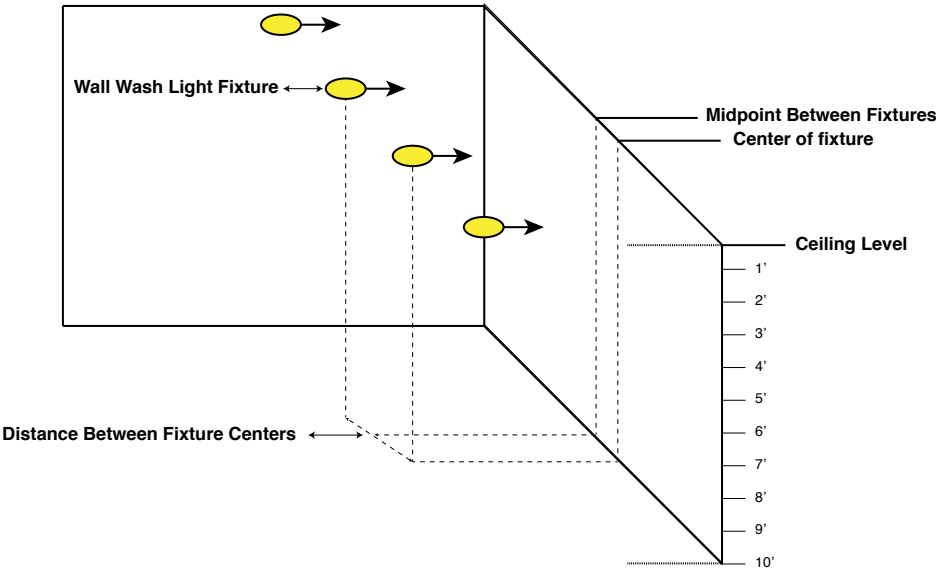


REMOTE 4 TO 5 DRIVER BOX (3 Drivers for DIM10Z/DALI/DALIZ/LUT/LUTP)



PROJECT INFORMATION			
JOB NAME		TYPE	
ORDERING CODE			

PHOTOMETRIC DATA DIAGRAM



PHOTOMETRIC DATA CHARTS

FOOT CANDLE MEASUREMENT

STANDARD WHITE WALL WASH 07LM 90CRI 2400K																		
MOUNTING DISTANCE	2' FROM WALL						3' FROM WALL						4' FROM WALL					
FIXTURE SPACING	2' ON CENTER		3' ON CENTER		4' ON CENTER		2' ON CENTER		3' ON CENTER		4' ON CENTER		3' ON CENTER		4' ON CENTER		6' ON CENTER	
DISTANCE FROM CEILING	CENTER	MID POINT	CENTER	MID POINT	CENTER	MID POINT	CENTER	MID POINT	CENTER	MID POINT	CENTER	MID POINT	CENTER	MID POINT	CENTER	MID POINT	CENTER	MID POINT
1'	21	20.3	16	11.6	14.8	6.3	5.5	5.6	3.9	3.7	3.3	2.3	0.9	0.9	0.8	0.6	0.7	0.2
2'	37.5	37.5	27	24.2	23.2	15.7	18.9	19.3	13.5	13.4	10.8	9.5	6.7	6.8	5.2	5.1	4	2.9
3'	30.6	31.1	22	21.3	17.9	15.2	22.7	23.3	16.7	16.7	13.1	12.4	10.7	10.9	8.4	8.4	6.2	5.1
4'	20.9	21.4	15.4	15.4	12.2	11.6	19.9	20.5	15	15.2	11.9	11.6	11.7	12	9.4	9.4	6.8	6.1
5'	13.9	14.2	10.6	10.7	8.4	8.3	15.5	16	12.1	12.3	9.6	9.6	10.9	11.2	8.8	8.9	6.3	5.9
6'	9.3	9.6	7.3	7.5	5.9	6	11.6	11.9	9.3	9.5	7.5	7.6	9.3	9.6	7.7	7.8	5.5	5.3
7'	6.4	6.6	5.2	5.4	4.3	4.4	8.6	8.8	7.1	7.2	5.8	5.9	7.6	7.9	6.4	6.5	4.6	4.6
8'	4.6	4.7	3.8	3.9	3.2	3.3	6.4	6.5	5.4	5.5	4.5	4.6	6.2	6.3	5.2	5.3	3.8	3.9
9'	3.3	3.4	2.9	2.9	2.4	2.5	4.8	4.9	4.1	4.2	3.5	3.6	4.9	5.1	4.3	4.4	3.2	3.2
10'	2.5	2.5	2.2	2.2	1.9	1.9	3.7	3.7	3.2	3.3	2.8	2.9	4	4.1	3.5	3.6	2.6	2.7

STANDARD WHITE WALL WASH 05LM 90CRI 2400K																		
MOUNTING DISTANCE	2' FROM WALL						3' FROM WALL						4' FROM WALL					
FIXTURE SPACING	2' ON CENTER		3' ON CENTER		4' ON CENTER		2' ON CENTER		3' ON CENTER		4' ON CENTER		3' ON CENTER		4' ON CENTER		6' ON CENTER	
DISTANCE FROM CEILING	CENTER	MID POINT	CENTER	MID POINT	CENTER	MID POINT	CENTER	MID POINT	CENTER	MID POINT	CENTER	MID POINT	CENTER	MID POINT	CENTER	MID POINT	CENTER	MID POINT
1'	11.6	11.2	8.8	6.4	8.2	3.5	3	3.1	2.1	2	1.8	1.3	0.5	0.5	0.4	0.3	0.4	0.1
2'	20.7	20.7	14.9	13.4	12.8	8.6	10.4	10.7	7.5	7.4	6	5.2	3.7	3.8	2.9	2.8	2.2	1.6
3'	16.9	17.2	12.2	11.7	9.9	8.4	12.5	12.9	9.2	9.2	7.2	6.9	5.9	6	4.7	4.6	3.4	2.8
4'	11.5	11.8	8.5	8.5	6.7	6.4	11	11.3	8.3	8.4	6.5	6.4	6.5	6.6	5.2	5.2	3.7	3.3
5'	7.7	7.8	5.8	5.9	4.6	4.6	8.5	8.8	6.7	6.8	5.3	5.3	6	6.2	4.9	4.9	3.5	3.3
6'	5.1	5.3	4.1	4.1	3.3	3.3	6.4	6.6	5.1	5.2	4.1	4.2	5.1	5.3	4.2	4.3	3	2.9
7'	3.6	3.6	2.9	3	2.4	2.4	4.7	4.8	3.9	4	3.2	3.3	4.2	4.3	3.5	3.6	2.6	2.5
8'	2.5	2.6	2.1	2.2	1.8	1.8	3.5	3.6	3	3	2.5	2.5	3.4	3.5	2.9	2.9	2.1	2.1
9'	1.8	1.9	1.6	1.6	1.3	1.4	2.6	2.7	2.3	2.3	1.9	2	2.7	2.8	2.3	2.4	1.8	1.8
10'	1.4	1.4	1.2	1.2	1	1.1	2	2.1	1.8	1.8	1.5	1.6	2.2	2.2	1.9	2	1.5	1.5

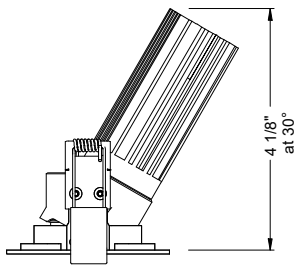
NOTE

1. Performance based on typical reflectance values and room dimensions. IES files available at [ledrabrands.com](https://www.ledrabrands.com)

PROJECT INFORMATION			
JOB NAME		TYPE	
ORDERING CODE			

MOUNTING OPTIONS

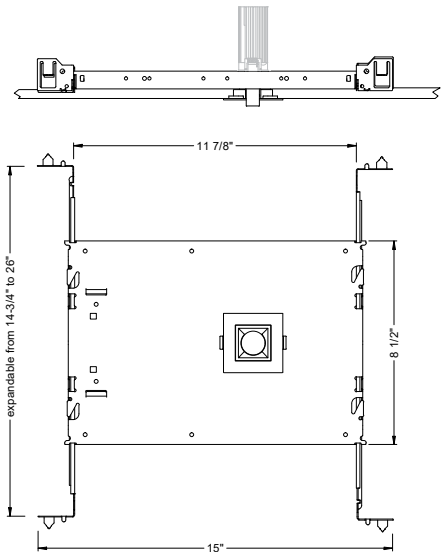
FIXTURE HEIGHT



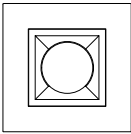
TRIMMED, TRIMLESS & MILLWORK

NC - NEW CONSTRUCTION

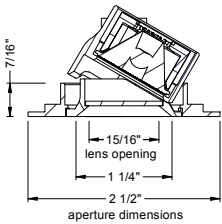
TRIM



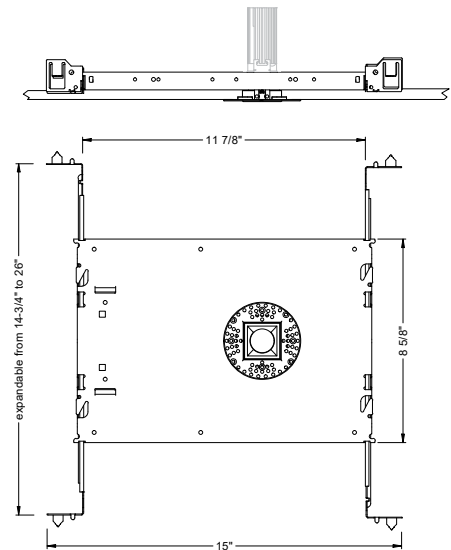
TRIM



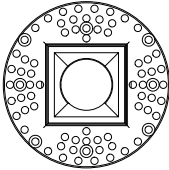
ceiling cutout
2-1/8" square
ceiling thickness
1/8" to 1-1/2"



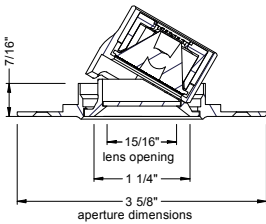
TRIMLESS



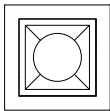
TRIMLESS



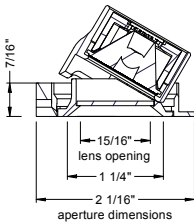
ceiling cutout
2-1/8" square
ceiling thickness
1/8" to 1-1/2"



TRIMLESS/MILLWORK



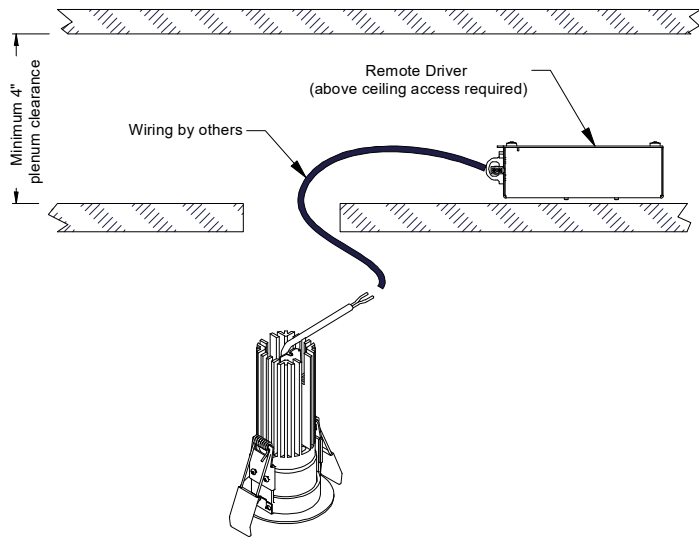
ceiling cutout
2-1/8" square
ceiling thickness
1/8" to 1-1/2"



PROJECT INFORMATION			
JOB NAME		TYPE	
ORDERING CODE			

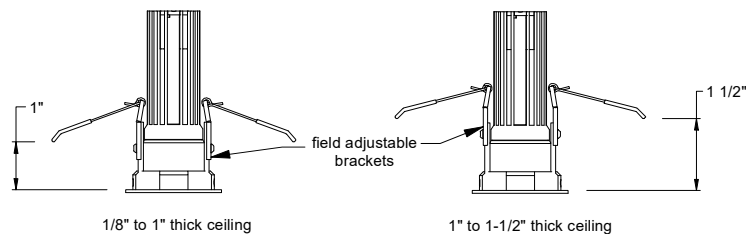
MOUNTING OPTIONS

RET - RETRO TRIM/TRIMLESS



RATINGS / CERTIFICATIONS	NC	RET	IC	ICAT	CP
TYPE NON-IC	✓	✓			
TYPE IC			✓	✓	✓
CHICAGO PLENUM (CCEA)					✓
SUITABLE FOR AIR HANDLING PLENUMS				✓	✓
REDUCED AIRFLOW ASTM E283				✓	✓

CEILING THICKNESS			
FIXTURE TYPE	MOUNTING TYPE		
	NC, IC, ICAT, CP, RET	NC, IC, ICAT, CP, RET	NC, IC, ICAT, CP, RET
	STANDARD CEILING THICKNESS	THICK CEILING THICKNESS	CEILING CUTOUT
TRIM	1/8" to 1.0"	1.0" to 1 1/2"	2-1/8" square
TRIMLESS	1/8" to 1.0"	1.0" to 1 1/2"	2-1/8" square
MILLWORK (TRIMLESS)	1/8" to 1.0"	1.0" to 1 1/2"	2-1/8" square

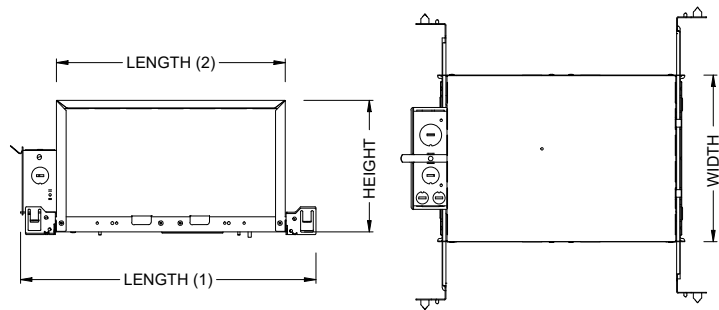


FIXTURE TILT INFO	
TILT	CEILING THICKNESS
0° TO 30°	1/8" to 1.0"
0° TO 20°	1.0" to 1 1/2"

IC - INSULATION CONTACT HOUSING

ICAT - INSULATION CONTACT / AIR TIGHT

CP - CHICAGO PLENUM



BOX SIZE	L 1	L 2	W	H
A	15 - 7/16"	11 - 3/4"	8 - 1/2"	6 - 3/4"

BOX TYPE / LUMEN OUTPUT - STANDARD BEAMS (12°-60°)			
LUMEN OUTPUT	BOX - A		
	CP	IC	ICAT
05LM	✓	✓	✓
07LM			

PROJECT INFORMATION			
JOB NAME		TYPE	
ORDERING CODE			

BATTERY OPTIONS

EMERGENCY BATTERY

IOTA's ILB Battery Backups are UL Listed LED emergency drivers that allow the same LED fixture to be used for both normal and emergency operation. In the event of a power failure, the ILB switches to the emergency mode and operates the existing fixture for 90 minutes. The unit contains a battery, charger, and converter circuit in a single can. The Constant Power design of the ILB maintains the output wattage to the LED array even as the system voltage diminishes. UL 924 Listed for U.S. and Canada. UL 1310 Certified, Output Class 2 Compliant. Includes single-piece TBTS test switch and charge indicator accessory kit. For use with switched and unswitched fixtures, and includes Two-wire universal AC input. Meets or exceeds all National Electric Code and Life Safety Code Emergency Lighting Requirements. Rated for use in Plenum, Damp Location, Recessed Type IC, and Enclosed and Gasketed Luminaires.

REMOTE TEST SWITCH

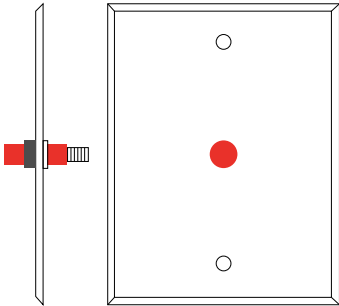
The Remote Test Switch may be mounted adjacent to the LED Fixture by others.

EMERGENCY BATTERY ACCESS

Above ceiling access is recommended for ease of service, but LED Fixture Sizes of 4" and Larger are capable of below ceiling access. IC/ICAT/CP Box and ITS option require an access panel in the ceiling (or other form of access) adjacent to the installation location of the Emergency Battery.

REMOTE LOCATION

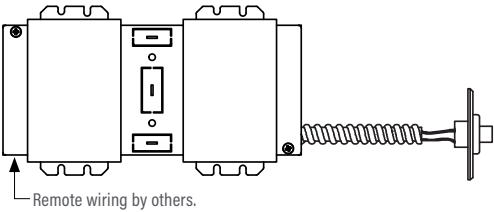
Maximum remote mounting distance of the emergency driver shall be 50 feet. Remote location wiring provided by others. Follow all Local and National Electric/ Building Codes.



Remote Test Switch

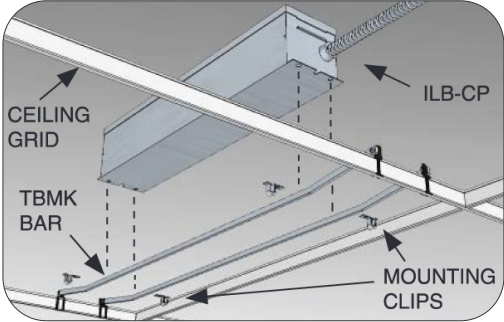
EM MODE OUTPUT (DELIVERED LUMENS)	
LUMEN ORDERING CODE	EM7
ALL OPTIONS (05LM TO 07LM)	400
NotesBased on 24K, 90CRI	

REMOTE EM BATTERY (REMOTE TEST SWITCH)



Accessory

76066 Optional T-Grid Mounting Kit¹



1. Can be used with any of the Emergency Battery Backups. Must be ordered as a separate line item.

PROJECT INFORMATION			
JOB NAME		TYPE	
ORDERING CODE			

AWNRS

Athena Wireless Node

The Athena wireless node is a radio frequency (RF) device that enables simple, digital control of individual light fixtures in an Athena control system.



Athena Wireless Node RF

AWNRS
Plenum rated and can be installed above the ceiling for wireless control of a fixture without any impact on fixture aesthetics.

FEATURES

- Enables individual, wireless control of each fixture in an Athena control system. Accommodates zone and control changes without rewiring.
- Installed at factory – no wiring required on-site. Fixture is ready to communicate wirelessly once power is connected.
- All drivers on the link are controlled as a single zone.

REGULATORY APPROVALS

- cULus Listed (UL916)
- Complies with requirements for use in other spaces used for environmental air (plenums) per NEC® 2014 300.22(C)(3).
- FCC compliant with the limits for a Class B digital device.
- IC (Industry Canada)
- ANSI C137.1 0-10 V- Electronic Off

POWER / LOAD

- IEC SELV/NEC® Class 2
- 1 Watt

ENVIRONMENTAL

- Ambient operating temperature (immediate vicinity of Athena wireless node): **32 °F to 131 °F** (0 °C to 55 °C), 0% to 90% humidity.

BATTERY OPTIONS

- For EM options please consult factory.

Note: Default behavior prior to programming

- Light level 100%
- Athena wireless node performs an unprogrammed startup sequence on every power up until the device is added to an Athena system.
- Each Athena wireless node should be installed within 25 ft (7.62 m) of two or more Athena wireless nodes or other Clear Connect – Type X devices.
- For Chicago plenum installations, the Athena wireless node may not be installed in the plenum space. It must be installed in the occupied space.

For servicing the driver/j-box, access above ceiling is required. (NC Mounting)

IC/ICAT/CP not available in AWRN.