

PROJECT INFORMATION		
JOB NAME		TYPE
ORDERING CODE		

NU1

1" Square Deep Regress Standard White

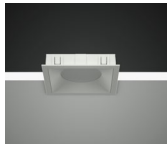
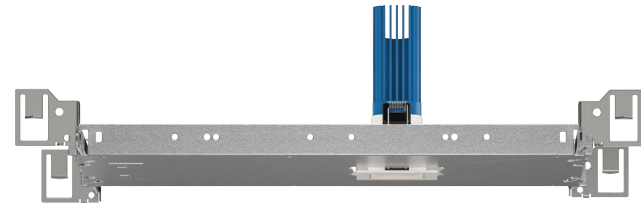


20° - 50° BEAM (Note: Specifications are subject to change without notice)			
6mm COB PERFORMANCE DATA			
LED LIGHT ENGINE	NOMINAL DELIVERED LUMENS	DRIVE CURRENT	LED WATTAGE
07LM	610LM @30K/80CRI	150MA	5.5W
10LM	790LM @30K/80CRI	200MA	7.5W
13LM	1110LM @30K/80CRI	300MA	11W
07LM	520LM @30K/90CRI	150MA	5.5W
10LM	670LM @30K/90CRI	200MA	7.5W
13LM	940LM @30K/90CRI	300MA	11W
Notes	Delivered lumens based on 20D optic with no lens, (see page 2)		

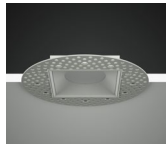


eldoLED
your product your area

14° BEAM (Note: Specifications are subject to change without notice)			
4.5mm COB PERFORMANCE DATA			
LED LIGHT ENGINE	NOMINAL DELIVERED LUMENS	DRIVE CURRENT	LED WATTAGE
07LM	610LM @30K/80CRI	150MA	5.5W
07LM	520LM @30K/90CRI	150MA	5.5W
Notes	Delivered lumens based on 14D optic with no lens, (see page 2)		



Trim



Trimless



Trimless Millwork

FEATURES

- 3/4" bezel regress with 1/16" micro flange
- 14° - 50° optical beam control
- Superior 38° cut off angle
- Up to 110 LPW
- UGR < 19
- Glare control, specialty optics, trim options, and custom finishes available
- Microban™ antimicrobial finish available on all exposed painted surfaces

DIMMING AND CONTROLS

- eldoLED flicker free 0-10V dimming to 0% and 1%
- eldoLED flicker free DALI 2 dimming to 0% and 1%
- Lutron Hi-lumen 2-Wire (Eco System) dimming to 0.1% and 1%
- Leading & trailing edge (Triac/ELV) dimming to 1%
- All driver offerings are remote with above ceiling access, see page 3 for details.
- Refer to DX remote panels for additional options.

CONSTRUCTION

- High-grade die-cast and cold forged aluminum alloy assembly that has superior thermal and corrosion resistance properties.
- Shatter proof acrylic bezel lens
- Electrocoated 16-gauge cold-rolled steel construction
- Accommodates ceiling thickness from 1/8" to 1-1/2", On-field thick ceiling adjustment

LED

- 90 CRI: SDCM = 2-step MacAdam Ellipse, Lumen Maintenance: L₇₀ > 66,000 hrs
- 80 CRI: SDCM = 2-step MacAdam Ellipse, Lumen Maintenance: L₇₀ > 66,000 hrs

LISTING

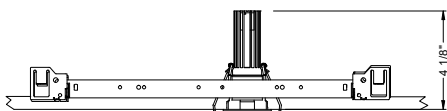
- ULus Listed to UL1598 & UL2108; cUL Listed to CSA C22.2 #250.0
- IP44 with lens - Suitable for wet locations with lens - Suitable for damp locations without lens
- NSF/ANSI-2 with lens (Non-Food and Splash Zones)
- 5 Year Limited warranty

ELECTRICAL

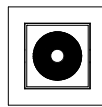
- Low voltage luminaire: 36Vdc nominal
- 07LM - 150mA
- 10LM - 200mA
- 15LM - 300mA

FIXTURE HEIGHT

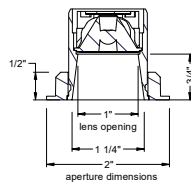
LED LIGHT ENGINE: 07LM - 13LM



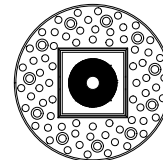
TRIMMED



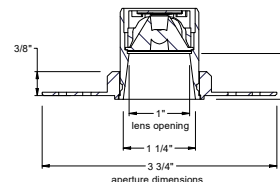
ceiling cutout
1-3/4" square
ceiling thickness
1/8" to 1 1/2"



TRIMLESS



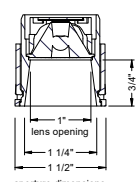
ceiling cutout
1-3/4" square
ceiling thickness
1/8" to 1 1/2"



MILLWORK



ceiling cutout
1-3/4" square
ceiling thickness
1/8" to 1 1/2"



alphabet

PROJECT INFORMATION		
JOB NAME		TYPE
ORDERING CODE		

ORDERING CODE																												
SERIES	NU1																											
TYPE	QDDR square downlight deep regress QDDRT square downlight deep regress trimless QDDRTMW square downlight deep regress trimless millwork																											
LED	SW standard white																											
DELIVERED LUMENS	07LM 610 lm 10LM 790 lm 13LM 1110 lm Standard Configuration: 3000K 80CRI 20D, NL Calculated Delivered Lumens = [Delivered Lumen Value] x [CCT Multiplier] x [Optic Multiplier] x [Lens Multiplier]																											
CCT	<table border="1"> <tr> <td>27K</td> <td>2700K</td> <td>CCT</td> <td>2700K</td> <td>3000K</td> <td>3500K</td> <td>4000K</td> </tr> <tr> <td>30K</td> <td>3000K</td> <td>CRI</td> <td>80+</td> <td>90+</td> <td>80+</td> <td>90+</td> </tr> <tr> <td>35K</td> <td>3500K</td> <td rowspan="2">CCT MULTIPLIER FOR LUMEN OUTPUT</td> <td>0.96</td> <td>0.81</td> <td>1.00</td> <td>.85</td> </tr> <tr> <td>40K</td> <td>4000K</td> <td>1.03</td> <td>.88</td> <td>1.06</td> <td>.91</td> </tr> </table>	27K	2700K	CCT	2700K	3000K	3500K	4000K	30K	3000K	CRI	80+	90+	80+	90+	35K	3500K	CCT MULTIPLIER FOR LUMEN OUTPUT	0.96	0.81	1.00	.85	40K	4000K	1.03	.88	1.06	.91
27K	2700K	CCT	2700K	3000K	3500K	4000K																						
30K	3000K	CRI	80+	90+	80+	90+																						
35K	3500K	CCT MULTIPLIER FOR LUMEN OUTPUT	0.96	0.81	1.00	.85																						
40K	4000K		1.03	.88	1.06	.91																						
CRI	80 80 CRI 90 90 CRI																											
OPTIC & LM MULTIPLIER SEE PAGE 6	14D ¹ 14 degrees (0.99) 20D 20 degrees (1.00) 30D 30 degrees (1.00) 40D 40 degrees (0.98) 50D 50 degrees (0.97)																											
BEZEL LENS SEE PAGE 5	NL ² no lens (1.00) CL clear lens (0.98) DL diffused lens (0.90) HCL honeycomb louver (0.85) HET high efficiency textured lens, similar to Solite™ (0.91) SBL smoothing beam lens (0.91)																											
Maximum 2pcs of media per fixture.																												
TRIM COLOR SEE PAGE 5	BK black WH white MC matte chrome BZ bronze WT wheat CC ³ custom color, consult factory for details Antimicrobial finish, add AM to black, white or matte chrome i.e. BKAM. Not applicable to trimless option. Do not include in trimless ordering code.																											
BEZEL COLOR SEE PAGE 5	BK black (0.98) WH white (1.00) MC matte chrome (0.99) BZ bronze (0.98) WT wheat (0.99) CC ³ custom color, consult factory for details Antimicrobial finish, add AM to black, white or matte chrome i.e. BKAM.																											

ORDERING CODE	
MOUNTING OPTIONS SEE PAGE 8, 9	NC new construction with ceiling fitting plate
	IC insulation contact housing
	ICAT insulation contact/airtight housing
	CP chicago plenum housing
	RET retrofit, no ceiling fitting plate
NCINH ⁴ new construction with ceiling fitting plate, IC rated, inherently protected	
remote driver housing only	
VOLTAGE	LVL low voltage luminaire
DIMMING	ND No driver included. See page 3 for remote driver options.

YOUR COMPLETED ORDERING CODE
Follow the steps to specify your fixture, example: NU1 - QDDR - SW - 10LM - 35K - 90 - 30D - HET - WH - WH - NC - LVL - ND

NOTES

- 14D available in 07LM.
- NL option does not meet requirements for AT/DF/WET/NSF listings. Lensing cannot be added in the field.
- HCL not available with lens.
- Custom set up fee plus minimum quantity required per color.
- NCINH available in 07LM.

alphabet

PROJECT INFORMATION		
JOB NAME		TYPE
ORDERING CODE		

REMOTE DRIVER - ORDERING CODE		
SERIES	DX-C	compact driver box
NUMBER OF DRIVERS	1-5	number of drivers, 1-5
CURRENT	150	150mA
	200	200mA
	300	300mA
VOLTAGE	120	120V
	UNV	120V-277V
DIMMING	DIM10	eldoLED flicker free 0-10V dimming to 1%
	DIM10Z	eldoLED flicker free 0-10V dimming to 0%
	DALI	eldoLED flicker free DALI 2 dimming to 1%
	DALIZ	eldoLED flicker free DALI 2 dimming to 0%
	DMX-RJ45¹	DMX control dimming to 0.1% with RJ45 connection
	DMX-WL¹	DMX control dimming to 0.1% with wire lead connection
	DMX-XLR¹	DMX control dimming to 0.1% with XLR 5pin connection
	LUT	Lutron Hi-lume Ecosystem dimming to 1%, Soft-on & Fade-to-Black
	LUTP	Lutron Hi-lume Premier Ecosystem dimming to 0.1%, Soft-on & Fade-to-Black
	ELV²	leading & trailing edge (Triac/ELV) dimming to 1%
NLT	nLight control interface: standard Cat-5/RJ45 connection (female), dim to off	
CAS	AWNR³	Casambi Bluetooth control with flicker free 1% dimming lutron athena wireless node
	EM7	emergency battery backup, 90 minutes at 7W to LED
ELECTRICAL OPTIONS	EM12	emergency battery backup, 90 minutes at 12W to LED
	EM10CA20	remote emergency battery backup, 90 minutes at 10W to LED, CA title 20

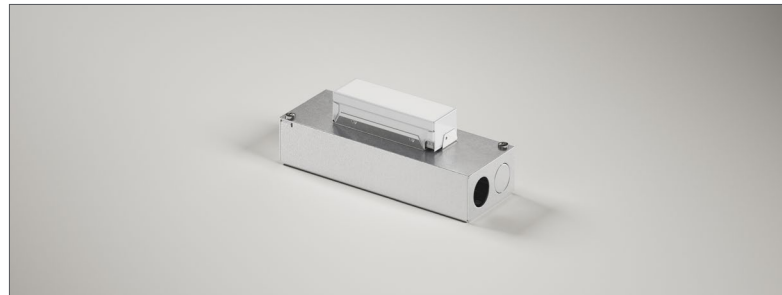
20° - 50° BEAM (Note: Specifications are subject to change without notice)		
6mm COB PERFORMANCE DATA		
LED LIGHT ENGINE	NOMINAL DELIVERED LUMENS	SYSTEM WATTAGE
07LM	610LM @30K/80CRI	7W
10LM	790LM @30K/80CRI	9W
13LM	1110LM @30K/80CRI	14W
07LM	520LM @30K/90CRI	7W
10LM	670LM @30K/90CRI	9W
13LM	940LM @30K/90CRI	14W

14° BEAM (Note: Specifications are subject to change without notice)		
4.5mm COB PERFORMANCE DATA		
LED LIGHT ENGINE	NOMINAL DELIVERED LUMENS	SYSTEM WATTAGE
07LM	610LM @30K/80CRI	8W
07LM	520LM @30K/90CRI	8W

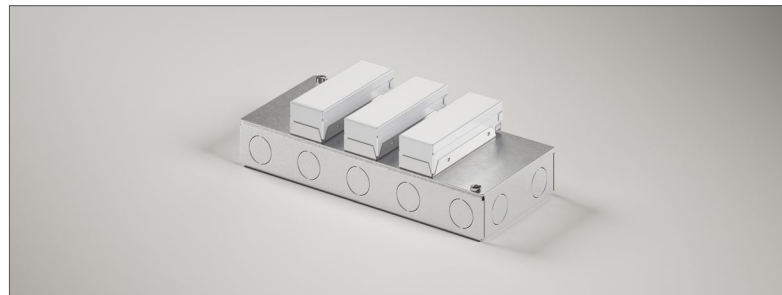
ELECTRICAL/CONTROLS

- 120V-277V, 120 only Triac / ELV
- Power factor ≥ 0.9
- 2kV driver input surge protection
- Remote emergency test switch
- 7W, 10W (T20 CEC) and 12W EM 90min battery
- Max. ambient installation temperature 95°F (35°C)
- Minimum wire gauge approved mounting distance 18 AWG, 330 feet
- Maximum Remote mounting distance of EM driver shall be 50 feet

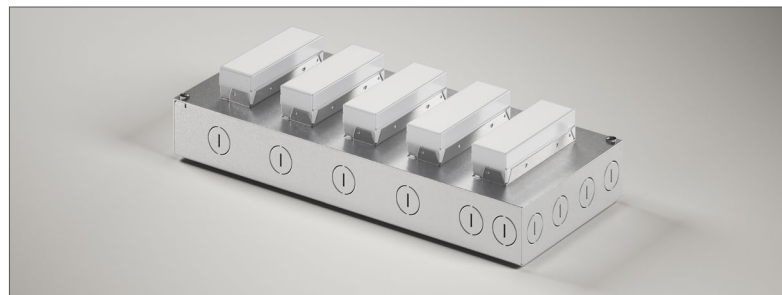
REMOTE SINGLE DRIVER BOX (DMX and EM)



REMOTE 2 TO 3 DRIVER BOX (2 Drivers for LUT)



REMOTE 4 TO 5 DRIVER BOX (3 Drivers for LUT)



YOUR COMPLETED ORDERING CODE
Follow the steps to specify your fixture, example:
DX-C - 1 - 300 - UNV - DIM10 - EM7

NOTES

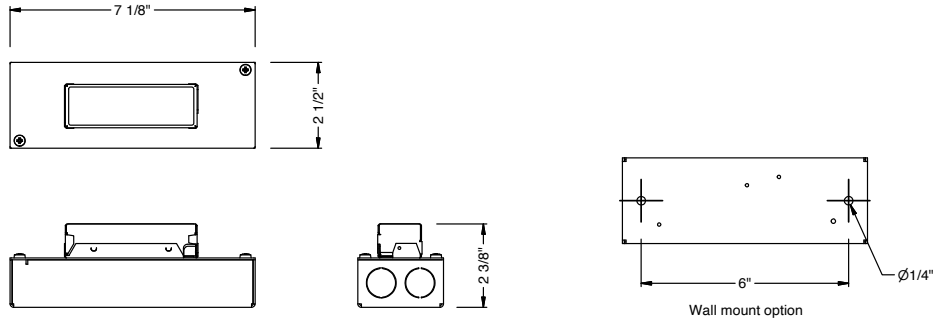
1. DMX available in single driver option.
2. ELV available in 120V.
3. AWNR reference page 10, for product specification on Athena wireless node.
4. EM options available only in single driver box.

*EldoLED uses logarithmic dimming curve as standard. For linear dimming curve, add "LIN" after dimming code, i.e. DIM10LIN.

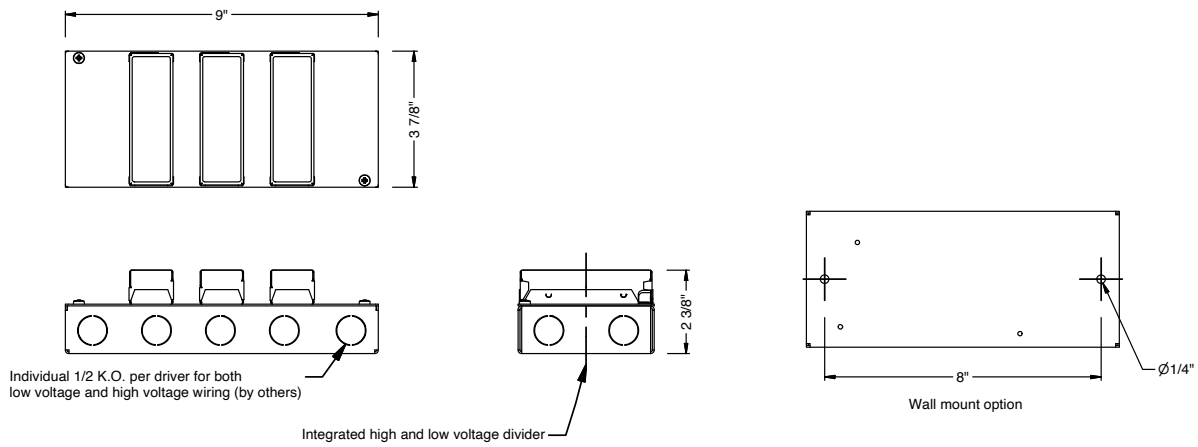
PROJECT INFORMATION		
JOB NAME		TYPE
ORDERING CODE		

DRIVER BOXES

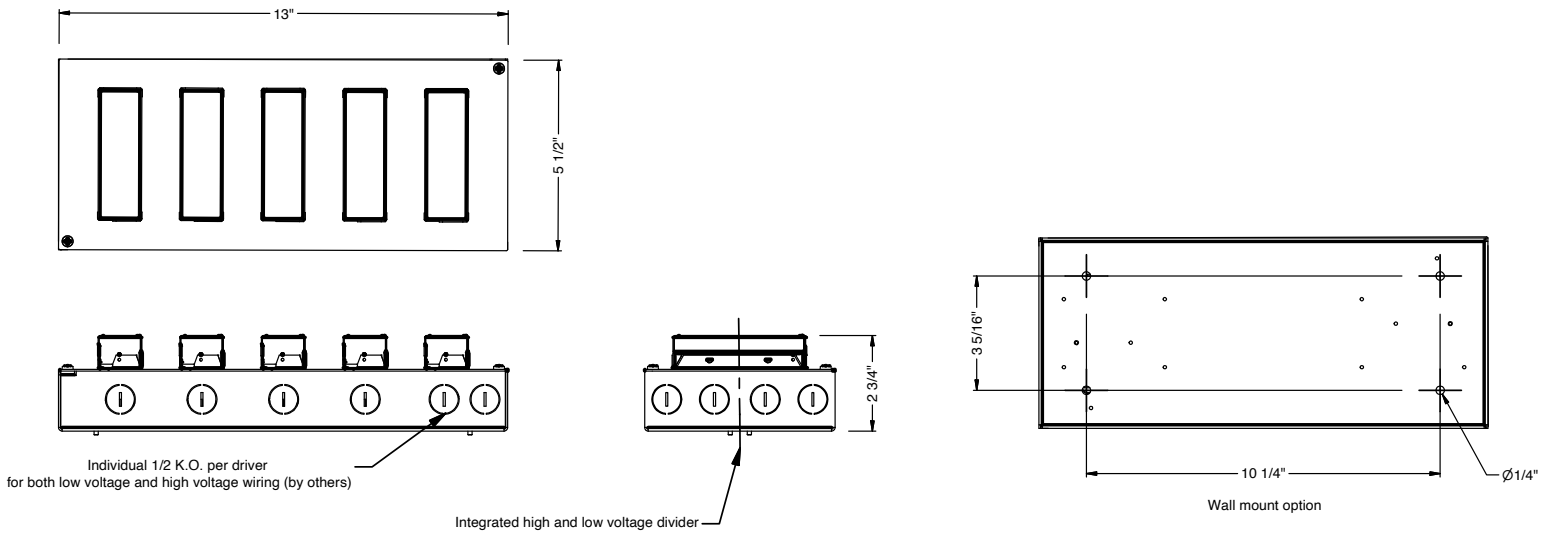
REMOTE SINGLE DRIVER BOX (DMX and EM)



REMOTE 2 TO 3 DRIVER BOX (2 Drivers for LUT)



REMOTE 4 TO 5 DRIVER BOX (3 Drivers for LUT)



alphabet

PROJECT INFORMATION		
JOB NAME		TYPE
ORDERING CODE		

TRIM OPTIONS

TRIM/BEZEL COLORS



WH



MC



BK



BZ



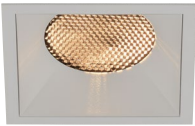
WT

OPTICAL OPTIONS

- UGR calculation based on CIE 117-1995; room size: 4H X 8H, reflectance: 70/50/20;
- UGR calculation based on 07LM BK fixtures, unless otherwise noted.

HCL

Honeycomb Louver



OPTIC	BEAM ANGLE	UGR
14D	13	8.4
20D	17.2	7.7
30D	25.4	7.6
40D	31.6	10.4
50D	38	16.3

NL

No Lens



OPTIC	BEAM ANGLE	UGR	UGR15LM
14D	14	9	
20D	18	7.5	21.4
30D	28	9.4	22.2
40D	36	13.4	24.6
50D	48	21	29

CL

Clear Lens



OPTIC	BEAM ANGLE	UGR
14D	14	8.7
20D	18	8
30D	28.2	9
40D	35.4	13.3
50D	46.3	20.5

DL

Diffused Lens



OPTIC	BEAM ANGLE	UGR
20D	33.5	13.7
30D	38.5	15.7
40D	41.9	17.9
50D	50.8	20

HET

High Efficiency Textured Lens



OPTIC	BEAM ANGLE	UGR
14D	15	9.7
20D	23.2	9
30D	30	11
40D	35.6	14.7
50D	46.3	20

SBL

Smoothing Beam Lens



OPTIC	BEAM ANGLE	UGR
14D	15	8.8
20D	19.7	8.4
30D	28.8	9.7
40D	35.4	13.9
50D	46.4	20.2

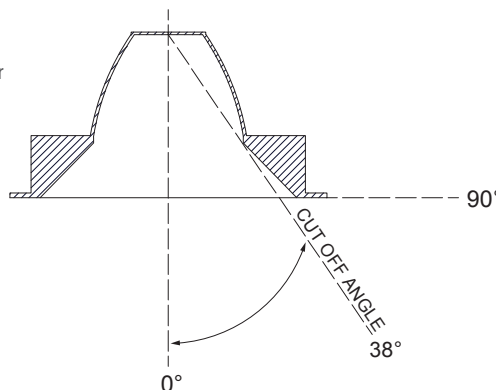
GLARE CONTROL

CUT-OFF ANGLE

Visual comfort is achieved with a lower cut-off angle due to improved glare control. The smaller the cut-off angle, the easier it is on the eye.

Alphabet downlights have been thoughtfully engineered to eliminate glare while still delivering functional illumination.

- Cut-off angle of NL and CL is 38°



alphabet

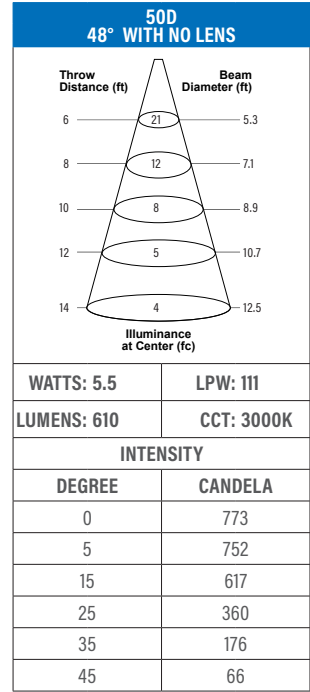
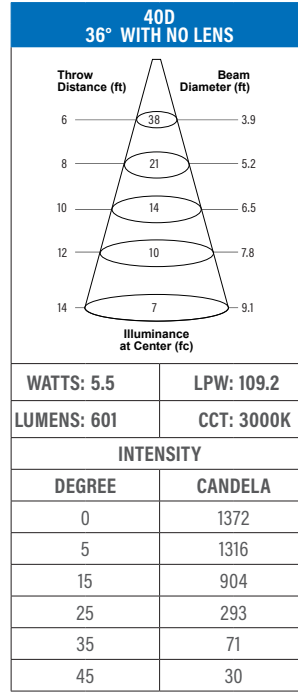
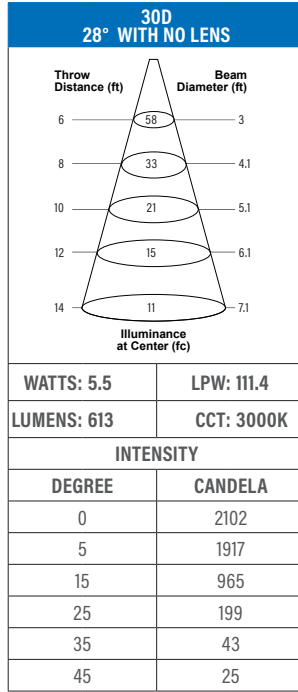
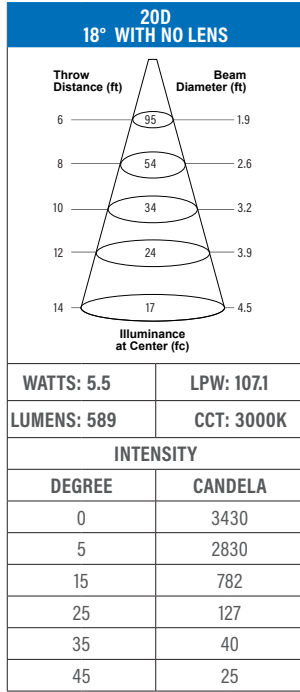
PROJECT INFORMATION		
JOB NAME		TYPE
ORDERING CODE		

PHOTOMETRIC DATA

07LM CCT MULTIPLIERS

	80CRI	90CRI
2700K	0.96	0.81
3000K	1	0.85
3500K	1.03	0.88
4000K	1.06	0.91

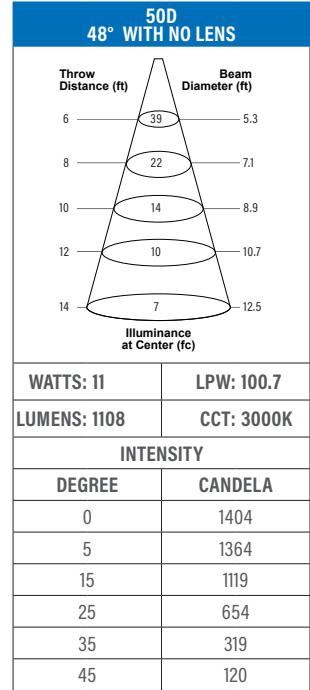
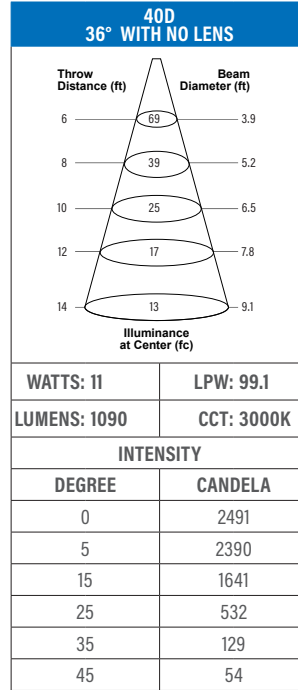
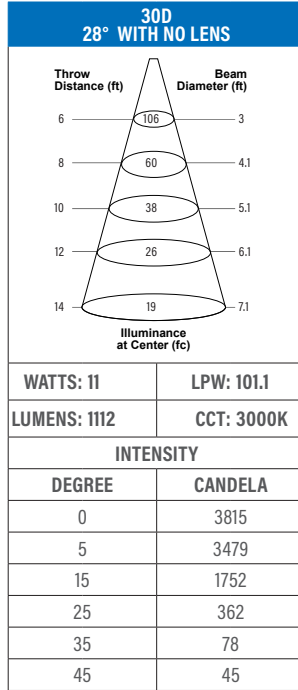
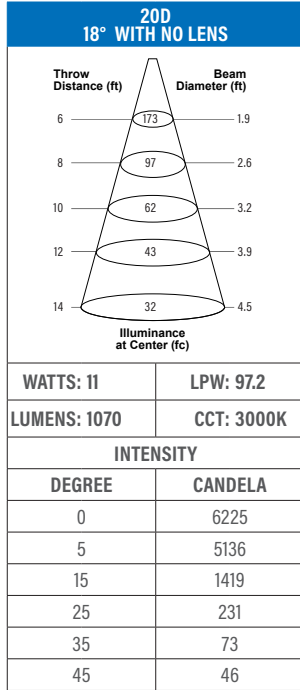
FC Formula = CBCP / Distance²



13LM CCT MULTIPLIERS

	80CRI	90CRI
2700K	0.96	0.81
3000K	1	0.85
3500K	1.03	0.88
4000K	1.06	0.91

FC Formula = CBCP / Distance²

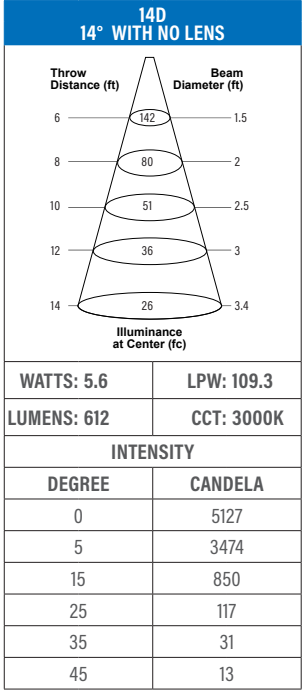


alphabet

PROJECT INFORMATION		
JOB NAME		TYPE
ORDERING CODE		

PHOTOMETRIC DATA

07LM CCT MULTIPLIERS		
	80CRI	90CRI
2700K	0.96	0.81
3000K	1	0.85
3500K	1.03	0.88
4000K	1.06	0.91
FC Formula = CBCP / Distance ²		

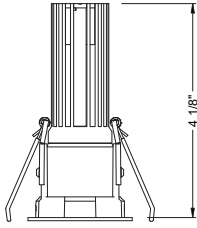


PROJECT INFORMATION		
JOB NAME		TYPE
ORDERING CODE		

MOUNTING OPTIONS

FIXTURE HEIGHT

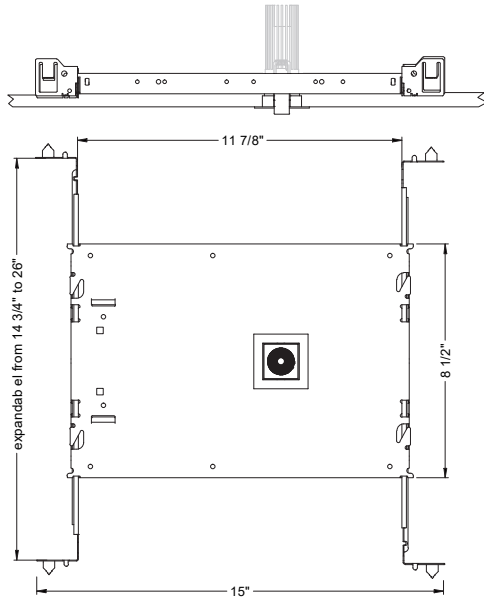
LED LIGHT ENGINE: 07 - 13LM



TRIMMED, TRIMLESS & MILLWORK

NC - NEW CONSTRUCTION

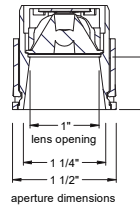
TRIM



TRIM



ceiling cutout
1-3/4" square
ceiling thickness
1/8" to 1 1/2"

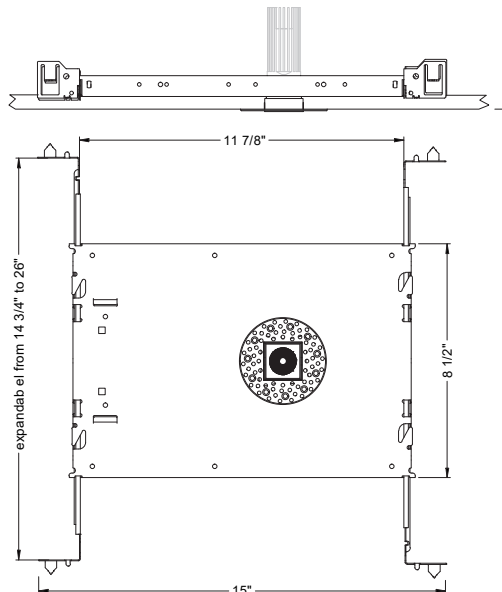


aperture dimensions

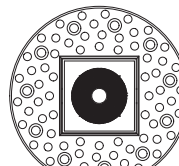
ADDITIONAL MOUNTING INFO

New Construction Bar Hangers (included)	Mounting Length: 14-3/4" to 26"
Extension Kit p/n: K20266 (ordered separately, 1 per fixture)	Extends a pair of Bar Hangers Total Mounting Length: 29" to 48"

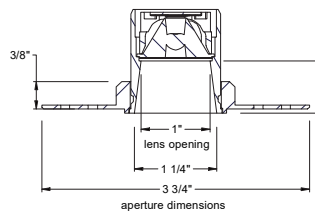
TRIMLESS



TRIMLESS

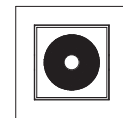


ceiling cutout
1-3/4" square
ceiling thickness
1/8" to 1 1/2"

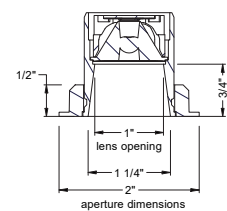


aperture dimensions

TRIMLESS/MILLWORK



ceiling cutout
1-3/4" square
ceiling thickness
1/8" to 1 1/2"

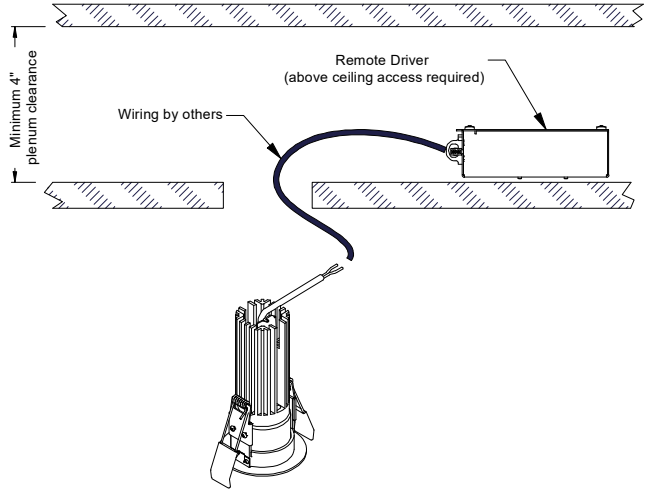


aperture dimensions

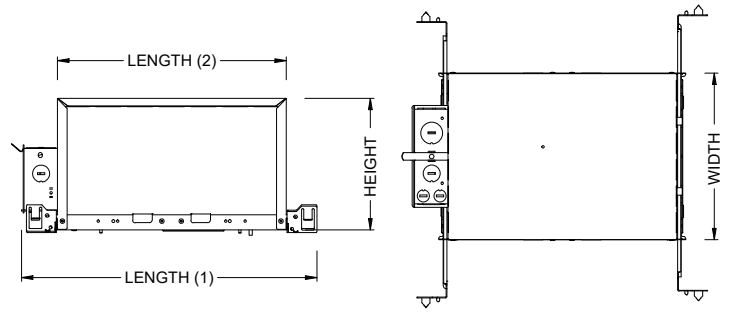
PROJECT INFORMATION		
JOB NAME		TYPE
ORDERING CODE		

MOUNTING OPTIONS

RET - RETRO TRIM/TRIMLESS



IC - INSULATION CONTACT HOUSING ICAT - INSULATION CONTACT / AIR TIGHT CP - CHICAGO PLENUM

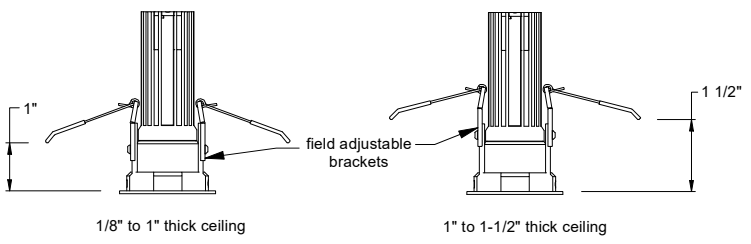


BOX SIZE	L1	L2	W	H
A	15 - 7/16"	11 - 3/4"	8 - 1/2"	6 - 3/4"

RATINGS / CERTIFICATIONS	NC	RET	IC	ICAT	CP
TYPE NON-IC	✓	✓			
TYPE IC			✓	✓	✓
CHICAGO PLENUM (CCEA)					✓
SUITABLE FOR AIR HANDLING PLENUMS				✓	✓
REDUCED AIRFLOW ASTM E283	✓	✓	✓	✓	✓

BOX TYPE / LUMEN OUTPUT - STANDARD BEAMS (14°-50°)			
LUMEN OUTPUT	BOX-A		
	CP	IC	ICAT
07LM	✓	✓	✓
10LM	✓	✓	✓
13LM			

CEILING THICKNESS		
FIXTURE TYPE	MOUNTING TYPE	
	NC, IC, ICAT, CP, RET	NC, IC, ICAT, CP, RET
	STANDARD CEILING THICKNESS	THICK CEILING THICKNESS
TRIM	1/8" to 1.0"	1.0" to 1 1/2"
TRIMLESS	1/8" to 1.0"	1.0" to 1 1/2"
MILLWORK (TRIMLESS)	1/8" to 1.0"	1.0" to 1 1/2"



PROJECT INFORMATION		
JOB NAME		TYPE
ORDERING CODE		

BATTERY OPTIONS

EMERGENCY BATTERY

IOTA's ILB Battery Backups are UL Listed LED emergency drivers that allow the same LED fixture to be used for both normal and emergency operation. In the event of a power failure, the ILB switches to the emergency mode and operates the existing fixture for 90 minutes. The unit contains a battery, charger, and converter circuit in a single can. The Constant Power design of the ILB maintains the output wattage to the LED array even as the system voltage diminishes. UL 924 Listed for U.S. and Canada. UL 1310 Certified, Output Class 2 Compliant. Includes single-piece TBTS test switch and charge indicator accessory kit. For use with switched and unswitched fixtures, and includes Two-wire universal AC input. Meets or exceeds all National Electric Code and Life Safety Code Emergency Lighting Requirements. Rated for use in Plenum, Damp Location, Recessed Type IC, and Enclosed and Gasketed Luminaires.

REMOTE TEST SWITCH

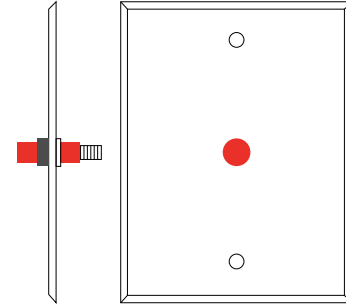
The Remote Test Switch may be mounted adjacent to the LED Fixture by others.

EMERGENCY BATTERY ACCESS

Above ceiling access is recommended for ease of service, but LED Fixture Sizes of 4" and Larger are capable of below ceiling access. IC/ICAT/CP Box and ITS option require an access panel in the ceiling (or other form of access) adjacent to the installation location of the Emergency Battery.

REMOTE LOCATION

Maximum remote mounting distance of the emergency driver shall be 50 feet. Remote location wiring provided by others. Follow all Local and National Electric/Building Codes.



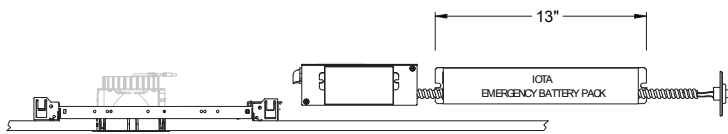
Remote Test Switch

EM MODE OUTPUT (DELIVERED LUMENS)

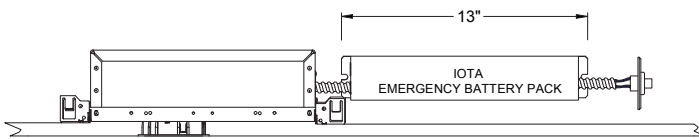
LUMEN ORDERING CODE	EM7	EM10	EM12
ALL OPTIONS (07LM TO 13LM)	600	800	1000

Notes: Based on 30K, 80CRI

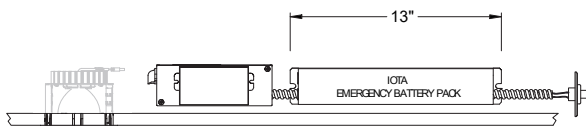
NC - NEW CONSTRUCTION WITH EM BATTERY (REMOTE TEST SWITCH)



IC / ICAT / CP - INSULATION CONTACT HOUSING WITH EM BATTERY (REMOTE TEST SWITCH)

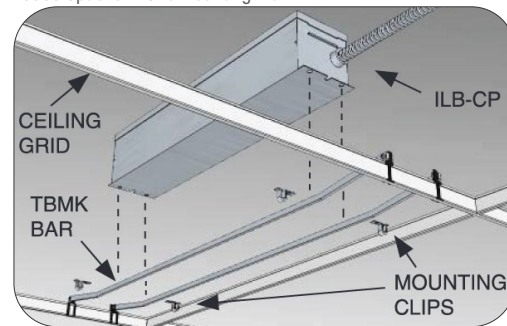


RET - RETROFIT WITH EM BATTERY (REMOTE TEST SWITCH)



Accessory

76066 Optional T-Grid Mounting Kit¹



1. Can be used with any of the Emergency Battery Backups. Must be ordered as a separate line item.

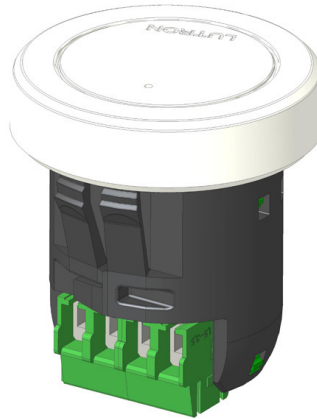
PROJECT INFORMATION		
JOB NAME	TYPE	
ORDERING CODE		

AWNRR OPTIONS



Athena Wireless Node

The Athena wireless node is a radio frequency (RF) device that enables simple, digital control of individual light fixtures in an Athena control system.



Athena Wireless Node RF

AWNRR

Plenum rated and can be installed above the ceiling for wireless control of a fixture without any impact on fixture aesthetics.

FEATURES

- Enables individual, wireless control of each fixture in an Athena control system. Accommodates zone and control changes without rewiring.
- Installed at factory – no wiring required on-site. Fixture is ready to communicate wirelessly once power is connected.
- All drivers on the link are controlled as a single zone.

REGULATORY APPROVALS

- cULus Listed (UL916)
- Complies with requirements for use in other spaces used for environmental air (plenums) per NEC® 2014 300.22(C)(3).
- FCC compliant with the limits for a Class B digital device.
- IC (Industry Canada)
- ANSI C137.1 0–10 V- Electronic Off

POWER / LOAD

- IEC SELV/NEC® Class 2
- 1 Watt

ENVIRONMENTAL

- Ambient operating temperature (immediate vicinity of Athena wireless node): **32 °F to 131 °F** (0 °C to 55 °C), 0% to 90% humidity.

BATTERY OPTIONS

- For EM options please consult factory.

Note: Default behavior prior to programming

- Light level 100%
- Athena wireless node performs an unprogrammed startup sequence on every power up until the device is added to an Athena system.

- Each Athena wireless node should be installed within 25 ft (7.62 m) of two or more Athena wireless nodes or other Clear Connect – Type X devices.
- For Chicago plenum installations, the Athena wireless node may not be installed in the plenum space. It must be installed in the occupied space.

For servicing the driver/j-box, access above ceiling is required. (NC Mounting)

IC/ICAT/CP not available in AWNR.