

PROJECT INFORMATION		
JOB NAME		TYPE
ORDERING CODE		

NU1

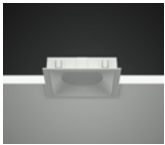
1" Square Downlight Tunable White



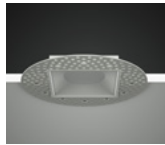
20° - 60° BEAM (Note: Specifications are subject to change without notice)			
6mm COB PERFORMANCE DATA			
LED LIGHT ENGINE	NOMINAL DELIVERED LUMENS	DRIVE CURRENT	LED WATTAGE
07LM	730LM @30K/95CRI	175mA	7W
Notes	Delivered lumens based on 60D optic with no lens, (see page 2)		



eldoLED
your product our area



Trim



Trimless



Trimless Millwork

FEATURES

- 3/8" bezel regress with 1/16" micro flange
- 20° - 60° optical beam control
- UGR < 19
- Up to 70 LPW
- Glare control, specialty optics, trim options, and custom finishes available
- Microban® antimicrobial finish available on all exposed painted surfaces

LED

- Luminus tunable white COB from 2700K - 6500K: 95 CRI, R9 > 70: SDCM = 4-step MacAdam Ellipse; Lumen Maintenance: L₇₀ > 54,000 hrs

DIMMING AND CONTROLS

- eldoLED flicker free 0-10V dimming to 0%
- eldoLED flicker free DALI dimming to 0%
- Casambi bluetooth dimming to 0%
- NLight control interface dimming to 0%
- All driver offerings are remote with above ceiling access, see page 3 for details.
- Refer to DX remote panels for additional options.

LISTING

- ULus Listed to UL1598 & UL2108; cUL Listed to CSA C22.2 #250.0
- IP44 with lens - Suitable for wet locations with lens - Suitable for damp locations without lens
- NSF/ANSI-2 with lens (Non-Food and Splash Zones)
- 5 Year Limited warranty

CONSTRUCTION

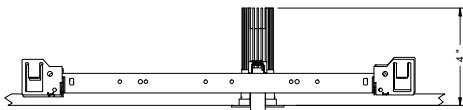
- High-grade die-cast and cold forged aluminum alloy assembly that has superior thermal and corrosion resistance properties.
- Shatter proof acrylic bezel lens
- Electrocoated 16-gauge cold-rolled steel construction
- Accommodates ceiling thickness from 1/8" to 1-1/2", On-field thick ceiling adjustment

ELECTRICAL

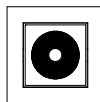
- Low voltage luminaire: 36Vdc nominal
- 07LM - 175mA

FIXTURE HEIGHT

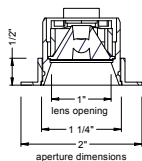
LED LIGHT ENGINE: 07LM



TRIMMED

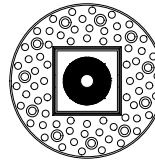


ceiling cutout
1-3/4" square
ceiling thickness
1/8" to 1 1/2"

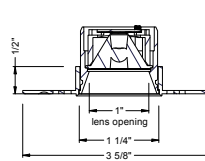


1 1/2"
1"
lens opening
1 1/4"
2"
aperture dimensions

TRIMLESS



ceiling cutout
1-3/4" square
ceiling thickness
1/8" to 1 1/2"

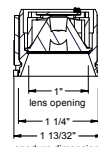


1 1/2"
1"
lens opening
1 1/4"
3 5/8"
aperture dimensions

MILLWORK



ceiling cutout
1-7/16" square
ceiling thickness
1/8" to 1 1/2"



1 1/2"
1"
lens opening
1 1/4"
1 13/32"
aperture dimensions

alphabet

PROJECT INFORMATION		
JOB NAME		TYPE
ORDERING CODE		

		ORDERING CODE							
SERIES	NU1	NU1							
TYPE	QD	square downlight							
	QDT	square downlight trimless							
	QDTMW	square downlight trimless millwork							
LED	TW	tunable white (Luminus)							
DELIVERED LUMENS	07LM	730 lm							
	Standard Configuration: 3000K 60D, NL Calculated Delivered Lumens = [Delivered Lumen Value] x [Optic Multiplier] x [Lens Multiplier]								
CCT	2765	2700K to 6500K tunable white							
		CCT	2700K	3000K	3500K	4000K	5000K	5700K	6500K
		CCT MULTIPLIER FOR LUMEN OUTPUT	0.91	0.98	1	0.99	1	1.01	1.02
	EML RATIO	0.49	0.57	0.68	0.79	0.96	1.04	1.12	
CRI	95	95 typical, 90 minimum							
OPTIC & LM MULTIPLIER SEE PAGE 6	20D¹	20 degrees	(0.95)						
	30D	30 degrees	(0.95)						
	40D	40 degrees	(0.93)						
	60D	60 degrees	(1.00)						
BEZEL LENS SEE PAGE 5	NL²	no lens	(1.00)						
	CL	clear lens	(0.95)						
	DL	diffused lens	(0.86)						
	E³	elliptical beam spread	(0.85)						
	HCL	honeycomb louver	(0.58)						
	HET	high efficiency textured lens, similar to Solite™	(0.92)						
	SBL	smoothing beam lens	(0.92)						
Maximum 2pcs of media per fixture.									
TRIM COLOR SEE PAGE 5	BK	black							
	WH	white							
	MC	matte chrome							
	BZ	bronze							
	WT	wheat							
	CC⁴	custom color, consult factory for details							
Antimicrobial finish, add AM to black, white or matte chrome i.e. BKAM.									
Not applicable to trimless option. Do not include in trimless ordering code.									
BEZEL COLOR SEE PAGE 5	BK	black	(0.98)						
	WH	white	(1.00)						
	MC	matte chrome	(0.99)						
	BZ	bronze	(0.98)						
	WT	wheat	(0.99)						
	CC⁴	custom color, consult factory for details							
Antimicrobial finish, add AM to black, white or matte chrome i.e. BKAM.									

		ORDERING CODE	
MOUNTING OPTIONS SEE PAGE 7, 8	NC	new construction with ceiling fitting plate	
	IC⁵	insulation contact housing	
	ICAT⁵	insulation contact/airtight housing	
	CP⁵	chicago plenum housing	
	RET	retrofit, no ceiling fitting plate	
		remote driver housing only	
VOLTAGE	LVL	low voltage luminaire	
DIMMING	ND	No driver included. See page 3 for remote driver options.	

YOUR COMPLETED ORDERING CODE	
Follow the steps to specify your fixture, example:	
NU1 - QD - TW - 07LM - 2765 - 95 - 30D - HET - WH - WH - NC - LVL - ND	

NOTES

- 20D available with DL, E, HET, SBL lens options.
- NL option does not meet requirements for AT/WET/NSF listings.
- Elliptical beam distributions [20D= 40° x 60°, 30D= 45° x 60°, 40D= 50° x 65°, 60D= 65° x 75°]
- Custom set up fee plus minimum quantity required per color.
- IC/ICAT/CP not available in QDTMW.

alphabet

PROJECT INFORMATION		
JOB NAME		TYPE
ORDERING CODE		

REMOTE DRIVER - ORDERING CODE		
SERIES	DX-C	compact driver box
NUMBER OF DRIVERS	1	number of drivers, 1
CURRENT	175	175mA
VOLTAGE	120 UNV	120V 120V-277V
DIMMING	DIM10Z	eldoLED flicker free 0-10V dimming to 0%
	DALIZ	eldoLED flicker free DALI 2 dimming to 0%
	NLT	nLight control interface: standard Cat-5/RJ45 connection (female), dim to off
	CASZ	Casambi Bluetooth dim to zero

20° - 60° BEAM (Note: Specifications are subject to change without notice)		
6mm COB PERFORMANCE DATA		
LED LIGHT ENGINE	NOMINAL DELIVERED LUMENS	SYSTEM WATTAGE
07LM	730LM @30K/95CRI	11W
Notes	Delivered lumens based on 60D optic with no lens, (see page 2)	

YOUR COMPLETED ORDERING CODE
Follow the steps to specify your fixture, example:
DX-C - 1 - 175 - UNV - DIM10Z

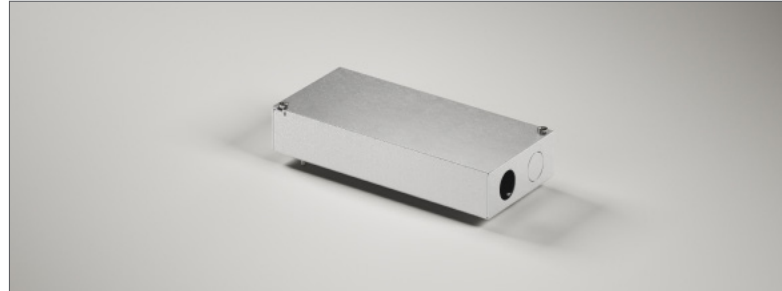
NOTES

- *EldoLED uses logarithmic dimming curve as standard. For linear dimming curve, add "LIN" after dimming code, i.e. DIM10LIN.

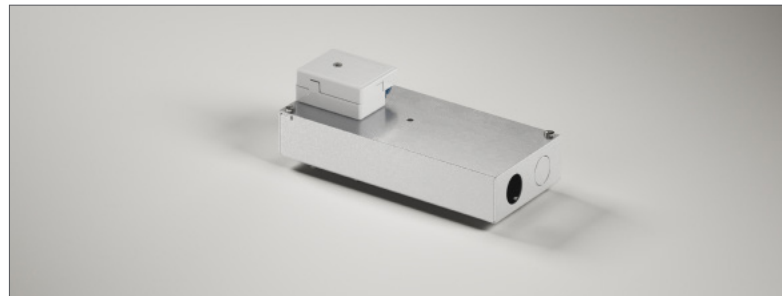
ELECTRICAL/CONTROLS

- 120V-277V
- Power factor ≥ 0.9
- 2kV driver input surge protection
- Max. ambient installation temperature 95°F (35°C)
- Minimum wire gauge approved mounting distance 18 AWG, 330 feet
- Maximum Remote mounting distance of EM driver shall be 50 feet

REMOTE SINGLE DRIVER BOX (DIM10Z & DALIZ)



REMOTE SINGLE DRIVER BOX (NLT & CASZ)

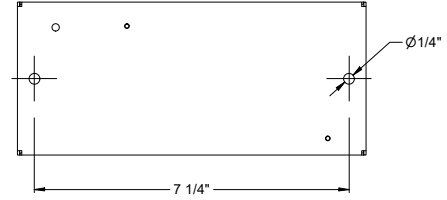
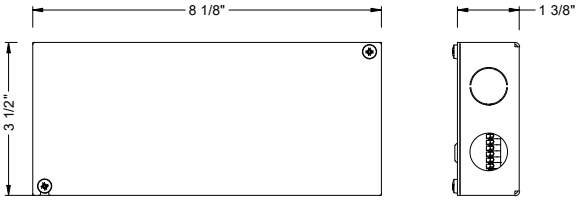


alphabet

PROJECT INFORMATION		
JOB NAME		TYPE
ORDERING CODE		

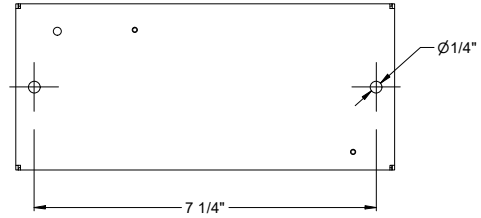
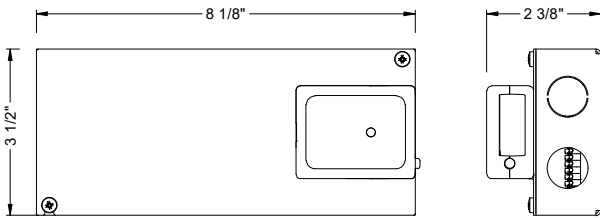
DRIVER BOXES

REMOTE SINGLE DRIVER BOX (DIM10Z & DALIZ)



Wall mount option

REMOTE SINGLE DRIVER BOX (NLT & CASZ)



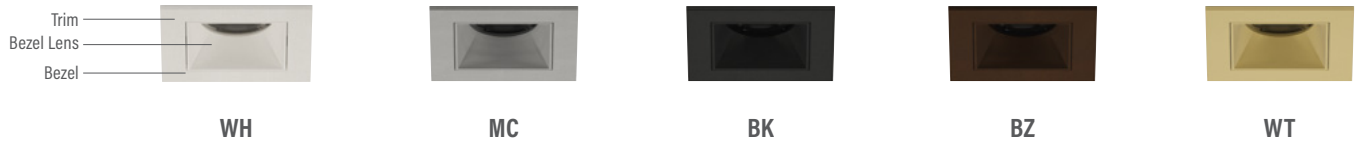
Wall mount option

alphabet

PROJECT INFORMATION		
JOB NAME		TYPE
ORDERING CODE		

TRIM OPTIONS

TRIM/BEZEL COLORS



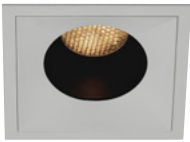
Trim
Bezel Lens
Bezel

OPTICAL OPTIONS

- UGR calculation based on CIE 117-1995; room size: 4H X 8H, reflectance: 70/50/20;
- UGR calculation based on 07LM BK bezel fixtures, unless otherwise noted.

HCL

Honeycomb Louver



OPTIC	BEAM ANGLE	UGR
30D	26	11.3
40D	34	13.8
60D	45	19.7

NL

No Lens



OPTIC	BEAM ANGLE	UGR
30D	32	16.5
40D	43	18.5
60D	57	25

CL

Clear Lens



OPTIC	BEAM ANGLE	UGR
30D	30	16.2
40D	40	18.3

DL

Diffused Lens



OPTIC	BEAM ANGLE	UGR
20D	41	20.2
30D	46	21.6
40D	50	23.2
60D	62	26.1

HET

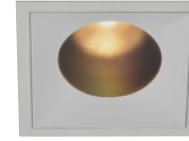
High Efficiency Textured Lens



OPTIC	BEAM ANGLE	UGR
20D	25	15.7
30D	32	17.1
40D	41	19.4
60D	55	24.6

SBL

Smoothing Beam Lens



OPTIC	BEAM ANGLE	UGR
20D	23	14.8
30D	31	16.2
40D	40	18.6
60D	55	24.3

E

Elliptical Lens



OPTIC	BEAM ANGLE	UGR
20D	41x58	20x24
30D	46x62	20x25
40D	49x66	22x26
60D	62x76	25x28

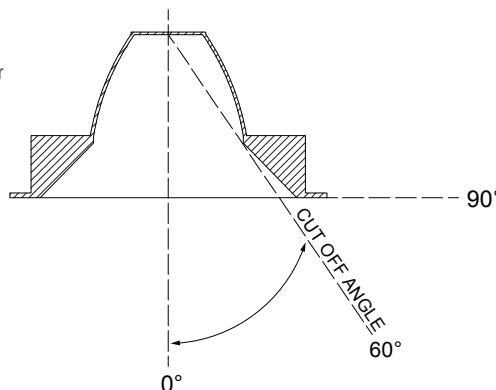
GLARE CONTROL

CUT-OFF ANGLE

Visual comfort is achieved with a lower cut-off angle due to improved glare control. The smaller the cut-off angle, the easier it is on the eye.

Alphabet downlights have been thoughtfully engineered to eliminate glare while still delivering functional illumination.

- Cutoff angle of NL and CL is 60 degrees;



alphabet

PROJECT INFORMATION		
JOB NAME		TYPE
ORDERING CODE		

PHOTOMETRIC DATA

20D 23° WITH SBL LENS	
Throw Distance (ft)	Beam Diameter (ft)
6	2.5
8	3.3
10	4.1
12	4.9
14	5.8
Illuminance at Center (fc)	
65	
37	
23	
16	
12	
WATTS: 7 LPW: 90.2	
LUMENS: 632 CCT: 3000K	
INTENSITY	
DEGREE	CANDELA
0	2346
5	2065
15	814
25	300
35	70
45	25

30D 32° WITH NO LENS	
Throw Distance (ft)	Beam Diameter (ft)
6	3.4
8	4.6
10	5.7
12	6.8
14	8
Illuminance at Center (fc)	
49	
27	
17	
12	
9	
WATTS: 7 LPW: 96.9	
LUMENS: 678 CCT: 3000K	
INTENSITY	
DEGREE	CANDELA
0	1747
5	1627
15	939
25	375
35	88
45	25

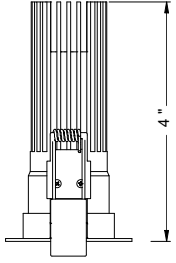
40D 43° WITH NO LENS	
Throw Distance (ft)	Beam Diameter (ft)
6	4.7
8	6.3
10	7.8
12	9.4
14	10.9
Illuminance at Center (fc)	
33	
19	
12	
8	
6	
WATTS: 7 LPW: 96.5	
LUMENS: 676 CCT: 3000K	
INTENSITY	
DEGREE	CANDELA
0	1186
5	1155
15	886
25	423
35	111
45	37

60D 57° WITH NO LENS	
Throw Distance (ft)	Beam Diameter (ft)
6	6.5
8	8.7
10	10.8
12	13
14	15.2
Illuminance at Center (fc)	
21	
12	
8	
5	
4	
WATTS: 7 LPW: 103.8	
LUMENS: 727 CCT: 3000K	
INTENSITY	
DEGREE	CANDELA
0	755
5	742
15	637
25	452
35	249
45	94

PROJECT INFORMATION		
JOB NAME	TYPE	
ORDERING CODE		

MOUNTING OPTIONS

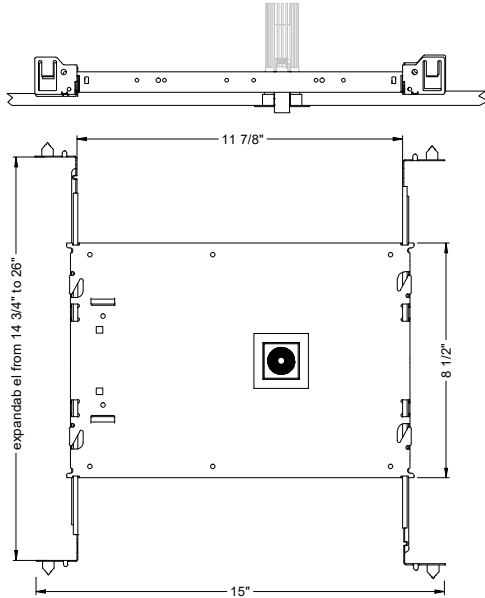
FIXTURE HEIGHT 07LM LOW LUMENS



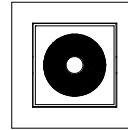
TRIMMED, TRIMLESS & MILLWORK

NC - NEW CONSTRUCTION

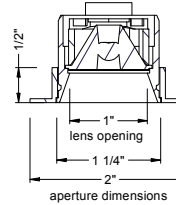
TRIM



TRIM

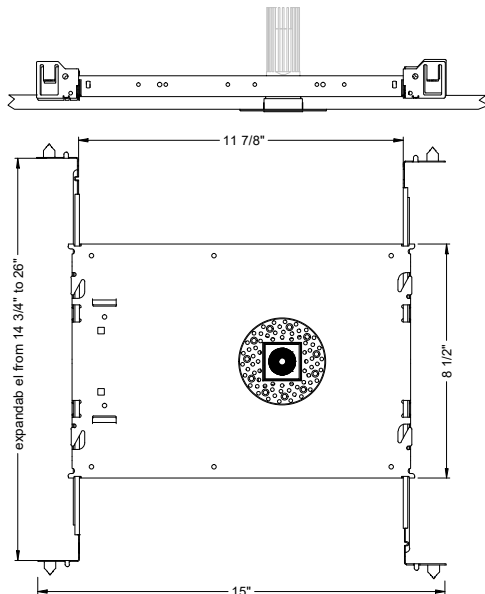


ceiling cutout
1-3/4" square
ceiling thickness
1/8" to 1 1/2"

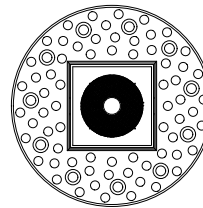


ADDITIONAL MOUNTING INFO	
New Construction Bar Hangers (included)	Mounting Length: 14-3/4" to 26"
Extension Kit p/n: K20266 (ordered separately, 1 per fixture)	Extends a pair of Bar Hangers Total Mounting Length: 29" to 48"

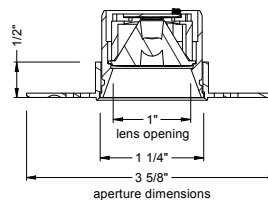
TRIMLESS



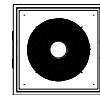
TRIMLESS



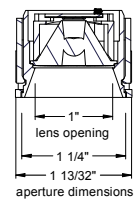
ceiling cutout
1-3/4" square
ceiling thickness
1/8" to 1 1/2"



TRIMLESS/MILLWORK



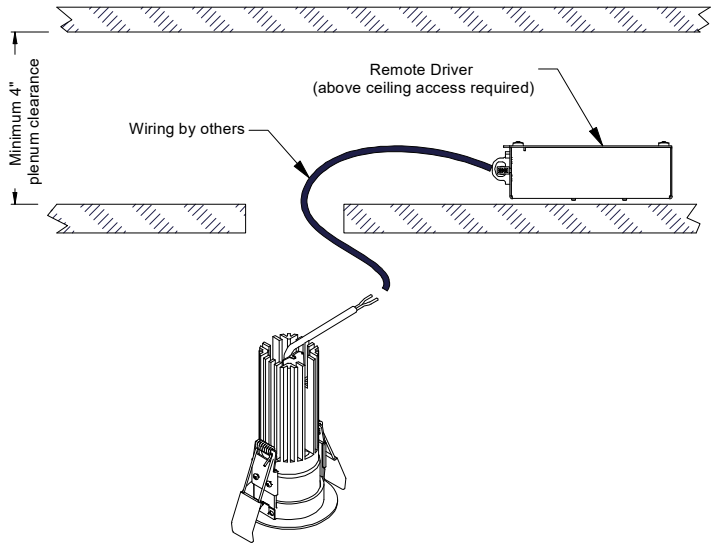
ceiling cutout
1-7/16" square
ceiling thickness
1/8" to 1 1/2"



PROJECT INFORMATION		
JOB NAME		TYPE
ORDERING CODE		

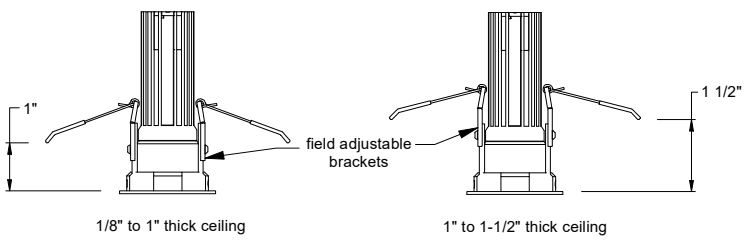
MOUNTING OPTIONS

RET - RETRO TRIM/TRIMLESS

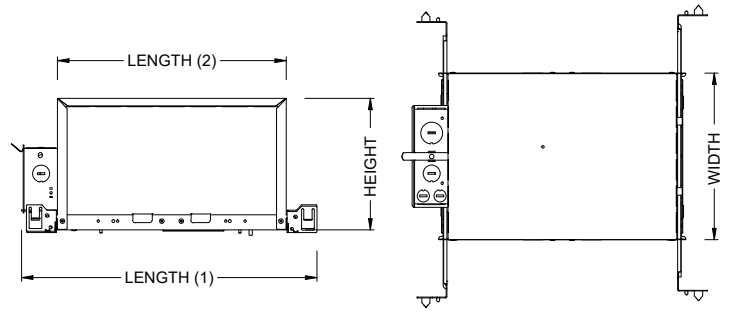


RATINGS / CERTIFICATIONS	NC	RET	IC	ICAT	CP
TYPE NON-IC	✓	✓			
TYPE IC			✓	✓	✓
CHICAGO PLENUM (CCEA)					✓
SUITABLE FOR AIR HANDLING PLENUMS				✓	✓
REDUCED AIRFLOW ASTM E283				✓	✓

FIXTURE TYPE	CEILING THICKNESS		
	MOUNTING TYPE		
	NC, IC, ICAT, CP, RET	NC, IC, ICAT, CP, RET	NC, IC, ICAT, CP, RET
	STANDARD CEILING THICKNESS	THICK CEILING THICKNESS	CEILING CUTOUT
TRIM	1/8" to 1.0"	1.0" to 1 1/2"	1-3/4" square
TRIMLESS	1/8" to 1.0"	1.0" to 1 1/2"	1-3/4" square
MILLWORK (TRIMLESS)	1/8" to 1.0"	1.0" to 1 1/2"	1-7/16" square



IC - INSULATION CONTACT HOUSING ICAT - INSULATION CONTACT / AIR TIGHT CP - CHICAGO PLENUM



BOX SIZE	L1	L2	W	H
A	15 - 7/16"	11 - 3/4"	8 - 1/2"	6 - 3/4"

BOX TYPE / LUMEN OUTPUT - STANDARD BEAMS (12°-60°)			
LUMEN OUTPUT	BOX - A		
	CP	IC	ICAT
07LM	✓	✓	✓