

alphabet

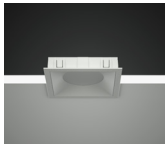
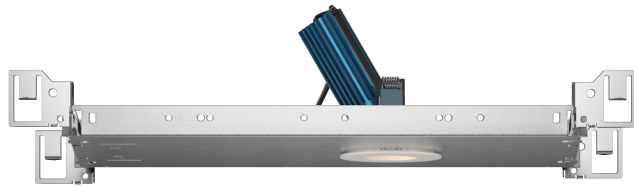
PROJECT INFORMATION		
JOB NAME		TYPE
ORDERING CODE		

NU1

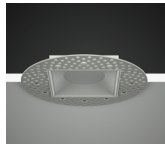
1" Square Adjustable Warm Dim



30° - 55° BEAM			
(Note: Specifications are subject to change without notice)			
6mm COB PERFORMANCE DATA			
LED LIGHT ENGINE	NOMINAL DELIVERED LUMENS	DRIVE CURRENT	LED WATTAGE
05LM	470LM @30K/97CRI	175mA	6.5W
07LM	730LM @30K/97CRI	275mA	10W
Notes	Delivered lumens based on 55D optic with no lens, (see page 2)		



Trim



Trimless



Trimless Millwork

FEATURES

- True 30° Tilt with <6% beam disruption (clipping)
- Zero ceiling line obstruction at Full Tilt
- Concentric Tilt Tracking ensures minimal light loss
- 30° - 55° optical beam control
- UGR < 19
- Glare control, specialty optics, trim options, and custom finishes available
- Microban® antimicrobial finish available on all exposed painted surfaces

LED

- Luminus Dim-to-warm COB:
- 97 CRI: SDCM = 3-step MacAdam Ellipse, Lumen Maintenance: L₇₀ > 54,000 hrs

DIMMING AND CONTROLS

- eidoLED flicker free 0-10V dimming to 0% and 1%
- eidoLED flicker free DALI dimming to 0% and 1%
- Lutron Hi-Lume Eco System dimming to 0.1% and 1%
- Leading & trailing edge (Triac/ELV) dimming to 1%
- All driver offerings are remote with above ceiling access, see page 3 for details.
- Refer to DX remote panels for additional options.

LISTING

- ULus Listed to UL1598 & UL2108; cUL Listed to CSA C22.2 #250.0
- IP44 with lens - Suitable for wet locations with lens - Suitable for damp locations without lens
- NSF/ANSI-2 with lens (Non-Food and Splash Zones)
- **Declare.** - LBC Red List Approved
- 5 Year Limited warranty

CONSTRUCTION

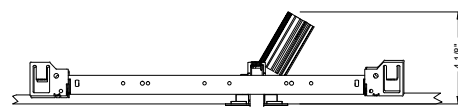
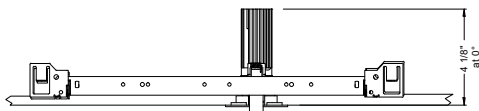
- High-grade die-cast and cold forged aluminum alloy assembly that has superior thermal and corrosion resistance properties.
- Shatter proof acrylic bezel lens
- Electrocoated 16-gauge cold-rolled steel construction
- Accommodates ceiling thickness from 1/8" to 1-1/2", On-field thick ceiling adjustment, see page 8

ELECTRICAL

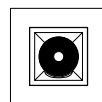
- Low voltage luminaire: 36Vdc nominal
- 05LM - 175mA
- 07LM - 275mA

FIXTURE HEIGHT

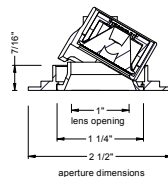
LED LIGHT ENGINE: 05LM - 07LM



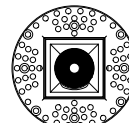
TRIMMED



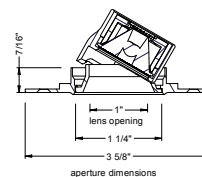
ceiling cutout
2-1/8" square
ceiling thickness
1/8" to 1-1/2"



TRIMLESS



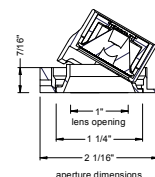
ceiling cutout
2-1/8" square
ceiling thickness
1/8" to 1-1/2"



MILLWORK



ceiling cutout
2-1/8" square
ceiling thickness
1/8" to 1-1/2"



alphabet

PROJECT INFORMATION		
JOB NAME		TYPE
ORDERING CODE		

ORDERING CODE					
SERIES	NU1	NU1			
TYPE	QA	square adjustable			
	QAT	square adjustable trimless			
	QATMW	square adjustable trimless millwork			
LED	WD	warm dim (Luminus)			
DELIVERED LUMENS	05LM	470 lm			
	07LM	730 lm			
Standard Configuration: 3000K 97CRI 55D, NL Calculated Delivered Lumens = [Delivered Lumen Value] x [Optic Multiplier] x [Lens Multiplier]					
CCT	3018	3000K, dim to 1800K	CCT at Light Level (%LF)		
			%LF	07LM	05LM
			100%	3000	3000
			50%	3000	3000
			25%	2800	2800
			10%	2200	2200
5%	1800	1800			
CRI	97	97 CRI			
OPTIC & LM MULTIPLIER SEE PAGE 6	30D¹	30 degrees	(0.84)		
	40D	40 degrees	(0.84)		
	55D	55 degrees	(1.00)		
	45D	45 degrees	(0.86)		
TIR OPTIC ACCESSORY SEE PAGE 5	NA	no accessory	(1.00)		
	HCL	honeycomb louver	(0.61)		
	HETA	high efficiency textured lens, similar to Solite™	(0.88)		
	EA²	elliptical lens	(0.76)		
	Maximum 2pcs of media per fixture.				
BEZEL LENS SEE PAGE 5	NL³	no lens	(1.00)		
	CL	clear lens	(0.78)		
	DL	diffused lens	(0.76)		
	HET	high efficiency textured lens, similar to Solite™	(0.78)		
	SBL	smoothing beam lens	(0.78)		
	Not applicable to trimless option. Do not include in trimless ordering code.				
TRIM COLOR SEE PAGE 5	BK	black			
	WH	white			
	MC	matte chrome			
	BZ	bronze			
	WT	wheat			
	CC⁴	custom color, consult factory for details			
	Antimicrobial finish, add AM to black, white or matte chrome i.e. BKAM.				
BEZEL COLOR SEE PAGE 5	BK	black	(0.98)		
	WH	white	(1.00)		
	MC	matte chrome	(0.99)		
	BZ	bronze	(0.98)		
	WT	wheat	(0.99)		
	CC⁴	custom color, consult factory for details			
Antimicrobial finish, add AM to black, white or matte chrome i.e. BKAM.					

ORDERING CODE		
MOUNTING OPTIONS SEE PAGE 7, 8	NC	new construction with ceiling fitting plate
	NCINH⁵	new construction with ceiling fitting plate, IC rated, inherently protected
	IC⁶	insulation contact housing
	ICAT⁶	insulation contact/airtight housing
	CP⁶	chicago plenum housing
	RET	retrofit, no ceiling fitting plate
	RETINH⁵	retrofit, no ceiling fitting plate, IC rated, inherently protected
remote driver only		
VOLTAGE	LVL	low voltage luminaire
DIMMING	ND	No driver included. See page 3 for remote driver options.

YOUR COMPLETED ORDERING CODE	
Follow the steps to specify your fixture, example:	
NU1 - QA - WD - 07LM - 3018 - 97 - 30D - NA - HET - WH - WH - NC - LVL - ND	

NOTES

- 30D available with HETA, EA, DL, HET lens option.
- Elliptical beam distributions [30D= 40° x 60°, 40D= 45° x 65°, 45D= 50° x 65°, 55D= 55° x 70°]
- NL option does not meet requirements for AT/WET/NSF listings. Bezel lensing cannot be added in the field.
- Custom set up fee plus minimum quantity required per color.
- NCINH, RETINH available in 05LM.
- IC/ICAT/CP not available in 07LM.

* EidoLED uses logarithmic dimming curve as standard. For linear dimming curve, add "LIN" after dimming code, i.e. DIM10LIN.

alphabet

PROJECT INFORMATION		
JOB NAME		TYPE
ORDERING CODE		

REMOTE DRIVER - ORDERING CODE		
SERIES	DX-C	compact driver box
NUMBER OF DRIVERS	1-5	number of drivers, 1-5
CURRENT	175	175mA
	275	275mA
VOLTAGE	120	120V
	UNV	120V-277V
DIMMING	DIM10	eldoLED flicker free 0-10V dimming to 1%
	DIM10Z	eldoLED flicker free 0-10V dimming to 0%
	DALI	eldoLED flicker free DALI-2 dimming to 1%
	DALIZ	eldoLED flicker free DALI-2 dimming to 0%
	DMX-RJ45¹	DMX control dimming to 0.1% with RJ45 connection
	DMX-WL¹	DMX control dimming to 0.1% with wire lead connection
	DMX-XLR¹	DMX control dimming to 0.1% with XLR 5pin connection
	LUT	Lutron Hi-lume Ecosystem dimming to 1%, Soft-on & Fade-to-Black
	LUTP	Lutron Hi-lume Premier Ecosystem dimming to 0.1%, Soft-on & Fade-to-Black
	ELV²	leading & trailing edge (Triac/ELV) dimming to 1%
NLT	nLight control interface: standard Cat-5/RJ45 connection (female), dim to off	
CAS³	Casambi control with flicker free 1% dimming	
AWN⁴	lutron athena wireless node	
ELECTRICAL OPTIONS	EM7⁵	remote emergency battery backup, 90 minutes at 7 watts to LED, Remote TS

30° - 55° BEAM		
(Note: Specifications are subject to change without notice)		
6mm COB PERFORMANCE DATA		
LED LIGHT ENGINE	NOMINAL DELIVERED LUMENS	SYSTEM WATTAGE
05LM	470LM @30K/97CRI	8W
07LM	730LM @30K/97CRI	12W
Notes	Delivered lumens based on 55D optic with no lens, (see page 2)	

ELECTRICAL/CONTROLS

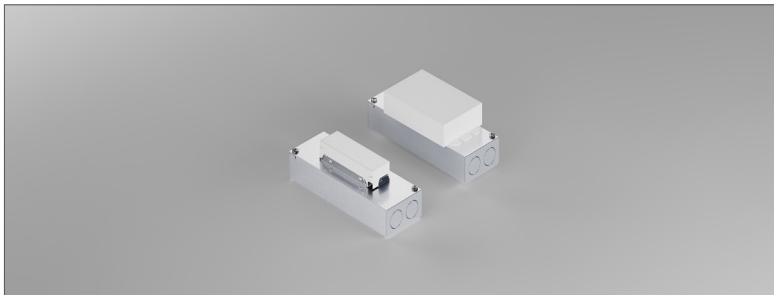
- 120V-277V, 120 only Triac / ELV
- Power factor ≥ 0.9
- 2kV driver input surge protection
- Remote emergency test switch
- 7W, 10W (T20 CEC) and 12W EM 90min battery
- Max. ambient installation temperature 95°F (35°C)
- Minimum wire gauge approved mounting distance 18 AWG, 330 feet
- Maximum Remote mounting distance of EM driver shall be 50 feet

YOUR COMPLETED ORDERING CODE
Follow the steps to specify your fixture, example:
DX-C - 1 - 275 - UNV - DIM10 - EM7

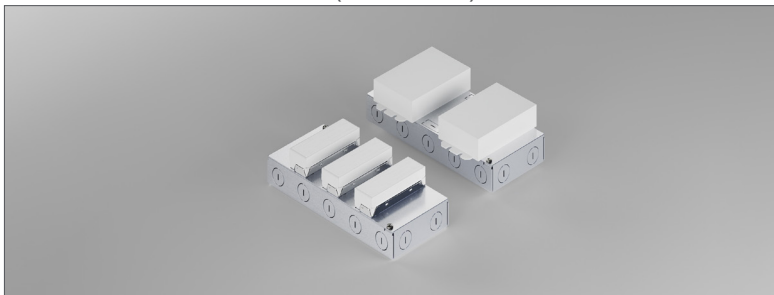
NOTES

1. DMX available only in DX-C-1.
 2. ELV available in 120V.
 3. All drivers on single Casambi dimming circuit.
 4. AWNR reference page 10. for product specification on Athena wireless node.
 5. EM available only with DX-C-1. Box size same as DX-C-2, with one driver and one battery.
- * EldoLED uses logarithmic dimming curve as standard. For linear dimming curve, add "LIN" after dimming code, i.e. DIM10LIN.

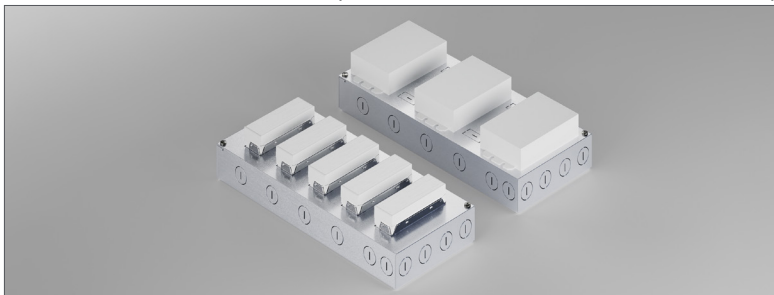
REMOTE SINGLE DRIVER BOX



REMOTE 2 TO 3 DRIVER BOX (2 Drivers for DIM10Z/DALI/DALIZ/LUT/LUTP) (1 Driver + EM)



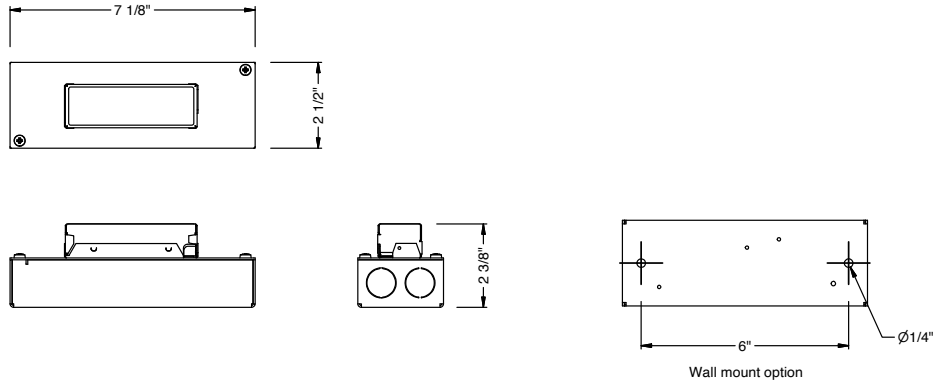
REMOTE 4 TO 5 DRIVER BOX (3 Drivers for DIM10Z/DALI/DALIZ/LUT/LUTP)



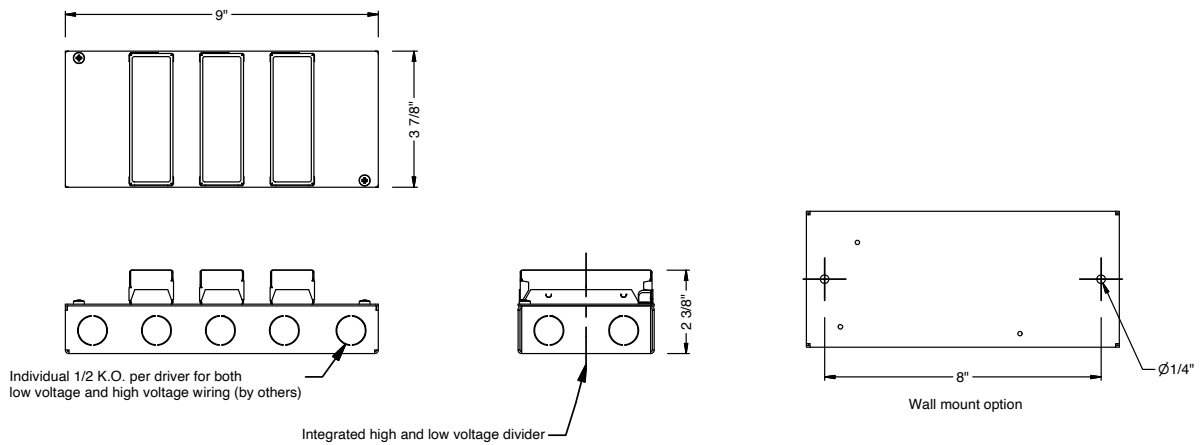
PROJECT INFORMATION		
JOB NAME		TYPE
ORDERING CODE		

DRIVER BOXES

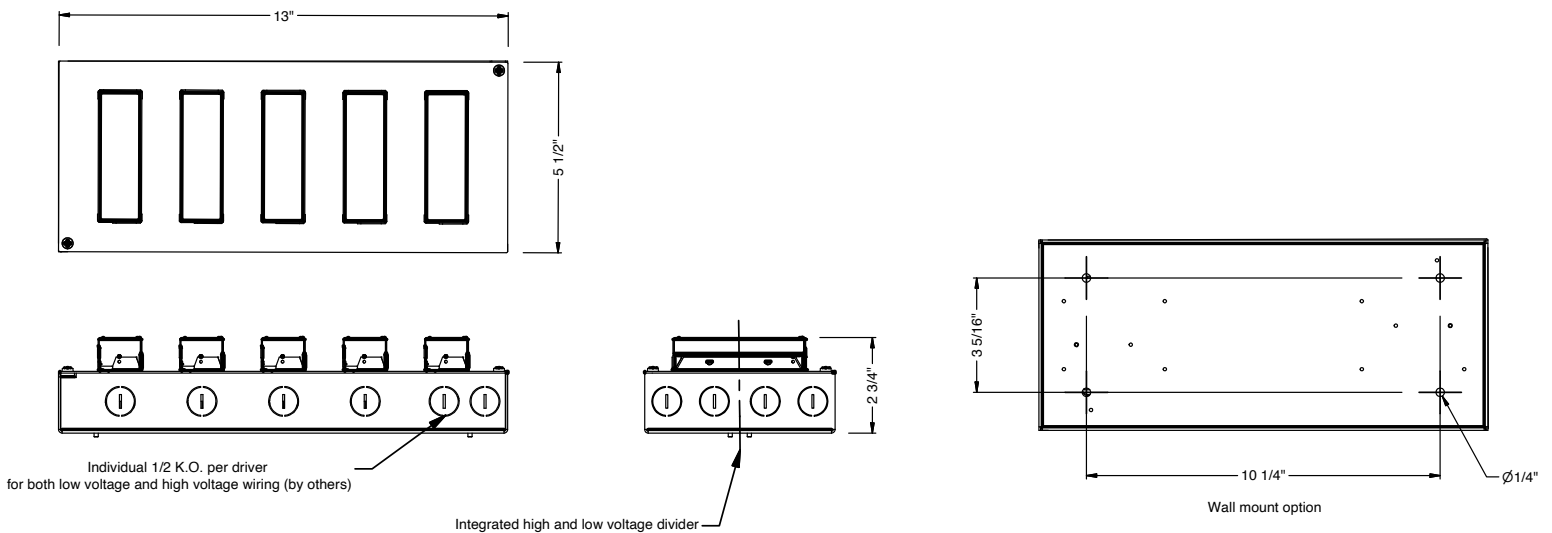
REMOTE SINGLE DRIVER BOX



REMOTE 2 TO 3 DRIVER BOX (2 Drivers for DIM10Z/DALI/DALIZ/LUT/LUTP)



REMOTE 4 TO 5 DRIVER BOX (3 Drivers for DIM10Z/DALI/DALIZ/LUT/LUTP)



alphabet

PROJECT INFORMATION		
JOB NAME		TYPE
ORDERING CODE		

TRIM OPTIONS

TRIM/BEZEL COLORS



OPTICAL OPTIONS

- UGR calculation based on CIE 117-1995; room size: 4H X 8H, reflectance: 70/50/20;
- UGR calculation based on 05LM WH fixtures, unless otherwise noted.

HCL

Honeycomb Louver



OPTIC	BEAM ANGLE	UGR
40D	33	14.8
45D	40	15.3
55D	43	19.1

NL

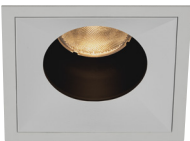
No Lens



OPTIC	BEAM ANGLE	UGR
40D	39	20
45D	46	20.4
55D	53	23.8

CL

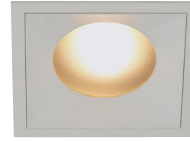
Clear Lens



OPTIC	BEAM ANGLE	UGR
40D	35	18.5
45D	42	19.1
55D	47	23

DL

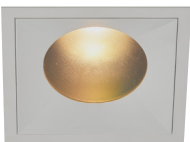
Diffused Lens



OPTIC	BEAM ANGLE	UGR
30D	40	22.3
40D	45	22.8
45D	49	23.7
55D	56	26.6

HET

High Efficiency Textured Lens



OPTIC	BEAM ANGLE	UGR
30D	30	18.9
40D	40	20
45D	45	20.6
55D	52	23.7

SBL

Smoothing Beam Lens



OPTIC	BEAM ANGLE	UGR
30D	26	17.9
40D	35	18.6
45D	42	19.3
55D	47	23.1

EA

Elliptical Lens



OPTIC	BEAM ANGLE	UGR
30D	43x59	21x24
40D	48x64	22x25
45D	50x64	23x25
55D	57x70	24x27

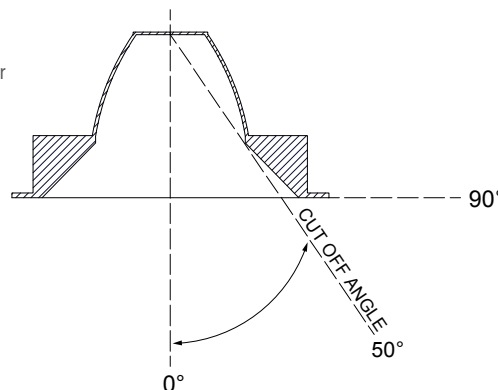
GLARE CONTROL

CUT-OFF ANGLE

Visual comfort is achieved with a lower cut-off angle due to improved glare control. The smaller the cut-off angle, the easier it is on the eye.

Alphabet downlights have been thoughtfully engineered to eliminate glare while still delivering functional illumination.

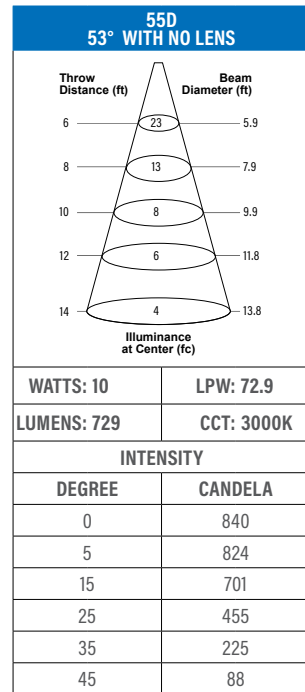
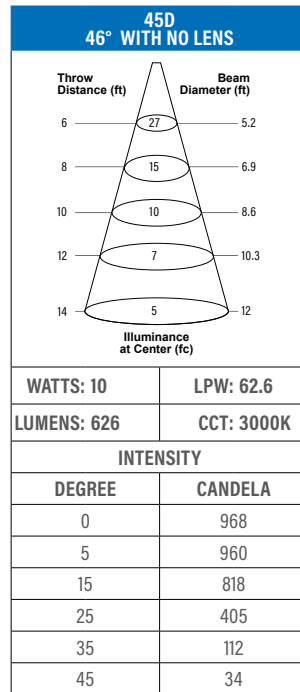
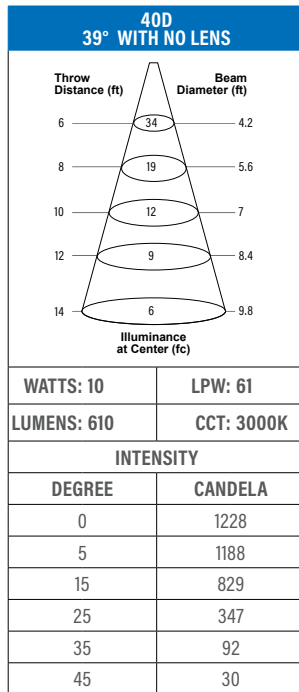
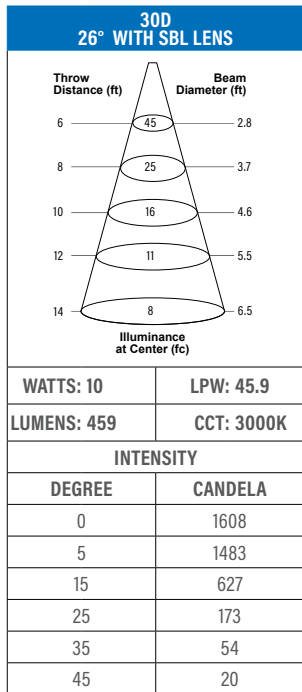
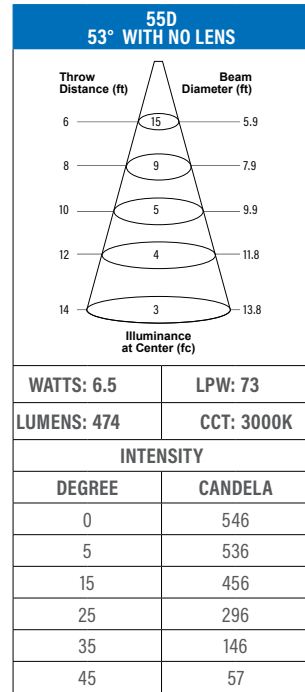
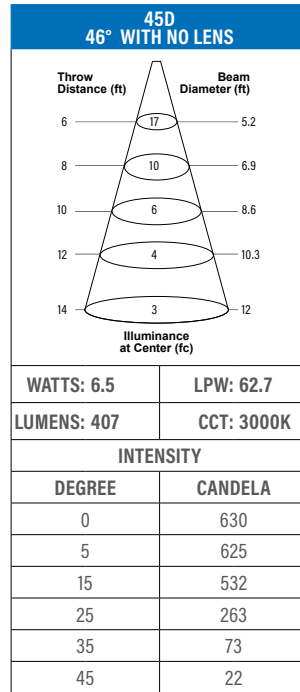
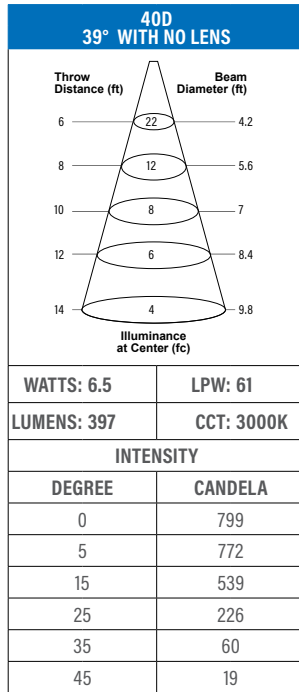
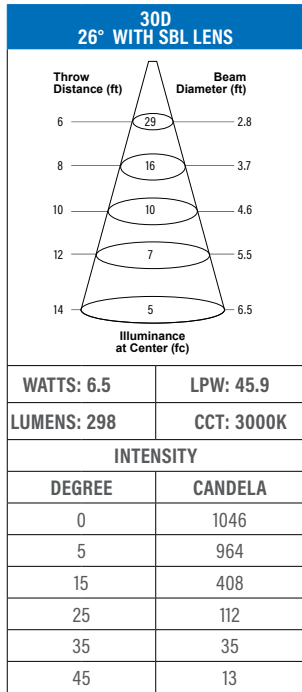
- Cutoff angle of NL and CL is 50 degrees;



alphabet

PROJECT INFORMATION		
JOB NAME		TYPE
ORDERING CODE		

PHOTOMETRIC DATA

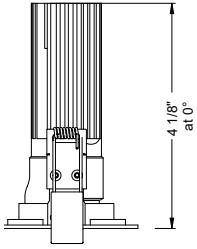


PROJECT INFORMATION		
JOB NAME		TYPE
ORDERING CODE		

MOUNTING OPTIONS

FIXTURE HEIGHT

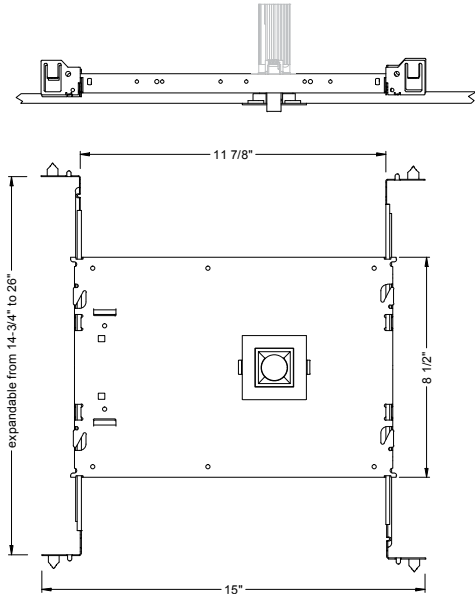
05LM - 07LM LOW LUMENS



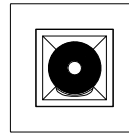
TRIMMED, TRIMLESS & MILLWORK

NC - NEW CONSTRUCTION

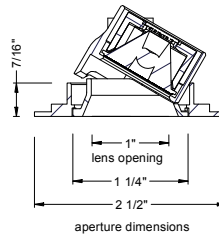
TRIM



TRIM

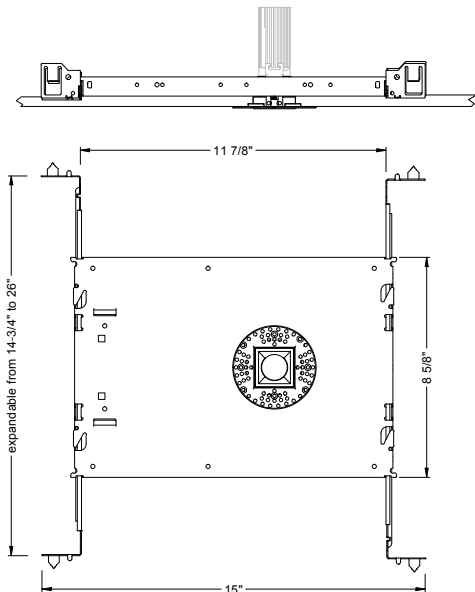


ceiling cutout
2-1/8" square
ceiling thickness
1/8" to 1-1/2"

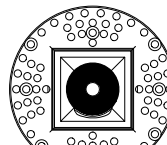


ADDITIONAL MOUNTING INFO	
New Construction Bar Hangers (included)	Mounting Length: 14-3/4" to 26"
Extension Kit p/n: K20266 (ordered separately, 1 per fixture)	<i>Extends a pair of Bar Hangers</i> Total Mounting Length: 29" to 48"

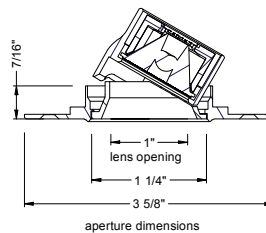
TRIMLESS



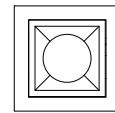
TRIMLESS



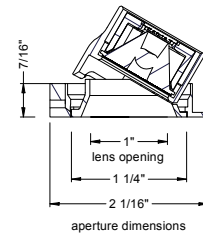
ceiling cutout
2-1/8" square
ceiling thickness
1/8" to 1-1/2"



TRIMLESS/MILLWORK



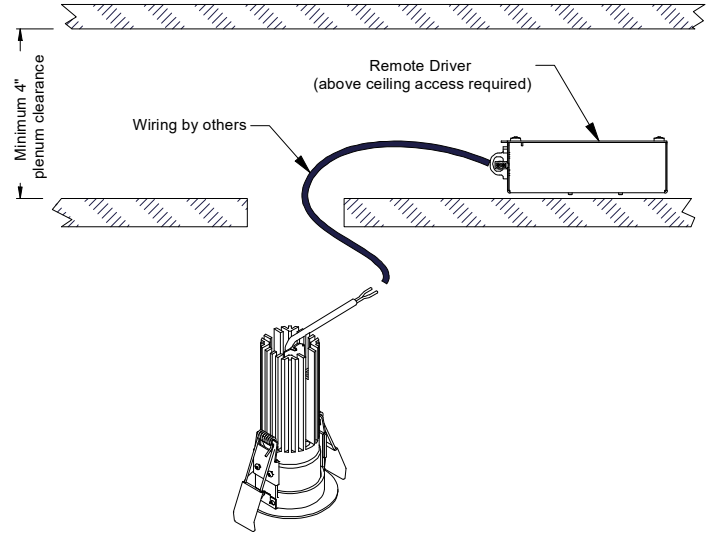
ceiling cutout
2-1/8" square
ceiling thickness
1/8" to 1-1/2"



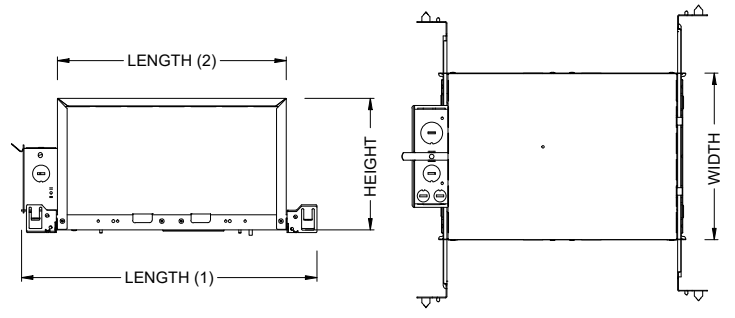
PROJECT INFORMATION		
JOB NAME	TYPE	
ORDERING CODE		

MOUNTING OPTIONS

RET - RETRO TRIM/TRIMLESS



IC - INSULATION CONTACT HOUSING ICAT - INSULATION CONTACT / AIR TIGHT CP - CHICAGO PLENUM

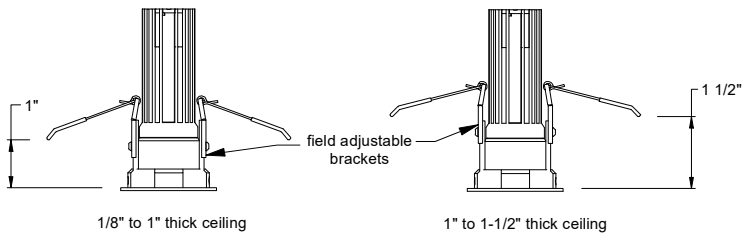


BOX SIZE	L1	L2	W	H
A	15 - 7/16"	11 - 3/4"	8 - 1/2"	6 - 3/4"

RATINGS / CERTIFICATIONS	NC	RET	IC	ICAT	CP
TYPE NON-IC	✓	✓			
TYPE IC			✓	✓	✓
CHICAGO PLENUM (CCEA)					✓
SUITABLE FOR AIR HANDLING PLENUMS				✓	✓
REDUCED AIRFLOW ASTM E283				✓	✓

BOX TYPE / LUMEN OUTPUT - STANDARD BEAMS (14°-60°)			
LUMEN OUTPUT	BOX - A		
	CP	IC	ICAT
05LM	✓	✓	✓
07LM			

FIXTURE TYPE	MOUNTING TYPE		
	NC, IC, ICAT, CP, RET	NC, IC, ICAT, CP, RET	NC, IC, ICAT, CP, RET
	STANDARD CEILING THICKNESS	THICK CEILING THICKNESS	CEILING CUTOUT
TRIM	1/8" to 1.0"	1.0" to 1 1/2"	2-1/8" square
TRIMLESS	1/8" to 1.0"	1.0" to 1 1/2"	2-1/8" square
MILLWORK (TRIMLESS)	1/8" to 1.0"	1.0" to 1 1/2"	2-1/8" square



FIXTURE TILT INFO	
TILT	CEILING THICKNESS
0° TO 30°	1/8" to 1.0"
0° TO 20°	1.0" to 1 1/2"

PROJECT INFORMATION		
JOB NAME		TYPE
ORDERING CODE		

BATTERY OPTIONS

EMERGENCY BATTERY

IOTA's ILB Battery Backups are UL Listed LED emergency drivers that allow the same LED fixture to be used for both normal and emergency operation. In the event of a power failure, the ILB switches to the emergency mode and operates the existing fixture for 90 minutes. The unit contains a battery, charger, and converter circuit in a single can. The Constant Power design of the ILB maintains the output wattage to the LED array even as the system voltage diminishes. UL 924 Listed for U.S. and Canada. UL 1310 Certified, Output Class 2 Compliant. Includes single-piece TBTS test switch and charge indicator accessory kit. For use with switched and unswitched fixtures, and includes Two-wire universal AC input. Meets or exceeds all National Electric Code and Life Safety Code Emergency Lighting Requirements. Rated for use in Plenum, Damp Location, Recessed Type IC, and Enclosed and Gasketed Luminaires.

REMOTE TEST SWITCH

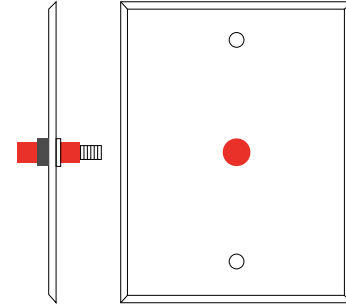
The Remote Test Switch may be mounted adjacent to the LED Fixture by others.

EMERGENCY BATTERY ACCESS

Above ceiling access is recommended for ease of service, but LED Fixture Sizes of 4" and Larger are capable of below ceiling access. IC/ICAT/CP Box and ITS option require an access panel in the ceiling (or other form of access) adjacent to the installation location of the Emergency Battery.

REMOTE LOCATION

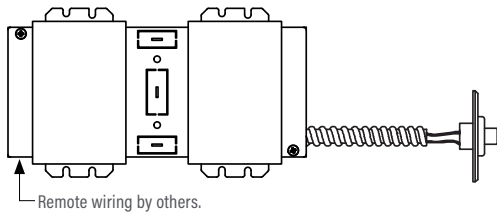
Maximum remote mounting distance of the emergency driver shall be 50 feet. Remote location wiring provided by others. Follow all Local and National Electric/ Building Codes.



Remote Test Switch

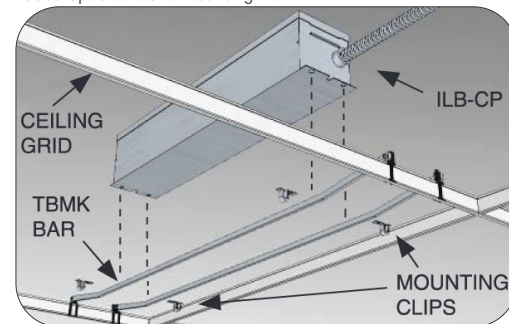
EM MODE OUTPUT (DELIVERED LUMENS)	
LUMEN ORDERING CODE	EM7
ALL OPTIONS (05LM TO 07LM)	450
Notes: Based on 30K, 97CRI	

REMOTE EM BATTERY (REMOTE TEST SWITCH)



Accessory

76066 Optional T-Grid Mounting Kit¹



1. Can be used with any of the Emergency Battery Backups. Must be ordered as a separate line item.

PROJECT INFORMATION		
JOB NAME	TYPE	
ORDERING CODE		

AWNRR OPTIONS

Athena Wireless Node

The Athena wireless node is a radio frequency (RF) device that enables simple, digital control of individual light fixtures in an Athena control system.



Athena Wireless Node RF



AWNRR

Plenum rated and can be installed above the ceiling for wireless control of a fixture without any impact on fixture aesthetics.

FEATURES

- Enables individual, wireless control of each fixture in an Athena control system. Accommodates zone and control changes without rewiring.
- Installed at factory – no wiring required on-site. Fixture is ready to communicate wirelessly once power is connected.
- All drivers on the link are controlled as a single zone.

REGULATORY APPROVALS

- cULus Listed (UL916)
- Complies with requirements for use in other spaces used for environmental air (plenums) per NEC® 2014 300.22(C)(3).
- FCC compliant with the limits for a Class B digital device.
- IC (Industry Canada)
- ANSI C137.1 0–10 V- Electronic Off

POWER / LOAD

- IEC SELV/NEC® Class 2
- 1 Watt

ENVIRONMENTAL

- Ambient operating temperature (immediate vicinity of Athena wireless node): **32 °F to 131 °F** (0 °C to 55 °C), 0% to 90% humidity.

BATTERY OPTIONS

- For EM options please consult factory.

Note: Default behavior prior to programming

- Light level 100%
- Athena wireless node performs an unprogrammed startup sequence on every power up until the device is added to an Athena system.

- Each Athena wireless node should be installed within 25 ft (7.62 m) of two or more Athena wireless nodes or other Clear Connect – Type X devices.
- For Chicago plenum installations, the Athena wireless node may not be installed in the plenum space. It must be installed in the occupied space.

For servicing the driver/j-box, access above ceiling is required. (NC Mounting)

IC/ICAT/CP not available in AWNR.