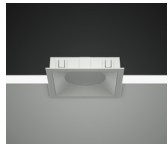
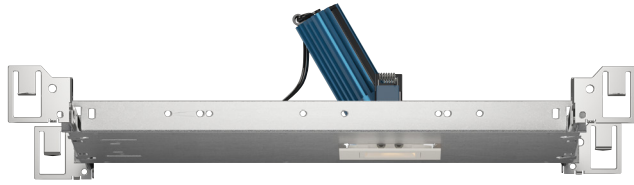


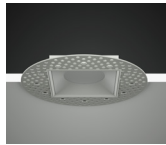
PROJECT INFORMATION		
JOB NAME		TYPE
ORDERING CODE		

NU1

1" Square Adjustable Hospitality CCTs



Trim



Trimless



Trimless Millwork

22° - 55° BEAM			
(Note: Specifications are subject to change without notice)			
6mm COB PERFORMANCE DATA			
LED LIGHT ENGINE	NOMINAL DELIVERED LUMENS	DRIVE CURRENT	LED WATTAGE
05LM	490LM @24K/90CRI	150mA	5.5W
07LM	650LM @24K/90CRI	200mA	7.5W
10LM	870LM @24K/90CRI	300mA	11W
Notes	Delivered lumens based on 55D optic with no lens, (see page 2)		

17° BEAM			
(Note: Specifications are subject to change without notice)			
4mm COB PERFORMANCE DATA			
LED LIGHT ENGINE	NOMINAL DELIVERED LUMENS	DRIVE CURRENT	LED WATTAGE
05LM	420LM @24K/90CRI	150mA	5.5W
Notes	Delivered lumens based on 17D optic with SBL lens, (see page 2)		

FEATURES

- True 30° Tilt with <6% beam disruption (clipping)
- Zero ceiling line obstruction at Full Tilt
- Concentric Tilt Tracking ensures minimal light loss
- 17° - 55° optical beam control
- UGR < 19
- Glare control, specialty optics, trim options, and custom finishes available
- Microban® antimicrobial finish available on all exposed painted surfaces

DIMMING AND CONTROLS

- eLdoLED flicker free 0-10V dimming to 0% and 1%
- eLdoLED flicker free DALI dimming to 0% and 1%
- Lutron Hi-lume Eco System dimming to 0.1% and 1%
- Leading & trailing edge (Triac/ELV) dimming to 1%
- All driver offerings are remote with above ceiling access, see page 3 for details.
- Refer to DX remote panels for additional options.

CONSTRUCTION

- High-grade die-cast and cold forged aluminum alloy assembly that has superior thermal and corrosion resistance properties.
- Shatter proof acrylic bezel lens
- Electrocoated 16-gauge cold-rolled steel construction
- Accommodates ceiling thickness from 1/8" to 1-1/2", On-field thick ceiling adjustment, see page 9

LED

- 90 CRI: SDCM = 2-step MacAdam Ellipse, Lumen Maintenance: L₇₀ > 66,000 hrs

LISTING

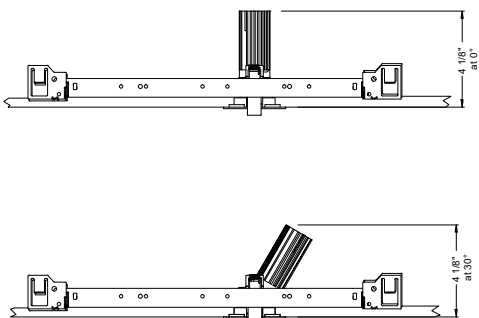
- ULus Listed to UL1598 & UL2108; cUL Listed to CSA C22.2 #250.0
- IP44 with lens - Suitable for wet locations with lens - Suitable for damp locations without lens
- NSF/ANSI-2 with lens (Non-Food and Splash Zones)
- **Declare.** - LBC Red List Approved
- 5 Year Limited warranty

ELECTRICAL

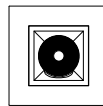
- Low voltage luminaire: 36Vdc nominal
- 07LM - 150mA
- 10LM - 200mA
- 13LM - 300mA

FIXTURE HEIGHT

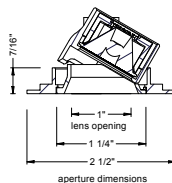
LED LIGHT ENGINE: 05LM-10LM



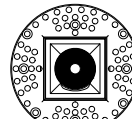
TRIMMED



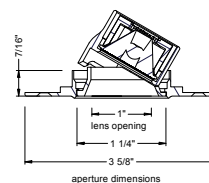
ceiling cutout
2-1/8" square
ceiling thickness
1/8" to 1-1/2"



TRIMLESS



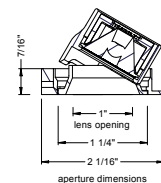
ceiling cutout
2-1/8" square
ceiling thickness
1/8" to 1-1/2"



MILLWORK



ceiling cutout
2-1/8" square
ceiling thickness
1/8" to 1-1/2"



alphabet

PROJECT INFORMATION		
JOB NAME		TYPE
ORDERING CODE		

		ORDERING CODE			
SERIES	NU1	NU1			
TYPE	QA	square adjustable			
	QAT	square adjustable trimless			
	QATMW	square adjustable trimless millwork			
LED	SW	standard white			
DELIVERED LUMENS	05LM	490 lm			
	07LM	650 lm			
	10LM	870 lm			
Standard Configuration: 2400K 90CRI 55D, NL Calculated Delivered Lumens = [Delivered Lumen Value] x [CCT Multiplier] x [Optic Multiplier] x [Lens Multiplier]					
CCT	22K	2200K	CCT	2200K	2400K
		2400K	CRI	90+	90+
	24K	2400K	CCT MULTIPLIER FOR LUMEN OUTPUT	0.92	1
CRI	90	90 CRI			
OPTIC & LM MULTIPLIER SEE PAGE 6	17D^{1,2,3}	17 degrees	(0.80)		
	22D^{2,3}	22 degrees	(0.95)		
	30D	30 degrees	(0.93)		
	40D	40 degrees	(0.92)		
	55D	55 degrees	(1.00)		
TIR OPTIC ACCESSORY SEE PAGE 5	NA	no accessory	(1.00)		
	HCL	honeycomb louver	(0.67)		
	HETA	high efficiency textured lens, similar to Solite™	(0.90)		
	EA⁴	elliptical lens	(0.78)		
Maximum 2pcs of media per fixture.					
BEZEL LENS SEE PAGE 5	NL⁵	no lens	(1.00)		
	CL	clear lens	(0.92)		
	DL	diffused lens	(0.90)		
	HET	high efficiency textured lens, similar to Solite™	(0.91)		
	SBL	smoothing beam lens	(0.91)		
TRIM COLOR SEE PAGE 5	BK	black			
	WH	white			
	MC	matte chrome			
	BZ	bronze			
	WT	wheat			
	CC⁶	custom color, consult factory for details			
Antimicrobial finish, add AM to black, white or matte chrome i.e. BKAM.					
Not applicable to trimless option. Do not include in trimless ordering code.					
BEZEL COLOR SEE PAGE 5	BK	black	(0.98)		
	WH	white	(1.00)		
	MC	matte chrome	(0.99)		
	BZ	bronze	(0.98)		
	WT	wheat	(0.99)		
	CC⁶	custom color, consult factory for details			
Antimicrobial finish, add AM to black, white or matte chrome i.e. BKAM.					

		ORDERING CODE	
MOUNTING OPTIONS SEE PAGE 8, 9	NC	new construction with ceiling fitting plate	
	NCINH⁷	new construction with ceiling fitting plate, IC rated, inherently protected	
	IC⁸	insulation contact housing	
	ICAT⁸	insulation contact/airtight housing	
	CP⁸	chicago plenum housing	
	RET	retrofit, no ceiling fitting plate	
	RETINH⁷	retrofit, no ceiling fitting plate, IC rated, inherently protected	
	remote driver only		
VOLTAGE	LVL	low voltage luminaire	
DIMMING	ND	No driver included. See page 3 for remote driver options.	

YOUR COMPLETED ORDERING CODE	
Follow the steps to specify your fixture, example:	
NU1 - RA - SW - 10LM - 22K - 90 - 30D - HET - WH - WH - NC - LVL - ND	

NOTES

- 17D available in 05LM.
- 17D & 22D not available with NL and CL options.
- 17D & 22D includes SBL lens as standard. One additional media may be used.
- Elliptical lens not available with 17D optic options. Actual beam distributions [22D= 39° x 56°, 30D= 44° x 61°, 40D= 48° x 64°, 55D= 58° x 73°]
- NL option does not meet requirements for AT/WET/NSF listings. Bezel lensing cannot be added in the field.
- Custom set up fee plus minimum quantity required per color.
- NCINH, RETINH available in 05LM.
- IC/ICAT/CP not available in 10LM.

* EldoLED uses logarithmic dimming curve as standard. For linear dimming curve, add "LIN" after dimming code, i.e. DIMIOLIN.

alphabet

PROJECT INFORMATION		
JOB NAME		TYPE
ORDERING CODE		

REMOTE DRIVER - ORDERING CODE		
SERIES	DX-C	compact driver box
NUMBER OF DRIVERS	1-5	number of drivers, 1-5
CURRENT	150	150mA
	200	200mA
	300	300mA
VOLTAGE	UNV	120V-277V
	120	120V
DIMMING	DIM10	eldoLED flicker free 0-10V dimming to 1%
	DIM10Z	eldoLED flicker free 0-10V dimming to 0%
	DALI	eldoLED flicker free DALI-2 dimming to 1%
	DALIZ	eldoLED flicker free DALI-2 dimming to 0%
	DMX-RJ45¹	DMX control dimming to 0.1% with RJ45 connection
	DMX-WL¹	DMX control dimming to 0.1% with wire lead connection
	DMX-XLR¹	DMX control dimming to 0.1% with XLR 5pin connection
	LUT	Lutron Hi-lume Ecosystem dimming to 1%, Soft-on & Fade-to-Black
	LUTP	Lutron Hi-lume Premier Ecosystem dimming to 0.1%, Soft-on & Fade-to-Black
	ELV²	leading & trailing edge (Triac/ELV) dimming to 1%
NLT	nLight control interface: standard Cat-5/RJ45 connection (female), dim to off	
CAS³	Casambi control with flicker free 1% dimming	
AWNR⁴	lutron athena wireless node	
ELECTRICAL OPTIONS	EM7⁵	remote emergency battery backup, 90 minutes at 7 watts to LED, Remote TS

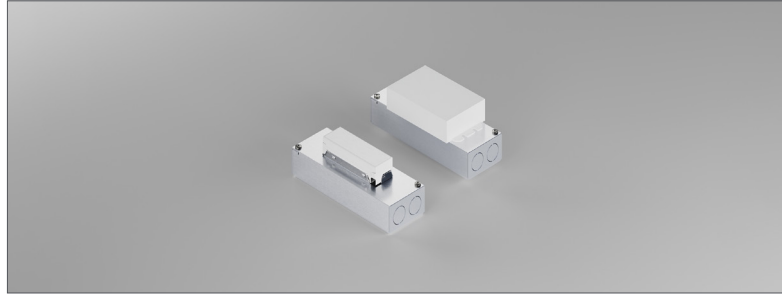
22° - 55° BEAM (Note: Specifications are subject to change without notice)		
6mm COB PERFORMANCE DATA		
LED LIGHT ENGINE	NOMINAL DELIVERED LUMENS	SYSTEM WATTAGE
05LM	490LM @24K/90CRI	7W
07LM	650LM @24K/90CRI	9W
10LM	870LM @24K/90CRI	14W
Notes	Delivered lumens based on 55D optic with no lens, (see page 2)	

17° BEAM (Note: Specifications are subject to change without notice)		
4mm COB PERFORMANCE DATA		
LED LIGHT ENGINE	NOMINAL DELIVERED LUMENS	SYSTEM WATTAGE
05LM	420LM @24K/90CRI	7W
Notes	Delivered lumens based on 17D optic with SBL lens, (see page 2)	

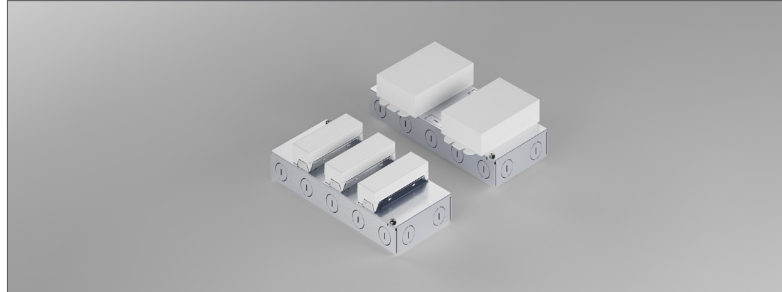
ELECTRICAL/CONTROLS

- 120V-277V, 120 only Triac / ELV
- Power factor ≥ 0.9
- 2kV driver input surge protection
- Remote emergency test switch
- 7W, 10W (T20 CEC) and 12W EM 90min battery
- Max. ambient installation temperature 95°F (35°C)
- Minimum wire gauge approved mounting distance 18 AWG, 330 feet
- Maximum Remote mounting distance of EM driver shall be 50 feet

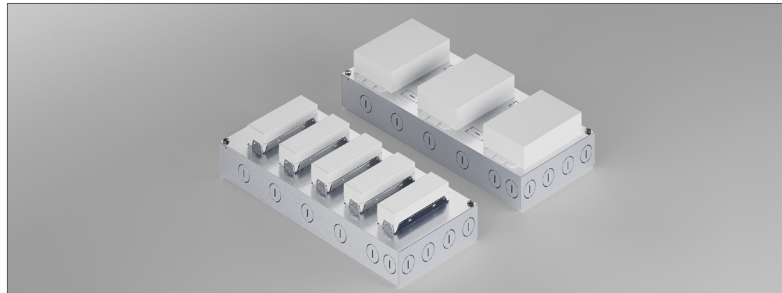
REMOTE SINGLE DRIVER BOX



REMOTE 2 TO 3 DRIVER BOX (2 Drivers for DIM10Z/DALI/DALIZ/LUT/LUTP) (1 Driver + EM)



REMOTE 4 TO 5 DRIVER BOX (3 Drivers for DIM10Z/DALI/DALIZ/LUT/LUTP)



YOUR COMPLETED ORDERING CODE	
Follow the steps to specify your fixture, example:	
DX-C - 1 - 300 - UNV - DIM10 - EM7	

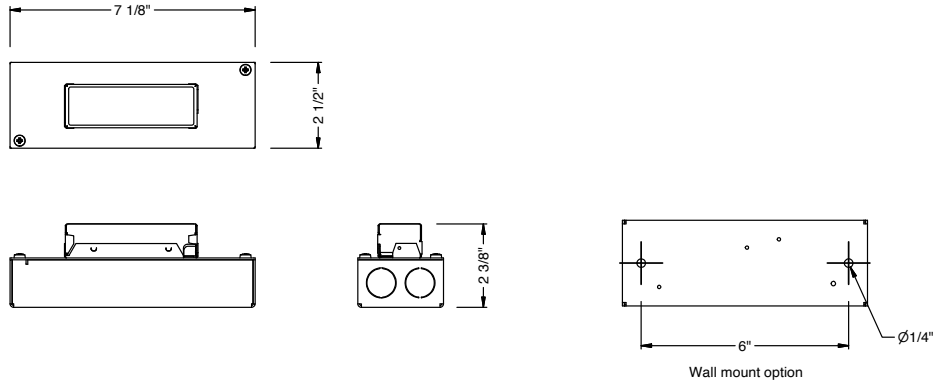
NOTES

1. DMX available only in DX-C-1.
 2. ELV available in 120V.
 3. All drivers on single Casambi dimming circuit.
 4. AWRN reference page 11 for product specification on Athena wireless node.
 5. EM available only with DX-C-1. Box size same as DX-C-2, with one driver and one battery.
- * EldoLED uses logarithmic dimming curve as standard. For linear dimming curve, add "LIN" after dimming code, i.e. DIM10LIN.

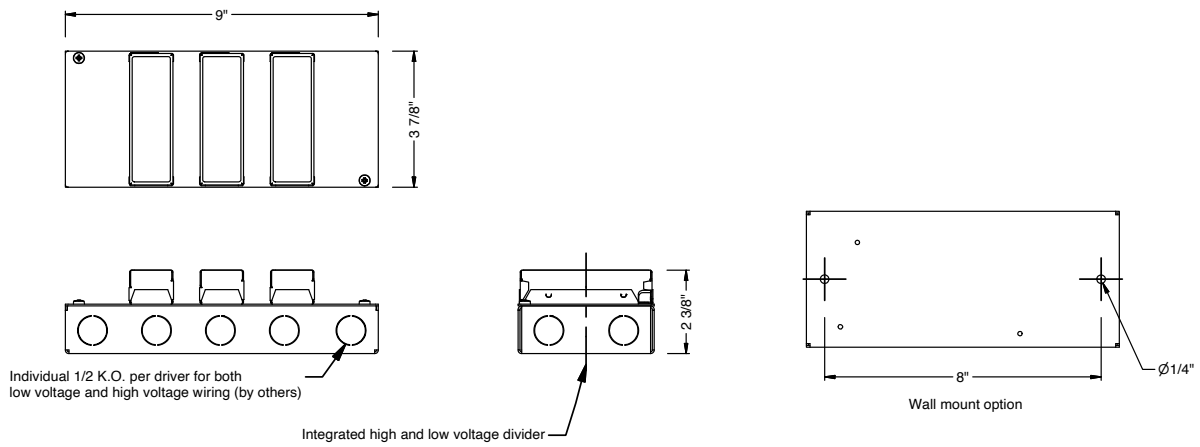
PROJECT INFORMATION		
JOB NAME		TYPE
ORDERING CODE		

DRIVER BOXES

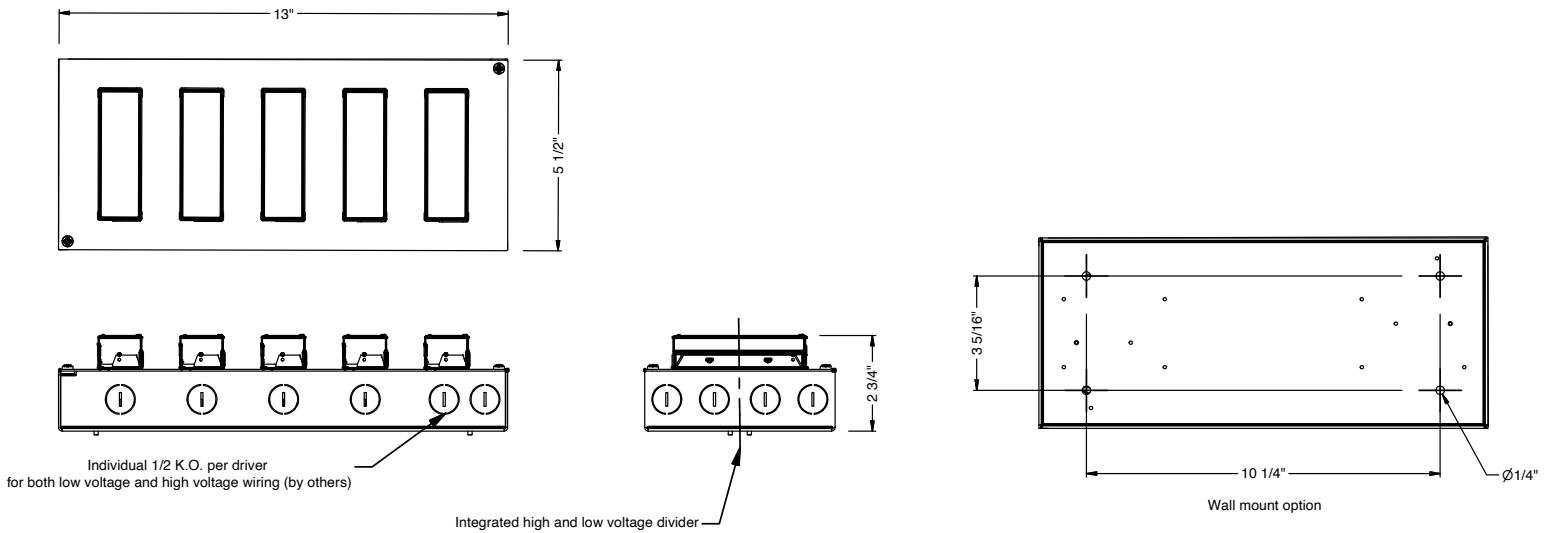
REMOTE SINGLE DRIVER BOX



REMOTE 2 TO 3 DRIVER BOX (2 Drivers for DIM10Z/DALI/DALIZ/LUT/LUTP)



REMOTE 4 TO 5 DRIVER BOX (3 Drivers for DIM10Z/DALI/DALIZ/LUT/LUTP)

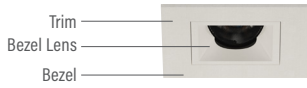


alphabet

PROJECT INFORMATION		
JOB NAME		TYPE
ORDERING CODE		

TRIM OPTIONS

TRIM/BEZEL COLORS



WH



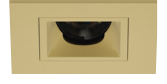
MC



BK



BZ



WT

OPTICAL OPTIONS

- UGR calculation based on CIE 117-1995; room size: 4H X 8H, reflectance: 70/50/20;
- UGR calculation based on 05LM WH fixtures, unless otherwise noted.

HCL

Honeycomb Louver



OPTIC	BEAM ANGLE	UGR
17D	17	≤5
22D	20	≤5
30D	26.8	10.7
40D	34.5	12.3
55D	44	17.7

NL

No Lens



OPTIC	BEAM ANGLE	UGR
30D	30.2	16.4
40D	40	17.1
55D	54.9	22.9

CL

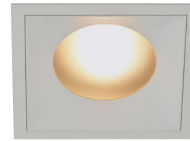
Clear Lens



OPTIC	BEAM ANGLE	UGR
30D	28	14.5
40D	36.4	16
55D	52.1	22.2

DL

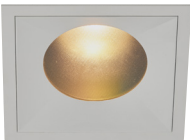
Diffused Lens



OPTIC	BEAM ANGLE	UGR
22D	36	20.1
30D	40	20.6
40D	45.1	22.1
55D	58	25.9

HET

High Efficiency Textured Lens



OPTIC	BEAM ANGLE	UGR
17D	21	7.8
22D	24	11.8
30D	33	16.5
40D	40.1	18
55D	53.8	22.9

SBL

Smoothing Beam Lens



OPTIC	BEAM ANGLE	UGR
17D	17.6	6.3
22D	23	12.1
30D	32	14.8
40D	40	15.9
55D	54	22.4

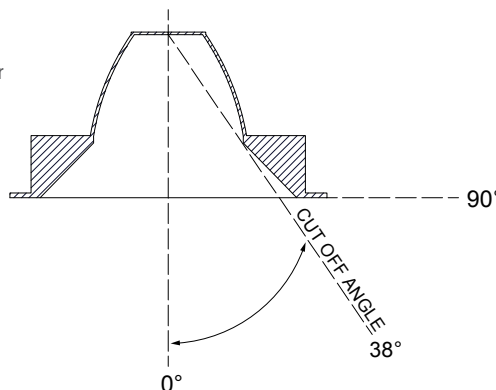
GLARE CONTROL

CUT-OFF ANGLE

Visual comfort is achieved with a lower cut-off angle due to improved glare control. The smaller the cut-off angle, the easier it is on the eye.

Alphabet downlights have been thoughtfully engineered to eliminate glare while still delivering functional illumination.

- Cut-off angle of NL and CL is 38°



alphabet

PROJECT INFORMATION		
JOB NAME		TYPE
ORDERING CODE		

PHOTOMETRIC DATA

05LM	
	90CRI
2200K	0.92
2400K	1
FC Formula = CBCP / Distance ²	

22D 22° WITH SBL LENS	
Throw Distance (ft)	Beam Diameter (ft)
6	2.5
8	3.3
10	4.1
12	5
14	5.8
Illuminance at Center (fc)	
46	
26	
16	
11	
8	
WATTS: 5.5	LPW: 63.5
LUMENS: 349	CCT: 2400K
INTENSITY	
DEGREE	CANDELA
0	1642
5	1443
15	537
25	102
35	21
45	8

30D 30° WITH NO LENS	
Throw Distance (ft)	Beam Diameter (ft)
6	3.2
8	4.3
10	5.4
12	6.5
14	7.5
Illuminance at Center (fc)	
38	
21	
14	
9	
7	
WATTS: 5.5	LPW: 82.5
LUMENS: 454	CCT: 2400K
INTENSITY	
DEGREE	CANDELA
0	1355
5	1250
15	683
25	218
35	45
45	14

40D 40° WITH NO LENS	
Throw Distance (ft)	Beam Diameter (ft)
6	4.3
8	5.8
10	7.2
12	8.6
14	10.1
Illuminance at Center (fc)	
26	
15	
10	
7	
5	
WATTS: 5.5	LPW: 82.4
LUMENS: 453	CCT: 2400K
INTENSITY	
DEGREE	CANDELA
0	950
5	920
15	667
25	265
35	58
45	16

55D 55° WITH NO LENS	
Throw Distance (ft)	Beam Diameter (ft)
6	6.2
8	8.3
10	10.4
12	12.5
14	14.5
Illuminance at Center (fc)	
15	
9	
5	
4	
3	
WATTS: 5.5	LPW: 89.1
LUMENS: 490	CCT: 2400K
INTENSITY	
DEGREE	CANDELA
0	547
5	539
15	467
25	314
35	156
45	58

10LM	
	90CRI
2200K	0.92
2400K	1
FC Formula = CBCP / Distance ²	

22D 22° WITH SBL LENS	
Throw Distance (ft)	Beam Diameter (ft)
6	2.5
8	3.3
10	4.1
12	5
14	5.8
Illuminance at Center (fc)	
81	
46	
29	
20	
15	
WATTS: 11	LPW: 56.5
LUMENS: 621	CCT: 2400K
INTENSITY	
DEGREE	CANDELA
0	2921
5	2568
15	956
25	181
35	38
45	15

30D 30° WITH NO LENS	
Throw Distance (ft)	Beam Diameter (ft)
6	3.2
8	4.3
10	5.4
12	6.5
14	7.5
Illuminance at Center (fc)	
67	
38	
24	
17	
12	
WATTS: 11	LPW: 73.4
LUMENS: 807	CCT: 2400K
INTENSITY	
DEGREE	CANDELA
0	2412
5	2224
15	1215
25	388
35	80
45	24

40D 40° WITH NO LENS	
Throw Distance (ft)	Beam Diameter (ft)
6	4.3
8	5.8
10	7.2
12	8.6
14	10.1
Illuminance at Center (fc)	
47	
26	
17	
12	
9	
WATTS: 11	LPW: 73.3
LUMENS: 806	CCT: 2400K
INTENSITY	
DEGREE	CANDELA
0	1691
5	1637
15	1186
25	472
35	104
45	29

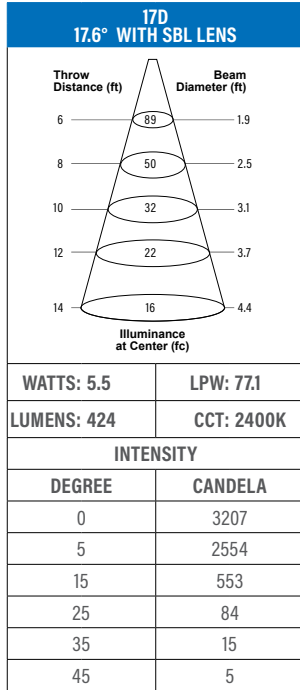
55D 55° WITH NO LENS	
Throw Distance (ft)	Beam Diameter (ft)
6	6.2
8	8.3
10	10.4
12	12.5
14	14.5
Illuminance at Center (fc)	
27	
15	
10	
7	
5	
WATTS: 11	LPW: 79.3
LUMENS: 872	CCT: 2400K
INTENSITY	
DEGREE	CANDELA
0	973
5	959
15	830
25	559
35	277
45	103

alphabet

PROJECT INFORMATION		
JOB NAME		TYPE
ORDERING CODE		

PHOTOMETRIC DATA

05LM	
	90CRI
2200K	0.92
2400K	1
FC Formula = CBCP / Distance ²	

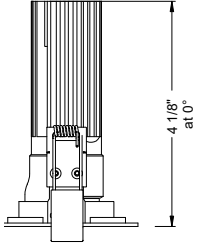


PROJECT INFORMATION		
JOB NAME		TYPE
ORDERING CODE		

MOUNTING OPTIONS

FIXTURE HEIGHT

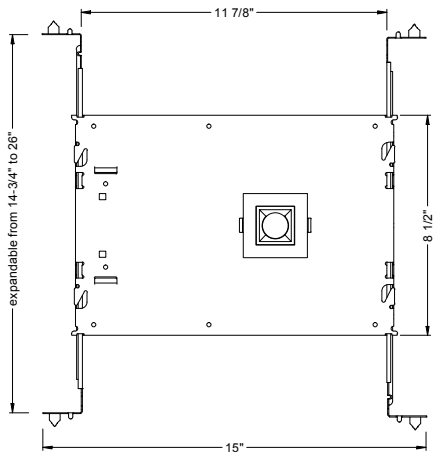
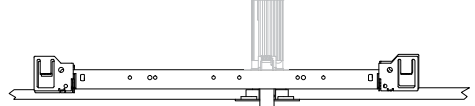
05LM - 10LM LOW LUMENS



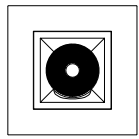
TRIMMED, TRIMLESS & MILLWORK

NC - NEW CONSTRUCTION

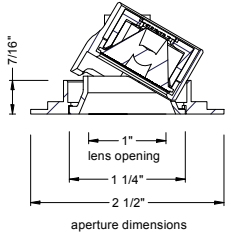
TRIM



TRIM

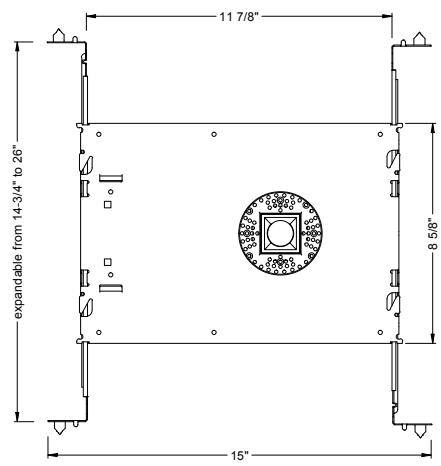
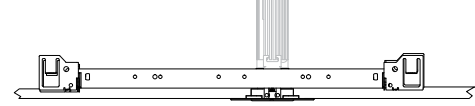


ceiling cutout
2-1/8" square
ceiling thickness
1/8" to 1-1/2"

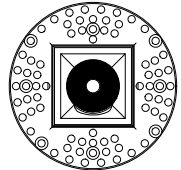


ADDITIONAL MOUNTING INFO	
New Construction Bar Hangers (included)	Mounting Length: 14-3/4" to 26"
Extension Kit p/n: K20266 (ordered separately, 1 per fixture)	Extends a pair of Bar Hangers Total Mounting Length: 29" to 48"

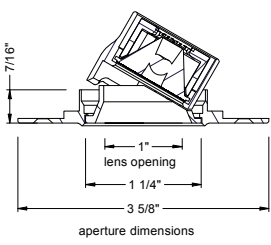
TRIMLESS



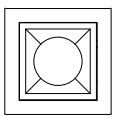
TRIMLESS



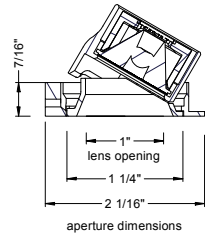
ceiling cutout
2-1/8" square
ceiling thickness
1/8" to 1-1/2"



TRIMLESS/MILLWORK



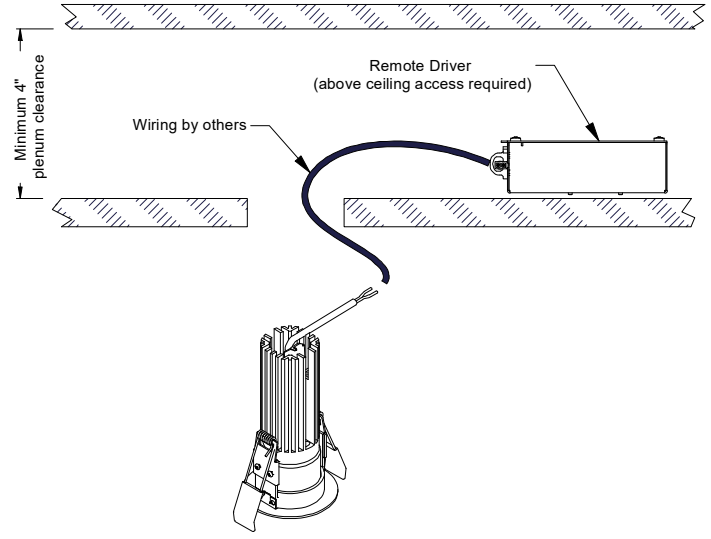
ceiling cutout
2-1/8" square
ceiling thickness
1/8" to 1-1/2"



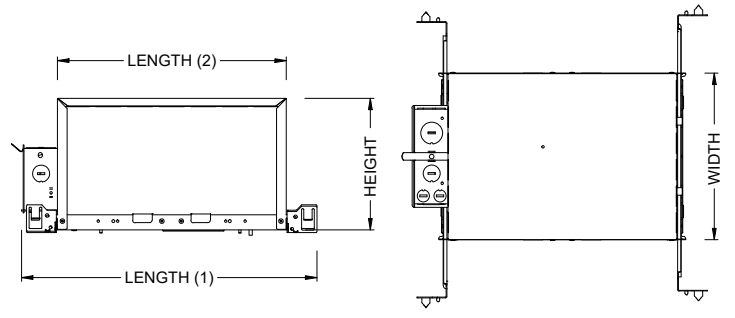
PROJECT INFORMATION		
JOB NAME	TYPE	
ORDERING CODE		

MOUNTING OPTIONS

RET - RETRO TRIM/TRIMLESS



IC - INSULATION CONTACT HOUSING ICAT - INSULATION CONTACT / AIR TIGHT CP - CHICAGO PLENUM

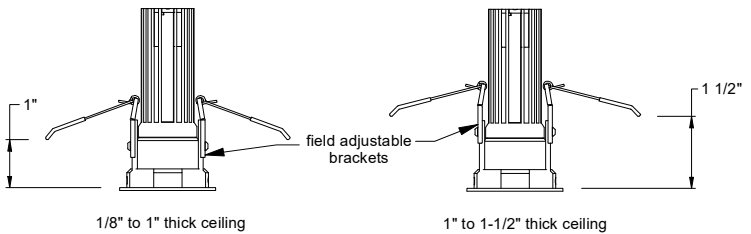


BOX SIZE	L1	L2	W	H
A	15 - 7/16"	11 - 3/4"	8 - 1/2"	6 - 3/4"

RATINGS / CERTIFICATIONS	NC	RET	IC	ICAT	CP
TYPE NON-IC	✓	✓			
TYPE IC			✓	✓	✓
CHICAGO PLENUM (CCEA)					✓
SUITABLE FOR AIR HANDLING PLENUMS				✓	✓
REDUCED AIRFLOW ASTM E283				✓	✓

BOX TYPE / LUMEN OUTPUT - STANDARD BEAMS (14°-60°)			
LUMEN OUTPUT	BOX - A		
	CP	IC	ICAT
05LM	✓	✓	✓
07LM	✓	✓	✓
10LM			

CEILING THICKNESS			
FIXTURE TYPE	MOUNTING TYPE		
	NC, IC, ICAT, CP, RET	NC, IC, ICAT, CP, RET	NC, IC, ICAT, CP, RET
	STANDARD CEILING THICKNESS	THICK CEILING THICKNESS	CEILING CUTOUT
TRIM	1/8" to 1.0"	1.0" to 1 1/2"	2-1/8" square
TRIMLESS	1/8" to 1.0"	1.0" to 1 1/2"	2-1/8" square
MILLWORK (TRIMLESS)	1/8" to 1.0"	1.0" to 1 1/2"	2-1/8" square



FIXTURE TILT INFO	
TILT	CEILING THICKNESS
0° TO 30°	1/8" to 1.0"
0° TO 20°	1.0" to 1 1/2"

PROJECT INFORMATION		
JOB NAME		TYPE
ORDERING CODE		

BATTERY OPTIONS

EMERGENCY BATTERY

IOTA's ILB Battery Backups are UL Listed LED emergency drivers that allow the same LED fixture to be used for both normal and emergency operation. In the event of a power failure, the ILB switches to the emergency mode and operates the existing fixture for 90 minutes. The unit contains a battery, charger, and converter circuit in a single can. The Constant Power design of the ILB maintains the output wattage to the LED array even as the system voltage diminishes. UL 924 Listed for U.S. and Canada. UL 1310 Certified, Output Class 2 Compliant. Includes single-piece TBTS test switch and charge indicator accessory kit. For use with switched and unswitched fixtures, and includes Two-wire universal AC input. Meets or exceeds all National Electric Code and Life Safety Code Emergency Lighting Requirements. Rated for use in Plenum, Damp Location, Recessed Type IC, and Enclosed and Gasketed Luminaires.

REMOTE TEST SWITCH

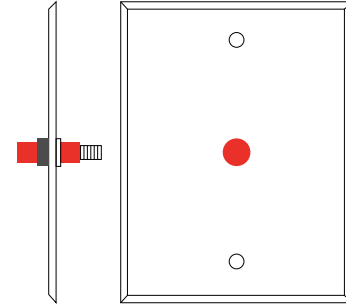
The Remote Test Switch may be mounted adjacent to the LED Fixture by others.

EMERGENCY BATTERY ACCESS

Above ceiling access is recommended for ease of service, but LED Fixture Sizes of 4" and Larger are capable of below ceiling access. IC/ICAT/CP Box and ITS option require an access panel in the ceiling (or other form of access) adjacent to the installation location of the Emergency Battery.

REMOTE LOCATION

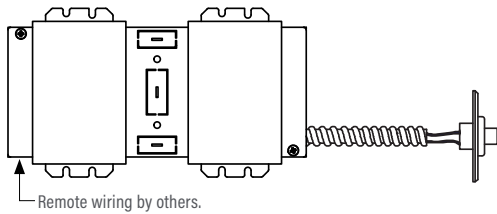
Maximum remote mounting distance of the emergency driver shall be 50 feet. Remote location wiring provided by others. Follow all Local and National Electric/ Building Codes.



Remote Test Switch

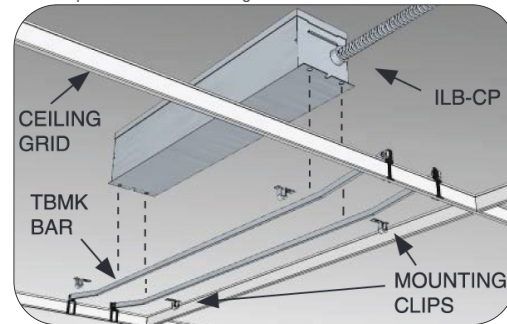
EM MODE OUTPUT (DELIVERED LUMENS)	
LUMEN ORDERING CODE	EM7
ALL OPTIONS (07LM TO 10LM)	600
Based on 24K, 90CRI	

REMOTE EM BATTERY (REMOTE TEST SWITCH)



Accessory

76066 Optional T-Grid Mounting Kit¹



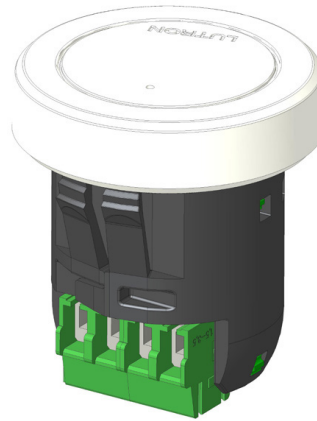
1. Can be used with any of the Emergency Battery Backups. Must be ordered as a separate line item.

PROJECT INFORMATION		
JOB NAME		TYPE
ORDERING CODE		

AWNDR OPTIONS

Athena Wireless Node

The Athena wireless node is a radio frequency (RF) device that enables simple, digital control of individual light fixtures in an Athena control system.



Athena Wireless Node RF

AWNDR

Plenum rated and can be installed above the ceiling for wireless control of a fixture without any impact on fixture aesthetics.

FEATURES

- Enables individual, wireless control of each fixture in an Athena control system. Accommodates zone and control changes without rewiring.
- Installed at factory – no wiring required on-site. Fixture is ready to communicate wirelessly once power is connected.
- All drivers on the link are controlled as a single zone.

REGULATORY APPROVALS

- cULus Listed (UL916)
- Complies with requirements for use in other spaces used for environmental air (plenums) per NEC® 2014 300.22(C)(3).
- FCC compliant with the limits for a Class B digital device.
- IC (Industry Canada)
- ANSI C137.1 0-10 V- Electronic Off

POWER / LOAD

- IEC SELV/NEC® Class 2
- 1 Watt

ENVIRONMENTAL

- Ambient operating temperature (immediate vicinity of Athena wireless node): **32 °F to 131 °F** (0 °C to 55 °C), 0% to 90% humidity.

BATTERY OPTIONS

- For EM options please consult factory.

Note: Default behavior prior to programming

- Light level 100%
- Athena wireless node performs an unprogrammed startup sequence on every power up until the device is added to an Athena system.
- Each Athena wireless node should be installed within 25 ft (7.62 m) of two or more Athena wireless nodes or other Clear Connect – Type X devices.
- For Chicago plenum installations, the Athena wireless node may not be installed in the plenum space. It must be installed in the occupied space.

For servicing the driver/j-box, access above ceiling is required. (NC Mounting)

IC/ICAT/CP not available in AWNR.