

Light efficiency:

55 Lumen/Watt

Light quality:

CRI: 94.5

Color temperature:

3063 K

Output: 606 lm

Peak: 2718 cd

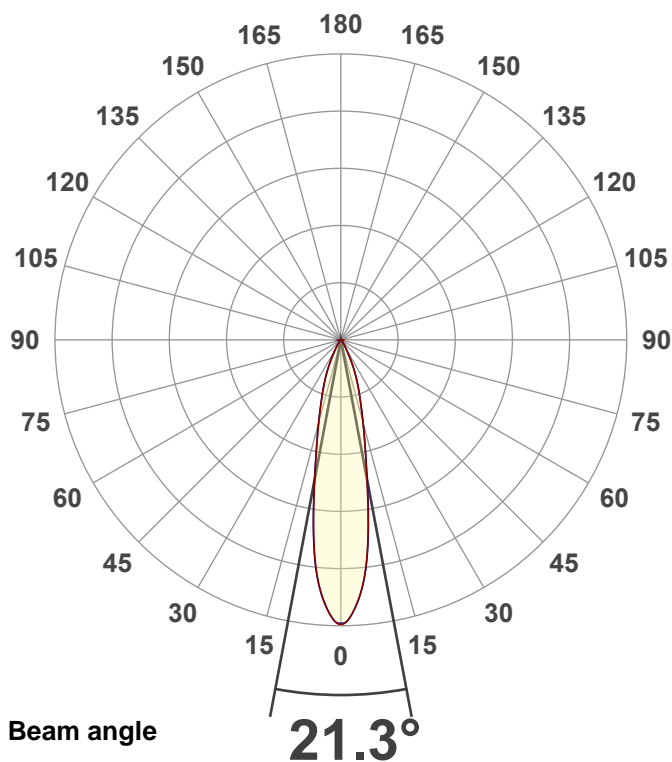
Power: 11.0 W

PF: 0.94



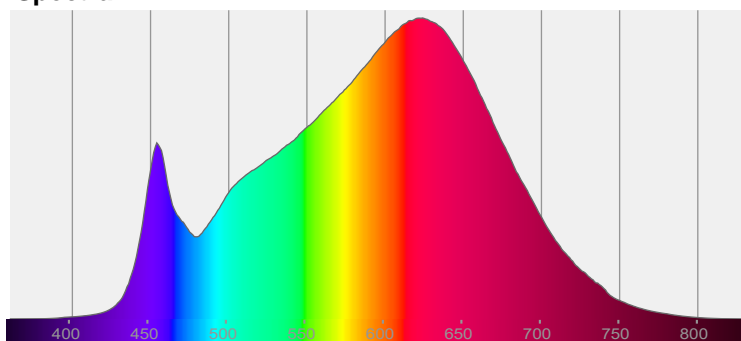
NU1-RA-TW-07LM-2765-95-20D-NA-NL-WH-WH

Date and time:  
9/4/2024 3:00:57 PM

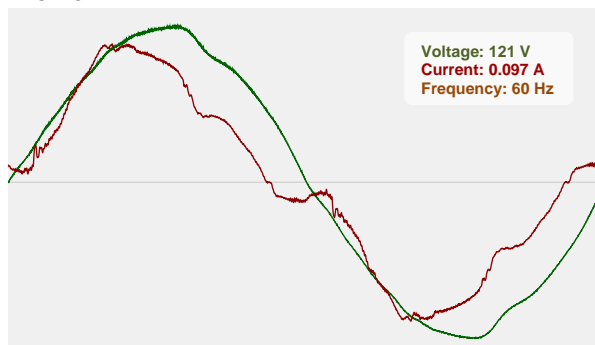


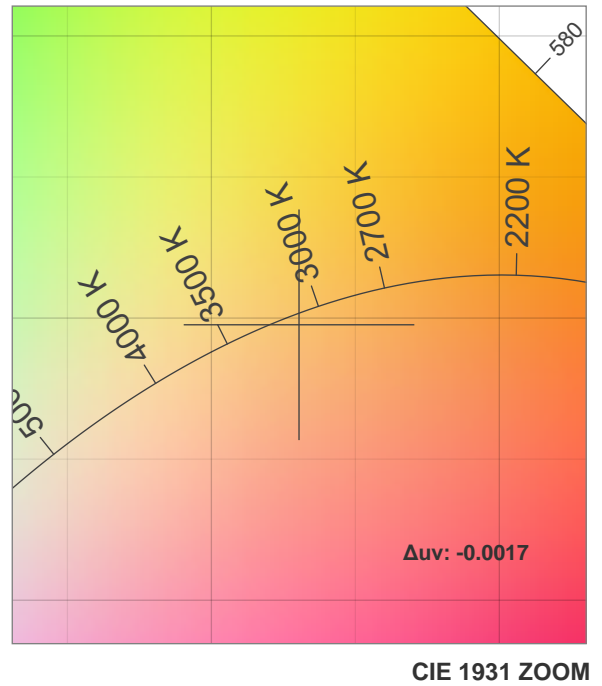
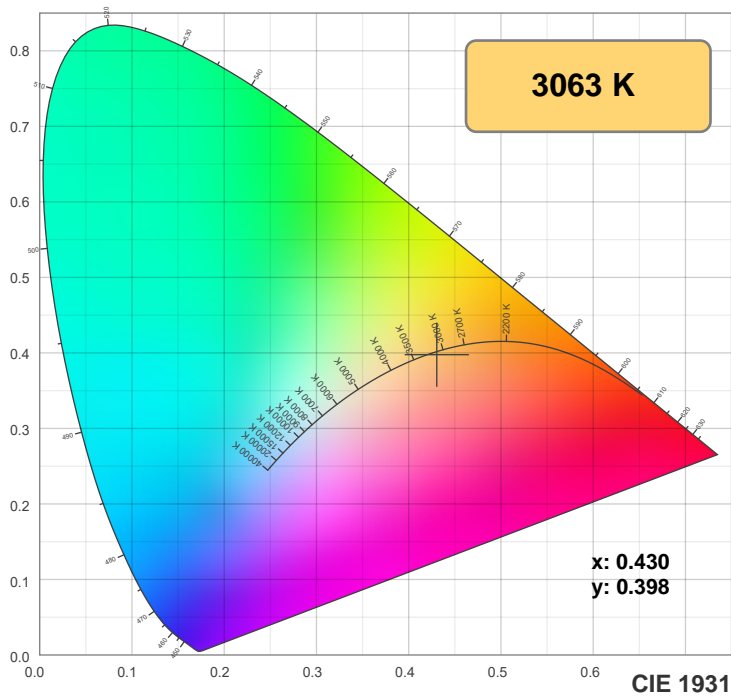
CIE 1931  
x: 0.430  
y: 0.398

Spectra

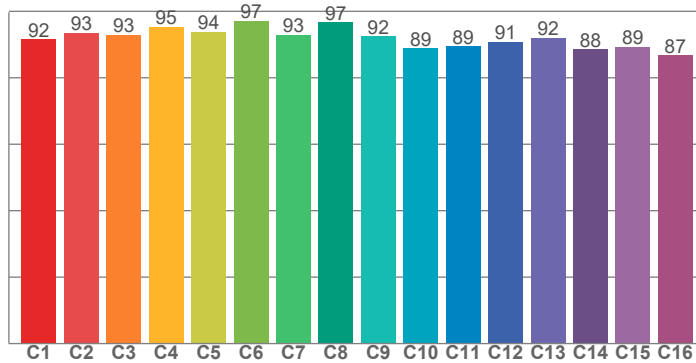


Power

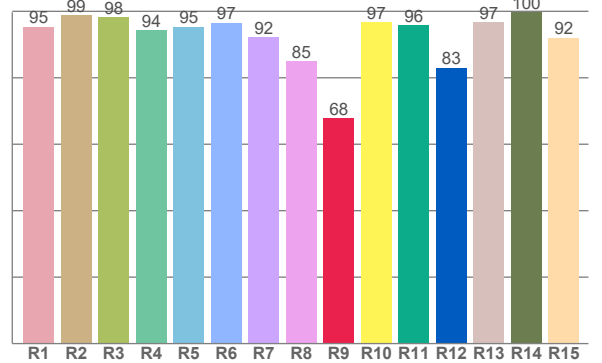




**TM30: 92.2**



**CRI: 94.5 (R1-R8)**



CRI R values, only R1-R8 are used to calculate final CRI value

R1	R2	R3	R4	R5	R6	R7	R8	R9	R10	R11	R12	R13	R14	R15
95.4	98.8	98.2	94.3	95.3	96.6	92.1	84.9	67.9	96.6	95.7	83.1	96.7	99.8	92.0

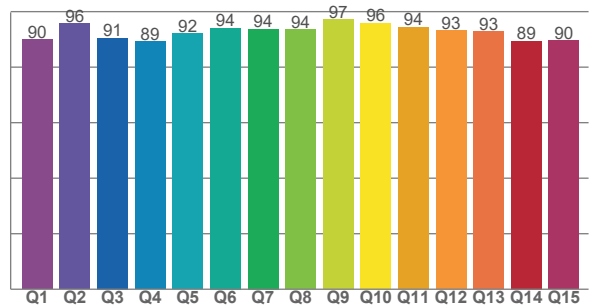
TM30 C values, 16 binned values out of total of 99 C values

C1	C2	C3	C4	C5	C6	C7	C8	C9	C10	C11	C12	C13	C14	C15	C16
91.6	93.5	92.9	95.3	93.9	97.1	93.0	96.7	92.4	88.9	89.4	90.7	92.0	88.5	89.4	86.7

CQS Q values

Q1	Q2	Q3	Q4	Q5	Q6	Q7	Q8	Q9	Q10	Q11	Q12	Q13	Q14	Q15
89.9	95.8	90.5	89.3	92.1	94.1	93.7	93.5	97.2	95.8	94.4	93.2	92.8	89.4	89.5

**CQS: 92.2**



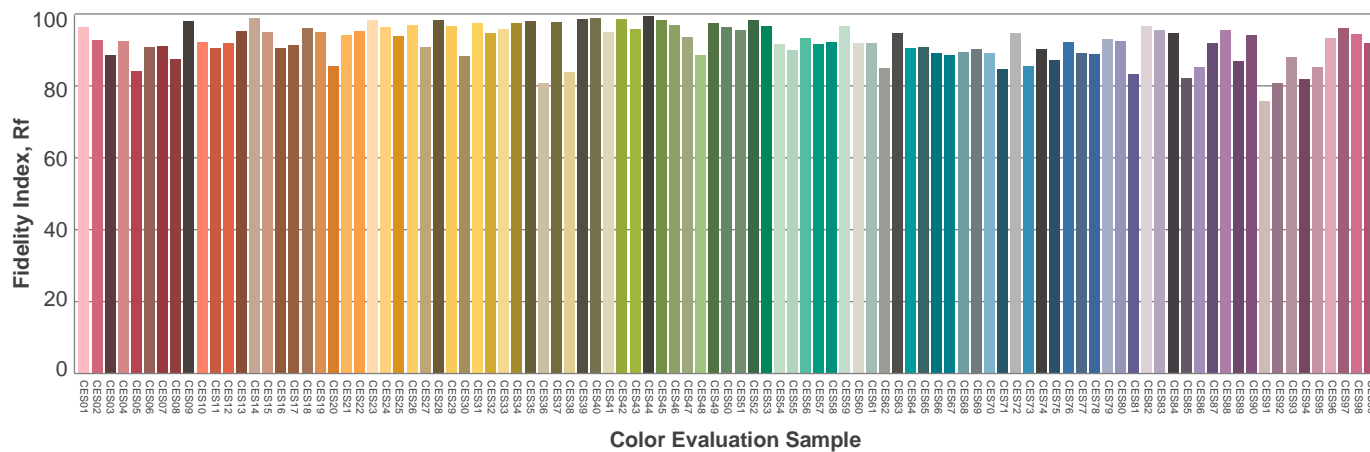
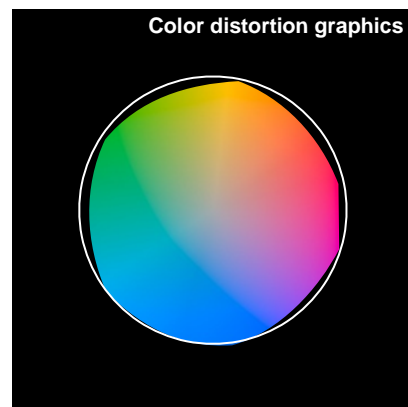
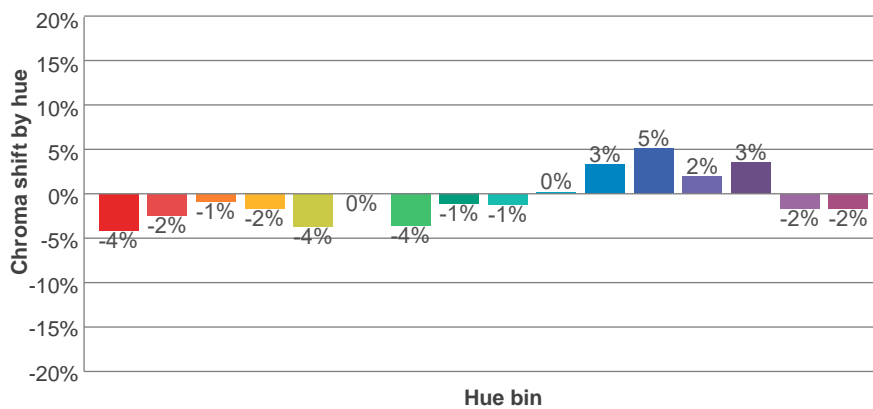
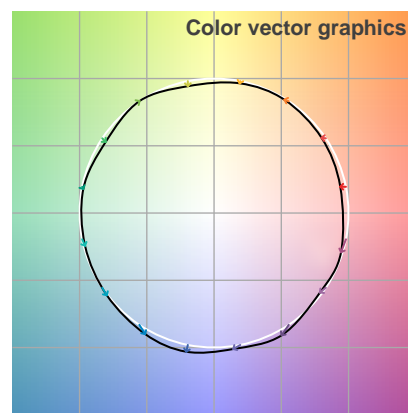
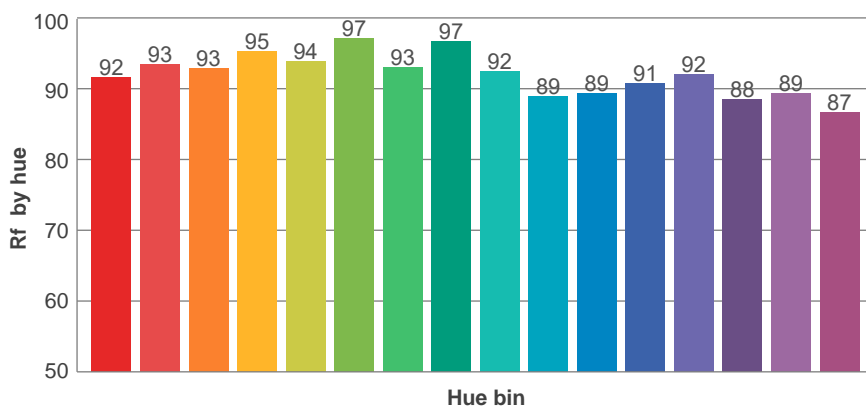
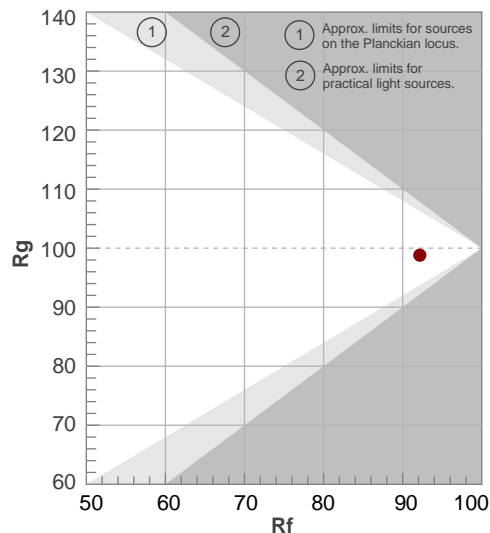
## Color parameters

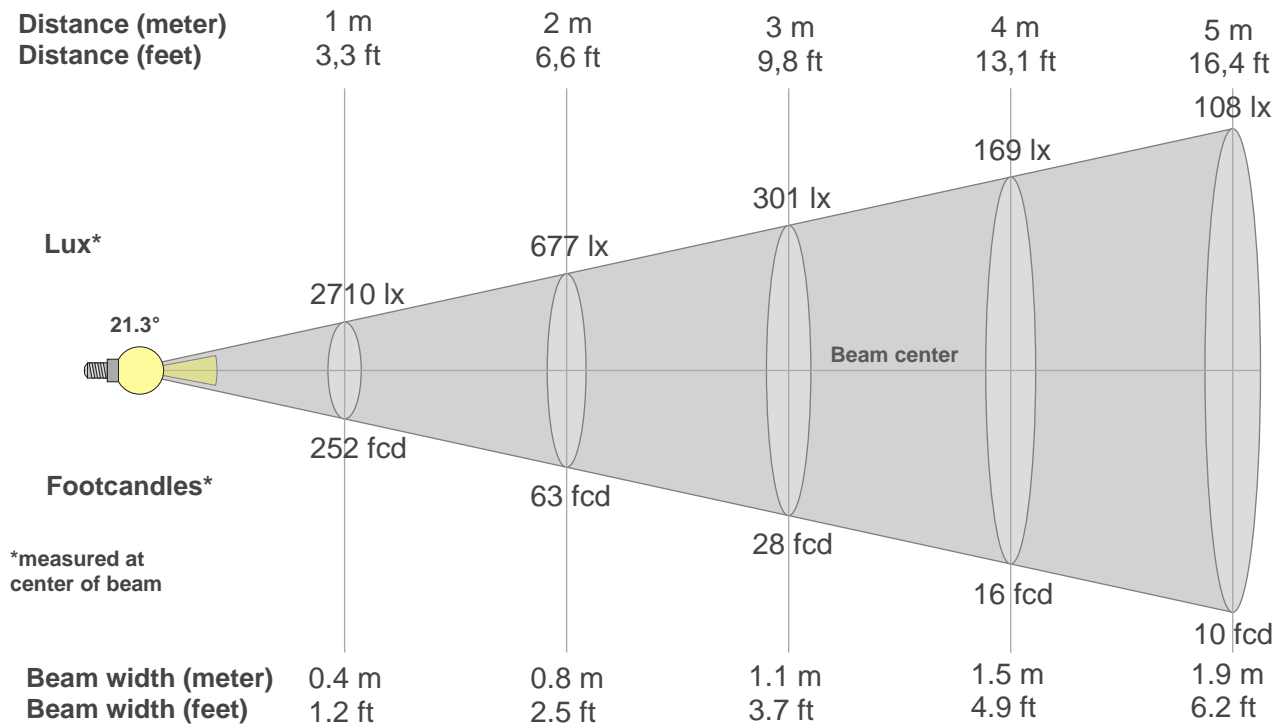
Color temperature	Color rendering index	Red component	Color fidelity	Color gamut	Color quality scale	Color coordinate cie 1931	Color coordinate cie 1931	Color coordinate	Color coordinate	Color deviation from black body
CCT	CRI	CRI R9	TM30 Rf	TM30 Rg	CQS	x	y	u	v	Δuv
3063 K	94.5	67.9	92.2	98.8	92.2	0.430	0.398	0.249	0.345	-0.0017

### Fidelity index $R_f$

## Gammut index Rg

		Graphic shifts (%)	
Hue Bin	$R_f$	Chroma	Hue
1	92	-4%	1%
2	93	-2%	2%
3	93	-1%	3%
4	95	-2%	0%
5	94	-4%	1%
6	97	0%	0%
7	93	-4%	1%
8	97	-1%	1%
9	92	-1%	5%
10	89	0%	7%
11	89	3%	7%
12	91	5%	0%
13	92	2%	-6%
14	88	3%	-9%
15	89	-2%	-5%
16	87	-2%	-10%





#### Beam intensities from 1-20m

1m	2m	3m	4m	5m	6m	7m	8m	9m	10m	11m	12m	13m	14m	15m	16m	17m	18m	19m	20m
3.3ft	6.6ft	9.8ft	13.1ft	16.4ft	19.7ft	23ft	26.2ft	29.5ft	32.8ft	36.1ft	39.4ft	42.7ft	45.9ft	49.2ft	52.5ft	55.8ft	59.1ft	62.3ft	65.6ft
2710lx	677lx	301lx	169lx	108lx	75lx	55lx	42lx	33lx	27lx	22lx	19lx	16lx	14lx	12lx	11lx	9lx	8lx	8lx	7lx
251.7fcd	62.9fcd	28fcd	15.7fcd	10.1fcd	7fcd	5.1fcd	3.9fcd	3.1fcd	2.5fcd	2.1fcd	1.7fcd	1.5fcd	1.3fcd	1.1fcd	1fcd	0.9fcd	0.8fcd	0.7fcd	0.6fcd

#### Intensities in 0° c-plane

0°	2°	4°	6°	8°	10°	12°	14°	16°	18°	20°	22°	24°	26°	28°	30°	32°	34°	36°	38°
2710	2638	2466	2219	1862	1463	1142	908	730	591	482	389	301	217	148	104	75	55	41	30
100%	97%	91%	82%	69%	54%	42%	34%	27%	22%	18%	14%	11%	8%	5%	4%	3%	2%	1%	1%

#### Intensities in 90° c-plane

0°	2°	4°	6°	8°	10°	12°	14°	16°	18°	20°	22°	24°	26°	28°	30°	32°	34°	36°	38°
2710	2636	2470	2225	1875	1479	1151	916	737	598	490	396	303	216	146	103	75	55	42	33
100%	97%	91%	82%	69%	55%	42%	34%	27%	22%	18%	15%	11%	8%	5%	4%	3%	2%	2%	1%

#### Intensities in 180° c-plane

0°	2°	4°	6°	8°	10°	12°	14°	16°	18°	20°	22°	24°	26°	28°	30°	32°	34°	36°	38°
2710	2638	2466	2219	1862	1463	1142	908	730	591	482	389	301	217	148	104	75	55	41	30
100%	97%	91%	82%	69%	54%	42%	34%	27%	22%	18%	14%	11%	8%	5%	4%	3%	2%	1%	1%

#### Intensities in 270° c-plane

0°	2°	4°	6°	8°	10°	12°	14°	16°	18°	20°	22°	24°	26°	28°	30°	32°	34°	36°	38°
2710	2636	2470	2225	1875	1479	1151	916	737	598	490	396	303	216	146	103	75	55	42	33
100%	97%	91%	82%	69%	55%	42%	34%	27%	22%	18%	15%	11%	8%	5%	4%	3%	2%	2%	1%

Beam angle 50%	Field angle 10%	Cutoff angle 2,5%	Intensity ratio in 120° cone	Intensity ratio in 90° cone
21.3°	49.4°	65.2°	98.4%	96.6%