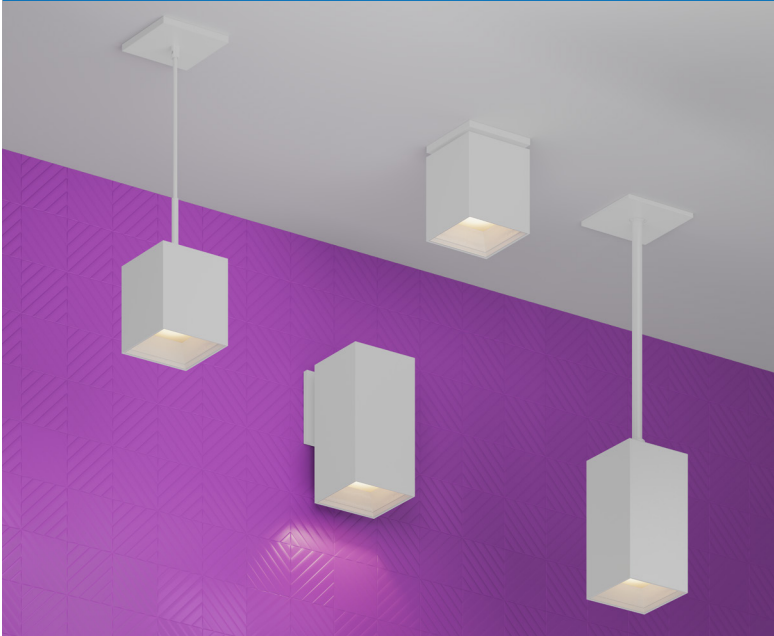


PROJECT INFORMATION		
JOB NAME		TYPE
ORDERING CODE		

BETA 4

4" Square Standard White Wall Wash



WW BEAM		
(Note: Specifications are subject to change without notice)		
14mm COB PERFORMANCE DATA		
LED LIGHT ENGINE	NOMINAL DELIVERED LUMENS	SYSTEM WATTAGE
10LM	860LM @30K/80CRI	9W
15LM	1300LM @30K/80CRI	13W
20LM	1830LM @30K/80CRI	17W
25LM	2220LM @30K/80CRI	21W
30LM	2700LM @30K/80CRI	26W
35LM	3130LM @30K/80CRI	31W
10LM	730LM @30K/90CRI	9W
15LM	1110LM @30K/90CRI	13W
20LM	1550LM @30K/90CRI	17W
25LM	1880LM @30K/90CRI	21W
30LM	2290LM @30K/90CRI	26W
35LM	2660LM @30K/90CRI	31W
Notes	Delivered lumens based on WW optic (see page 2)	



CASAMBI

FEATURES

- Seamless extrusion with powder coated finish for clean aesthetics
- Thermally optimized for longevity
- 50° x 30° Wall Wash beam spread
- UGR < 19
- Micro slim canopy option at 1/4"-3/8" depth plus 1/2" diameter stem.
- Multiple mounting, glare control options and finishes available

DIMMING AND CONTROLS

- Flicker free 0-10V dimming to 1%
- Leading & trailing edge (Triac/ELV) dimming to 1%
- Lutron Hi-lume 2-Wire Eco System dimming to 1%
- Casambi bluetooth dimming to 1%

CONSTRUCTION

- Extruded aluminum housing
- Lexan™ (PC) Optimal connectivity for wireless control signal
- Machined aluminum canopy
- SVT pendant cord

LED

- 90 CRI: SDCM = 2-step MacAdam Ellipse, Lumen Maintenance: L₇₀ > 66,000 hrs
- 80 CRI: SDCM = 2-step MacAdam Ellipse, Lumen Maintenance: L₇₀ > 66,000 hrs

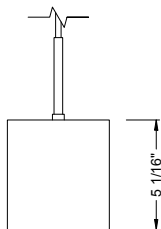
LISTING

- ULus Listed to UL1598 & UL2108; cUL Listed to CSA C22.2 #250.0
- Suitable for dry and damp locations
- 5 Year Limited warranty

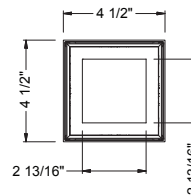
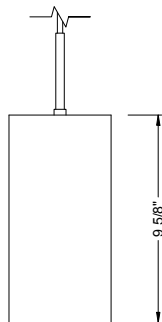
ELECTRICAL

- 120V-277V, 120 only Triac / ELV
- Power factor ≥ 0.9
- 2kV driver input surge protection
- Remote emergency test switch
- 7 W, 10W (T20 CEC) and 12W EM 90min battery
- Low Voltage Luminaire option, see page 5.

SHORT



MEDIUM



alphabet

PROJECT INFORMATION		
JOB NAME		TYPE
ORDERING CODE		

ORDERING CODE		
SERIES	BETA	cylinder series
TYPE	4Q	4" square
SIZE	S ¹	short, 5-1/16"
	M	medium, 9-5/8"
LED	SW	standard white
DELIVERED LUMENS	10LM	860 lm
	15LM	1300 lm
	20LM	1830 lm
	25LM	2220 lm
	30LM	2700 lm
	35LM	3130 lm
Standard Configuration: 3000K 80CRI WW optic Calculated Delivered Lumens = [Delivered Lumen Value] x [CCT Multiplier] x [Reflector Multiplier]		
CCT	27K	2700K
	30K	3000K
	35K	3500K
	40K	4000K
CRI	80	80 CRI
	90	90 CRI
OPTIC & LM MULTIPLIER SEE PAGE 3	WW	wall wash with diffused angle bending lens
FINISH	BK	black
	WH	white
	MC	matte chrome
	CC ²	custom color, consult factory for details
Antimicrobial finish, add AM to black, white or matte chrome i.e. BKAM.		
BEZEL COLOR	BK	black (0.98)
	WH	white (1.00)
	MC	matte chrome (0.99)
	BZ	bronze (0.98)
	WT	wheat (0.99)
	CC ²	custom color, consult factory for details
Antimicrobial finish, add AM to black, white or matte chrome i.e. BKAM.		

ORDERING CODE		
MOUNTING OPTIONS SEE PAGE 5	W	wall mount
	S	surface mount
	P ³	pendant, 108" flexible cord
	RP	rigid pendant 4' stem with swivel stem/canopy
	RP5	rigid pendant 5' stem with swivel stem/canopy
	RP6	rigid pendant 6' stem with swivel stem/canopy
	RP8	rigid pendant 8' stem with swivel stem/canopy
	RP10	rigid pendant 10' stem with swivel stem/canopy
	RPF2	rigid pendant 2' with fixed stem/canopy, not field cuttable
	RPF3	rigid pendant 3' with fixed stem/canopy, not field cuttable
RPF4	rigid pendant 4' with fixed stem/canopy, not field cuttable	
RPF6	rigid pendant 6' with fixed stem/canopy, not field cuttable	
JCOV-XX ⁴	conduit junction box cover with knockouts, complete XX code with desired pendant mount	
VOLTAGE	120	120V
	UNV	120V-277V
	LVL ⁵	low voltage luminaire
DIMMING	DIM10	0-10V dimming to 1%
	LUTP ⁶	Lutron Hi-lume Premier Ecosystem dimming to 0.1%, Soft-on & Fade-to-Black
	ELVI ⁷	leading & trailing edge (Triac/ELV) dimming to 1%
	CAS	Casambi Bluetooth control with flicker free 1% dimming
ND	No Driver Included. Customer to Supply PoE system components or order remote driver separately. Refer to POE/Remote Driver reference sheet for additional details.	
ELECTRICAL OPTIONS	EM7	remote emergency battery backup, 90 minutes at 7 watts to LED
	EM12	remote emergency battery backup, 90 minutes at 12 watts to LED
	EM10CA20	remote emergency battery backup, 90 minutes at 10W to LED, CA title 20

YOUR COMPLETED ORDERING CODE	
Follow the steps to specify your fixture, example:	
BETA - 4Q - SW - M - 25LM - 35K - 80 - WW - WH - WH - P - UNV - DIM10 - EM7	

NOTES

1. Only available in 10LM and 15LM.
2. Custom set up fee plus minimum quantity required per color.
3. Canopy type: Slim square - ELVI/CAS, Deep round - DIM10/LUTP.
4. JCOV offered with round canopy. Not available in RP.
5. Must select ND dimming code, for remote driver or POE specifications see page 7.
6. LUTP available in 15LM/20LM.
7. ELVI available in 120V.

* Slim canopy with rigid stem connection shall be used in jurisdictions that DO NOT require light fixtures to freely swing in lateral directions, complying with local and national building codes.

** RP mounting with swivel is recommended to be installed on a 4in square or 4in deep regress 2-1/8" octagonal junction box.

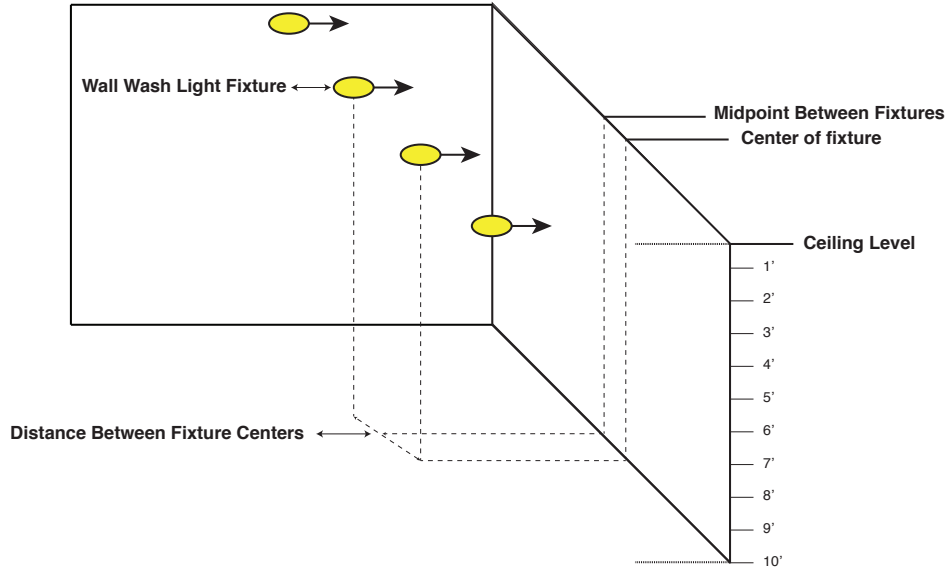
BEZEL OPTIONS

BEZEL COLORS



PROJECT INFORMATION		
JOB NAME		TYPE
ORDERING CODE		

PHOTOMETRIC DATA DIAGRAM



PHOTOMETRIC DATA CHARTS

FOOT CANDLE MEASUREMENT

STANDARD WHITE WALL WASH 35LM 80CRI 3000K

MOUNTING DISTANCE	2' FROM WALL						3' FROM WALL						4' FROM WALL					
	2' ON CENTER		3' ON CENTER		4' ON CENTER		2' ON CENTER		3' ON CENTER		4' ON CENTER		3' ON CENTER		4' ON CENTER		6' ON CENTER	
FIXTURE SPACING																		
DISTANCE FROM CEILING	CENTER	MID POINT	CENTER	MID POINT	CENTER	MID POINT	CENTER	MID POINT	CENTER	MID POINT	CENTER	MID POINT	CENTER	MID POINT	CENTER	MID POINT	CENTER	MID POINT
1'	57.6	55.3	45.6	30.8	42.3	16.6	16.7	17.1	12	11.6	10.1	7.9	5.4	5.4	4.2	4.1	3.4	2.3
2'	150.6	164	112.8	106.8	103.5	51.2	51.2	52.4	35.5	38.1	28.9	26.5	18.2	18.5	14.4	13.8	11.4	7.7
3'	131	126.4	84.7	91.5	71.2	66.7	102.7	99.2	66.9	72.9	52.9	57.3	31.7	33.2	23.6	27.5	18.2	15.4
4'	86.2	88.8	62.6	62	46.3	48.7	86.7	90.8	65	63	46.8	50.6	52	50.8	37.6	41	28.2	26.7
5'	57	59.4	43.5	42.8	33.1	33.7	65.8	68.8	51	50.2	39.1	39.5	47.9	48.2	38	37.4	25	26.5
6'	38.7	39.9	30.3	30.9	24.3	23.9	48.5	50	38.3	39.5	31	30.4	39.6	41.3	32.8	31.6	21.2	22.9
7'	26.9	27.6	21.7	22.6	17.9	17.8	35.5	36.4	29	30.2	23.9	23.8	32	33.5	26.7	26.6	18.3	18.9
8'	19.2	19.6	16.1	16.7	13.4	13.6	26.3	26.9	22.2	23.1	18.5	18.9	25.7	26.7	21.6	22.2	15.6	15.5
9'	14.1	14.4	12.1	12.6	10.2	10.6	19.8	20.2	17.2	17.7	14.5	15.1	20.5	21.2	17.5	18.2	13.1	12.8
10'	10.6	10.8	9.3	9.6	8	8.3	15.2	15.4	13.5	13.8	11.6	12	16.5	16.9	14.3	14.8	10.9	10.7

PROJECT INFORMATION		
JOB NAME		TYPE
ORDERING CODE		

PHOTOMETRIC DATA CHARTS

FOOT CANDLE MEASUREMENT

STANDARD WHITE WALL WASH 30LM 80CRI 3000K																		
MOUNTING DISTANCE	2' FROM WALL						3' FROM WALL						4' FROM WALL					
FIXTURE SPACING	2' ON CENTER		3' ON CENTER		4' ON CENTER		2' ON CENTER		3' ON CENTER		4' ON CENTER		3' ON CENTER		4' ON CENTER		6' ON CENTER	
DISTANCE FROM CEILING	CENTER	MID POINT	CENTER	MID POINT	CENTER	MID POINT	CENTER	MID POINT	CENTER	MID POINT	CENTER	MID POINT	CENTER	MID POINT	CENTER	MID POINT	CENTER	MID POINT
1'	49.6	47.6	39.2	26.5	36.4	14.3	14.4	14.7	10.3	10	8.7	6.8	4.6	4.7	3.7	3.5	2.9	2
2'	129.6	141.2	97	91.9	89.1	44.1	44.1	45.1	30.5	32.8	24.9	22.8	15.6	15.9	12.4	11.9	9.8	6.6
3'	112.8	108.8	72.9	78.7	61.3	57.4	88.4	85.4	57.6	62.7	45.6	49.3	27.3	28.6	20.3	23.7	15.6	13.3
4'	74.2	76.4	53.8	53.4	39.8	41.9	74.7	78.2	55.9	54.2	40.3	43.6	44.7	43.7	32.4	35.3	24.3	23
5'	49.1	51.1	37.4	36.8	28.5	29	56.7	59.2	43.9	43.2	33.6	34	41.2	41.5	32.7	32.2	21.6	22.8
6'	33.3	34.3	26	26.6	20.9	20.6	41.7	43.1	33	34	26.7	26.2	34.1	35.5	28.2	27.2	18.2	19.7
7'	23.1	23.7	18.7	19.5	15.4	15.3	30.5	31.3	25	26	20.6	20.5	27.6	28.9	23	22.9	15.7	16.3
8'	16.5	16.9	13.8	14.4	11.5	11.7	22.6	23.1	19.1	19.8	15.9	16.3	22.1	23	18.6	19.1	13.5	13.3
9'	12.1	12.4	10.5	10.8	8.8	9.1	17	17.4	14.8	15.3	12.5	13	17.7	18.2	15	15.7	11.3	11
10'	9.1	9.3	8	8.3	6.9	7.2	13.1	13.3	11.6	11.9	10	10.4	14.2	14.5	12.3	12.8	9.4	9.2

STANDARD WHITE WALL WASH 20LM 80CRI 3000K																		
MOUNTING DISTANCE	2' FROM WALL						3' FROM WALL						4' FROM WALL					
FIXTURE SPACING	2' ON CENTER		3' ON CENTER		4' ON CENTER		2' ON CENTER		3' ON CENTER		4' ON CENTER		3' ON CENTER		4' ON CENTER		6' ON CENTER	
DISTANCE FROM CEILING	CENTER	MID POINT	CENTER	MID POINT	CENTER	MID POINT	CENTER	MID POINT	CENTER	MID POINT	CENTER	MID POINT	CENTER	MID POINT	CENTER	MID POINT	CENTER	MID POINT
1'	33.6	32.3	26.6	18	24.7	9.7	9.7	10	7	6.8	5.9	4.6	3.1	3.2	2.5	2.4	2	1.4
2'	87.9	95.7	65.8	62.3	60.4	29.9	29.9	30.6	20.7	22.2	16.9	15.5	10.6	10.8	8.4	8.1	6.7	4.5
3'	76.5	73.8	49.4	53.4	41.5	38.9	59.9	57.9	39.1	42.5	30.9	33.5	18.5	19.4	13.8	16	10.6	9
4'	50.3	51.8	36.5	36.2	27	28.4	50.6	53	37.9	36.7	27.3	29.5	30.3	29.6	22	23.9	16.4	15.6
5'	33.3	34.6	25.4	24.9	19.3	19.7	38.4	40.2	29.7	29.3	22.8	23.1	28	28.1	22.2	21.8	14.6	15.5
6'	22.6	23.3	17.7	18	14.2	14	28.3	29.2	22.4	23	18.1	17.7	23.1	24.1	19.1	18.4	12.4	13.3
7'	15.7	16.1	12.7	13.2	10.4	10.4	20.7	21.2	16.9	17.6	14	13.9	18.7	19.6	15.6	15.5	10.7	11
8'	11.2	11.5	9.4	9.7	7.8	8	15.3	15.7	13	13.5	10.8	11.1	15	15.6	12.6	13	9.1	9
9'	8.2	8.4	7.1	7.3	6	6.2	11.6	11.8	10	10.3	8.5	8.8	12	12.4	10.2	10.6	7.6	7.5
10'	6.2	6.3	5.5	5.6	4.7	4.9	8.9	9	7.8	8.1	6.8	7	9.6	9.9	8.3	8.7	6.3	6.2

STANDARD WHITE WALL WASH 10LM 80CRI 3000K																		
MOUNTING DISTANCE	2' FROM WALL						3' FROM WALL						4' FROM WALL					
FIXTURE SPACING	2' ON CENTER		3' ON CENTER		4' ON CENTER		2' ON CENTER		3' ON CENTER		4' ON CENTER		3' ON CENTER		4' ON CENTER		6' ON CENTER	
DISTANCE FROM CEILING	CENTER	MID POINT	CENTER	MID POINT	CENTER	MID POINT	CENTER	MID POINT	CENTER	MID POINT	CENTER	MID POINT	CENTER	MID POINT	CENTER	MID POINT	CENTER	MID POINT
1'	15.9	15.2	12.6	8.5	11.7	4.6	4.6	4.7	3.3	3.2	2.8	2.2	1.5	1.5	1.2	1.1	0.9	0.6
2'	41.5	45.2	31.1	29.4	28.5	14.1	14.1	14.4	9.8	10.5	8	7.3	5	5.1	4	3.8	3.1	2.1
3'	36.1	34.9	23.3	25.2	19.6	18.4	28.3	27.4	18.5	20.1	14.6	15.8	8.7	9.2	6.5	7.6	5	4.3
4'	23.8	24.5	17.3	17.1	12.8	13.4	23.9	25.1	17.9	17.4	12.9	14	14.3	14	10.4	11.3	7.8	7.4
5'	15.7	16.4	12	11.8	9.1	9.3	18.2	19	14.1	13.8	10.8	10.9	13.2	13.3	10.5	10.3	6.9	7.3
6'	10.7	11	8.3	8.5	6.7	6.6	13.4	13.8	10.6	10.9	8.6	8.4	10.9	11.4	9	8.7	5.8	6.3
7'	7.4	7.6	6	6.2	4.9	4.9	9.8	10	8	8.3	6.6	6.6	8.8	9.3	7.4	7.3	5	5.2
8'	5.3	5.4	4.4	4.6	3.7	3.8	7.2	7.4	6.1	6.4	5.1	5.2	7.1	7.4	5.9	6.1	4.3	4.3
9'	3.9	4	3.4	3.5	2.8	2.9	5.5	5.6	4.7	4.9	4	4.2	5.7	5.8	4.8	5	3.6	3.5
10'	2.9	3	2.6	2.7	2.2	2.3	4.2	4.3	3.7	3.8	3.2	3.3	4.5	4.7	3.9	4.1	3	2.9

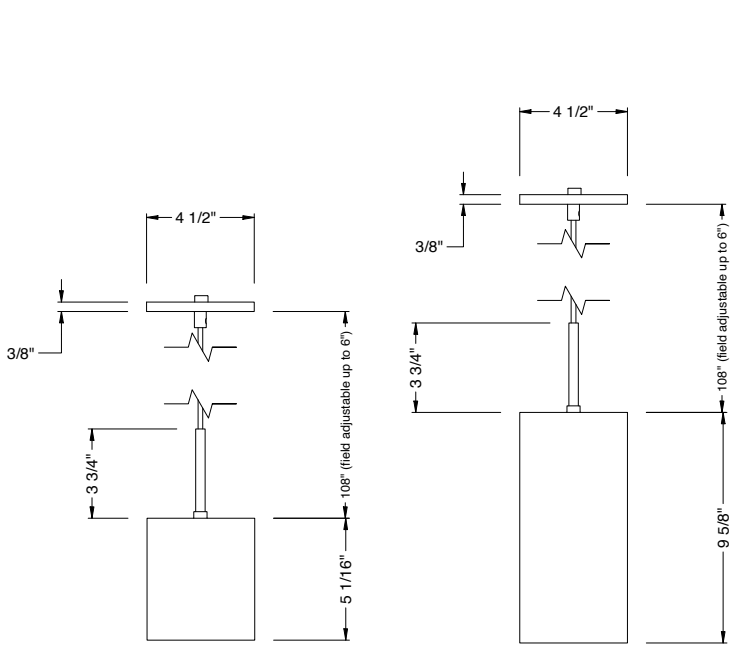
NOTE

1. Performance based on typical reflectance values and room dimensions. IES files available at ledbrands.com

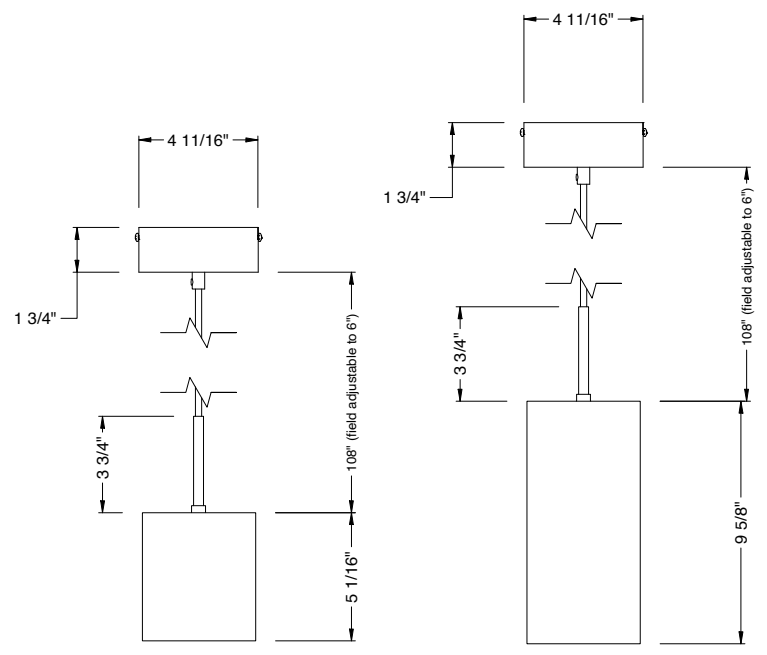
alphabet

PROJECT INFORMATION		
JOB NAME		TYPE
ORDERING CODE		

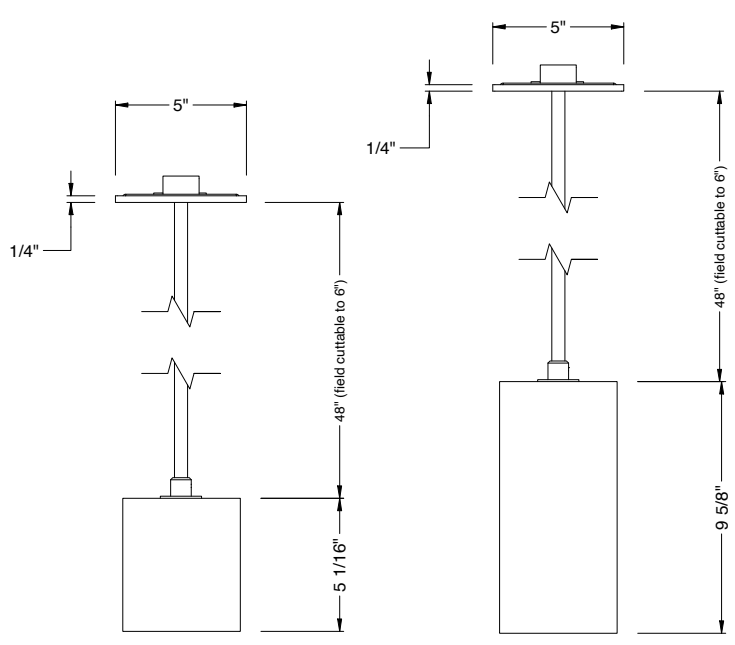
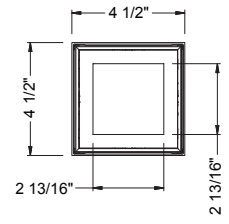
MOUNTING OPTIONS



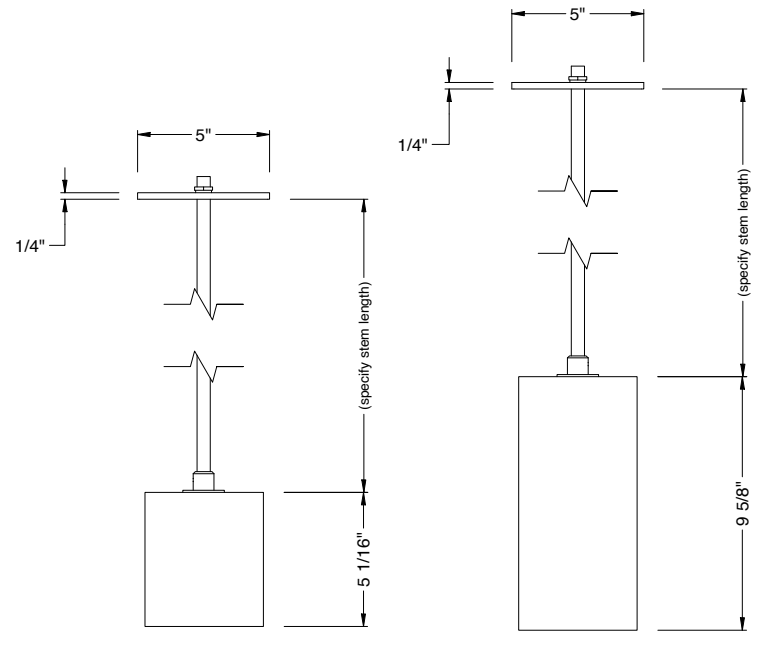
PENDANT
ELV1 / CAS / ND



PENDANT ROUND CANOPY
DIM10 / LUTP



RP SWIVEL
DIM10 / ELV1 / CAS / LUTP / ND

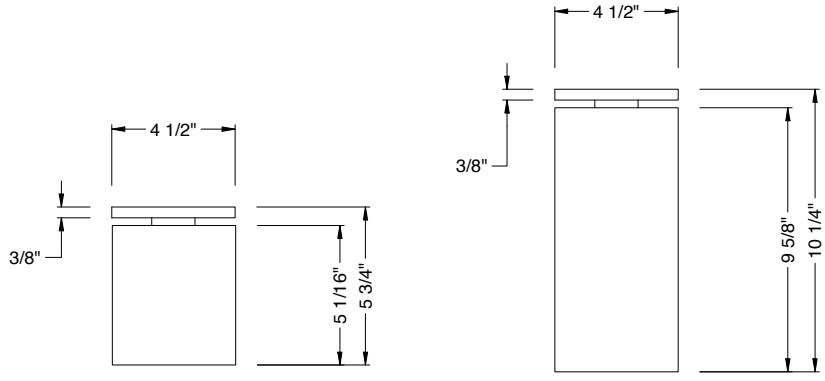


RPF FIXED
DIM10 / ELV1 / CAS / LUTP / ND

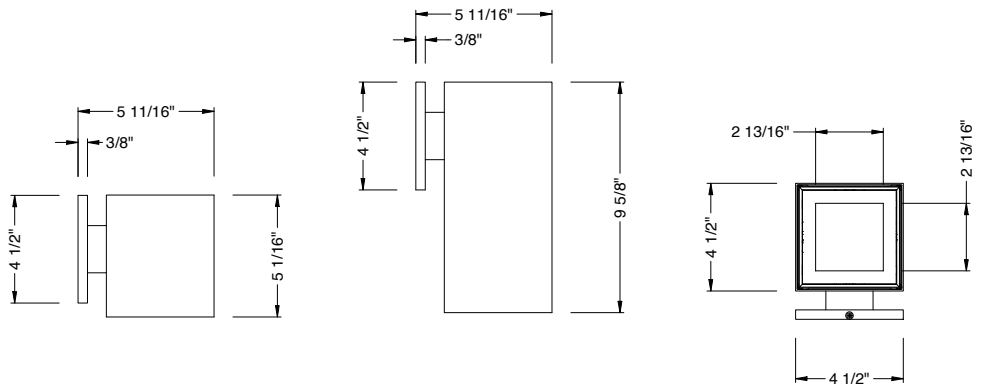
alphabet

PROJECT INFORMATION		
JOB NAME		TYPE
ORDERING CODE		

MOUNTING OPTIONS



SURFACE MOUNT
DIM10 / ELV1 / CAS / LUTP / ND



WALL MOUNT
DIM10 / ELV1 / CAS / LUTP / ND

PROJECT INFORMATION			
JOB NAME		TYPE	
ORDERING CODE			

LOW VOLTAGE OPTIONS

WW BEAM

(Note: Specifications are subject to change without notice)

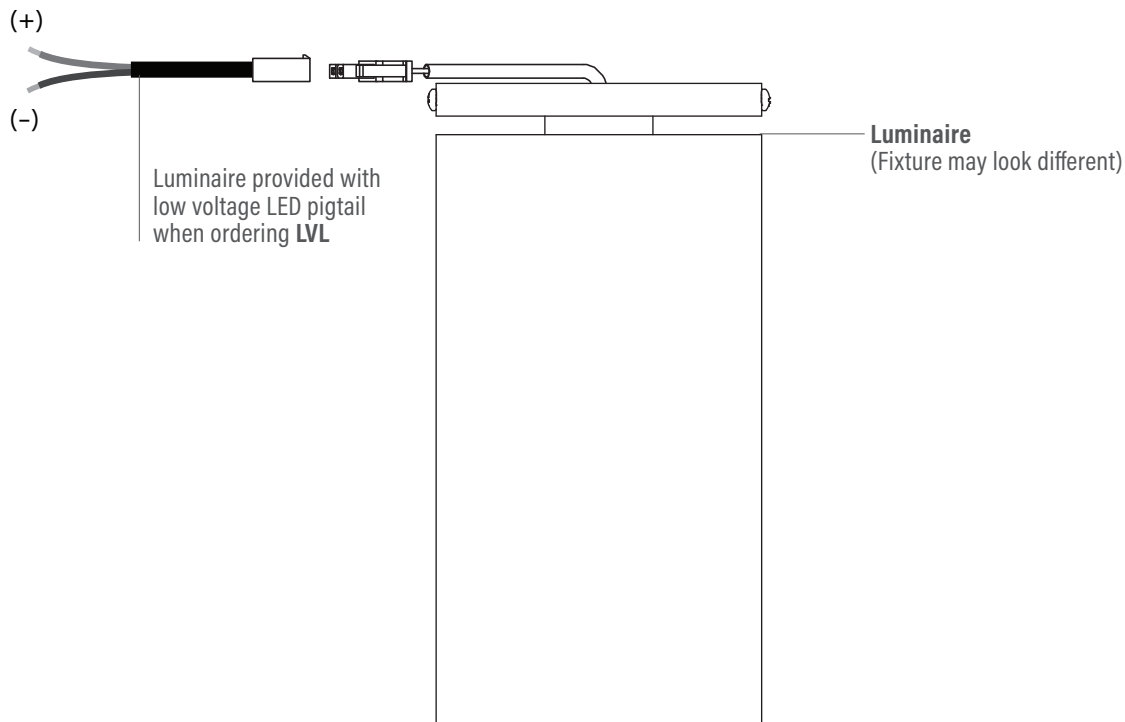
14mm COB PERFORMANCE DATA

LED LIGHT ENGINE	NOMINAL DELIVERED LUMENS	DRIVE CURRENT	LED WATTAGE
10LM	860LM @30K/80CRI	250mA	9W
15LM	1300LM @30K/80CRI	300mA	11W
20LM	1830LM @30K/80CRI	425mA	15.5W
25LM	2220LM @30K/80CRI	525mA	19W
30LM	2700LM @30K/80CRI	650mA	23.5W
35LM	3130LM @30K/80CRI	750mA	27W
10LM	730LM @30K/90/CRI	250mA	9W
15LM	1110LM @30K/90/CRI	300mA	11W
20LM	1550LM @30K/90/CRI	425mA	15.5W
25LM	1880LM @30K/90/CRI	525mA	19W
30LM	2290LM @30K/90/CRI	650mA	23.5W
35LM	2660LM @30K/90/CRI	750mA	27W
Notes	Delivered lumens based on WW optic (see page 2)		

WITH EM BATTERY (REMOTE TEST SWITCH)

NOMINAL LED VOLTAGE: 36VDC

Customer to order CC Remote Driver separately or POE Node by others.



PROJECT INFORMATION		
JOB NAME		TYPE
ORDERING CODE		

BATTERY OPTIONS

EMERGENCY BATTERY

IOTA's ILB battery backups are UL Listed LED emergency drivers that allow the same LED fixture to be used for both normal and emergency operation. In the event of a power failure, the ILB switches to the emergency mode and operates the existing fixture for 90 minutes. The unit contains a battery, charger, and converter circuit in a single can. The constant power design of the ILB maintains the output wattage to the LED array even as the system voltage diminishes. UL 924 Listed for U.S. and Canada. UL 1310 Certified, output class 2 compliant. Includes single-piece TBTS test switch and charge indicator accessory kit. For use with switched and unswitched fixtures, and includes two-wire universal AC input. Meets or exceeds all National Electric Code and Life Safety Code Emergency Lighting requirements. Rated for use in plenum, damp location, recessed type IC, and enclosed and gasketed luminaires.

REMOTE TEST SWITCH

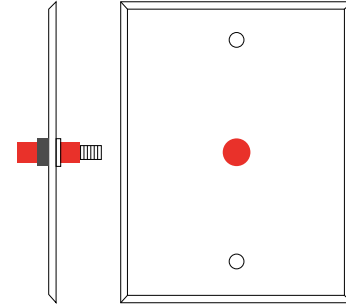
The remote test switch may be mounted adjacent to the LED Fixture by others.

EMERGENCY BATTERY ACCESS

Above ceiling access is recommended for ease of service.

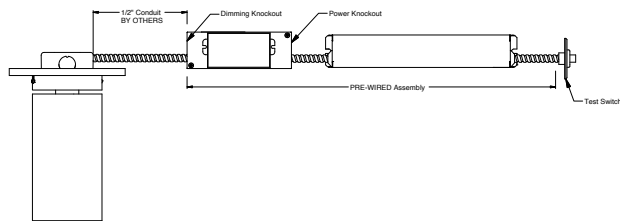
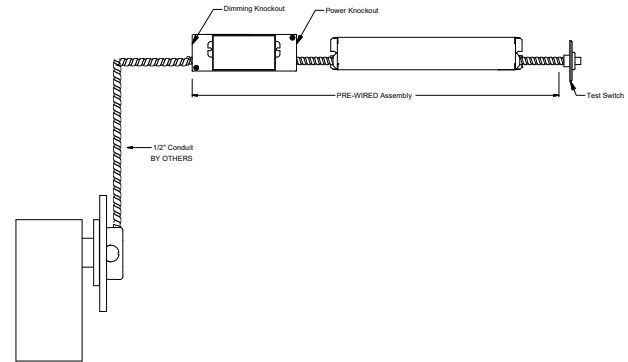
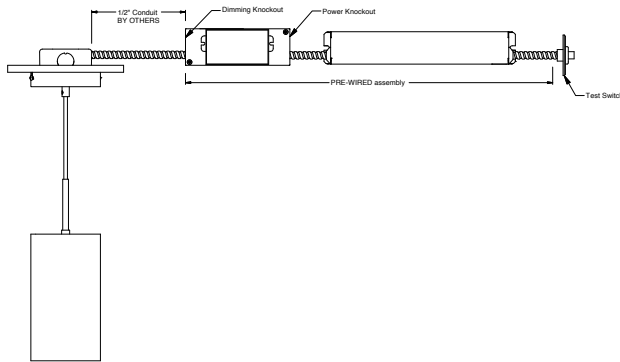
REMOTE LOCATION

Maximum remote mounting distance of the emergency driver shall be 50 feet. Remote location wiring provided by others. Follow all local and national electric/building codes.



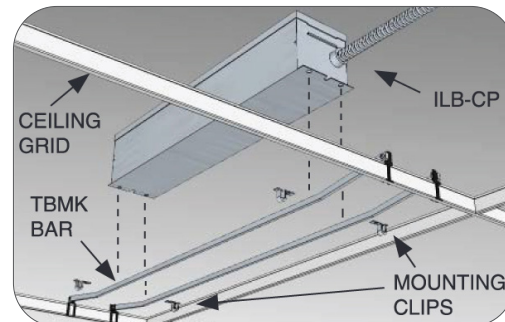
Remote Test Switch

EM MODE OUTPUT (DELIVERED LUMENS)			
LUMEN ORDERING CODE	EM7	EM10	EM12
ALL OPTIONS (10LM TO 35LM)	800LM	1120LM	1350LM
Notes: Based on 30K, 80CRI			



Accessory

76066 Optional T-Grid Mounting Kit¹



1. Can be used with any of the Emergency Battery Backups. Must be ordered as a separate line item.