

# alphabet

## BETA6R UP DOWN

6" Cylinder Standard White



PROJECT INFORMATION		
JOB NAME		TYPE
ORDERING CODE		

### DOWNLIGHT

12° -70° BEAM

(Note: Specifications are subject to change without notice)

LED LIGHT ENGINE	NOMINAL DELIVERED LUMENS	SYSTEM WATTAGE
20LM	1980LM @30K/80CRI	16W
25LM	2460LM @30K/80CRI	20W
30LM	2920LM @30K/80CRI	24W
35LM	3480LM @30K/80CRI	30W
40LM	4030LM @30K/80CRI	35W
45LM	4460LM @30K/80CRI	39W
50LM	5140LM @30K/80CRI	39W
60LM	6100LM @30K/80CRI	49W
70LM	6950LM @30K/80CRI	56W
20LM	1680LM @30K/90CRI	16W
25LM	2090LM @30K/90CRI	20W
30LM	2480LM @30K/90CRI	24W
35LM	2960LM @30K/90CRI	30W
40LM	3430LM @30K/90CRI	35W
45LM	3790LM @30K/90CRI	39W
50LM	4370LM @30K/90CRI	39W
60LM	5190LM @30K/90CRI	49W
70LM	5910LM @30K/90CRI	56W
Notes	Delivered lumens based on 25D optic with no lens, (see page 2)	

### UPLIGHT

8° -70° BEAM

(Note: Specifications are subject to change without notice)

LED LIGHT ENGINE	NOMINAL DELIVERED LUMENS	SYSTEM WATTAGE
10LM	990LM @30K/80CRI	9W
15LM	1485LM @30K/80CRI	12W
20LM	2095LM @30K/80CRI	17W
25LM	2540LM @30K/80CRI	21W
10LM	840LM @30K/90CRI	9W
15LM	1260LM @30K/90CRI	12W
20LM	1780LM @30K/90CRI	17W
25LM	2160LM @30K/90CRI	21W
Notes	Delivered lumens based on 25D optic with clear lens, (see page 2)	

eldoLED  
your standard light fixture



CASAMBI

### FEATURES

- Seamless extrusion with painted finish for clean aesthetics
- Thermally optimized for longevity
- 8° - 70° beam spread
- UGR < 19
- Multiple glare control options, bezel and finishes available

### DIMMING AND CONTROLS

- eldoLED flicker free 0-10V dimming to 1% and 0%
- eldoLED flicker free DALI dimming to 1% and 0%
- DMX dim to zero
- Lutron Hi-lume 1% 3-wire/Ecosystem
- Leading & trailing edge (Triac/ELV) dimming to 1%
- Casambi bluetooth dimming to 1%
- Independent Uplight / Downlight Control

### CONSTRUCTION

- Extruded aluminum housing
- Lexan™ (PC) Optimal connectivity for wireless control signal
- Machined aluminum canopy

### LED

- 90 CRI: SDCM = 2-step MacAdam Ellipse, Lumen Maintenance: L<sub>70</sub> > 66,000 hrs
- 80 CRI: SDCM = 2-step MacAdam Ellipse, Lumen Maintenance: L<sub>70</sub> > 66,000 hrs

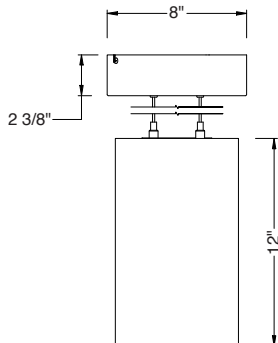
### LISTING

- ULus Listed to UL1598 & UL2108; cUL Listed to CSA C22.2 #250.0
- Suitable for dry and damp locations
- 5 Year Limited warranty

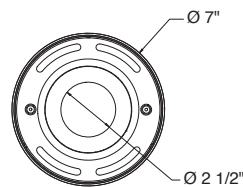
### ELECTRICAL

- 120V-277V, 120 only Triac / ELV
- Power factor ≥ 0.9
- 2kV driver input surge protection
- Remote emergency test switch
- 7W EM Remote 90min battery - Down only

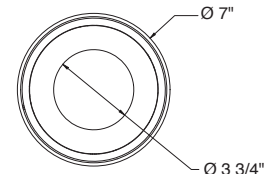
12in BETA 6



UPLIGHT



DOWNLIGHT



# alphabet

PROJECT INFORMATION		
JOB NAME		TYPE
ORDERING CODE		

ORDERING CODE		
<b>SERIES</b>	<b>BETA</b>	cylinder series
<b>TYPE</b>	<b>6RUD</b>	6" Round Up Down
<b>LED</b>	<b>SW</b>	standard white
<b>DOWNLIGHT DELIVERED LUMENS</b>	<b>20LM</b>	1980 lm
	<b>25LM</b>	2460 lm
	<b>30LM</b>	2920 lm
	<b>35LM</b>	3480 lm
	<b>40LM</b>	4030 lm
	<b>45LM</b>	4460 lm
	<b>50LM</b>	5140 lm
	<b>60LM</b>	6100 lm
	<b>70LM<sup>1</sup></b>	6950 lm
<b>UPLIGHT DELIVERED LUMENS</b>	<b>10LM</b>	990 lm
	<b>15LM</b>	1485 lm
	<b>20LM</b>	2095 lm
	<b>25LM</b>	2540 lm
<b>CCT UP &amp; DOWN</b>	<b>27K</b>	2700K
	<b>30K</b>	3000K
	<b>35K</b>	3500K
	<b>40K</b>	4000K
<b>CRI UP &amp; DOWN</b>	<b>80</b>	80 CRI
	<b>90</b>	90 CRI

DOWNLIGHT		
<b>OPTIC &amp; LM MULTIPLIER</b> SEE PAGE 3, 4	<b>20D</b>	20 degrees (0.99)
	<b>25D</b>	25 degrees (1.00)
	<b>35D</b>	35 degrees (0.99)
	<b>60D</b>	60 degrees (1.00)
	<b>70D</b>	70 degrees (0.98)

<b>BEZEL LENS</b> SEE PAGE 3, 4	<b>NL</b>	no lens (1.00)
	<b>CL</b>	clear lens (0.98)
	<b>DL</b>	diffused lens (0.91)
	<b>HCL<sup>2</sup></b>	honeycomb louver (0.85)
	<b>HET</b>	high efficiency textured lens, similar to Solite™ (0.96)
	<b>SBL</b>	smoothing beam lens (0.96)

<b>BEZEL COLOR</b> SEE PAGE 3, 4	<b>BK</b>	black (0.98)
	<b>WH</b>	white (1.00)
	<b>MC</b>	matte chrome (0.99)
	<b>BZ</b>	bronze (0.98)
	<b>WT</b>	wheat (0.99)
	<b>CC<sup>3</sup></b>	custom color, consult factory for details

UPLIGHT		
<b>OPTIC &amp; LM MULTIPLIER</b> SEE PAGE 3, 4	<b>8D</b>	8 degrees (1.00)
	<b>12D</b>	12 degrees (1.00)
	<b>20D</b>	20 degrees (0.99)
	<b>25D</b>	25 degrees (1.00)
	<b>35D</b>	35 degrees (0.99)
	<b>50D</b>	50 degrees (0.99)
	<b>65D</b>	65 degrees (0.99)
<b>BEZEL LENS</b> SEE PAGE 3, 4	<b>CL</b>	clear lens (0.98)
	<b>DL</b>	diffused lens (0.91)
	<b>HET</b>	high efficiency textured lens, similar to Solite™ (0.96)
	<b>SBL</b>	smoothing beam lens (0.96)

ORDERING CODE		
<b>FINISH</b>	<b>BK</b>	black
	<b>WH</b>	white
	<b>MC</b>	matte chrome
	<b>CC<sup>3</sup></b>	custom color, consult factory for details
<b>MOUNTING OPTIONS</b>	<b>PS6</b>	driver integrated canopy with power over suspension, 6ft
	<b>PS8</b>	driver integrated canopy with power over suspension, 8ft
	<b>PS10</b>	driver integrated canopy with power over suspension, 10ft
	<b>PS12</b>	driver integrated canopy with power over suspension, 12ft
<b>VOLTAGE</b>	<b>120</b>	120V
	<b>UNV</b>	120V-277V
<b>DIMMING</b>	<b>DIM10</b>	eldoLED flicker free 0-10V dimming to 1%
	<b>DIM10Z</b>	eldoLED flicker free 0-10V dimming to 0%
	<b>DMXZ</b>	DMX dim to zero
	<b>DALI</b>	eldoLED flicker free DALI 2 dimming to 1%
	<b>DALIZ</b>	eldoLED flicker free DALI 2 dimming to 0%
	<b>LUTP<sup>5</sup></b>	Lutron Hi-lume Premier Ecosystem dimming to 0.1%, Soft-on & Fade-to-Black
	<b>LUT<sup>6</sup></b>	Lutron Hi-lume Ecosystem dimming to 1%, Soft-on & Fade-to-Black
	<b>ELV1<sup>6,7</sup></b>	leading & trailing edge (Triac/ELV) dimming to 1%
<b>CAS</b>	Casambi Bluetooth control with flicker free 1% dimming	
<b>ELECTRICAL OPTIONS</b>	<b>EM7</b>	Remote emergency battery backup, 90 minutes at 7 watts to LED, Remote TS

YOUR COMPLETED ORDERING CODE	
Follow the steps to specify your fixture, example:	
<b>BETA - 6RUD - SW - 50LM - 25LM - 30K - 90 - 25D - CL - WH - 25D - CL - WH - PS6 - UNV - DIM10 - EM7</b>	

## NOTES

- 70LM not available in wall mount.
- HCL not available with lens. Multiplier: Delivered Lumens (0.78) / Beam Spread (0.80)
- Custom set up fee plus minimum quantity required per color.
- 8D/12D not available in 25LM.
- LUTP not available in 25LM/30LM/35LM/40LM/45LM.
- ELV1/LTE/LUT not available in 40LM/50LM/60LM/70LM.
- ELV1 available in 120V.

\* EldoLED and DMX logarithmic dimming curve as standard. For linear dimming curve, add "LIN" after dimming code, i.e., DIM10LIN.

# alphabet

PROJECT INFORMATION		
JOB NAME		TYPE
ORDERING CODE		

## BEZEL OPTIONS DOWNLIGHT

### BEZEL COLORS

DOWN

Bezel Lens  
Bezel



WH



MC



BK



BZ



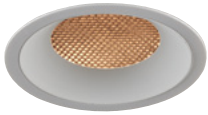
WT

## OPTICAL OPTIONS

- UGR calculation based on CIE 117-1995; room size: 4H X 8H, reflectance: 70/50/20;
- UGR calculation based on 30LM fixtures, unless otherwise noted.
- UGR Calculations not available in UP light

### ACCESSORY

\*Honeycomb Louver



OPTIC	BEAM ANGLE	UGR
12D	13	11.7
20D	21	12
35D	32	12.4
70D	67	17

\*Not offered in UP light

### NL

\*No Lens



OPTIC	BEAM ANGLE	UGR
12D	13	15.1
20D	21	15.2
35D	35	15.4
70D	72	20.1

\*Not offered in UP light

### CL

Clear Lens



OPTIC	BEAM ANGLE	UGR
12D	13	14.8
20D	21	14.9
35D	35	15.2
70D	72	20

### DL

Diffused Lens



OPTIC	BEAM ANGLE	UGR
12D	34	18.1
20D	40	18.5
35D	48	19.3
70D	74	23.1

### HET

High Efficiency Textured Lens



OPTIC	BEAM ANGLE	UGR
12D	15	15
20D	25	15.2
35D	36	15.9
70D	70	20.7

### SBL

Smoothing Beam Lens



OPTIC	BEAM ANGLE	UGR
12D	14	14.5
20D	22	14.7
35D	35	15.2
70D	72	20.1

# alphabet

PROJECT INFORMATION		
JOB NAME		TYPE
ORDERING CODE		

## PHOTOMETRIC DATA

MULTIPLIERS		
	80CRI	90CRI
2700K	0.96	0.81
3000K	1	0.85
3500K	1.03	0.88
4000K	1.06	0.91
FC Formula = CBCP / Distance <sup>2</sup>		

25LM-UP   70LM-DOWN	
35D 35° CLEAR LENS	
WATTS: 21	LPW: 110.3
LUMENS: 2316	CCT: 3000K
INTENSITY	
DEGREE	CANDELA
45	10
35	485
25	1468
15	3177
5	4784
0	5134

WATTS: 55.9	LPW: 107.7
LUMENS: 6018	CCT: 3000K
INTENSITY	
DEGREE	CANDELA
0	12262
5	11911
15	7923
25	3502
35	1674
45	27

25LM-UP   50LM-DOWN	
35D 35° CLEAR LENS	
WATTS: 21	LPW: 110.3
LUMENS: 2316	CCT: 3000K
INTENSITY	
DEGREE	CANDELA
45	10
35	485
25	1468
15	3177
5	4784
0	5134

WATTS: 39	LPW: 114.1
LUMENS: 4451	CCT: 3000K
INTENSITY	
DEGREE	CANDELA
0	9069
5	8809
15	5860
25	2590
35	1238
45	20

20LM-UP   40LM-DOWN	
35D 35° CLEAR LENS	
WATTS: 17.2	LPW: 111
LUMENS: 1910	CCT: 3000K
INTENSITY	
DEGREE	CANDELA
45	8
35	400
25	1211
15	2621
5	3946
0	4235

WATTS: 34.6	LPW: 106.1
LUMENS: 3672	CCT: 3000K
INTENSITY	
DEGREE	CANDELA
0	7696
5	7682
15	4880
25	1953
35	1128
45	50

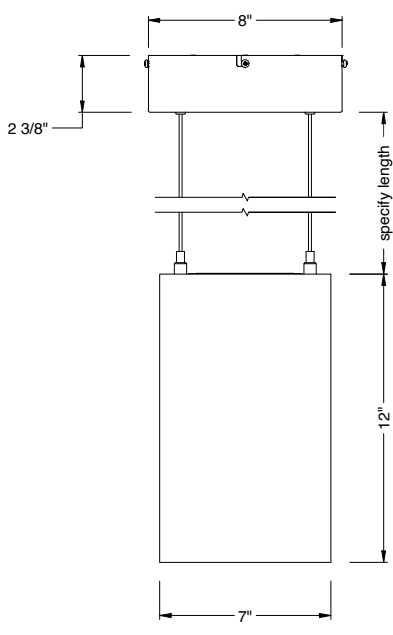
15LM-UP   30LM-DOWN	
35D 35° CLEAR LENS	
WATTS: 12.3	LPW: 110.4
LUMENS: 1358	CCT: 3000K
INTENSITY	
DEGREE	CANDELA
45	6
35	285
25	861
15	1864
5	2806
0	3012

WATTS: 23.8	LPW: 111.8
LUMENS: 2660	CCT: 3000K
INTENSITY	
DEGREE	CANDELA
0	5576
5	5566
15	3536
25	1415
35	817
45	36

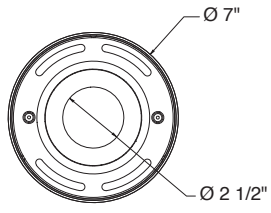
# alphabet

PROJECT INFORMATION		
JOB NAME		TYPE
ORDERING CODE		

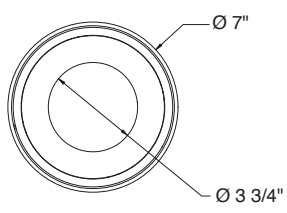
## MOUNTING OPTIONS



DIM10 / ELV1 / LUTP / DALI / CAS



UPLIGHT



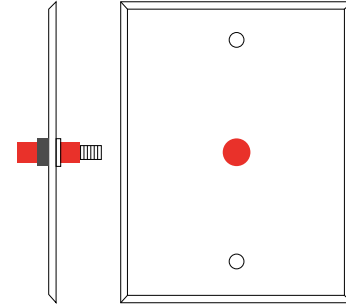
DOWNLIGHT

PROJECT INFORMATION		
JOB NAME		TYPE
ORDERING CODE		

## BATTERY OPTIONS

### EMERGENCY BATTERY

IOTA's ILB Battery Backups are UL Listed LED emergency drivers that allow the same LED fixture to be used for both normal and emergency operation. In the event of a power failure, the ILB switches to the emergency mode and operates the existing fixture for 90 minutes. The unit contains a battery, charger, and converter circuit in a single can. The Constant Power design of the ILB maintains the output wattage to the LED array even as the system voltage diminishes. UL 924 Listed for U.S. and Canada. UL 1310 Certified, Output Class 2 Compliant. Includes single-piece TBTS test switch and charge indicator accessory kit. For use with switched and unswitched fixtures, and includes Two-wire universal AC input. Meets or exceeds all National Electric Code and Life Safety Code Emergency Lighting Requirements.



Test Button

EM MODE OUTPUT (DELIVERED LUMENS) - DOWNLIGHT ONLY	
LUMEN ORDERING CODE	EM7
ALL OPTIONS	920LM
Notes: Based on 30K, 80CRI - Downlight only	

### INTEGRATED EM BATTERY

