

# alphabet

## BETA4R UP DOWN

4" Cylinder Warm Dim



PROJECT INFORMATION		
JOB NAME		TYPE
ORDERING CODE		

### DOWNLIGHT

12° - 65° BEAM		
(Note: Specifications are subject to change without notice)		
LED LIGHT ENGINE	NOMINAL DELIVERED LUMENS	SYSTEM WATTAGE
10LM	950LM @30K/97CRI	12W
15LM	1375LM @30K/97CRI	17W
20LM	1970LM @30K/97CRI	27W
Notes	Delivered lumens based on 20D optic with SBL lens (see page 2)	

### UPLIGHT

12° - 65° BEAM		
(Note: Specifications are subject to change without notice)		
LED LIGHT ENGINE	NOMINAL DELIVERED LUMENS	SYSTEM WATTAGE
10LM	950LM @30K/97CRI	12W
15LM	1375LM @30K/97CRI	17W
20LM	1970LM @30K/97CRI	27W
Notes	Delivered lumens based on 20D optic with SBL lens (see page 2)	



CASAMBI

### FEATURES

- Seamless extrusion with painted finish for clean aesthetics
- Thermally optimized for longevity
- 12° - 65° beam spread
- UGR < 19
- Multiple glare control options, bezel and finishes available

### DIMMING AND CONTROLS

- eldoLED flicker free 0-10V dimming to 0% and 1%
- eldoLED flicker free DALI dimming to 0% and 1%
- Lutron Hi-lumen 2-Wire (Triac and Eco System) dimming
- Leading & trailing edge (Triac/ELV) dimming to 1%
- Casambi bluetooth dimming to 1.0%
- Independent Uplight / Downlight Control

### CONSTRUCTION

- Extruded aluminum housing
- Lexan™ (PC) Optimal connectivity for wireless control signal
- Machined aluminum canopy

### LED

- Luminus Dim-to-warm COB: 97 CRI; SDCM = 3-step MacAdam Ellipse; Lumen Maintenance: L<sub>70</sub>> 54,000 hrs

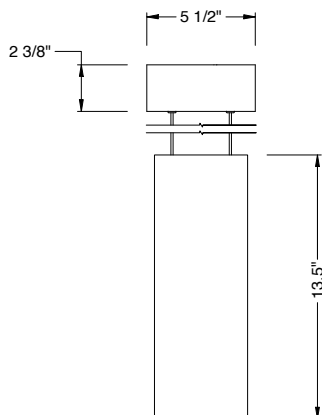
### LISTING

- ULus Listed to UL1598 & UL2108; cUL Listed to CSA C22.2 #250.0
- Suitable for dry and damp locations
- 5 Year Limited warranty

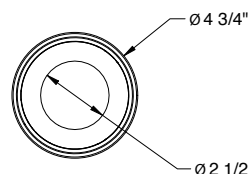
### ELECTRICAL

- 120V-277V, 120 only Triac / ELV
- Power factor ≥ 0.9
- 2kV driver input surge protection
- remote emergency test switch
- 7W EM 90min battery - Down only

### FIXTURE HEIGHT



### UP/DOWN LIGHT



# alphabet

PROJECT INFORMATION		
JOB NAME		TYPE
ORDERING CODE		

ORDERING CODE		
<b>SERIES</b>	<b>BETA</b>	cylinder series
<b>TYPE</b>	<b>4RUD</b>	4" Round Up Down
<b>LED</b>	<b>WD</b>	warm dim (Luminus)
<b>DOWNLIGHT DELIVERED LUMENS</b>	<b>10LM</b>	950 lm
	<b>15LM</b>	1375 lm
	<b>20LM</b>	1970 lm
<b>UPLIGHT DELIVERED LUMENS</b>	<b>10LM</b>	950 lm
	<b>15LM</b>	1375 lm
	<b>20LM</b>	1970 lm
<b>CCT UP &amp; DOWN</b>	<b>3018</b>	3000K, dim to 1800K
<b>CRI UP &amp; DOWN</b>	<b>97</b>	97 CRI
DOWNLIGHT		
<b>OPTIC &amp; LM MULTIPLIER</b> SEE PAGE 3, 4	<b>12D<sup>1</sup></b>	12 degrees (1.00)
	<b>15D</b>	15 degrees (1.00)
	<b>20D</b>	20 degrees (0.99)
	<b>25D</b>	25 degrees (1.00)
	<b>35D</b>	35 degrees (0.99)
	<b>40D</b>	40 degrees (0.99)
	<b>55D</b>	55 degrees (0.99)
	<b>65D</b>	65 degrees (0.99)
<b>BEZEL LENS</b> SEE PAGE 3, 4	<b>NL</b>	no lens (1.00)
	<b>CL</b>	clear lens (0.98)
	<b>DL</b>	diffused lens (0.91)
	<b>HCL<sup>2</sup></b>	honeycomb louver (0.85)
	<b>HET</b>	high efficiency textured lens, similar to Solite™ (0.96)
	<b>SBL</b>	smoothing beam lens (0.96)
<b>BEZEL COLOR</b> SEE PAGE 3, 4	<b>BK</b>	black (0.98)
	<b>WH</b>	white (1.00)
	<b>MC</b>	matte chrome (0.99)
	<b>BZ</b>	bronze (0.98)
	<b>WT</b>	wheat (0.99)
	<b>CC<sup>3</sup></b>	custom color, consult factory for details
UPLIGHT		
<b>OPTIC &amp; LM MULTIPLIER</b> SEE PAGE 3, 4	<b>12D<sup>1</sup></b>	12 degrees (1.00)
	<b>15D</b>	15 degrees (1.00)
	<b>20D</b>	20 degrees (0.99)
	<b>25D</b>	25 degrees (1.00)
	<b>35D</b>	35 degrees (0.99)
	<b>40D</b>	40 degrees (0.99)
	<b>55D</b>	55 degrees (0.99)
	<b>65D</b>	65 degrees (0.99)
<b>BEZEL LENS</b> SEE PAGE 3, 4	<b>CL</b>	clear lens (0.98)
	<b>DL</b>	diffused lens (0.91)
	<b>HCL<sup>2</sup></b>	honeycomb louver (0.85)
	<b>HET</b>	high efficiency textured lens, similar to Solite™ (0.96)
	<b>SBL</b>	smoothing beam lens (0.96)

ORDERING CODE		
<b>FINISH</b>	<b>BK</b>	black
	<b>WH</b>	white
	<b>MC</b>	matte chrome
	<b>CC<sup>3</sup></b>	custom color, consult factory for details
<b>MOUNTING OPTIONS</b>	<b>PS6</b>	driver integrated canopy with power over suspension, 6ft
	<b>PS8</b>	driver integrated canopy with power over suspension, 8ft
	<b>PS10</b> <b>PS12</b>	driver integrated canopy with power over suspension, 10ft driver integrated canopy with power over suspension, 12ft
<b>VOLTAGE</b>	<b>120</b>	120V
	<b>UNV</b>	120V-277V
<b>DIMMING</b>	<b>DIM10</b>	eldoLED flicker free 0-10V dimming to 1%
	<b>DIM10Z</b>	eldoLED flicker free 0-10V dimming to 0%
	<b>DALI</b>	eldoLED flicker free DALI 2 dimming to 1%
	<b>DALIZ</b>	eldoLED flicker free DALI 2 dimming to 0%
	<b>LUTP<sup>4</sup></b>	Lutron Hi-lume Premier Ecosystem dimming to 0.1%, Soft-on & Fade-to-Black
	<b>ELV1<sup>5</sup></b>	leading & trailing edge (Triac/ELV) dimming to 1%
	<b>CAS</b>	Casambi Bluetooth control with flicker free 1% dimming
<b>ELECTRICAL OPTIONS</b>	<b>EM7</b>	remote emergency battery backup, 90 minutes at 7 watts to LED

YOUR COMPLETED ORDERING CODE	
Follow the steps to specify your fixture, example:	
<b>BETA - 4RUD - WD - 20LM - 20LM - 3018 - 97 - 25D - CL - WH - 25D - CL - WH - PS6 - UNV - DIM10</b>	

## NOTES

- 12D available in 10LM.
- HCL not available with lens. Multiplier: Delivered Lumens (0.78) / Beam Spread (0.80).
- Custom set up fee plus minimum quantity required per color.
- LUTP not available in 10LM.
- ELV1 available in 120V.

\* EldoLED uses logarithmic dimming curve as standard. For linear dimming curve, add "LIN" after dimming code, i.e. DIM10LIN.

\* Values shown are for reference only. Actual CCT may vary.

\* Warm Dim CCT values at X% are for reference.

# alphabet

PROJECT INFORMATION		
JOB NAME		TYPE
ORDERING CODE		

## BEZEL OPTIONS DOWNLIGHT

### BEZEL COLORS

DOWN

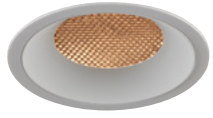


## OPTICAL OPTIONS

- UGR calculation based on CIE 117-1995; room size: 4H X 8H, reflectance: 70/50/20;
- UGR calculation based on 15LM fixtures, unless otherwise noted.

### REFLECTOR OPTIC ACCESSORY

\*Honeycomb Louver



OPTIC	BEAM ANGLE	UGR
12D	11	8.9
15D	15	11.4
20D	20	12
35D	31	12.8
55D	49	13.8
65D	55	16.1

\*Not offered in UP light

### NL

No Lens



OPTIC	BEAM ANGLE	UGR
12D	12	12.6
15D	16	13.5
20D	22	13.7
35D	35	15
55D	55	16.2
65D	68	19.3

\*Not offered in UP light

### CL

Clear Lens



OPTIC	BEAM ANGLE	UGR
12D	12	12.4
15D	16	13.4
20D	22	13.5
35D	35	14.8
55D	55	16
65D	68	19

### DL

Diffused Lens



OPTIC	BEAM ANGLE	UGR
12D	12	12.6
15D	16	13.5
20D	22	13.7
35D	35	15
55D	55	16.2
65D	68	19.3

### HET

High Efficiency Textured Lens



OPTIC	BEAM ANGLE	UGR
12D	17	15.9
15D	21	13.6
20D	26	13.8
35D	37	16
55D	56	14.2
65D	64	20.2

### SBL

Smoothing Beam Lens



OPTIC	BEAM ANGLE	UGR
12D	14	12
15D	17	13
20D	23	13.2
35D	35	15.2
55D	56	16.5
65D	66	19.7

# alphabet

PROJECT INFORMATION		
JOB NAME		TYPE
ORDERING CODE		

## PHOTOMETRIC DATA

20LM-UP   20LM-DOWN	
15D-SBL 17° SBL LENS	
WATTS: 26.1	LPW: 75.1
LUMENS: 1959	CCT: 3000K
INTENSITY	
DEGREE	CANDELA
45	35
35	340
25	741
15	1963
5	9605
0	11748
<p>Diagram showing beam diameter (ft) and illuminance at center (fc) for various throw distances (ft) for the 20LM-UP   20LM-DOWN fixture. The beam diameter increases from 0.6 ft at 2 ft throw to 4.3 ft at 14 ft throw. Illuminance at center decreases from 2937 fc at 2 ft throw to 60 fc at 14 ft throw.</p>	
WATTS: 26.1	LPW: 75.1
LUMENS: 1959	CCT: 3000K
INTENSITY	
DEGREE	CANDELA
0	11748
5	9605
15	1963
25	741
35	340
45	35

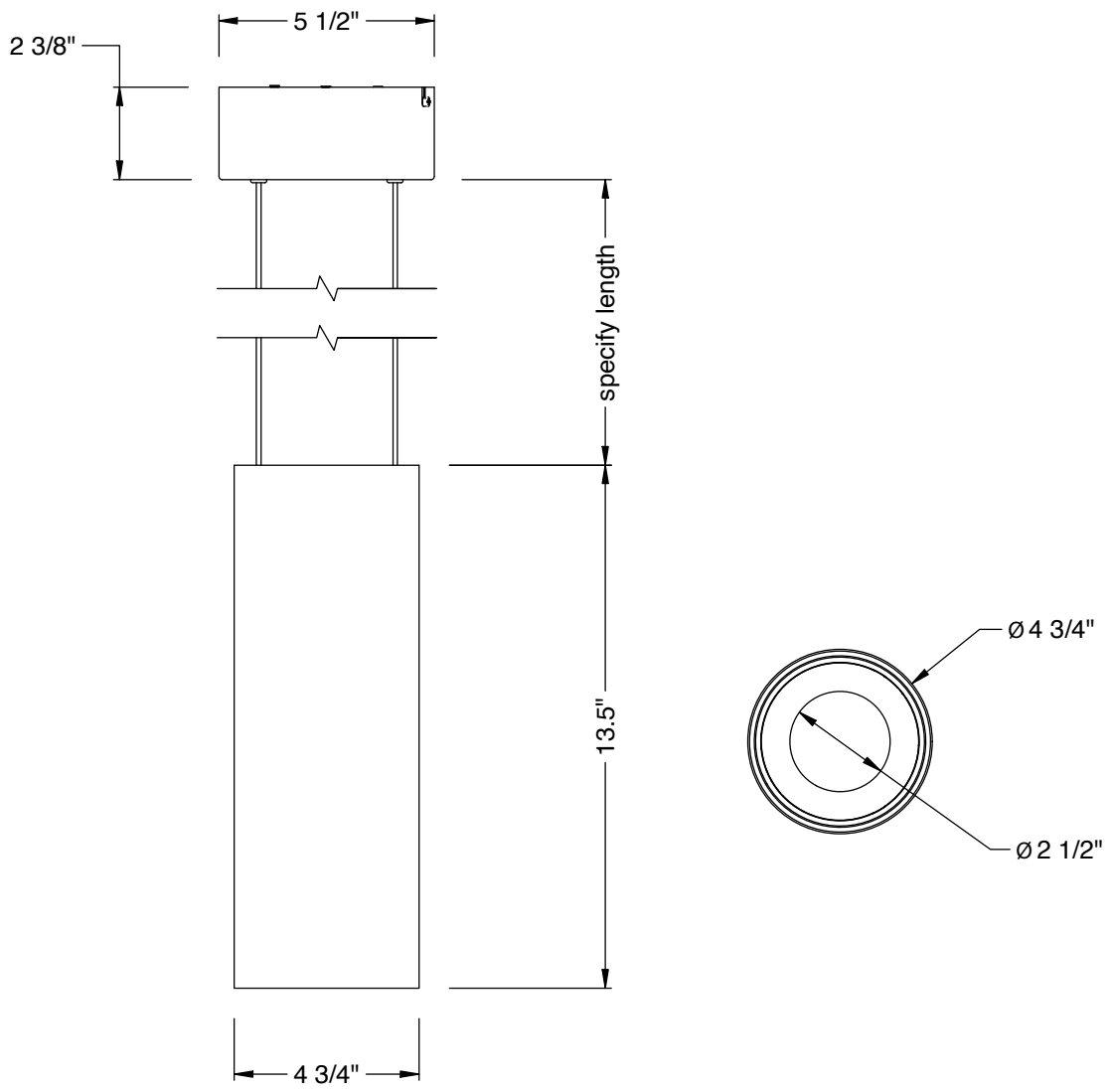
15LM-UP   15LM-DOWN	
20D-SBL 23° SBL LENS	
WATTS: 17	LPW: 81
LUMENS: 1377	CCT: 3000K
INTENSITY	
DEGREE	CANDELA
45	24
35	239
25	589
15	1780
5	4838
0	5605
<p>Diagram showing beam diameter (ft) and illuminance at center (fc) for various throw distances (ft) for the 15LM-UP   15LM-DOWN fixture. The beam diameter increases from 0.8 ft at 2 ft throw to 5.6 ft at 14 ft throw. Illuminance at center decreases from 1401 fc at 2 ft throw to 29 fc at 14 ft throw.</p>	
WATTS: 17	LPW: 81
LUMENS: 1377	CCT: 3000K
INTENSITY	
DEGREE	CANDELA
0	5605
5	4838
15	1780
25	589
35	239
45	24

10LM-UP   10LM-DOWN	
35D-SBL 35° SBL LENS	
WATTS: 11.8	LPW: 80.4
LUMENS: 949	CCT: 3000K
INTENSITY	
DEGREE	CANDELA
45	25
35	221
25	586
15	1207
5	1885
0	2005
<p>Diagram showing beam diameter (ft) and illuminance at center (fc) for various throw distances (ft) for the 10LM-UP   10LM-DOWN fixture. The beam diameter increases from 1.3 ft at 2 ft throw to 8.9 ft at 14 ft throw. Illuminance at center decreases from 501 fc at 2 ft throw to 10 fc at 14 ft throw.</p>	
WATTS: 11.8	LPW: 80.4
LUMENS: 949	CCT: 3000K
INTENSITY	
DEGREE	CANDELA
0	2005
5	1885
15	1207
25	586
35	221
45	25

# alphabet

PROJECT INFORMATION		
JOB NAME		TYPE
ORDERING CODE		

## MOUNTING OPTIONS



DIM10 / ELV1 / LUTP / DALI / CAS

PROJECT INFORMATION		
JOB NAME		TYPE
ORDERING CODE		

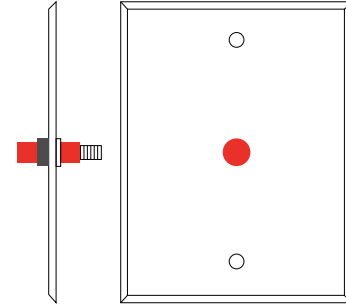
## BATTERY OPTIONS

### EMERGENCY BATTERY

IOTA's ILB Battery Backups are UL Listed LED emergency drivers that allow the same LED fixture to be used for both normal and emergency operation. In the event of a power failure, the ILB switches to the emergency mode and operates the existing fixture for 90 minutes. The unit contains a battery, charger, and converter circuit in a single can. The Constant Power design of the ILB maintains the output wattage to the LED array even as the system voltage diminishes. UL 924 Listed for U.S. and Canada. UL 1310 Certified, Output Class 2 Compliant. Includes single-piece TBTS test switch and charge indicator accessory kit. For use with switched and unswitched fixtures, and includes Two-wire universal AC input. Meets or exceeds all National Electric Code and Life Safety Code Emergency Lighting Requirements. Rated for use in Plenum, Damp Location, Recessed Type IC, and Enclosed and Gasketed Luminaires.

### REMOTE TEST SWITCH

The Remote Test Switch may be mounted adjacent to the LED Fixture by others.



Remote Test Switch

### EMERGENCY BATTERY ACCESS

Above ceiling access is recommended for ease of service, but LED Fixture Sizes of 4" and Larger are capable of below ceiling access. IC/ICAT/CP Box and ITS option require an access panel in the ceiling (or other form of access) adjacent to the installation location of the Emergency Battery.

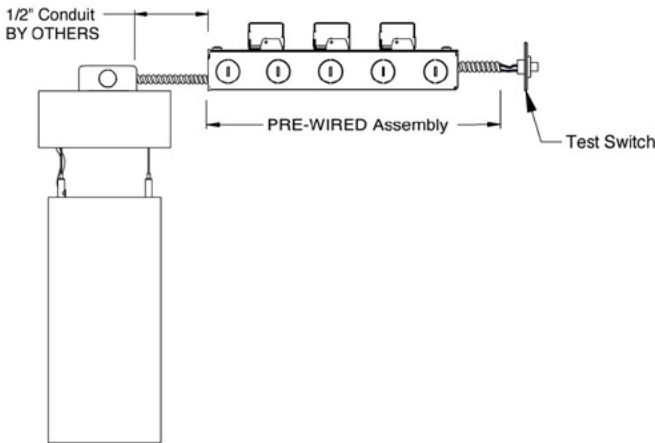
### REMOTE LOCATION

Maximum remote mounting distance of the emergency driver shall be 50 feet. Remote location wiring provided by others. Follow all Local and National Electric/ Building Codes.

### EM MODE OUTPUT (DELIVERED LUMENS) - DOWNLIGHT ONLY

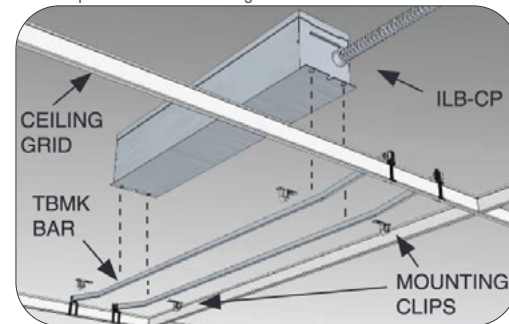
LUMEN ORDERING CODE	EM7
ALL OPTIONS (10LM TO 20LM)	620LM
Notes: Based on 30K, 97CRI - Downlight only	

### REMOTE EM BATTERY



### Accessory

#### 76066 Optional T-Grid Mounting Kit<sup>1</sup>



1. Can be used with any of the Emergency Battery Backups. Must be ordered as a separate line item.