

Light efficiency:

99 Lumen/Watt

Light quality:

CRI: 83.1

Color temperature:

2962 K

Output: 3867 lm

Peak: 2386 cd

Power: 39.0 W

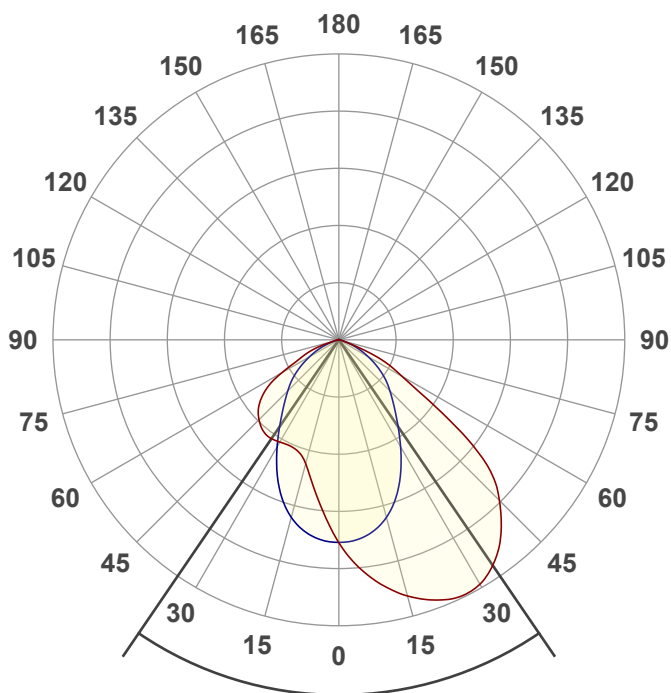
PF: 0.98



BETA-6R-SW-40LM-30K-80-WW-WH-WH

Date and time:

8/7/2024 3:50:26 PM



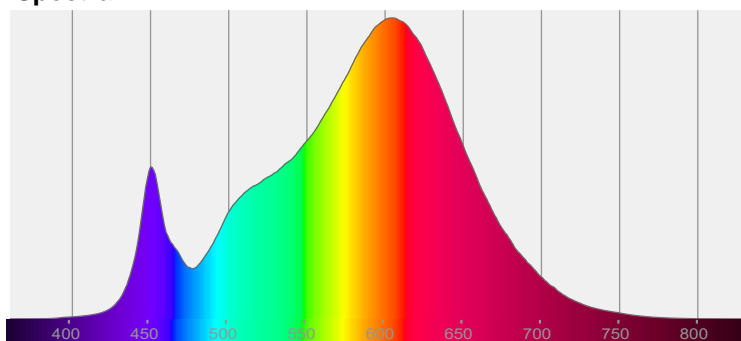
Beam angle

68.6°

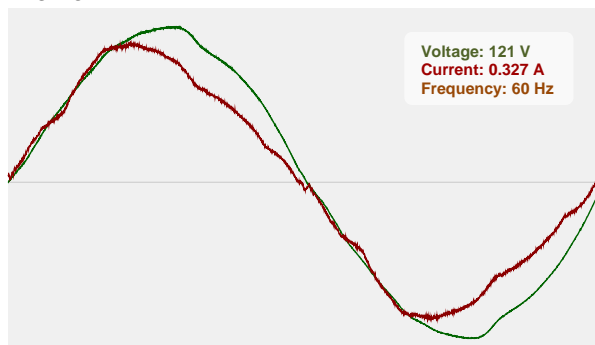


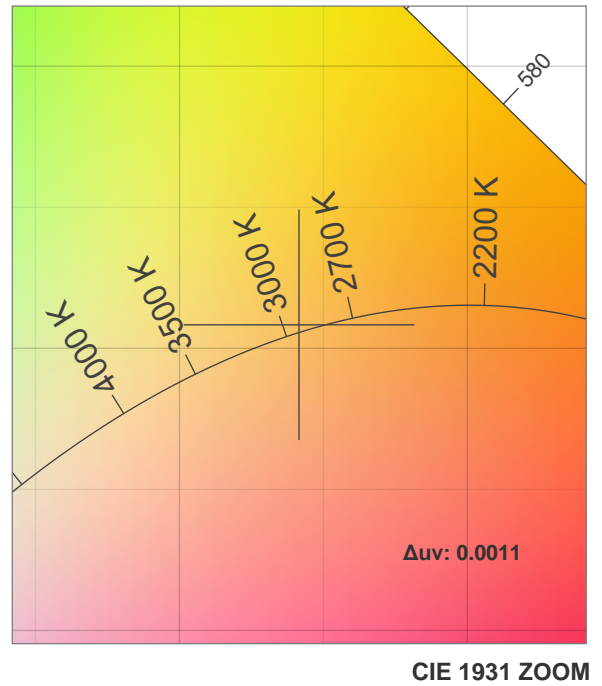
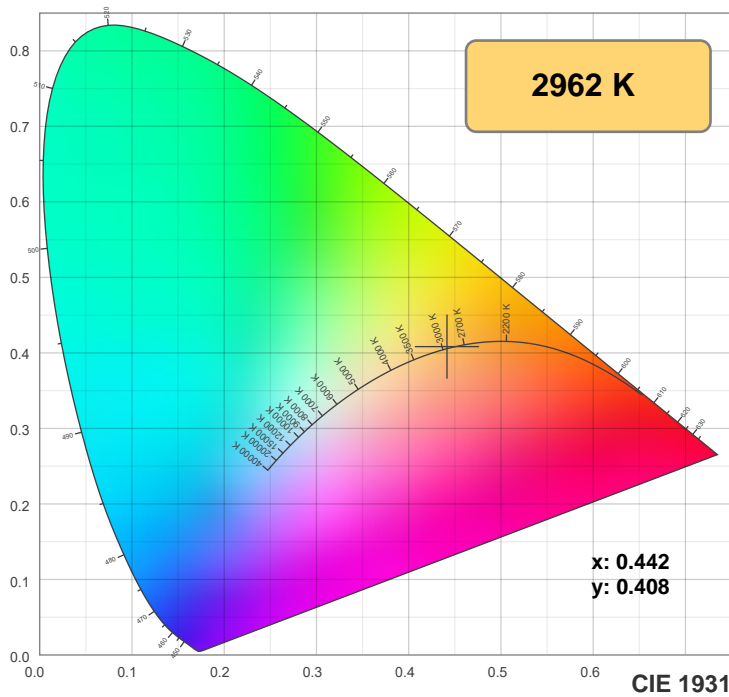
CIE 1931
x: 0.442
y: 0.408

Spectra

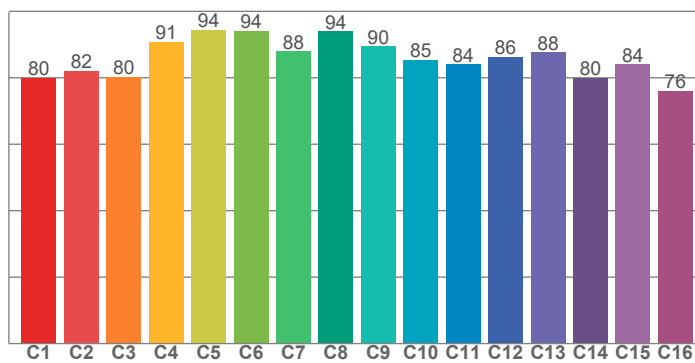


Power

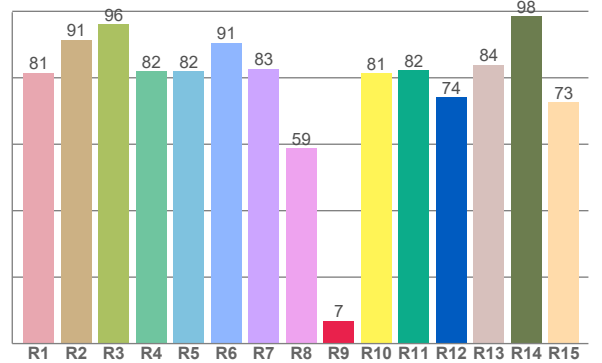




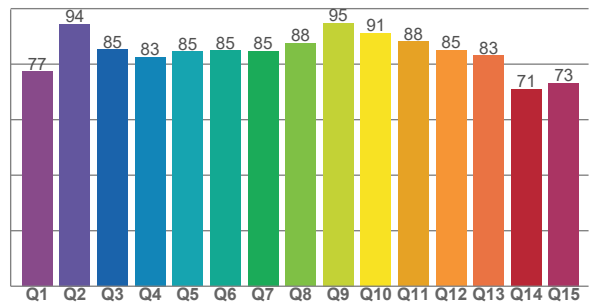
TM30: 85.9



CRI: 83.1 (R1-R8)



CQS: 83.0



CRI R values, only R1-R8 are used to calculate final CRI value

R1	R2	R3	R4	R5	R6	R7	R8	R9	R10	R11	R12	R13	R14	R15
81.5	91.5	96.2	81.9	82.0	90.5	82.8	58.8	6.9	81.4	82.2	74.1	83.9	98.5	72.7

TM30 C values, 16 binned values out of total of 99 C values

C1	C2	C3	C4	C5	C6	C7	C8	C9	C10	C11	C12	C13	C14	C15	C16
80.0	82.1	80.3	90.7	94.4	94.2	88.0	94.0	89.5	85.4	84.1	86.3	87.6	79.9	84.0	76.1

CQS Q values

Q1	Q2	Q3	Q4	Q5	Q6	Q7	Q8	Q9	Q10	Q11	Q12	Q13	Q14	Q15
77.4	94.5	85.3	82.6	84.6	84.9	84.7	87.5	94.8	91.3	88.1	85.0	83.1	71.0	73.2

Color parameters

Color temperature	Color rendering index	Red component	Color fidelity	Color gamut	Color quality scale	Color coordinate cie 1931	Color coordinate cie 1931	Color coordinate	Color coordinate	Color deviation from black body
CCT	CRI	CRI R9	TM30 Rf	TM30 Rg	CQS	x	y	u	v	Δuv
2962 K	83.1	6.9	85.9	95.4	83.0	0.442	0.408	0.252	0.349	0.0011

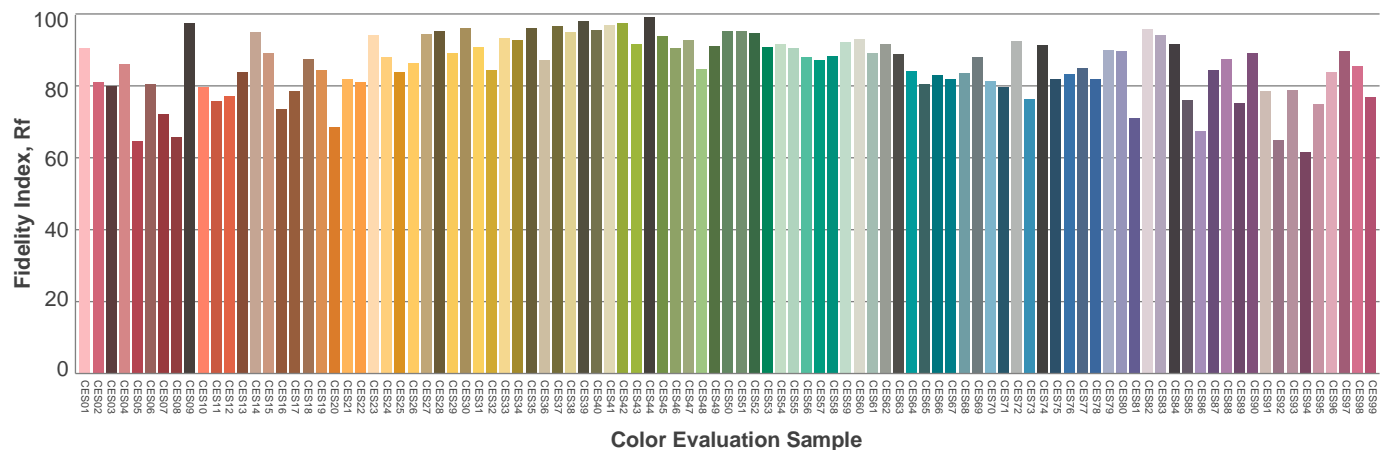
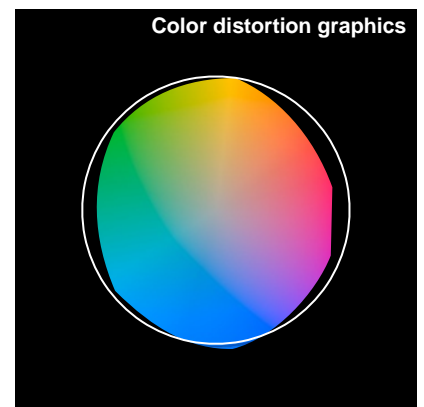
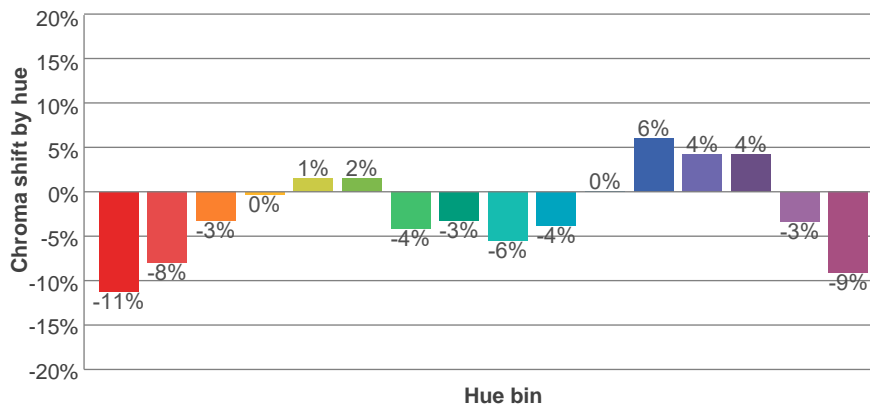
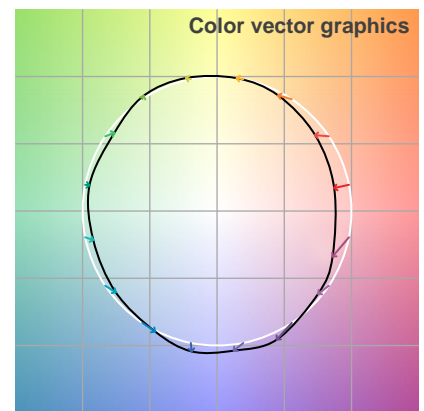
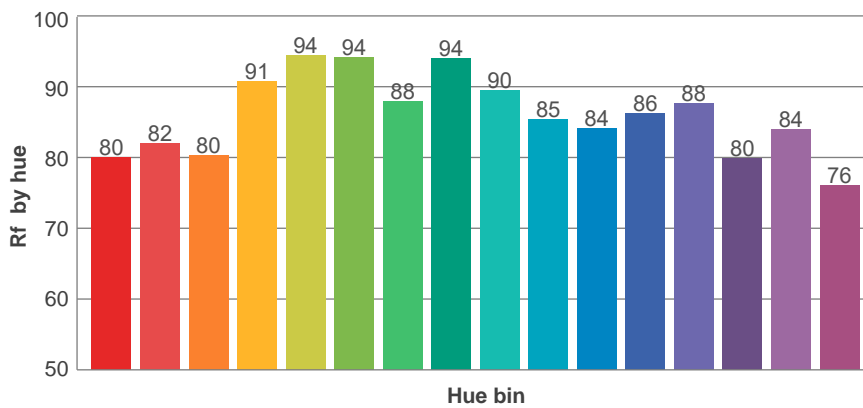
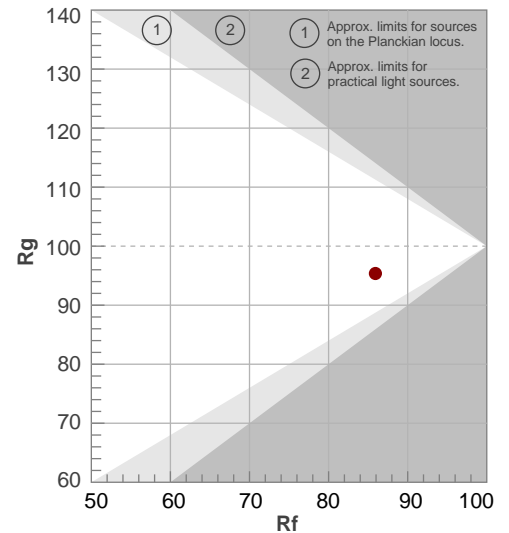
Rf 85.9

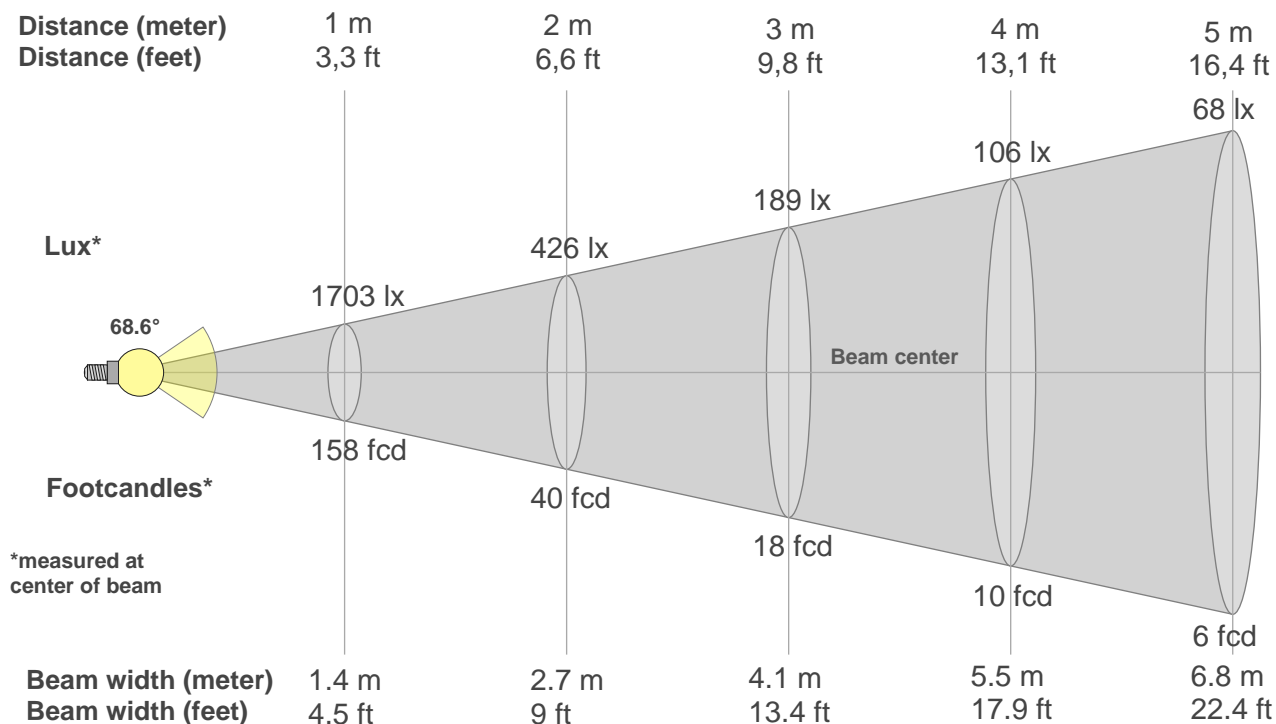
Fidelity index Rf

Rg 95.4

Gamut index Rg

Hue Bin	R _f	Graphic shifts (%)	
		Chroma	Hue
1	80	-11%	0%
2	82	-8%	6%
3	80	-3%	10%
4	91	0%	5%
5	94	1%	3%
6	94	2%	-2%
7	88	-4%	-6%
8	94	-3%	0%
9	90	-6%	3%
10	85	-4%	8%
11	84	0%	11%
12	86	6%	2%
13	88	4%	-8%
14	80	4%	-16%
15	84	-3%	-9%
16	76	-9%	-16%





Beam intensities from 1-20m

1m	2m	3m	4m	5m	6m	7m	8m	9m	10m	11m	12m	13m	14m	15m	16m	17m	18m	19m	20m
3.3ft	6.6ft	9.8ft	13.1ft	16.4ft	19.7ft	23ft	26.2ft	29.5ft	32.8ft	36.1ft	39.4ft	42.7ft	45.9ft	49.2ft	52.5ft	55.8ft	59.1ft	62.3ft	65.6ft
1703lx	426lx	189lx	106lx	68lx	47lx	35lx	27lx	21lx	17lx	14lx	12lx	10lx	9lx	8lx	7lx	6lx	5lx	5lx	4lx
158.2fcd	39.5fcd	17.6fcd	9.9fcd	6.3fcd	4.4fcd	3.2fcd	2.5fcd	2fcd	1.6fcd	1.3fcd	1.1fcd	0.9fcd	0.8fcd	0.7fcd	0.6fcd	0.5fcd	0.5fcd	0.4fcd	0.4fcd

Intensities in 0° c-plane

0°	5°	10°	15°	20°	25°	30°	35°	40°	45°	50°	55°	60°	65°	70°	75°	80°	85°	90°	95°
1703	1916	2088	2225	2324	2381	2367	2274	2117	1906	1612	1031	614	396	134	39	21	8	1	0
100%	113%	123%	131%	136%	140%	139%	134%	124%	112%	95%	61%	36%	23%	8%	2%	1%	0%	0%	0%

Intensities in 90° c-plane

0°	5°	10°	15°	20°	25°	30°	35°	40°	45°	50°	55°	60°	65°	70°	75°	80°	85°	90°	95°
1703	1686	1635	1543	1404	1228	1037	861	719	607	506	395	287	188	96	36	20	8	1	0
100%	99%	96%	91%	82%	72%	61%	51%	42%	36%	30%	23%	17%	11%	6%	2%	1%	0%	0%	0%

Intensities in 180° c-plane

0°	5°	10°	15°	20°	25°	30°	35°	40°	45°	50°	55°	60°	65°	70°	75°	80°	85°	90°	95°
1703	1460	1244	1077	999	981	991	1005	992	947	878	761	554	347	209	59	30	12	2	0
100%	86%	73%	63%	59%	58%	58%	59%	58%	56%	52%	45%	33%	20%	12%	3%	2%	1%	0%	0%

Intensities in 270° c-plane

0°	5°	10°	15°	20°	25°	30°	35°	40°	45°	50°	55°	60°	65°	70°	75°	80°	85°	90°	95°
1703	1686	1635	1543	1404	1228	1037	861	719	607	506	395	287	188	96	36	20	8	1	0
100%	99%	96%	91%	82%	72%	61%	51%	42%	36%	30%	23%	17%	11%	6%	2%	1%	0%	0%	0%

Beam angle 50%	Field angle 10%	Cutoff angle 2,5%	Intensity ratio in 120° cone	Intensity ratio in 90° cone
68.6°	134.7°	148°	90.9%	65.5%