

Light efficiency:

90 Lumen/Watt

Light quality:

CRI: 92.7

Color temperature:

3023 K

Output: 2562 lm

Peak: 5173 cd

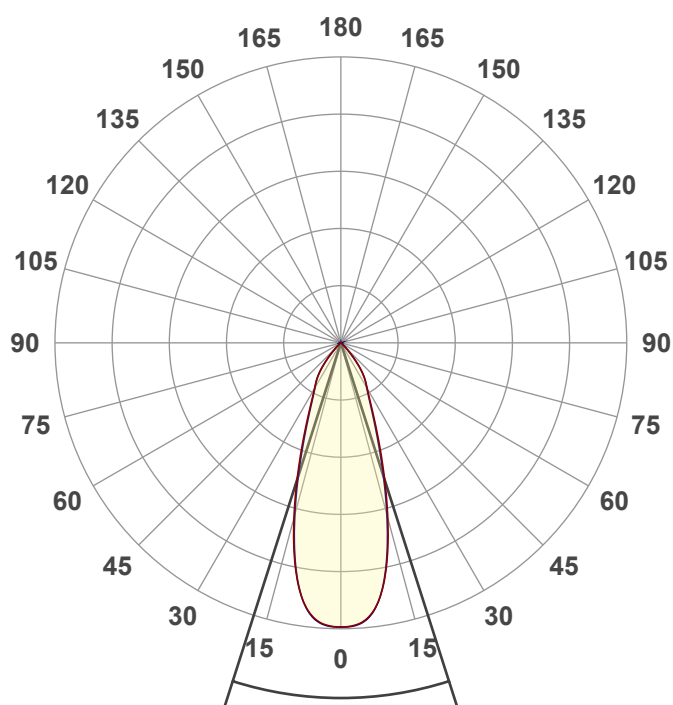
Power: 28.6 W

PF: 0.98



BETA-6R-WD-25LM-3018-97-35D-SBL-WH-WH

Date and time:
2/24/2025 10:14:17 AM



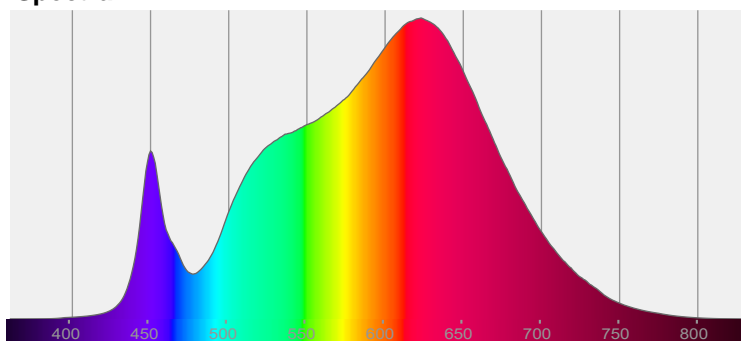
Beam angle

35.4°

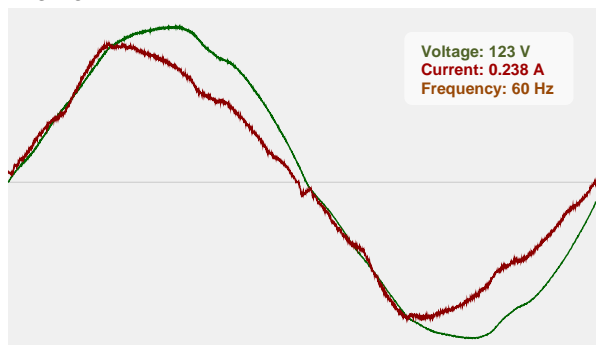


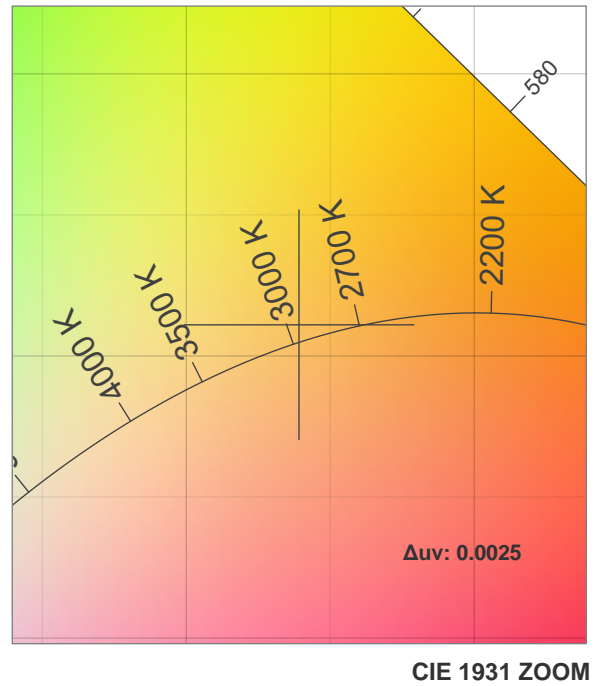
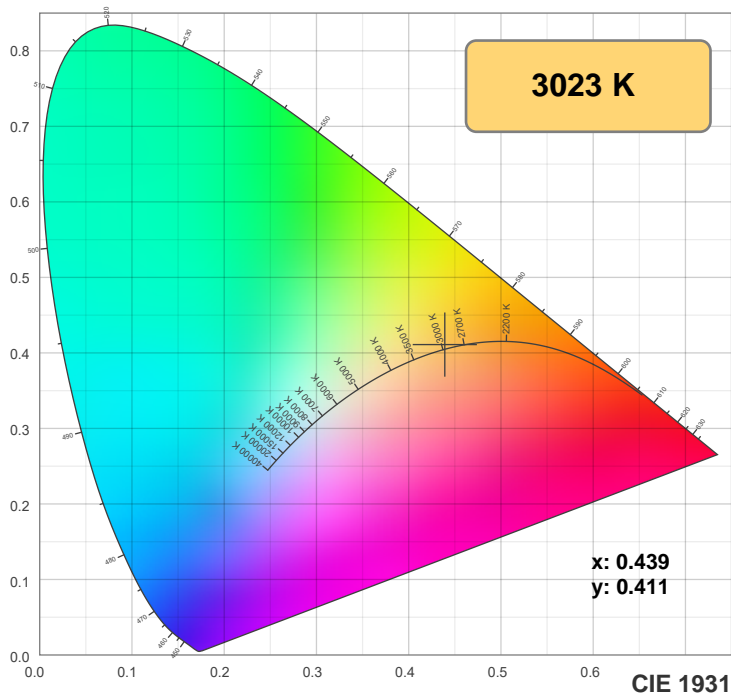
CIE 1931
x: 0.439
y: 0.411

Spectra

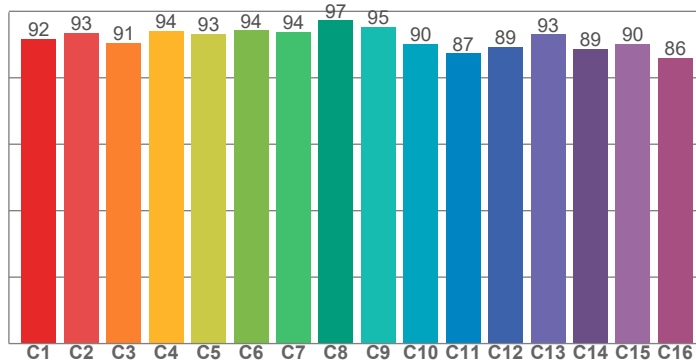


Power

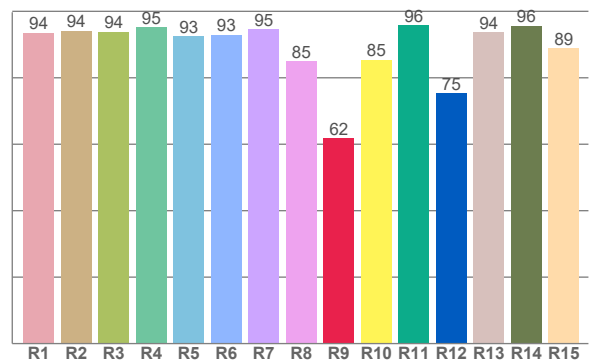




TM30: 91.9



CRI: 92.7 (R1-R8)



CRI R values, only R1-R8 are used to calculate final CRI value

R1	R2	R3	R4	R5	R6	R7	R8	R9	R10	R11	R12	R13	R14	R15
93.6	94.2	93.8	95.2	92.6	93.0	94.7	85.0	61.9	85.5	95.9	75.2	93.6	95.7	88.9

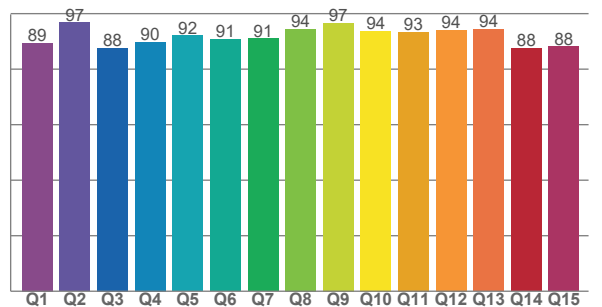
TM30 C values, 16 binned values out of total of 99 C values

C1	C2	C3	C4	C5	C6	C7	C8	C9	C10	C11	C12	C13	C14	C15	C16
91.8	93.5	90.6	94.1	93.1	94.3	93.8	97.3	95.2	90.3	87.4	89.2	93.1	88.8	90.2	86.0

CQS Q values

Q1	Q2	Q3	Q4	Q5	Q6	Q7	Q8	Q9	Q10	Q11	Q12	Q13	Q14	Q15
89.4	96.8	87.6	89.7	92.1	90.8	91.0	94.5	96.6	93.7	93.4	94.1	94.4	87.5	88.2

CQS: 91.3



Color parameters

Color temperature	Color rendering index	Red component	Color fidelity	Color gamut	Color quality scale	Color coordinate cie 1931	Color coordinate cie 1931	Color coordinate	Color coordinate	Color deviation from black body
CCT	CRI	CRI R9	TM30 Rf	TM30 Rg	CQS	x	y	u	v	Δuv
3023 K	92.7	61.9	91.9	100.4	91.3	0.439	0.411	0.249	0.350	0.0025

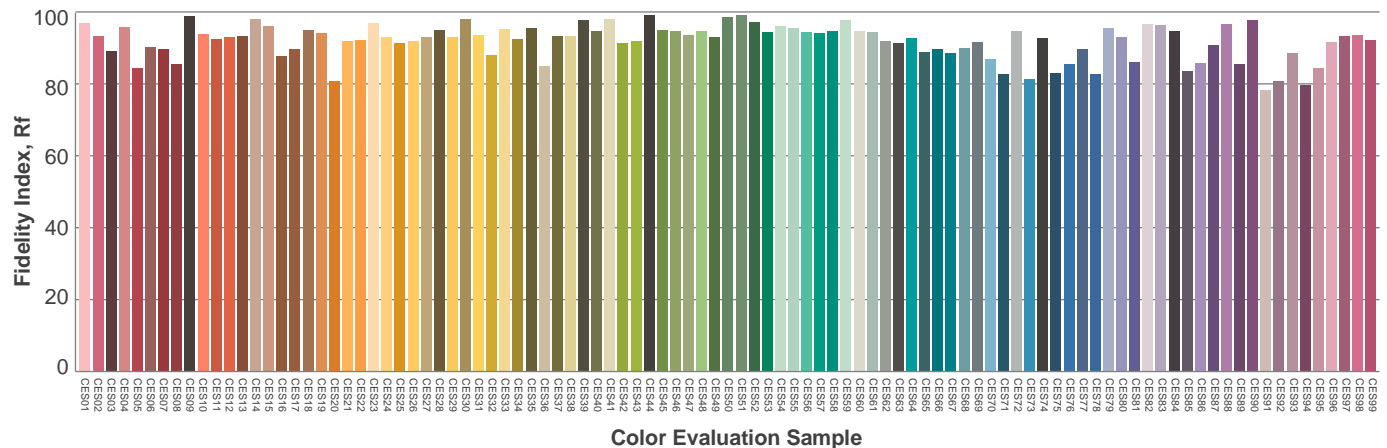
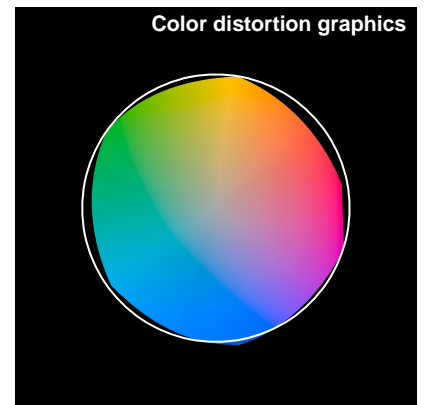
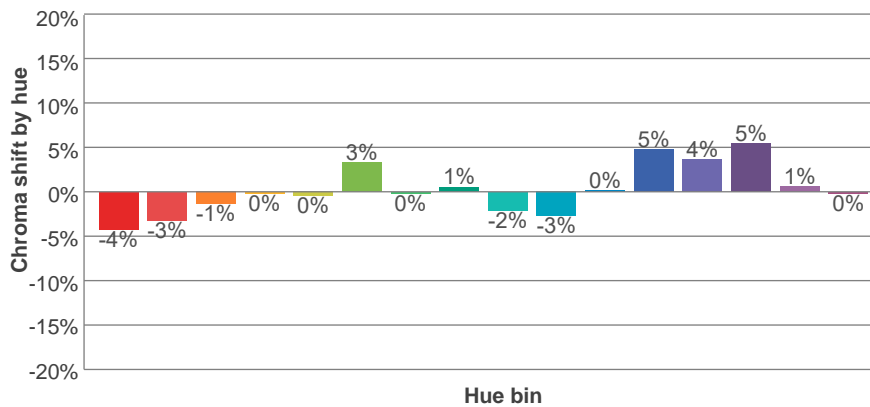
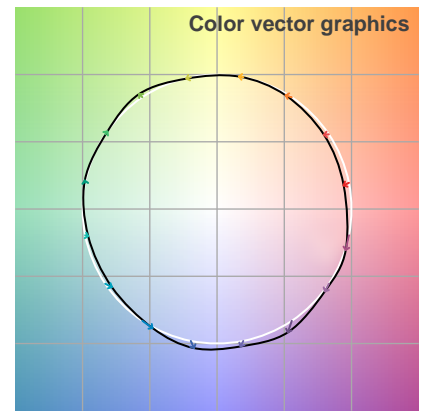
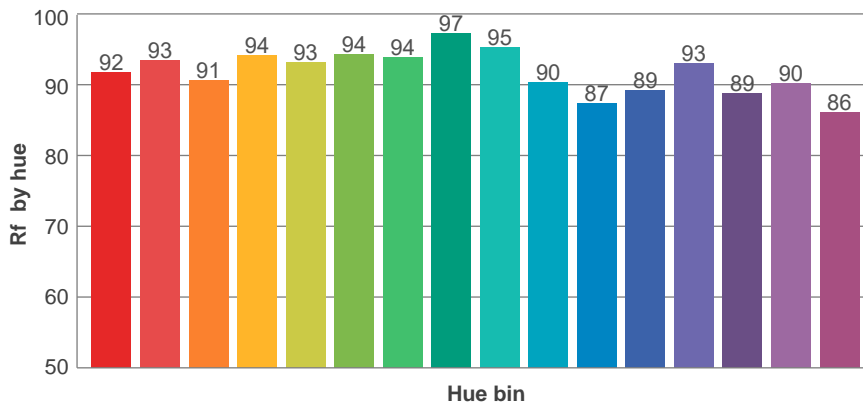
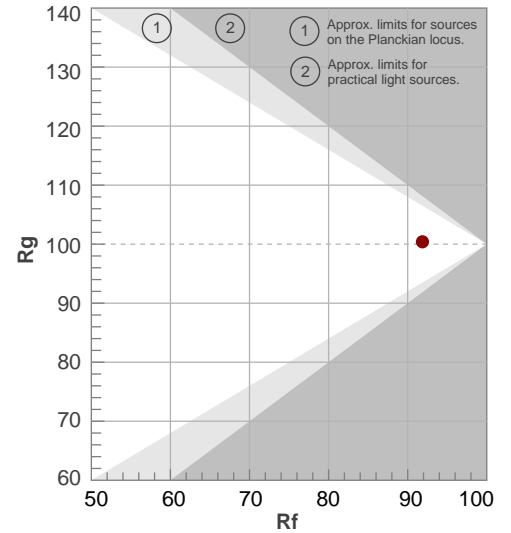
Rf 91.9

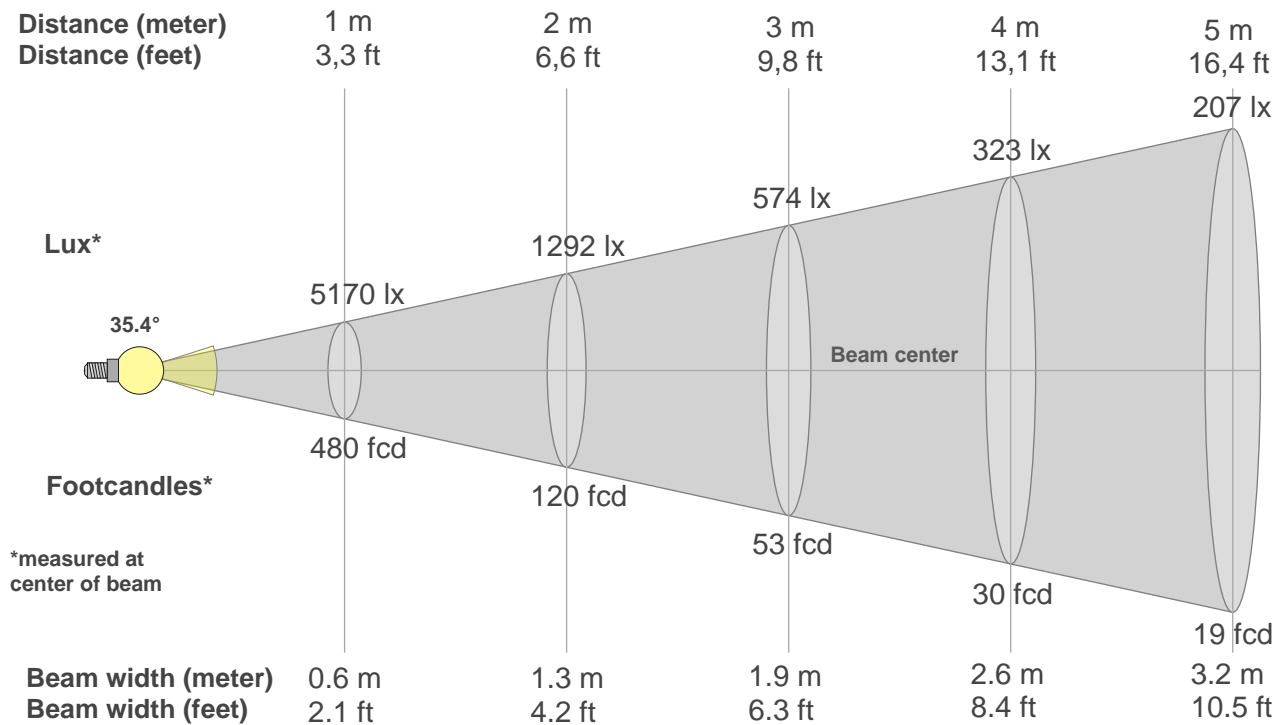
Fidelity index Rf

Rg 100.4

Gammut index Rg

Hue Bin	R _f	Graphic shifts (%)	
		Chroma	Hue
1	92	-4%	-1%
2	93	-3%	2%
3	91	-1%	5%
4	94	0%	3%
5	93	0%	3%
6	94	3%	1%
7	94	0%	-3%
8	97	1%	-2%
9	95	-2%	1%
10	90	-3%	5%
11	87	0%	9%
12	89	5%	3%
13	93	4%	-3%
14	89	5%	-7%
15	90	1%	-6%
16	86	0%	-11%





Beam intensities from 1-20m

1m	2m	3m	4m	5m	6m	7m	8m	9m	10m	11m	12m	13m	14m	15m	16m	17m	18m	19m	20m
3.3ft	6.6ft	9.8ft	13.1ft	16.4ft	19.7ft	23ft	26.2ft	29.5ft	32.8ft	36.1ft	39.4ft	42.7ft	45.9ft	49.2ft	52.5ft	55.8ft	59.1ft	62.3ft	65.6ft
5170lx	1292lx	574lx	323lx	207lx	144lx	106lx	81lx	64lx	52lx	43lx	36lx	31lx	26lx	23lx	20lx	18lx	16lx	14lx	13lx
480.3fcd	120.1fcd	53.4fcd	30fcd	19.2fcd	13.3fcd	9.8fcd	7.5fcd	5.9fcd	4.8fcd	4fcd	3.3fcd	2.8fcd	2.5fcd	2.1fcd	1.9fcd	1.7fcd	1.5fcd	1.3fcd	1.2fcd

Intensities in 0° c-plane

0°	2°	4°	6°	8°	10°	12°	14°	16°	18°	20°	22°	24°	26°	28°	30°	32°	34°	36°	38°
5170	5152	5108	4988	4779	4466	4038	3550	3043	2559	2127	1763	1476	1251	1083	960	862	767	656	528
100%	100%	99%	96%	92%	86%	78%	69%	59%	50%	41%	34%	29%	24%	21%	19%	17%	15%	13%	10%

Intensities in 90° c-plane

0°	2°	4°	6°	8°	10°	12°	14°	16°	18°	20°	22°	24°	26°	28°	30°	32°	34°	36°	38°
5170	5159	5117	5000	4781	4449	4004	3495	2970	2480	2048	1690	1419	1210	1052	941	852	759	645	512
100%	100%	99%	97%	92%	86%	77%	68%	57%	48%	40%	33%	27%	23%	20%	18%	16%	15%	12%	10%

Intensities in 180° c-plane

0°	2°	4°	6°	8°	10°	12°	14°	16°	18°	20°	22°	24°	26°	28°	30°	32°	34°	36°	38°
5170	5152	5108	4988	4779	4466	4038	3550	3043	2559	2127	1763	1476	1251	1083	960	862	767	656	528
100%	100%	99%	96%	92%	86%	78%	69%	59%	50%	41%	34%	29%	24%	21%	19%	17%	15%	13%	10%

Intensities in 270° c-plane

0°	2°	4°	6°	8°	10°	12°	14°	16°	18°	20°	22°	24°	26°	28°	30°	32°	34°	36°	38°
5170	5159	5117	5000	4781	4449	4004	3495	2970	2480	2048	1690	1419	1210	1052	941	852	759	645	512
100%	100%	99%	97%	92%	86%	77%	68%	57%	48%	40%	33%	27%	23%	20%	18%	16%	15%	12%	10%

Beam angle 50%	Field angle 10%	Cutoff angle 2,5%	Intensity ratio in 120° cone	Intensity ratio in 90° cone
35.4°	76.1°	89.7°	99.3%	97.5%