

Light efficiency:

105 Lumen/Watt

Light quality:

CRI: 81.6

Color temperature:

2981 K

Output: 3268 lm

Peak: 1903 cd

Power: 31.0 W

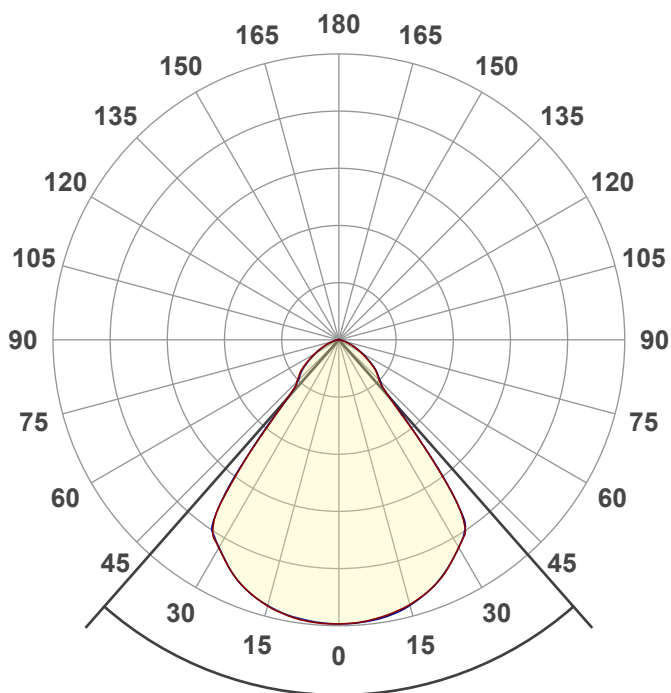
PF: 0.98



BETA-4Q-SW-35LM-30K-80-WH80-WH-WH

Date and time:

9/14/2022 9:28:12 AM



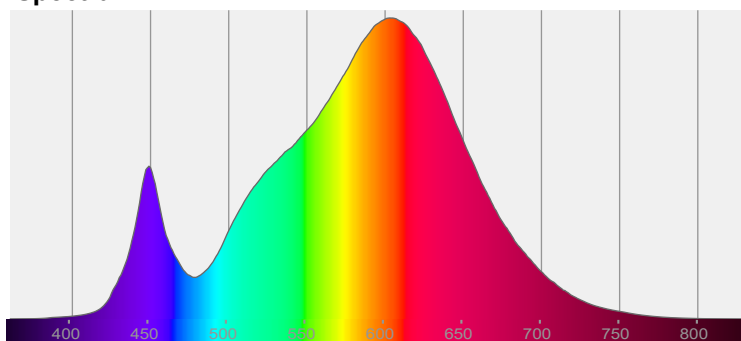
Beam angle

82.7°

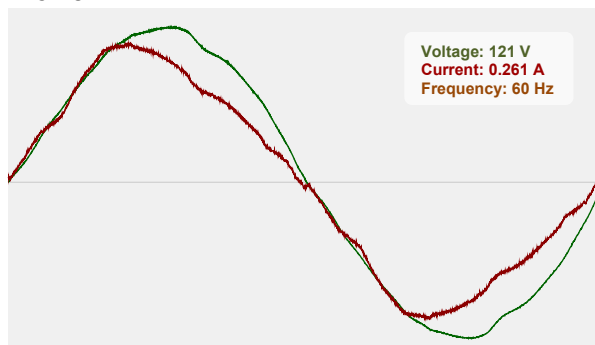


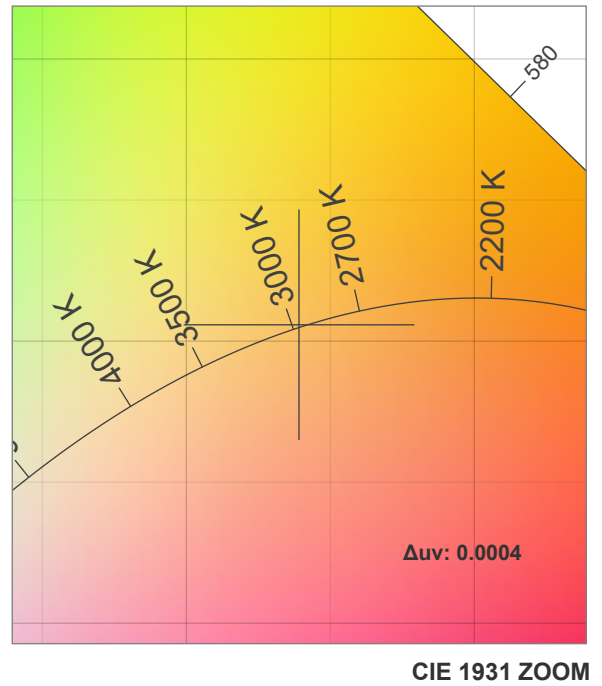
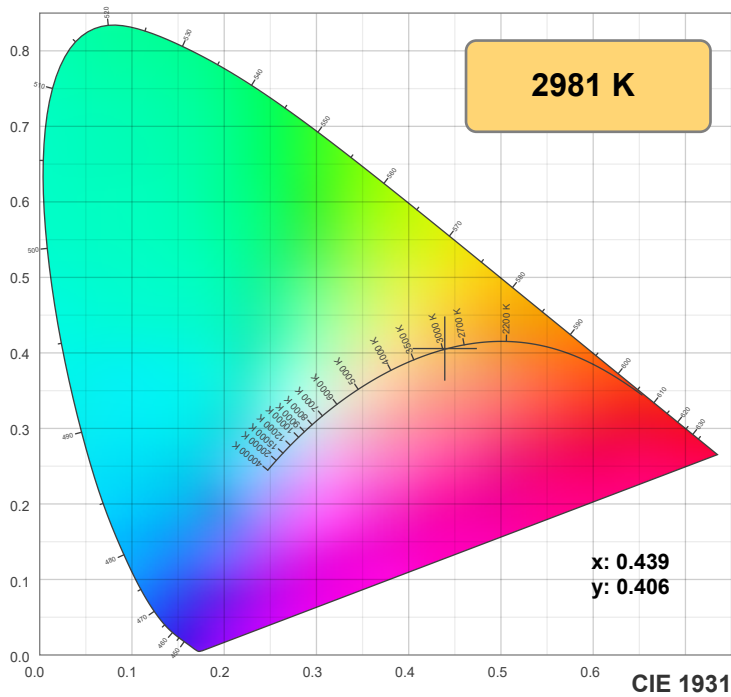
CIE 1931
x: 0.439
y: 0.406

Spectra

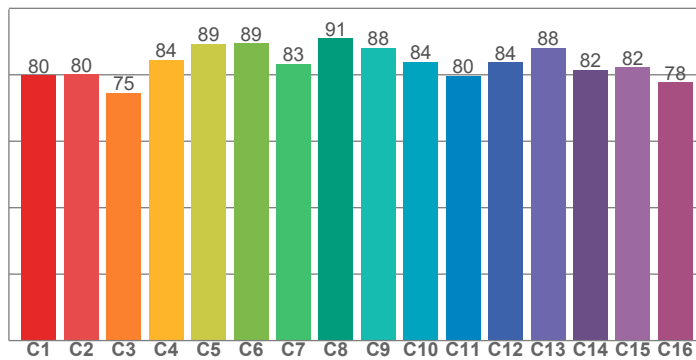


Power

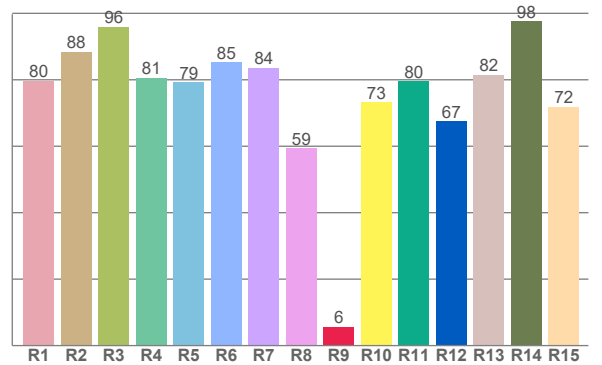




TM30: 83.3



CRI: 81.6 (R1-R8)



CRI R values, only R1-R8 are used to calculate final CRI value

R1	R2	R3	R4	R5	R6	R7	R8	R9	R10	R11	R12	R13	R14	R15
79.7	88.4	96.0	80.7	79.3	85.4	83.7	59.4	5.7	73.3	79.7	67.5	81.5	97.6	71.9

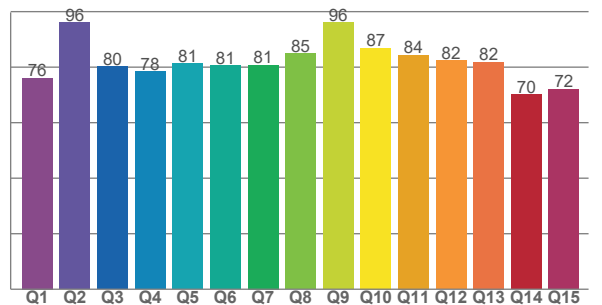
TM30 C values, 16 binned values out of total of 99 C values

C1	C2	C3	C4	C5	C6	C7	C8	C9	C10	C11	C12	C13	C14	C15	C16
79.8	80.1	74.5	84.4	89.3	89.4	83.3	91.0	88.1	83.9	79.6	83.7	88.1	81.5	82.2	77.7

CQS Q values

Q1	Q2	Q3	Q4	Q5	Q6	Q7	Q8	Q9	Q10	Q11	Q12	Q13	Q14	Q15
76.0	96.1	80.2	78.5	81.2	80.5	80.8	84.9	96.0	87.0	84.3	82.4	81.8	70.1	72.0

CQS: 80.7



Color parameters

Color temperature	Color rendering index	Red component	Color fidelity	Color gamut	Color quality scale	Color coordinate cie 1931	Color coordinate cie 1931	Color coordinate	Color coordinate	Color deviation from black body
CCT	CRI	CRI R9	TM30 Rf	TM30 Rg	CQS	x	y	u	v	Δuv
2981 K	81.6	5.7	83.3	97.5	80.7	0.439	0.406	0.251	0.348	0.0004

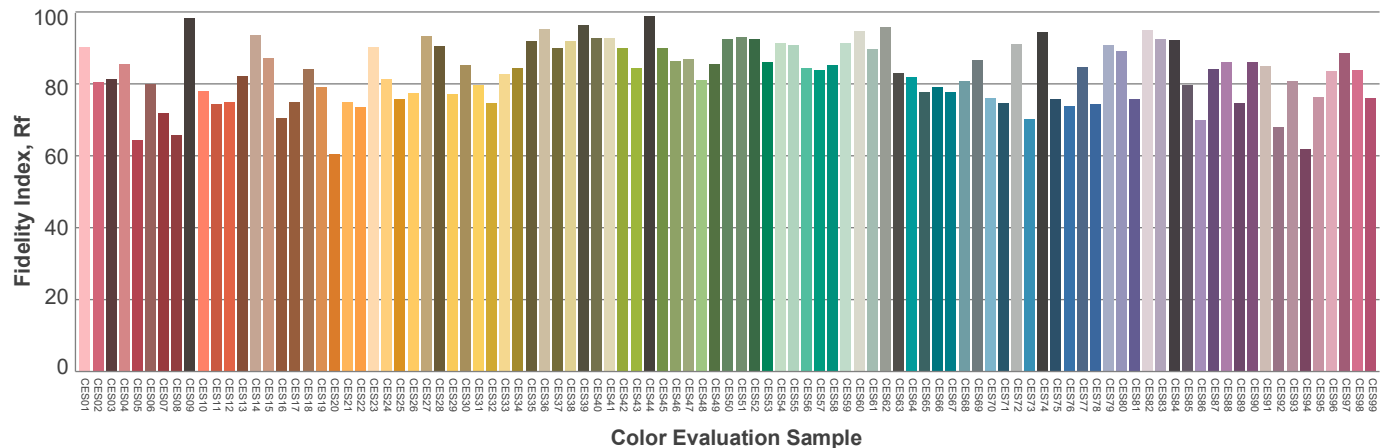
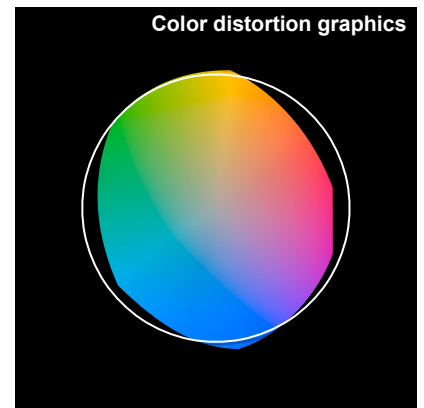
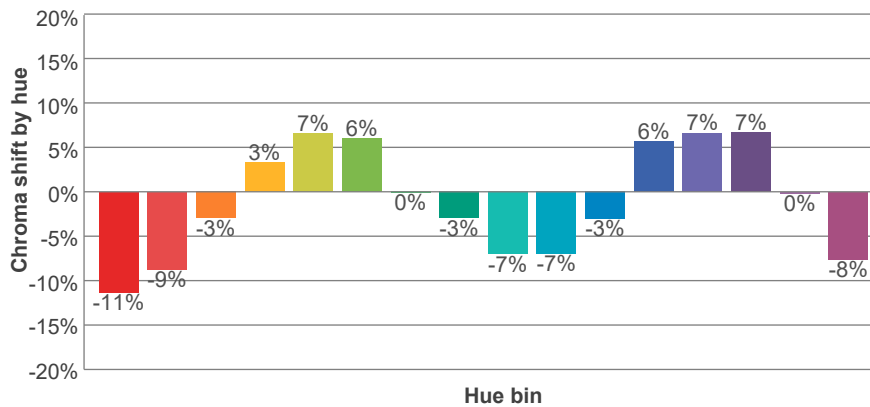
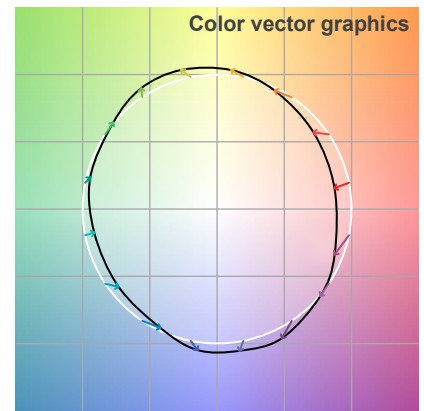
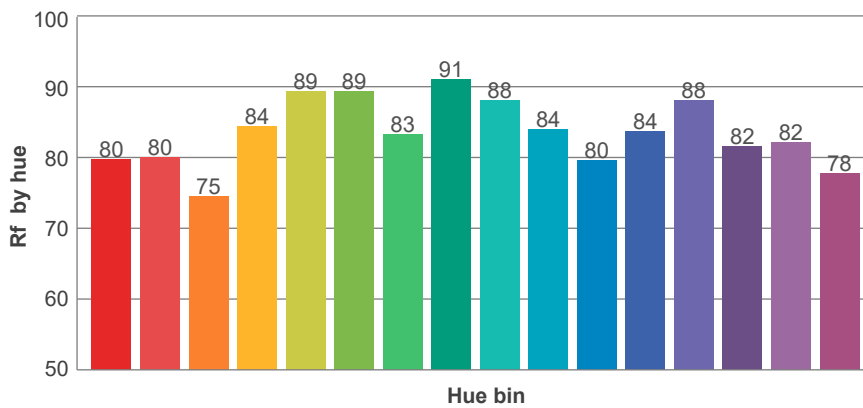
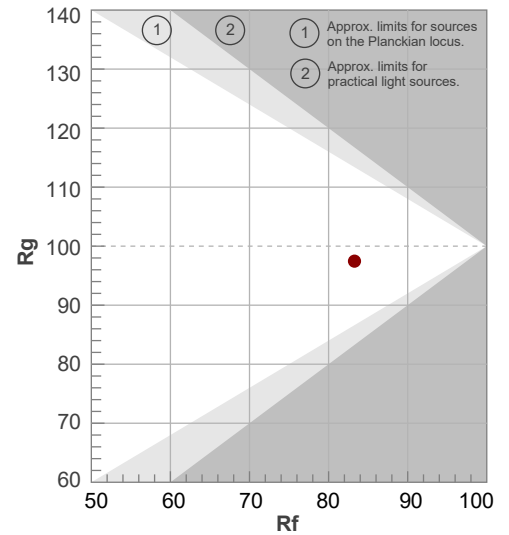
Rf 83.3

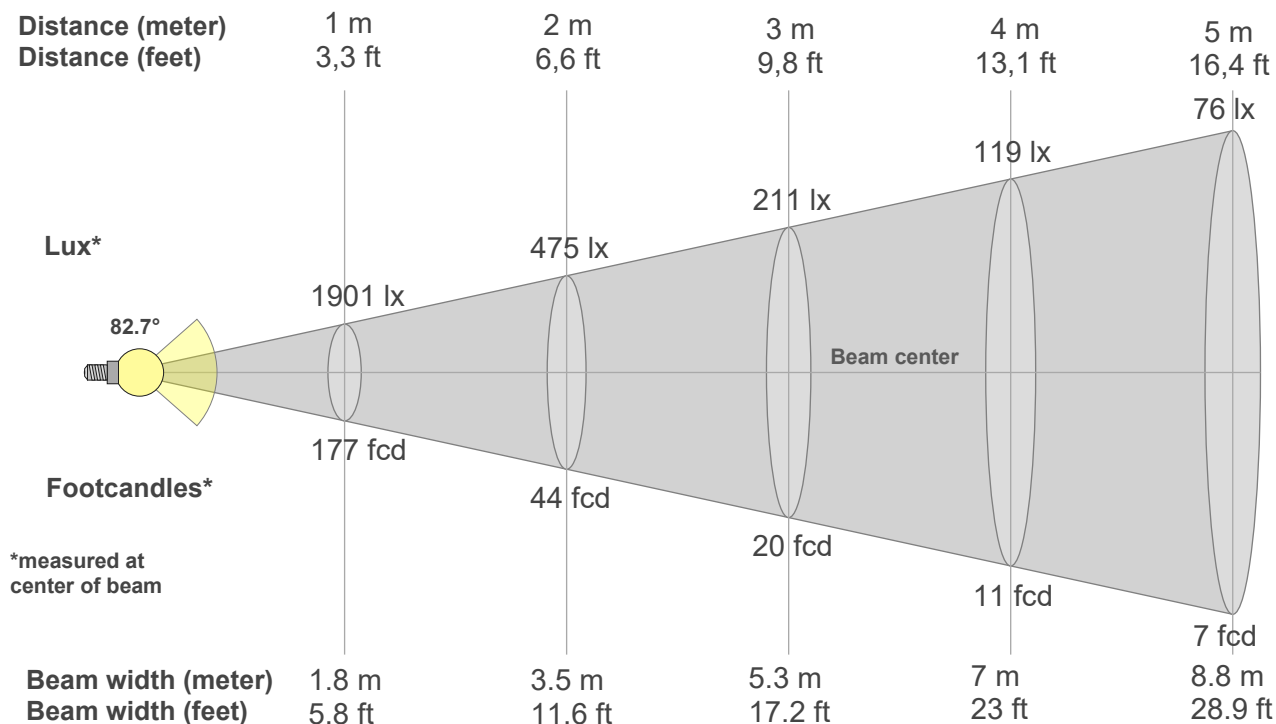
Fidelity index Rf

Rg 97.5

Gamut index Rg

Hue Bin	R _f	Graphic shifts (%)	
		Chroma	Hue
1	80	-11%	-2%
2	80	-9%	7%
3	75	-3%	13%
4	84	3%	10%
5	89	7%	6%
6	89	6%	-3%
7	83	0%	-11%
8	91	-3%	-5%
9	88	-7%	-1%
10	84	-7%	7%
11	80	-3%	14%
12	84	6%	6%
13	88	7%	-4%
14	82	7%	-13%
15	82	0%	-11%
16	78	-8%	-16%





Beam intensities from 1-20m

1m	2m	3m	4m	5m	6m	7m	8m	9m	10m	11m	12m	13m	14m	15m	16m	17m	18m	19m	20m
3.3ft	6.6ft	9.8ft	13.1ft	16.4ft	19.7ft	23ft	26.2ft	29.5ft	32.8ft	36.1ft	39.4ft	42.7ft	45.9ft	49.2ft	52.5ft	55.8ft	59.1ft	62.3ft	65.6ft
1901lx	475lx	211lx	119lx	76lx	53lx	39lx	30lx	23lx	19lx	16lx	13lx	11lx	10lx	8lx	7lx	7lx	6lx	5lx	5lx
176.6fcd	44.1fcd	19.6fcd	11fcd	7.1fcd	4.9fcd	3.6fcd	2.8fcd	2.2fcd	1.8fcd	1.5fcd	1.2fcd	1fcd	0.9fcd	0.8fcd	0.7fcd	0.6fcd	0.5fcd	0.5fcd	0.4fcd

Intensities in 0° c-plane

0°	5°	10°	15°	20°	25°	30°	35°	40°	45°	50°	55°	60°	65°	70°	75°	80°	85°	90°	95°
1901	1893	1870	1834	1781	1704	1605	1418	691	385	322	243	172	113	67	40	20	5	0	0
100%	100%	98%	97%	94%	90%	84%	75%	36%	20%	17%	13%	9%	6%	4%	2%	1%	0%	0%	0%

Intensities in 90° c-plane

0°	5°	10°	15°	20°	25°	30°	35°	40°	45°	50°	55°	60°	65°	70°	75°	80°	85°	90°	95°
1901	1895	1878	1839	1780	1700	1604	1456	703	394	328	252	181	122	74	42	23	8	0	0
100%	100%	99%	97%	94%	89%	84%	77%	37%	21%	17%	13%	10%	6%	4%	2%	1%	0%	0%	0%

Intensities in 180° c-plane

0°	5°	10°	15°	20°	25°	30°	35°	40°	45°	50°	55°	60°	65°	70°	75°	80°	85°	90°	95°
1901	1898	1880	1843	1786	1707	1608	1425	684	399	337	259	186	127	78	45	25	10	1	0
100%	100%	99%	97%	94%	90%	85%	75%	36%	21%	18%	14%	10%	7%	4%	2%	1%	1%	0%	0%

Intensities in 270° c-plane

0°	5°	10°	15°	20°	25°	30°	35°	40°	45°	50°	55°	60°	65°	70°	75°	80°	85°	90°	95°
1901	1893	1876	1840	1788	1706	1603	1432	714	387	322	247	176	119	73	42	22	8	0	0
100%	100%	99%	97%	94%	90%	84%	75%	38%	20%	17%	13%	9%	6%	4%	2%	1%	0%	0%	0%

Beam angle 50%	Field angle 10%	Cutoff angle 2,5%	Intensity ratio in 120° cone	Intensity ratio in 90° cone
82.7°	119.6°	148.3°	94.4%	81.5%