

Light efficiency:

100 Lumen/Watt

Light quality:

CRI: 81.5

Color temperature:

2973 K

Output: 3089 lm

Peak: 1675 cd

Power: 31.0 W

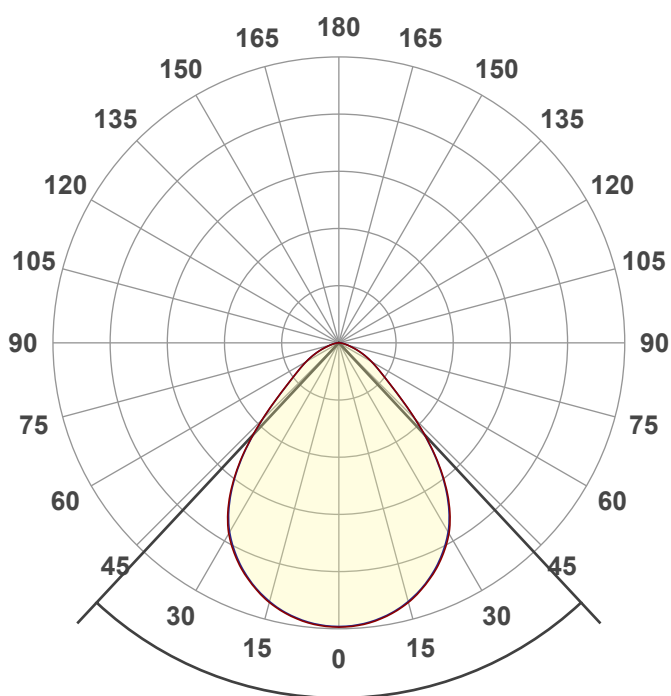
PF: 0.98



BETA-4Q-SW-35LM-30K-80-HE80-WH-WH

Date and time:

9/14/2022 9:45:51 AM



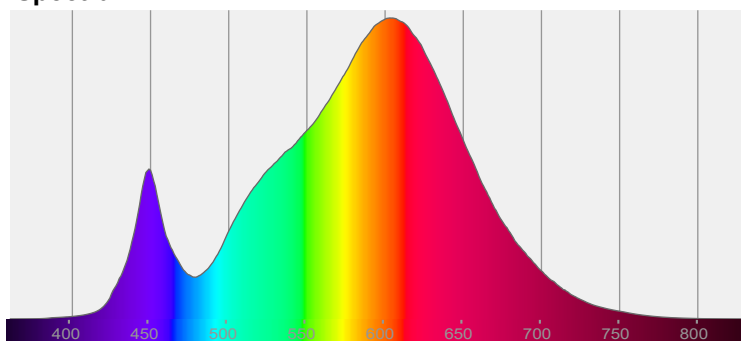
Beam angle

86°

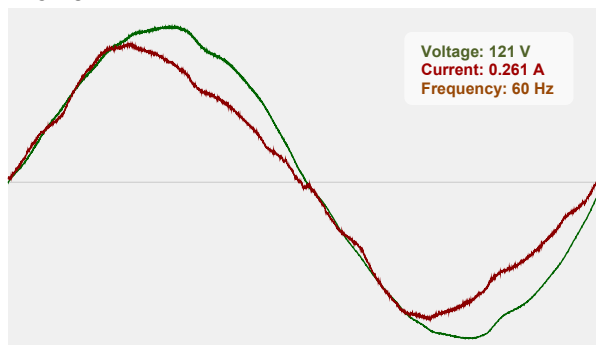


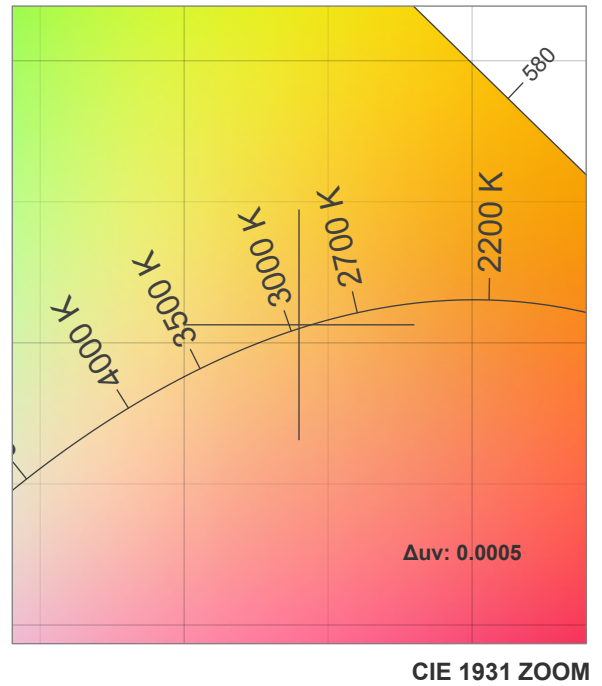
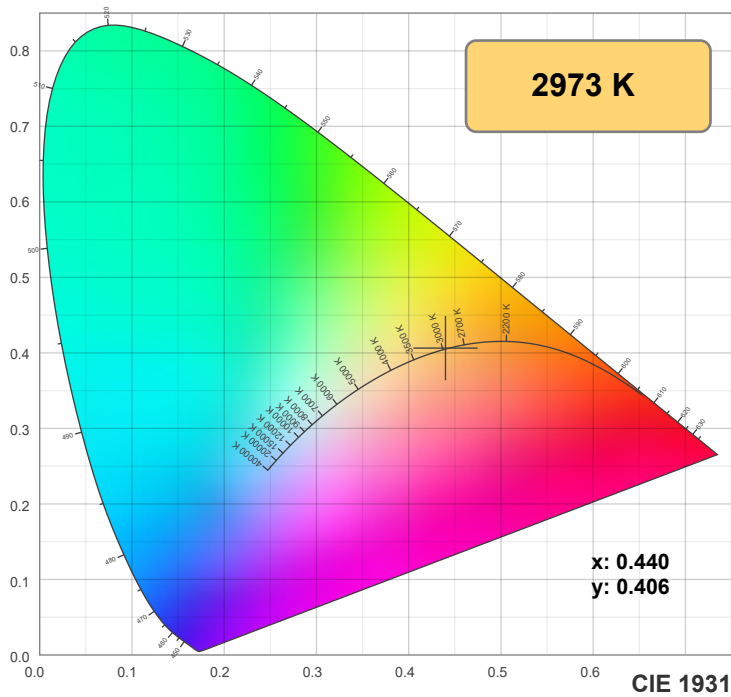
CIE 1931
x: 0.440
y: 0.406

Spectra

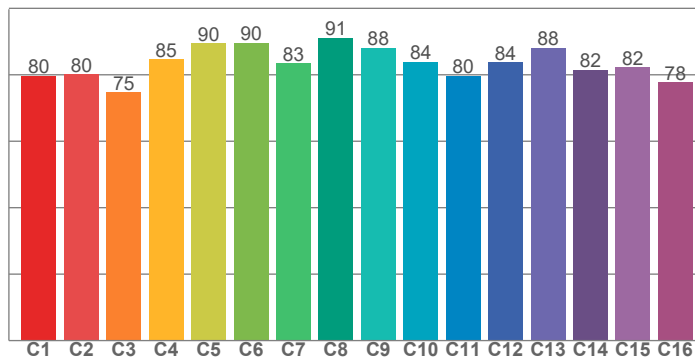


Power

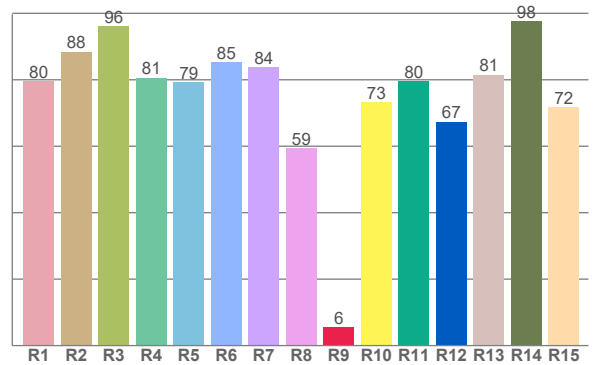




TM30: 83.3



CRI: 81.5 (R1-R8)



CRI R values, only R1-R8 are used to calculate final CRI value

R1	R2	R3	R4	R5	R6	R7	R8	R9	R10	R11	R12	R13	R14	R15
79.7	88.4	96.0	80.6	79.2	85.4	83.7	59.4	5.5	73.3	79.6	67.4	81.5	97.6	71.8

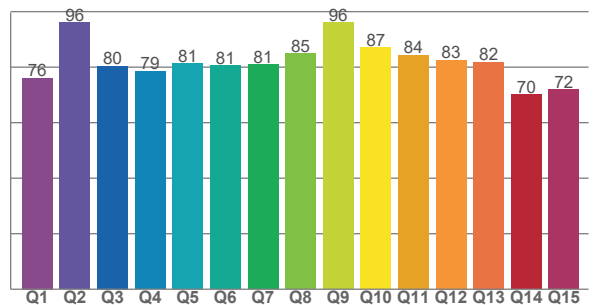
TM30 C values, 16 binned values out of total of 99 C values

C1	C2	C3	C4	C5	C6	C7	C8	C9	C10	C11	C12	C13	C14	C15	C16
79.7	80.1	74.7	84.6	89.5	89.6	83.4	91.1	88.1	83.9	79.7	83.8	88.2	81.5	82.2	77.7

CQS Q values

Q1	Q2	Q3	Q4	Q5	Q6	Q7	Q8	Q9	Q10	Q11	Q12	Q13	Q14	Q15
76.1	96.0	80.4	78.5	81.2	80.6	80.9	84.9	96.0	87.1	84.4	82.5	81.8	70.1	72.0

CQS: 80.7



Color parameters

Color temperature	Color rendering index	Red component	Color fidelity	Color gamut	Color quality scale	Color coordinate cie 1931	Color coordinate cie 1931	Color coordinate	Color coordinate	Color deviation from black body
CCT	CRI	CRI R9	TM30 Rf	TM30 Rg	CQS	x	y	u	v	Δuv
2973 K	81.5	5.5	83.3	97.3	80.7	0.440	0.406	0.251	0.348	0.0005

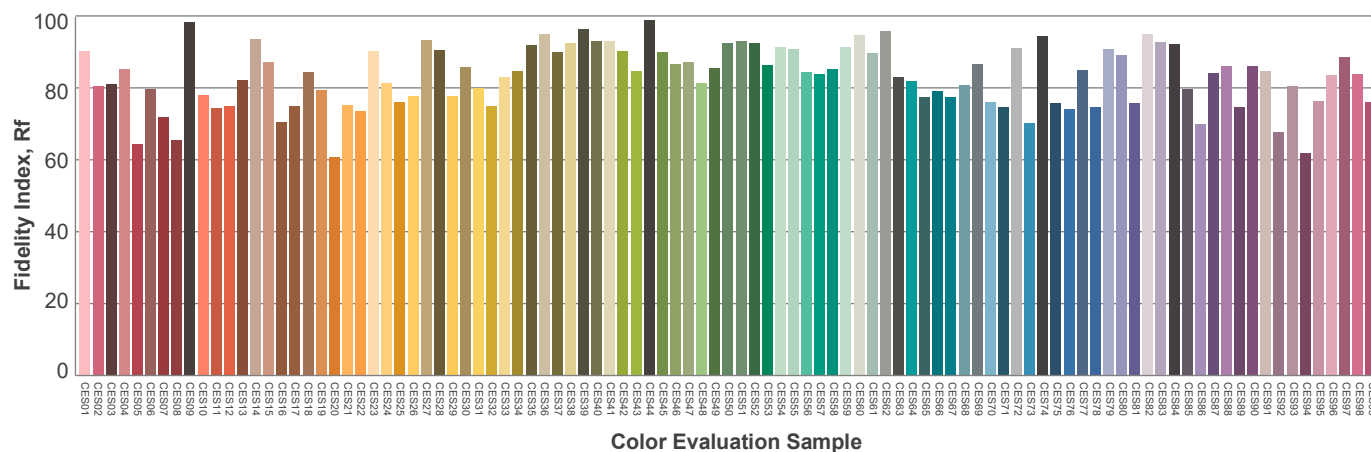
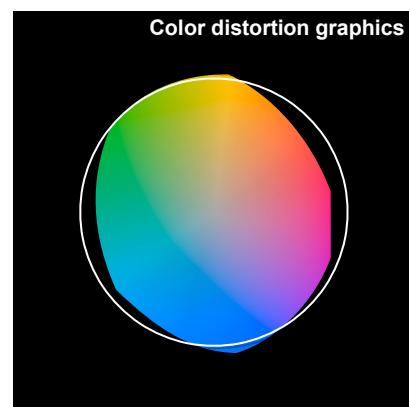
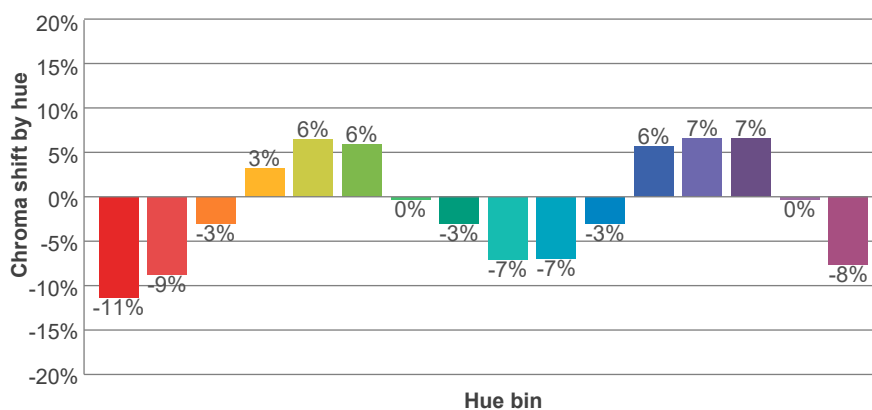
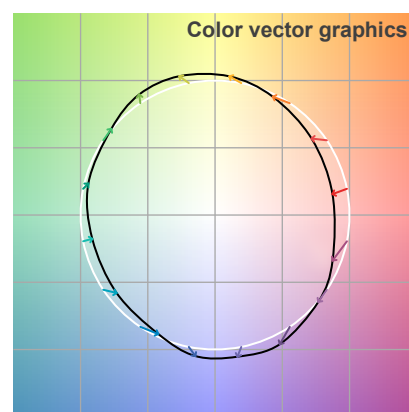
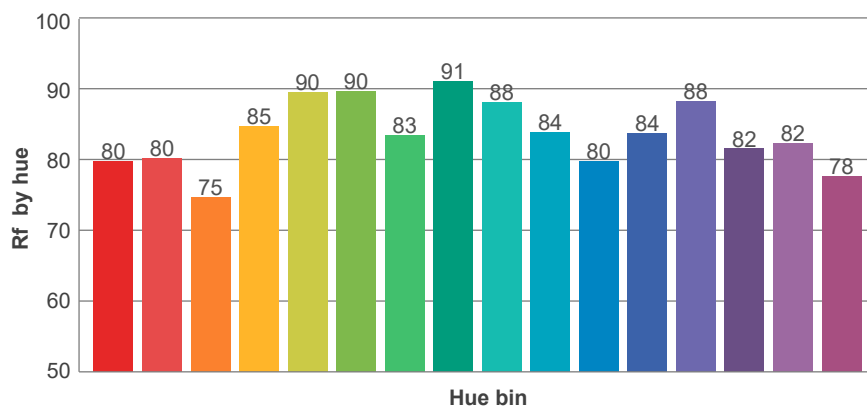
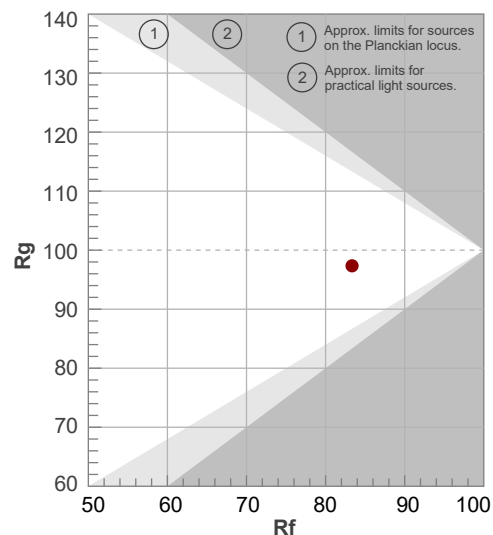
Rf 83.3

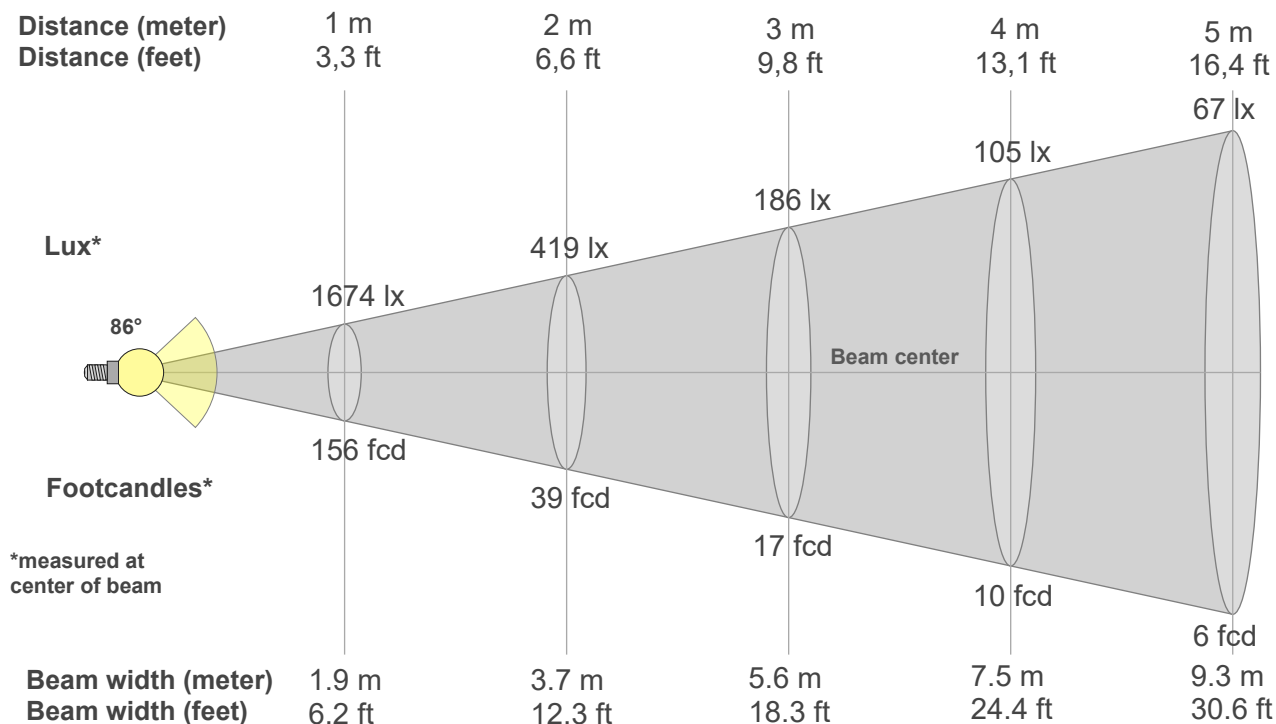
Fidelity index Rf

Rg 97.3

Gamut index Rg

Hue Bin	R _f	Graphic shifts (%)	
		Chroma	Hue
1	80	-11%	-2%
2	80	-9%	7%
3	75	-3%	13%
4	85	3%	10%
5	90	6%	6%
6	90	6%	-3%
7	83	0%	-10%
8	91	-3%	-5%
9	88	-7%	0%
10	84	-7%	7%
11	80	-3%	14%
12	84	6%	6%
13	88	7%	-4%
14	82	7%	-13%
15	82	0%	-11%
16	78	-8%	-16%





Beam intensities from 1-20m

1m	2m	3m	4m	5m	6m	7m	8m	9m	10m	11m	12m	13m	14m	15m	16m	17m	18m	19m	20m
3.3ft	6.6ft	9.8ft	13.1ft	16.4ft	19.7ft	23ft	26.2ft	29.5ft	32.8ft	36.1ft	39.4ft	42.7ft	45.9ft	49.2ft	52.5ft	55.8ft	59.1ft	62.3ft	65.6ft
1674lx	419lx	186lx	105lx	67lx	47lx	34lx	26lx	21lx	17lx	14lx	12lx	10lx	9lx	7lx	7lx	6lx	5lx	5lx	4lx
155.5fcd	38.9fcd	17.3fcd	9.7fcd	6.2fcd	4.3fcd	3.2fcd	2.4fcd	1.9fcd	1.6fcd	1.3fcd	1.1fcd	0.9fcd	0.8fcd	0.7fcd	0.6fcd	0.5fcd	0.5fcd	0.4fcd	0.4fcd

Intensities in 0° c-plane

0°	5°	10°	15°	20°	25°	30°	35°	40°	45°	50°	55°	60°	65°	70°	75°	80°	85°	90°	95°
1674	1665	1634	1583	1508	1415	1296	1125	899	640	425	301	223	157	98	55	29	11	1	0
100%	99%	98%	95%	90%	85%	77%	67%	54%	38%	25%	18%	13%	9%	6%	3%	2%	1%	0%	0%

Intensities in 90° c-plane

0°	5°	10°	15°	20°	25°	30°	35°	40°	45°	50°	55°	60°	65°	70°	75°	80°	85°	90°	95°
1674	1660	1629	1577	1503	1407	1286	1115	891	633	420	299	222	156	96	54	28	10	1	0
100%	99%	97%	94%	90%	84%	77%	67%	53%	38%	25%	18%	13%	9%	6%	3%	2%	1%	0%	0%

Intensities in 180° c-plane

0°	5°	10°	15°	20°	25°	30°	35°	40°	45°	50°	55°	60°	65°	70°	75°	80°	85°	90°	95°
1674	1665	1634	1583	1508	1415	1296	1125	899	640	425	301	223	157	98	55	29	11	1	0
100%	99%	98%	95%	90%	85%	77%	67%	54%	38%	25%	18%	13%	9%	6%	3%	2%	1%	0%	0%

Intensities in 270° c-plane

0°	5°	10°	15°	20°	25°	30°	35°	40°	45°	50°	55°	60°	65°	70°	75°	80°	85°	90°	95°
1674	1660	1629	1577	1503	1407	1286	1115	891	633	420	299	222	156	96	54	28	10	1	0
100%	99%	97%	94%	90%	84%	77%	67%	53%	38%	25%	18%	13%	9%	6%	3%	2%	1%	0%	0%

Beam angle 50%	Field angle 10%	Cutoff angle 2,5%	Intensity ratio in 120° cone	Intensity ratio in 90° cone
86°	129.1°	155°	92.2%	74.0%