

Light efficiency:

93 Lumen/Watt

Light quality:

CRI: 81.5

Color temperature:

2967 K

Output: 2877 lm

Peak: 1900 cd

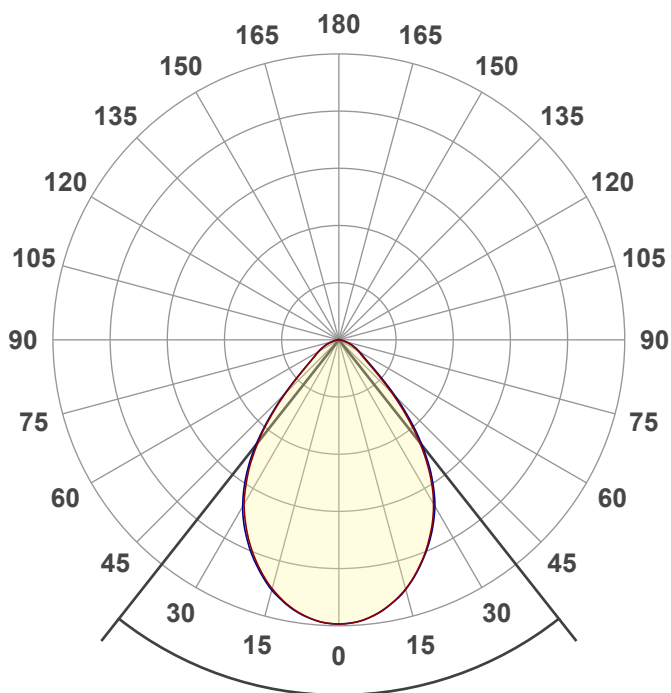
Power: 31.0 W

PF: 0.98



BETA-4Q-SW-35LM-30K-80-HE70-WH-WH

Date and time:
9/14/2022 10:04:53 AM



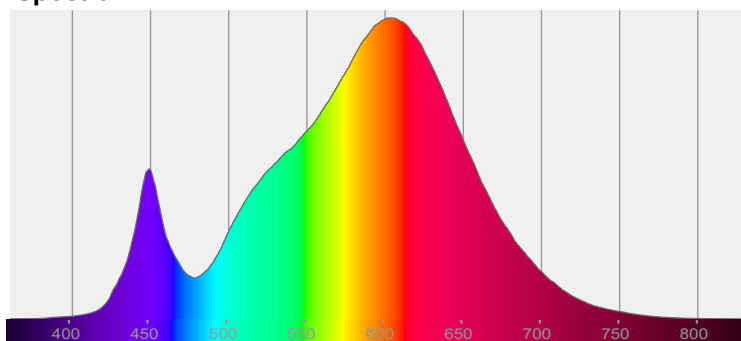
Beam angle

76.5°

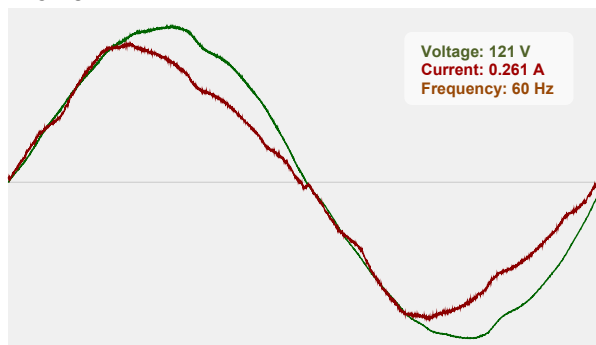


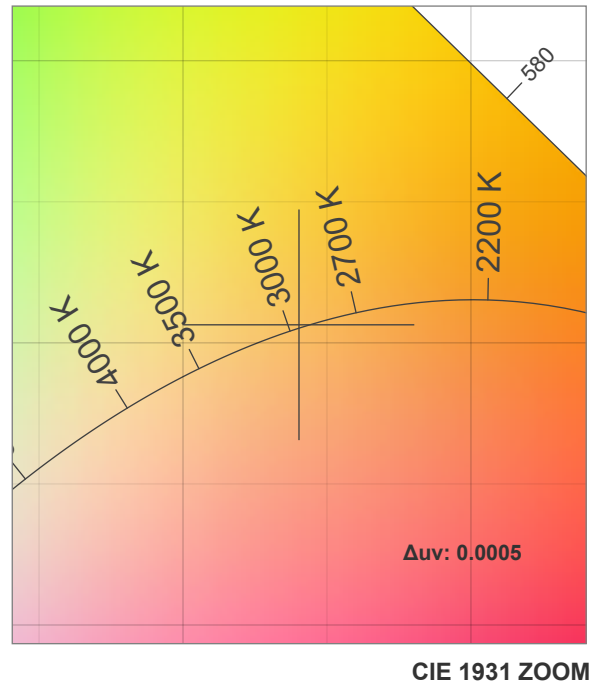
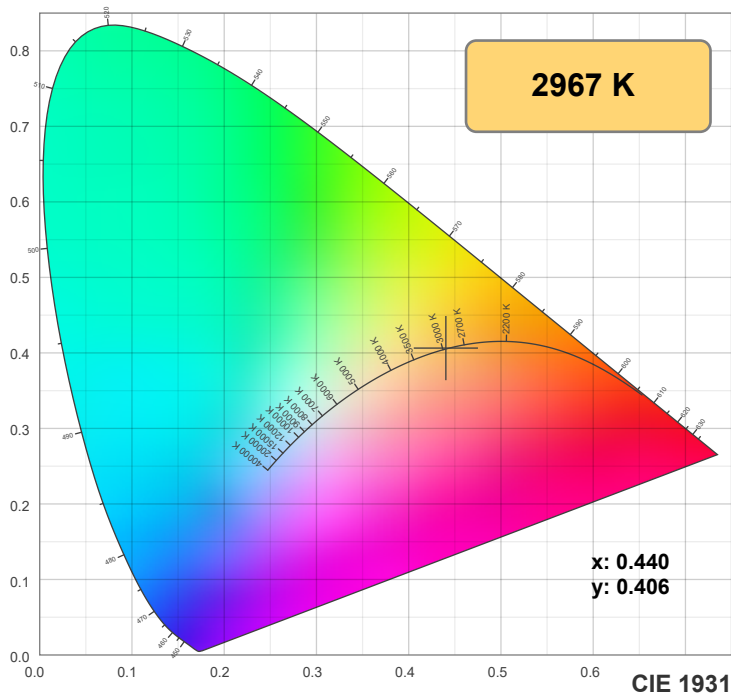
CIE 1931
x: 0.440
y: 0.406

Spectra

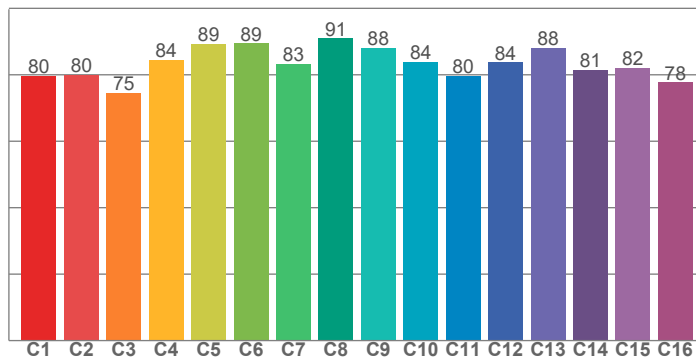


Power

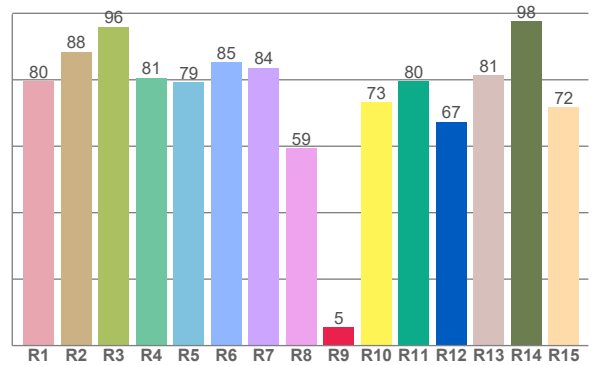




TM30: 83.3



CRI: 81.5 (R1-R8)



CRI R values, only R1-R8 are used to calculate final CRI value

R1	R2	R3	R4	R5	R6	R7	R8	R9	R10	R11	R12	R13	R14	R15
79.6	88.4	96.0	80.6	79.2	85.3	83.6	59.3	5.5	73.3	79.5	67.4	81.4	97.6	71.8

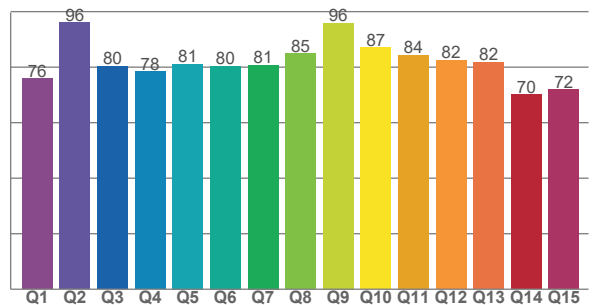
TM30 C values, 16 binned values out of total of 99 C values

C1	C2	C3	C4	C5	C6	C7	C8	C9	C10	C11	C12	C13	C14	C15	C16
79.7	80.0	74.5	84.5	89.3	89.5	83.2	91.0	88.0	83.9	79.7	83.7	88.1	81.5	82.1	77.7

CQS Q values

Q1	Q2	Q3	Q4	Q5	Q6	Q7	Q8	Q9	Q10	Q11	Q12	Q13	Q14	Q15
76.0	96.0	80.3	78.5	81.2	80.5	80.8	84.8	96.0	87.0	84.4	82.4	81.8	70.1	71.9

CQS: 80.7



Color parameters

Color temperature	Color rendering index	Red component	Color fidelity	Color gamut	Color quality scale	Color coordinate cie 1931	Color coordinate cie 1931	Color coordinate	Color coordinate	Color deviation from black body
CCT	CRI	CRI R9	TM30 Rf	TM30 Rg	CQS	x	y	u	v	Δuv
2967 K	81.5	5.5	83.3	97.4	80.7	0.440	0.406	0.252	0.349	0.0005

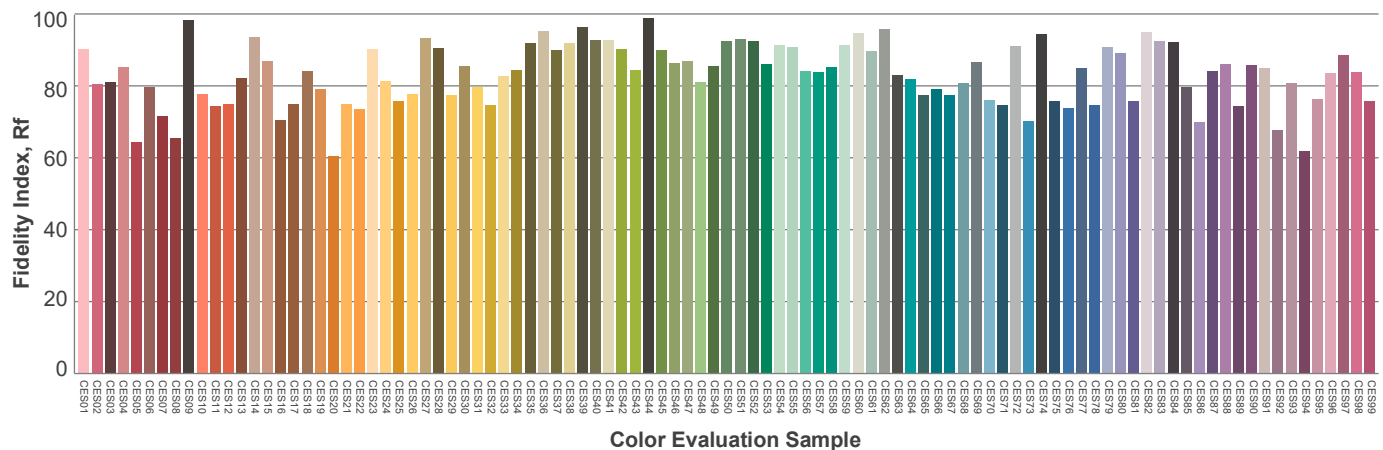
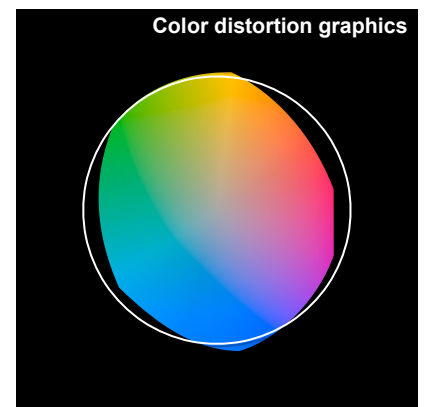
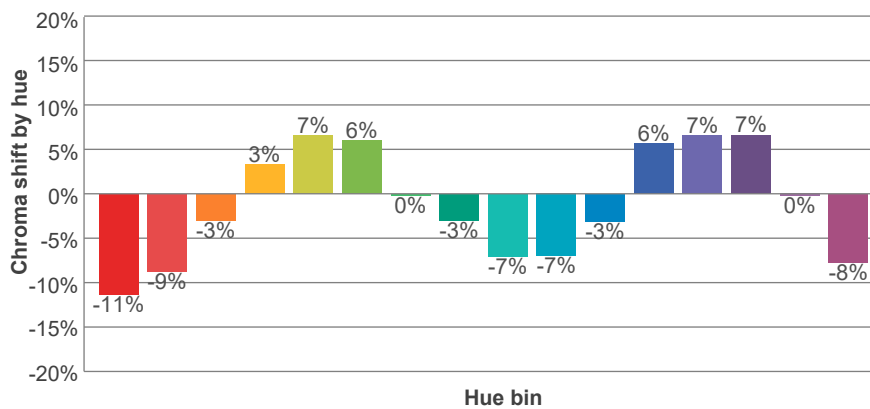
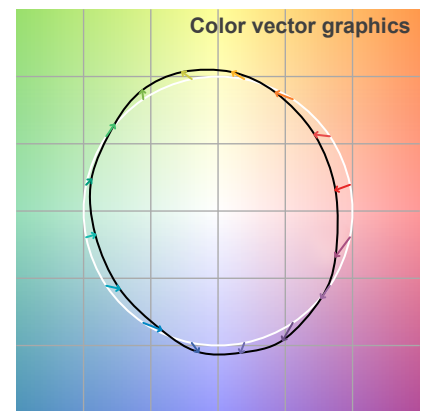
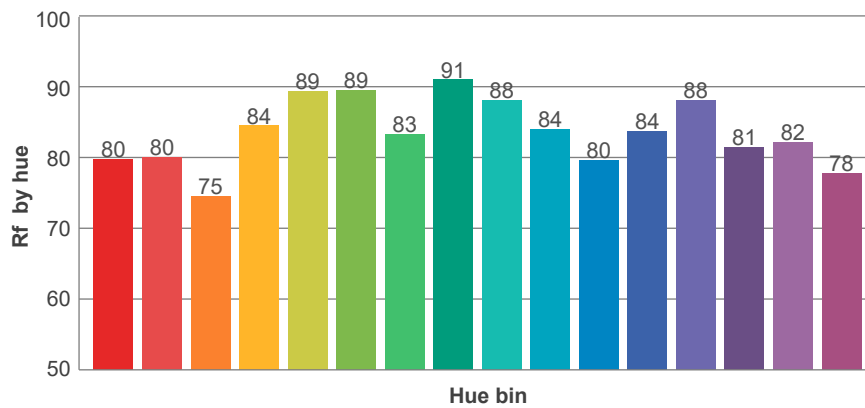
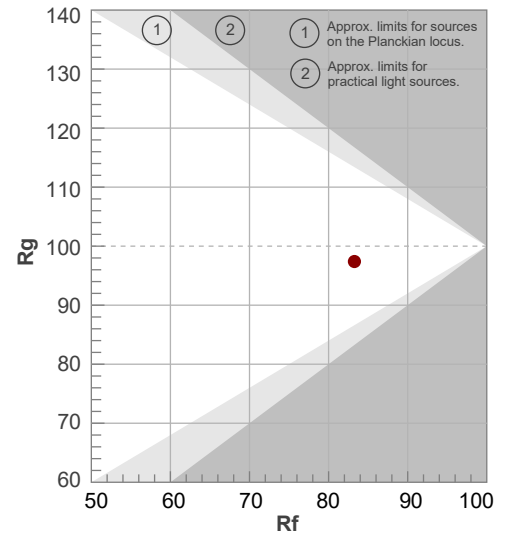
Rf 83.3

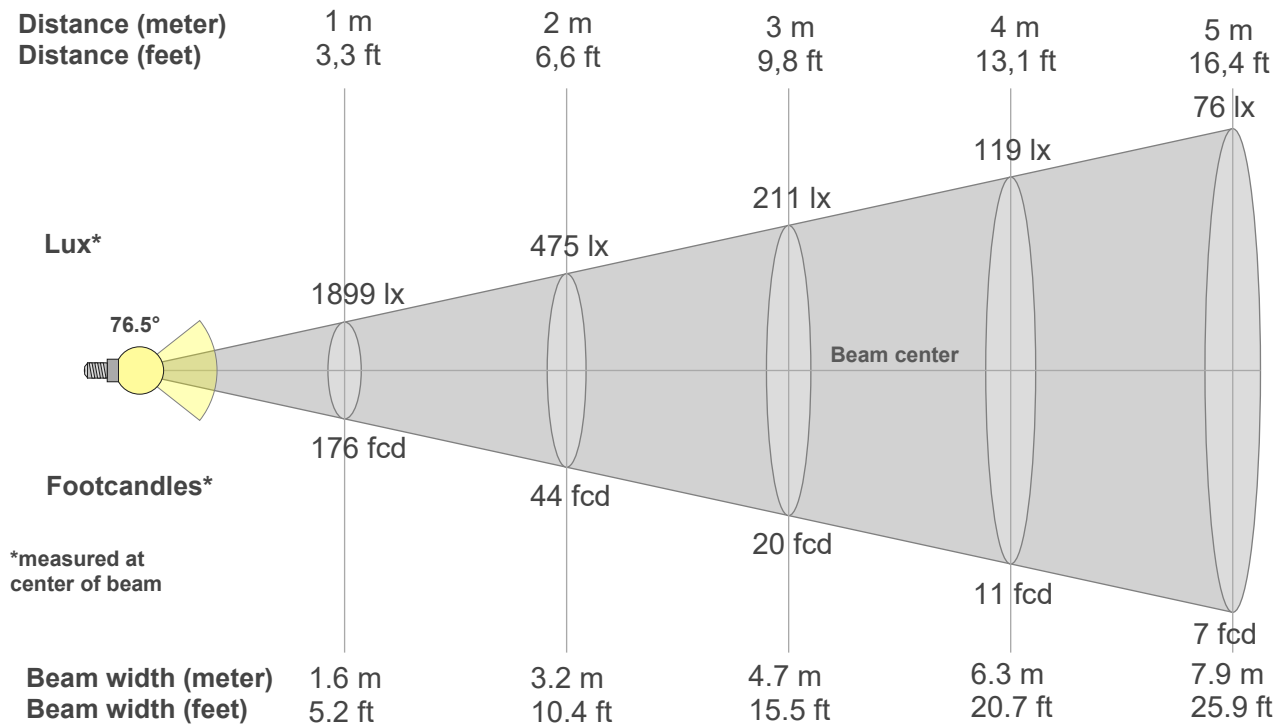
Fidelity index Rf

Rg 97.4

Gamut index Rg

Hue Bin	R _f	Graphic shifts (%)	
		Chroma	Hue
1	80	-11%	-2%
2	80	-9%	7%
3	75	-3%	13%
4	84	3%	10%
5	89	7%	6%
6	89	6%	-3%
7	83	0%	-11%
8	91	-3%	-5%
9	88	-7%	-1%
10	84	-7%	7%
11	80	-3%	14%
12	84	6%	6%
13	88	7%	-4%
14	81	7%	-13%
15	82	0%	-11%
16	78	-8%	-16%





Beam intensities from 1-20m

1m	2m	3m	4m	5m	6m	7m	8m	9m	10m	11m	12m	13m	14m	15m	16m	17m	18m	19m	20m
3.3ft	6.6ft	9.8ft	13.1ft	16.4ft	19.7ft	23ft	26.2ft	29.5ft	32.8ft	36.1ft	39.4ft	42.7ft	45.9ft	49.2ft	52.5ft	55.8ft	59.1ft	62.3ft	65.6ft
1899lx	475lx	211lx	119lx	76lx	53lx	39lx	30lx	23lx	19lx	16lx	13lx	11lx	10lx	8lx	7lx	7lx	6lx	5lx	5lx
176.4fcd	44.1fcd	19.6fcd	11fcd	7.1fcd	4.9fcd	3.6fcd	2.8fcd	2.2fcd	1.8fcd	1.5fcd	1.2fcd	1fcd	0.9fcd	0.8fcd	0.7fcd	0.6fcd	0.5fcd	0.5fcd	0.4fcd

Intensities in 0° c-plane

0°	5°	10°	15°	20°	25°	30°	35°	40°	45°	50°	55°	60°	65°	70°	75°	80°	85°	90°	95°
1899	1879	1818	1724	1595	1442	1265	1041	775	502	296	196	147	109	73	41	20	6	0	0
100%	99%	96%	91%	84%	76%	67%	55%	41%	26%	16%	10%	8%	6%	4%	2%	1%	0%	0%	0%

Intensities in 90° c-plane

0°	5°	10°	15°	20°	25°	30°	35°	40°	45°	50°	55°	60°	65°	70°	75°	80°	85°	90°	95°
1899	1879	1819	1727	1599	1452	1283	1066	807	537	320	211	159	119	80	46	23	8	1	0
100%	99%	96%	91%	84%	76%	68%	56%	42%	28%	17%	11%	8%	6%	4%	2%	1%	0%	0%	0%

Intensities in 180° c-plane

0°	5°	10°	15°	20°	25°	30°	35°	40°	45°	50°	55°	60°	65°	70°	75°	80°	85°	90°	95°
1899	1879	1818	1722	1593	1441	1266	1043	780	504	303	208	159	119	83	48	26	9	1	0
100%	99%	96%	91%	84%	76%	67%	55%	41%	27%	16%	11%	8%	6%	4%	3%	1%	0%	0%	0%

Intensities in 270° c-plane

0°	5°	10°	15°	20°	25°	30°	35°	40°	45°	50°	55°	60°	65°	70°	75°	80°	85°	90°	95°
1899	1879	1823	1733	1605	1459	1285	1065	798	520	310	206	154	114	76	43	22	7	0	0
100%	99%	96%	91%	85%	77%	68%	56%	42%	27%	16%	11%	8%	6%	4%	2%	1%	0%	0%	0%

Beam angle 50%	Field angle 10%	Cutoff angle 2,5%	Intensity ratio in 120° cone	Intensity ratio in 90° cone
76.5°	114.9°	149.5°	93.9%	79.2%