

Light efficiency:

101 Lumen/Watt

Light quality:

CRI: 81.7

Color temperature:

2986 K

Output: 3141 lm

Peak: 2786 cd

Power: 31.0 W

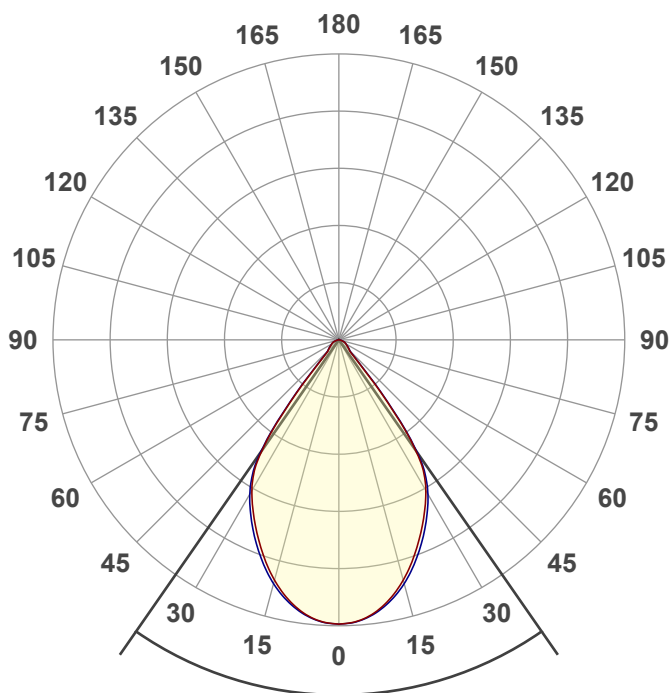
PF: 0.98



BETA-4Q-SW-35LM-30K-80-D65-WH-WH

Date and time:

9/14/2022 9:36:40 AM



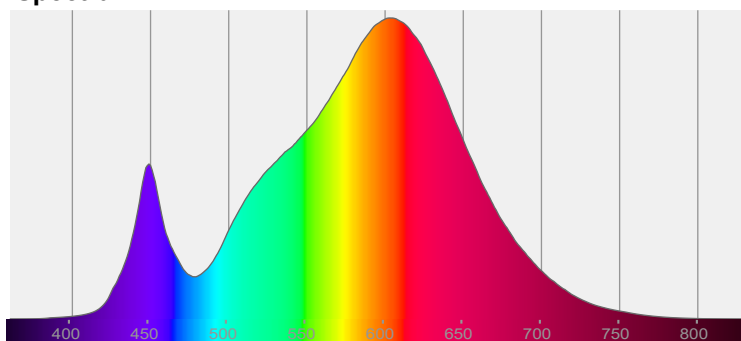
Beam angle

69.6°

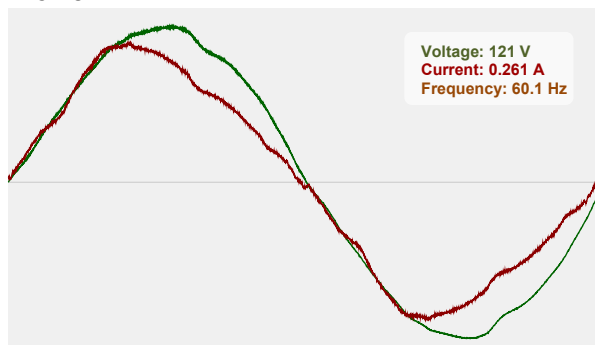


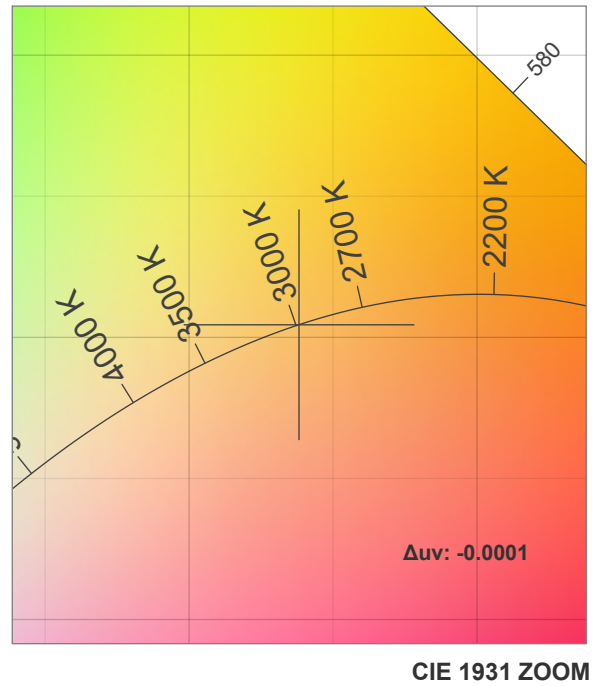
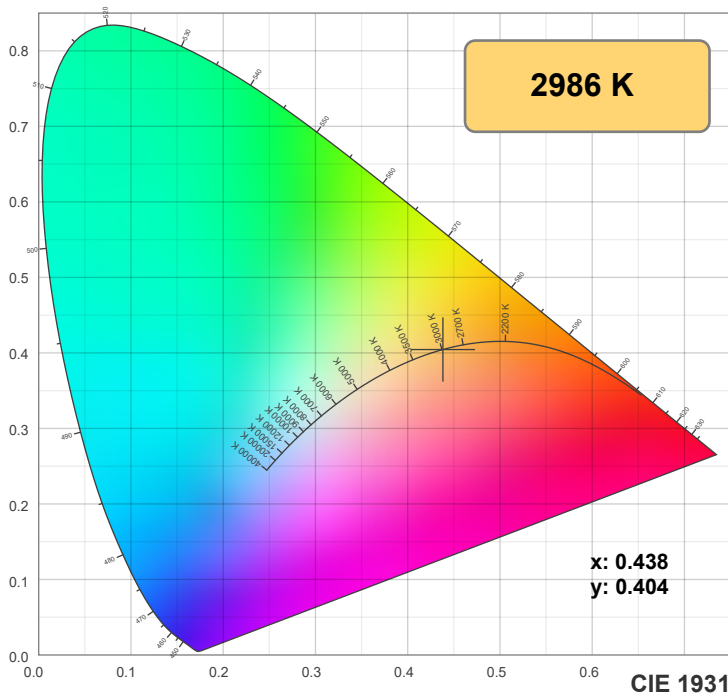
CIE 1931  
x: 0.438  
y: 0.404

Spectra

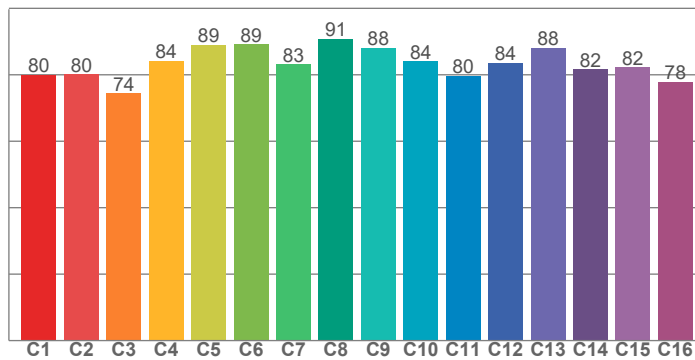


Power

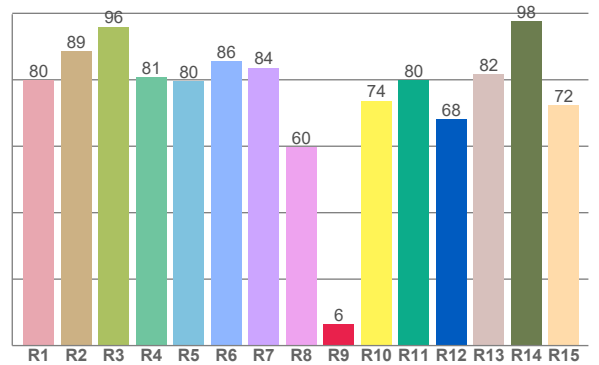




TM30: 83.2



CRI: 81.7 (R1-R8)



CRI R values, only R1-R8 are used to calculate final CRI value

R1	R2	R3	R4	R5	R6	R7	R8	R9	R10	R11	R12	R13	R14	R15
79.9	88.6	95.9	80.8	79.6	85.6	83.6	59.7	6.5	73.7	79.8	68.1	81.8	97.6	72.2

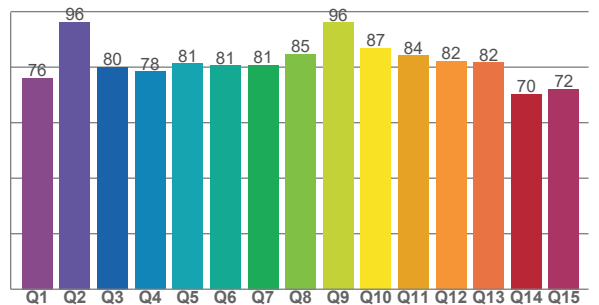
TM30 C values, 16 binned values out of total of 99 C values

C1	C2	C3	C4	C5	C6	C7	C8	C9	C10	C11	C12	C13	C14	C15	C16
79.9	80.1	74.4	84.2	89.0	89.1	83.1	90.9	88.1	84.1	79.7	83.6	88.1	81.7	82.2	77.9

CQS Q values

Q1	Q2	Q3	Q4	Q5	Q6	Q7	Q8	Q9	Q10	Q11	Q12	Q13	Q14	Q15
76.1	96.2	80.1	78.4	81.3	80.6	80.7	84.7	96.0	86.8	84.1	82.2	81.7	70.4	72.2

CQS: 80.7



## Color parameters

Color temperature	Color rendering index	Red component	Color fidelity	Color gamut	Color quality scale	Color coordinate cie 1931	Color coordinate cie 1931	Color coordinate	Color coordinate	Color deviation from black body
CCT	CRI	CRI R9	TM30 Rf	TM30 Rg	CQS	x	y	u	v	Δuv
2986 K	81.7	6.5	83.2	97.7	80.7	0.438	0.404	0.251	0.348	-0.0001

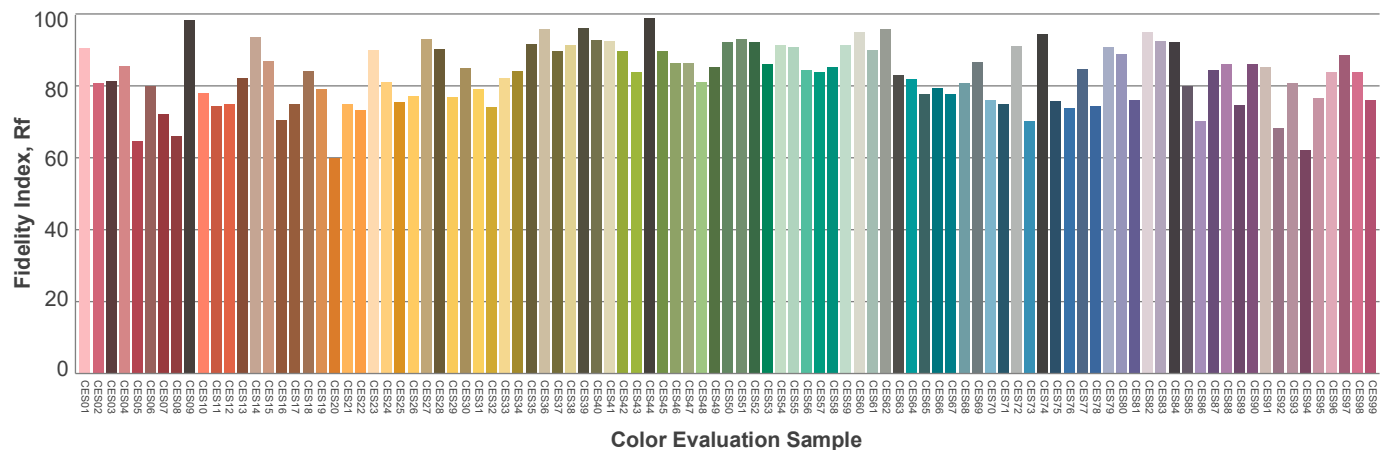
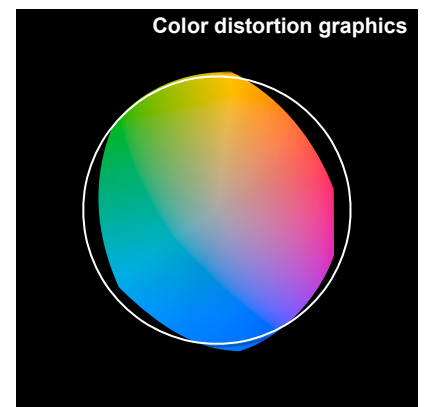
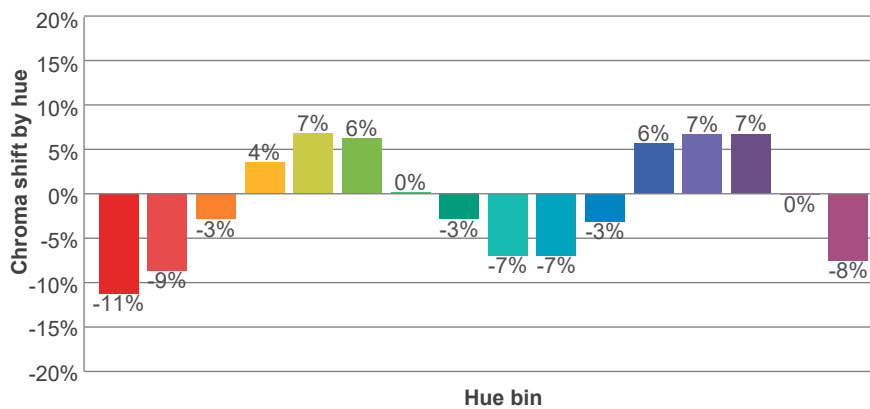
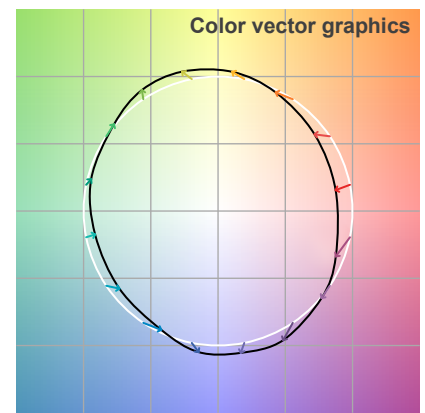
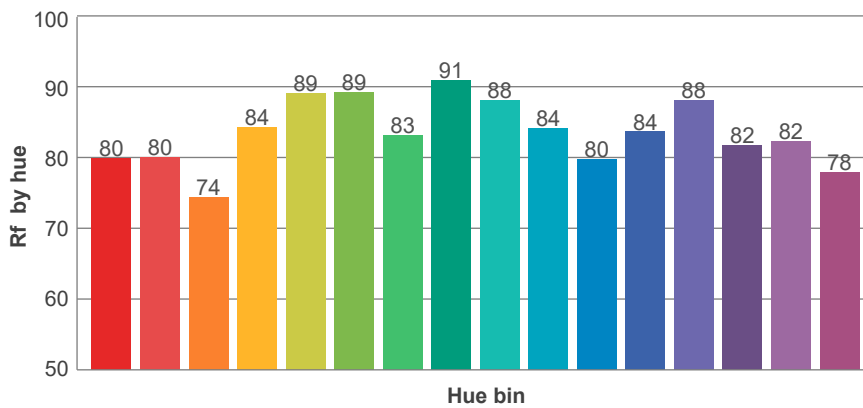
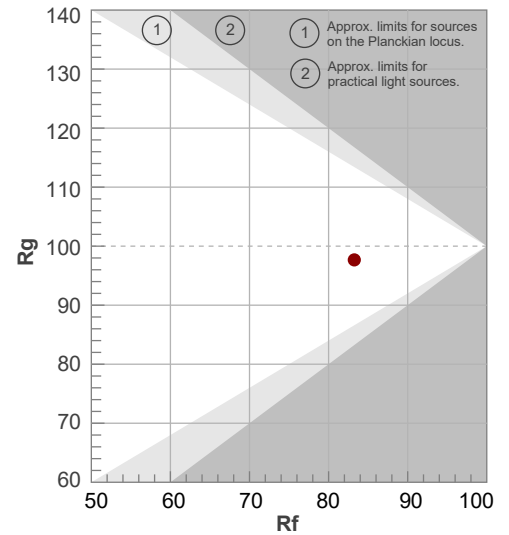
**Rf 83.2**

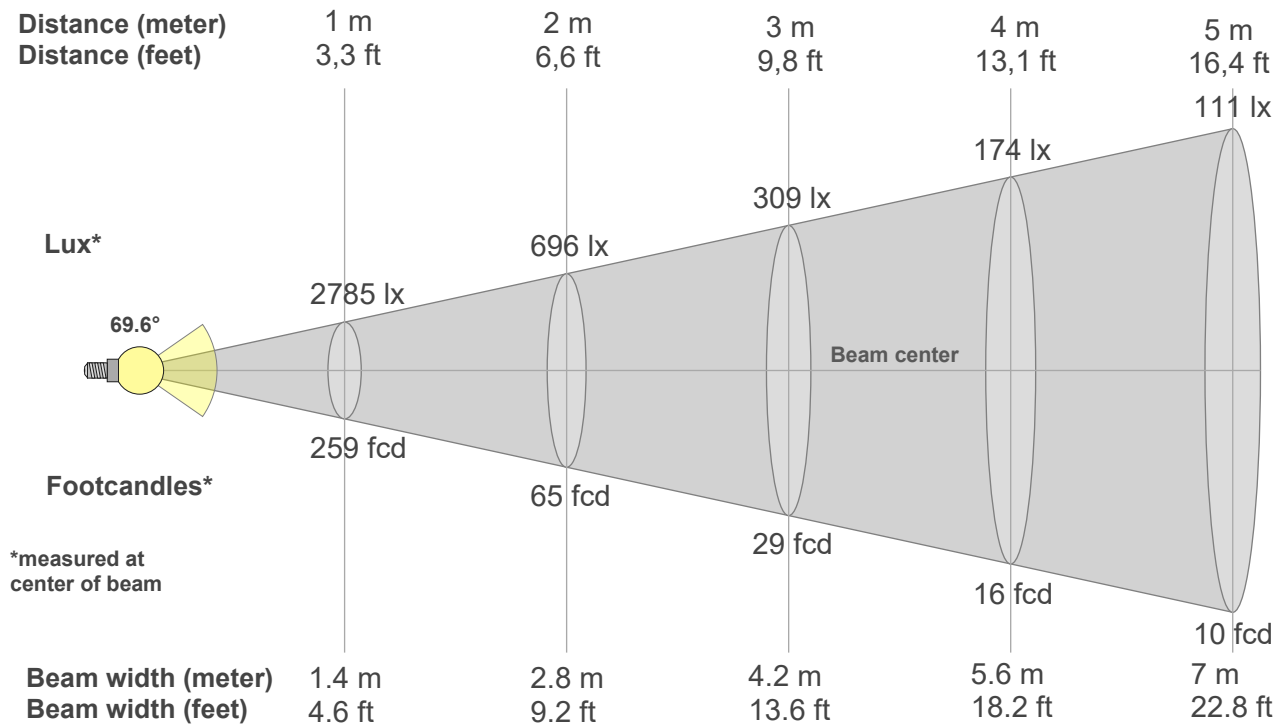
Fidelity index Rf

**Rg 97.7**

Gamut index Rg

Hue Bin	R <sub>f</sub>	Graphic shifts (%)	
		Chroma	Hue
1	80	-11%	-2%
2	80	-9%	8%
3	74	-3%	13%
4	84	4%	10%
5	89	7%	6%
6	89	6%	-3%
7	83	0%	-11%
8	91	-3%	-5%
9	88	-7%	-1%
10	84	-7%	7%
11	80	-3%	14%
12	84	6%	6%
13	88	7%	-4%
14	82	7%	-13%
15	82	0%	-11%
16	78	-8%	-16%





#### Beam intensities from 1-20m

1m	2m	3m	4m	5m	6m	7m	8m	9m	10m	11m	12m	13m	14m	15m	16m	17m	18m	19m	20m
3.3ft	6.6ft	9.8ft	13.1ft	16.4ft	19.7ft	23ft	26.2ft	29.5ft	32.8ft	36.1ft	39.4ft	42.7ft	45.9ft	49.2ft	52.5ft	55.8ft	59.1ft	62.3ft	65.6ft
2785lx	696lx	309lx	174lx	111lx	77lx	57lx	44lx	34lx	28lx	23lx	19lx	16lx	14lx	12lx	11lx	10lx	9lx	8lx	7lx
258.7fcd	64.7fcd	28.7fcd	16.2fcd	10.3fcd	7.2fcd	5.3fcd	4fcd	3.2fcd	2.6fcd	2.1fcd	1.8fcd	1.5fcd	1.3fcd	1.1fcd	1fcd	0.9fcd	0.8fcd	0.7fcd	0.6fcd

#### Intensities in 0° c-plane

0°	2°	4°	6°	8°	10°	12°	14°	16°	18°	20°	22°	24°	26°	28°	30°	32°	34°	36°	38°
2785	2777	2758	2726	2681	2625	2557	2478	2392	2300	2203	2104	2005	1906	1806	1701	1578	1412	1145	774
100%	100%	99%	98%	96%	94%	92%	89%	86%	83%	79%	76%	72%	68%	65%	61%	57%	51%	41%	28%

#### Intensities in 90° c-plane

0°	2°	4°	6°	8°	10°	12°	14°	16°	18°	20°	22°	24°	26°	28°	30°	32°	34°	36°	38°
2785	2778	2761	2732	2693	2642	2581	2510	2431	2344	2252	2156	2058	1957	1853	1742	1613	1448	1166	812
100%	100%	99%	98%	97%	95%	93%	90%	87%	84%	81%	77%	74%	70%	67%	63%	58%	52%	42%	29%

#### Intensities in 180° c-plane

0°	2°	4°	6°	8°	10°	12°	14°	16°	18°	20°	22°	24°	26°	28°	30°	32°	34°	36°	38°
2785	2777	2758	2726	2681	2625	2557	2478	2392	2300	2203	2104	2005	1906	1806	1701	1578	1412	1145	774
100%	100%	99%	98%	96%	94%	92%	89%	86%	83%	79%	76%	72%	68%	65%	61%	57%	51%	41%	28%

#### Intensities in 270° c-plane

0°	2°	4°	6°	8°	10°	12°	14°	16°	18°	20°	22°	24°	26°	28°	30°	32°	34°	36°	38°
2785	2778	2761	2732	2693	2642	2581	2510	2431	2344	2252	2156	2058	1957	1853	1742	1613	1448	1166	812
100%	100%	99%	98%	97%	95%	93%	90%	87%	84%	81%	77%	74%	70%	67%	63%	58%	52%	42%	29%

Beam angle 50%	Field angle 10%	Cutoff angle 2,5%	Intensity ratio in 120° cone	Intensity ratio in 90° cone
69.6°	88.7°	126.4°	96.7%	91.0%