



alphabet

nu
ESSENTIALS



ESSENTIAL **NOT BASIC**

AT A GLANCE **NU ESSENTIALS DOWNLIGHT**

TYPE

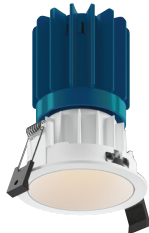


round



square

SIZE



3"



4"

LED



standard white - up to 2000 lm

CCT



2700K, 3000K, 3500K, 4000K

OPTIC



3" - 30°, 45°, 55°, 80°
4" - 30°, 40°, 60°, 80°

LENS

- no lens
- clear lens
- diffused lens
- high efficiency textured lens
- honeycomb louver

MOUNTING

- new construction with ceiling fitting plate
- insulation contact housing
- insulation contact / airtight housing
- chicago plenum housing
- retrofit, no ceiling fitting plate

DIMMING

- 0-10V dimming to 1%
- leading & trailing edge (Triac/ELV) dimming to 1%

AT A GLANCE
NU ESSENTIALS WALL WASH

TYPE



round



square

SIZE



3"



4"

LED



standard white - up to 1280 lm

CCT



2700K, 3000K, 3500K, 4000K

MOUNTING

new construction with ceiling fitting plate
 insulation contact housing
 insulation contact / airtight housing
 chicago plenum housing
 retrofit, no ceiling fitting plate

DIMMING

0-10V dimming to 1%
 leading & trailing edge (Triac/ELV) dimming to 1%

AT A GLANCE
NU ESSENTIALS ADJUSTABLE

TYPE

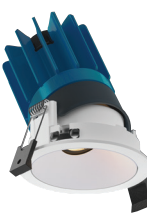


round



square

SIZE



3"



4"

LED



standard white - up to 2000 lm

CCT



2700K, 3000K, 3500K, 4000K

OPTIC



3" - 30°, 45°, 55°
 4" - 30°, 40°, 60°

LENS

no lens
 clear lens
 diffused lens
 high efficiency textured lens
 honeycomb louver

MOUNTING

new construction with ceiling fitting plate
 insulation contact housing
 insulation contact / airtight housing
 chicago plenum housing
 retrofit, no ceiling fitting plate

DIMMING

0-10V dimming to 1%
 leading & trailing edge (Triac/ELV) dimming to 1%



ANNIVERSARY

88 MAXWELL IRVINE, CA 92618 714.259.9959



AlphabetLighting.com

