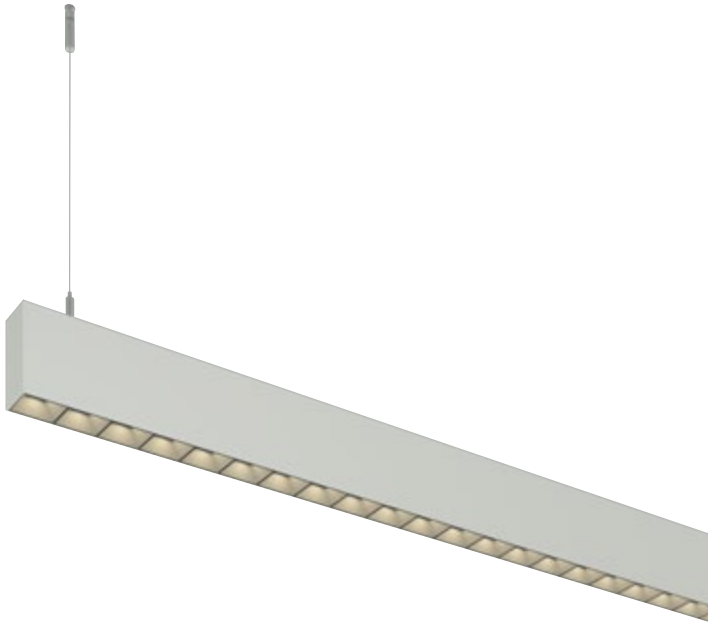


ZETA

Profile Linear System Accent Light

CASAMBI

eldoLED
your product | our drive



FEATURES

- Discrete 1-7/8" profile designed for even illumination and low glare
- Power supply and lighting control fully integrated
- 1465 lumens per foot (direct/indirect)
- 950 watts per power feed (52' with max output)
- 15° and 30° direct beam options plus 35° x 15° elliptical
- UGR <10
- Multiple mounting and finish options available

DIMMING AND CONTROLS

- Flicker free 0-10V dimming to 1%
- Casambi Bluetooth dimming to 1%

CONSTRUCTION

- Extruded aluminum housing
- PMMA lens
- SVT power cord (pendant mounting)

ELECTRICAL/CONTROLS

- 120V-277V
- Power factor ≥ 0.9
- 2kV driver input surge protection
- Remote and Integral (ITS) emergency test switch
- 10W EM 90min battery

LISTING

- CSAus Listed to UL1598, cCSA listed to CSA C22.2 #250.0
- Suitable for dry locations only
- 5-year limited warranty

LED INFO

- General Light & Uplight Pendant: SAMSUNG SMD LM218B+: 90 CRI: SDCM: 3-Step MacAdam Ellipse, Lumen Maintenance: L₇₀ 50,000 hrs

PROJECT INFORMATION		
JOB NAME		TYPE
ORDERING CODE		

ORDERING CODE

SERIES	ZETA-PLS	Zeta profile linear system
TYPE	AL	accent light insert
SIZE	2 4 8 CR-X	2' 4' 8' custom run - X (select length in feet)reference length table
LED	SW	standard white
DIRECT/INDIRECT	D06 D08 D10 ID03 ¹ ID04 ¹ ID05 ¹	direct output,550 lm per foot, 9 watts direct output,740 lm per foot, 12 watts direct output,970 lm per foot, 17 watts indirect output,256 lm per foot, 3 watts indirect output,357 lm per foot, 4 watts indirect output,495 lm per foot, 5 watts Select one option for direct only or two for direct/indirect.
CCT & LM MULTIPLIER	30K 35K	3000K (1.00) 3500K (1.07)
CRI	90	90 CRI
LENS	15D 30D E	15 degrees 30 degrees elliptical beam spread 35° x 15°
DIMMING	UNV-DIM10 UNV-CAS	120V-277V integrated driver, flicker free 0-10V dimming to 1% 120V-277V integrated driver and Bluetooth Casambi control, dimming to 1%
MOUNTING OPTIONS	P R S	pendant recessed surface mount
BEZEL COLOR	BK	black
FINISH	WH BK	white black
ELECTRICAL OPTIONS	EM10-RTS-R EM10-RTS-M EM10-RTS-L EM10-ITS-R EM10-ITS-M EM10-ITS-L RINV-R RINV-M RINV-L	emergency battery backup, 90 min. at 10 watts. remote test switch, right illumination emergency battery backup, 90 min. at 10 watts. remote test switch, middle illumination emergency battery backup, 90 min. at 10 watts. remote test switch, left illumination emergency battery backup, 90 min. at 10 watts. integrated test switch, right illumination emergency battery backup, 90 min. at 10 watts. integrated test switch, middle illumination emergency battery backup, 90 min. at 10 watts. integrated test switch, left illumination remote inverter circuit, right illumination. (inverter by others) remote inverter circuit, middle illumination. (inverter by others) remote inverter circuit, left illumination. (inverter by others) emergency solution offered in 8 foot increments, for additional run lengths consult factory.

ORDERING CODE

Follow the steps to specify your fixture, example:

ZETA - PLS - AL - CR48 - SW - D10 - ID05 - 30K - 90 - 15D - UNV - DIM10 - P - BK - BK

NOTES

1. Independent circuits for dual dimming control.

AL LENGTH CODE (NOMINAL FEET)	LENGTH (INCHES)	DIRECT WATTAGE (W)	INDIRECT WATTAGE (W)	NUMBER OF SEGMENTS
2	23.875	34	N/A	1
4	47.5	68	20	1
6	71.125	102	20	2
8	94.75	136	40	1
10	118.375	170	40	2
12	142	204	40	2
16	189.25	272	60	2
24	283.75	408	80	3
32	378.25	448	120	3
40	472.75	680	140	5
48	567.25	816	160	6
56	661.625	952	200	7

ILLUMINATED LENGTH (INCHES)	WATTAGE (W)	DELIVERED LUMENS (LM)
24	10	715

alphabet

PROJECT INFORMATION		
JOB NAME		TYPE
ORDERING CODE		

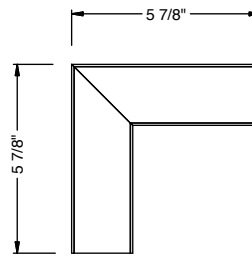
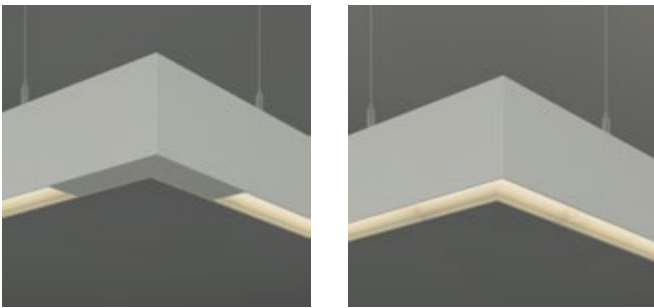
ACCESSORIES

Accessories Ordering Code

ZETA-PLS-LCON-30K-90-WH	L-Connector, 3000K, 90CRI, white
ZETA-PLS-LCON-30K-90-BK	L-Connector, 3000K, 90CRI, black
ZETA-PLS-LCON-35K-90-WH	L-Connector, 3500K, 90CRI, white
ZETA-PLS-LCON-35K-90-BK	L-Connector, 3500K, 90CRI, black
ZETA-PLS-LCON-BLANK-WH	L-Connector, blank, white
ZETA-PLS-LCON-BLANK-BK	L-Connector, blank, black
ZETA-PLS-SURFACE-KIT-WH ¹	Surface mount kit with J-box cover, white
ZETA-PLS-SURFACE-KIT-BK ¹	Surface mount kit with J-box cover, black
ZETA-PLS-SURFACE-CLAMP ¹	Surface mount clamp, 2 pcs.
ZETA-PLS-SUSPENSION-KIT ¹	Suspension mount with cable, 2 pcs.
ZETA-PLS-RECESSED-KIT ¹	Recessed mount mud up brackets, 2 pcs.

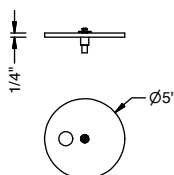
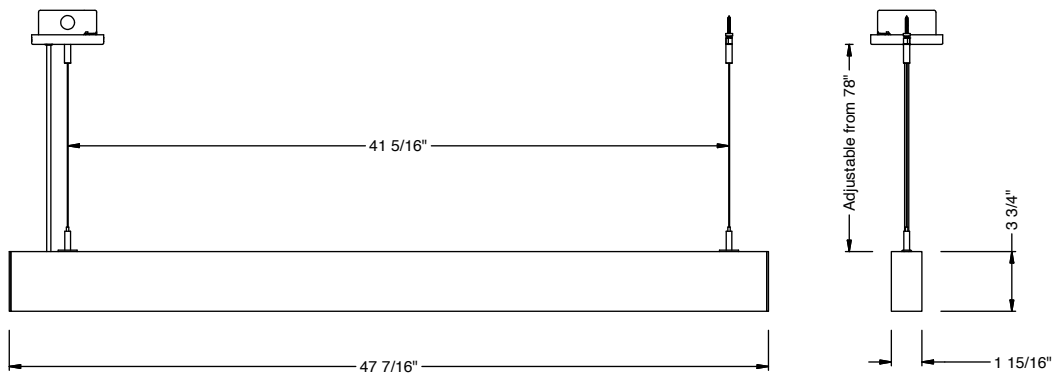
NOTES

1. Mounting accessories are only for additional or spare circumstances. All systems include adequate quantity of mounting components.



MOUNTING OPTIONS

PENDANT

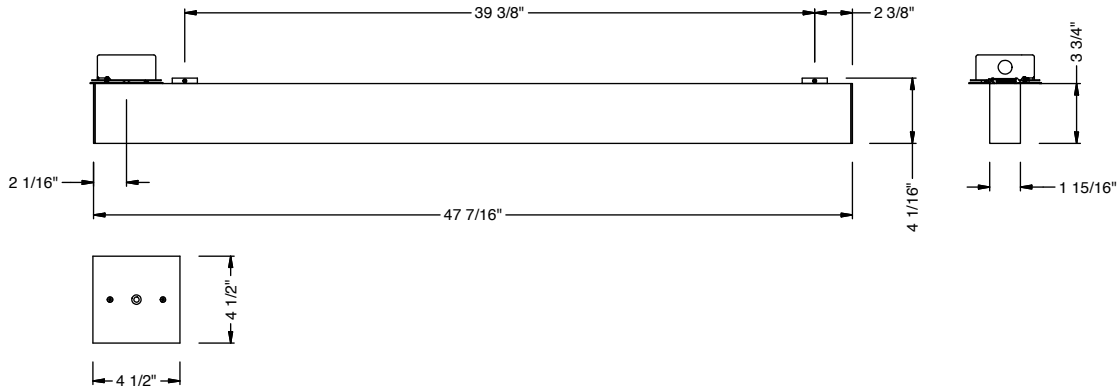


alphabet

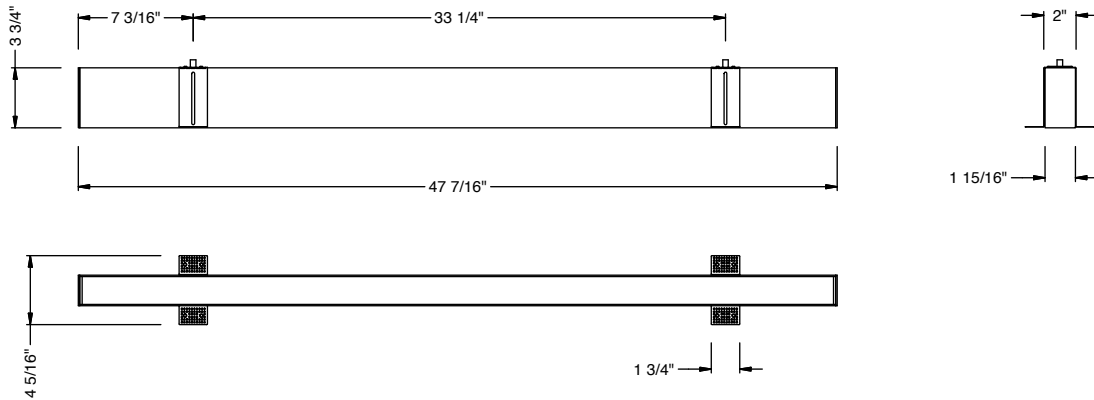
PROJECT INFORMATION		
JOB NAME		TYPE
ORDERING CODE		

MOUNTING OPTIONS (CONTINUED)

SURFACE



RECESSED

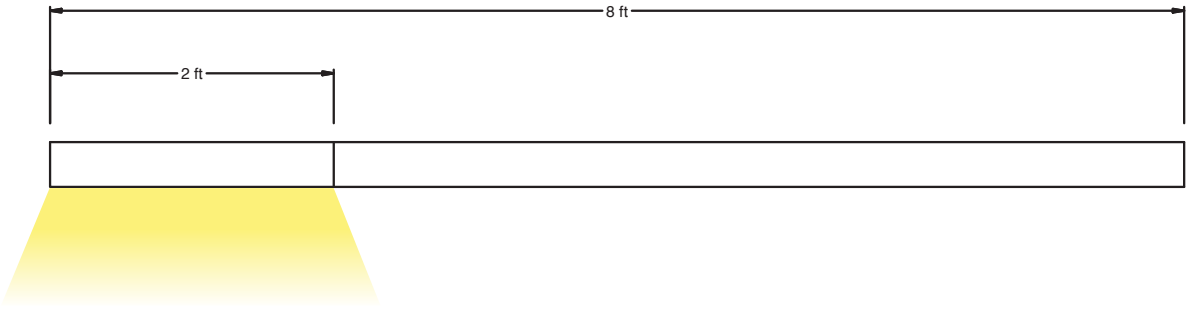


alphabet

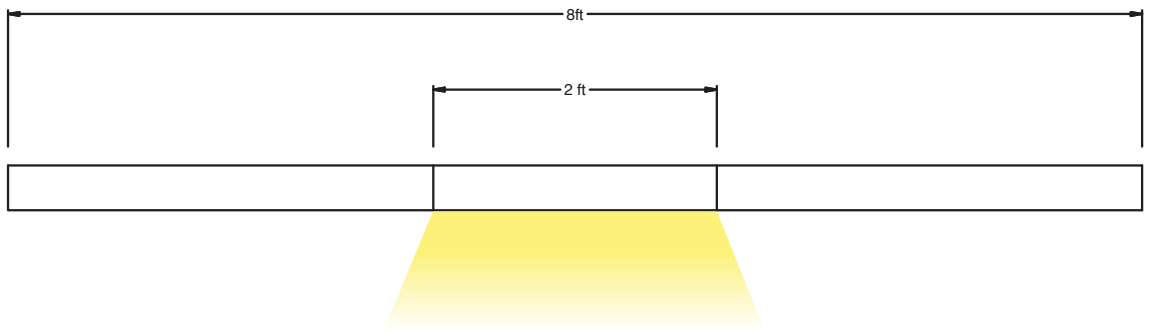
PROJECT INFORMATION		
JOB NAME		TYPE
ORDERING CODE		

EMERGENCY MOUNTING OPTIONS

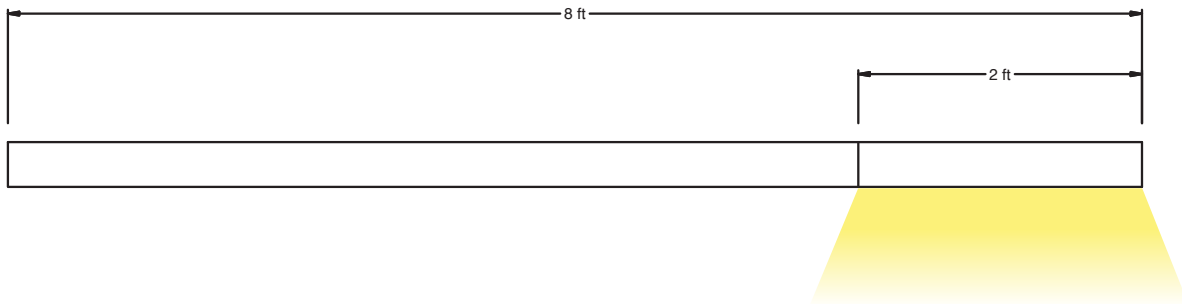
LEFT ILLUMINATION



MIDDLE ILLUMINATION



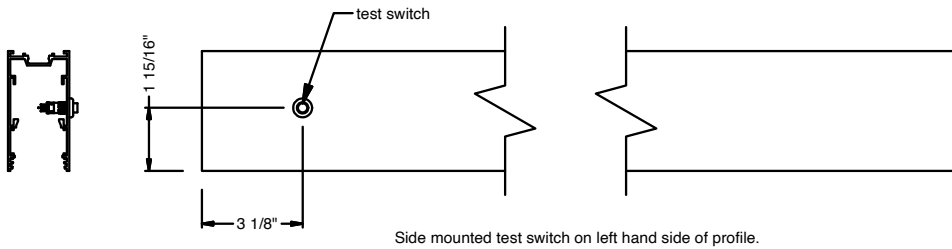
RIGHT ILLUMINATION



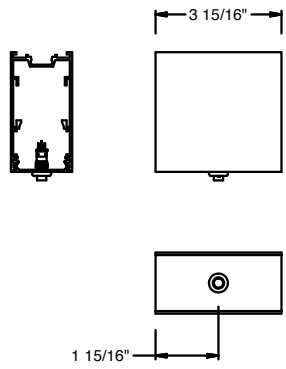
PROJECT INFORMATION		
JOB NAME		TYPE
ORDERING CODE		

EMERGENCY MOUNTING OPTIONS (CONTINUED)

PENDANT AND SURFACE MOUNT



RECESSED MOUNT



Integrated test switch 4" extension.
 Note: must add additional length to run.

alphabet

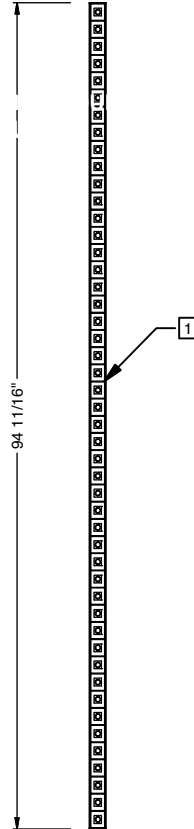
PROJECT INFORMATION		
JOB NAME		TYPE
ORDERING CODE		

DESIGN GUIDE

NOTES:

Design guides are for reference only. Ordering code: dimming, mounting and finish options can be changed for additional design examples. Each ordering code is a segment of a system, all necessary hardware will be provided for on field installation.

8 FT - LINEAR



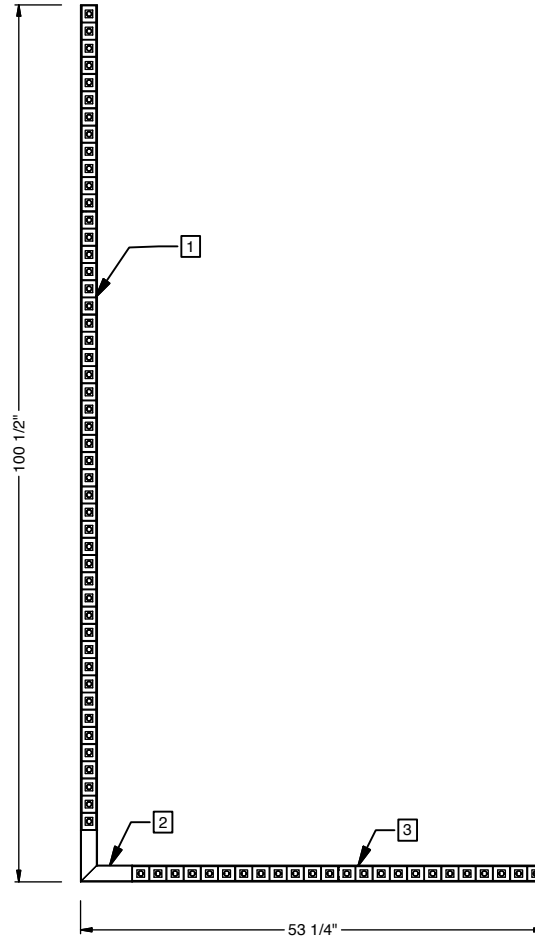
1. ZETA-PLS-AL-8-SW-D10-30K-90-15D-UNV-DIM10-P-BK-BK (Accent Light, 8ft run)

alphabet

PROJECT INFORMATION			
JOB NAME		TYPE	
ORDERING CODE			

DESIGN GUIDE (CONTINUED)

8X4 FT - L



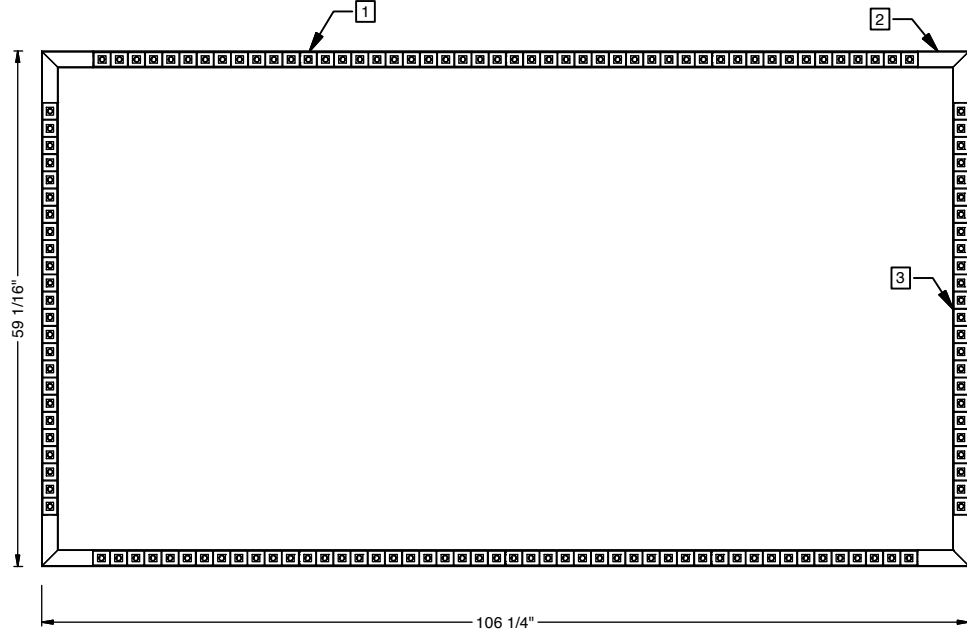
1. ZETA-PLS-AL-8-SW-D10-30K-90-15D-UNV-DIM10-P-BK-BK (Accent Light, 8ft run)
2. ZETA-PLS-LCON-BLANK-BK (L-Connector, Black)
3. ZETA-PLS-AL-4-SW-D10-30K-90-15D-UNV-DIM10-P-BK-BK (Accent Light, 4ft run)

alphabet

PROJECT INFORMATION		
JOB NAME		TYPE
ORDERING CODE		

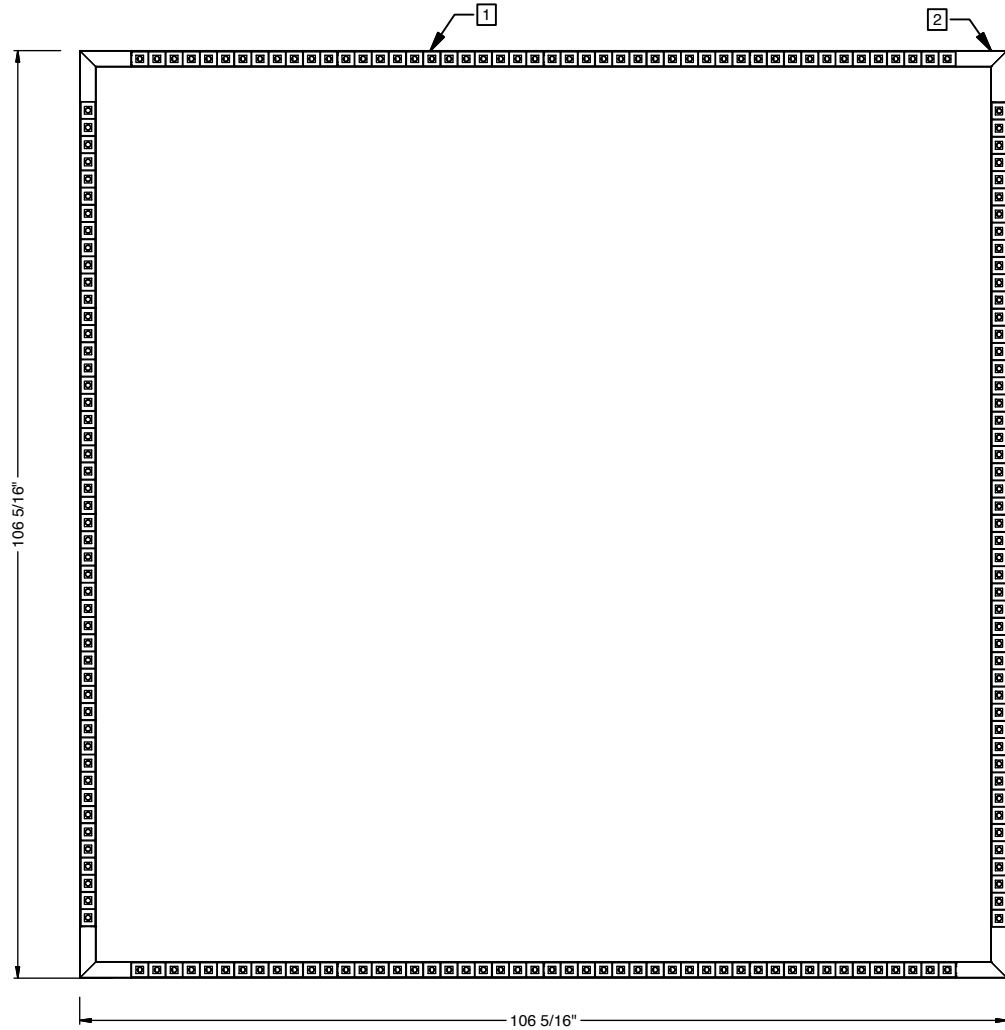
DESIGN GUIDE (CONTINUED)

8X4 FT - RECTANGLE



1. 2X ZETA-PLS-AL-8-SW-D10-30K-90-30D-UNV-DIM10-P-BK-BK (Accent Light, 8ft run)
2. 4X ZETA-PLS-LCON-BLANK-BK (L-Connector, Black)
3. 2X ZETA-PLS-AL-4-SW-D10-30K-90-30D-UNV-DIM10-P-BK-BK (Accent Light, 4ft run)

8X8 FT - SQUARE



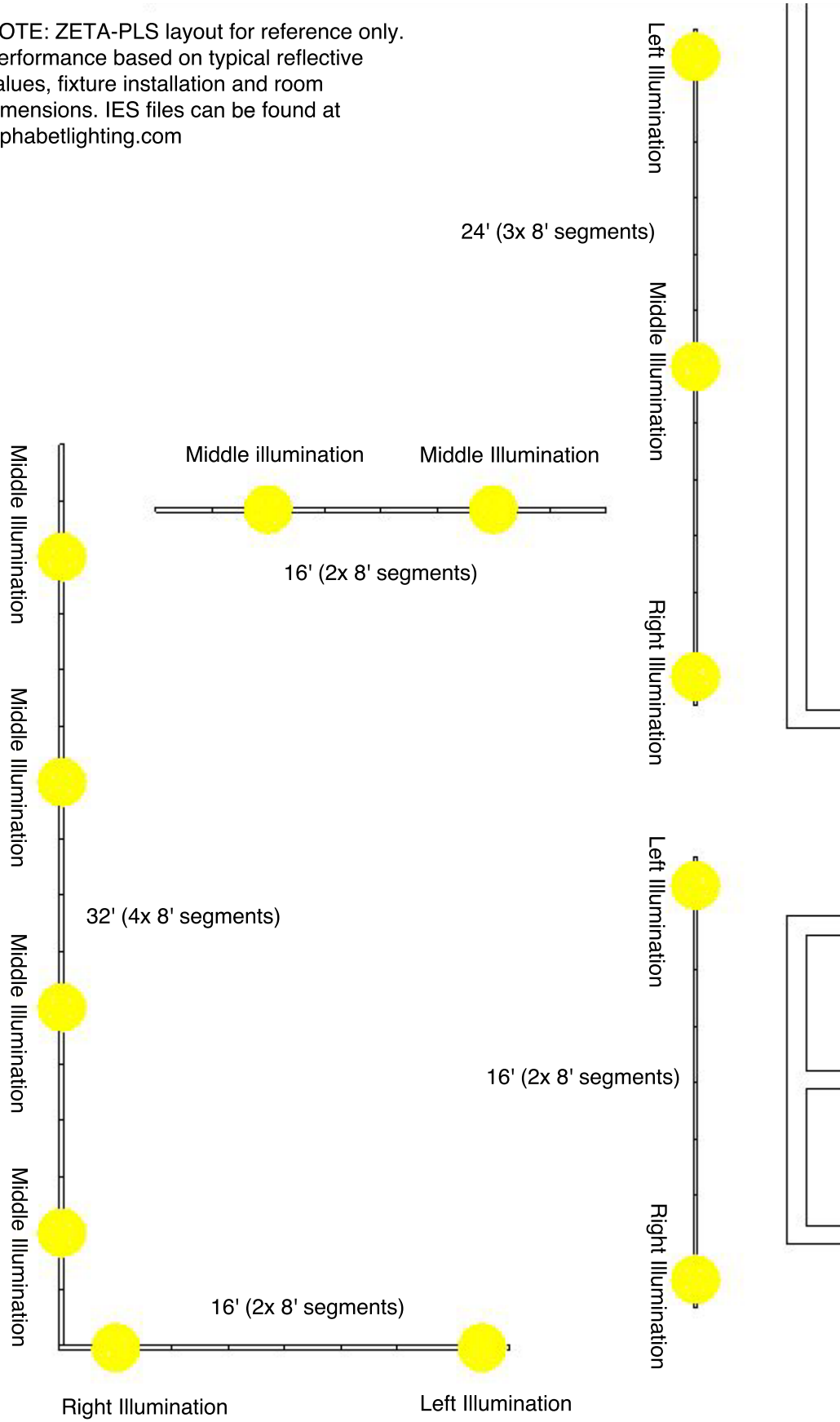
1. 4X ZETA-PLS-AL-8-SW-D10-30K-90-15D-UNV-DIM10-P-BK-BK (Accent Light, 8ft run)
2. 4X ZETA-PLS-LCON-BLANK-BK (L-Connector, Black)

alphabet

PROJECT INFORMATION		
JOB NAME		TYPE
ORDERING CODE		

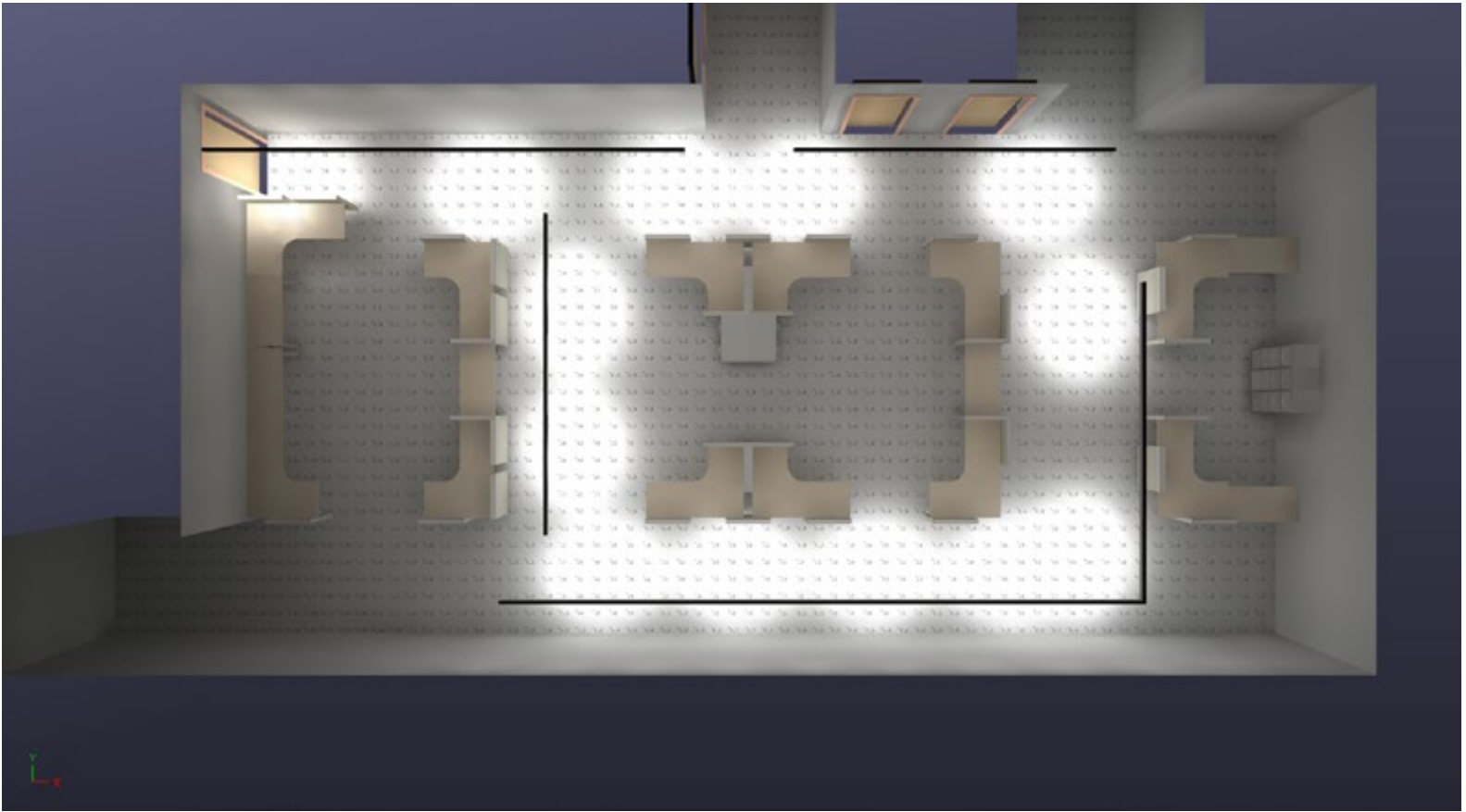
EMERGENCY DESIGN GUIDE

NOTE: ZETA-PLS layout for reference only. Performance based on typical reflective values, fixture installation and room dimensions. IES files can be found at alphabetlighting.com



PROJECT INFORMATION		
JOB NAME		TYPE
ORDERING CODE		

EMERGENCY DESIGN GUIDE (CONTINUED)



PROJECT INFORMATION		
JOB NAME		TYPE
ORDERING CODE		

EMERGENCY DESIGN GUIDE (CONTINUED)

