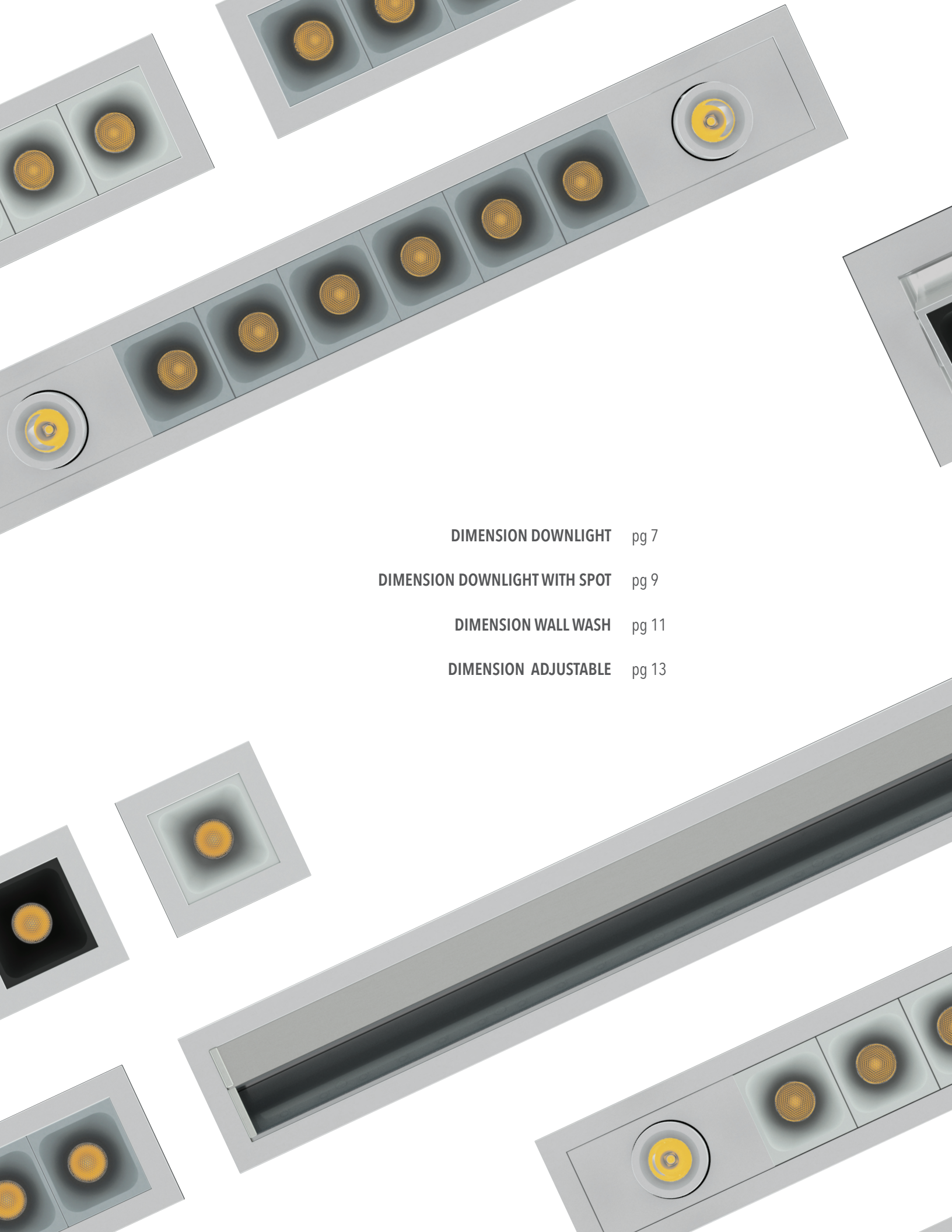


DIMENSION

alphabet



DIMENSION DOWNLIGHT pg 7

DIMENSION DOWNLIGHT WITH SPOT pg 9

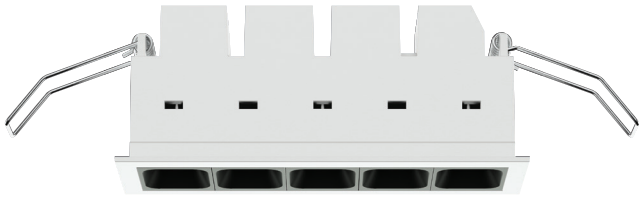
DIMENSION WALL WASH pg 11

DIMENSION ADJUSTABLE pg 13



DIMENSION

Dimension offers smooth, quality light with precision optical performance. With miniature cells regressed into a discreet, linear, housing for a quiet ceiling, Dimension offers versatility in design breaking from traditional downlight features. With a variety of options including trim, trimless, bezel color and beam spreads, Dimension will meet your project needs. Dimension offers many sizes that feature downlights, adjustable tilt and arguably the best wall wash on the market.



DOWNLIGHT

DF1



DF2



DF3



DF5



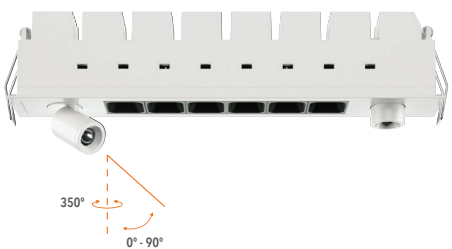
DF10



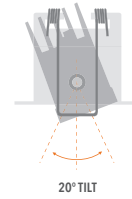
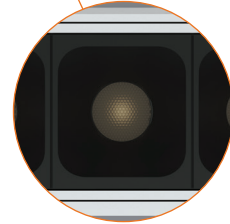
DFS3



DFS6



ADJUSTABLE



20° TILT

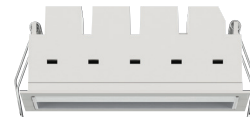
**ADJUSTABLE
DA5**



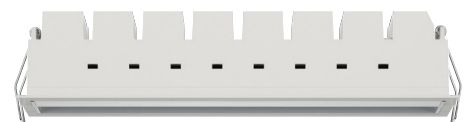
DA10

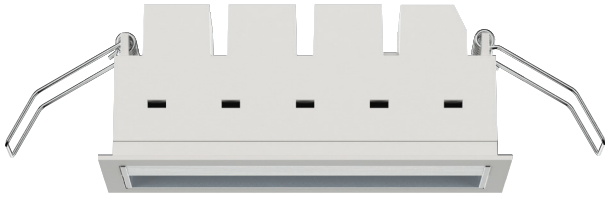


**WALL WASH
DW5**



DW10





WALL WASH



TRIMLESS



1. DOWNLIGHT TRIMLESS - DFT10



2. DOWNLIGHT TRIMLESS - DFT5



3. WALL WASH TRIMLESS - DWT5



4. WALL WASH TRIMLESS - DWT10

BEZEL



BLACK



WHITE



MATTE CHROME

OPTICAL COMFORT

Recessed downlights have become the go to for most general lighting applications. The optical comfort of DIMENSION through the perfect combination of lens and bezel will silence glare points. DIMENSION offers a balance of powerful lighting with a visually comfortable space.

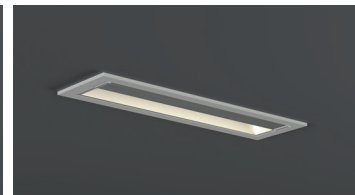
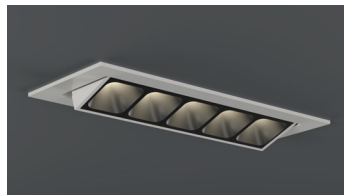
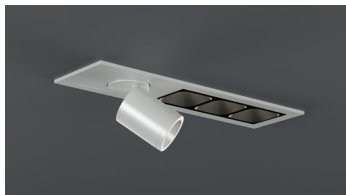
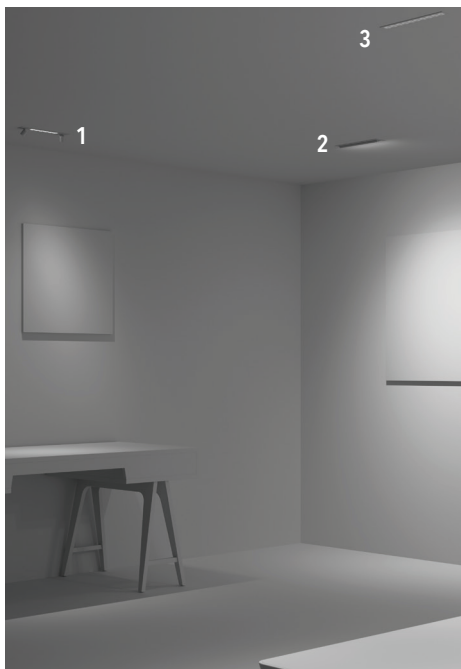
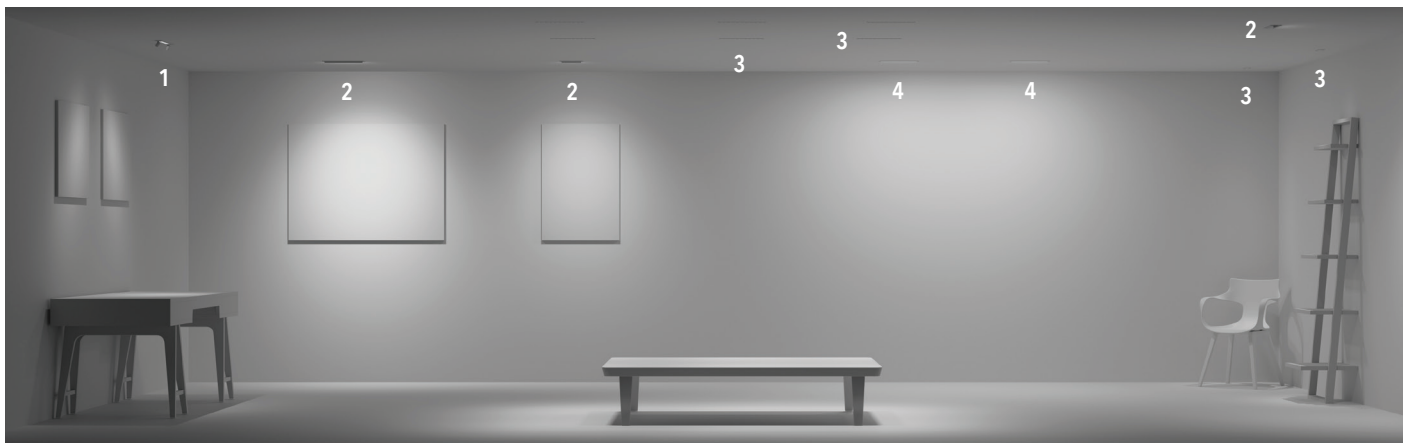
COMPLETE CONTROL

DIMENSION has several options for dimming and controls. It is compatible with all 0-10v systems for universal voltage 120-277v and Triac / ELV. DIMENSION also works with most wireless Bluetooth® technologies as well as PoE (Power over Ethernet).

APPLICATIONS

DIMENSION is a complete system that allows for an end-to-end downlighting design. With multiple sizes, outputs and finishes.

- DFx - fixed units give generous even distributions with great cutoff.
- DWx - wall wash performance is unrivaled. The best in its category among others. Flush with the ceiling with amazing performance
- DAx - adjustable gives options regardless of placement with a 20° tilt.
- DFSx - fixed with retractable, adjustable spots for additional versatility to accent wall art or just a directed graze



1. DOWNLIGHT WITH SPOT

2. ADJUSTABLE

3. DOWNLIGHT

4. WALL WASH

REMOTE DRIVER

REMOTE DRIVER ORDERING CODE

Follow the steps to specify your fixture, example: DMNREM - UNV - DIM10 - 30

PART NUMBER	VOLTAGE & DIMMING
DMNREM remote driver	
UNV-DIM10-30	120V-277V remote driver, flicker free 0-10V dimming to 1%; 1-30W, 2-42.9Vdc output
UNV-DIM10Z-30	120V-277V remote driver, flicker free 0-10V dimming to 0.1%; 1-30W, 2-42.9Vdc output
UNV-DIM10-50	120V-277V remote driver, flicker free 0-10V dimming to 1%; 1-50W, 1.5-55Vdc output
UNV-DIM10Z-50	120V-277V remote driver, flicker free 0-10V dimming to 0.1%; 1-50W total, 2x 1.5-55Vdc outputs
UNV-DALI-50	120V-277V remote driver, flicker free DALI dimming to 1%; 1-50W, 1.5-55Vdc output
UNV-DALIZ-50	120V-277V remote driver, flicker free DALI dimming to 0.1%; 1-50W total, 2x 1.5-55Vdc outputs
UNV-DMX-50	120V-277V remote driver, flicker free DMX dimming to 0.1%; 1-50W total, 3x 2-55Vdc outputs
120-ELV-12	120V remote driver, leading & trailing edge dimming (Triac/ELV); 3.5-12W, 5-17Vdc output
120-ELV-25	120V remote driver, leading & trailing edge dimming (Triac/ELV); 8.4-25W, 12-36Vdc output
120-LTE-g	120V remote driver, Lutron Hi-Lume 2-Wire (Triac) dimming to 1%; 5.6-14W, 8-20Vdc output
120-LTE-h	120V remote driver, Lutron Hi-Lume 2-Wire (Triac) dimming to 1%; 10.5-26.6W, 15-38Vdc output
UNV-LUT-b	120V-277V remote driver, Lutron Hi-Lume EcoSystem dimming to 1%, Soft-on & Fade-to-Black; 21-35W, 30-50Vdc output
UNV-LUT-c	120V-277V remote driver, Lutron Hi-Lume EcoSystem dimming to 1%, Soft-on & Fade-to-Black; 14.4-26W, 20.6-37.1Vdc output
UNV-LUT-d	120V-277V remote driver, Lutron Hi-Lume EcoSystem dimming to 1%, Soft-on & Fade-to-Black; 8.4-16W, 12-22.9Vdc output
UNV-LUTP-20	120V-277V remote driver, Lutron Hi-Lume Premier EcoSystem dimming to 0.1%, Soft-on & Fade-to-Black; 7-20W, 10-25.6Vdc output
UNV-CAS-50	120-277V remote driver, flicker free Casambi dimming to 0.1%, dim-to-dark, 1-50W, 2x 1.5-55Vdc outputs
UNV-NLT-50	120-277V remote driver, nLight control interface, standard CAT5/RJ45 connection, dimming to 0.1%, 1-50W, 2x 1.5-55Vdc outputs
48-POE-XXX ¹	48V PoE remote driver node, standard CAT5/RJ45 connection, dim-to-dark, 9-53W, 12-48Vdc output(s)

NOTE:

1. For PoE options refer to PoE spec sheet for further details or consult factory.

REMOTE POWER SUPPLY MATRIX (MIN-MAX UNITS & DIMMING RANGE)

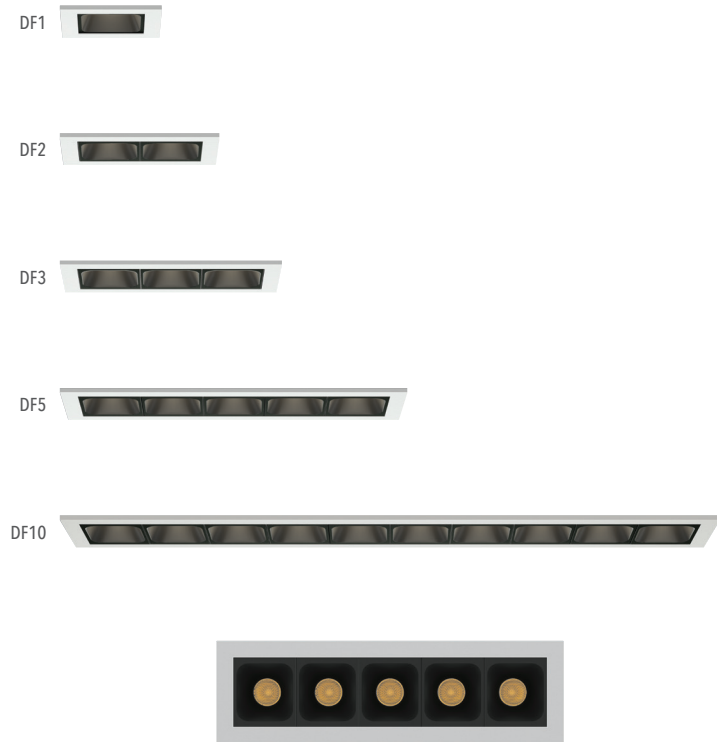
	DF1	DF2	DF3	DF5/DW5/DA5	DF10/DW10/DA10	DF3-DS1	DF6-DS2
DMNREM-UNV-DIM10-30	1 - 12	1 - 6	1 - 4	1 - 2	1	1 - 3	1
DMNREM-UNV-DIM10Z-30	1 - 12	1 - 6	1 - 4	1 - 2	1	1 - 3	1
DMNREM-UNV-DIM10-50	1 - 16	1 - 8	1 - 5	1 - 3	1	1 - 4	1 - 2
DMNREM-UNV-DIM10Z-50 ¹	1 - 21 (16)	1 - 10 (8)	1 - 7 (5)	1 - 4 (3)	2 (1)	1 - 5 (4)	1 - 2 (2)
DMNREM-UNV-DALI-50	1 - 16	1 - 8	1 - 5	1 - 3	1	1 - 4	1 - 2
DMNREM-UNV-DALIZ-50 ¹	1 - 21 (16)	1 - 10 (8)	1 - 7 (5)	1 - 4 (3)	2 (1)	1 - 5 (4)	1 - 2 (2)
DMNREM-UNV-DMX-50 ¹	1 - 21 (16)	1 - 10 (8)	1 - 7 (5)	1 - 4 (3)	2 (1)	1 - 5 (4)	1 - 2 (2)
DMNREM-120-ELV-12	2 - 5	1 - 2	1	1	0	1	0
DMNREM-120-ELV-25	5 - 10	3 - 5	2 - 3	1 - 2	1	2	1
DMNREM-120-LTE-g	3 - 6	2 - 3	1 - 2	1	0	1	0
DMNREM-120-LTE-h	6 - 11	3 - 5	2 - 3	2	1	2	1
DMNREM-UNV-LUT-b	11 - 15	6 - 7	4 - 5	3	0	3	0
DMNREM-UNV-LUT-c	7 - 11	4 - 5	3	2	1	2	1
DMNREM-UNV-LUT-d	5 - 6	3	2	1	0	0	0
DMNREM-UNV-LUTP-20	4 - 7	2 - 3	2	1	0	1	0
DMNREM-UNV-CAS-50 ¹	1 - 21 (16)	1 - 10 (8)	1 - 7 (5)	1 - 4 (3)	2 (1)	1 - 5 (4)	1 - 2 (2)
DMNREM-UNV-NLT-50 ¹	1 - 21 (16)	1 - 10 (8)	1 - 7 (5)	1 - 4 (3)	2 (1)	1 - 5 (4)	1 - 2 (2)

Dimming range down to xx %	Dims to 0.1%
	Dims to 1%
	Dims to 5%
	Dims to 10%

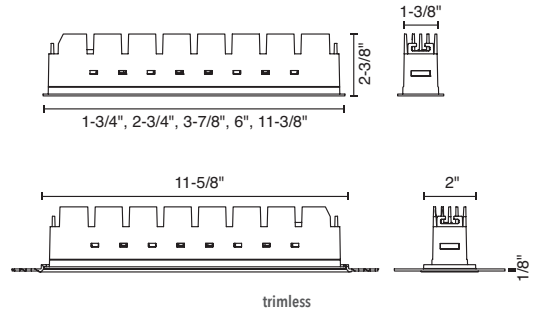
Notes

1. DMNREM-UNV-DIM10Z-50, DMNREM-UNV-DALIZ-50, DMNREM-UNV-DMX-50, DMNREM-UNV-CAS-50 and DMNREM-UNV-NLT-50 have multiple outputs. The number in parentheses "(x)" is the max number of fixtures per output.

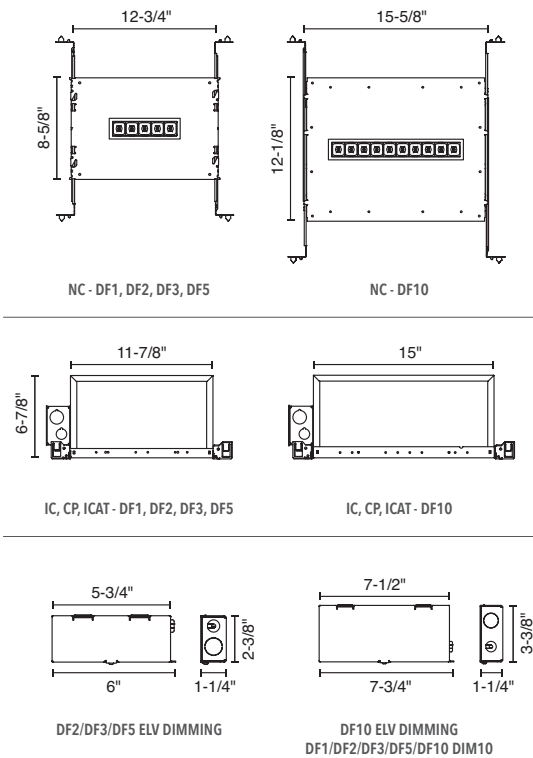
DIMENSION DOWNLIGHT



PRODUCT DIMENSIONS



MOUNTING OPTION DIMENSIONS



STATIC WHITE ORDERING CODE

Follow the steps to specify your fixture, example: DF3 - SW - 30K - 90 - 24D - UNV - DIM10 - NC - WH - WH - EM7

SERIES	TYPE	LED	CCT & LM MULTIPLIER	CRI	LENS & LM MULTIPLIER	VOLTAGE & DIMMING
DF	downlight	1 1 lens, 180 lm	27K 2700K(0.99)	90 90 CRI	24D 24° lens (1.00)	UNV-DIM10 ⁴ 120V-277V integrated driver, flicker free 0-10V dimming to 1%
DFT	downlight trimless	2 2 lens, 400 lm	30K 3000K(1.00)		40D 40° lens (0.91)	120-ELV ^{2,3,5} 120V integrated driver, leading & trailing edge dimming (Triac/ELV)
		3 3 lens, 610 lm	35K 3500K(1.01)			LVL low voltage luminaire, see below for remote driver ordering code
		5 5 lens, 960 lm				
		10 10 lens, 2000 lm				

MOUNTING OPTIONS

NC new construction with ceiling fitting plate
 IC insulation contact housing
 ICAT insulation contact / airtight housing
 CP chicago plenum housing
 RET retrofit, no ceiling fitting plate

TRIM COLOR

WH white
 MC matte chrome (0.97)
 BK black (0.90)

BEZEL COLOR & LM MULTIPLIER

WH white (1.00)
 MC matte chrome (0.97)
 BK black (0.90)

ELECTRICAL OPTIONS

EM7^{1,6} emergency battery backup, 90 minutes at 7 Watts to LED
 EM12^{1,6} emergency battery backup, 90 minutes at 12 Watts to LED
 For 347V option Order separate "347V to 277V" step down transformer P/N: P70489

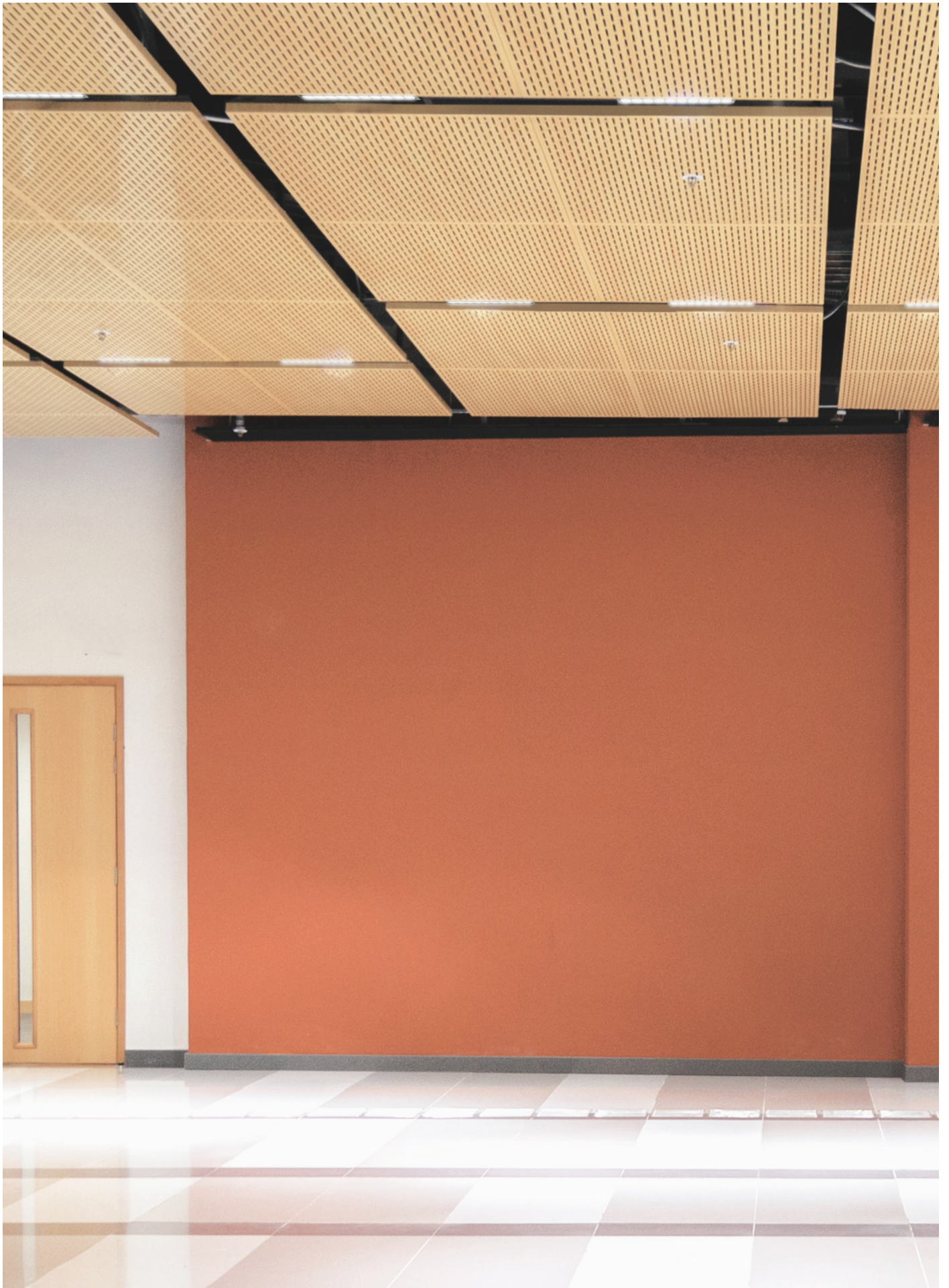
NOTE:

- EM options require above ceiling access for battery maintenance. EM7 compatible with DF5 & DF10 only. EM12 compatible with DF10 only.
- Leading and Trailing Edge dimming available in 120V only. Dimming performance depends on dimmer and wiring configuration.
- "120-ELV" option dims to 1% in DF10, 5% in 1xDF5, 10% in 1xDF3 & 1xDF2. EATON dimmer # DAL06P recommended.
- "UNV-DIM10" option requires above ceiling access for driver maintenance in models DF2 and DF3 only.
- "120-ELV" option not available for DF1.
- "EM7" & "EM12" not available with LVL option.

REMOTE DRIVER

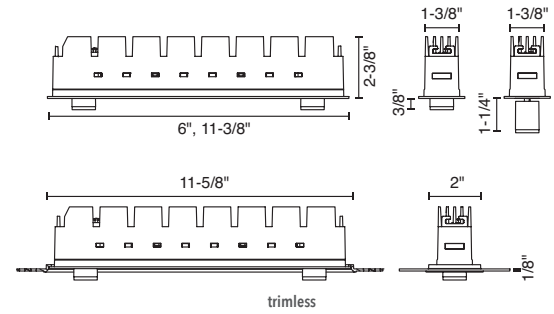
- For Remote Drive Ordering Code see page 6

SW (LED)	POWER (WITH DRIVER)		POWER (LVL)		
	DELIVERED LM	W (90CRI)	mA	Vf	W (90CRI)
180		3	700	3	2
400		7	700	7	5
610		9	700	9	7
960		13	700	15	11
1610		24	700	29	21

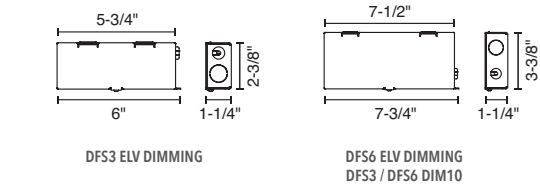
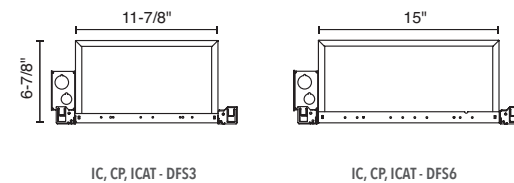
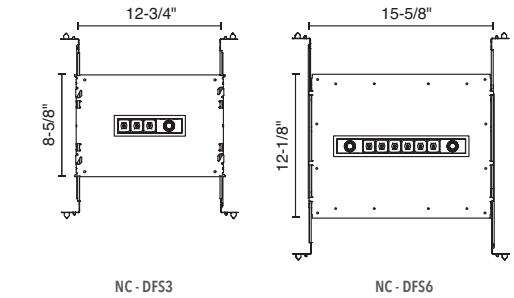


DIMENSION DOWNLIGHT WITH SPOT

PRODUCT DIMENSIONS



MOUNTING OPTION DIMENSIONS



LUTRON eldoLED your product | our drive ERP PoE CASAMBI

STATIC WHITE ORDERING CODE

Follow the steps to specify your fixture, example: DFS6 - SW - 30K - 90 - 24D - 15D - UNV - DIM10 - NC - WH - WH - EM7

SERIES	TYPE	LED	CCT & LM MULTIPLIER	CRI	LENS & LM MULTIPLIER	SPOT & LM MULTIPLIER
DFS	downlight with spot	3 3 lens 610 lm, 1 spot 140 lm	SW static white	27K 2700K (0.99)	90 90 CRI	24D 24° lens (1.00)
DFST	downlight with spot trimless	6 6 lens 1180 lm, 2 spot 140 lm per spot	30K 3000K (1.00)		40D 40° lens (0.91)	15D 15° lens (1.00)
			35K 3500K (1.01)		25D 25° lens (1.41)	

VOLTAGE & DIMMING

UNV-DIM10 120V-277V integrated driver, flicker free 0-10V dimming to 1%
 120-ELV^{2,3} 120V integrated driver, leading & trailing edge dimming (Triac/ELV)
 LVL low voltage luminaire, see below for remote driver ordering code

MOUNTING OPTIONS

NC new construction with ceiling fitting plate
 IC insulation contact housing
 ICAT insulation contact / airtight housing
 CP chicago plenum housing
 RET retrofit, no ceiling fitting plate

TRIM COLOR

WH white

BEZEL COLOR & LM MULTIPLIER

WH white (1.00)
 MC matte chrome (0.97)
 BK black (0.90)

ELECTRICAL OPTIONS

EM7^{1,4} emergency battery backup, 90 minutes at 7 Watts to LED
 EM12^{1,4} emergency battery backup, 90 minutes at 12 Watts to LED
 For 347V option Order separate "347V to 277V" step down transformer P/N: P70489

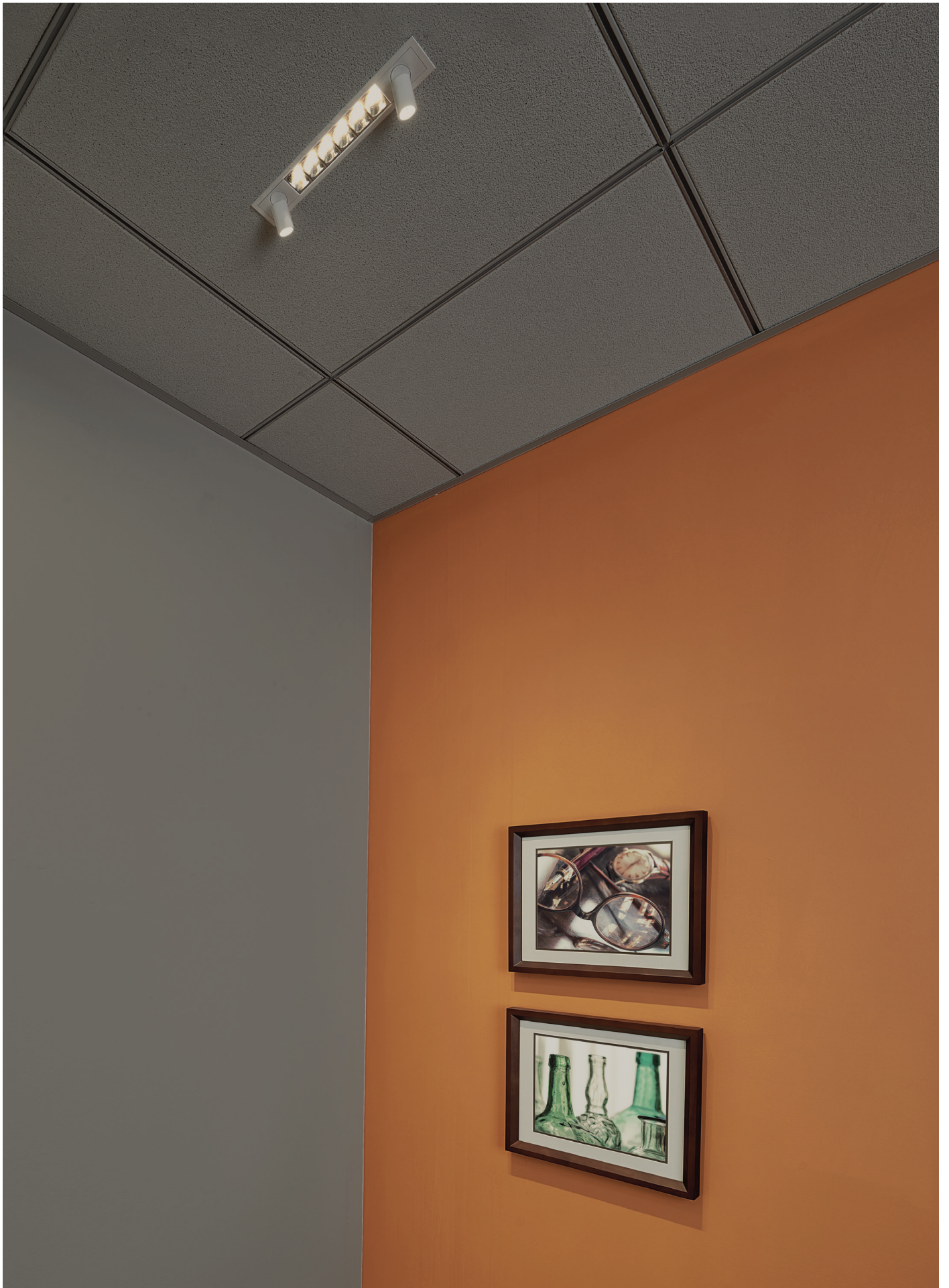
NOTE:

- EM options require above ceiling access for battery maintenance. EM12 compatible with DF6-DS2 only.
- Leading and Trailing Edge dimming available in 120V only. Dimming performance depends on dimmer and wiring configuration.
- "120-ELV" option dims to 1% in DF6-DS2, 5% in 1 x DF3-DS1. EATON dimmer # DAL06P recommended.
- "EM7" & "EM12" not available with LVL option.

SW (LED)	POWER (WITH DRIVER)		POWER (LVL)		
	DELIVERED LM	W (90CRI)	mA	Vf	W (90CRI)
600 / 140		11	700	12	9
1180 / 2X 140		20	700	24	17

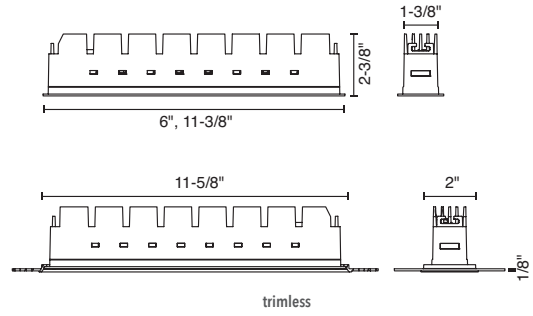
REMOTE DRIVER

- For Remote Drive Ordering Code see page 6

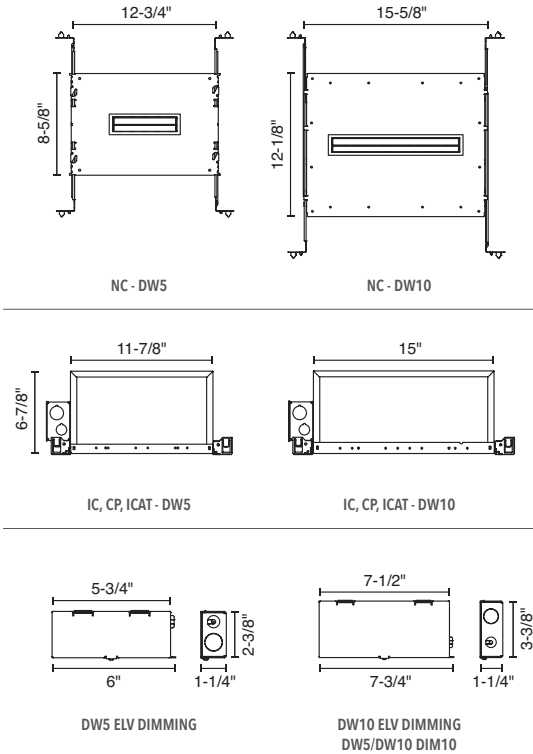


DIMENSION WALL WASH

PRODUCT DIMENSIONS



MOUNTING OPTION DIMENSIONS



STATIC WHITE ORDERING CODE

Follow the steps to specify your fixture, example: DW10 - SW - 30K - 90 - WW - UNV - DIM10 - NC - WH - EM7

SERIES	TYPE	CCT & LM MULTIPLIER	CRI	REFLECTOR	VOLTAGE & DIMMING
DW	wall wash	5 5 lens, 640 lm	27K 2700K (0.99)	90 90 CRI	UNV-DIM10 120V-277V integrated driver, flicker free 0-10V dimming to 1%
DWT	wall wash trimless	10 10 lens, 1050 lm	30K 3000K (1.00)		120-ELV ^{2,3} 120V integrated driver, leading & trailing edge dimming (Triac/ELV)
			35K 3500K (1.01)		LVL low voltage luminaire, see below for remote driver ordering code

MOUNTING OPTIONS

NC new construction with ceiling fitting plate
 IC insulation contact housing
 ICAT insulation contact /airtight housing
 CP chicago plenum housing
 RET retrofit, no ceiling fitting plate

TRIM COLOR

WH white

ELECTRICAL OPTIONS

EM7^{1,4} emergency battery backup, 90 minutes at 7 Watts to LED
 EM12^{1,4} emergency battery backup, 90 minutes at 12 Watts to LED
 For 347V option Order separate "347V to 277V" step down transformer P/N: P70489

NOTE:

- EM options require above ceiling access for battery maintenance. EM12 compatible with DW10 only.
- Leading and Trailing Edge dimming available in 120V only. Dimming performance depends on dimmer and wiring configuration.
- "120-ELV" option dims to 1% in DW10, 5% in 1 x DW5. EATON dimmer # DAL06P recommended.
- "EM7" & "EM12" not available with LVL option.

REMOTE DRIVER

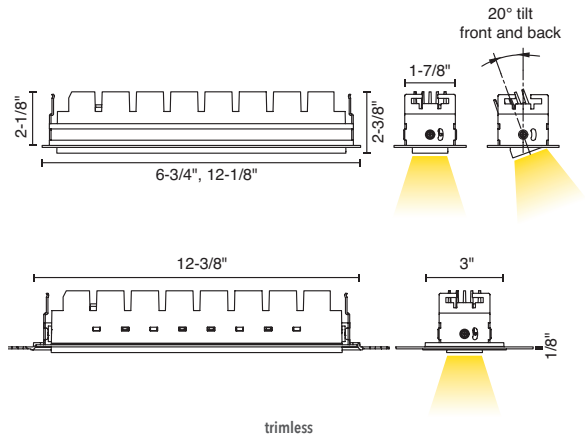
• For Remote Drive Ordering Code see page 6

SW (LED)	POWER (WITH DRIVER)		POWER (LVL)		
	DELIVERED LM	W (90CRI)	mA	Vf	W (90CRI)
460		13	700	15	11
1050		24	700	29	20

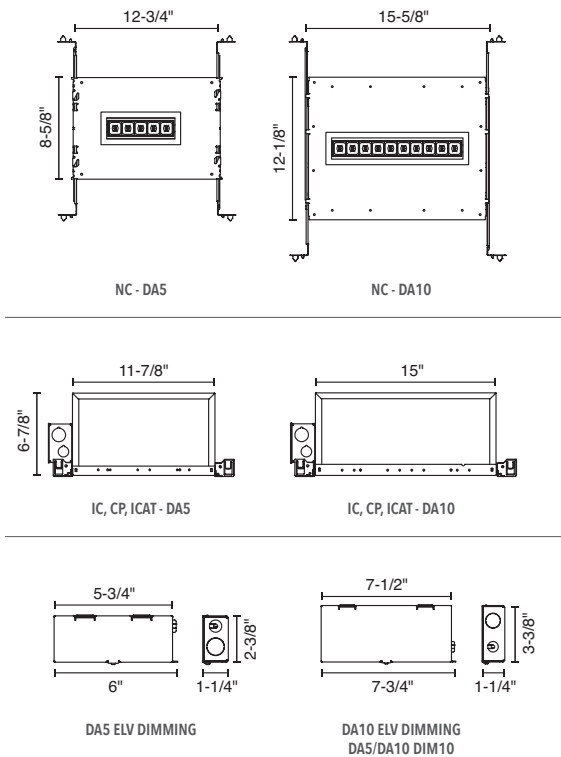


DIMENSION ADJUSTABLE

PRODUCT DIMENSIONS



MOUNTING OPTION DIMENSIONS



LUTRON eldoLED *your product | our drive* **ERP** **POWER** **PoE** **CASAMBI**

STATIC WHITE ORDERING CODE

Follow the steps to specify your fixture, example: DA5 - SW - 30K - 90 - 24D - UNV - DIM10 - NC - WH - WH - EM7

SERIES	TYPE	LED	CCT & LM MULTIPLIER	CRI	LENS & LM MULTIPLIER	VOLTAGE & DIMMING
DA	adjustable	5 5 lens, 960 lm	27K 2700K (0.99)	90 90 CRI	24D 24° lens (1.00)	UNV-DIM10 120V-277V integrated driver, flicker free 0-10V dimming to 1%
DAT	adjustable trimless	10 10 lens, 2000 lm	30K 3000K (1.00)		40D 40° lens (0.91)	120-ELV ^{2,3} 120V integrated driver, leading & trailing edge dimming (Triac/ELV)
			35K 3500K (1.01)			LVL low voltage luminaire, see below for remote driver ordering code

MOUNTING OPTIONS

NC new construction with ceiling fitting plate
 IC insulation contact housing
 ICAT insulation contact / airtight housing
 CP chicago plenum housing
 RET retrofit, no ceiling fitting plate

TRIM COLOR

WH white
 MC matte chrome (0.97)
 BK black (0.90)

BEZEL COLOR & LM MULTIPLIER

WH white (1.00)
 MC matte chrome (0.97)
 BK black (0.90)

ELECTRICAL OPTIONS

EM7^{1,4} emergency battery backup, 90 minutes at 7 Watts to LED
 EM12^{1,4} emergency battery backup, 90 minutes at 12 Watts to LED
 For 347V option Order separate "347V to 277V" step down transformer P/N: P70489

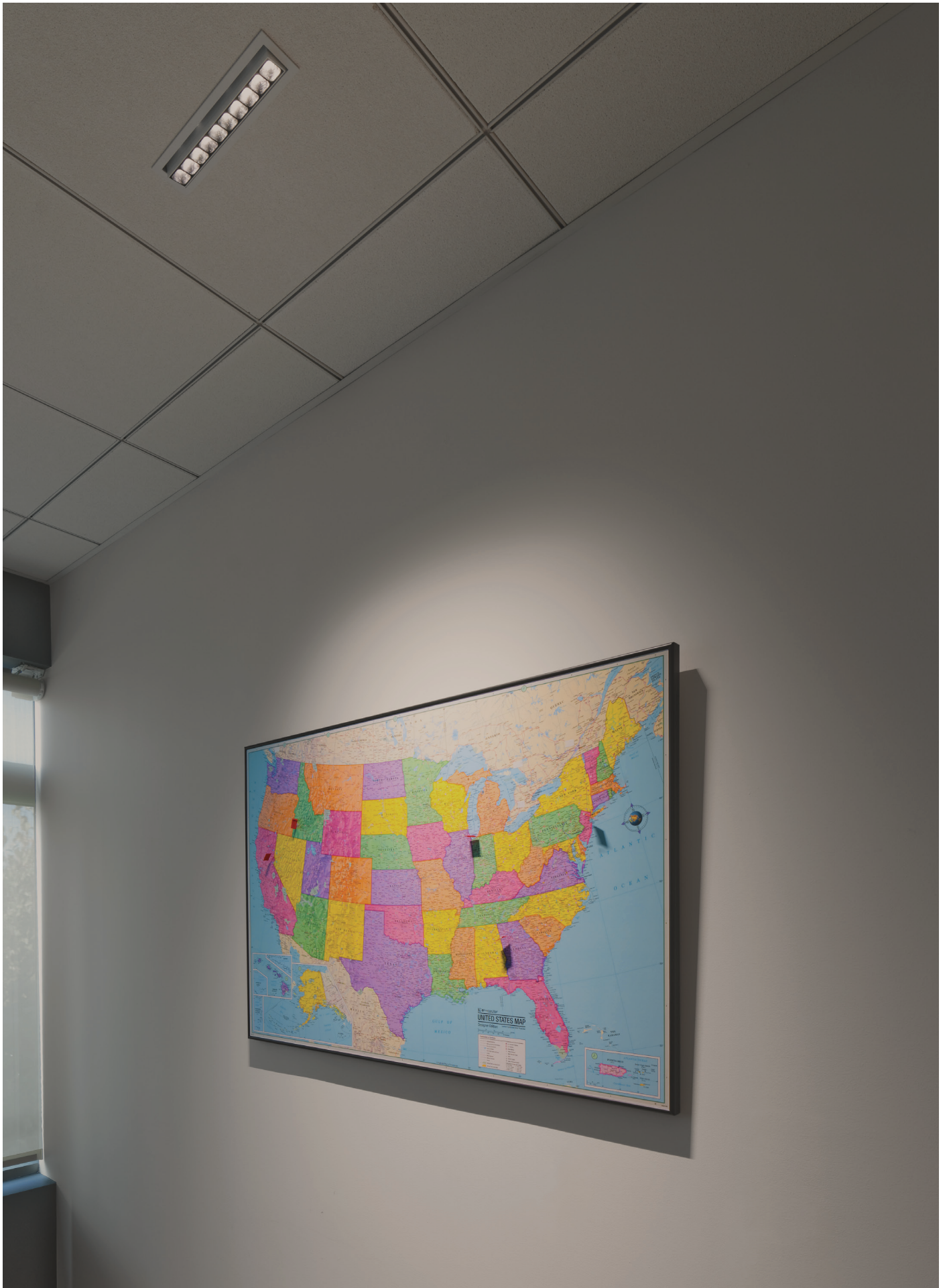
NOTE:

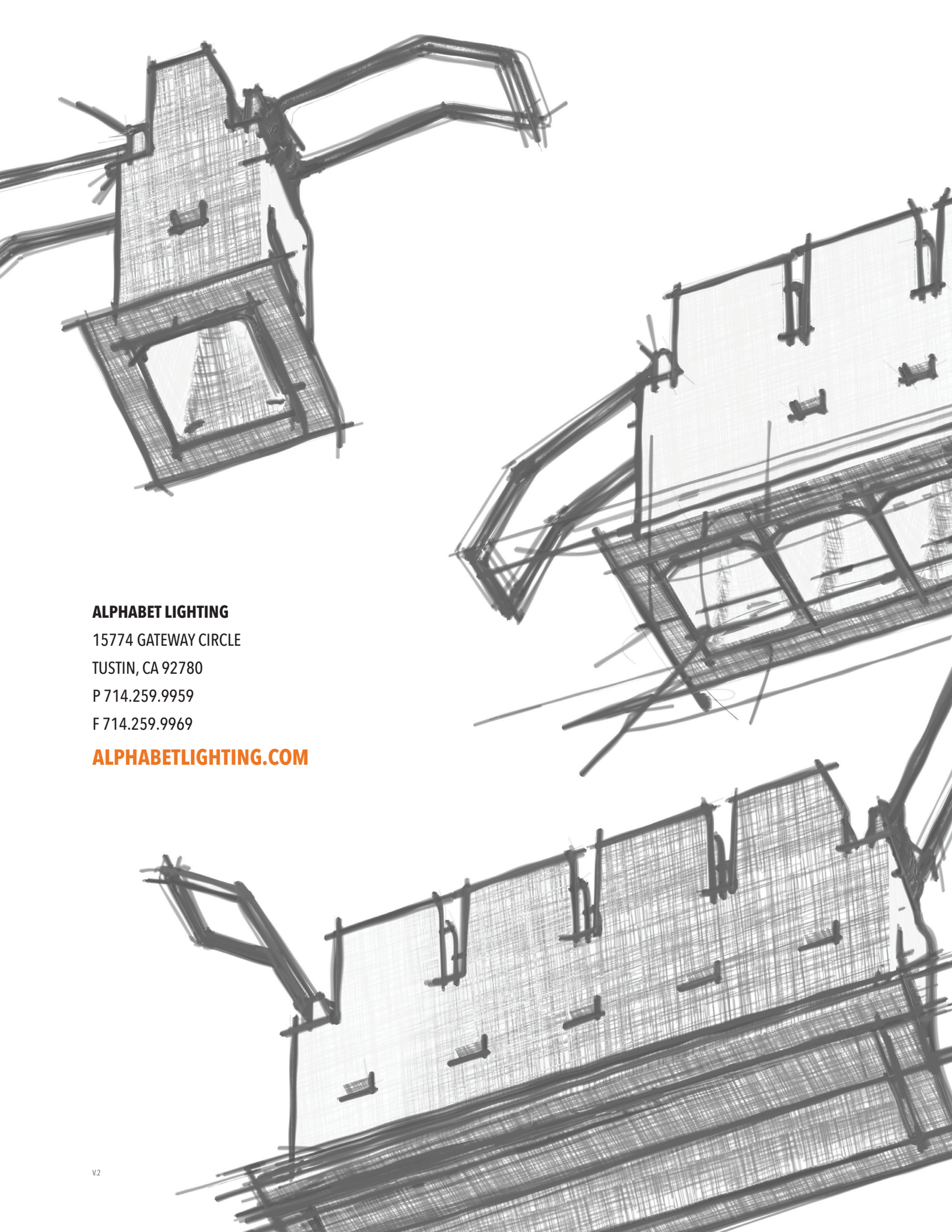
- EM options require above ceiling access for battery maintenance. EM12 compatible with DA10 only.
- Leading and Trailing Edge dimming available in 120V only. Dimming performance depends on dimmer and wiring configuration.
- "120-ELV" option dims to 1% in DA10, 5% in 1 x DA5. EATON dimmer # DAL06P recommended.
- "EM7" & "EM12" not available with LVL option.

REMOTE DRIVER

• For Remote Drive Ordering Code see page 6

SW (LED)	POWER (WITH DRIVER)		POWER (LVL)		
	DELIVERED LM	W (90CRI)	mA	Vf	W (90CRI)
960		13	700	15	11
2000		24	700	29	21





ALPHABET LIGHTING

15774 GATEWAY CIRCLE

TUSTIN, CA 92780

P 714.259.9959

F 714.259.9969

ALPHABETLIGHTING.COM