

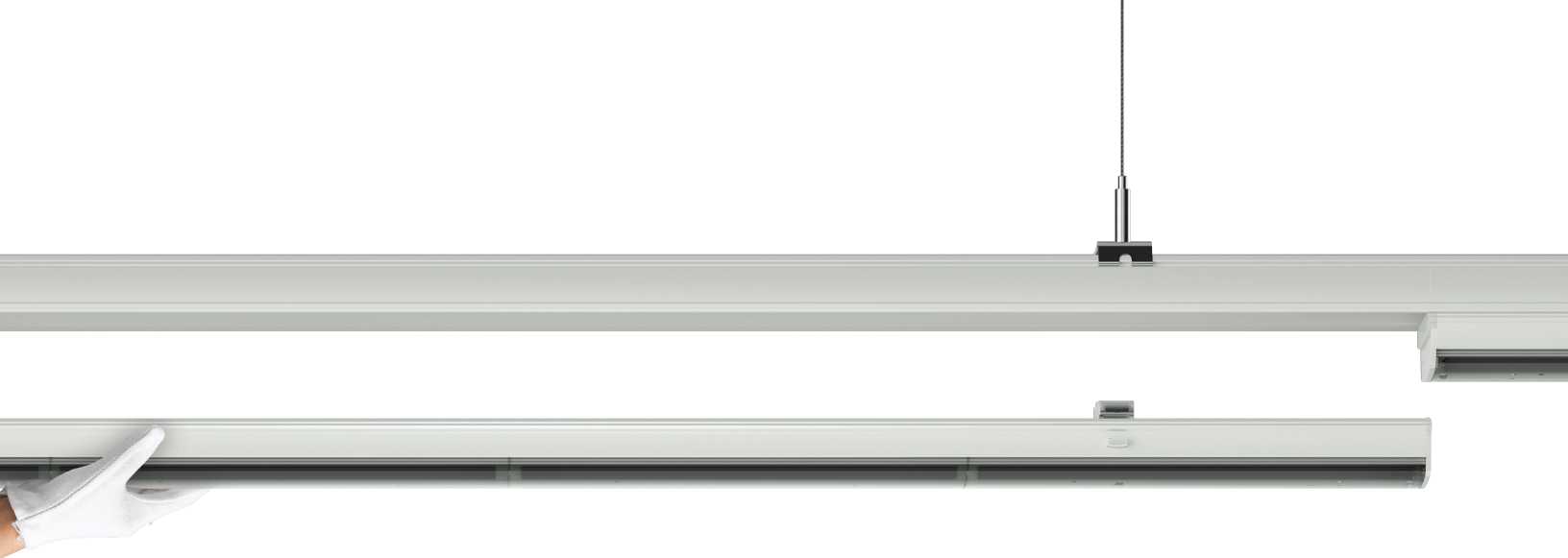


alphabet

ZETA SERIES

SHOPLINE

TRUNK SYSTEM



ZETA Series SHOPline Trunk System is a modular trunking system that allows for a variety of applications. Available with linear lens', specialty optics, and track inserts for Bruck performance spots, including our GX series spots & wall wash. SHOPline is Ideal for grocery store, retail, box store, institutional, classroom, industrial, & loft style open workspace.

FEATURES

- Powerful Linear Inserts
- 6 Beam Spread Options
- Track inserts for a variety of Bruck track heads and pendants

BENEFITS

- Energy Efficient - 160 Lumens Per Watt
- Maintenance free
- Tool-less, low cost installation





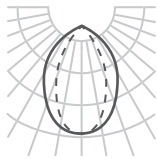
LINEAR INSERT OPTICS

- 160 Lumens Per Watt for very high efficiency
- 30°, 60°, 90°, 120°, asymmetric (L or R), or double-asymmetric optics
- Performance spots and pendants by BRUCK Lighting
- Universal Voltage 120V-277V
- L, T, & X connectors
- White or Black Finish

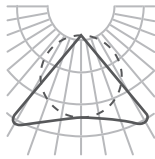
LENS



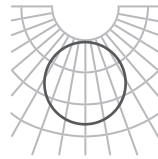
30°



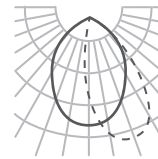
60°



90°



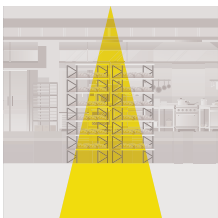
120°



Asymmetric (L or R)



Double Asymmetric



Commercial



Loft



Education



Industrial



Retail



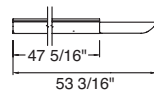
Grocery Store



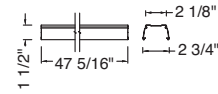
ZETA SHOPLINE TRUNK SYSTEM

Follow the steps to specify your fixture, example: ZETA - STS - TR - N - UNV - WH

Series	Type	Voltage	Finish
ZETA-STS	TR-N 47" trunk, normal, trunk only	UNV 120V-277V	BK black
	TR-E 47" trunk, ender, trunk only		WH white



TRUNK - NORMAL



TRUNK - ENDER

LIGHT INSERT

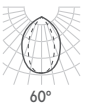
DELIVERED LUMENS / LPW	WATTAGE	WATTAGE
CCT	40W	60W
3000K	6130 lm / 153 lpw	9275 lm / 155 lpw
3500K	6195 lm / 155 lpw	9370 lm / 156 lpw

Follow the steps to specify your fixture, example: ZETA - STS - LI - SW - 100LM - 30K - 80 - 30D - UNV - 10V - WH

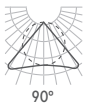
Series	Type	LED	Delivered Lumens	CCT	Lens	Voltage	Dimming	Finish
ZETA-STS	LI 47" light insert	SW static white	70LM 6300 lm 100LM 9500 lm	30K 3000K 35K 3500K	30D 30 degrees, sharp 60D 60 degrees, narrow 90D 90 degrees, wide 120D 120 degrees, flood ASL asymmetric left ASR asymmetric right DAS double asymmetric	UNV 120V-277V	10V 0-10V dimming to 5%	BK black WH white



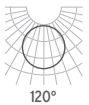
30°



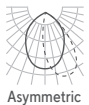
60°



90°



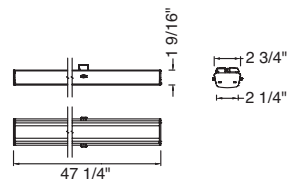
120°



Asymmetric
(L or R)



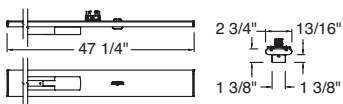
Double
Asymmetric



TRACK INSERT

Follow the steps to specify your fixture, example: ZETA - STS - TI - ECO - 120 - WH

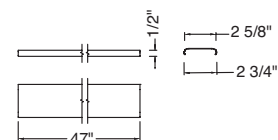
Series	Type	Voltage	Finish
ZETA-STS	TI-ECO 47" ECO track insert	120 120V	BK black WH white



BLANK INSERT

Follow the steps to specify your fixture, example: ZETA - STS - BI - WH

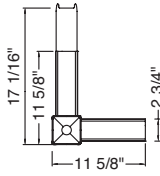
Series	Type	Finish
ZETA-STS	BI 47" blank insert	BK black WH white



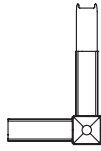
L FEED CONNECTOR

Follow the steps to specify your fixture, example: ZETA - STS - TR - L1 - WH

Series	Type	Finish
ZETA-STS	TR-L1 L connector - left side / feed out, right side / feed in	BK black
	TR-L2 L connector - right side / feed out, left side / feed in	WH white



TR-L1: L Connector - left side/ feed out, right side/feed in

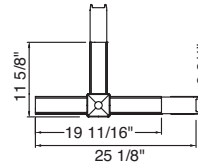


TR-L2: L Connector - right side/ feed out, left side/feed in

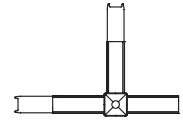
T FEED CONNECTOR

Follow the steps to specify your fixture, example: ZETA - STS - TR - T1 - WH

Series	Type	Finish
ZETA-STS	TR-T1 T connector - left side / feed in, two sides / feed out	BK black
	TR-T2 T connector - right side / feed in, two sides / feed out	WH white



TR-T1: T Connector - left side/ feed in, two sides/feed out

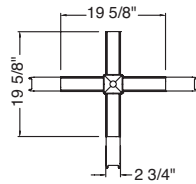


TR-T2: T Connector - right side/ feed in, two sides/feed out

X FEED CONNECTOR

Follow the steps to specify your fixture, example: ZETA - STS - TR - X1 - WH

Series	Type	Finish
ZETA-STS	TR-X1 X connector - one side / feed in, three sides / feed out	BK black WH white

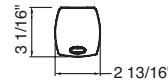


TR-X1: X Connector - one side/ feed in, three sides/feed out

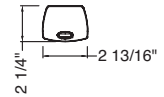
END CAP

Follow the steps to specify your fixture, example: ZETA - STS - EC - WH

Series	Type	Finish
ZETA-STS	EC end cap, light insert	BK black
	EC1 end cap, track insert	WH white



EC - light insert end cap

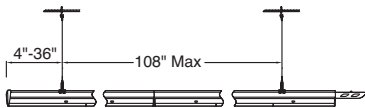


EC1 - track insert and blank cover end cap

MOUNTING AND POWER ACCESSORIES

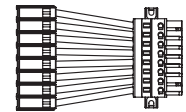
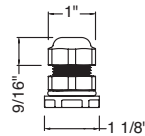
Part Number

- ZETA - STS - SC 118" suspension cord
- ZETA - STS - CG cable glide M20
- ZETA - STS - FC feed in connector

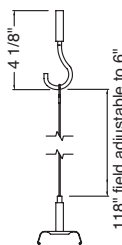


NOTE: Max distance between two suspension points is 108". Factory will consult if additional suspension points are needed. ex. 5 trunks = 235" (20') will need a min. of 3 support points, but an additional support will be added to maintain linearity.

Cable Glide



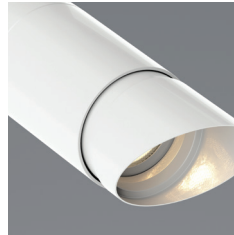
Feed in Connector



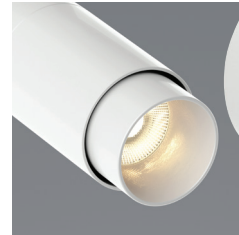
Suspension Cord



GX15



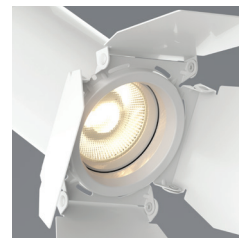
SHROUD SNOOT



SNOOT



HONEYCOMB LOUVER



BARN DOORS

GX

SERIES

GX is a family of quality spots and cylinders with a range of options and glare reduction accessories. GX Series offers all the bells and whistles at a budget price, including flicker-free dimming and quality 90CRI light. It has a clean matte finish on a sleek, solid cylinder that conceals precision TIR optics.

Features

- ECONOMICAL Spec Grade
- Track: ECO, HALO®, JUNO®, Lightolier® and SMARTrack
- Surface Mount Cylinder
- Field Cuttable Mono-point Spot
- Snoot, Shroud, Honeycomb Louver, Barn Doors
- Black or White Finish Option

LED Performance

- Lumens: GX15 at 1150 lm, GX25 at 1800 lm and GX35 at 3450 lm
- CCT: 3000K and 3500K
- CRI: > 90
- SDCM: 3 McAdam Ellipse
- Beam Options: 20°, 38° and 60°*

NOTE:

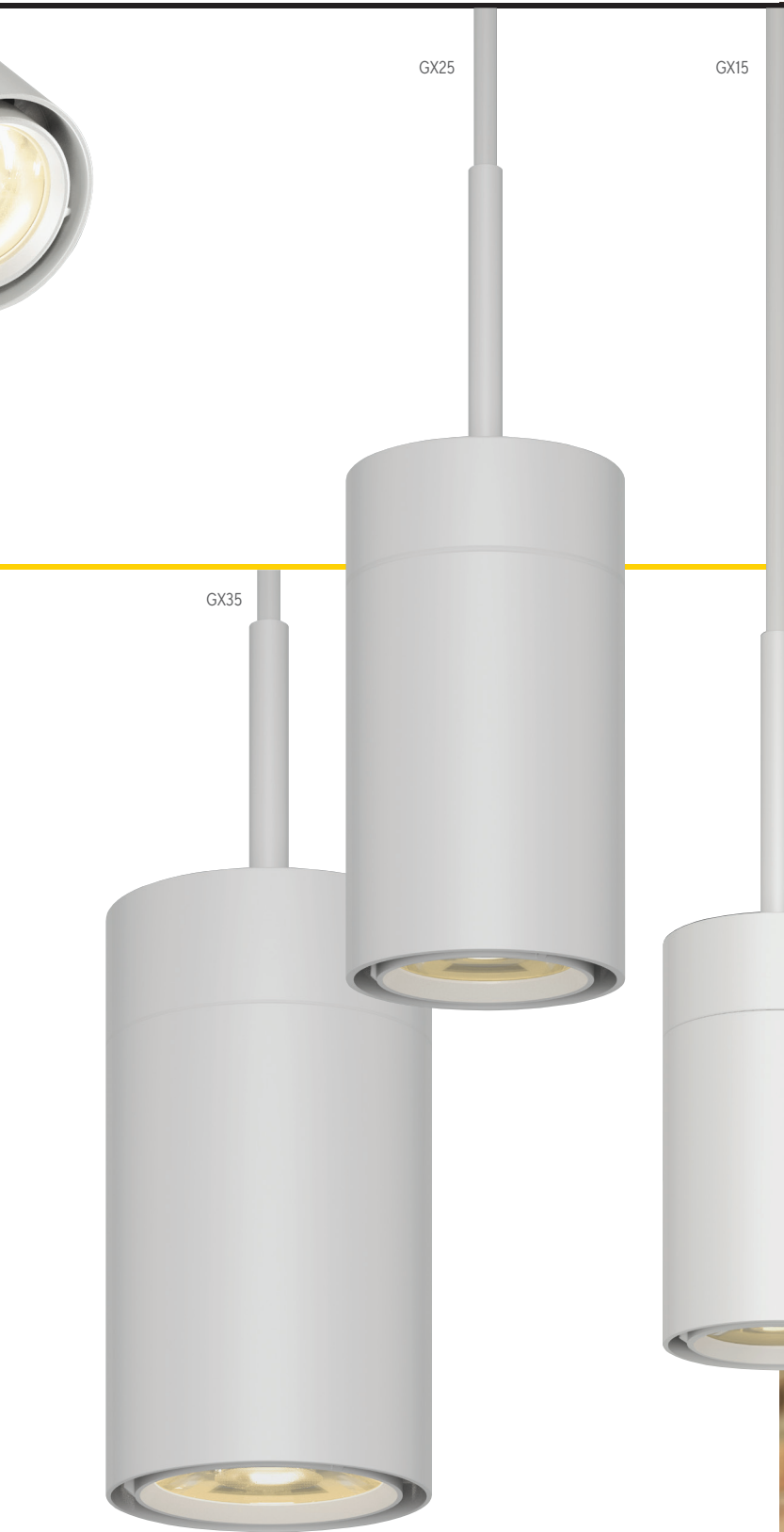
*50° also offered in GX35



GX25

GX35

BRUCK



GX25

GX15

GX35



GX

WALL WASH

HIGH POWER PERFORMANCE

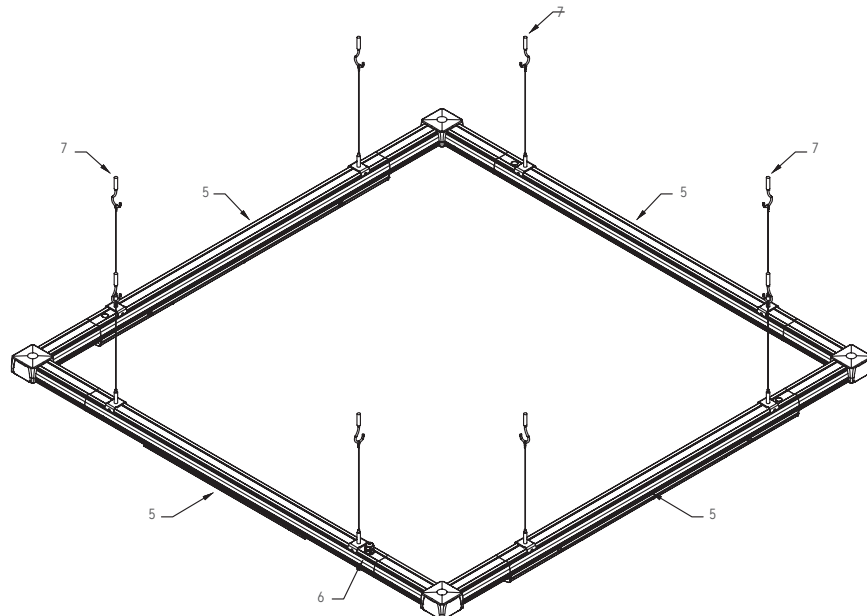
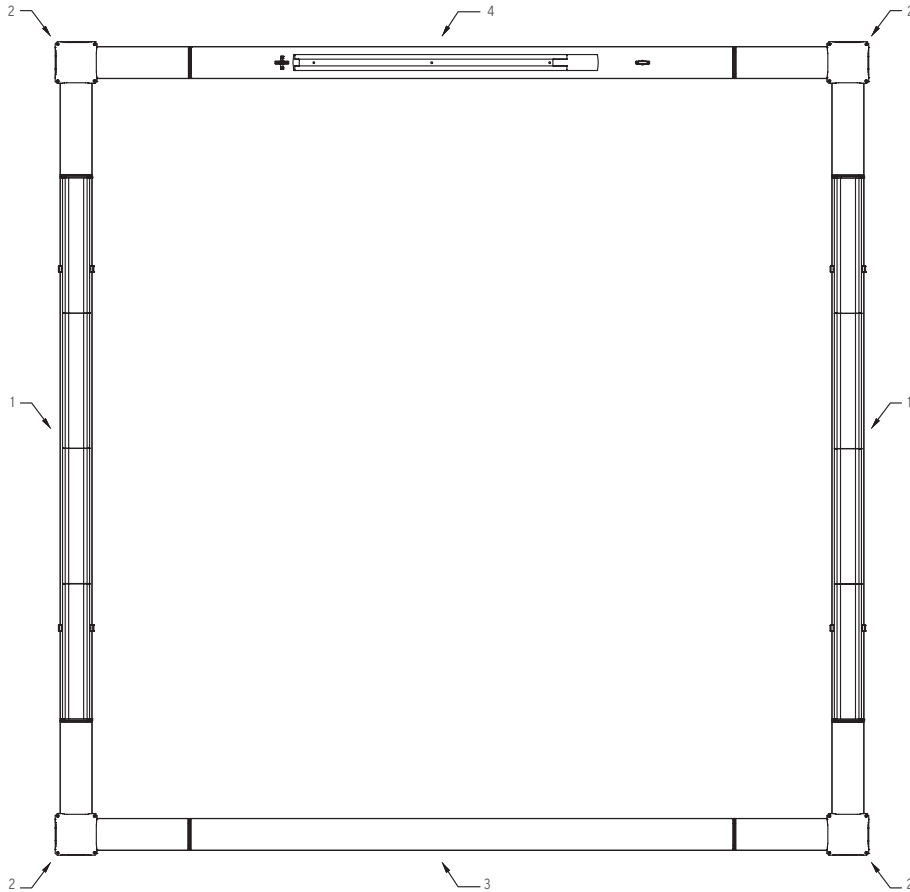
The GX Wall Wash is a high power, performance fixture for ECO single circuit track.

- Switchable CCT: 3000K, 3500K and 4000K
- Switchable outputs: 30W, 40W and 50W
- Up to 4800 lm
- 90° x 50° beam distribution
- Black or white finish with matte black or specular reflector
- 360° rotation and 90° tilt for very flexible positioning

DESIGN GUIDE

Product Key

- | | |
|--|---|
| 1 ZETA - STS - LI - SW - 100LM - 30K - 80 - 60D - UNV - 10V - BK | 47" Light insert, 60W - 9600 lm |
| 2 ZETA - STS - TR - L1 - BK | L Connector, left side / feed out, right side / feed in |
| 3 ZETA - STS - BI - BK | 47" Blank insert |
| 4 ZETA - STS - TI - ECO - BK | 47" ECO track insert |
| 5 ZETA - STS - TR - N - BK | 47" Trunk Insert, ECO track |
| 6 ZETA - STS - CG | Cable glide M20 |
| 7 ZETA - PLS - SC | Suspension cord, 118" |







DESIGN GUIDE

REFLECTED CEILING PLAN

Product Key

- 1 ZETA - SLS - TR - N 47" trunk, normal
- 2 ZETA - SLS - TR - E 47" trunk, ender
- 3 ZETA - SLS - TR - L1 L feed connector, left side / feed out, right side / feed in
- 4 ZETA - SLS - TR - L2 L feed connector, right side / feed out, left side / feed in
- 5 ZETA - SLS - TR - T1 T feed connector, left side / feed in, two sides / feed out
- 6 ZETA - SLS - TR - T2 T feed connector, right side / feed in, two sides / feed out
- 7 ZETA - SLS - TR - X1 X feed connector, one side / feed in, three sides / feed out
- 8 ZETA - SLS - EC/EC1 Light insert or track / blank insert end cap

Insert Options

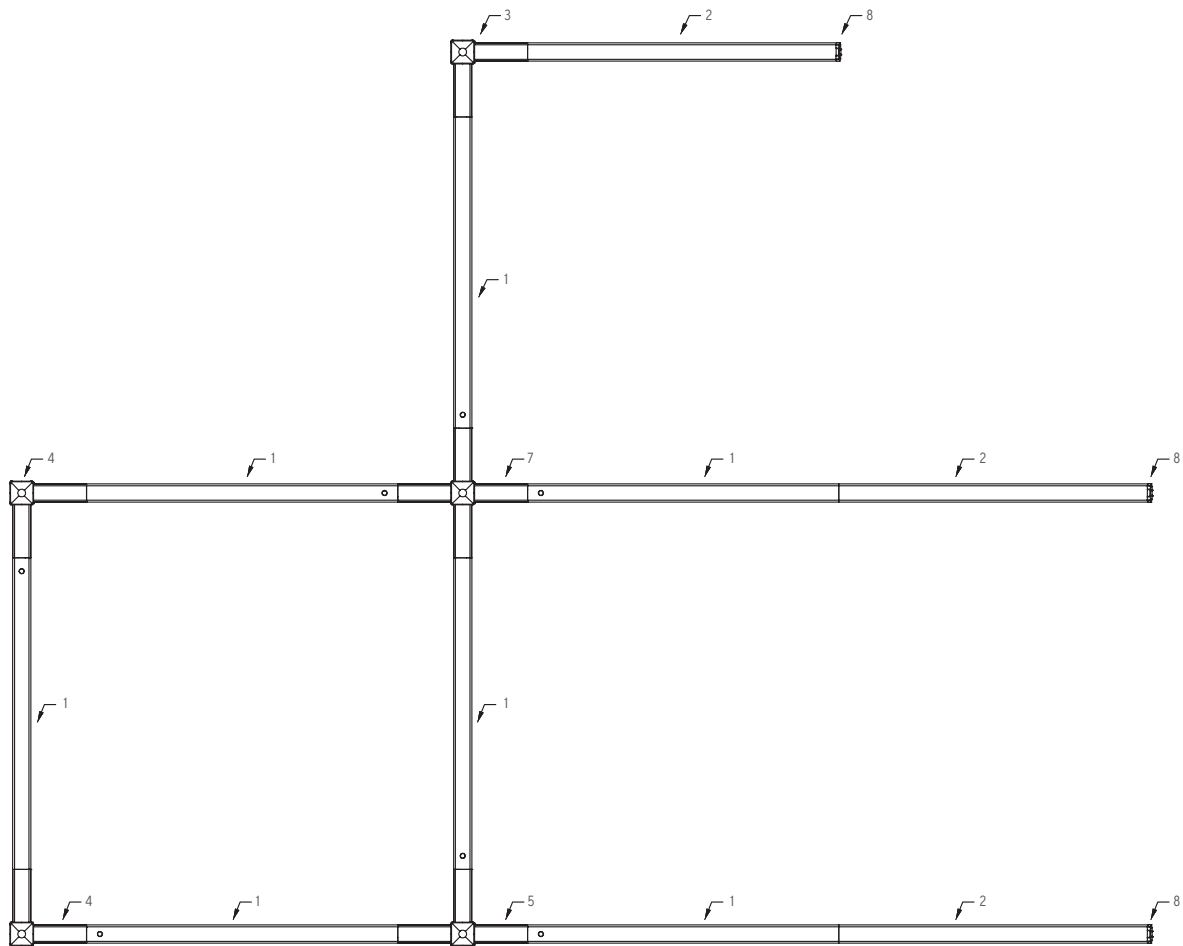
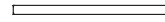
ZETA - SLS - LI 47" Light insert



ZETA - SLS - T1 47" ECO track insert



ZETA - SLS - BI Blank insert





88 Maxwell

Irvine, CA 92618

714.259.9959

AlphabetLighting.com

LEDRAbrands