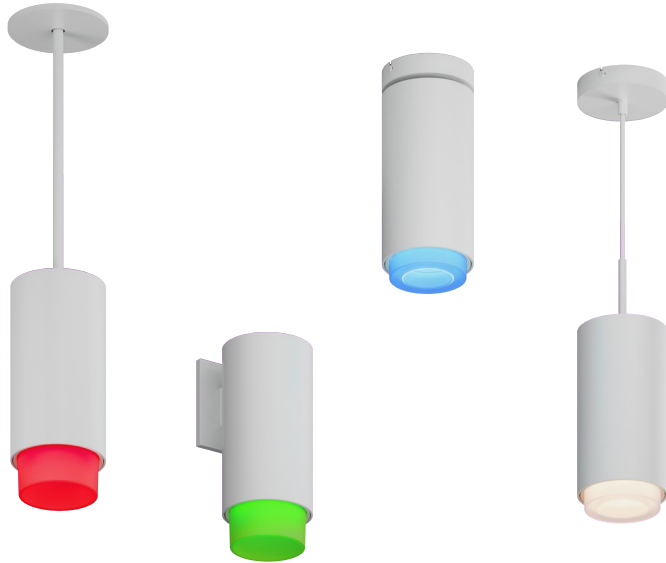


PROJECT INFORMATION		
JOB NAME		TYPE
ORDERING CODE		

BETA 4

4" Cylinder LiteOptics RGBW



20° - 40° BEAM (Note: Specifications are subject to change without notice)		
22mm COLOR TUNING MODULE PERFORMANCE DATA		
LED LIGHT ENGINE	NOMINAL DELIVERED LUMENS	SYSTEM WATTAGE
10LM	800LM @30K/90CRI	25W
Notes	Delivered lumens based on CQR-S20, (see page 2)	

CASAMBI

FEATURES

- RGB (W) five white CCT options available
- Seamless extrusion with powder coated finish for clean aesthetics
- Thermally optimized for longevity
- 20° - 40° beam spread
- Micro slim canopy option at 1/4"-3/8" depth plus 1/2" diameter stem.
- Multiple mounting, glare control options, trims and finishes available

LED

- Lumiled LUXEON C Color Line · SDCM = 2-step MacAdam Ellipse, Duv +/- 0.002, Lumen Maintenance: L₇₀ > 50,000 hrs

DIMMING AND CONTROLS

- DMX control, dimmable to 1% + RDM
- BLE mesh network control, profile allows color mixing on Casambi app

LISTING

- ULus Listed to UL1598 & UL2108; cUL Listed to CSA C22.2 #250.0
- Suitable for dry and damp locations
- Made in the USA - meets the requirements of the Buy American provision within the ARRA
- 5 Year Limited warranty

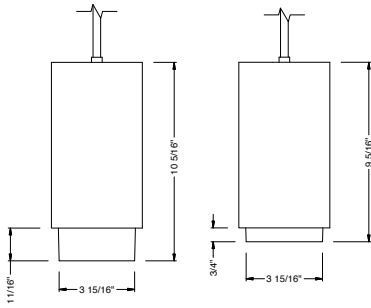
CONSTRUCTION

- Extruded aluminum housing
- Lexan™ (PC) Optimal connectivity for wireless control signal
- Machined aluminum canopy
- SVT pendant cord
- Machined aluminum canopy

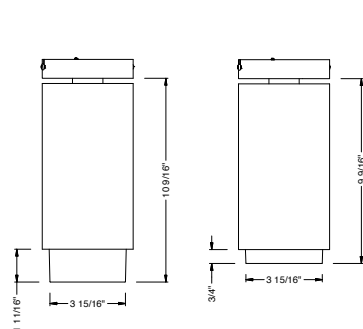
ELECTRICAL

- 120V-277V
- Power factory ≥ 0.9
- Max ambient temperature 50C
- Battery Backup not offered. Emergency Generator/Inverter/Controls-Override Device supplied by others

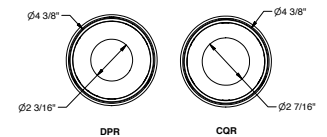
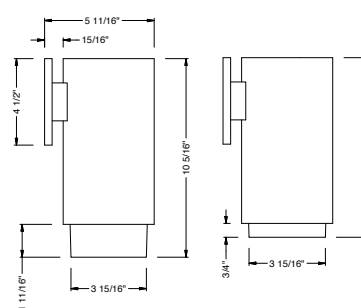
PENDANT



SURFACE MOUNT



WALL MOUNT



PROJECT INFORMATION		
JOB NAME		TYPE
ORDERING CODE		

ORDERING CODE		
SERIES	BETA	BETA
TYPE	4R	4" round
LED	RGBW	4 channel color module
DELIVERED LUMENS	10LM	800 lm
	Standard Configuration: 3000K 90CRI CQR-S20 Calculated Delivered Lumens = [Delivered Lumen Value] x [CCT Multiplier] x [Reflector Multiplier]	
CCT	27K	RGBW with white at 2700K
	30K	RGBW with white at 3000K
	35K	RGBW with white at 3500K
	65K	RGBW with white at 6500K
	43K	RGBW with white at 4300K
CRI	90	90 CRI
OPTIC & LM MULTIPLIER	CQR-S20	20° CIRQUE RING with clear lens (1.00)
	CQR-HE40	40° CIRQUE RING with diffused lens (0.98)
	DPR-S20	20° DROP RING with clear lens (0.98)
	DPR-HE40	40° DROP RING with diffused lens (0.94)
FINISH	BK	black
	WH	white
	MC	matte chrome

ORDERING CODE		
MOUNTING OPTIONS SEE PAGE 4	W	wall mount
	S	surface mount
	JCOV-S	conduit junction box cover with knockouts, surface
	P¹	pendant, 108" flexible cord
	RP	rigid pendant 4' stem with swivel stem/canopy
	RP5	rigid pendant 5' stem with swivel stem/canopy
	RP6	rigid pendant 6' stem with swivel stem/canopy
	RP8	rigid pendant 8' stem with swivel stem/canopy
	RP10	rigid pendant 10' stem with swivel stem/canopy
	RPF2	rigid pendant 2' with fixed stem/canopy
	RPF3	rigid pendant 3' with fixed stem/canopy
	RPF4	rigid pendant 4' with fixed stem/canopy
	RPF6	rigid pendant 6' with fixed stem/canopy
	JCOV-XX²	conduit junction box cover with knockouts, complete XX code with desired pendant mount
VOLTAGE	UNV	120V-277V
DIMMING	DMX	DMX control, dimmable to 1% + RDM
	CAS	Casambi Bluetooth control with flicker free 1% dimming

YOUR COMPLETED ORDERING CODE	
Follow the steps to specify your fixture, example:	
BETA - 4R - RGBW - 10LM - 35K - 90 - CQR - S20 - WH - P - UNV - DMX	

NOTES

1. Pendant mounting available with casambi control.
2. JCOV not available with RP mounting.

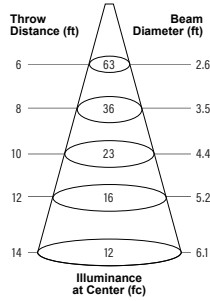
*Slim canopy with rigid stem connection shall be used in jurisdictions that DO NOT require light fixtures to freely swing in lateral directions, complying with local and national building codes.

*RP mounting with swivel is recommended to be installed on a 4in square or 4in deep regress 2-1/8" octagonal junction box.

PROJECT INFORMATION		
JOB NAME		TYPE
ORDERING CODE		

PHOTOMETRIC DATA

CQR-S20
25° CIRQUE RING WITH CLEAR LENS



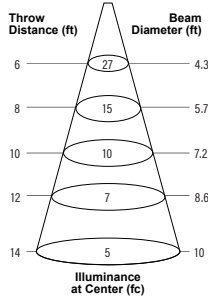
WATTS: 26 LPW: 30.9

LUMENS: 803 CCT: 3000K

INTENSITY

DEGREE	CANDELA
0	2274
5	1997
15	897
25	193
35	79
45	68

CQR-HE40
40° CIRQUE RING WITH DIFFUSED LENS



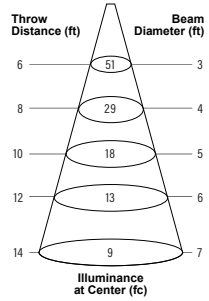
WATTS: 26 LPW: 30.2

LUMENS: 784 CCT: 3000K

INTENSITY

DEGREE	CANDELA
0	974
5	926
15	645
25	331
35	148
45	89

DPR-S20
28° DROP RING WITH CLEAR LENS



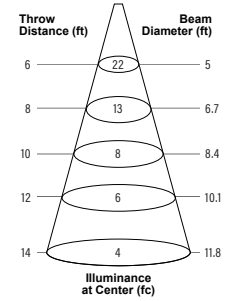
WATTS: 26 LPW: 30.4

LUMENS: 790 CCT: 3000K

INTENSITY

DEGREE	CANDELA
0	1838
5	1654
15	858
25	217
35	60
45	56

DPR-HE40
46° DROP RING WITH DIFFUSED LENS



WATTS: 26 LPW: 29.1

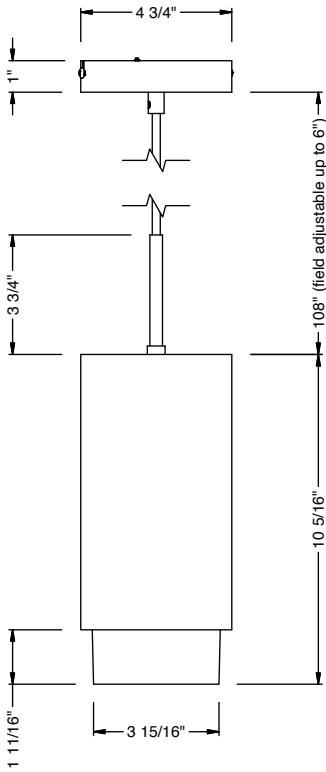
LUMENS: 758 CCT: 3000K

INTENSITY

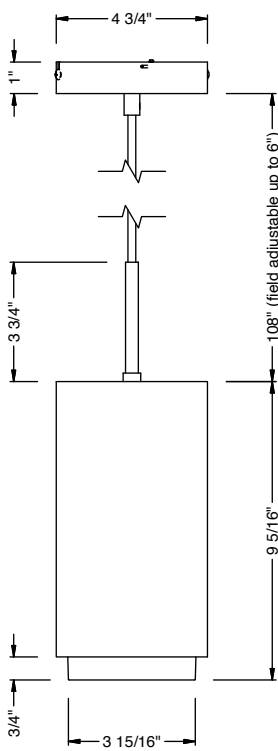
DEGREE	CANDELA
0	807
5	781
15	605
25	334
35	121
45	73

PROJECT INFORMATION		
JOB NAME		TYPE
ORDERING CODE		

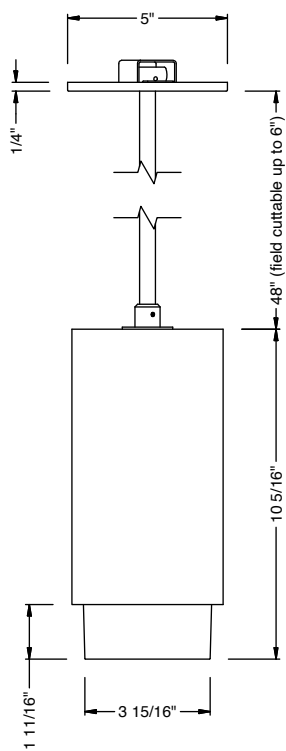
MOUNTING OPTIONS



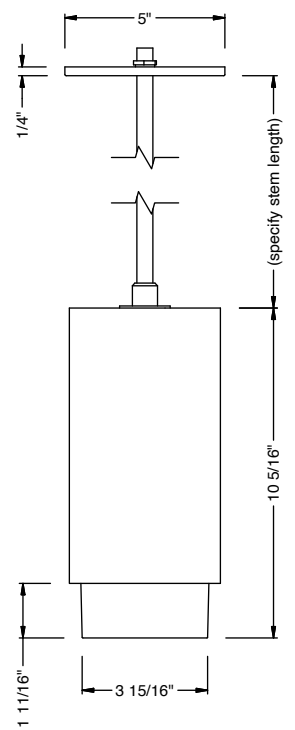
**PENDANT - DPR
CAS**



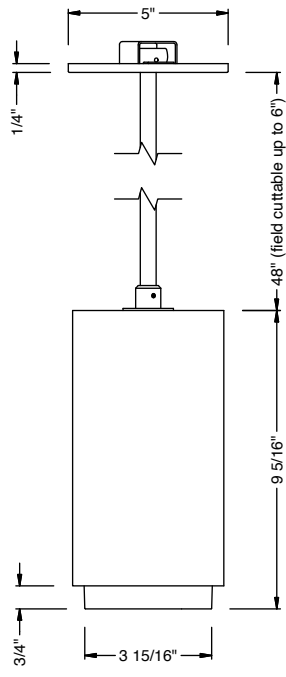
**PENDANT - CQR
CAS**



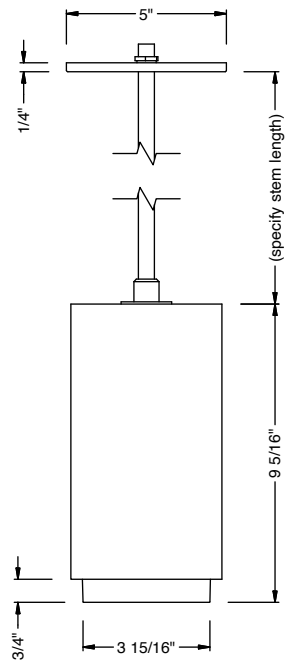
**RP - DPR
DIMX / CAS**



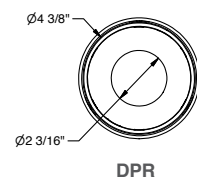
**RPF - DPR
DIMX / CAS**



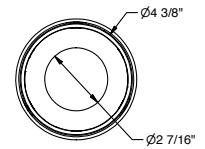
**RP - CQR
DIMX / CAS**



**RPF - CQR
DIMX / CAS**



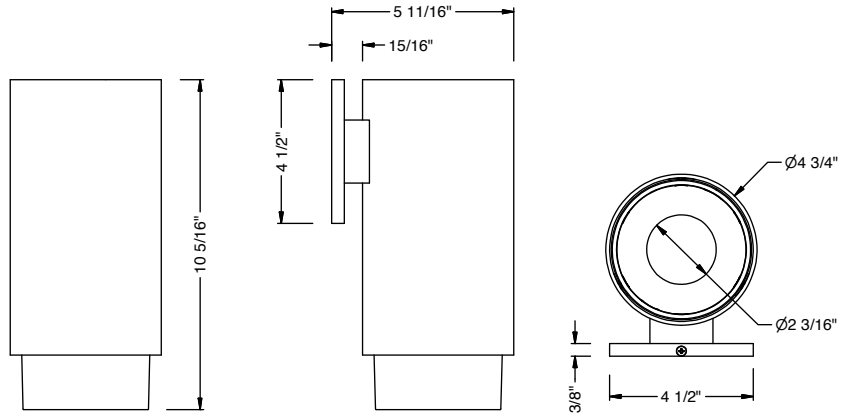
DPR



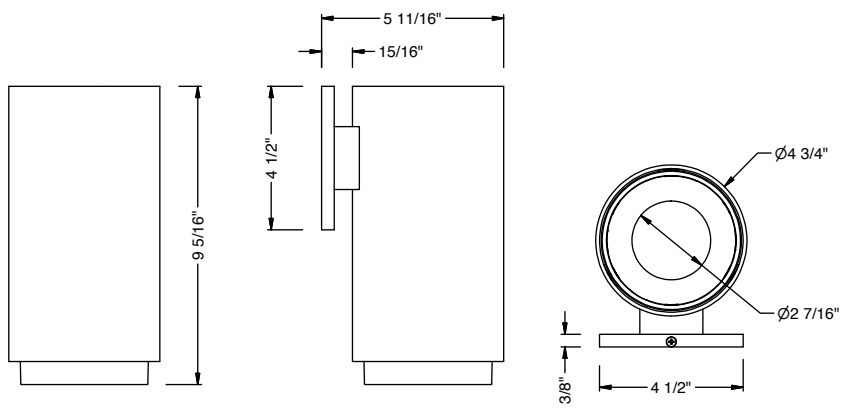
CQR

PROJECT INFORMATION		
JOB NAME		TYPE
ORDERING CODE		

MOUNTING OPTIONS



**WALL MOUNT - DPR
DIMX / CAS**



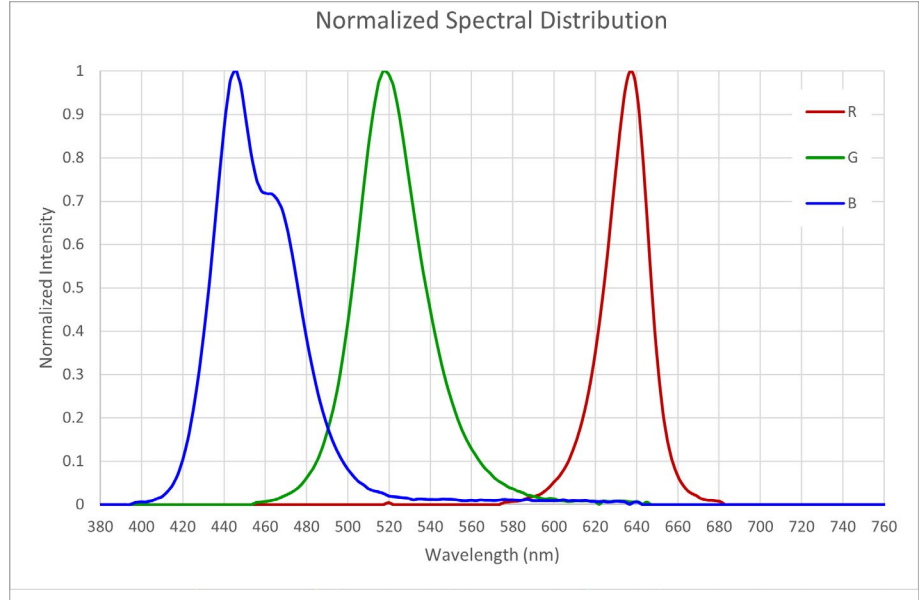
**WALL MOUNT - CQR
DIMX / CAS**

PROJECT INFORMATION		
JOB NAME		TYPE
ORDERING CODE		

RGBW DATA

DOMINANT WAVELENGTH	
	MEASURED
R	623.9
G	524.2
B	461.9

RGB SPECTRAL PLOT



COLOR GAMUT PLOT

