

Light efficiency:

36 Lumen/Watt

Light quality:

CRI: 83.4

Color temperature:

2887 K

Output: 1080 lm

Peak: 1531 cd

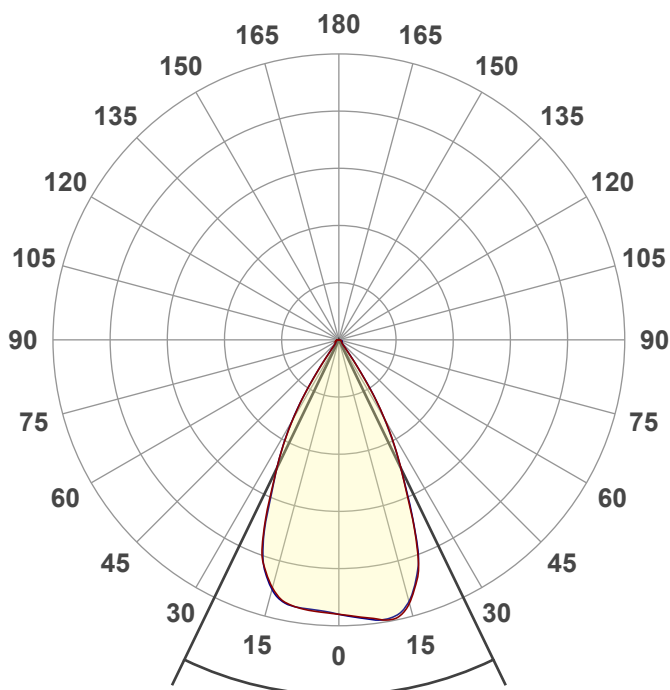
Power: 30.0 W

PF: 0.98



NU3-RDDR-XTM09-16LM-30K-83-50D-SBL-WH

Date and time:  
4/11/2022 3:40:08 PM



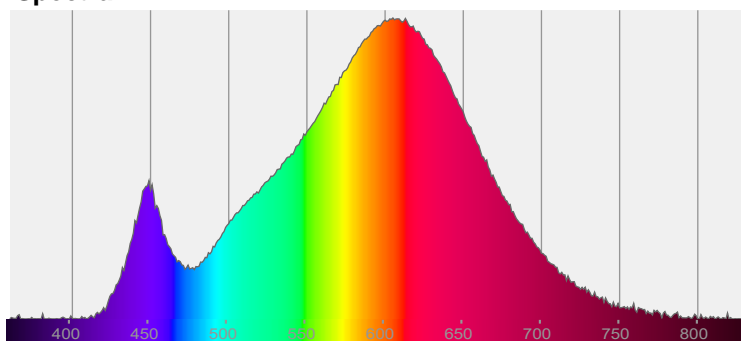
Beam angle

51.6°



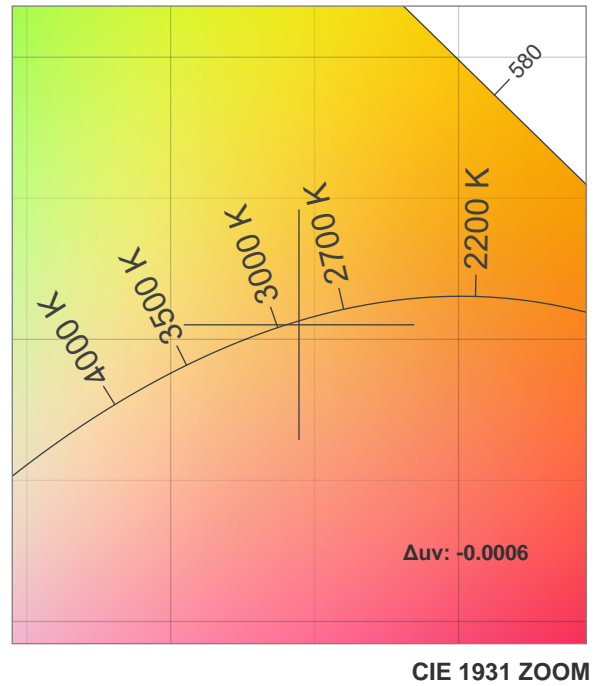
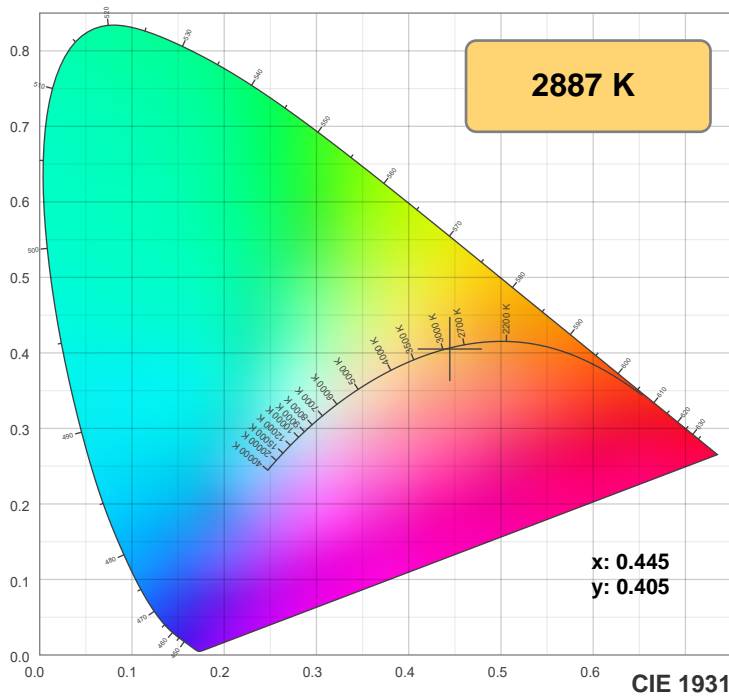
CIE 1931  
x: 0.445  
y: 0.405

Spectra

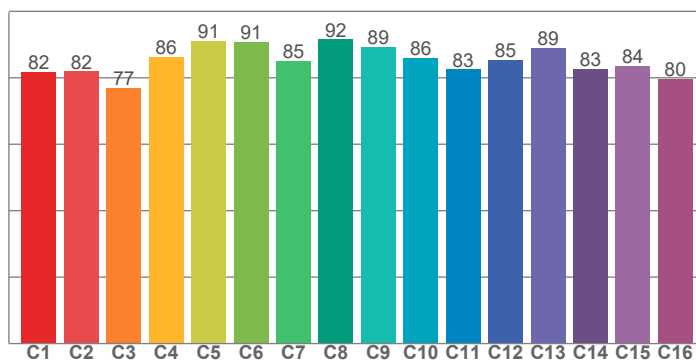


Power

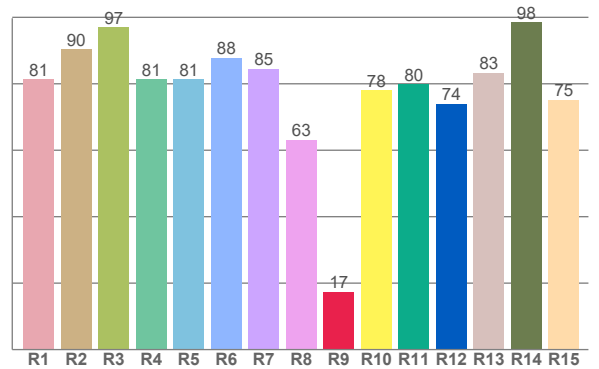
Voltage: 121 V  
Current: 0.247 A  
Frequency: 0 Hz



TM30: 85.1



CRI: 83.4 (R1-R8)



CRI R values, only R1-R8 are used to calculate final CRI value

R1	R2	R3	R4	R5	R6	R7	R8	R9	R10	R11	R12	R13	R14	R15
81.4	90.4	97.0	81.4	81.3	87.8	84.6	63.2	17.4	78.0	80.0	74.0	83.3	98.5	75.2

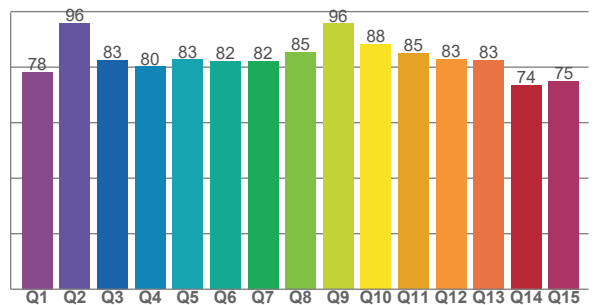
TM30 C values, 16 binned values out of total of 99 C values

C1	C2	C3	C4	C5	C6	C7	C8	C9	C10	C11	C12	C13	C14	C15	C16
81.8	81.9	77.0	86.4	91.0	90.9	85.0	91.6	89.2	85.9	82.6	85.5	88.9	82.7	83.5	79.7

CQS Q values

Q1	Q2	Q3	Q4	Q5	Q6	Q7	Q8	Q9	Q10	Q11	Q12	Q13	Q14	Q15
78.3	95.8	82.6	80.3	82.7	82.3	82.2	85.5	95.7	88.4	85.0	82.9	82.5	73.6	75.0

CQS: 82.3



## Color parameters

Color temperature	Color rendering index	Red component	Color fidelity	Color gamut	Color quality scale	Color coordinate cie 1931	Color coordinate cie 1931	Color coordinate	Color coordinate	Color deviation from black body
CCT	CRI	CRI R9	TM30 Rf	TM30 Rg	CQS	x	y	u	v	$\Delta uv$
2887 K	83.4	17.4	85.1	97.7	82.3	0.445	0.405	0.255	0.349	-0.0006

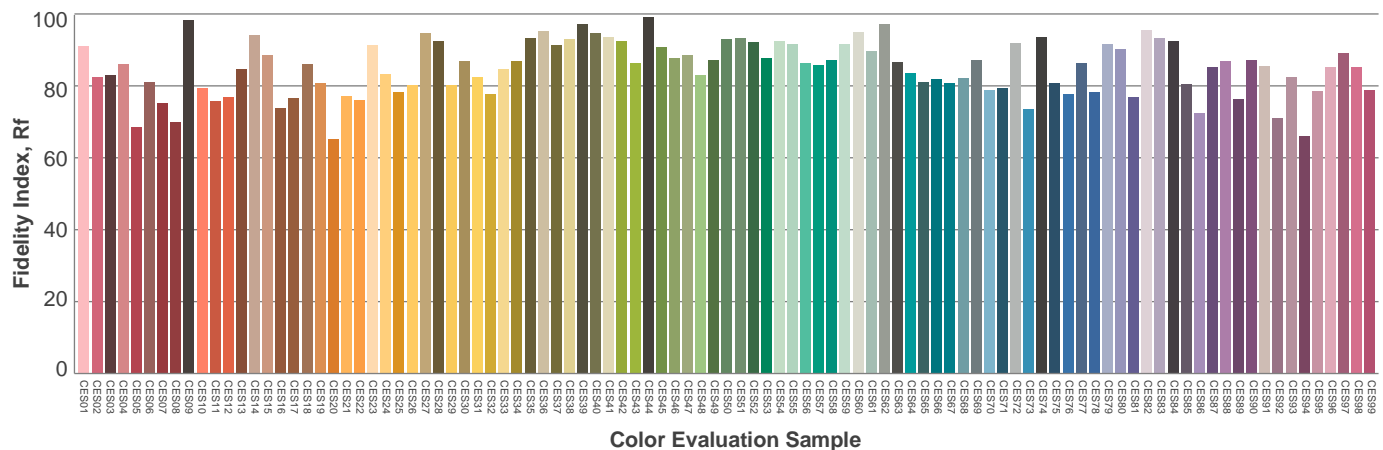
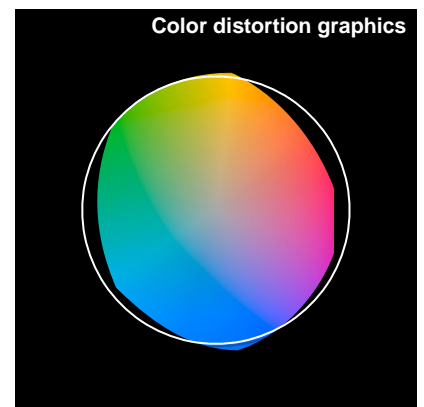
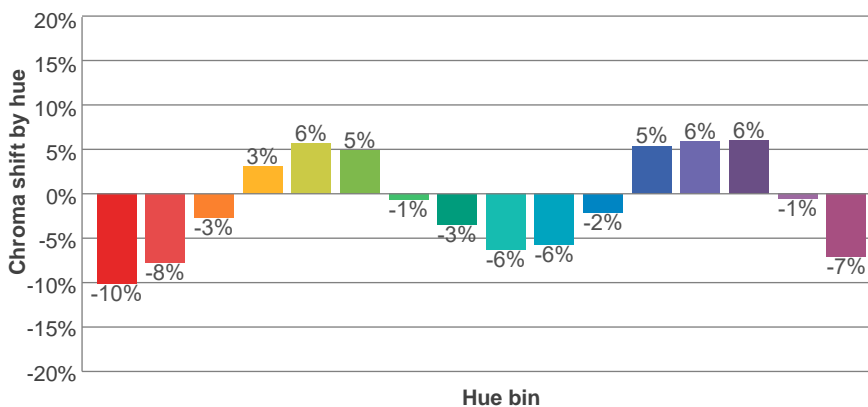
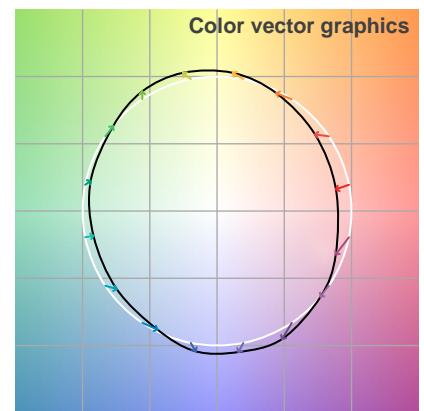
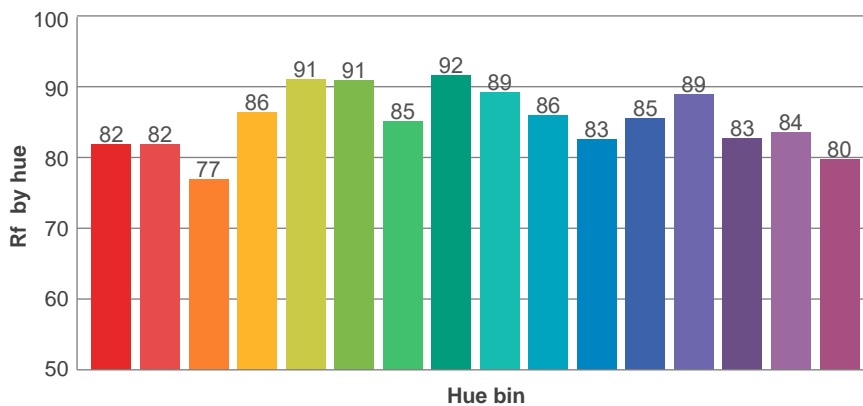
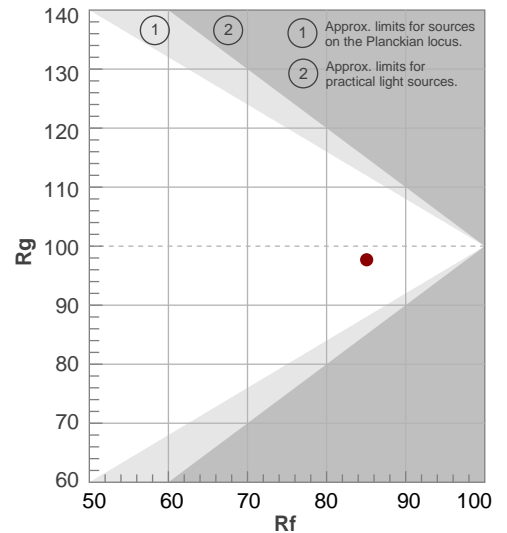
**Rf 85.1**

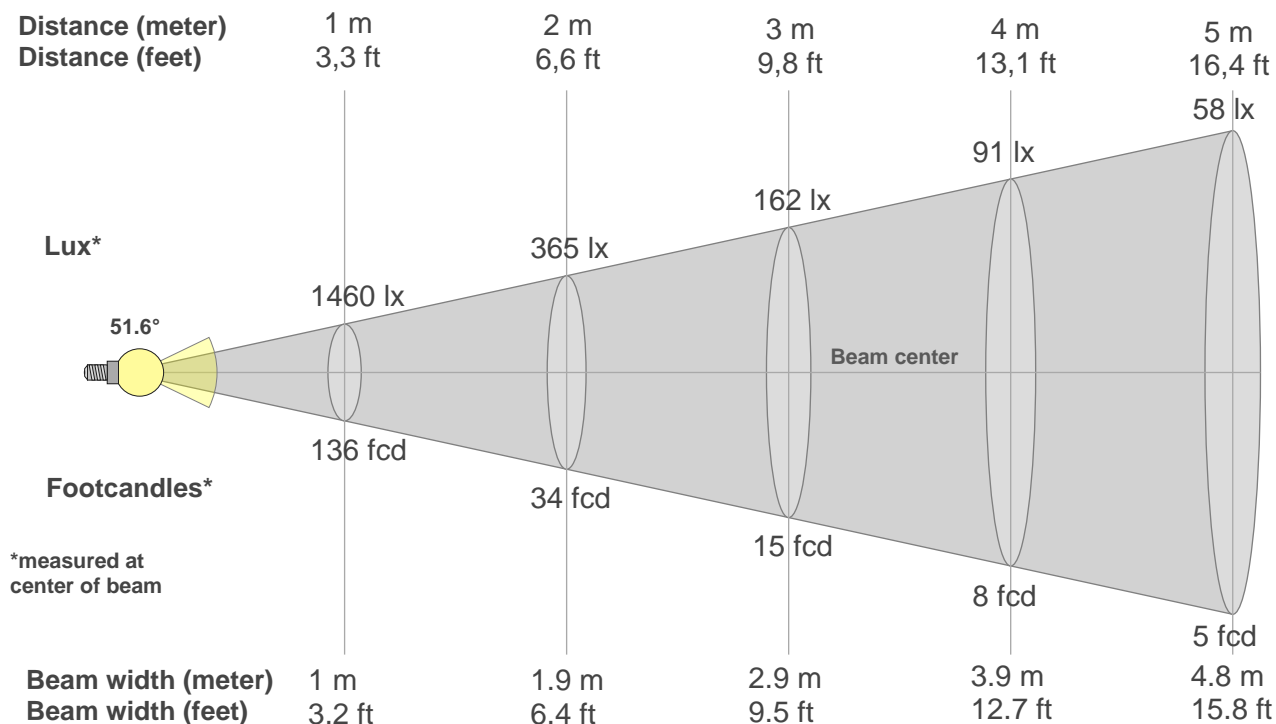
Fidelity index Rf

**Rg 97.7**

Gammut index Rg

Hue Bin	R <sub>f</sub>	Graphic shifts (%)	
		Chroma	Hue
1	82	-10%	-1%
2	82	-8%	7%
3	77	-3%	12%
4	86	3%	9%
5	91	6%	5%
6	91	5%	-3%
7	85	-1%	-9%
8	92	-3%	-4%
9	89	-6%	0%
10	86	-6%	7%
11	83	-2%	12%
12	85	5%	5%
13	89	6%	-5%
14	83	6%	-13%
15	84	-1%	-10%
16	80	-7%	-14%





#### Beam intensities from 1-20m

1m	2m	3m	4m	5m	6m	7m	8m	9m	10m	11m	12m	13m	14m	15m	16m	17m	18m	19m	20m
3.3ft	6.6ft	9.8ft	13.1ft	16.4ft	19.7ft	23ft	26.2ft	29.5ft	32.8ft	36.1ft	39.4ft	42.7ft	45.9ft	49.2ft	52.5ft	55.8ft	59.1ft	62.3ft	65.6ft
1460lx	365lx	162lx	91lx	58lx	41lx	30lx	23lx	18lx	15lx	12lx	10lx	9lx	7lx	6lx	6lx	5lx	5lx	4lx	4lx
135.7fcd	33.9fcd	15.1fcd	8.5fcd	5.4fcd	3.8fcd	2.8fcd	2.1fcd	1.7fcd	1.4fcd	1.1fcd	0.9fcd	0.8fcd	0.7fcd	0.6fcd	0.5fcd	0.5fcd	0.4fcd	0.4fcd	0.3fcd

#### Intensities in 0° c-plane

0°	2°	4°	6°	8°	10°	12°	14°	16°	18°	20°	22°	24°	26°	28°	30°	32°	34°	36°	38°
1460	1467	1477	1488	1500	1511	1509	1474	1415	1338	1228	1064	885	748	620	489	352	206	107	60
100%	100%	101%	102%	103%	103%	103%	101%	97%	92%	84%	73%	61%	51%	42%	34%	24%	14%	7%	4%

#### Intensities in 90° c-plane

0°	2°	4°	6°	8°	10°	12°	14°	16°	18°	20°	22°	24°	26°	28°	30°	32°	34°	36°	38°
1460	1471	1482	1493	1506	1505	1493	1461	1407	1332	1234	1070	899	745	613	482	351	216	114	58
100%	101%	101%	102%	103%	103%	102%	100%	96%	91%	85%	73%	62%	51%	42%	33%	24%	15%	8%	4%

#### Intensities in 180° c-plane

0°	2°	4°	6°	8°	10°	12°	14°	16°	18°	20°	22°	24°	26°	28°	30°	32°	34°	36°	38°
1460	1455	1452	1448	1443	1435	1419	1386	1336	1273	1194	1048	888	748	622	492	357	218	118	62
100%	100%	99%	99%	99%	98%	97%	95%	91%	87%	82%	72%	61%	51%	43%	34%	24%	15%	8%	4%

#### Intensities in 270° c-plane

0°	2°	4°	6°	8°	10°	12°	14°	16°	18°	20°	22°	24°	26°	28°	30°	32°	34°	36°	38°
1460	1450	1444	1442	1440	1436	1424	1398	1345	1276	1173	1033	870	745	624	495	357	219	104	60
100%	99%	99%	99%	99%	98%	98%	96%	92%	87%	80%	71%	60%	51%	43%	34%	24%	15%	7%	4%

Beam angle 50%	Field angle 10%	Cutoff angle 2,5%	Intensity ratio in 120° cone	Intensity ratio in 90° cone
51.6°	70.2°	80.9°	97.5%	95.1%