

Light efficiency:

39 Lumen/Watt

Light quality:

CRI: 91.5

Color temperature:

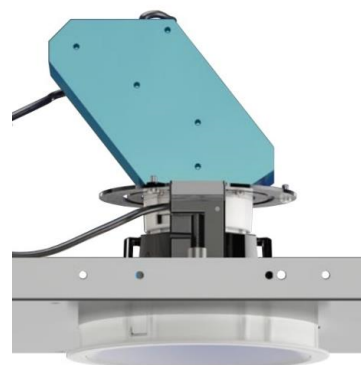
2998 K

Output: 1002 lm

Peak: 2607 cd

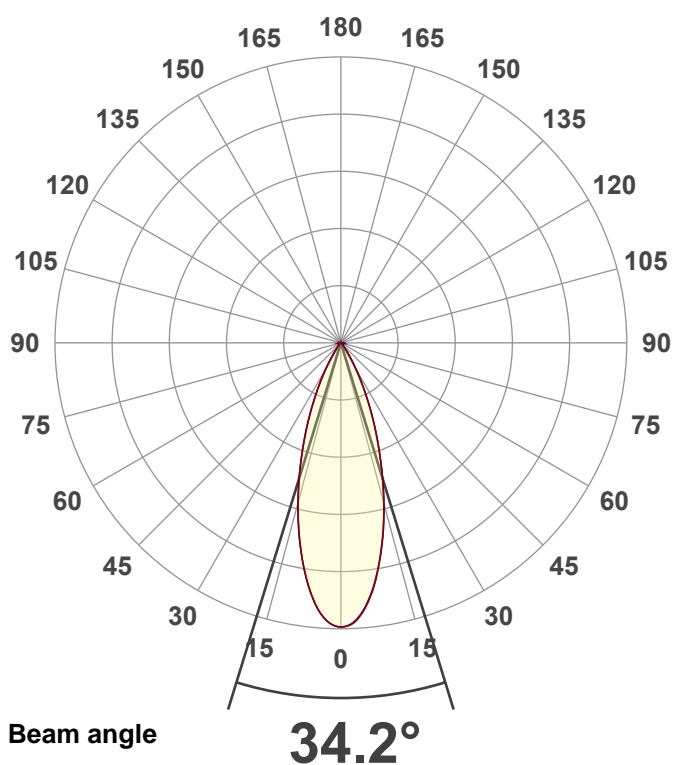
Power: 25.6 W

PF: 0.96



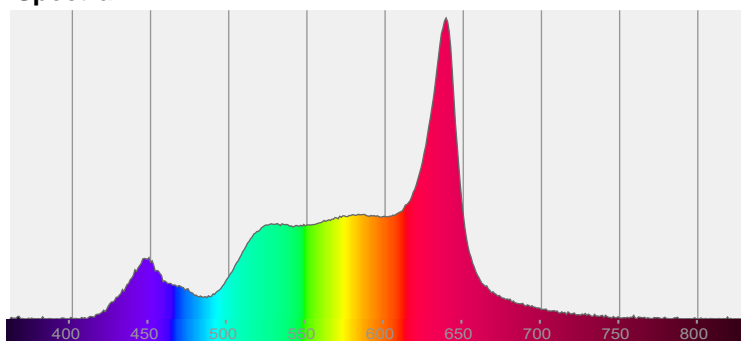
NU4-RD-RGBW-10LM-30K-90-35D-NL-WH-WH

Date and time:
5/9/2022 10:40:56 AM

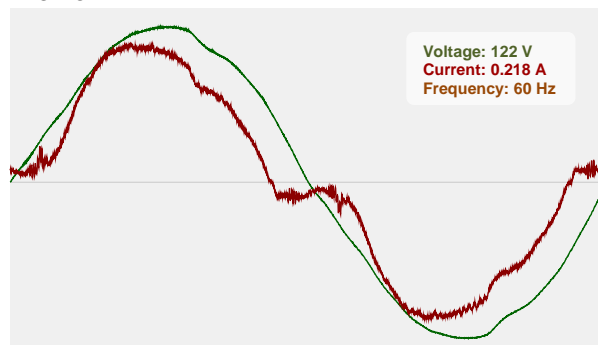


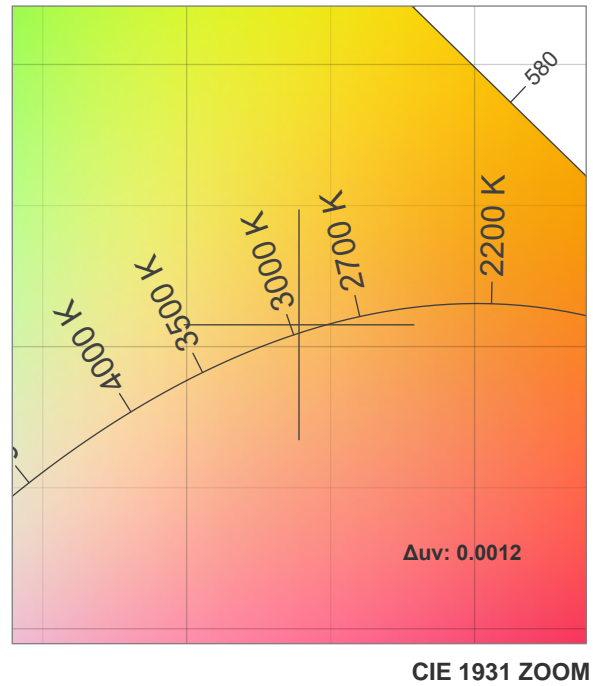
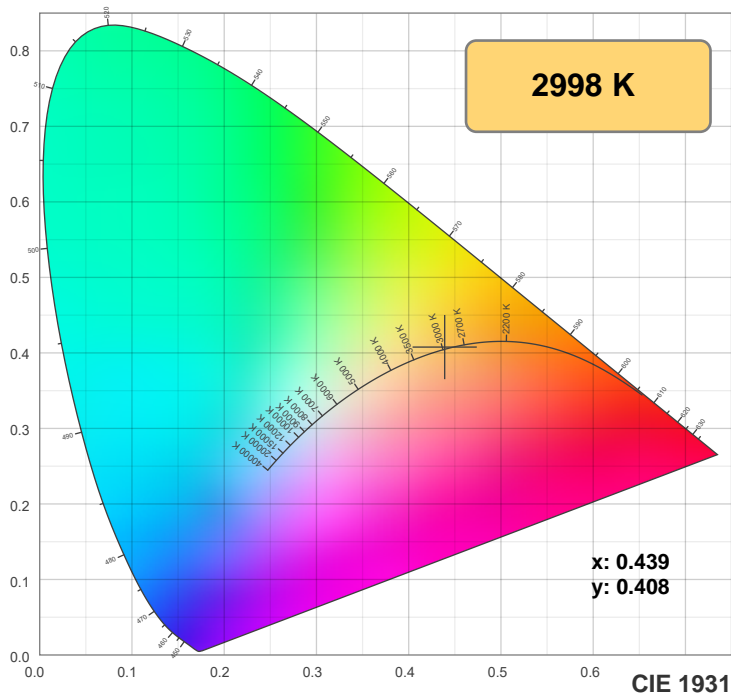
CIE 1931
x: 0.439
y: 0.408

Spectra

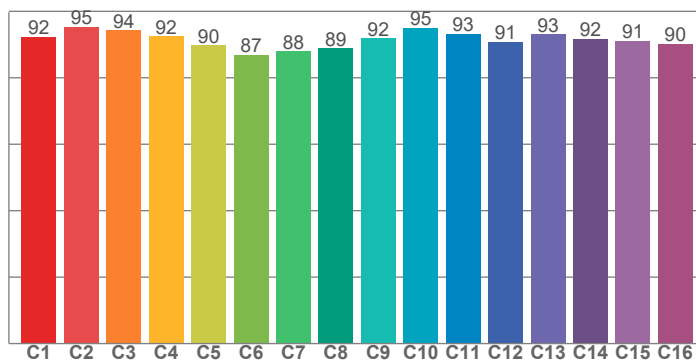


Power

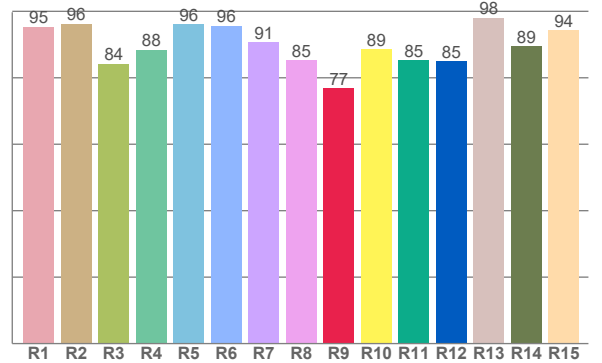




TM30: 91.9



CRI: 91.5 (R1-R8)



CRI R values, only R1-R8 are used to calculate final CRI value

R1	R2	R3	R4	R5	R6	R7	R8	R9	R10	R11	R12	R13	R14	R15
95.4	96.3	84.3	88.5	96.2	95.7	90.7	85.4	76.8	88.6	85.3	85.0	98.0	89.4	94.4

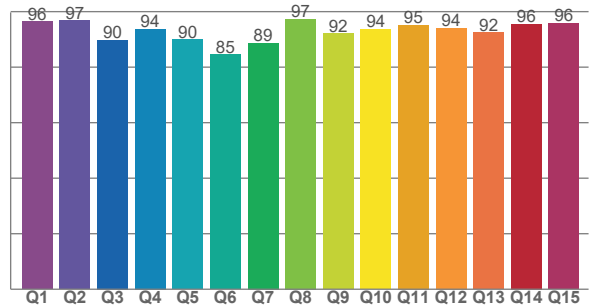
TM30 C values, 16 binned values out of total of 99 C values

C1	C2	C3	C4	C5	C6	C7	C8	C9	C10	C11	C12	C13	C14	C15	C16
92.3	95.3	94.3	92.5	89.8	86.9	88.0	88.8	91.9	95.1	93.2	90.8	93.0	91.7	91.0	90.3

CQS Q values

Q1	Q2	Q3	Q4	Q5	Q6	Q7	Q8	Q9	Q10	Q11	Q12	Q13	Q14	Q15
96.4	96.8	89.8	93.8	89.9	84.5	88.7	97.3	92.1	93.6	95.3	94.0	92.4	95.6	95.8

CQS: 92.1



Color parameters

Color temperature	Color rendering index	Red component	Color fidelity	Color gamut	Color quality scale	Color coordinate cie 1931	Color coordinate cie 1931	Color coordinate	Color coordinate	Color deviation from black body
CCT	CRI	CRI R9	TM30 Rf	TM30 Rg	CQS	x	y	u	v	Δuv
2998 K	91.5	76.8	91.9	106.4	92.1	0.439	0.408	0.250	0.349	0.0012

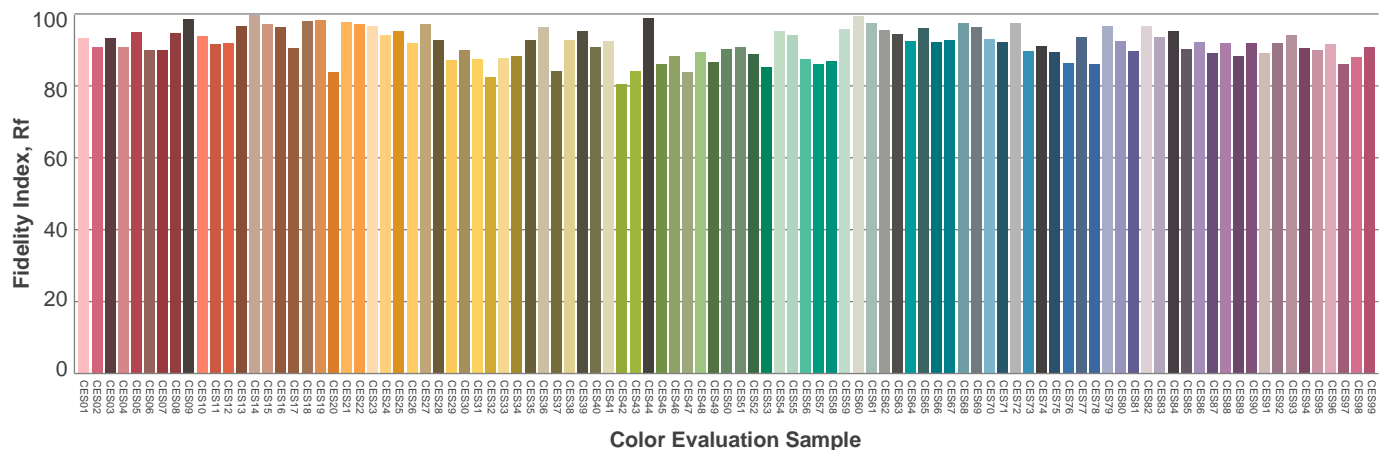
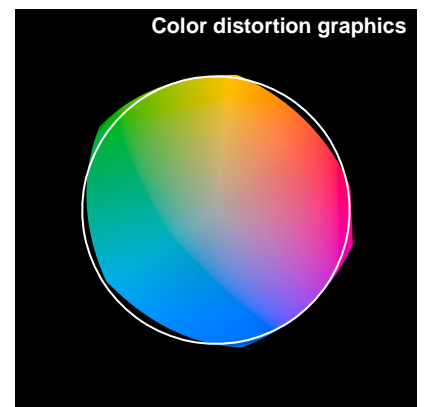
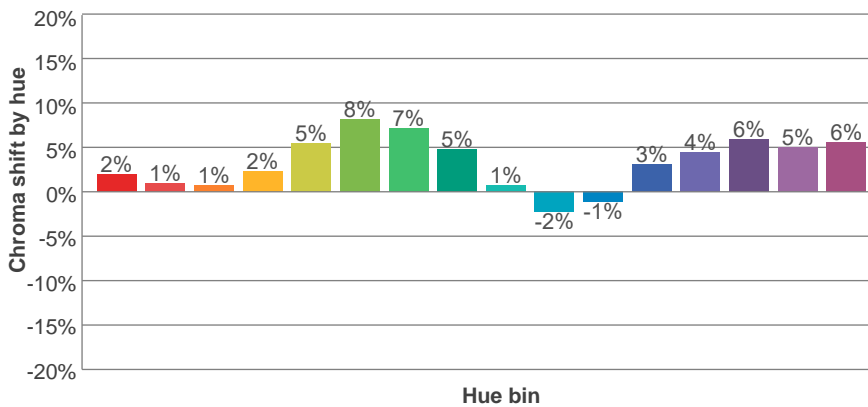
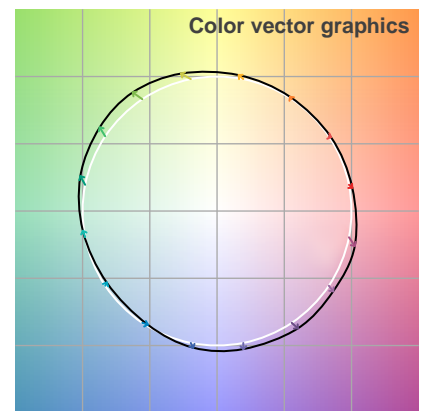
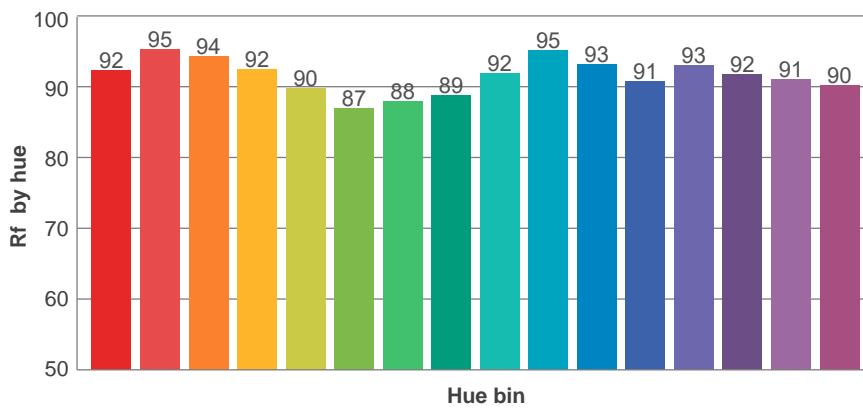
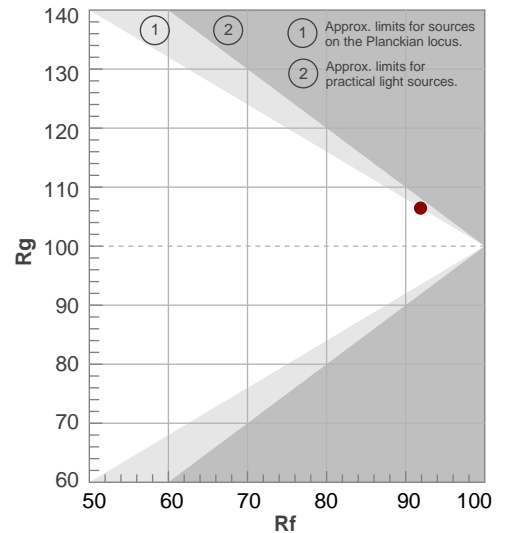
Rf 91.9

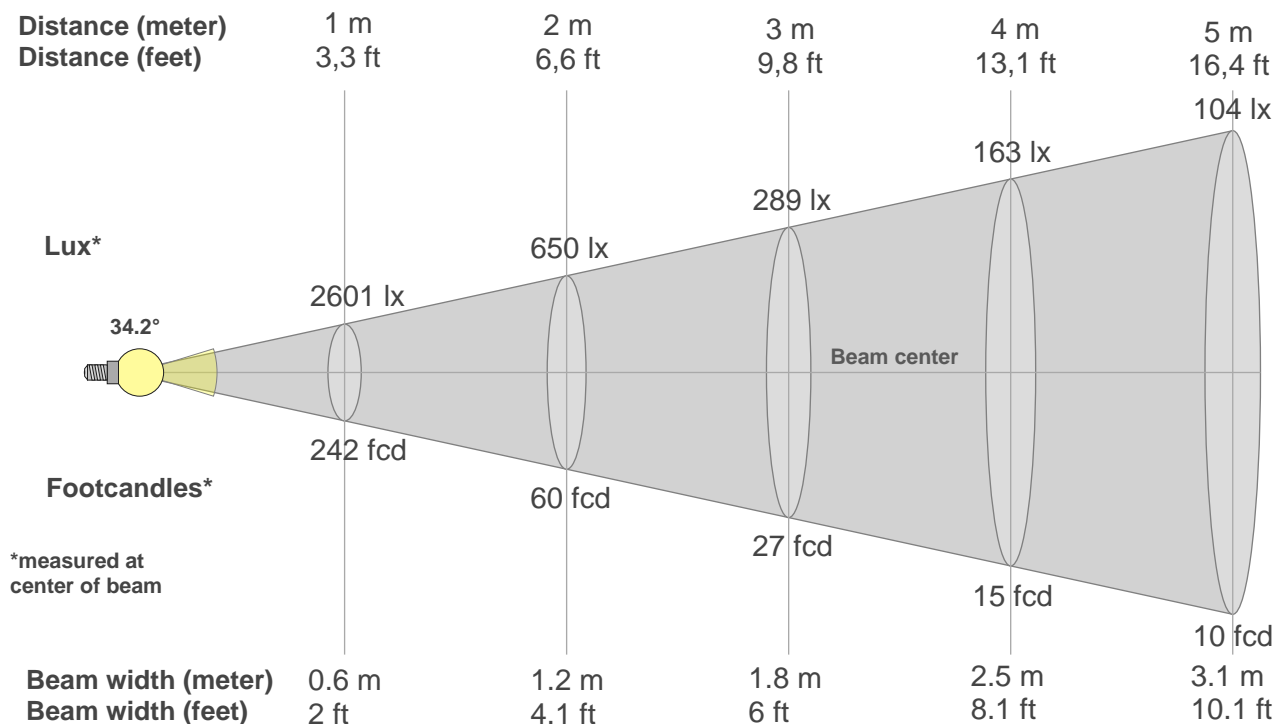
Fidelity index Rf

Rg 106.4

Gammut index Rg

Hue Bin	R _f	Graphic shifts (%)	
		Chroma	Hue
1	92	2%	-3%
2	95	1%	-1%
3	94	1%	2%
4	92	2%	4%
5	90	5%	6%
6	87	8%	3%
7	88	7%	-3%
8	89	5%	-6%
9	92	1%	-5%
10	95	-2%	-1%
11	93	-1%	4%
12	91	3%	2%
13	93	4%	-1%
14	92	6%	2%
15	91	5%	-2%
16	90	6%	-5%





Beam intensities from 1-20m

1m	2m	3m	4m	5m	6m	7m	8m	9m	10m	11m	12m	13m	14m	15m	16m	17m	18m	19m	20m
3.3ft	6.6ft	9.8ft	13.1ft	16.4ft	19.7ft	23ft	26.2ft	29.5ft	32.8ft	36.1ft	39.4ft	42.7ft	45.9ft	49.2ft	52.5ft	55.8ft	59.1ft	62.3ft	65.6ft
2601lx	650lx	289lx	163lx	104lx	72lx	53lx	41lx	32lx	26lx	21lx	18lx	15lx	13lx	12lx	10lx	9lx	8lx	7lx	7lx
241.6fcd	60.4fcd	26.8fcd	15.1fcd	9.7fcd	6.7fcd	4.9fcd	3.8fcd	3fcd	2.4fcd	2fcd	1.7fcd	1.4fcd	1.2fcd	1.1fcd	0.9fcd	0.8fcd	0.7fcd	0.7fcd	0.6fcd

Intensities in 0° c-plane

0°	2°	4°	6°	8°	10°	12°	14°	16°	18°	20°	22°	24°	26°	28°	30°	32°	34°	36°	38°
2601	2577	2504	2385	2231	2038	1840	1631	1418	1209	1009	829	661	508	376	267	185	123	79	51
100%	99%	96%	92%	86%	78%	71%	63%	55%	46%	39%	32%	25%	20%	14%	10%	7%	5%	3%	2%

Intensities in 90° c-plane

0°	2°	4°	6°	8°	10°	12°	14°	16°	18°	20°	22°	24°	26°	28°	30°	32°	34°	36°	38°
2601	2576	2495	2373	2216	2032	1832	1626	1416	1209	1011	830	665	517	386	275	187	126	82	54
100%	99%	96%	91%	85%	78%	70%	63%	54%	46%	39%	32%	26%	20%	15%	11%	7%	5%	3%	2%

Intensities in 180° c-plane

0°	2°	4°	6°	8°	10°	12°	14°	16°	18°	20°	22°	24°	26°	28°	30°	32°	34°	36°	38°
2601	2578	2496	2368	2207	2025	1826	1621	1415	1212	1017	839	674	525	393	282	190	126	82	53
100%	99%	96%	91%	85%	78%	70%	62%	54%	47%	39%	32%	26%	20%	15%	11%	7%	5%	3%	2%

Intensities in 270° c-plane

0°	2°	4°	6°	8°	10°	12°	14°	16°	18°	20°	22°	24°	26°	28°	30°	32°	34°	36°	38°
2601	2571	2493	2371	2212	2024	1827	1621	1413	1209	1011	829	661	511	379	268	185	124	80	52
100%	99%	96%	91%	85%	78%	70%	62%	54%	46%	39%	32%	25%	20%	15%	10%	7%	5%	3%	2%

Beam angle 50%	Field angle 10%	Cutoff angle 2,5%	Intensity ratio in 120° cone	Intensity ratio in 90° cone
34.2°	60.5°	73.9°	99.3%	98.2%