

Light efficiency:

53 Lumen/Watt

Light quality:

CRI: 96.2

Color temperature:

3124 K

Output: 1354 lm

Peak: 3782 cd

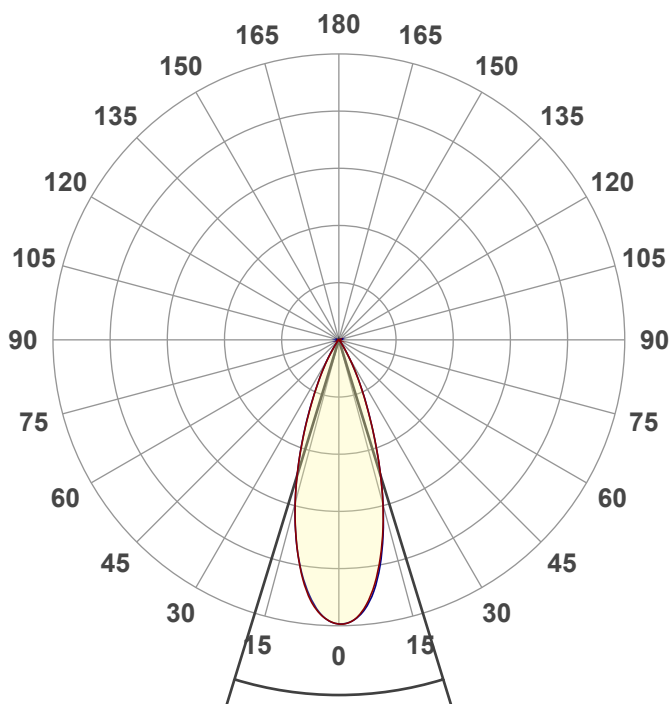
Power: 25.7 W

PF: 0.98



NU3-RA-WD-20LM-3018-97-35D-NA-CL-WH-WH

Date and time:
7/1/2022 11:49:33 AM



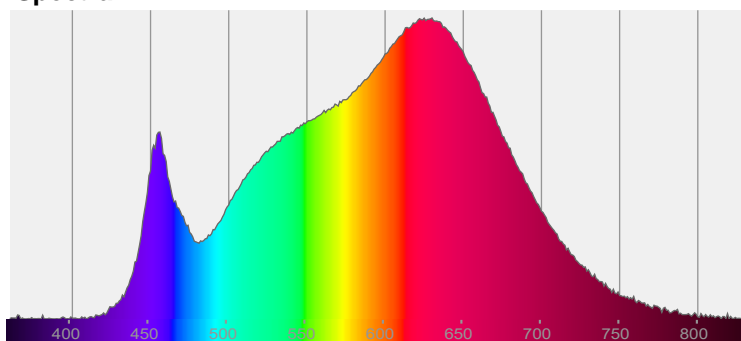
Beam angle

34.2°

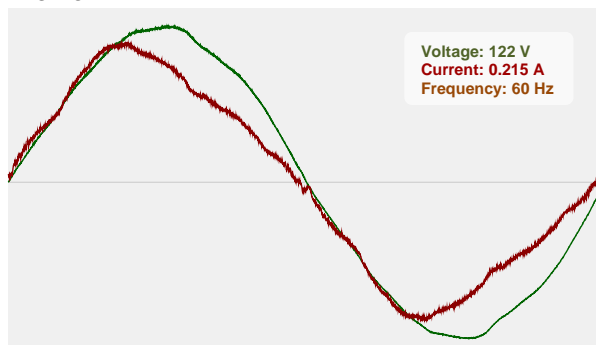


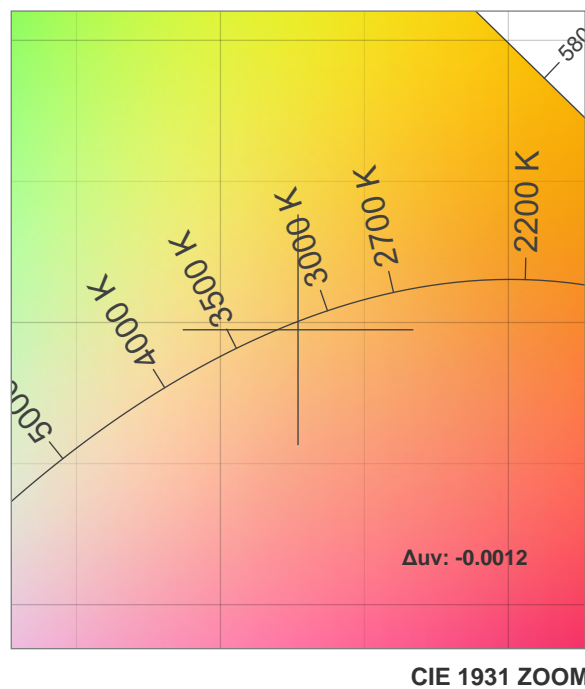
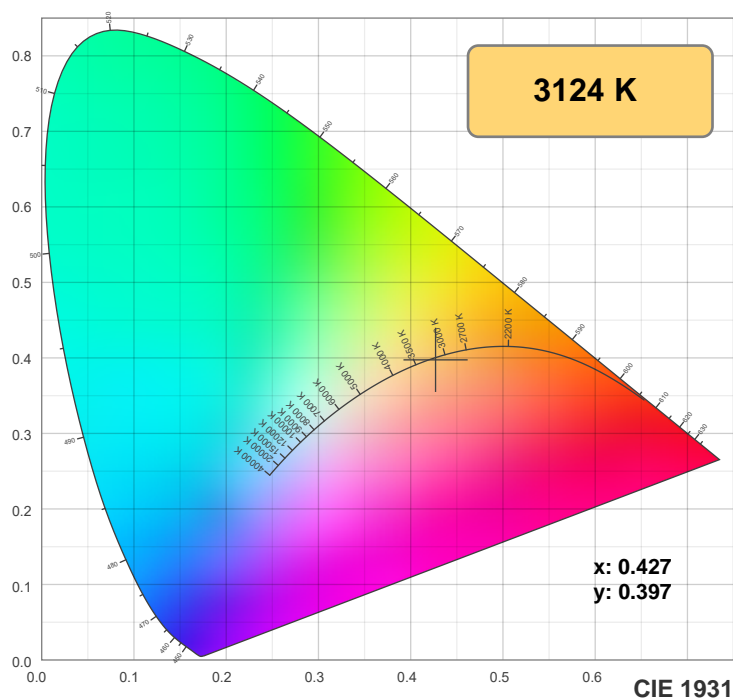
CIE 1931
x: 0.427
y: 0.397

Spectra

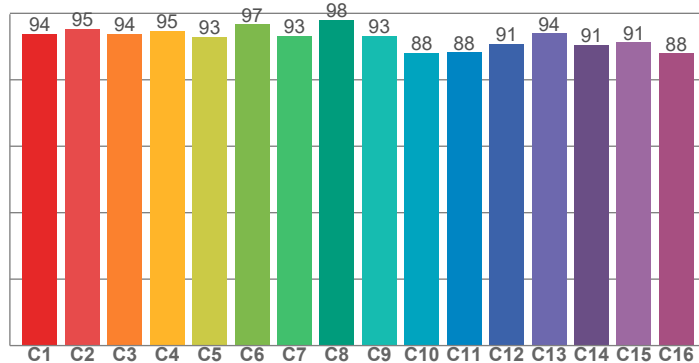


Power

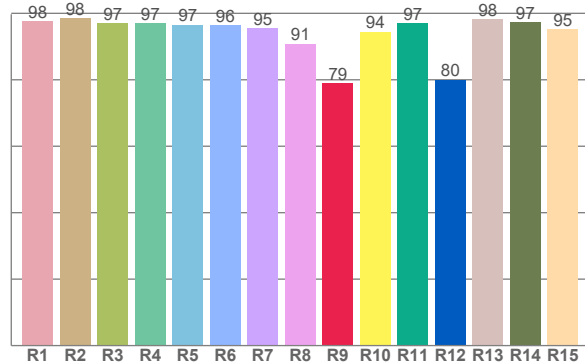




TM30: 92.7



CRI: 96.2 (R1-R8)



CRI R values, only R1-R8 are used to calculate final CRI value

R1	R2	R3	R4	R5	R6	R7	R8	R9	R10	R11	R12	R13	R14	R15
97.6	98.5	97.0	96.9	96.5	96.5	95.5	90.9	79.0	94.4	97.1	80.0	98.2	97.4	95.3

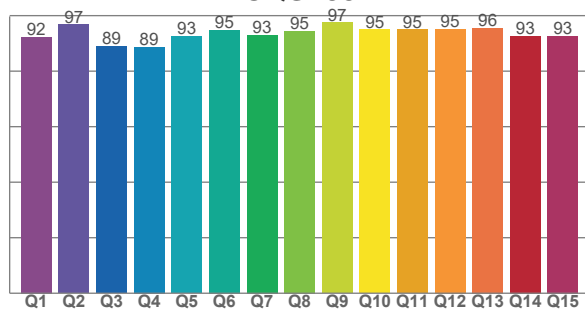
TM30 C values, 16 binned values out of total of 99 C values

C1	C2	C3	C4	C5	C6	C7	C8	C9	C10	C11	C12	C13	C14	C15	C16
93.8	95.4	93.8	94.8	93.0	96.7	93.2	98.0	93.1	88.0	88.2	90.9	94.0	90.5	91.3	88.0

CQS Q values

Q1	Q2	Q3	Q4	Q5	Q6	Q7	Q8	Q9	Q10	Q11	Q12	Q13	Q14	Q15
92.3	96.8	88.9	88.7	92.6	94.9	93.1	94.5	97.5	95.0	94.9	95.3	95.6	92.7	92.6

CQS: 93.1



Color parameters

Color temperature	Color rendering index	Red component	Color fidelity	Color gamut	Color quality scale	Color coordinate cie 1931	Color coordinate cie 1931	Color coordinate	Color coordinate	Color deviation from black body
CCT	CRI	CRI R9	TM30 Rf	TM30 Rg	CQS	x	y	u	v	Δuv
3124 K	96.2	79.0	92.7	100.1	93.1	0.427	0.397	0.247	0.345	-0.0012

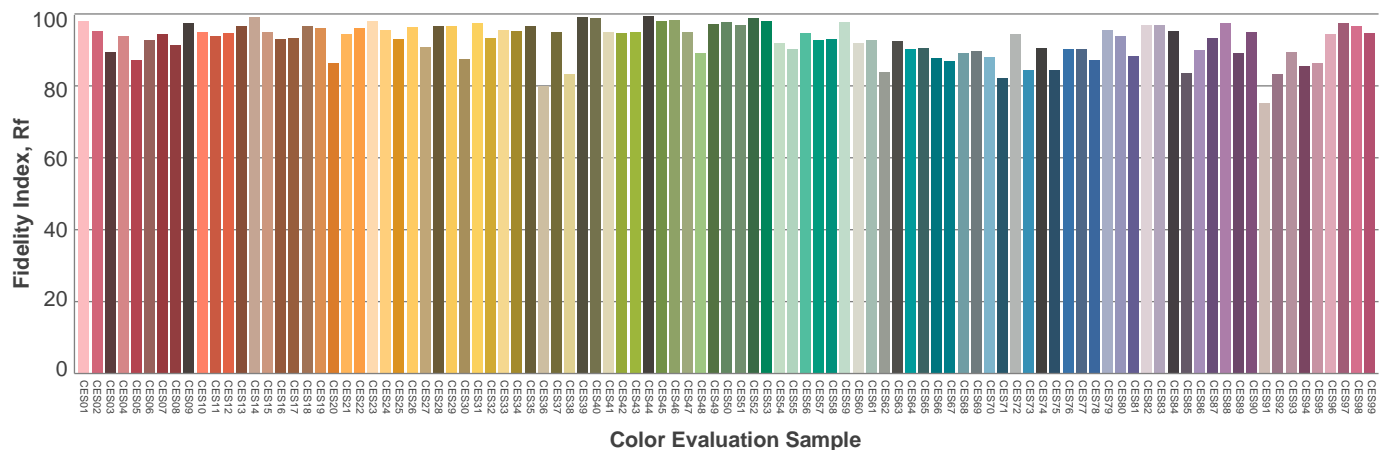
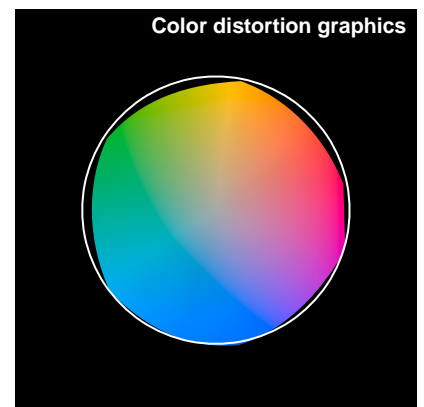
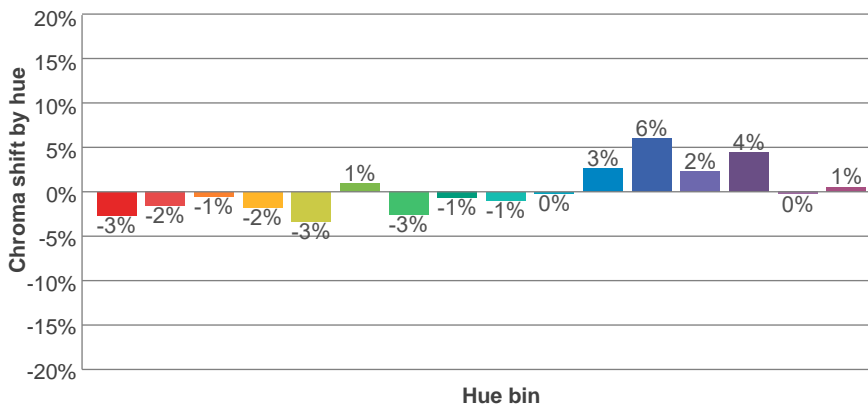
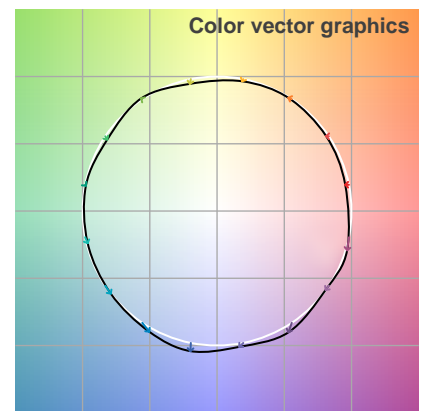
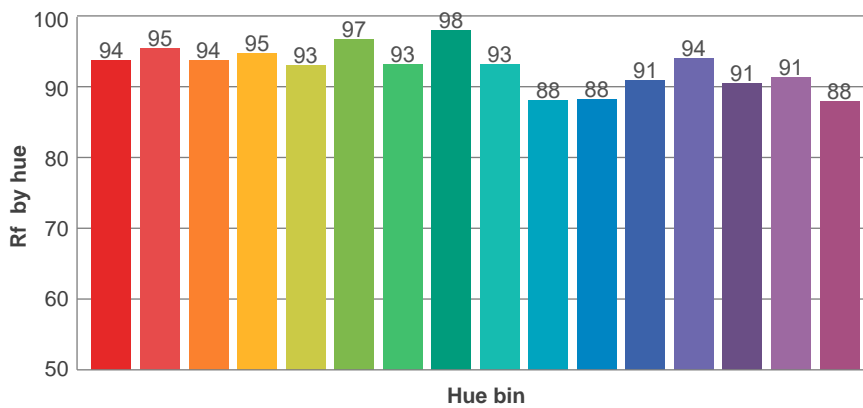
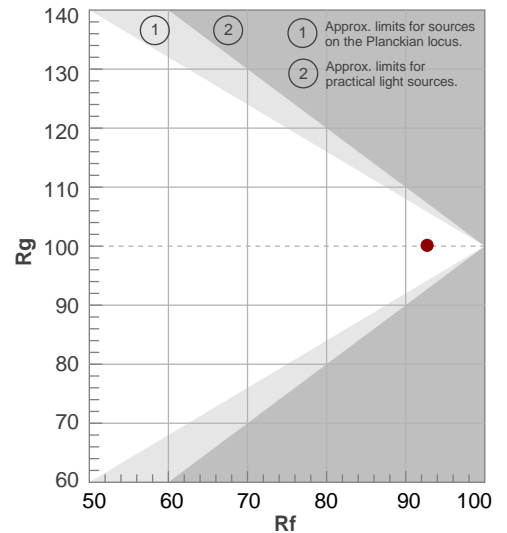
Rf 92.7

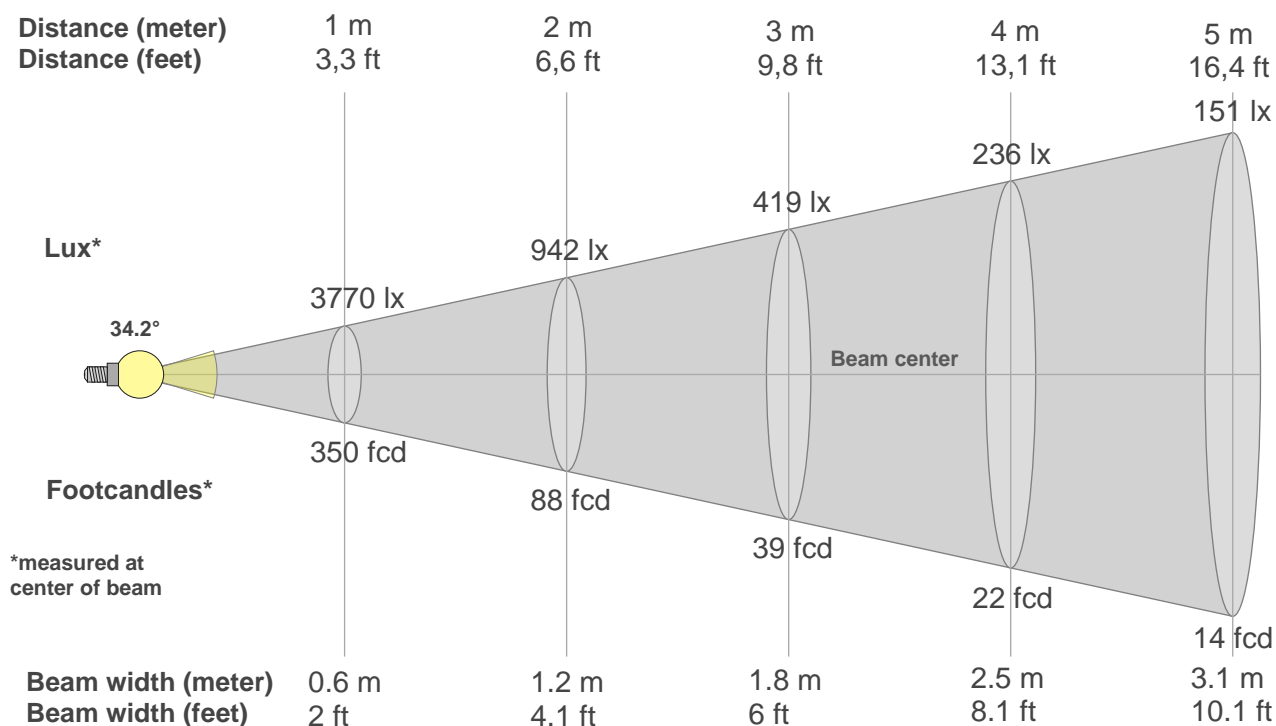
Fidelity index Rf

Rg 100.1

Gammut index Rg

Hue Bin	R _f	Graphic shifts (%)	
		Chroma	Hue
1	94	-3%	1%
2	95	-2%	1%
3	94	-1%	3%
4	95	-2%	0%
5	93	-3%	1%
6	97	1%	0%
7	93	-3%	1%
8	98	-1%	1%
9	93	-1%	5%
10	88	0%	7%
11	88	3%	8%
12	91	6%	1%
13	94	2%	-3%
14	91	4%	-6%
15	91	0%	-4%
16	88	1%	-10%





Beam intensities from 1-20m

1m	2m	3m	4m	5m	6m	7m	8m	9m	10m	11m	12m	13m	14m	15m	16m	17m	18m	19m	20m
3.3ft	6.6ft	9.8ft	13.1ft	16.4ft	19.7ft	23ft	26.2ft	29.5ft	32.8ft	36.1ft	39.4ft	42.7ft	45.9ft	49.2ft	52.5ft	55.8ft	59.1ft	62.3ft	65.6ft
3770lx	942lx	419lx	236lx	151lx	105lx	77lx	59lx	47lx	38lx	31lx	26lx	22lx	19lx	17lx	15lx	13lx	12lx	10lx	9lx
350.2fcd	87.6fcd	38.9fcd	21.9fcd	14fcd	9.7fcd	7.1fcd	5.5fcd	4.3fcd	3.5fcd	2.9fcd	2.4fcd	2.1fcd	1.8fcd	1.6fcd	1.4fcd	1.2fcd	1.1fcd	1fcd	0.9fcd

Intensities in 0° c-plane

0°	2°	4°	6°	8°	10°	12°	14°	16°	18°	20°	22°	24°	26°	28°	30°	32°	34°	36°	38°
3770	3753	3676	3532	3319	3054	2756	2433	2089	1728	1385	1081	825	614	438	283	175	105	62	37
100%	100%	98%	94%	88%	81%	73%	65%	55%	46%	37%	29%	22%	16%	12%	7%	5%	3%	2%	1%

Intensities in 90° c-plane

0°	2°	4°	6°	8°	10°	12°	14°	16°	18°	20°	22°	24°	26°	28°	30°	32°	34°	36°	38°
3770	3752	3682	3554	3365	3100	2787	2448	2091	1726	1372	1079	827	607	418	263	159	98	57	32
100%	100%	98%	94%	89%	82%	74%	65%	55%	46%	36%	29%	22%	16%	11%	7%	4%	3%	2%	1%

Intensities in 180° c-plane

0°	2°	4°	6°	8°	10°	12°	14°	16°	18°	20°	22°	24°	26°	28°	30°	32°	34°	36°	38°
3770	3732	3646	3500	3282	3017	2720	2405	2077	1738	1405	1100	839	626	453	306	193	116	70	44
100%	99%	97%	93%	87%	80%	72%	64%	55%	46%	37%	29%	22%	17%	12%	8%	5%	3%	2%	1%

Intensities in 270° c-plane

0°	2°	4°	6°	8°	10°	12°	14°	16°	18°	20°	22°	24°	26°	28°	30°	32°	34°	36°	38°
3770	3736	3637	3469	3259	3008	2723	2409	2075	1736	1412	1112	844	620	451	315	204	124	76	49
100%	99%	96%	92%	86%	80%	72%	64%	55%	46%	37%	29%	22%	16%	12%	8%	5%	3%	2%	1%

Beam angle 50%	Field angle 10%	Cutoff angle 2,5%	Intensity ratio in 120° cone	Intensity ratio in 90° cone
34.2°	57.6°	69.1°	99.7%	99.0%