

Light efficiency:

46 Lumen/Watt

Light quality:

CRI: 82.1

Color temperature:

3098 K

Output: 1384 lm

Peak: 1748 cd

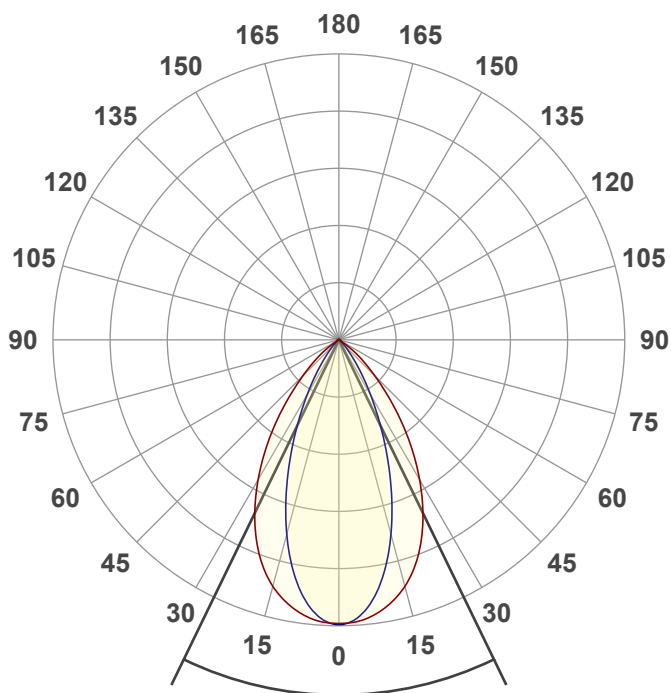
Power: 30.3 W

PF: 0.98



NU3-RA-SW-20LM-30K-80-15D-EA-NL-WH

Date and time:
6/13/2022 11:09:23 AM



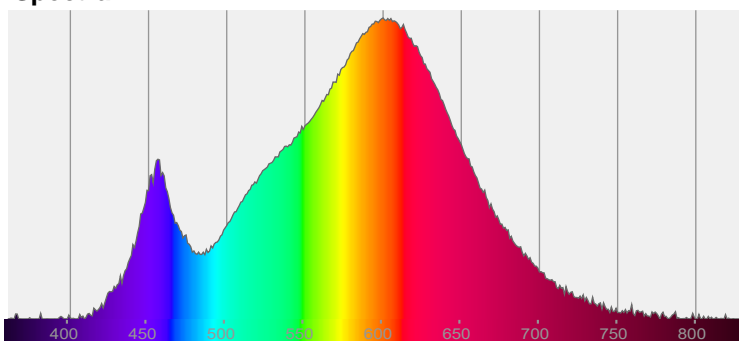
Beam angle

51.8°

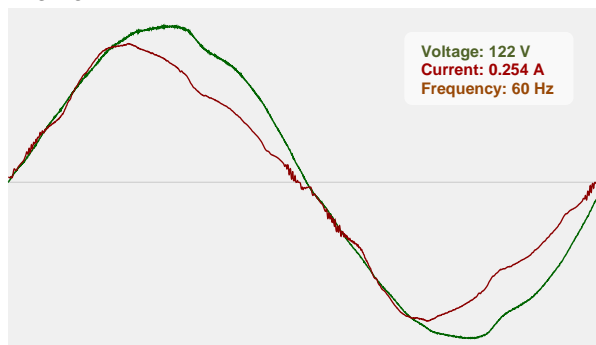


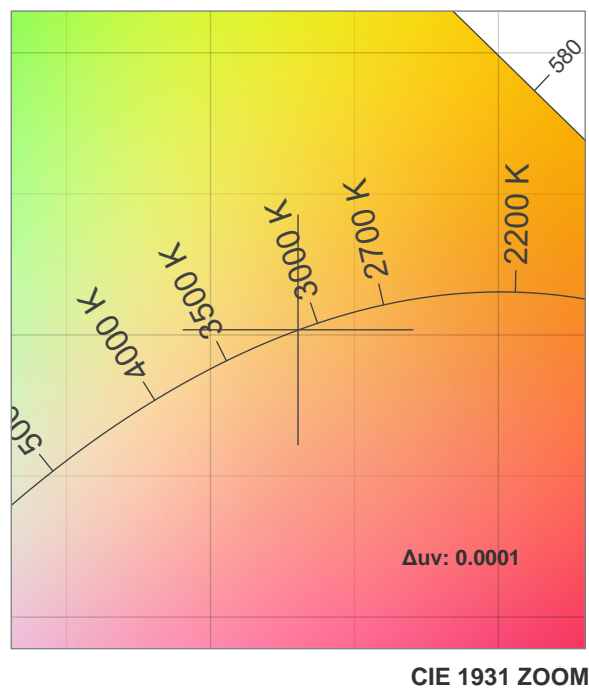
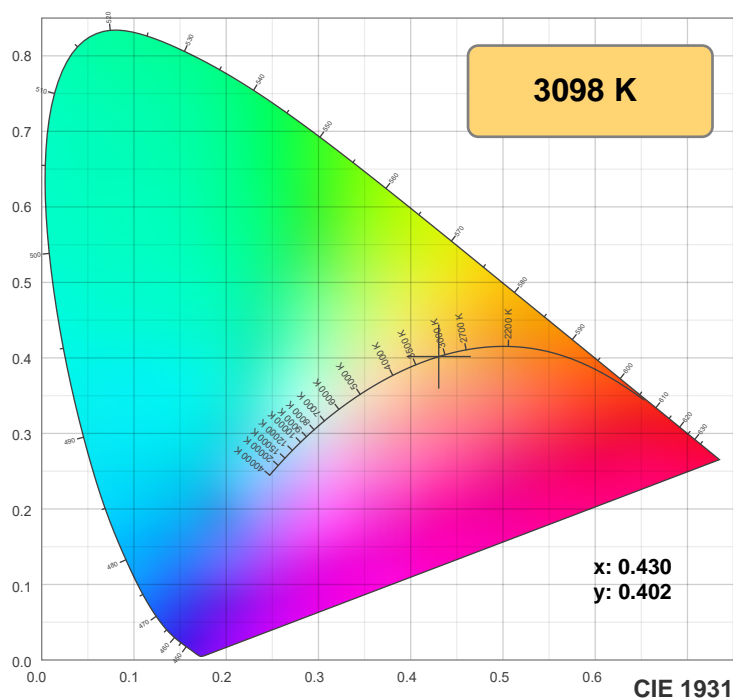
CIE 1931
x: 0.430
y: 0.402

Spectra

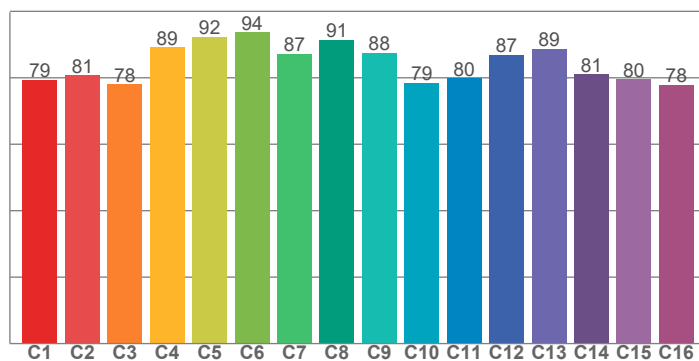


Power

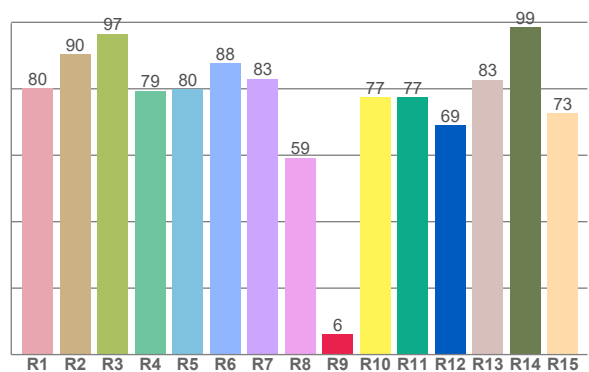




TM30: 84.4



CRI: 82.1 (R1-R8)



CRI R values, only R1-R8 are used to calculate final CRI value

R1	R2	R3	R4	R5	R6	R7	R8	R9	R10	R11	R12	R13	R14	R15
80.2	90.4	96.6	79.4	79.9	87.7	83.1	59.2	6.1	77.4	77.5	69.0	82.7	98.6	72.7

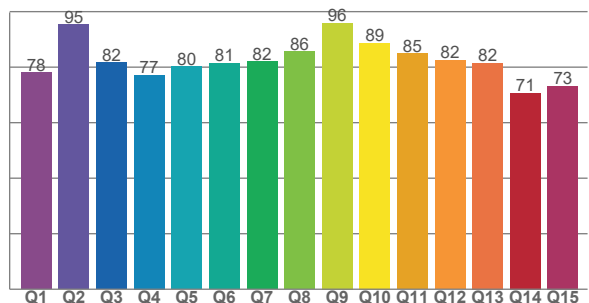
TM30 C values, 16 binned values out of total of 99 C values

C1	C2	C3	C4	C5	C6	C7	C8	C9	C10	C11	C12	C13	C14	C15	C16
79.3	80.8	78.0	89.2	92.3	93.7	87.2	91.3	87.5	78.5	79.8	86.9	88.7	81.0	79.6	77.9

CQS Q values

Q1	Q2	Q3	Q4	Q5	Q6	Q7	Q8	Q9	Q10	Q11	Q12	Q13	Q14	Q15
78.1	95.4	81.6	77.1	80.3	81.4	82.1	85.6	95.9	88.7	84.8	82.5	81.6	70.7	73.2

CQS: 81.2



Color parameters

Color temperature	Color rendering index	Red component	Color fidelity	Color gamut	Color quality scale	Color coordinate cie 1931	Color coordinate cie 1931	Color coordinate	Color coordinate	Color deviation from black body
CCT	CRI	CRI R9	TM30 Rf	TM30 Rg	CQS	x	y	u	v	Δuv
3098 K	82.1	6.1	84.4	95.1	81.2	0.430	0.402	0.247	0.346	0.0001

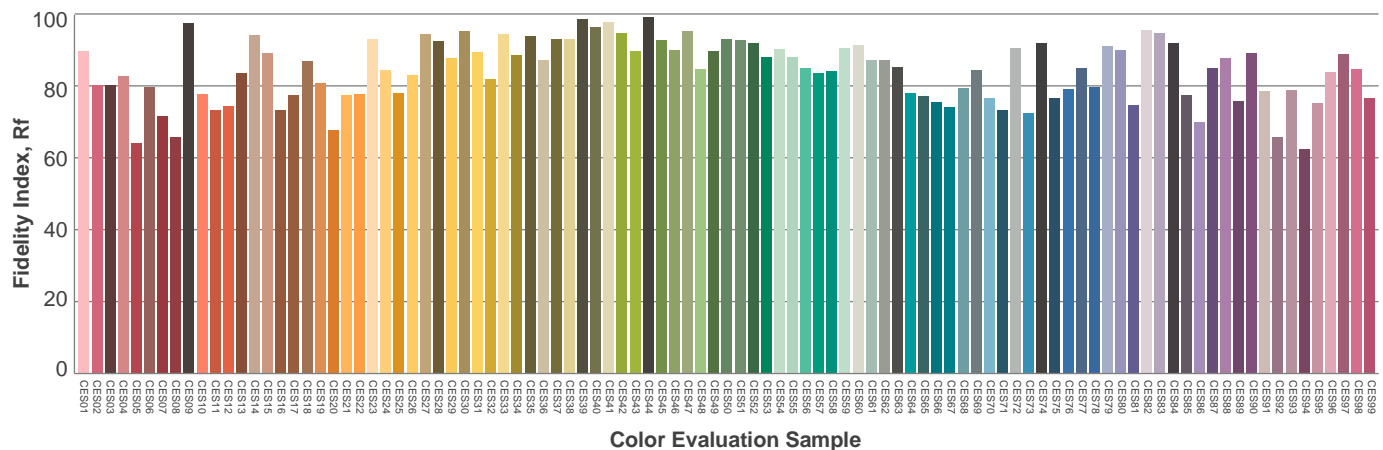
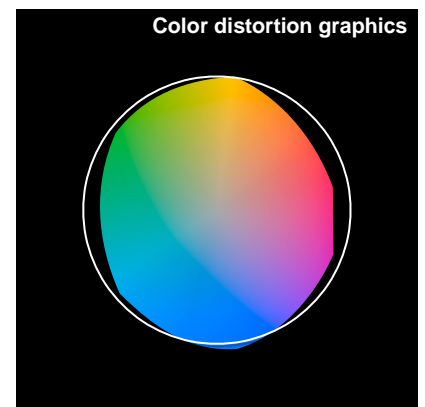
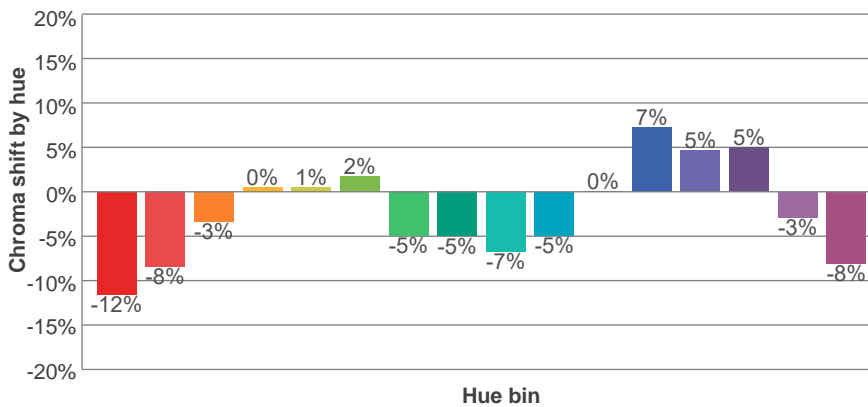
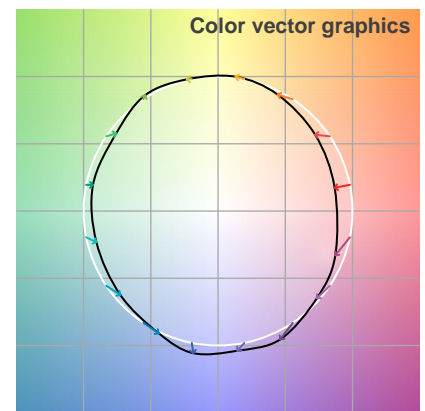
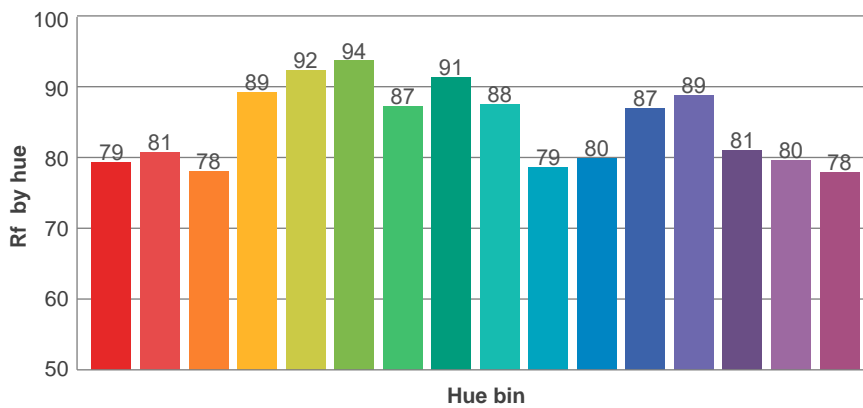
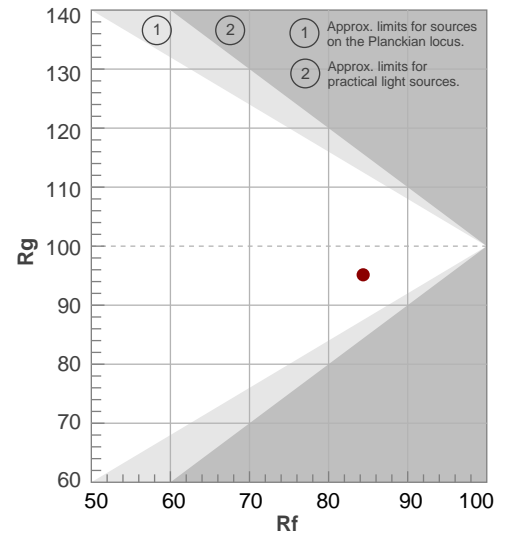
Rf 84.4

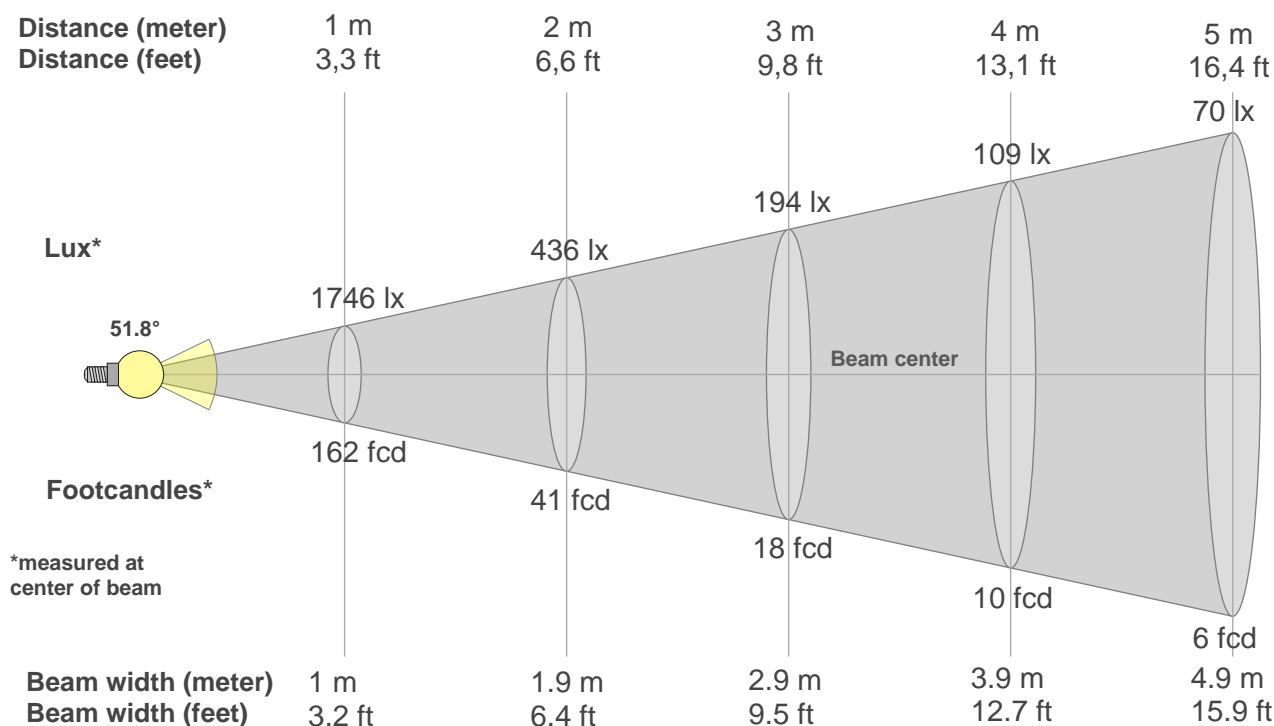
Fidelity index Rf

Rg 95.1

Gamut index Rg

Hue Bin	R _f	Graphic shifts (%)	
		Chroma	Hue
1	79	-12%	0%
2	81	-8%	7%
3	78	-3%	11%
4	89	0%	7%
5	92	1%	4%
6	94	2%	-3%
7	87	-5%	-6%
8	91	-5%	-1%
9	88	-7%	5%
10	79	-5%	11%
11	80	0%	14%
12	87	7%	3%
13	89	5%	-6%
14	81	5%	-15%
15	80	-3%	-13%
16	78	-8%	-15%





Beam intensities from 1-20m

1m	2m	3m	4m	5m	6m	7m	8m	9m	10m	11m	12m	13m	14m	15m	16m	17m	18m	19m	20m
3.3ft	6.6ft	9.8ft	13.1ft	16.4ft	19.7ft	23ft	26.2ft	29.5ft	32.8ft	36.1ft	39.4ft	42.7ft	45.9ft	49.2ft	52.5ft	55.8ft	59.1ft	62.3ft	65.6ft
1746lx	436lx	194lx	109lx	70lx	48lx	36lx	27lx	22lx	17lx	14lx	12lx	10lx	9lx	8lx	7lx	6lx	5lx	5lx	4lx
162.2fcd	40.5fcd	18fcd	10.1fcd	6.5fcd	4.5fcd	3.3fcd	2.5fcd	2fcd	1.6fcd	1.3fcd	1.1fcd	1fcd	0.8fcd	0.7fcd	0.6fcd	0.6fcd	0.5fcd	0.4fcd	0.4fcd

Intensities in 0° c-plane

0°	2°	4°	6°	8°	10°	12°	14°	16°	18°	20°	22°	24°	26°	28°	30°	32°	34°	36°	38°
1746	1740	1732	1717	1695	1667	1631	1590	1541	1484	1419	1344	1263	1177	1086	992	896	798	700	604
100%	100%	99%	98%	97%	95%	93%	91%	88%	85%	81%	77%	72%	67%	62%	57%	51%	46%	40%	35%

Intensities in 90° c-plane

0°	2°	4°	6°	8°	10°	12°	14°	16°	18°	20°	22°	24°	26°	28°	30°	32°	34°	36°	38°
1746	1736	1707	1657	1587	1501	1403	1294	1177	1055	930	808	690	579	479	390	312	243	184	136
100%	99%	98%	95%	91%	86%	80%	74%	67%	60%	53%	46%	40%	33%	27%	22%	18%	14%	11%	8%

Intensities in 180° c-plane

0°	2°	4°	6°	8°	10°	12°	14°	16°	18°	20°	22°	24°	26°	28°	30°	32°	34°	36°	38°
1746	1740	1732	1717	1695	1667	1631	1590	1541	1484	1419	1344	1263	1177	1086	992	896	798	700	604
100%	100%	99%	98%	97%	95%	93%	91%	88%	85%	81%	77%	72%	67%	62%	57%	51%	46%	40%	35%

Intensities in 270° c-plane

0°	2°	4°	6°	8°	10°	12°	14°	16°	18°	20°	22°	24°	26°	28°	30°	32°	34°	36°	38°
1746	1736	1707	1657	1587	1501	1403	1294	1177	1055	930	808	690	579	479	390	312	243	184	136
100%	99%	98%	95%	91%	86%	80%	74%	67%	60%	53%	46%	40%	33%	27%	22%	18%	14%	11%	8%

Beam angle 50%	Field angle 10%	Cutoff angle 2,5%	Intensity ratio in 120° cone	Intensity ratio in 90° cone
51.8°	85.4°	101.7°	99.5%	94.4%