

alphabet

PROJECT INFORMATION		
JOB NAME		TYPE
ORDERING CODE		

BETA 4

4" Square Standard White



60° - 80° BEAM (Note: Specifications are subject to change without notice)		
14mm COB PERFORMANCE DATA		
LED LIGHT ENGINE	NOMINAL DELIVERED LUMENS	SYSTEM WATTAGE
10LM	1120LM @30K/80CRI	11W
15LM	1350LM @30K/80CRI	13W
20LM	1870LM @30K/80CRI	17W
25LM	2160LM @30K/80CRI	21W
30LM	2900LM @30K/80CRI	29W
35LM	3590LM @30K/80CRI	37W
10LM	950LM @30K/90CRI	11W
15LM	1150LM @30K/90CRI	13W
20LM	1590LM @30K/90CRI	17W
25LM	1840LM @30K/90CRI	21W
30LM	2470LM @30K/90CRI	29W
35LM	3050LM @30K/90CRI	37W
Notes	Delivered lumens based on WH80, 3000K (see page 2)	



CASAMBI

FEATURES

- Seamless extrusion with powder coated finish for clean aesthetics
- Thermally optimized for longevity
- 60° - 80° beam spread
- UGR < 19
- Micro slim canopy option at 1/4"-3/8" depth plus 1/2" diameter stem.
- Multiple mounting, glare control options, trims and finishes available

DIMMING AND CONTROLS

- Flicker free 0-10V dimming to 1%
- Leading & trailing edge (Triac/ELV) dimming to 1%
- Lutron Hi-lume 2-Wire Eco System dimming to 1%
- Casambi bluetooth dimming to 1%

CONSTRUCTION

- Extruded aluminum housing
- Lexan™ (PC) Optimal connectivity for wireless control signal
- Machined aluminum canopy
- SVT pendant cord

LED

- 90 CRI: SDCM = 2-step MacAdam Ellipse, Lumen Maintenance: L₇₀ > 66,000 hrs
- 80 CRI: SDCM = 2-step MacAdam Ellipse, Lumen Maintenance: L₇₀ > 66,000 hrs

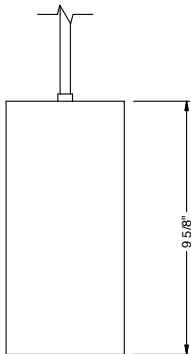
LISTING

- ULus Listed to UL1598 & UL2108; cUL Listed to CSA C22.2 #250.0
- Suitable for dry and damp locations
- 5 Year Limited warranty

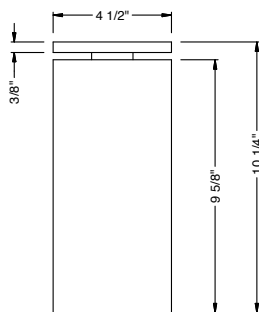
ELECTRICAL

- 120V-277V, 120 only Triac / ELV
- Power factor ≥ 0.9
- 2kV driver input surge protection
- Remote emergency test switch
- 7 W, 10W (T20 CEC) and 12W EM 90min battery

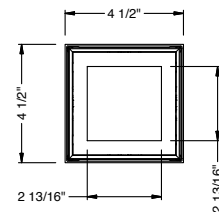
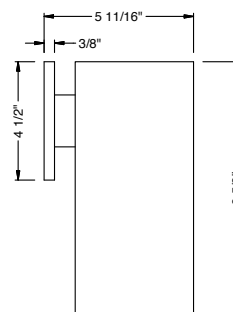
PENDANT



SURFACE MOUNT



WALL MOUNT



alphabet

PROJECT INFORMATION		
JOB NAME		TYPE
ORDERING CODE		

ORDERING CODE		
SERIES	BETA	BETA
TYPE	4Q	4" square
LED	SW	standard white
DELIVERED LUMENS	10LM	1120 lm
	15LM	1350 lm
	20LM	1870 lm
	25LM	2160 lm
	30LM	2900 lm
	35LM ¹	3590 lm
Standard Configuration: 3000K 80CRI WH80 Calculated Delivered Lumens = [Delivered Lumen Value] x [CCT Multiplier] x [Reflector Multiplier]		
CCT	27K	2700K
	30K	3000K
	35K	3500K
	40K	4000K
CRI	80	80 CRI
	90	90 CRI
OPTIC & LM MULTIPLIER SEE PAGE 3	HE60	60° high efficiency diffused lens (0.96)
	HE70	70° high efficiency diffused lens (0.88)
	HE80	80° high efficiency diffused lens (0.95)
	D65	65° diffused with clear lens (0.96)
	WH80	80° brilliant white with clear lens (1.00)
BEZEL LENS SEE PAGE 3	NL ²	no lens
FINISH SEE PAGE 2	BK	black
	WH	white
	MC	matte chrome
BEZEL COLOR SEE PAGE 2	BK	black (0.98)
	WH	white (1.00)
	MC	matte chrome (0.99)
	BZ	bronze (0.98)
	WT	wheat (0.99)

ORDERING CODE		
MOUNTING OPTIONS SEE PAGE 4	W	wall mount
	S	surface mount
	P ³	pendant, 108" flexible cord
	RP	rigid pendant 4' stem with swivel stem/canopy
	RP5	rigid pendant 5' stem with swivel stem/canopy
	RP6	rigid pendant 6' stem with swivel stem/canopy
	RP8	rigid pendant 8' stem with swivel stem/canopy
	RP10	rigid pendant 10' stem with swivel stem/canopy
	RPF2	rigid pendant 2' with fixed stem/canopy
	RPF3	rigid pendant 3' with fixed stem/canopy
RPF4	rigid pendant 4' with fixed stem/canopy	
RPF6	rigid pendant 6' with fixed stem/canopy	
JCOV-XX ⁴	conduit junction box cover with knockouts, complete XX code with desired pendant mount	
VOLTAGE	120	120V
	UNV	120V-277V
DIMMING	DIM10	0-10V dimming to 1%
	LUTP ⁵	Lutron Hi-lume Premier Ecosystem dimming to 0.1%, Soft-on & Fade-to-Black
	ELV1 ⁶	leading & trailing edge (Triac/ELV) dimming to 1%
	CAS	Casambi Bluetooth control with flicker free 1% dimming
ELECTRICAL OPTIONS	EM7	remote emergency battery backup, 90 minutes at 7 watts to LED
	EM12	remote emergency battery backup, 90 minutes at 12 watts to LED
	EM10CA20	remote emergency battery backup, 90 minutes at 10W to LED, CA title 20

YOUR COMPLETED ORDERING CODE	
Follow the steps to specify your fixture, example:	
BETA - 4Q - SW - 25LM - 35K - 80 - HE80 - WH - WH - P - UNV - DIM10 - EM7	

NOTES

- 35LM not offered in 90 CRI.
- NL option available for D65/WH80.
- Canopy type: Slim square - ELV1/CAS, Deep round - DIM10/LUTP.
- JCOV offered with round canopy. Not available in RP.
- LUTP available in 15LM/20LM.
- ELV1 available in 120V.

*Slim canopy with rigid stem connection shall be used in jurisdictions that DO NOT require light fixtures to freely swing in lateral directions, complying with local and national building codes.

*RP mounting with swivel is recommended to be installed on a 4in square or 4in deep regress 2-1/8" octagonal junction box.

BEZEL OPTIONS

BEZEL COLORS



alphabet

PROJECT INFORMATION		
JOB NAME		TYPE
ORDERING CODE		

PHOTOMETRIC DATA

20LM		
	80CRI	90CRI
2700K	0.96	0.81
3000K	1	0.85
3500K	1.03	0.88
4000K	1.06	0.91
FC Formula = CBCP / Distance ²		

D65 69° DIFFUSED WITH CLEAR LENS	
Throw Distance (ft)	Beam Diameter (ft)
6	4.4
8	5.8
10	7.2
12	8.6
14	10.0
Illuminance at Center (fc)	
6	8.3
8	11
10	13.8
12	16.6
14	19.3
WATTS: 17.2	LPW: 104.2
LUMENS: 1794	CCT: 3000K
INTENSITY	
DEGREE	CANDELA
0	1590
5	1569
15	1400
25	1119
35	775
45	174

HE60 67° HIGH EFFICIENCY DIFFUSED LENS	
Throw Distance (ft)	Beam Diameter (ft)
6	3.8
8	5.1
10	6.4
12	7.7
14	9.0
Illuminance at Center (fc)	
6	8
8	10.7
10	13.4
12	16
14	18.7
WATTS: 17.2	LPW: 103.5
LUMENS: 1782	CCT: 3000K
INTENSITY	
DEGREE	CANDELA
0	1384
5	1362
15	1200
25	946
35	653
45	327

HE80 85° HIGH EFFICIENCY DIFFUSED LENS	
Throw Distance (ft)	Beam Diameter (ft)
6	2.7
8	3.6
10	4.5
12	5.4
14	6.3
Illuminance at Center (fc)	
6	11
8	14.6
10	18.3
12	22
14	25.6
WATTS: 17.2	LPW: 102.5
LUMENS: 1764	CCT: 3000K
INTENSITY	
DEGREE	CANDELA
0	956
5	950
15	903
25	809
35	656
45	408

WH80 80° BRILLIANT WHITE WITH CLEAR LENS	
Throw Distance (ft)	Beam Diameter (ft)
6	3.0
8	4.0
10	5.0
12	6.0
14	7.0
Illuminance at Center (fc)	
6	10.1
8	13.5
10	16.9
12	20.2
14	23.6
WATTS: 17.2	LPW: 108.4
LUMENS: 1866	CCT: 3000K
INTENSITY	
DEGREE	CANDELA
0	1085
5	1082
15	1050
25	977
35	843
45	312

35LM		
	80CRI	90CRI
2700K	0.96	0.81
3000K	1	0.85
3500K	1.03	0.88
4000K	1.06	0.91
FC Formula = CBCP / Distance ²		

D65 69° DIFFUSED WITH CLEAR LENS	
Throw Distance (ft)	Beam Diameter (ft)
6	8.5
8	11.3
10	14.1
12	16.9
14	19.7
Illuminance at Center (fc)	
6	8.3
8	11
10	13.8
12	16.6
14	19.3
WATTS: 37.1	LPW: 92.9
LUMENS: 3448	CCT: 3000K
INTENSITY	
DEGREE	CANDELA
0	3057
5	3015
15	2691
25	2151
35	1489
45	335

HE60 67° HIGH EFFICIENCY DIFFUSED LENS	
Throw Distance (ft)	Beam Diameter (ft)
6	7.4
8	9.9
10	12.4
12	14.9
14	17.4
Illuminance at Center (fc)	
6	8
8	10.7
10	13.4
12	16
14	18.7
WATTS: 37.1	LPW: 92.3
LUMENS: 3426	CCT: 3000K
INTENSITY	
DEGREE	CANDELA
0	2661
5	2619
15	2307
25	1818
35	1255
45	628

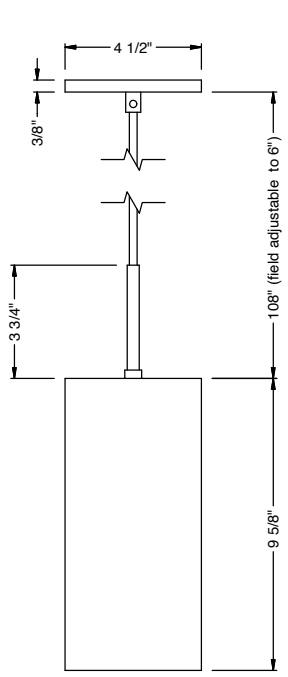
HE80 85° HIGH EFFICIENCY DIFFUSED LENS	
Throw Distance (ft)	Beam Diameter (ft)
6	5.1
8	6.8
10	8.5
12	10.2
14	11.9
Illuminance at Center (fc)	
6	11
8	14.6
10	18.3
12	22
14	25.6
WATTS: 37.1	LPW: 91.4
LUMENS: 3391	CCT: 3000K
INTENSITY	
DEGREE	CANDELA
0	1838
5	1827
15	1736
25	1554
35	1261
45	785

WH80 80° BRILLIANT WHITE WITH CLEAR LENS	
Throw Distance (ft)	Beam Diameter (ft)
6	5.8
8	7.7
10	9.6
12	11.5
14	13.4
Illuminance at Center (fc)	
6	10.1
8	13.5
10	16.9
12	20.2
14	23.6
WATTS: 37.1	LPW: 96.7
LUMENS: 3587	CCT: 3000K
INTENSITY	
DEGREE	CANDELA
0	2086
5	2079
15	2019
25	1877
35	1620
45	600

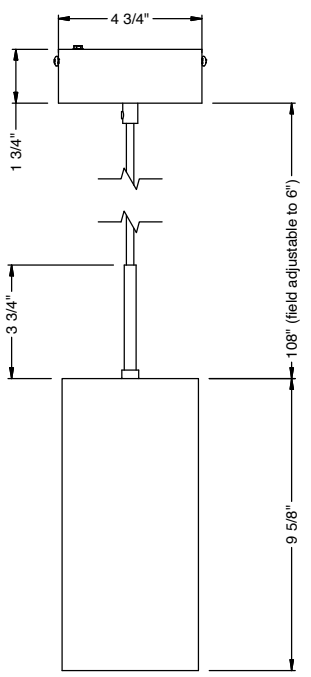
alphabet

PROJECT INFORMATION		
JOB NAME		TYPE
ORDERING CODE		

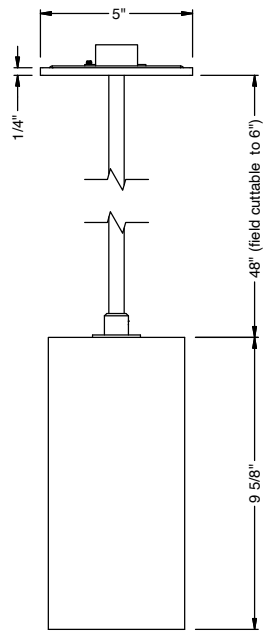
MOUNTING OPTIONS



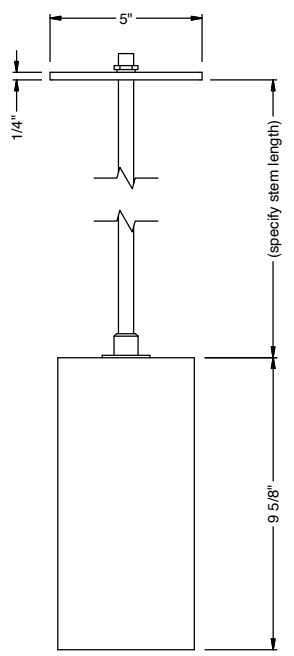
**PENDANT
ELV1 / CAS**



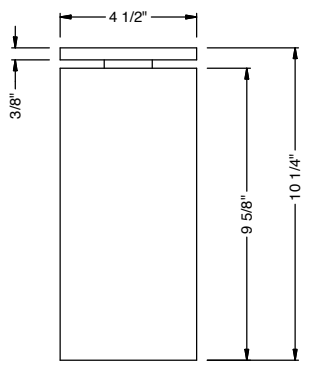
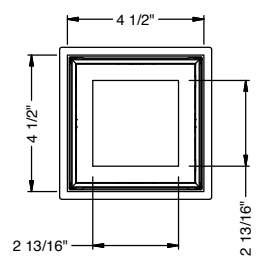
**PENDANT
ROUND CANOP
DIM10 / LUTP**



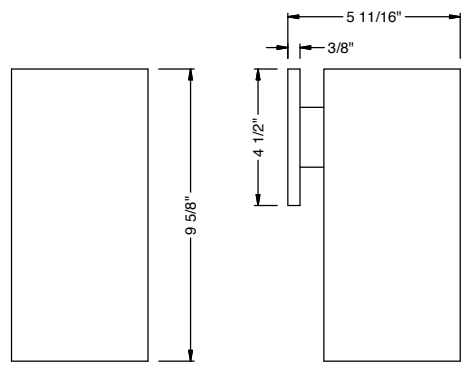
**RP SWIVEL
DIM10 / ELV1 / LUTP**



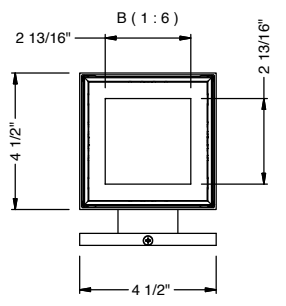
**RP FIXED
DIM10 / ELV1 / LUTP**



**SURFACE MOUNT
DIM10 / ELV1 / LUTP**



**WALL MOUNT
DIM10 / ELV1 / LUTP**



PROJECT INFORMATION		
JOB NAME		TYPE
ORDERING CODE		

BATTERY OPTIONS

EMERGENCY BATTERY

IOTA's ILB battery backups are UL Listed LED emergency drivers that allow the same LED fixture to be used for both normal and emergency operation. In the event of a power failure, the ILB switches to the emergency mode and operates the existing fixture for 90 minutes. The unit contains a battery, charger, and converter circuit in a single can. The constant power design of the ILB maintains the output wattage to the LED array even as the system voltage diminishes. UL 924 Listed for U.S. and Canada. UL 1310 Certified, output class 2 compliant. Includes single-piece TBTS test switch and charge indicator accessory kit. For use with switched and unswitched fixtures, and includes two-wire universal AC input. Meets or exceeds all National Electric Code and Life Safety Code Emergency Lighting requirements. Rated for use in plenum, damp location, recessed type IC, and enclosed and gasketed luminaires.

REMOTE TEST SWITCH

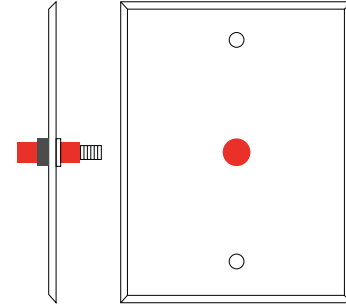
The remote test switch may be mounted adjacent to the LED Fixture by others.

EMERGENCY BATTERY ACCESS

Above ceiling access is recommended for ease of service.

REMOTE LOCATION

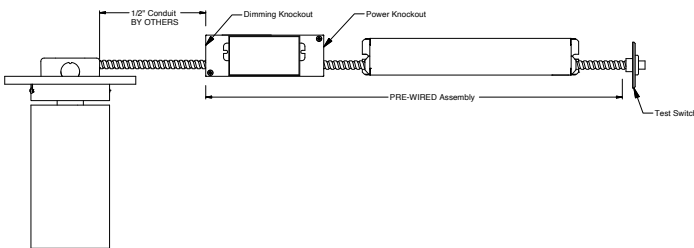
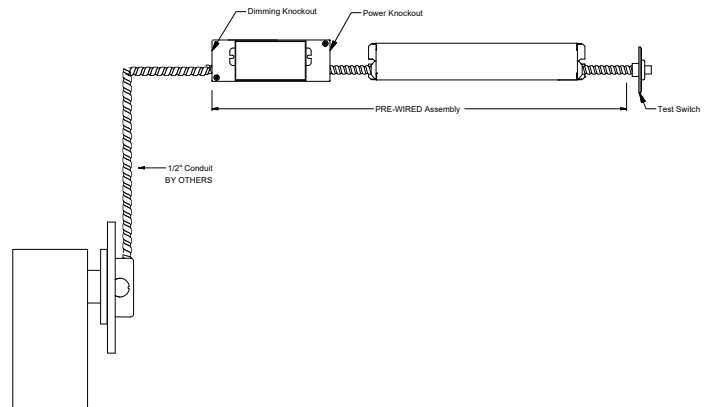
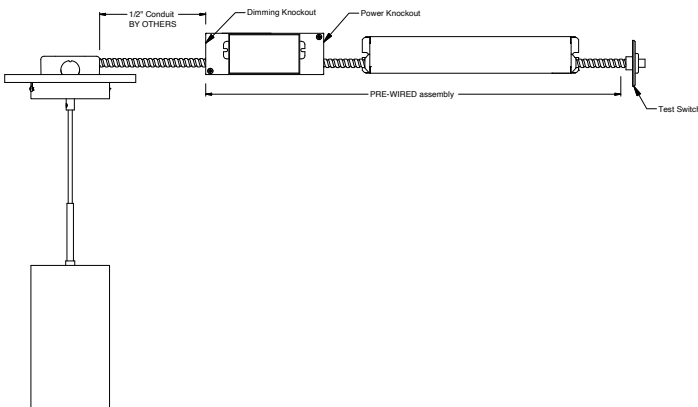
Maximum remote mounting distance of the emergency driver shall be 50 feet. Remote location wiring provided by others. Follow all local and national electric/building codes.



Remote Test Switch

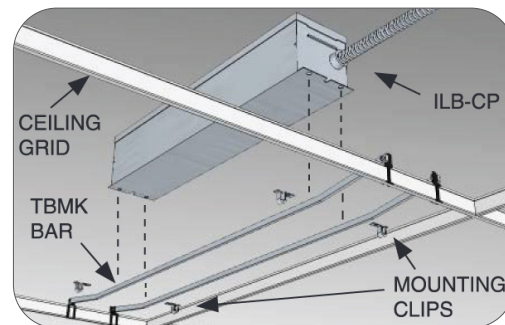
EM MODE OUTPUT (DELIVERED LUMENS)			
LUMEN ORDERING CODE	EM7	EM10	EM12
ALL OPTIONS (10LM TO 35LM)	800LM	1120LM	1350LM
Notes: Based on 30K, 80CRI			

REMOTE BATTERY



Accessory

76066 Optional T-Grid Mounting Kit¹



1. Can be used with any of the Emergency Battery Backups. Must be ordered as a separate line item.