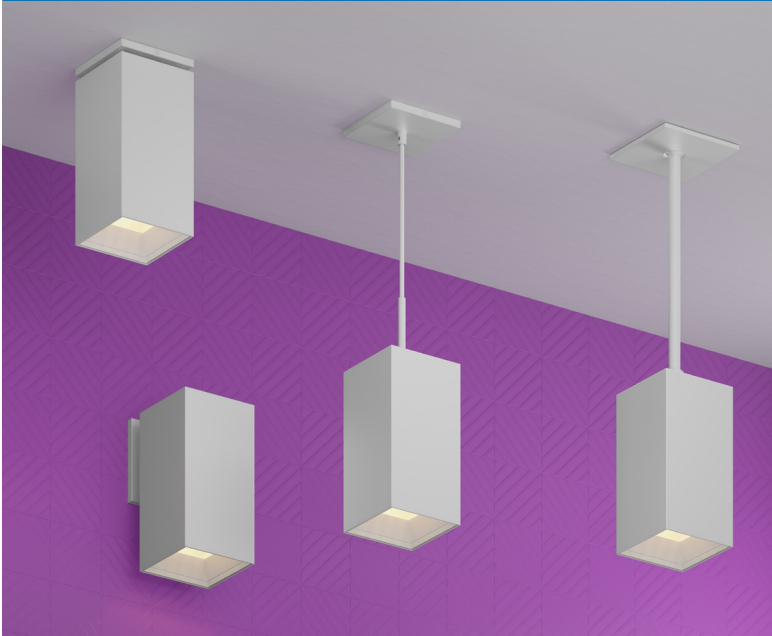


alphabet

PROJECT INFORMATION			
JOB NAME		TYPE	
ORDERING CODE			

BETA4

4" Square RGBW



35° - 50° BEAM		
(Note: Specifications are subject to change without notice)		
22mm COLOR TUNING MODULE PERFORMANCE DATA		
LED LIGHT ENGINE	NOMINAL DELIVERED LUMENS	SYSTEM WATTAGE
10LM	1020LM @30K/90CRI	25W
Notes	Delivered lumens based 25D, (see page 2)	

CASAMBI

FEATURES

- RGB (W) five white CCT options available
- Seamless extrusion with powder coated finish for clean aesthetics
- Thermally optimized for longevity
- 25° - 50° beam spread
- Micro slim canopy option at 1/4"-3/8" depth plus 1/2" diameter stem
- Multiple mounting, glare control options, trims and finishes available

DIMMING AND CONTROLS

- DMX512-A-RDM control, 8 bit channel control with 0-255 grey bit scale
- DMX connection by wire leads
- BLE mesh network control, profile allows color mixing on Casambi app

CONSTRUCTION

- Extruded aluminum housing
- Lexan™ (PC) Optimal connectivity for wireless control signal
- Impact and chemical resistant at the highest level
- SVT pendant cord

LED

- Lumiled LUXEON C Color Line • SDCM = 2-step MacAdam Ellipse, Duv +/- 0.002, Lumen Maintenance: L₇₀ > 50,000 hrs

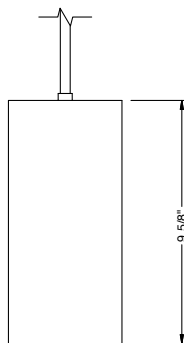
LISTING

- ULus Listed to UL1598 & UL2108; cUL Listed to CSA C22.2 #250.0
- Suitable for dry and damp locations
- 5 Year Limited warranty

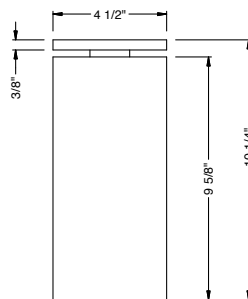
ELECTRICAL

- 120V-277V
- Power factory ≥ 0.9
- Max ambient temperature 50C
- Battery Backup not offered. Emergency Generator/Inverter/Controls-Override Device supplied by others

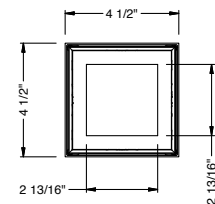
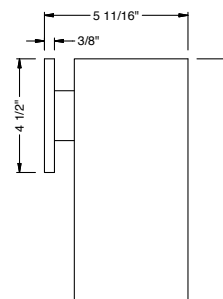
PENDANT



SURFACE MOUNT



WALL MOUNT



alphabet

PROJECT INFORMATION		
JOB NAME		TYPE
ORDERING CODE		

ORDERING CODE		
SERIES	BETA	BETA
TYPE	4Q	4" square
LED	RGBW	4 channel color module
DELIVERED LUMENS	10LM	1020 lm
	Standard Configuration: 25D CL Calculated Delivered Lumens = [Delivered Lumen Value] x [Optic Multiplier] x [Lens Multiplier]	
CCT	27K	RGBW with white at 2700K
	30K	RGBW with white at 3000K
	35K	RGBW with white at 3500K
	43K	RGBW with white at 4300K
	65K	RGBW with white at 6500K
CRI	90	90 CRI
OPTIC & LM MULTIPLIER SEE PAGE 3	25D	25 degrees (1.00)
	30D	30 degrees (0.98)
	35D	35 degrees (0.98)
	50D	50 degrees (0.92)
RECESSED LENS SEE PAGE 3	NL	no lens (1.00)
	CL	clear lens (0.99)
FINISH SEE PAGE 3	BK	black
	WH	white
	MC	matte chrome
BEZEL COLOR SEE PAGE 3	BK	black
	WH	white
	MC	matte chrome

ORDERING CODE		
MOUNTING OPTIONS SEE PAGE 5	W	wall mount
	S	surface mount
	JCOV-S	conduit junction box cover with knockouts, surface
	P¹	pendant, 108" flexible cord
	RP	rigid pendant 4' stem with swivel stem/canopy
	RP5	rigid pendant 5' stem with swivel stem/canopy
	RP6	rigid pendant 6' stem with swivel stem/canopy
	RP8	rigid pendant 8' stem with swivel stem/canopy
	RP10	rigid pendant 10' stem with swivel stem/canopy
	RPF2	rigid pendant 2' with fixed stem/canopy
	RPF3	rigid pendant 3' with fixed stem/canopy
RPF4	rigid pendant 4' with fixed stem/canopy	
RPF6	rigid pendant 6' with fixed stem/canopy	
JCOV-XX²	conduit junction box cover with knockouts, complete XX code with desired pendant mount	
VOLTAGE	UNV	120V-277V
DIMMING	DMX	DMX control, dimmable to 1% + RDM
	CAS	Casambi Bluetooth control with flicker free 1% dimming

YOUR COMPLETED ORDERING CODE	
Follow the steps to specify your fixture, example:	
BETA - 4Q - RGBW - 10LM - 30K - 90 - 35D - CL - WH - WH - RP - UNV - DMX	

NOTES

- Pendant mount only offered in CAS dimming option.
- JCOV available with RPF mounting.

*Slim canopy with rigid stem connection shall be used in jurisdictions that DO NOT require light fixtures to freely swing in lateral directions, complying with local and national building codes.

alphabet

PROJECT INFORMATION		
JOB NAME		TYPE
ORDERING CODE		

BEZEL OPTIONS

BEZEL COLORS



OPTICAL OPTIONS

- UGR calculation based on CIE 117-1995; room size: 4H X 8H, reflectance: 70/50/20;
- UGR calculation based on 15LM fixtures.



OPTIC	BEAM ANGLE	UGR
15C	16.2	171
15C	16.2	171
15C	16.2	171
15C	16.2	171
15C	16.2	171



OPTIC	BEAM ANGLE	UGR
40D	42.6	21.9
40D	42.6	21.9
40D	42.6	21.9
40D	42.6	21.9

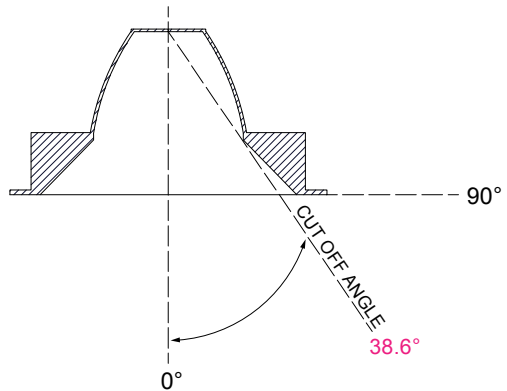
GLARE CONTROL

CUT-OFF ANGLE

Visual comfort is achieved with a lower cut-off angle due to improved glare control. The smaller the cut-off angle, the easier it is on the eye.

Alphabet downlights have been thoughtfully engineered to eliminate glare while still delivering functional illumination.

- Cutoff angle of CL is 38.6 degrees;



alphabet

PROJECT INFORMATION		
JOB NAME		TYPE
ORDERING CODE		

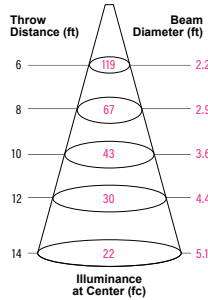
PHOTOMETRIC DATA

10LM CCT MULTIPLIERS

	80CRI	90CRI
2700K	0.96	0.81
3000K	1	0.85
3500K	1.03	0.88
4000K	1.06	0.91

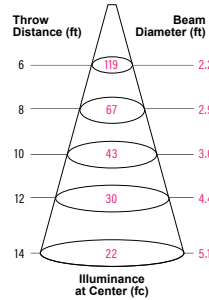
FC Formula = CBCP / Distance²

20° REFLECTOR WITH CLEAR LENS



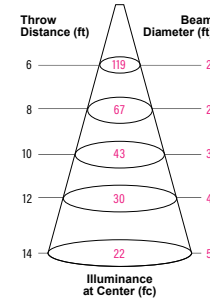
WATTS: 8.6	LPW: 109.6
LUMENS: 942	CCT: 3000K
INTENSITY	
DEGREE	CANDELA
0	4291
5	3694
15	1004
25	380
35	242
45	7

20° REFLECTOR WITH CLEAR LENS



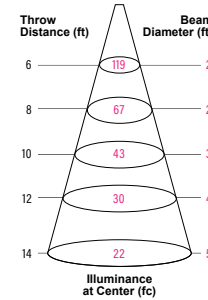
WATTS: 8.6	LPW: 109.6
LUMENS: 942	CCT: 3000K
INTENSITY	
DEGREE	CANDELA
0	4291
5	3694
15	1004
25	380
35	242
45	7

20° REFLECTOR WITH CLEAR LENS



WATTS: 8.6	LPW: 109.6
LUMENS: 942	CCT: 3000K
INTENSITY	
DEGREE	CANDELA
0	4291
5	3694
15	1004
25	380
35	242
45	7

20° REFLECTOR WITH CLEAR LENS



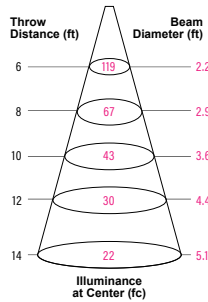
WATTS: 8.6	LPW: 109.6
LUMENS: 942	CCT: 3000K
INTENSITY	
DEGREE	CANDELA
0	4291
5	3694
15	1004
25	380
35	242
45	7

20LM CCT MULTIPLIERS

	80CRI	90CRI
2700K	0.96	0.81
3000K	1	0.85
3500K	1.03	0.88
4000K	1.06	0.91

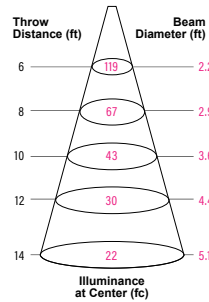
FC Formula = CBCP / Distance²

20° REFLECTOR WITH CLEAR LENS



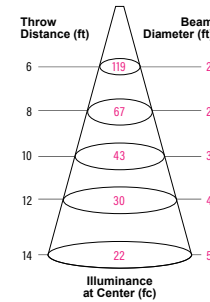
WATTS: 8.6	LPW: 109.6
LUMENS: 942	CCT: 3000K
INTENSITY	
DEGREE	CANDELA
0	4291
5	3694
15	1004
25	380
35	242
45	7

20° REFLECTOR WITH CLEAR LENS



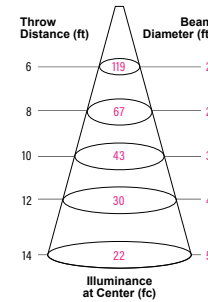
WATTS: 8.6	LPW: 109.6
LUMENS: 942	CCT: 3000K
INTENSITY	
DEGREE	CANDELA
0	4291
5	3694
15	1004
25	380
35	242
45	7

20° REFLECTOR WITH CLEAR LENS



WATTS: 8.6	LPW: 109.6
LUMENS: 942	CCT: 3000K
INTENSITY	
DEGREE	CANDELA
0	4291
5	3694
15	1004
25	380
35	242
45	7

20° REFLECTOR WITH CLEAR LENS

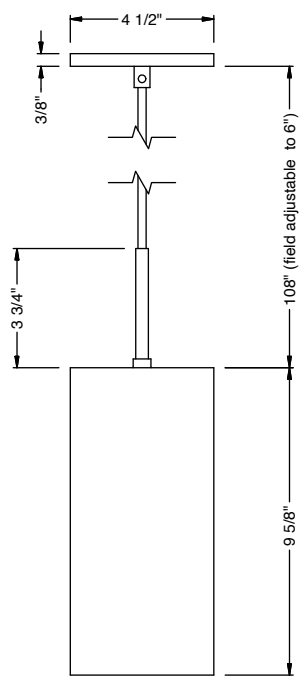


WATTS: 8.6	LPW: 109.6
LUMENS: 942	CCT: 3000K
INTENSITY	
DEGREE	CANDELA
0	4291
5	3694
15	1004
25	380
35	242
45	7

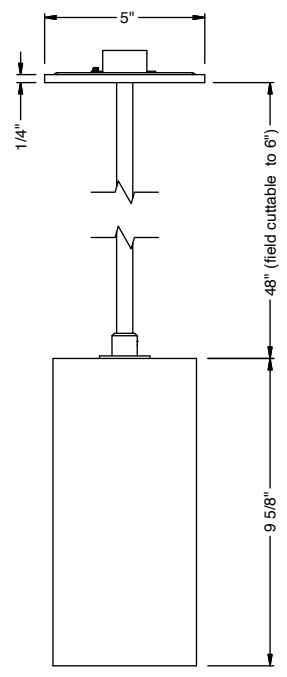
alphabet

PROJECT INFORMATION		
JOB NAME		TYPE
ORDERING CODE		

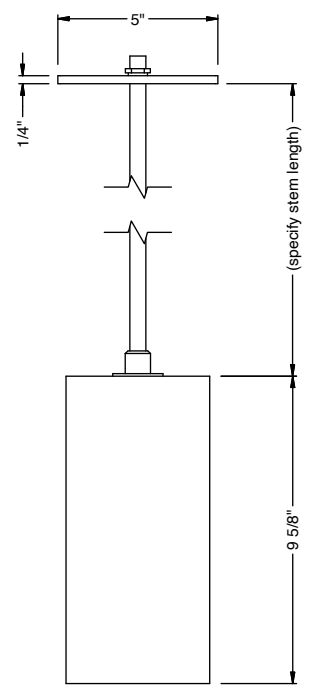
MOUNTING OPTIONS



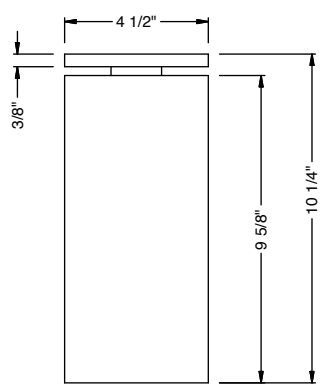
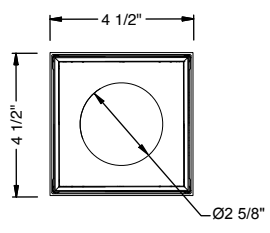
PENDANT
DMX



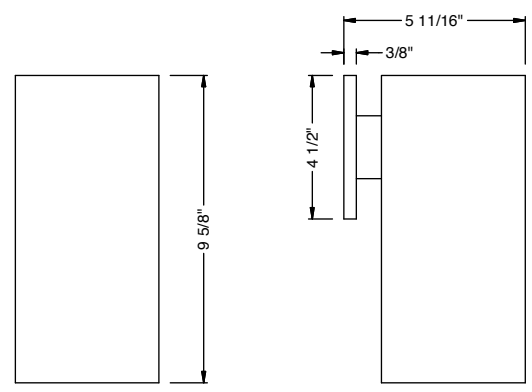
RP SWIVEL
DMX / CAS



RP FIXED
DMX / CAS



SURFACE MOUNT
DMX / CAS



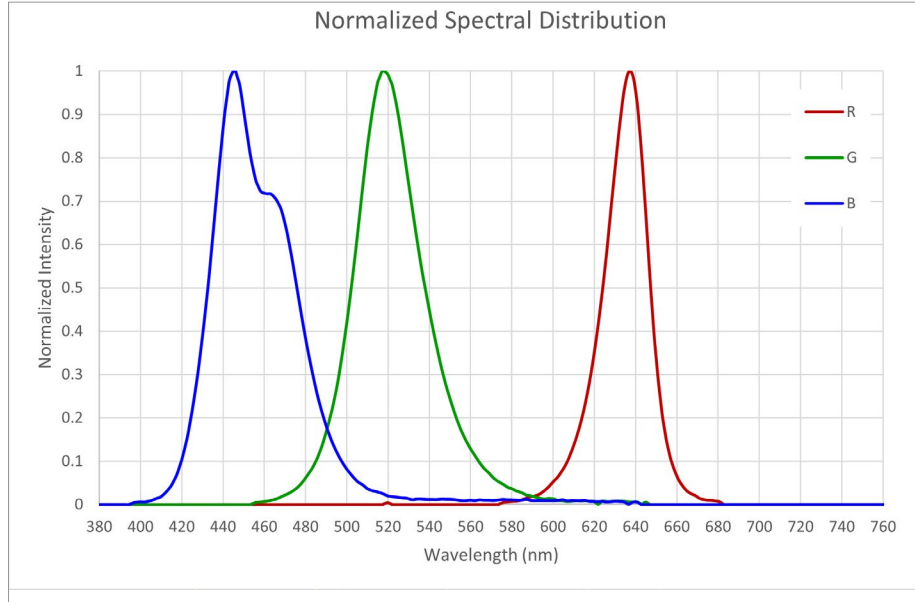
WALL MOUNT
DMX / CAS

PROJECT INFORMATION		
JOB NAME		TYPE
ORDERING CODE		

RGBW DATA

DOMINANT WAVELENGTH	
	MEASURED
R	623.9
G	524.2
B	461.9

RGB SPECTRAL PLOT



COLOR GAMUT PLOT

