

Light efficiency:

75 Lumen/Watt

Light quality:

CRI: 83.3

Color temperature:

2906 K

Output: 1529 lm

Peak: 810 cd

Power: 20.3 W

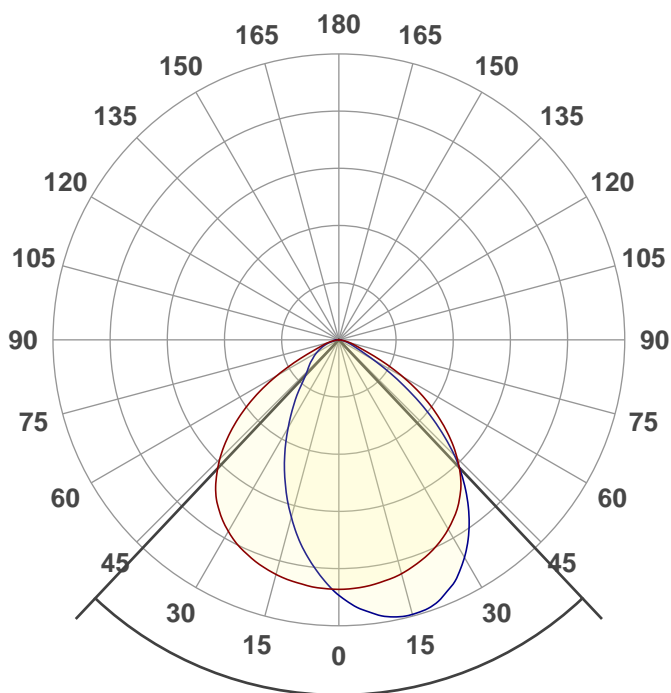
PF: 0.96



NU4-QW-XTM19-20LM-30K-83-WW-120-DIM10-NC-WH-WH

Date and time:

1/30/2021 9:25:46 AM



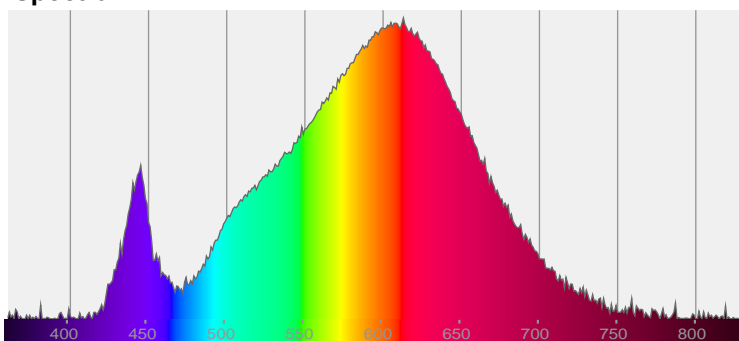
Beam angle

86.6°

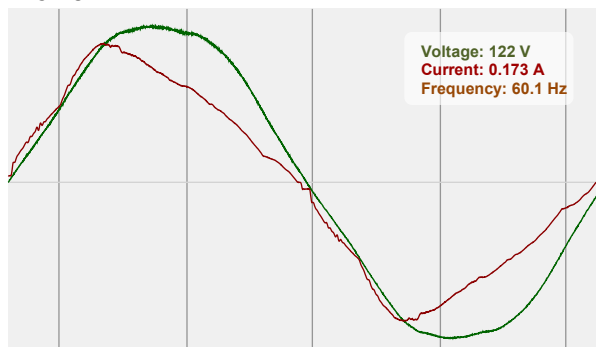


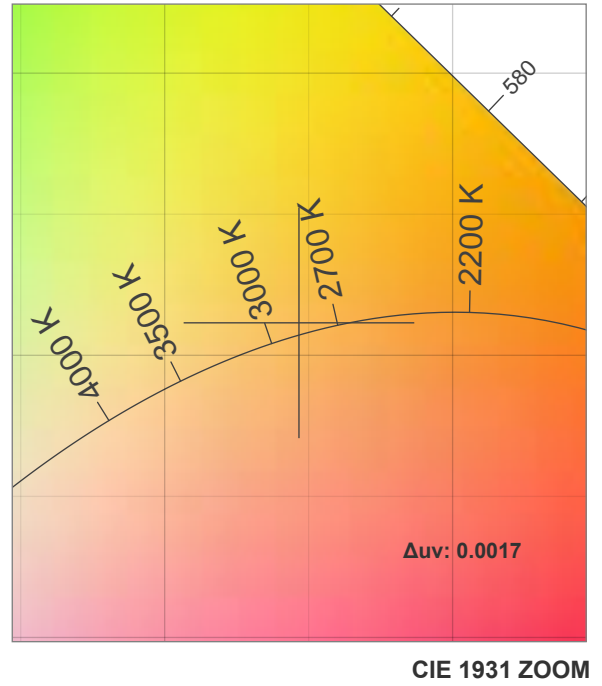
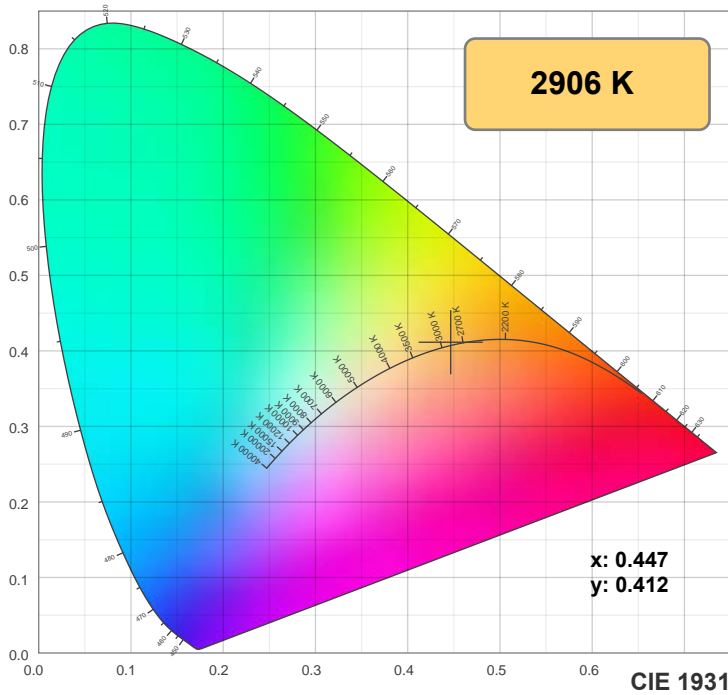
CIE 1931
x: 0.447
y: 0.412

Spectra

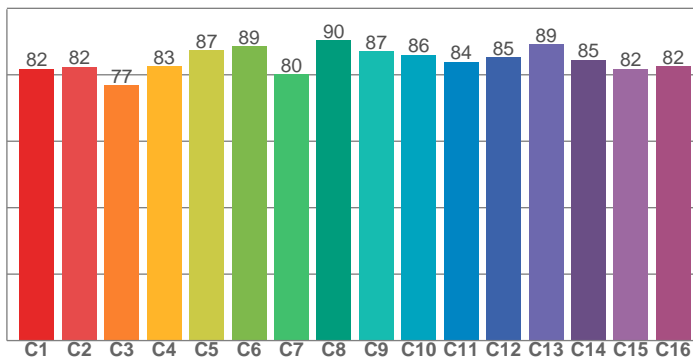


Power

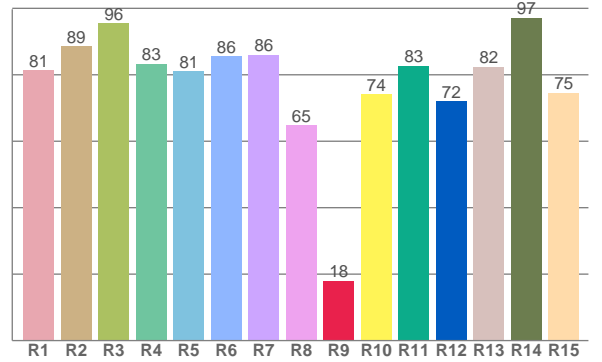




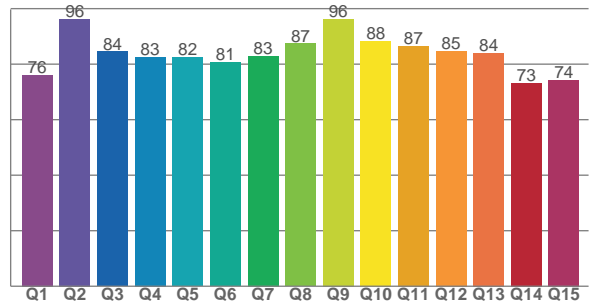
TM30: 84.2



CRI: 83.3 (R1-R8)



CQS: 82.6



CRI R values, only R1-R8 are used to calculate final CRI value

R1	R2	R3	R4	R5	R6	R7	R8	R9	R10	R11	R12	R13	R14	R15
81.3	88.5	95.6	83.3	81.1	85.7	86.0	64.8	18.1	74.2	82.7	72.0	82.4	97.2	74.5

TM30 C values, 16 binned values out of total of 99 C values

C1	C2	C3	C4	C5	C6	C7	C8	C9	C10	C11	C12	C13	C14	C15	C16
81.8	82.3	76.8	82.6	87.3	88.6	80.1	90.3	87.0	86.0	83.8	85.3	89.2	84.5	81.7	82.5

CQS Q values

Q1	Q2	Q3	Q4	Q5	Q6	Q7	Q8	Q9	Q10	Q11	Q12	Q13	Q14	Q15
76.1	96.3	84.5	82.5	82.5	80.7	83.0	87.4	96.2	88.3	86.5	84.8	84.1	73.3	74.2

Color parameters

Color temperature	Color rendering index	Red component	Color fidelity	Color gamut	Color quality scale	Color coordinate cie 1931	Color coordinate cie 1931	Color coordinate	Color coordinate	Color deviation from black body
CCT	CRI	CRI R9	TM30 Rf	TM30 Rg	CQS	x	y	u	v	Δuv
2906 K	83.3	18.1	84.2	98.8	82.6	0.447	0.412	0.254	0.350	0.0017

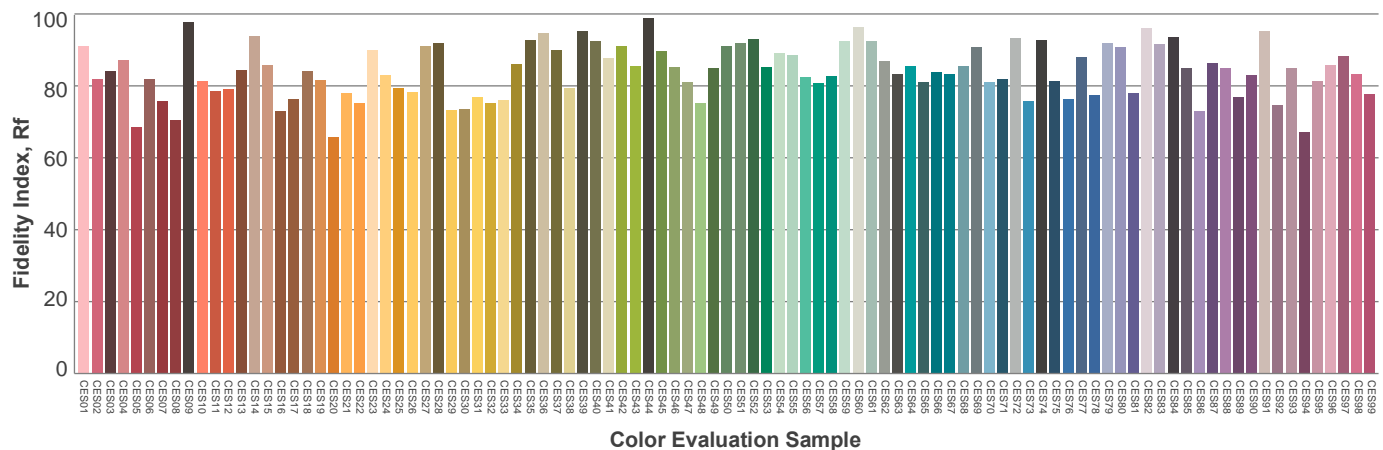
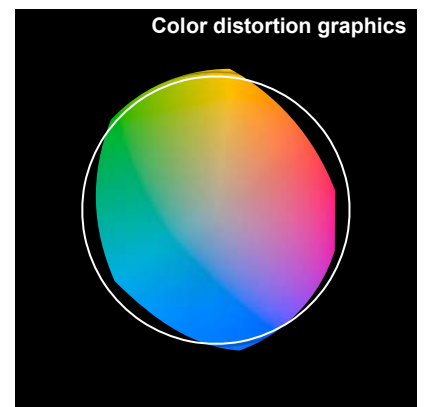
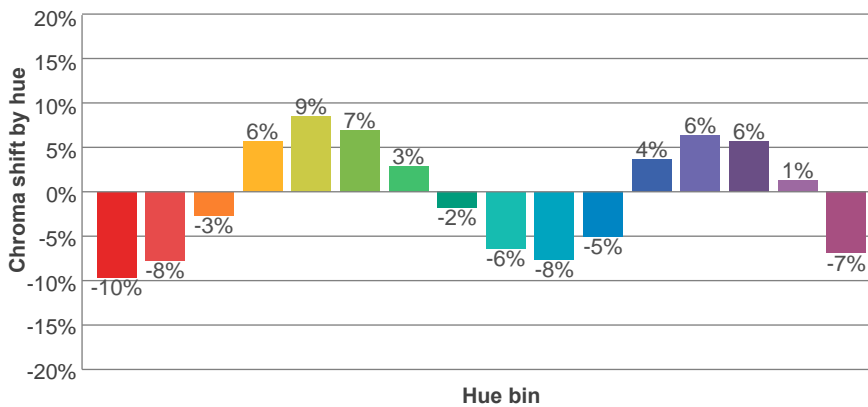
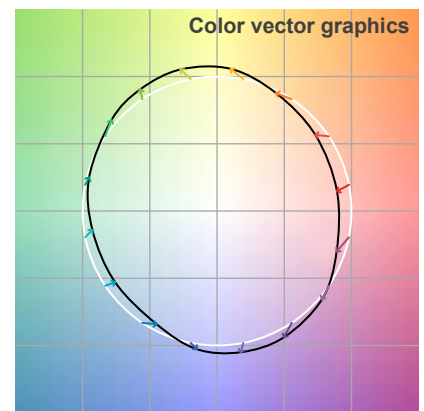
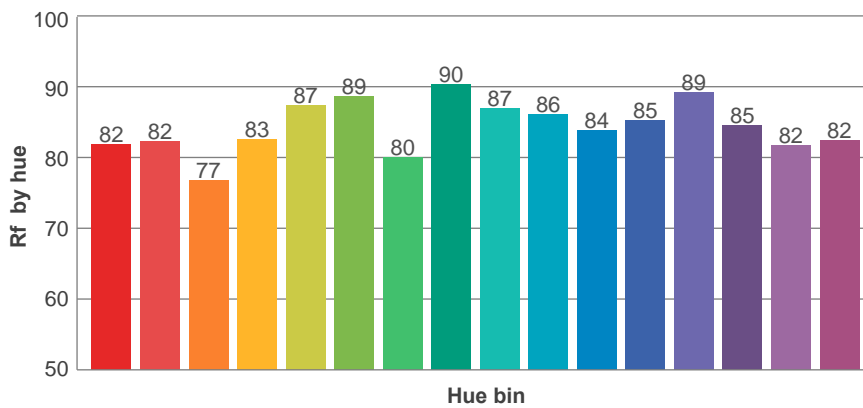
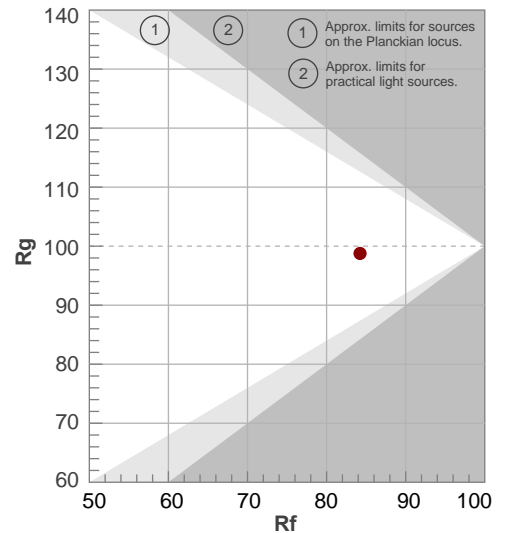
Rf 84.2

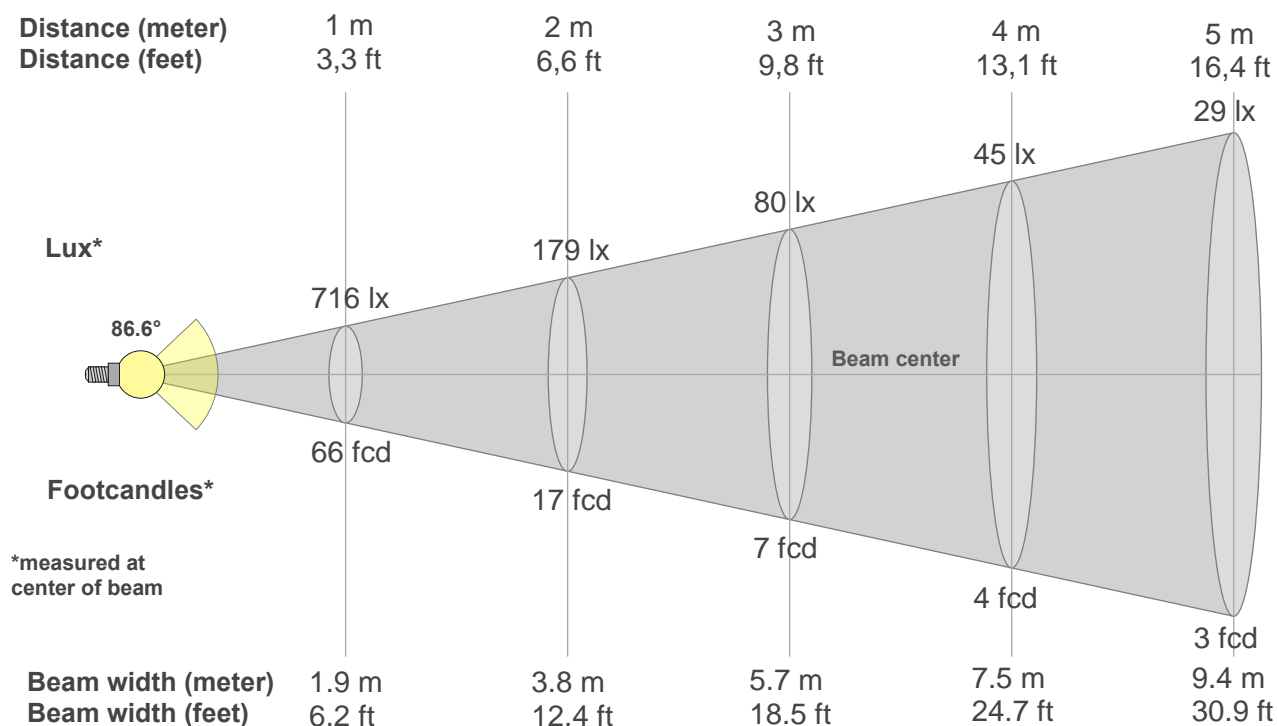
Fidelity index Rf

Rg 98.8

Gamut index Rg

Hue Bin	R _f	Graphic shifts (%)	
		Chroma	Hue
1	82	-10%	-3%
2	82	-8%	6%
3	77	-3%	12%
4	83	6%	11%
5	87	9%	6%
6	89	7%	-3%
7	80	3%	-13%
8	90	-2%	-6%
9	87	-6%	-4%
10	86	-8%	2%
11	84	-5%	9%
12	85	4%	5%
13	89	6%	-3%
14	85	6%	-11%
15	82	1%	-11%
16	82	-7%	-12%





Beam intensities from 1-20m

1m	2m	3m	4m	5m	6m	7m	8m	9m	10m	11m	12m	13m	14m	15m	16m	17m	18m	19m	20m
3.3ft	6.6ft	9.8ft	13.1ft	16.4ft	19.7ft	23ft	26.2ft	29.5ft	32.8ft	36.1ft	39.4ft	42.7ft	45.9ft	49.2ft	52.5ft	55.8ft	59.1ft	62.3ft	65.6ft
716lx	179lx	80lx	45lx	29lx	20lx	15lx	11lx	9lx	7lx	6lx	5lx	4lx	4lx	3lx	3lx	2lx	2lx	2lx	2lx
66.5fcd	16.6fcd	7.4fcd	4.2fcd	2.7fcd	1.8fcd	1.4fcd	1fcd	0.8fcd	0.7fcd	0.5fcd	0.5fcd	0.4fcd	0.3fcd	0.3fcd	0.3fcd	0.2fcd	0.2fcd	0.2fcd	0.2fcd

Intensities in 0° c-plane

0°	5°	10°	15°	20°	25°	30°	35°	40°	45°	50°	55°	60°	65°	70°	75°	80°	85°	90°	95°
716	708	701	690	673	651	623	588	541	476	398	309	211	115	58	34	16	6	0	0
100%	99%	98%	96%	94%	91%	87%	82%	76%	67%	56%	43%	29%	16%	8%	5%	2%	1%	0%	0%

Intensities in 90° c-plane

0°	5°	10°	15°	20°	25°	30°	35°	40°	45°	50°	55°	60°	65°	70°	75°	80°	85°	90°	95°
716	772	800	810	800	768	716	647	563	466	348	222	116	58	35	21	9	3	1	0
100%	108%	112%	113%	112%	107%	100%	90%	79%	65%	49%	31%	16%	8%	5%	3%	1%	0%	0%	0%

Intensities in 180° c-plane

0°	5°	10°	15°	20°	25°	30°	35°	40°	45°	50°	55°	60°	65°	70°	75°	80°	85°	90°	95°
716	709	702	692	677	657	630	594	546	480	399	307	204	108	56	34	16	7	2	0
100%	99%	98%	97%	95%	92%	88%	83%	76%	67%	56%	43%	29%	15%	8%	5%	2%	1%	0%	0%

Intensities in 270° c-plane

0°	5°	10°	15°	20°	25°	30°	35°	40°	45°	50°	55°	60°	65°	70°	75°	80°	85°	90°	95°
716	667	600	523	444	365	289	222	165	129	108	89	73	56	40	23	11	4	0	0
100%	93%	84%	73%	62%	51%	40%	31%	23%	18%	15%	12%	10%	8%	6%	3%	2%	1%	0%	0%

Beam angle 50%	Field angle 10%	Cutoff angle 2,5%	Intensity ratio in 120° cone	Intensity ratio in 90° cone
{B_ANG}°	130.4°	155.1°	90.6%	66.5%