

Light efficiency:

**99 Lumen/Watt**

Light quality:

**CRI: 81.7**

Color temperature:

**3010 K**

**Output: 3183 lm**

**Peak: 1662 cd**

**Power: 32.3 W**

**PF: 0.98**

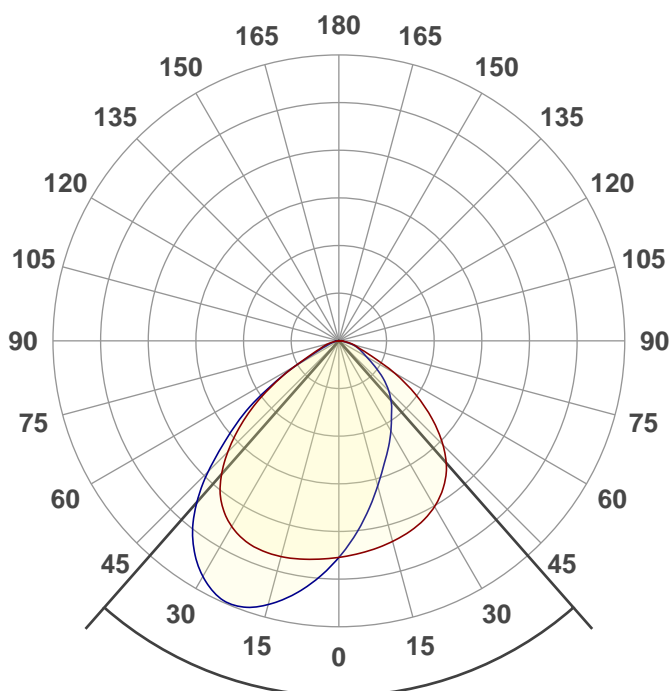


Product name:

**NU4-QW-SW-40LM-30K-80-WW-120-DIM10-NC-WH-WH**

Date and time:

**6/8/2019 9:14:49 AM**



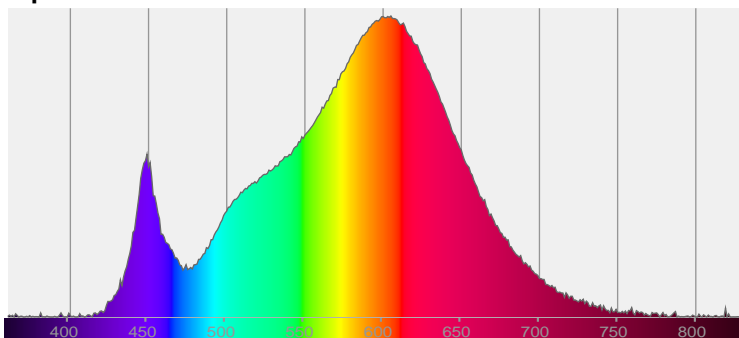
Beam angle

**82.7°**

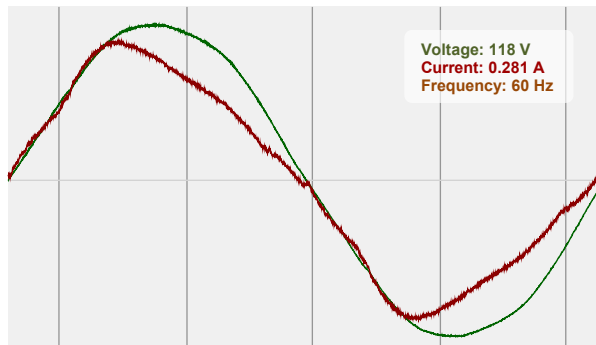


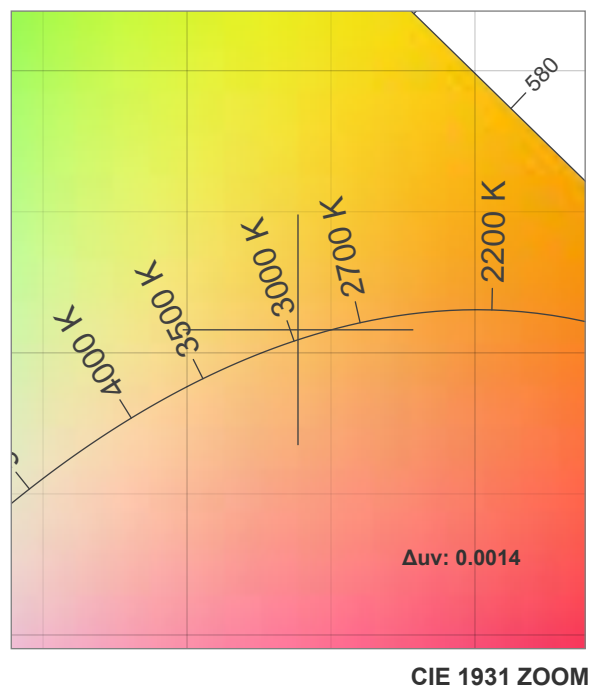
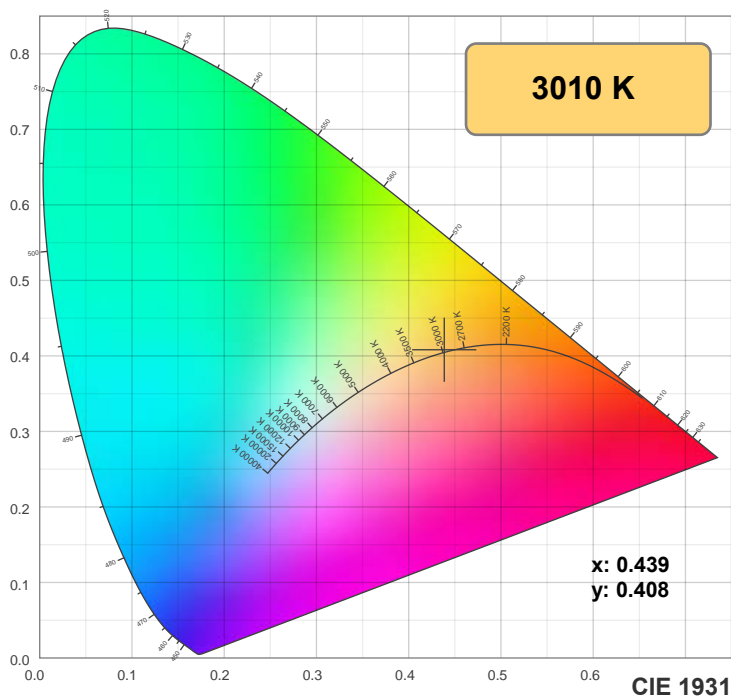
CIE 1931  
x: 0.439  
y: 0.408

Spectra

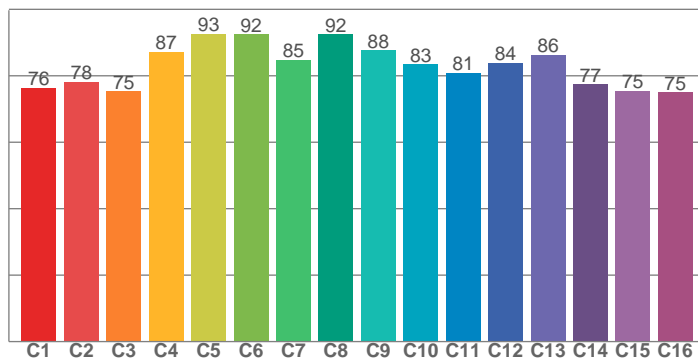


Power

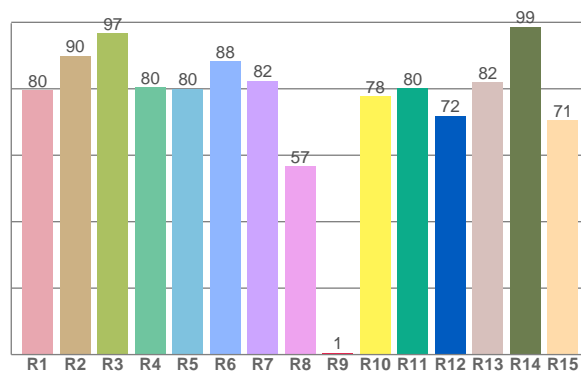




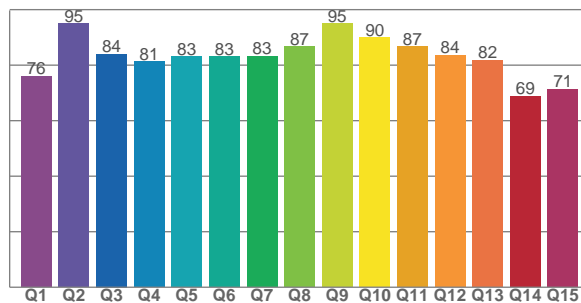
**TM30: 83.1**



**CRI: 81.7 (R1-R8)**



**CQS: 81.7**



CRI R values, only R1-R8 are used to calculate final CRI value

R1	R2	R3	R4	R5	R6	R7	R8	R9	R10	R11	R12	R13	R14	R15
79.5	89.9	96.7	80.4	80.0	88.2	82.4	56.7	0.6	77.8	80.1	71.9	81.9	98.6	70.6

TM30 C values, 16 binned values out of total of 99 C values

C1	C2	C3	C4	C5	C6	C7	C8	C9	C10	C11	C12	C13	C14	C15	C16
76.4	78.2	75.2	87.2	92.6	92.4	84.8	92.4	87.6	83.4	80.8	84.0	86.4	77.4	75.4	75.0

CQS Q values

Q1	Q2	Q3	Q4	Q5	Q6	Q7	Q8	Q9	Q10	Q11	Q12	Q13	Q14	Q15
76.0	95.0	84.0	81.2	83.2	83.1	83.2	86.7	95.0	90.0	86.7	83.6	81.7	68.8	71.3

## Color parameters

Color temperature	Color rendering index	Red component	Color fidelity	Color gamut	Color quality scale	Color coordinate cie 1931	Color coordinate cie 1931	Color coordinate	Color coordinate	Color deviation from black body
CCT	CRI	CRI R9	TM30 Rf	TM30 Rg	CQS	x	y	u	v	Δuv
3010 K	81.7	0.6	83.1	95.5	81.7	0.439	0.408	0.250	0.349	0.0014

## TM30 Details

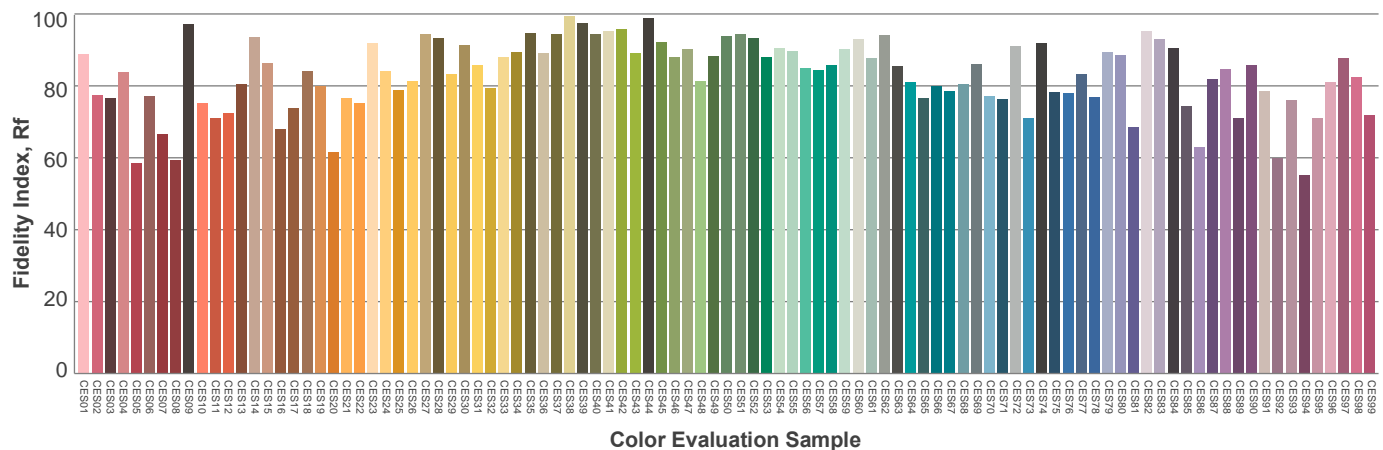
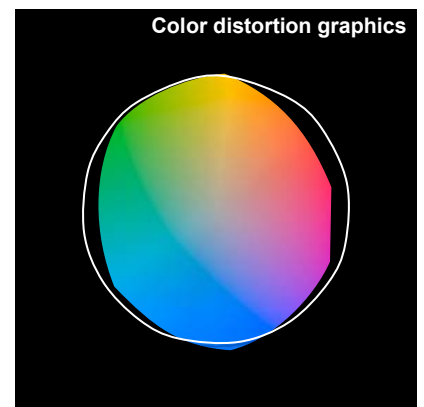
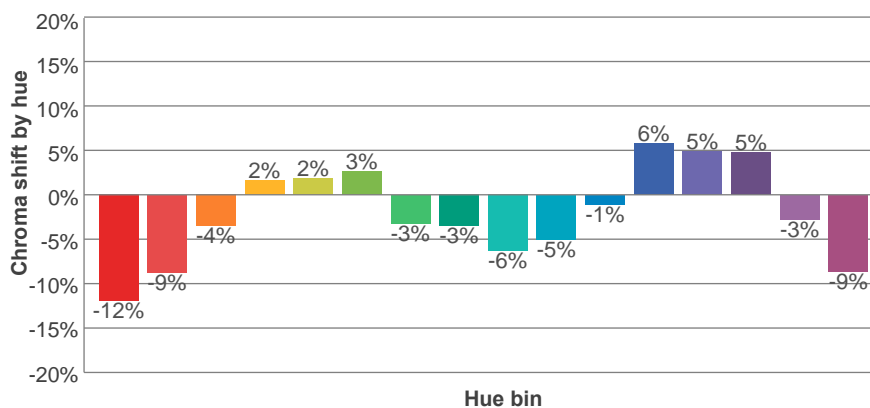
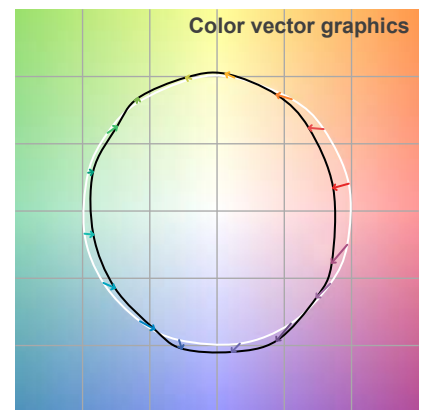
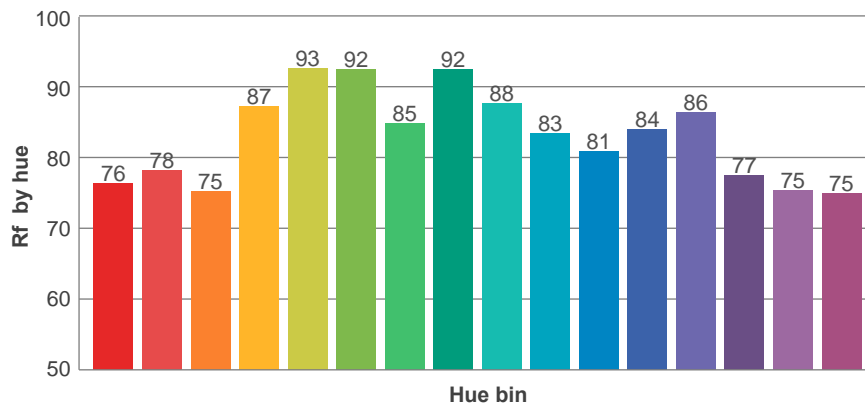
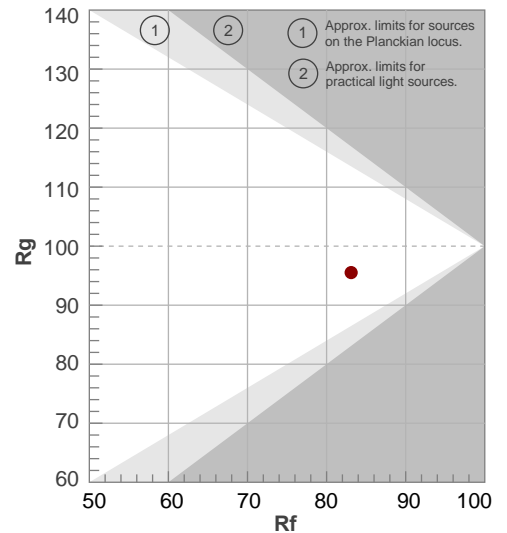
**Rf 83.1**

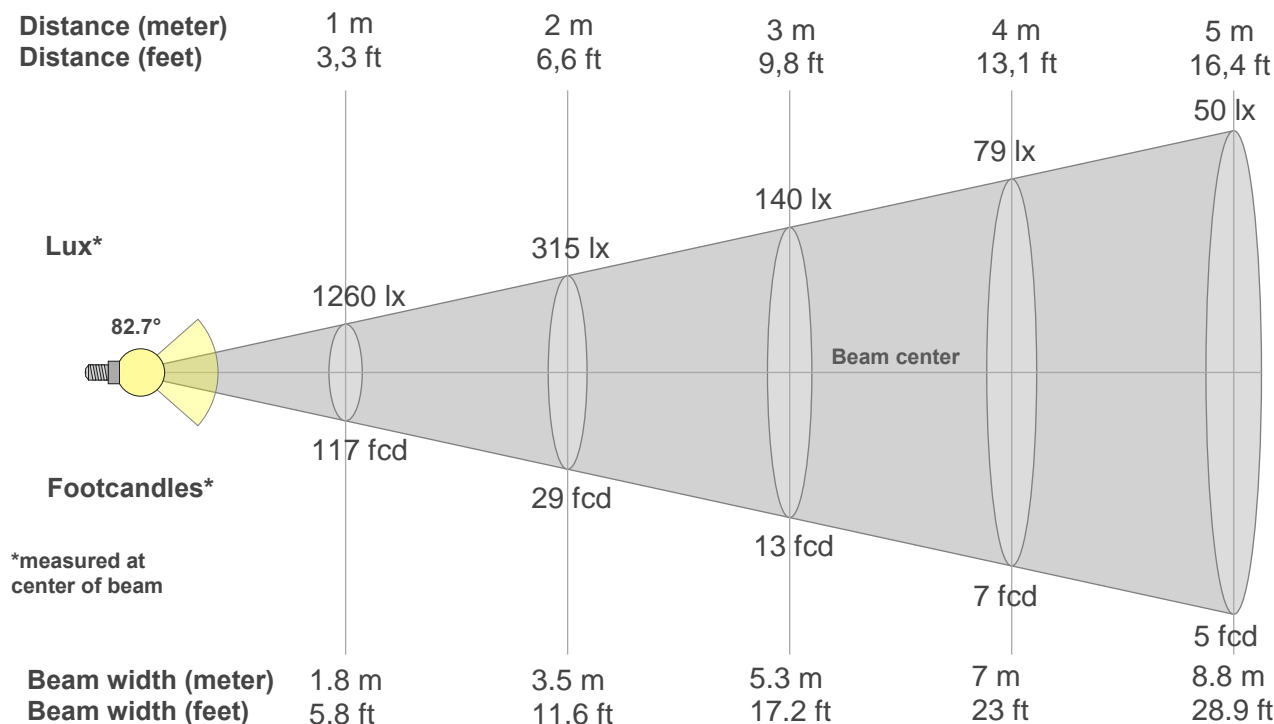
Fidelity index Rf

**Rg 95.5**

Gamut index Rg

Hue Bin	R <sub>f</sub>	Graphic shifts (%)	
		Chroma	Hue
1	76	-12%	-1%
2	78	-9%	7%
3	75	-4%	11%
4	87	2%	7%
5	93	2%	4%
6	92	3%	-3%
7	85	-3%	-8%
8	92	-3%	-1%
9	88	-6%	2%
10	83	-5%	8%
11	81	-1%	12%
12	84	6%	3%
13	86	5%	-7%
14	77	5%	-16%
15	75	-3%	-14%
16	75	-9%	-15%





### Beam intensities from 1-20m

1m	2m	3m	4m	5m	6m	7m	8m	9m	10m	11m	12m	13m	14m	15m	16m	17m	18m	19m	20m
3.3ft	6.6ft	9.8ft	13.1ft	16.4ft	19.7ft	23ft	26.2ft	29.5ft	32.8ft	36.1ft	39.4ft	42.7ft	45.9ft	49.2ft	52.5ft	55.8ft	59.1ft	62.3ft	65.6ft
1260lx	315lx	140lx	79lx	50lx	35lx	26lx	20lx	16lx	13lx	10lx	9lx	7lx	6lx	6lx	5lx	4lx	4lx	3lx	3lx
117fcd	29.3fcd	13fcd	7.3fcd	4.7fcd	3.3fcd	2.4fcd	1.8fcd	1.4fcd	1.2fcd	1fcd	0.8fcd	0.7fcd	0.6fcd	0.5fcd	0.5fcd	0.4fcd	0.4fcd	0.3fcd	0.3fcd

### Intensities in 0° c-plane

0°	5°	10°	15°	20°	25°	30°	35°	40°	45°	50°	55°	60°	65°	70°	75°	80°	85°	90°	95°
1260	1244	1227	1208	1185	1155	1113	1054	973	856	710	547	374	211	127	91	54	23	6	0
100%	99%	97%	96%	94%	92%	88%	84%	77%	68%	56%	43%	30%	17%	10%	7%	4%	2%	1%	0%

### Intensities in 90° c-plane

0°	5°	10°	15°	20°	25°	30°	35°	40°	45°	50°	55°	60°	65°	70°	75°	80°	85°	90°	95°
1260	1129	997	874	767	683	606	534	476	410	334	252	187	146	114	79	42	19	5	0
100%	90%	79%	69%	61%	54%	48%	42%	38%	33%	26%	20%	15%	12%	9%	6%	3%	2%	0%	0%

### Intensities in 180° c-plane

0°	5°	10°	15°	20°	25°	30°	35°	40°	45°	50°	55°	60°	65°	70°	75°	80°	85°	90°	95°
1260	1275	1289	1298	1298	1283	1244	1176	1067	911	724	518	309	160	98	63	29	8	0	0
100%	101%	102%	103%	103%	102%	99%	93%	85%	72%	57%	41%	25%	13%	8%	5%	2%	1%	0%	0%

### Intensities in 270° c-plane

0°	5°	10°	15°	20°	25°	30°	35°	40°	45°	50°	55°	60°	65°	70°	75°	80°	85°	90°	95°
1260	1385	1496	1586	1643	1642	1579	1467	1301	1073	814	561	301	125	64	36	14	3	0	0
100%	110%	119%	126%	130%	130%	125%	116%	103%	85%	65%	45%	24%	10%	5%	3%	1%	0%	0%	0%

Beam angle 50%	Field angle 10%	Cutoff angle 2,5%	Intensity ratio in 120° cone	Intensity ratio in 90° cone
82.7°	133°	157.9°	89.9%	64.5%