

Light efficiency:

43 Lumen/Watt

Light quality:

CRI: 83.5

Color temperature:

2873 K

Output: 1543 lm

Peak: 4569 cd

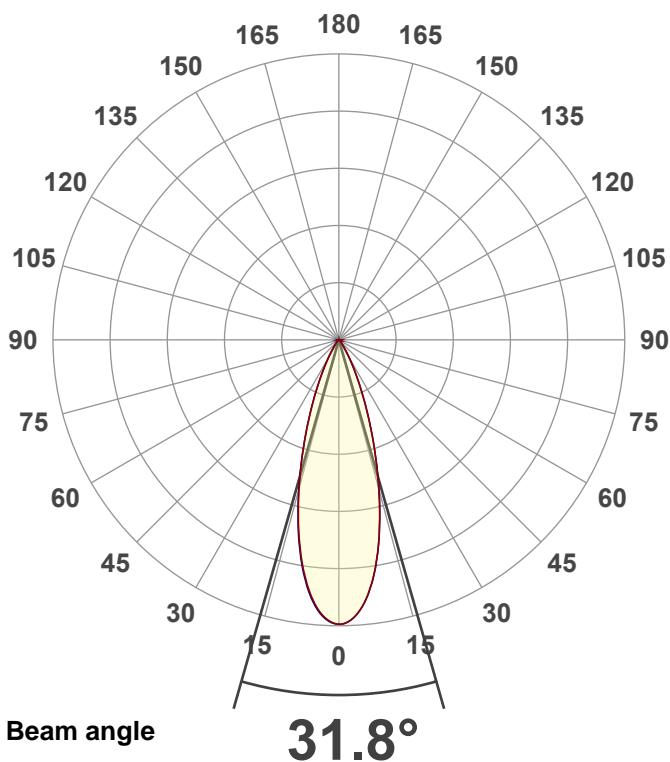
Power: 35.7 W

PF: 0.98



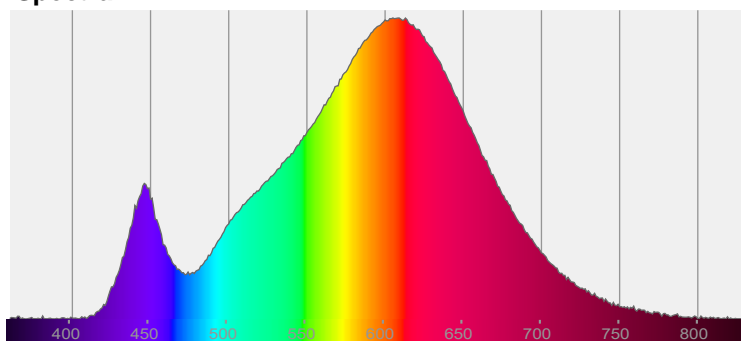
NU3-RA-XTM09-20LM-30K-83-35D-  
HETA-NL-WH-WH

Date and time:  
6/7/2022 10:38:06 AM

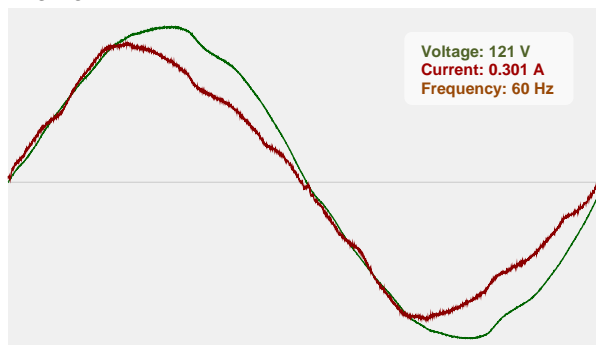


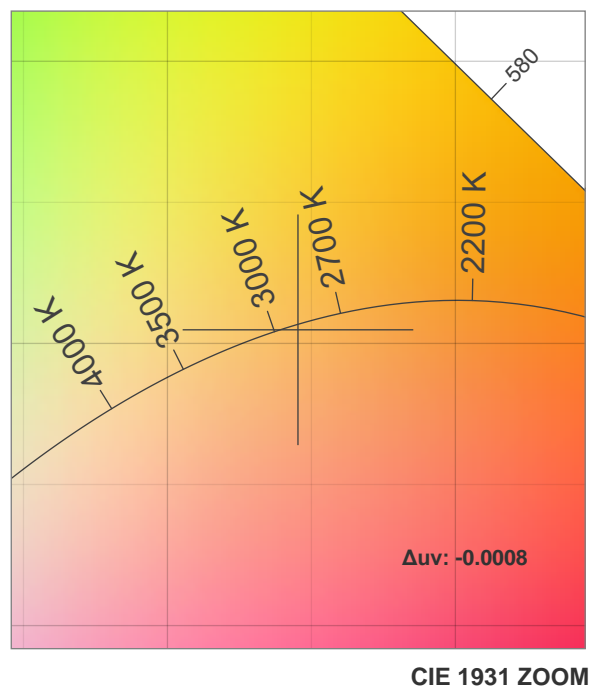
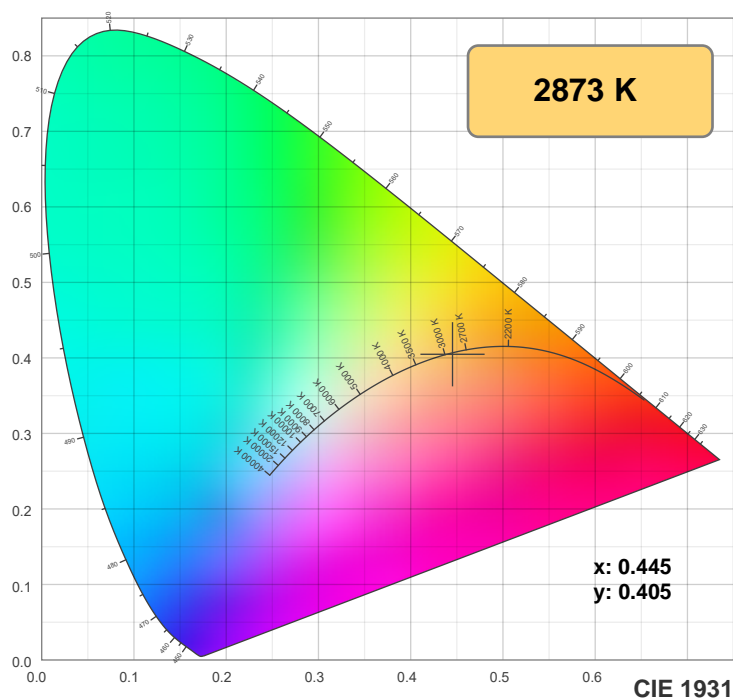
CIE 1931  
x: 0.445  
y: 0.405

Spectra

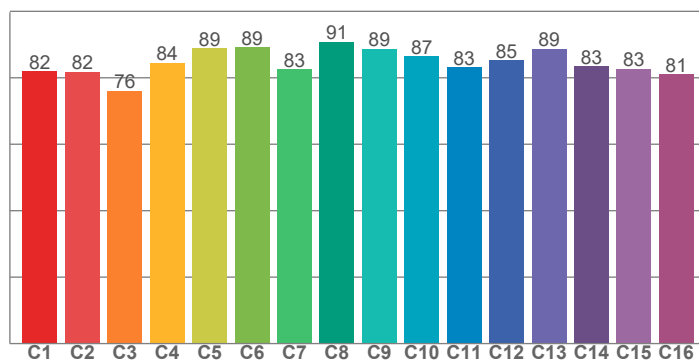


Power

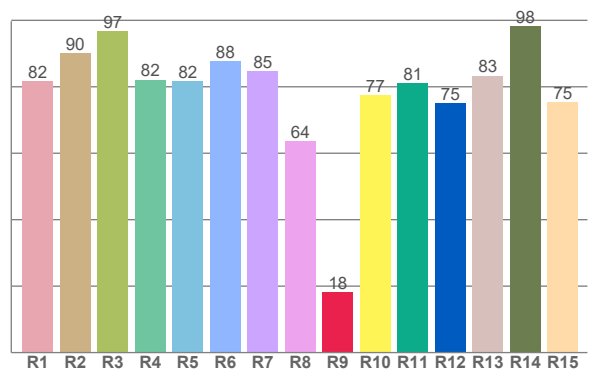




TM30: 84.6



CRI: 83.5 (R1-R8)



CRI R values, only R1-R8 are used to calculate final CRI value

R1	R2	R3	R4	R5	R6	R7	R8	R9	R10	R11	R12	R13	R14	R15
81.7	90.1	96.8	82.1	81.6	87.6	84.7	63.7	18.1	77.4	81.1	75.0	83.3	98.2	75.4

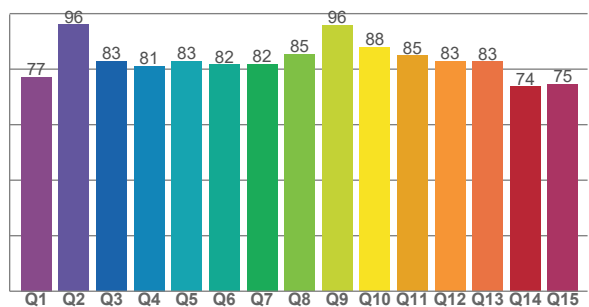
TM30 C values, 16 binned values out of total of 99 C values

C1	C2	C3	C4	C5	C6	C7	C8	C9	C10	C11	C12	C13	C14	C15	C16
82.0	81.7	76.0	84.4	88.8	89.1	82.5	90.7	88.7	86.5	83.2	85.2	88.8	83.4	82.6	81.0

CQS Q values

Q1	Q2	Q3	Q4	Q5	Q6	Q7	Q8	Q9	Q10	Q11	Q12	Q13	Q14	Q15
77.2	96.1	82.8	81.1	82.8	81.7	81.8	85.3	95.8	87.9	84.9	82.9	82.7	73.7	74.7

CQS: 82.2



## Color parameters

Color temperature	Color rendering index	Red component	Color fidelity	Color gamut	Color quality scale	Color coordinate cie 1931	Color coordinate cie 1931	Color coordinate	Color coordinate	Color deviation from black body
CCT	CRI	CRI R9	TM30 Rf	TM30 Rg	CQS	x	y	u	v	Δuv
2873 K	83.5	18.1	84.6	98.6	82.2	0.445	0.405	0.256	0.349	-0.0008

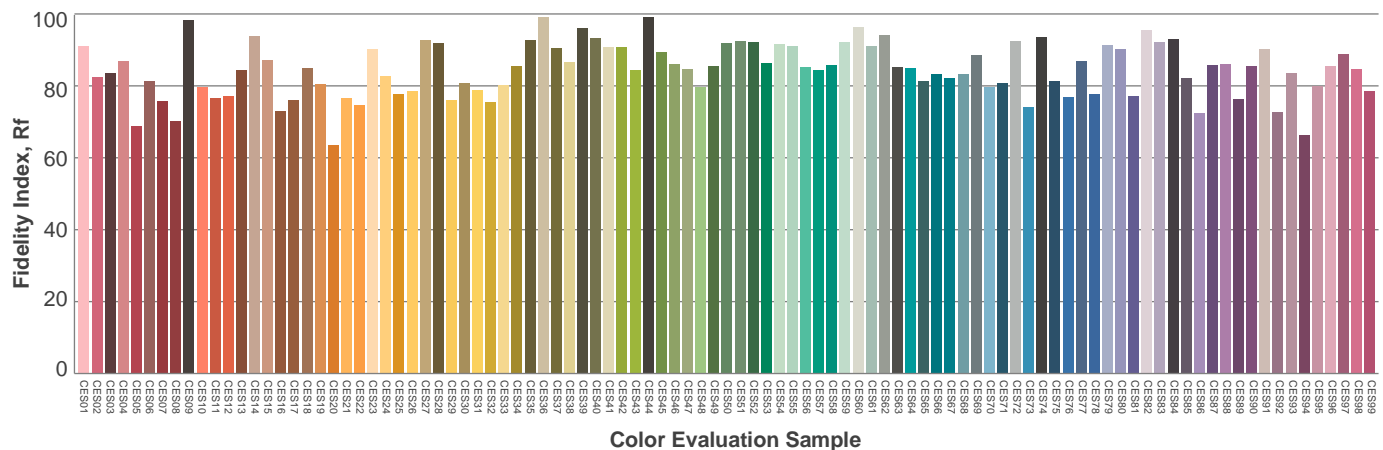
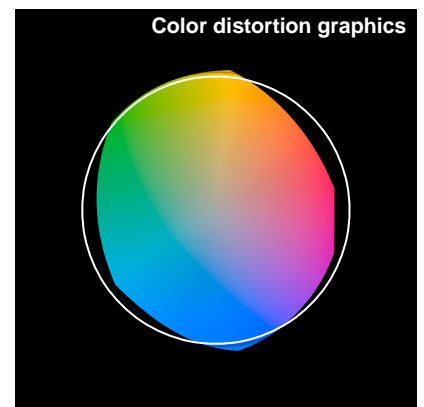
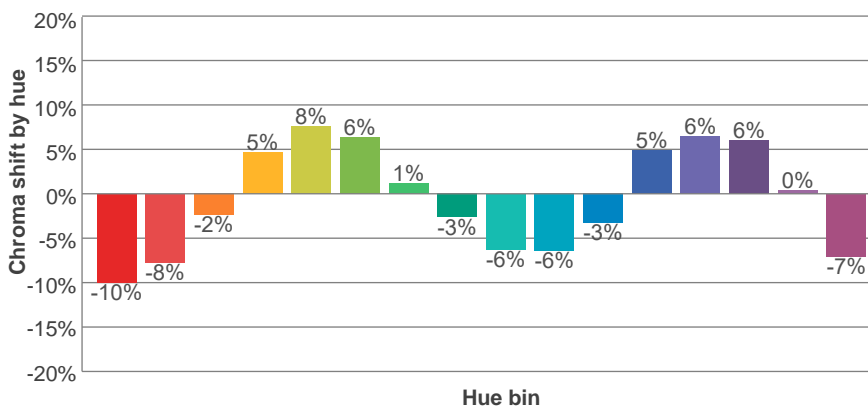
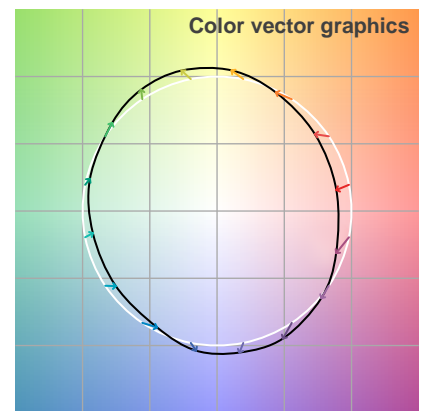
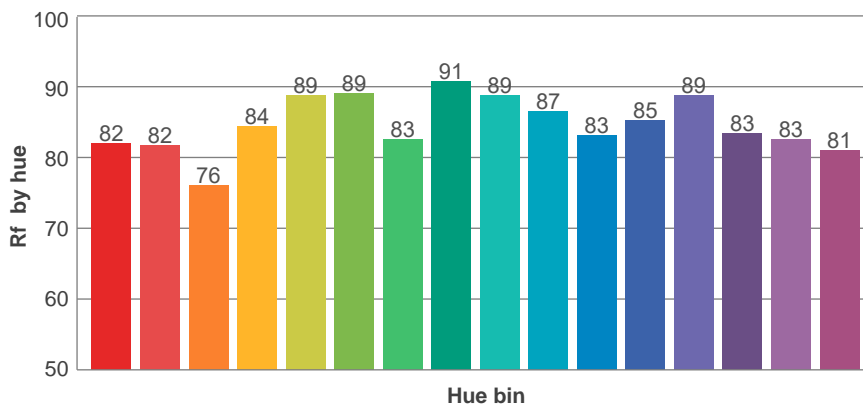
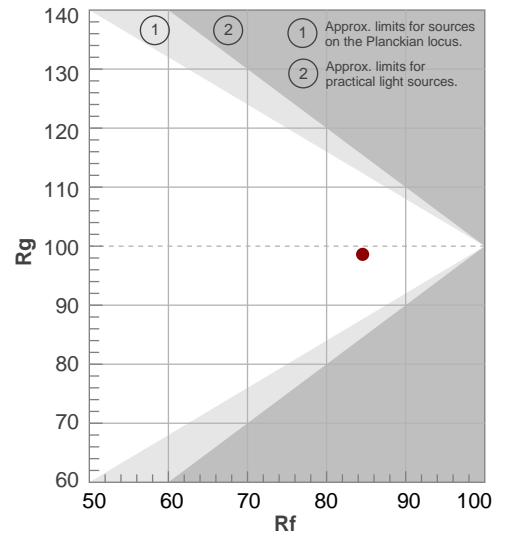
**Rf 84.6**

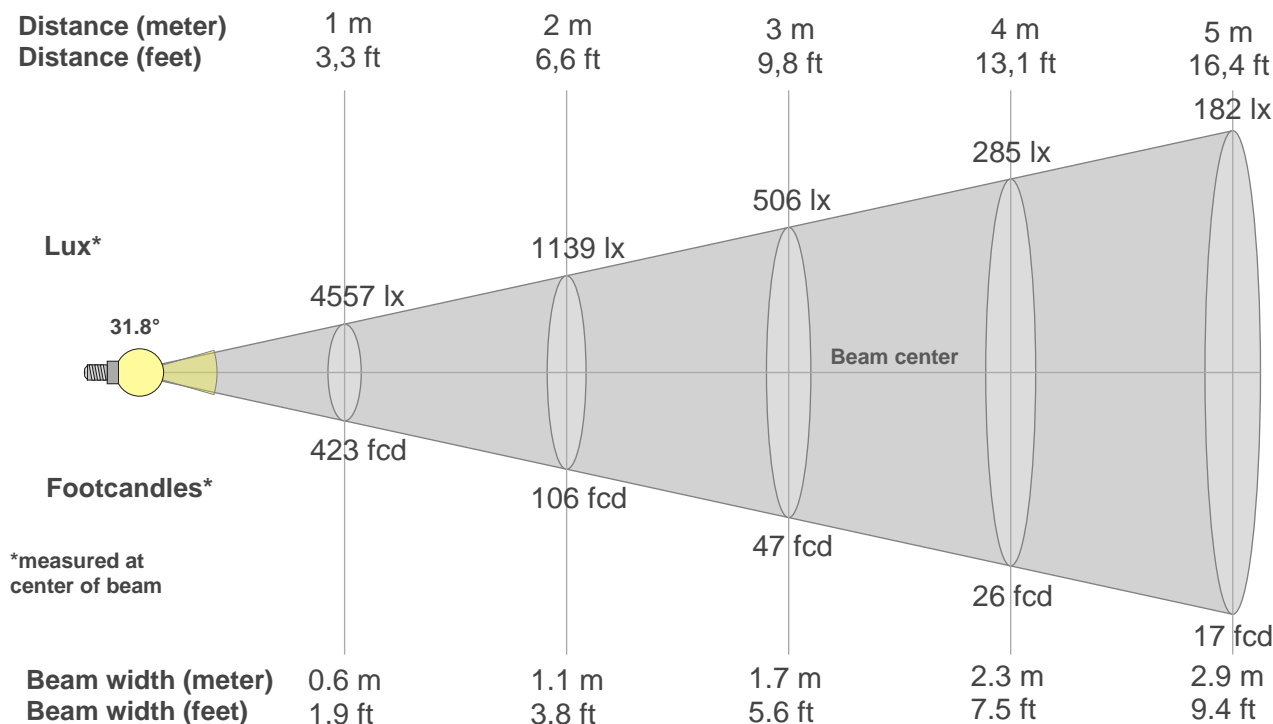
Fidelity index Rf

**Rg 98.6**

Gammut index Rg

Hue Bin	R <sub>f</sub>	Graphic shifts (%)	
		Chroma	Hue
1	82	-10%	-2%
2	82	-8%	7%
3	76	-2%	13%
4	84	5%	10%
5	89	8%	5%
6	89	6%	-3%
7	83	1%	-11%
8	91	-3%	-5%
9	89	-6%	-2%
10	87	-6%	5%
11	83	-3%	11%
12	85	5%	5%
13	89	6%	-4%
14	83	6%	-12%
15	83	0%	-11%
16	81	-7%	-13%





#### Beam intensities from 1-20m

1m	2m	3m	4m	5m	6m	7m	8m	9m	10m	11m	12m	13m	14m	15m	16m	17m	18m	19m	20m
3.3ft	6.6ft	9.8ft	13.1ft	16.4ft	19.7ft	23ft	26.2ft	29.5ft	32.8ft	36.1ft	39.4ft	42.7ft	45.9ft	49.2ft	52.5ft	55.8ft	59.1ft	62.3ft	65.6ft
4557lx	1139lx	506lx	285lx	182lx	127lx	93lx	71lx	56lx	46lx	38lx	32lx	27lx	23lx	20lx	18lx	16lx	14lx	13lx	11lx
423.3fcd	105.8fcd	47fcd	26.5fcd	16.9fcd	11.8fcd	8.6fcd	6.6fcd	5.2fcd	4.2fcd	3.5fcd	2.9fcd	2.5fcd	2.2fcd	1.9fcd	1.7fcd	1.5fcd	1.3fcd	1.2fcd	1.1fcd

#### Intensities in 0° c-plane

0°	2°	4°	6°	8°	10°	12°	14°	16°	18°	20°	22°	24°	26°	28°	30°	32°	34°	36°	38°
4557	4515	4390	4186	3889	3530	3128	2700	2267	1866	1499	1173	893	666	491	353	247	169	115	81
100%	99%	96%	92%	85%	77%	69%	59%	50%	41%	33%	26%	20%	15%	11%	8%	5%	4%	3%	2%

#### Intensities in 90° c-plane

0°	2°	4°	6°	8°	10°	12°	14°	16°	18°	20°	22°	24°	26°	28°	30°	32°	34°	36°	38°
4557	4512	4389	4191	3895	3537	3135	2708	2276	1864	1491	1159	872	644	469	331	227	151	104	70
100%	99%	96%	92%	85%	78%	69%	59%	50%	41%	33%	25%	19%	14%	10%	7%	5%	3%	2%	2%

#### Intensities in 180° c-plane

0°	2°	4°	6°	8°	10°	12°	14°	16°	18°	20°	22°	24°	26°	28°	30°	32°	34°	36°	38°
4557	4512	4378	4149	3854	3504	3108	2684	2267	1869	1501	1172	902	680	498	354	250	178	125	87
100%	99%	96%	91%	85%	77%	68%	59%	50%	41%	33%	26%	20%	15%	11%	8%	5%	4%	3%	2%

#### Intensities in 270° c-plane

0°	2°	4°	6°	8°	10°	12°	14°	16°	18°	20°	22°	24°	26°	28°	30°	32°	34°	36°	38°
4557	4521	4397	4175	3882	3531	3134	2705	2276	1869	1496	1165	894	673	494	355	249	178	126	89
100%	99%	97%	92%	85%	77%	69%	59%	50%	41%	33%	26%	20%	15%	11%	8%	5%	4%	3%	2%

Beam angle 50%	Field angle 10%	Cutoff angle 2,5%	Intensity ratio in 120° cone	Intensity ratio in 90° cone
31.8°	56.8°	72.3°	99.8%	99.1%