

Light efficiency:

69 Lumen/Watt

Light quality:

CRI: 82.1

Color temperature:

2918 K

Output: 1334 lm

Peak: 1051 cd

Power: 19.3 W

PF: 0.99



Beam angle

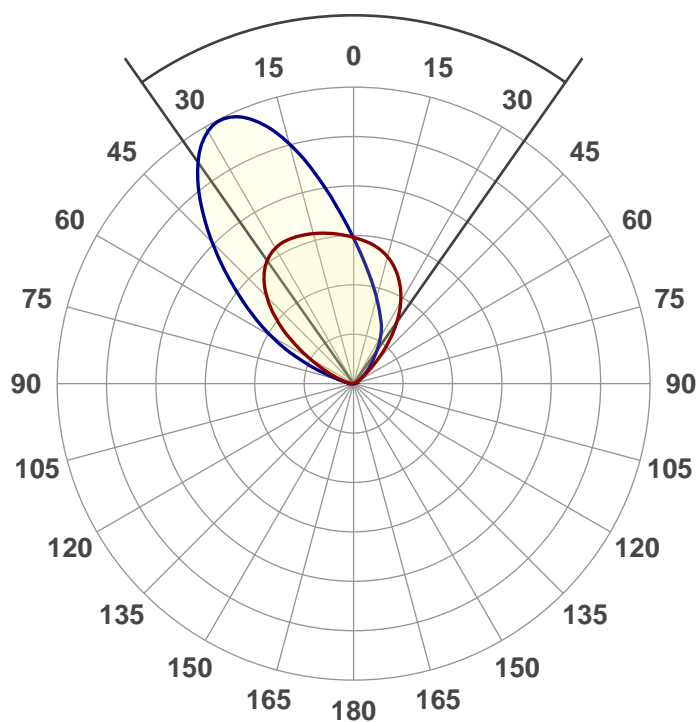
70.2°

Product name:

NU3-RW-XTM19-20LM-30K-83-WW-120-Dim10-NC-WH-WH

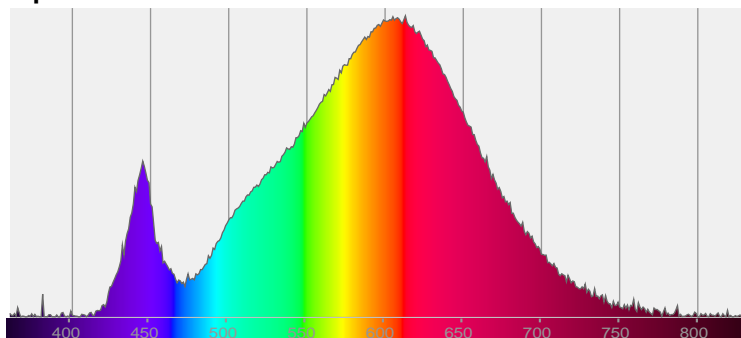
Date and time:

12/11/2017 7:47:00 AM

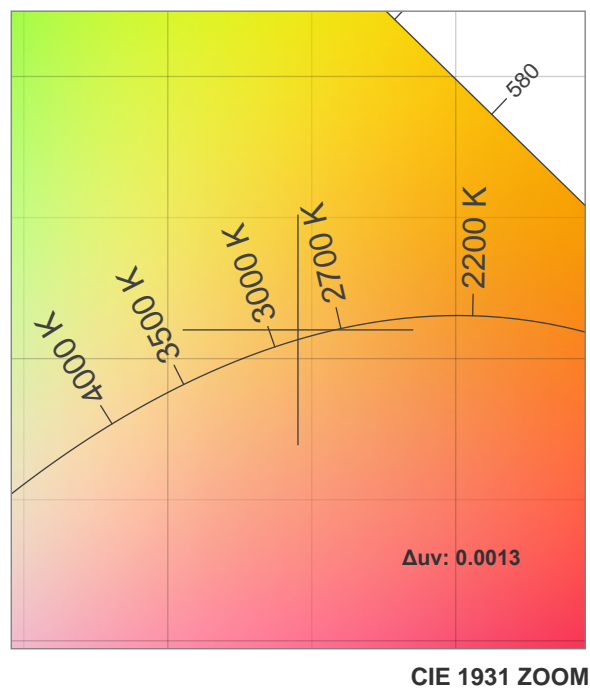
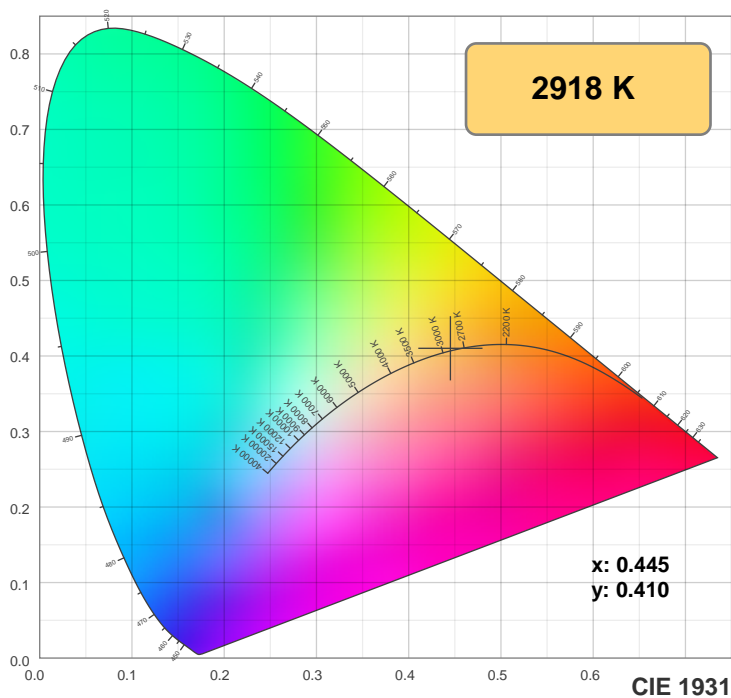


CIE 1931
x: 0.445
y: 0.410

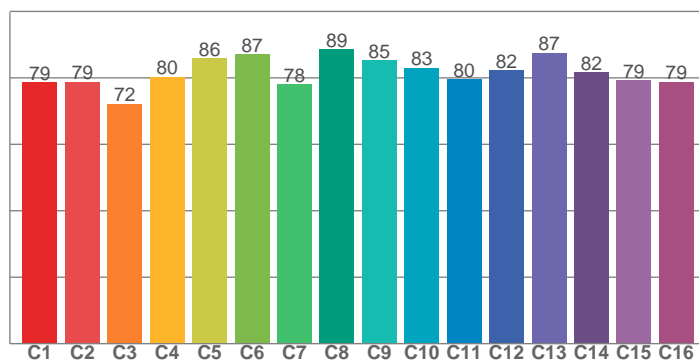
Spectra



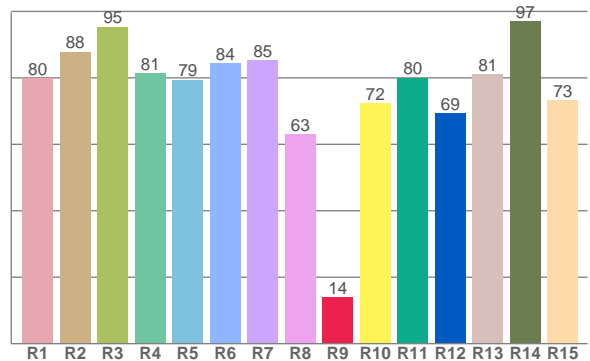
Color details



TM30: 81.5



CRI: 82.1 (R1-R8)



CRI R values, only R1-R8 are used to calculate final CRI value

R1	R2	R3	R4	R5	R6	R7	R8	R9	R10	R11	R12	R13	R14	R15
79.9	87.9	95.3	81.4	79.5	84.3	85.3	63.0	14.1	72.4	80.0	69.3	81.2	97.1	73.3

TM30 C values, 16 binned values out of total of 99 C values

C1	C2	C3	C4	C5	C6	C7	C8	C9	C10	C11	C12	C13	C14	C15	C16
78.7	78.9	72.1	80.3	85.9	87.1	78.0	88.6	85.2	83.1	79.5	82.3	87.5	81.7	79.2	78.8

Color parameters

Color temperature	Color rendering index	Red component	Color fidelity	Color gamut	Color coordinate cie 1931	Color coordinate cie 1931	Color coordinate	Color coordinate	Color deviation from black body
CCT	CRI	CRI R9	TM30 Rf	TM30 Rg	x	y	u	v	Δuv
2918 K	82.1	14.1	81.5	98.3	0.445	0.410	0.253	0.350	0.0013

TM30 details

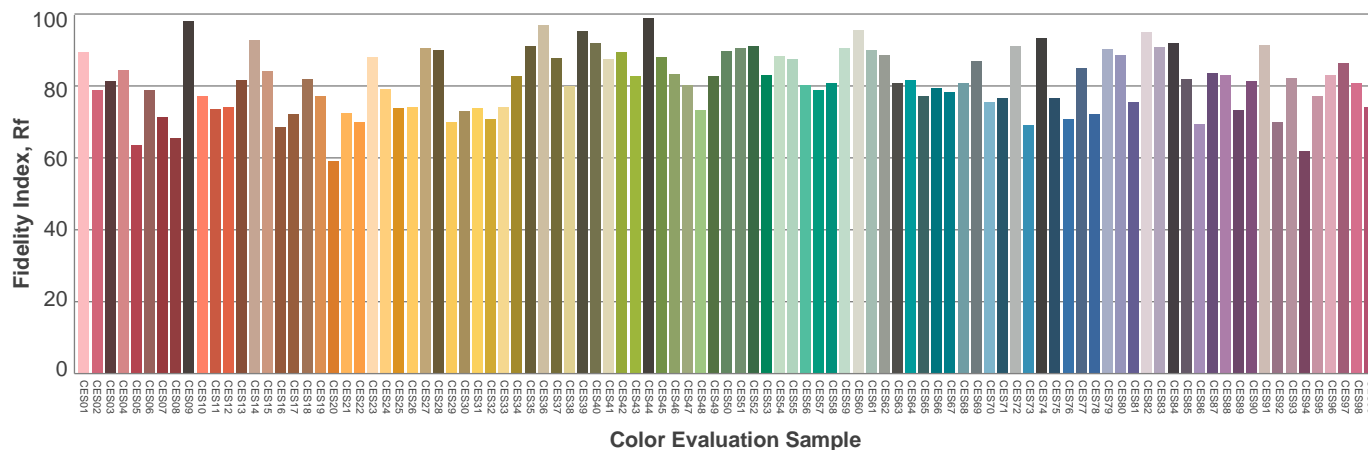
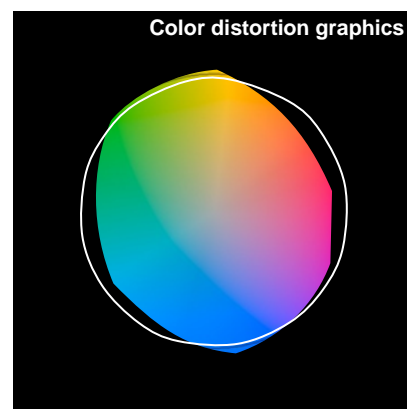
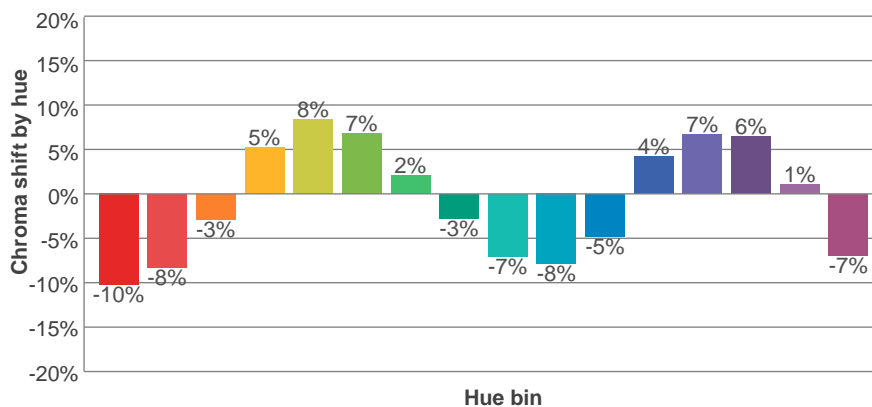
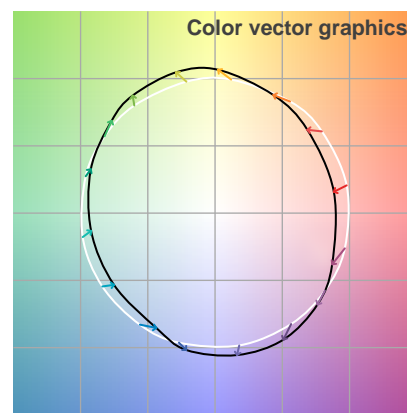
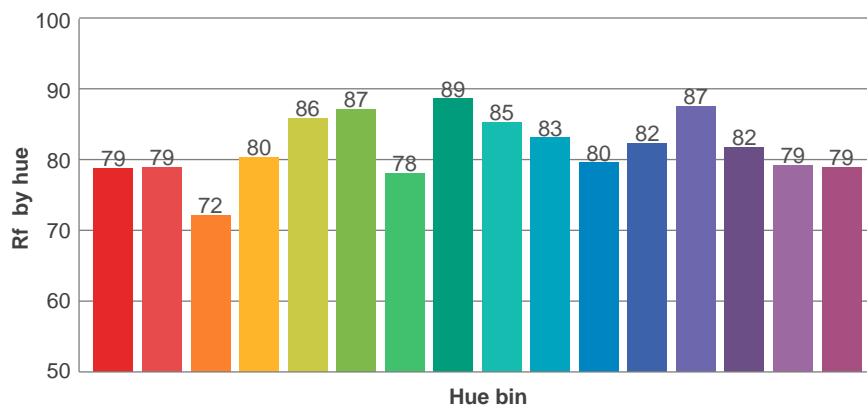
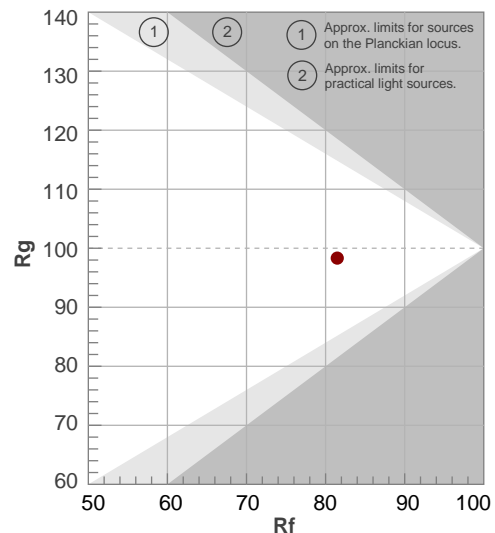
Rf 81.5

Fidelity index Rf

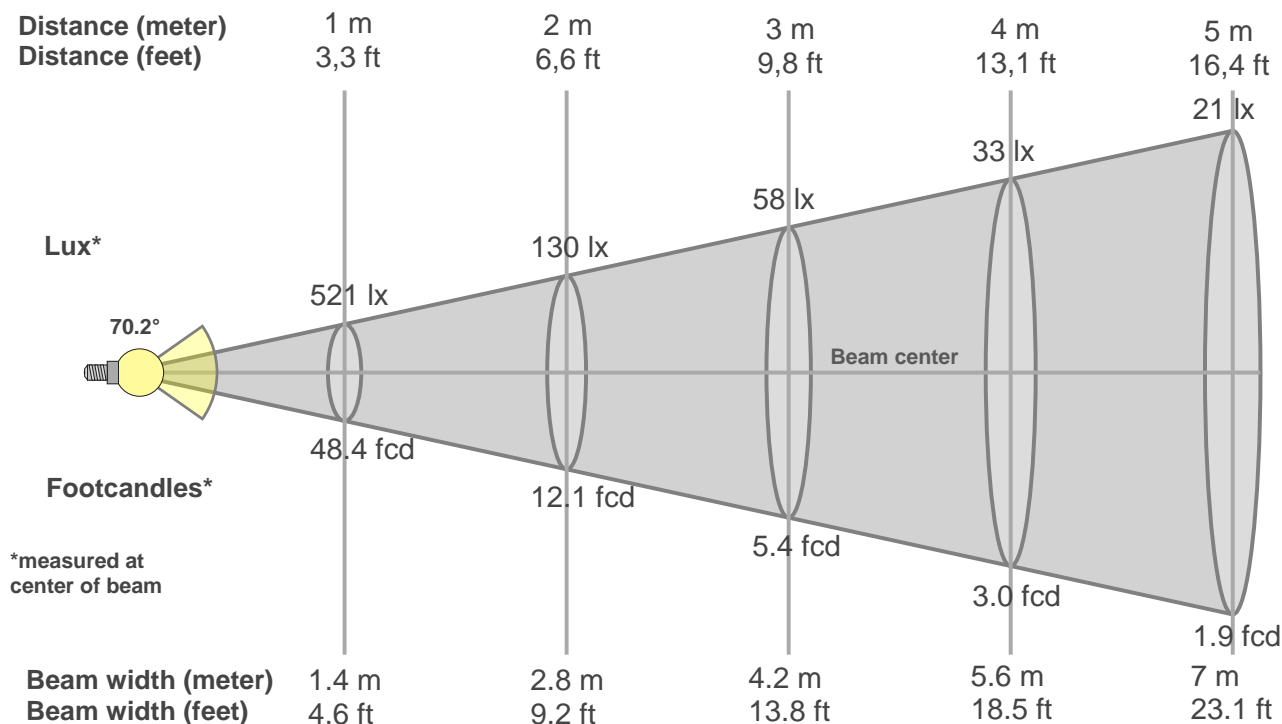
Rg 98.3

Gamut index Rg

Hue Bin	R _f	Graphic shifts (%)	
		Chroma	Hue
1	79	-10%	-3%
2	79	-8%	7%
3	72	-3%	13%
4	80	5%	11%
5	86	8%	6%
6	87	7%	-3%
7	78	2%	-12%
8	89	-3%	-6%
9	85	-7%	-3%
10	83	-8%	4%
11	80	-5%	11%
12	82	4%	6%
13	87	7%	-3%
14	82	6%	-11%
15	79	1%	-11%
16	79	-7%	-13%



Beam details



Beam intensities from 1-20m

1m	2m	3m	4m	5m	6m	7m	8m	9m	10m	11m	12m	13m	14m	15m	16m	17m	18m	19m	20m
3.3ft	6.6ft	9.8ft	13.1ft	16.4ft	19.7ft	23ft	26.2ft	29.5ft	32.8ft	36.1ft	39.4ft	42.7ft	45.9ft	49.2ft	52.5ft	55.8ft	59.1ft	62.3ft	65.6ft
521lx	130lx	58lx	33lx	21lx	14lx	11lx	8lx	6lx	5lx	4lx	4lx	3lx	3lx	2lx	2lx	2lx	2lx	1lx	1lx
48.4fcd	12.1fcd	5.4fcd	3fcd	1.9fcd	1.3fcd	1fcd	0.8fcd	0.6fcd	0.5fcd	0.4fcd	0.3fcd	0.3fcd	0.2fcd	0.2fcd	0.2fcd	0.2fcd	0.1fcd	0.1fcd	0.1fcd

Intensities in 0° c-plane

0°	5°	10°	15°	20°	25°	30°	35°	40°	45°	50°	55°	60°	65°	70°	75°	80°	85°	90°	95°
521	534	544	554	560	563	556	534	495	436	360	273	187	118	68	37	21	14	14	8
100%	102%	104%	106%	107%	108%	107%	102%	95%	84%	69%	52%	36%	23%	13%	7%	4%	3%	3%	2%

Intensities in 90° c-plane

0°	5°	10°	15°	20°	25°	30°	35°	40°	45°	50°	55°	60°	65°	70°	75°	80°	85°	90°	95°
521	627	753	882	986	1041	1032	962	849	714	579	454	340	229	126	60	32	19	8	3
100%	120%	144%	169%	189%	200%	198%	185%	163%	137%	111%	87%	65%	44%	24%	11%	6%	4%	2%	1%

Intensities in 180° c-plane

0°	5°	10°	15°	20°	25°	30°	35°	40°	45°	50°	55°	60°	65°	70°	75°	80°	85°	90°	95°
521	508	491	467	433	389	334	268	195	125	70	37	22	13	9	8	2	0	0	0
100%	97%	94%	90%	83%	75%	64%	51%	37%	24%	13%	7%	4%	2%	2%	2%	0%	0%	0%	0%

Intensities in 270° c-plane

0°	5°	10°	15°	20°	25°	30°	35°	40°	45°	50°	55°	60°	65°	70°	75°	80°	85°	90°	95°
521	438	372	318	272	233	192	147	106	75	51	34	21	11	6	2	1	0	0	0
100%	84%	71%	61%	52%	45%	37%	28%	20%	14%	10%	7%	4%	2%	1%	0%	0%	0%	0%	0%

Beam angle 50%	Field angle 10%	Cutoff angle 2,5%	Intensity ratio in 120° cone	Intensity ratio in 90° cone
70.2°	117.2°	146.8°	90.1%	67.6%